



DUFOUR 445 GRAND LARGE



DUFOUR 445 GRAND LARGE

BROKER'S COMMENTS

The success of the Dufour 445 Grand Large lies in her "nothing too radical" pedigree. The Dufour 445 Grand Large is a cruiser-racer with a rig, deck layout and sail plan that offers a combination of performance, comfort and ease of use. The result is a yacht that turns heads in the marina and can be used for a lot of different types of sailing.

Johan Schootstra

SPECIFICATIONS

| | | | |
|---------------------|-------------------------------|----------------|------------------------|
| Dimensions | 13.50 x 4.34 x 1.85 (m) | Builder | Dufour Yachts |
| Built | 2012 | Cabins | 3 |
| Material | GRP | Berths | 7 |
| Engine(s) | 1 x Volvo penta D2-75F diesel | Hp/Kw | 72.00 (hp), 52.92 (kw) |
| Asking price | sold (VAT) | Lying | contact Hindeloopen |

CONTACT

| | | | |
|---------------------|---|------------------|-----------------------|
| Sales office | De Valk Hindeloopen B.V. | Telephone | +31 514 52 40 00 |
| Address | Oosterstrand 1 8713 JS Hindeloopen NL | E-mail | hindeloopen@devalk.nl |

DISCLAIMER

These particulars are given in good faith as supplied but cannot be guaranteed.



DUFOUR 445 GRAND LARGE

GENERAL

| | |
|-----------------------------|------------------------|
| Model | DUFOUR 445 GRAND LARGE |
| Type | sailing yacht |
| LOA (m) | 13,50 |
| LWL (m) | 11,92 |
| Beam (m) | 4,34 |
| Draft (m) | 1,85 |
| Air draft (m) | 19,20 |
| Headroom (m) | 1,95 |
| Year built | 2012 |
| Builder | Dufour Yachts |
| Country | France |
| Designer | Umberto Felci |
| Displacement (t) | 13,5 |
| Ballast (tonnes) | cast iron 2,8 |
| CE norm | A |
| Hull material | GRP |
| Hull colour | white |
| Hull shape | round-bilged |
| Keel type | fin keel with bulb |
| Superstructure material | GRP |
| Deck material | GRP |
| Deck finish | anti-slip moulded in |
| Superstructure deck finish | anti-slip moulded in |
| Cockpit deck finish | teak |
| Window frame | aluminium |
| Window material | polycarbonate |
| Deckhatch | 9x |
| Portholes | 8x |
| Fuel tank (litre) | polyethylene 250 |
| Level indicator (fuel tank) | yes |



DUFOUR 445 GRAND LARGE

| | |
|------------------------------|---------------------------|
| Freshwater tank (litre) | polyethylene 2x total 530 |
| Level indicator (freshwater) | yes |
| Blackwater tank (litre) | 50 |
| Wheel steering | cable steering 2x |
| Emergency tiller | yes |

ACCOMMODATION

| | |
|-----------------------|-----------------------------------|
| Cabins | 3 |
| Berths | 7 |
| Interior | Moabi |
| Floor | Moabi |
| Open cockpit | yes |
| Saloon | yes |
| Headroom saloon (m) | 1,95 |
| Heating | diesel ducted hot air Eberspächer |
| Chart table | yes |
| Aft Cabin | 2x |
| Galley | yes |
| Countertop | corian |
| Sink | stainless steel 2x |
| Cooker | calor gas 3 burner - Techimpex |
| Oven | In cooker |
| Fridge | Big isotherm fridge |
| Hot water system | 220V + engine |
| Water pressure system | electrical |
| Owners cabin | French bed |
| Bed length (m) | 1,95 |
| Wardrobe | shelves and hanging |
| Toilet | separate |
| Toilet system | manual Jabsco |
| Wash basin | yes |



DUFOUR 445 GRAND LARGE

| | |
|----------------|---------------------|
| Shower | separate |
| Guest cabin 1 | double bed |
| Bed length (m) | 2,00 |
| Wardrobe | shelves and hanging |
| Guest cabin 2 | double bed |
| Bed length (m) | 2,00 |
| Wardrobe | shelves and hanging |
| Toilet | shared |
| Toilet system | manual |
| Wash basin | at the toilet |
| Shower | shared |

MACHINERY

| | |
|-----------------------|---------------------------|
| No of engines | 1 |
| Make | Volvo penta |
| Type | D2-75F |
| HP | 72 |
| kW | 52.92 |
| Fuel | diesel |
| Year installed | 2012 |
| Maximum speed (kn) | 8 |
| Cruising speed (kn) | 6 |
| Consumption (l/hr) | 3 |
| Engine hours | 115 |
| Engine cooling system | freshwater heat exchanger |
| Drive | sail-drive |
| Engine controls | bowden cable |
| Bowthruster | electric Retractable |
| Exhaust | watercooled |
| Propeller type | folding |
| Manual bilge pump | 38L @ 45 strokes/minute |



DUFOUR 445 GRAND LARGE

| | |
|--------------------------|------------------------|
| Electric bilge pump | 1,920 L/H |
| Electrical installation | 12 / 220 Volt |
| Start battery | 1x AGM |
| Service battery | 2x 200Ah |
| Bowthruster battery | 1x |
| Battery monitor | yes |
| Battery charger/inverter | Mass Combi 12/2000-100 |
| Shorepower | with cable |
| Insulation transformer | Mass GI 3.5 |

NAVIGATION

| | |
|------------------------|-------------------------|
| Compass | 2x Plastimo Olympic 135 |
| Depth sounder | Raymarine ST70 |
| Log | Raymarine ST70 |
| Windset | Raymarine ST70 |
| VHF | Raymarine Ray 55E |
| Autopilot | Raymarine ST70 |
| Rudder angle indicator | yes |
| Radar | Raymarine |
| Radar/GPS/plotter | 2x Raymarine C90 W |
| AIS receiver | yes |

EQUIPMENT

| | |
|------------------|------------------|
| Sprayhood | yes |
| Cockpit table | yes |
| Bathing platform | yes |
| Boarding ladder | stainless steel |
| Deck shower | Hot and cold |
| Anchor | CQR Plough 20kg |
| Anchor chain | yes |
| Windlass | electrical Quick |



DUFOUR 445 GRAND LARGE

| | |
|----------------------------|-----------------|
| Outboard support | yes |
| Sea railing | stainless steel |
| Grab rail (superstructure) | teak |
| Railing side opening gates | yes |
| Pushpit | yes |
| Pulpit | yes |
| Fenders | yes |
| Mooring lines | yes |
| TV | yes |
| Radio-cd player | Kenwood |
| DVD player | yes |
| Cockpit speakers | yes |
| Speakers in salon | yes |

RIGGING

| | |
|--------------------|---------------------------|
| Rigging | sloop |
| Standing rigging | wire |
| Brand mast | Z-Spar |
| Material mast | aluminium |
| Spreaders | 2x |
| Mainsail | 43 M² |
| Stoway mast | yes |
| Genoa | 55 M² |
| Genoa furler | Facnor LS 200 |
| Genoa cover | yes |
| Reefing System | main in-mast furling |
| Boomvang | gasspring |
| Genoa sheetwinches | electric 2x Lewmar 50 |
| Halyard winches | one electric 2x Lewmar 45 |



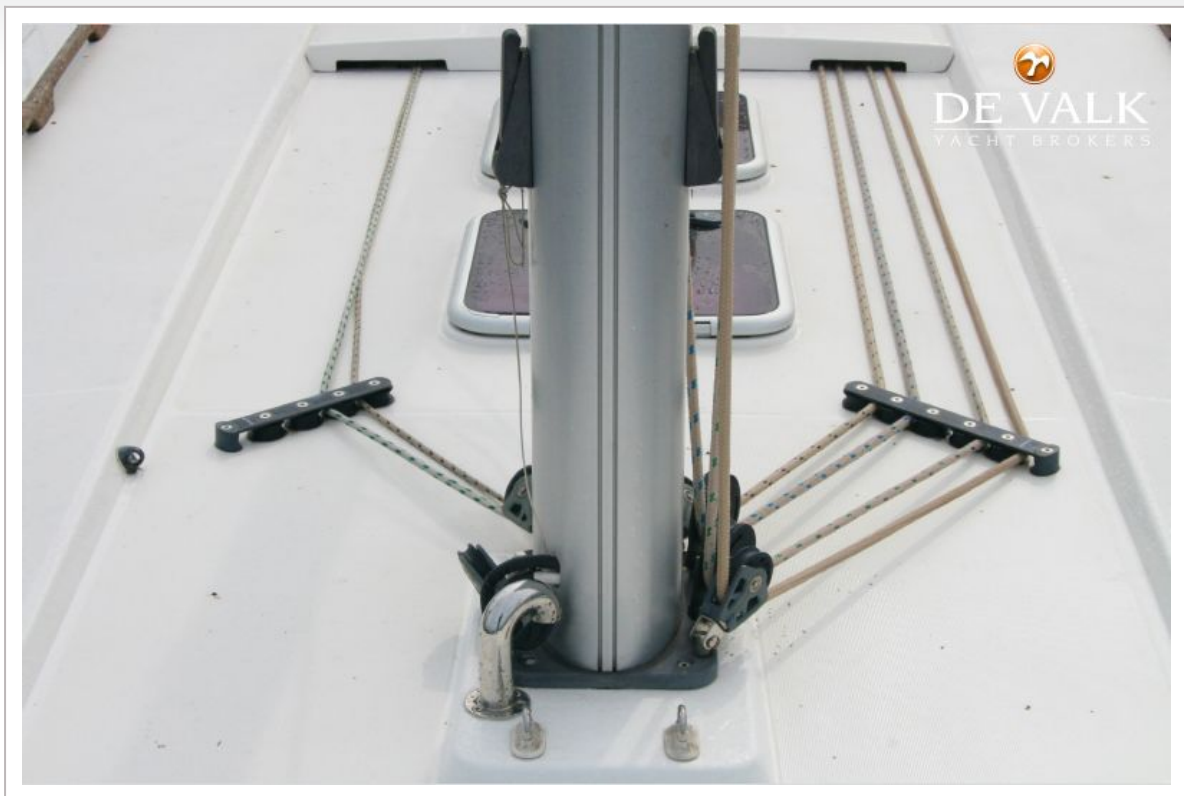
DUFOUR 445 GRAND LARGE



DUFOUR 445 GRAND LARGE



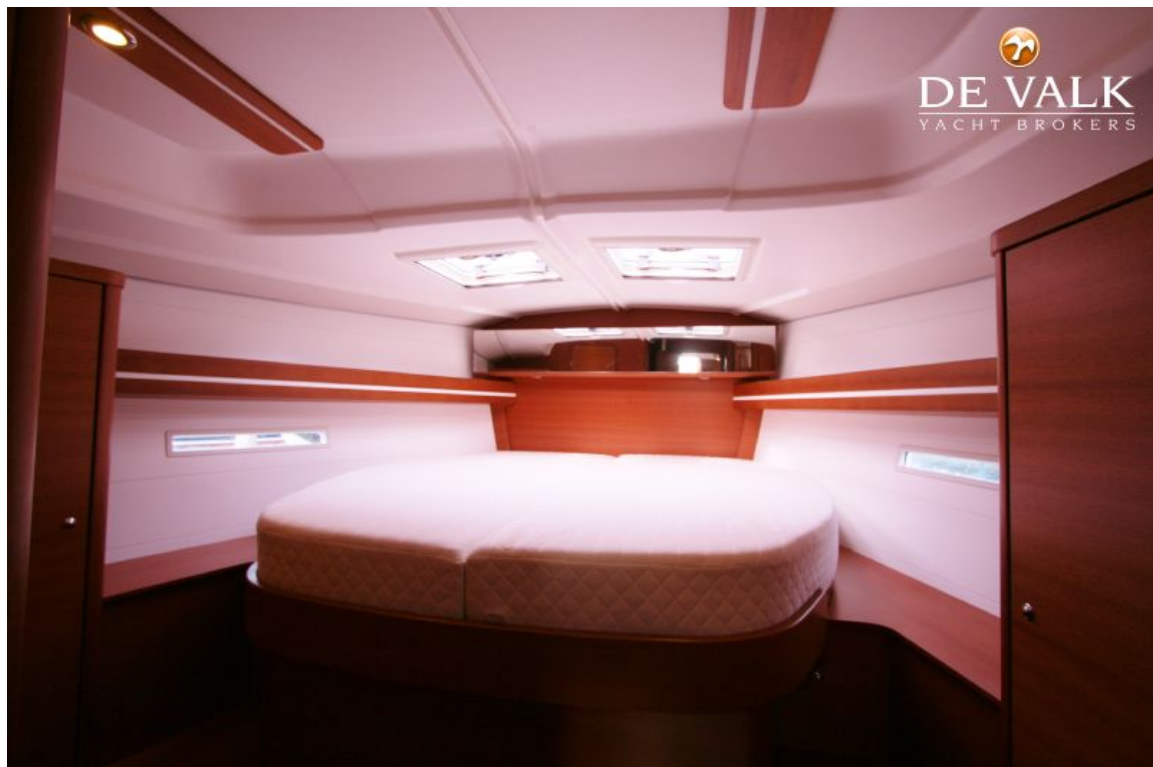
DUFOUR 445 GRAND LARGE



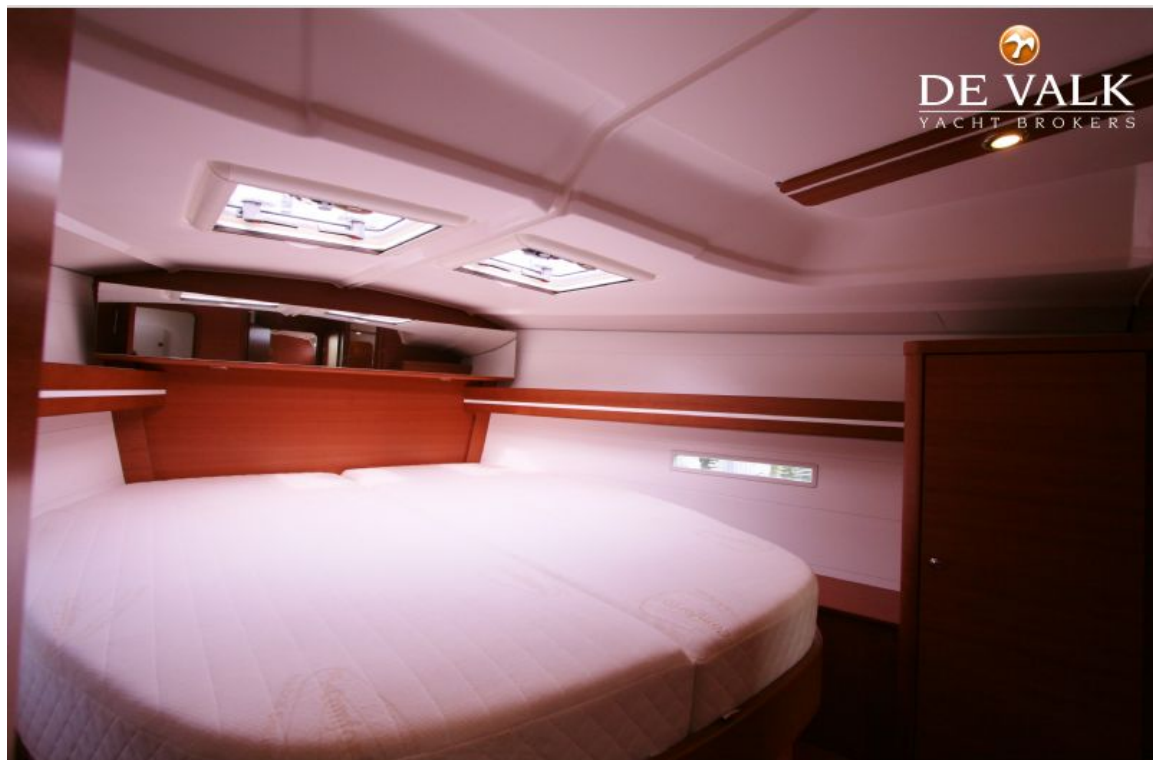
DUFOUR 445 GRAND LARGE



DUFOUR 445 GRAND LARGE



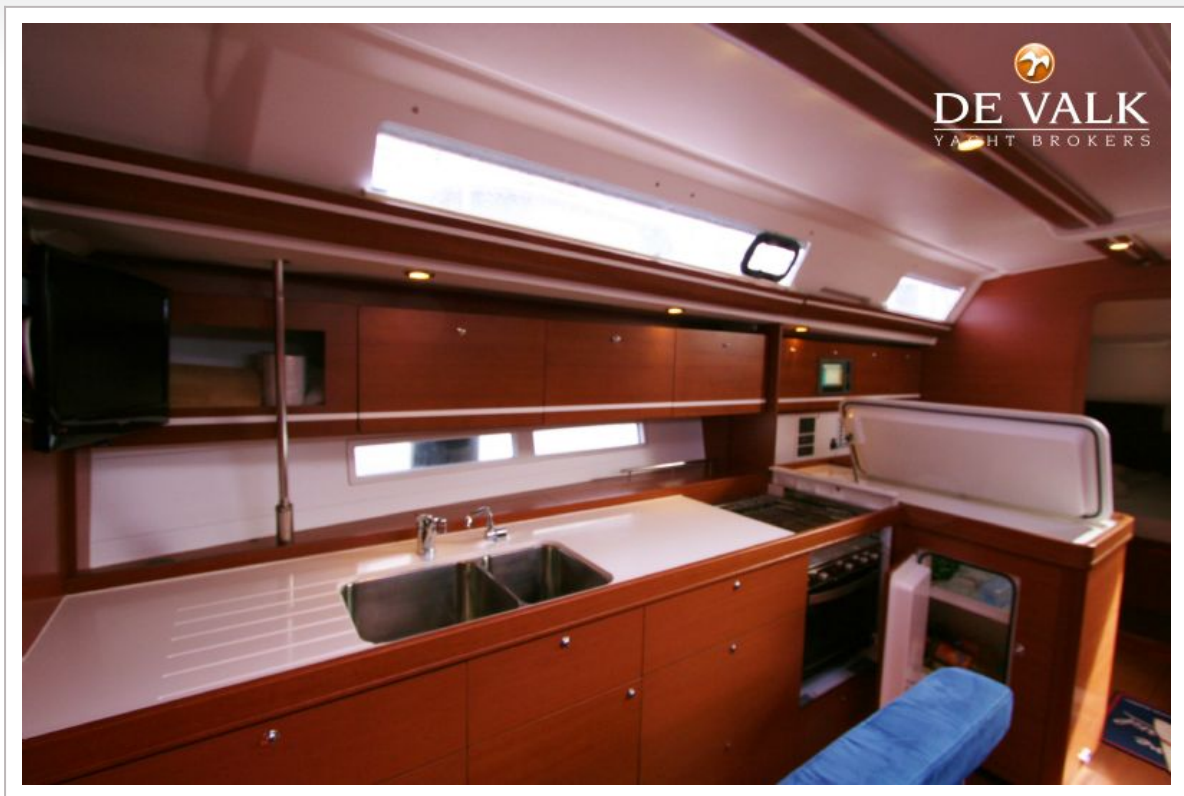
DUFOUR 445 GRAND LARGE



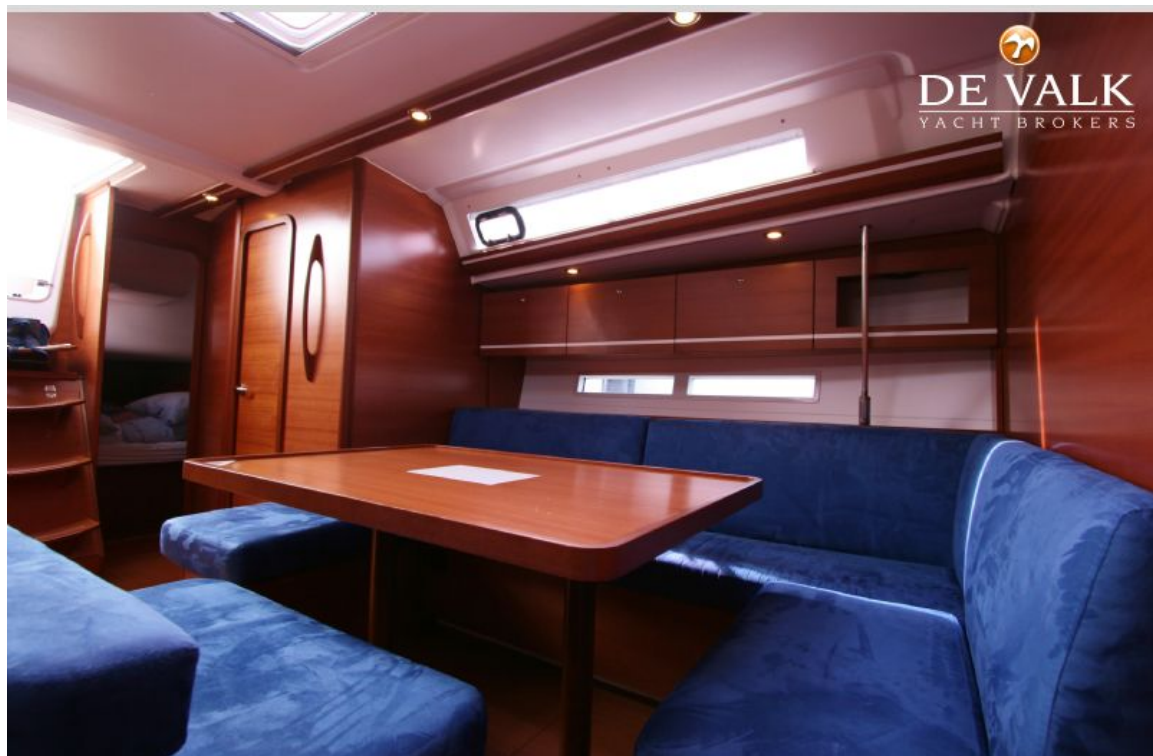
DUFOUR 445 GRAND LARGE



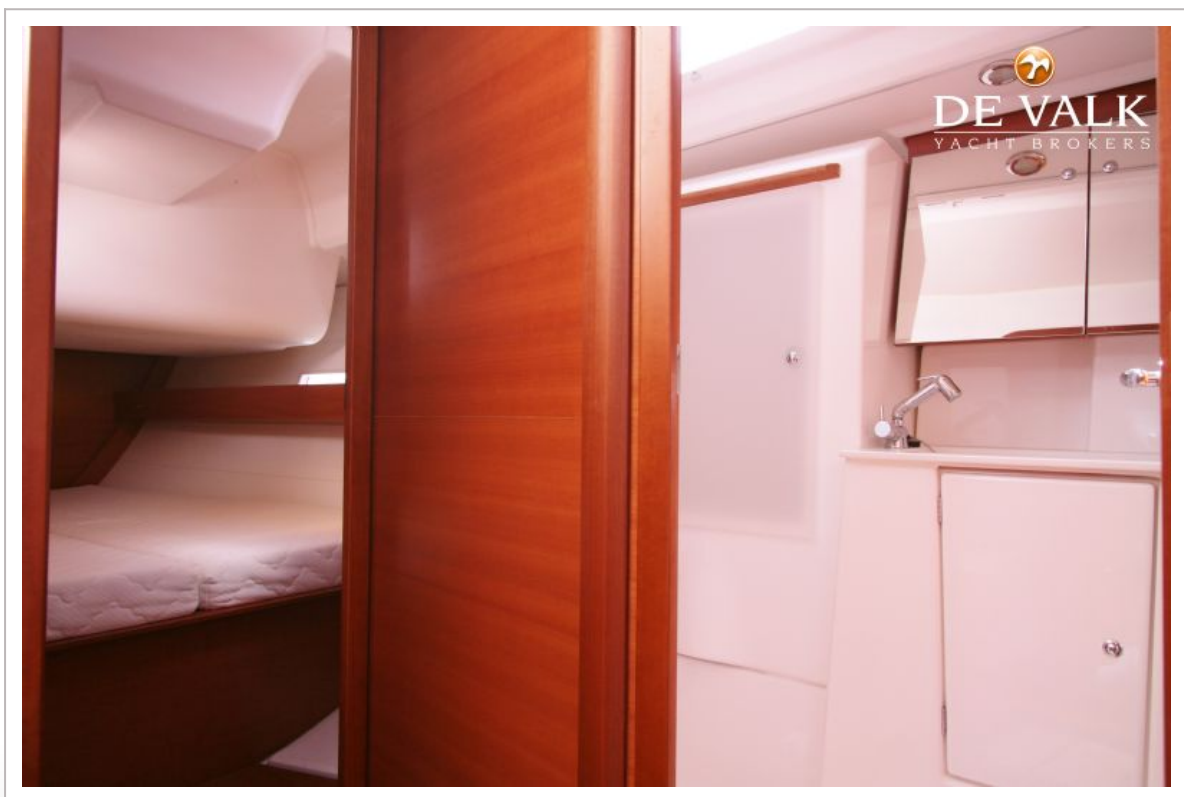
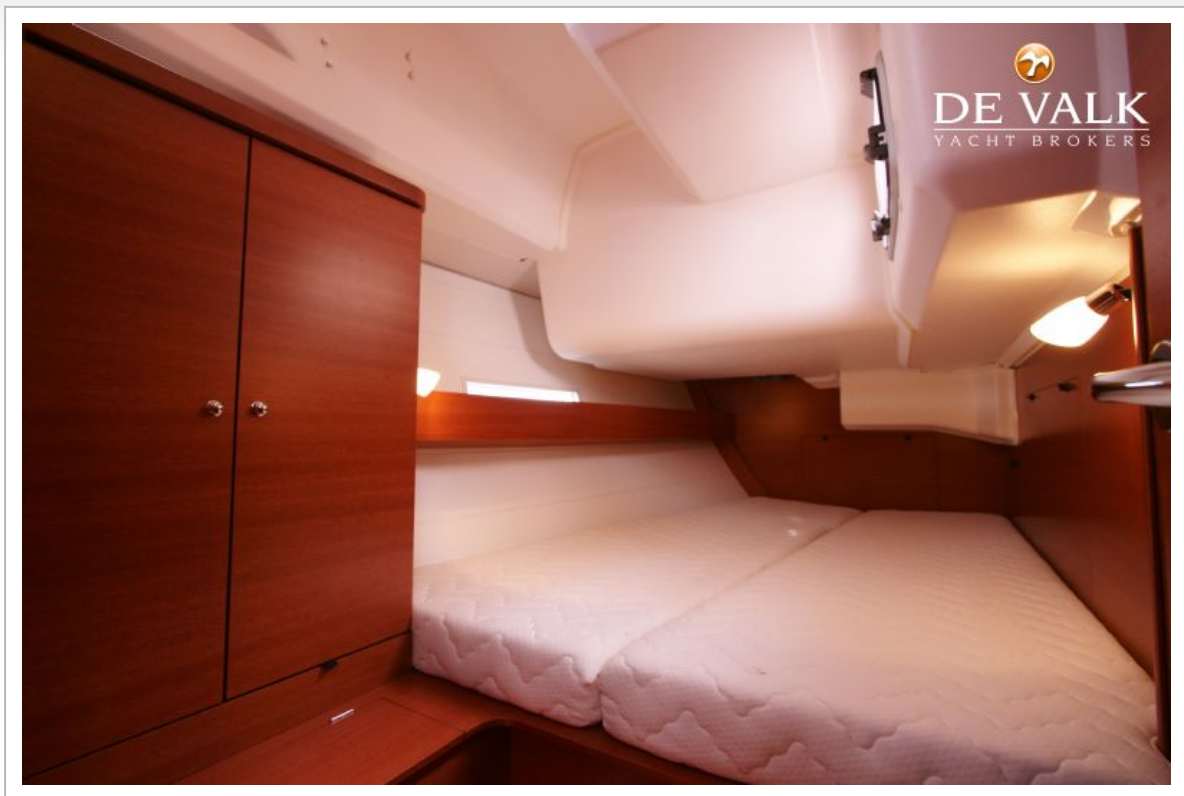
DUFOUR 445 GRAND LARGE



DUFOUR 445 GRAND LARGE



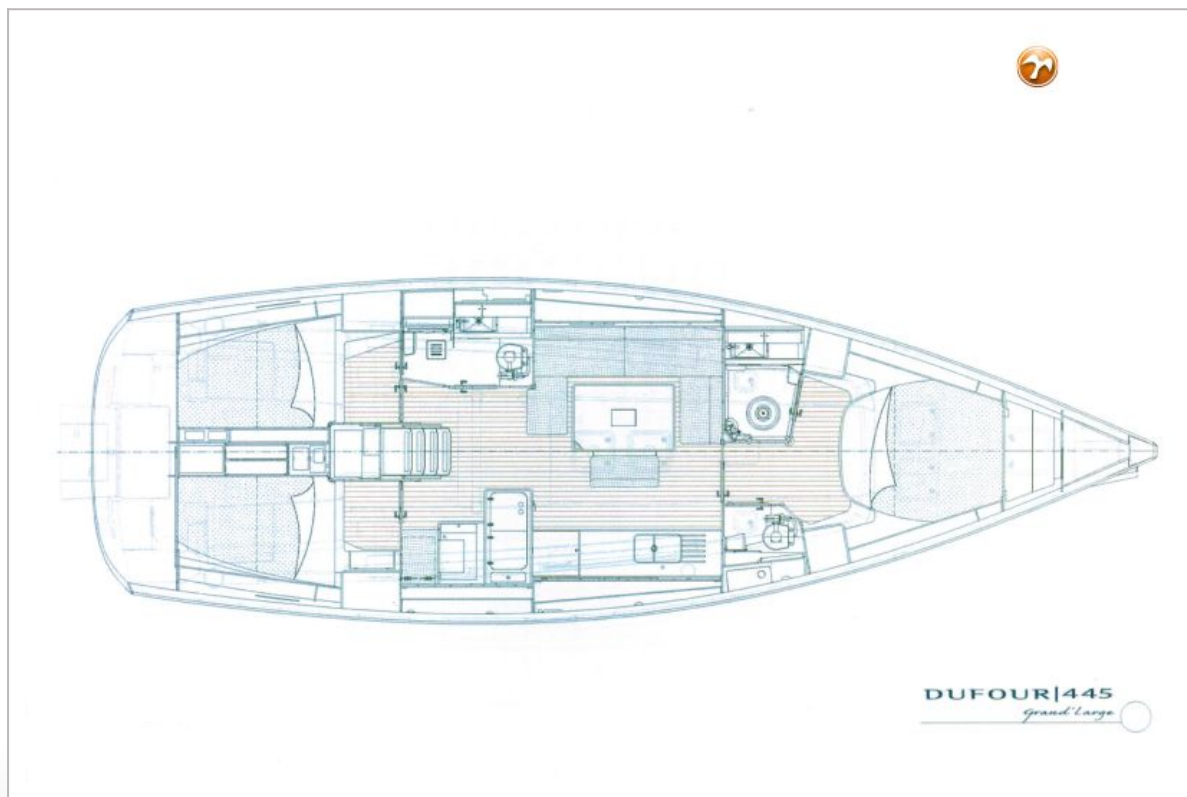
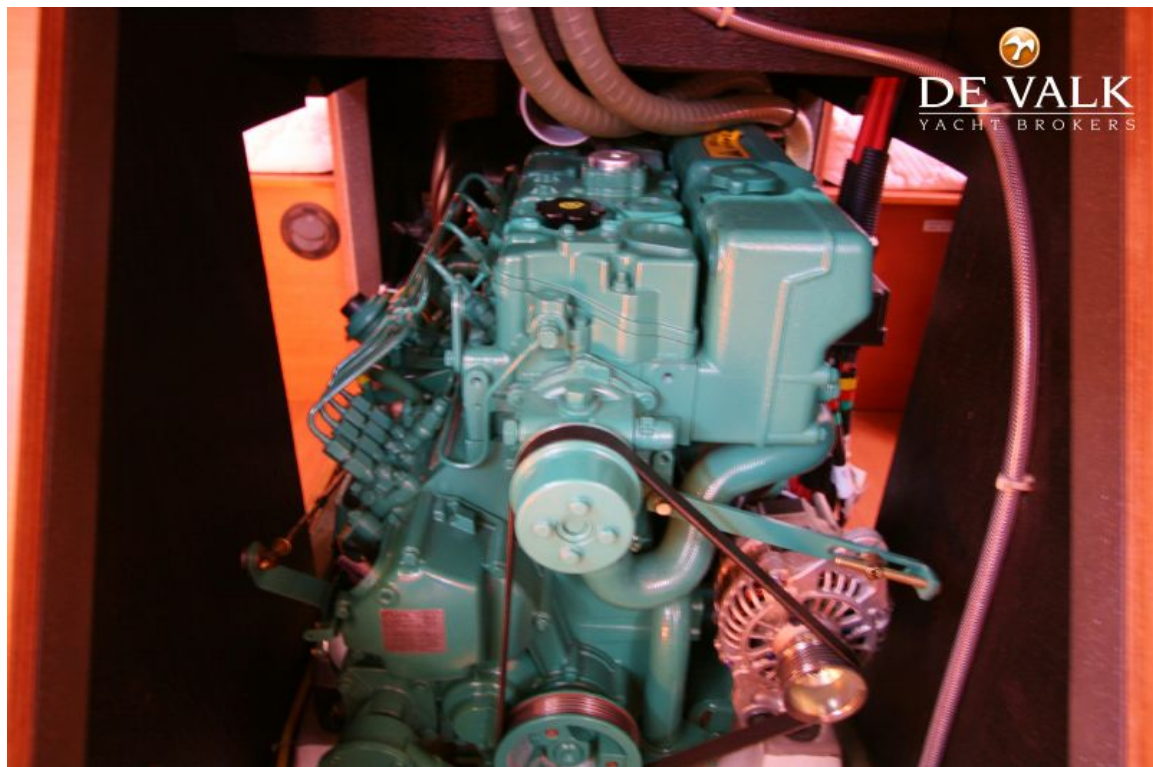
DUFOUR 445 GRAND LARGE



DUFOUR 445 GRAND LARGE



DUFOUR 445 GRAND LARGE



DUFOUR 445 GRAND LARGE

