



## HALLBERG RASSY 40



DE VALK  
YACHT BROKERS

# HALLBERG RASSY 40

## BROKER'S COMMENTS

The Hallberg Rassy 40 was an instant success upon her introduction. "Antarctica" is in as-new condition and comes very well equipped. Without looking at trends, she is a classic quality yacht built to highest standards in respect of equipment and comfort. Good storage above and below decks and a sheltered centre cockpit. This Hallberg Rassy 40 is ideal for long distance leisure cruising.

*Henk Sijbranda*

## SPECIFICATIONS

|                     |                               |                |                         |
|---------------------|-------------------------------|----------------|-------------------------|
| <b>Dimensions</b>   | 12.40 x 3.82 x 1.70 (m)       | <b>Builder</b> | Hallberg Rassy Varvs AB |
| <b>Built</b>        | 2008                          | <b>Cabins</b>  | 2                       |
| <b>Material</b>     | GRP                           | <b>Berths</b>  | 5                       |
| <b>Engine(s)</b>    | 1 x Volvo Penta D2-55E diesel | <b>Hp/Kw</b>   | 55.00 (hp), 40.42 (kw)  |
| <b>Asking price</b> | sold (VAT )                   | <b>Lying</b>   | contact Hindeloopen     |

## CONTACT

|                     |   |                  |                       |
|---------------------|---|------------------|-----------------------|
| <b>Sales office</b> | De Valk Hindeloopen B.V.                    | <b>Telephone</b> | +31 514 52 40 00      |
| <b>Address</b>      | Oosterstrand 1<br>8713 JS Hindeloopen<br>NL | <b>E-mail</b>    | hindeloopen@devalk.nl |

## DISCLAIMER

These particulars are given in good faith as supplied but cannot be guaranteed.



# HALLBERG RASSY 40

## GENERAL

|                            |                         |
|----------------------------|-------------------------|
| Model                      | HALLBERG RASSY 40       |
| Type                       | sailing yacht           |
| LOA (m)                    | 12,40                   |
| Beam (m)                   | 3,82                    |
| Draft (m)                  | 1,70                    |
| Air draft (m)              | 18,30                   |
| Headroom (m)               | 1,95                    |
| Year built                 | 2008                    |
| Builder                    | Hallberg Rassy Varvs AB |
| Country                    | Sweden                  |
| Designer                   | Germán Frers            |
| Displacement (t)           | 10                      |
| Ballast (tonnes)           | 4,1                     |
| CE norm                    | A                       |
| Hull material              | GRP                     |
| Hull colour                | white                   |
| Hull shape                 | round-bilged            |
| Keel type                  | fin keel with bulb      |
| Superstructure material    | GRP                     |
| Rubbing strake             | stainless steel         |
| Deck material              | GRP                     |
| Deck finish                | teak                    |
| Superstructure deck finish | teak                    |
| Cockpit deck finish        | teak                    |
| Antifouling (year)         | 2013                    |
| Dorades                    | 2x                      |
| Window frame               | aluminium Lewmar        |
| Deckhatch                  | 4x Lewmar               |
| Fuel tank (litre)          | stainless steel 240     |
| Fuel tank 2 (litre)        | 220                     |



|                              |                           |
|------------------------------|---------------------------|
| Level indicator (fuel tank)  | yes                       |
| Freshwater tank (litre)      | stainless steel 460       |
| Level indicator (freshwater) | yes                       |
| Blackwater tank (litre)      | stainless steel 80        |
| Level indicator (blackwater) | yes                       |
| Blackwater tank extraction   | deck extraction + uw line |
| Wheel steering               | mechanical                |
| Emergency tiller             | yes                       |

## ACCOMMODATION

|                         |  |
|-------------------------|--|
| Cabins                  | 2  |
| Berths                  | 5  |
| Interior                | mahogany                                   |
| Floor                   | teak and holly                             |
| Saloon                  | yes  |
| Headroom saloon (m)     | 1,92                                       |
| Heating                 | diesel ducted hot air Webasto 3,5kw airtop |
| Chart table             | yes  |
| Aft Cabin               | 1x   |
| Galley                  | yes  |
| Countertop              | Duropol                                    |
| Sink                    | stainless steel 2x                         |
| Cooker                  | calor gas ENO 2 burner                     |
| Oven                    | In cooker                                  |
| Fridge                  | Isotherm                                   |
| Freezer                 | Isotherm                                   |
| Hot water system        | 220V + engine                              |
| Water pressure system   | electrical                                 |
| Manual and/or foot pump | yes  |
| Owners cabin            | double bed + single bed                    |
| Bed length (m)          | 2  |



# HALLBERG RASSY 40

|                |                         |
|----------------|-------------------------|
| Wardrobe       | hanging/drawers/shelves |
| Guest cabin 1  | v-bed                   |
| Bed length (m) | 2,05                    |
| Wardrobe       | hanging and drawers     |
| Bathroom       | shared                  |
| Toilet         |                         |
| Toilet system  | manual                  |
| Wash basin     | in the bathroom         |
| Shower         | yes                     |

## MACHINERY

|                       |                           |
|-----------------------|---------------------------|
| No of engines         | 1                         |
| Make                  | Volvo Penta               |
| Type                  | D2-55E                    |
| HP                    | 55,00                     |
| kW                    | 40,42                     |
| Fuel                  | diesel                    |
| Year installed        | 2008                      |
| Maximum speed (kn)    | 8,3                       |
| Cruising speed (kn)   | 7,0                       |
| Consumption (l/hr)    | 2,5 @ 6kn                 |
| Engine hours          | 1680                      |
| Engine cooling system | freshwater heat exchanger |
| Drive                 | sail-drive                |
| Engine controls       | bowden cable              |
| Gearbox               | hydraulic Semiflex        |
| Bowthruster           | electric 8pk Sleipner     |
| Exhaust               | watercooled               |
| Thrust bearing        | yes                       |
| Propeller type        | folding Flexofold         |
| Propeller blades      | 3 + ropecutter            |



|                                 |   |
|---------------------------------|---|
| <b>Propeller shaft material</b> | stainless steel   |
| <b>Shaft lubrication</b>        | water   |
| <b>Manual bilge pump</b>        | yes   |
| <b>Electric bilge pump</b>      | yes   |
| <b>Bilge alarm</b>              | yes   |
| <b>Electrical installation</b>  | 12 / 220 Volt   |
| <b>Batteries</b>                | new - 2015  |
| <b>Start battery</b>            | 100 ah  |
| <b>Service battery</b>          | Domestic circuit 2x 285 Ah (4x6V arranged in two banks) |
| <b>Battery monitor</b>          | Mastervolt  |
| <b>Battery charger/inverter</b> | Matervolt Combi 12/2000 - 100                           |
| <b>Solar panel</b>              | yes   |
| <b>Shorepower</b>               | with cable  |

## NAVIGATION

|                               |                                  |
|-------------------------------|----------------------------------|
| <b>Compass</b>                | Silva 125                        |
| <b>Depth sounder</b>          | Raymarine ST60+ and Furuno RD-30 |
| <b>Log</b>                    | Raymarine ST60+                  |
| <b>Windset</b>                | Raymarine ST60+                  |
| <b>VHF</b>                    | Sailor Compact RT2047            |
| <b>VHF handheld</b>           | Simrad HT50                      |
| <b>Autopilot</b>              | Raymarine ST7002                 |
| <b>Rudder angle indicator</b> | On autopilot                     |
| <b>Radar</b>                  | Furuno                           |
| <b>GPS</b>                    | Furuno GP-32                     |
| <b>Radar/GPS/plotter</b>      | Furuno NAVnet vx2                |
| <b>Navtex</b>                 | Furuno NX-300                    |
| <b>AIS receiver</b>           | Furuno                           |
| <b>Radio receiver</b>         | Icom IC-R75                      |
| <b>EPIRB</b>                  | Sailor                           |



## EQUIPMENT

|                            |                       |
|----------------------------|-----------------------|
| Fixed windscreen           | yes                   |
| Sprayhood                  | yes                   |
| Cockpit cover              | yes                   |
| Cockpit table              | yes                   |
| Bathing platform           | yes                   |
| Boarding ladder            | stainless steel       |
| Bow ladder                 | yes                   |
| Deck shower                | yes                   |
| Anchor                     | Delta                 |
| Anchor chain               | Stainless steel 60mtr |
| Anchor 2                   | Bruce                 |
| Anchor chain               | 60mtr                 |
| Windlass                   | electrical Lewmar     |
| Outboard support           | yes                   |
| Sea railing                | stainless steel       |
| Grab rail (superstructure) | teak                  |
| Railing side opening gates | yes                   |
| Pushpit                    | yes                   |
| Pulpit                     | yes                   |
| Lifebuoy                   | yes                   |
| Safety lines on deck       | yes                   |
| Horn                       | air pressure          |
| Radar reflector            | Sea-Me                |
| Fenders                    | yes                   |
| Mooring lines              | yes                   |
| Speakers in salon          | Bose                  |
| Clock - barometer          | Wempe                 |
| Fire extinguisher          | yes                   |
| Latest extinguisher survey | must be inspected     |
| Extra info                 | safe                  |



## RIGGING

|                         |                           |
|-------------------------|---------------------------|
| Rigging                 | fractional with backstays |
| Standing rigging        | wire                      |
| Brand mast              | Seldén                    |
| Material mast           | aluminium                 |
| Spreaders               | 3                         |
| Mainsail                | Elvstrom offshore         |
| Stoway mast             | yes                       |
| Cutterstay              | yes                       |
| Jib                     | yes                       |
| Genoa                   | Elvstrom                  |
| Genoa furler            | Furlex 300S               |
| Gennaker                | 90 m²                     |
| Stormjib                | 13,6 m²                   |
| Reefing System          | main in-mast furling      |
| Backstay adjuster       | Seldén                    |
| Boomvang                | gasspring                 |
| Primary sheet winch     | 2x Lewmar 30              |
| Genoa sheetwinches      | 2x Lewmar 50              |
| Reefing winch           | 1x Lewmar 40              |
| Multifunctional winches | 1x Lewmar 40              |
| Spi-pole                | aluminium On mast         |
| Jockey-pole             | aluminium                 |
| Gennaker pole           | yes                       |





# HALLBERG RASSY 40



# HALLBERG RASSY 40



# HALLBERG RASSY 40





# HALLBERG RASSY 40



# HALLBERG RASSY 40





# HALLBERG RASSY 40



# HALLBERG RASSY 40



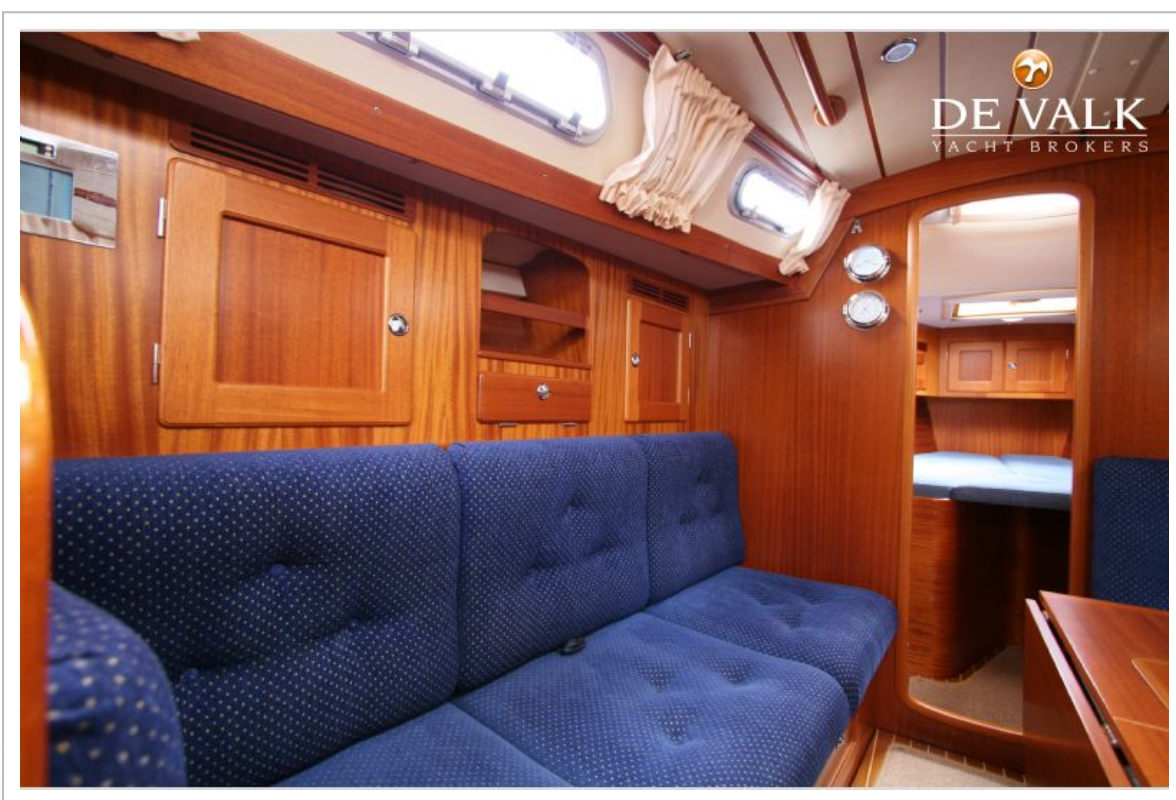
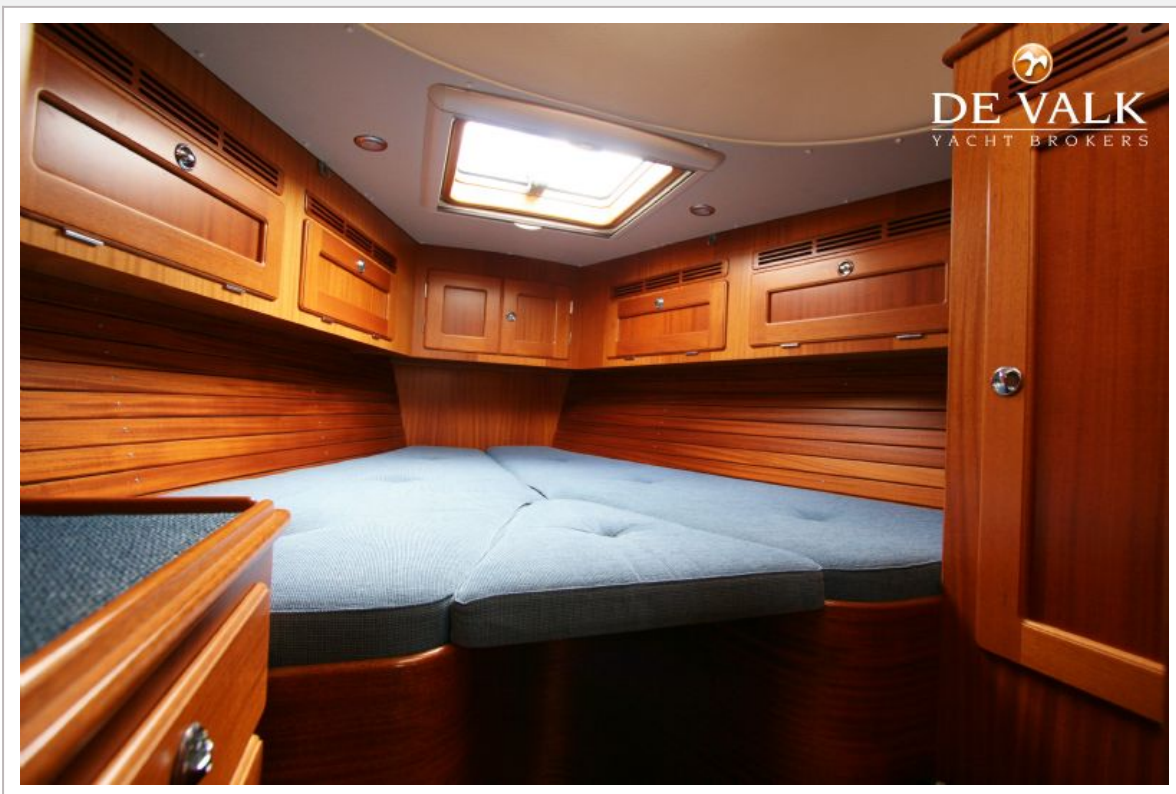


# HALLBERG RASSY 40

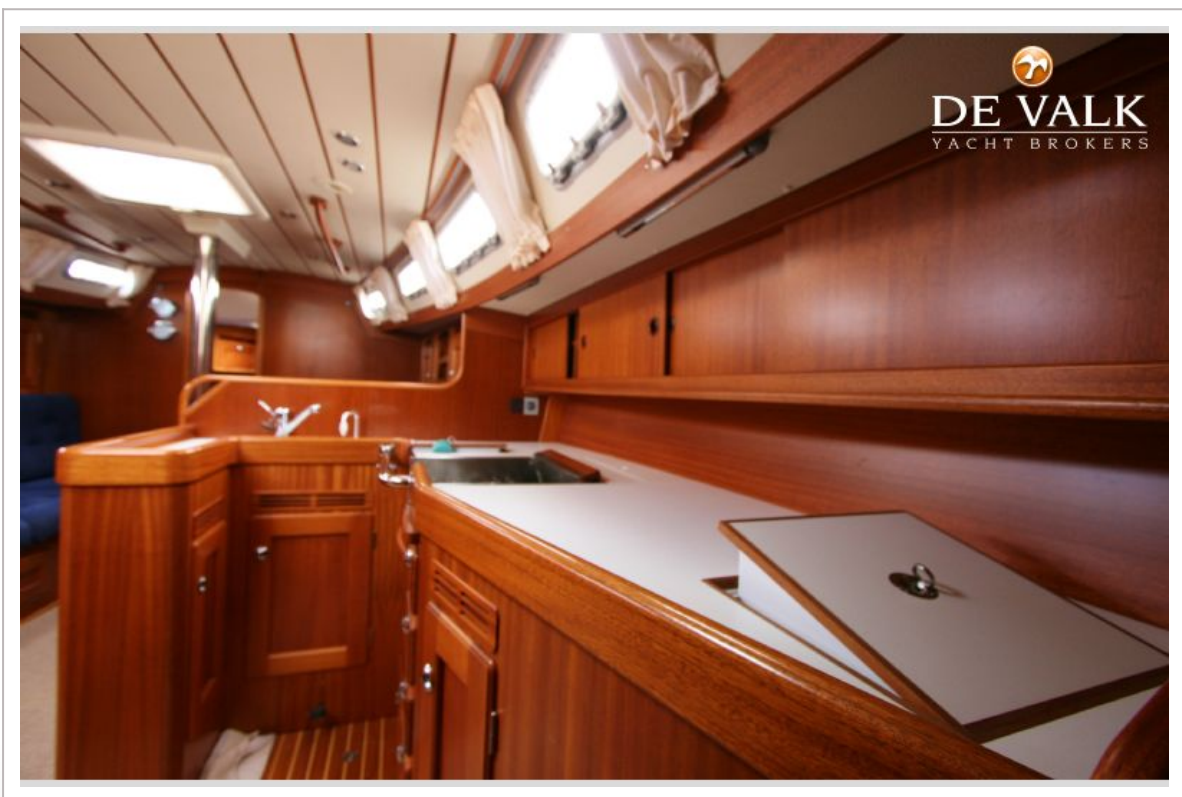




# HALLBERG RASSY 40



# HALLBERG RASSY 40





# HALLBERG RASSY 40

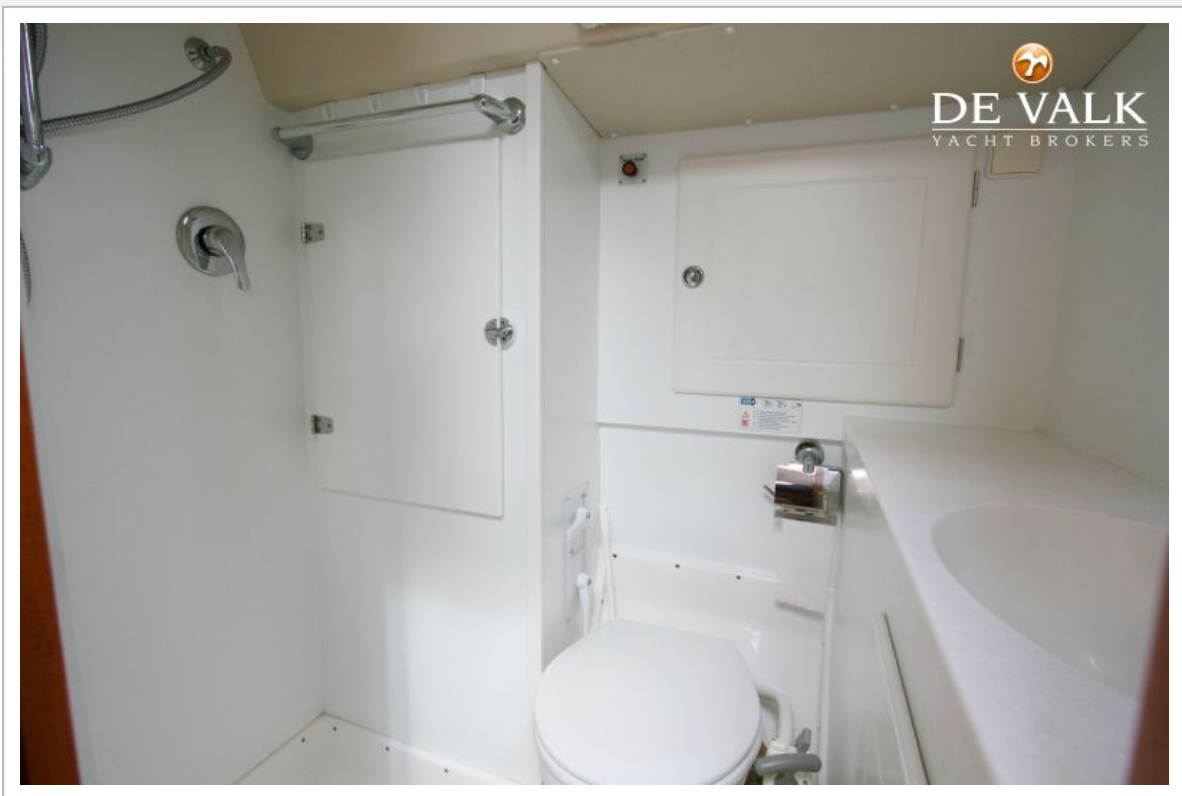


# HALLBERG RASSY 40





# HALLBERG RASSY 40



# HALLBERG RASSY 40



# HALLBERG RASSY 40

