



DE VALK
YACHT BROKERS

Sister Ship



BAVARIA 38 CRUISER



DE VALK
YACHT BROKERS

BROKERAGE | CHARTER | BERTHS | FINANCE | INSURANCE | YACHT MANAGEMENT

BAVARIA 38 CRUISER

BROKER'S COMMENTS

The Bavaria 38 is a perfect family cruiser. The "Nicole" is among others equipped with a stoway mast, furling headsail, two cabins, sail drive, heating and bow thruster. She is very well maintained by her owner, every winter she has been checked by the yard. This Bavaria 38 is in an absolute perfect condition.

Johan Schootstra

SPECIFICATIONS

Dimensions	11.72 x 3.90 x 1.65 (m)	Builder	Bavaria Yachtbau
Built	2008	Cabins	2
Material	GRP	Berths	6
Engine(s)	1 x Volvo Penta D1-30 B diesel	Hp/Kw	27.30 (hp), 20.07 (kw)
Asking price	sold (VAT)	Lying	contact Hindeloopen

CONTACT

Sales office	De Valk Hindeloopen B.V.	Telephone	+31 514 52 40 00
Address	Oosterstrand 1 8713 JS Hindeloopen NL	E-mail	hindeloopen@devalk.nl

DISCLAIMER

These particulars are given in good faith as supplied but cannot be guaranteed.



BAVARIA 38 CRUISER

GENERAL

Model	BAVARIA 38 CRUISER
Type	sailing yacht
LOA (m)	11,72
LWL (m)	9,90
Beam (m)	3,90
Draft (m)	1,65
Air draft (m)	16,00
Headroom (m)	2,00
Year built	2008
Builder	Bavaria Yachtbau
Country	Germany
Designer	J&J Design
Displacement (t)	7,2
Ballast (tonnes)	cast iron 2,1
CE norm	A
Hull material	GRP
Hull colour	white
Hull shape	round-bilged
Keel type	fin keel
Superstructure material	GRP
Rubbing strake	stainless steel Teak with
Deck material	GRP
Deck finish	anti-slip moulded in
Superstructure deck finish	anti-slip moulded in
Cockpit deck finish	teak
Dorades	2
Window frame	aluminium
Window material	polycarbonate
Deckhatch	8
Portholes	aluminium 2



BAVARIA 38 CRUISER

Fuel tank (litre)	polyethylene 150
Level indicator (fuel tank)	yes
Freshwater tank (litre)	polyethylene 2x 210
Level indicator (freshwater)	yes
Blackwater tank (litre)	polyethylene
Wheel steering	mechanical
Emergency tiller	yes

ACCOMMODATION

Cabins	2
Berths	6
Interior	mahogany
Floor	teak and holly
Saloon	yes
Headroom saloon (m)	1,97
Heating	diesel ducted hot air Webasto 3,5kW
Chart table	yes
Galley	yes
Countertop	
Sink	stainless steel 2x
Cooker	calor gas 2 burner
Oven	In Cooker
Microwave	Siemens
Fridge	yes
Hot water system	220V + engine
Water pressure system	electrical
Owners cabin	French bed
Bed length (m)	2
Wardrobe	shelves and hanging
Bathroom	shared
Toilet	shared



BAVARIA 38 CRUISER

Toilet system	manual
Wash basin	in the bathroom
Shower	shared
Guest cabin 1	double bed
Bed length (m)	2
Wardrobe	shelves and hanging

MACHINERY

No of engines	1
Make	Volvo Penta
Type	D1-30 B
HP	27,30
kW	20,07
Fuel	diesel
Year installed	2008
Maximum speed (kn)	7
Engine hours	500
Engine cooling system	freshwater heat exchanger
Drive	sail-drive
Engine controls	mechanical
Bowthruster	electric Side-Power SE 80
Propeller type	folding
Propeller blades	3
Manual bilge pump	yes
Electric bilge pump	yes
Electrical installation	12 / 220 Volt
Start battery	1x 55 Amp
Service battery	2x 140 Amp
Bowthruster battery	yes
Battery charger	Quick 45amp automatic
Shorepower	with cable



BAVARIA 38 CRUISER

NAVIGATION

Compass	Plastimo Olympic 135
Depth sounder	Raymarine ST60+ Tridata
Log	Raymarine ST60+ Tridata
Windset	Raymarine ST60+ Wind
VHF	Ray 240E
Plotter	Raymarine E7 Hybrid Multi Touch

EQUIPMENT

Sprayhood	yes
Cockpit table	yes
Bathing platform	electric
Boarding ladder	stainless steel
Deck shower	yes
Anchor	CQR Plough
Anchor chain	8mm - 50 mtr.
Windlass	electrical
Sea railing	wire
Grab rail (superstructure)	stainless steel
Railing side opening gates	yes
Pushpit	yes
Pulpit	yes
Radar reflector	Tri-lens
Fenders	yes
Mooring lines	yes
Radio-cd player	Sony
Speakers in salon	yes

RIGGING

Rigging	sloop
---------	-------



BAVARIA 38 CRUISER

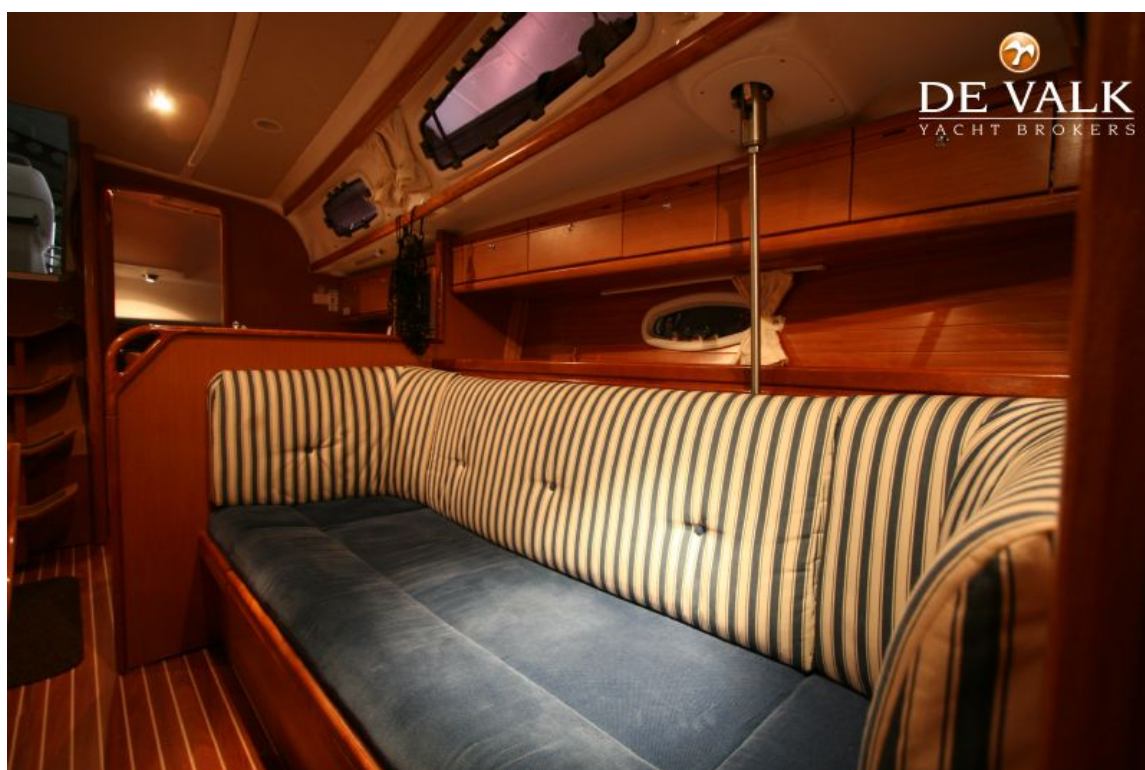
Standing rigging	wire
Brand mast	Seldén
Material mast	aluminium
Spreaders	2
Mainsail	yes
Fully battened mainsail	yes
Stoway mast	yes
Genoa	yes
Genoa furler	yes
Reefing System	main in-mast furling
Backstay adjuster	tackle
Boomvang	gasspring
Primary sheet winch	2x Lewmar ST40
Genoa sheetwinches	2x Lewmar ST40
Halyard winches	2x Lewmar ST30



BAVARIA 38 CRUISER



BAVARIA 38 CRUISER



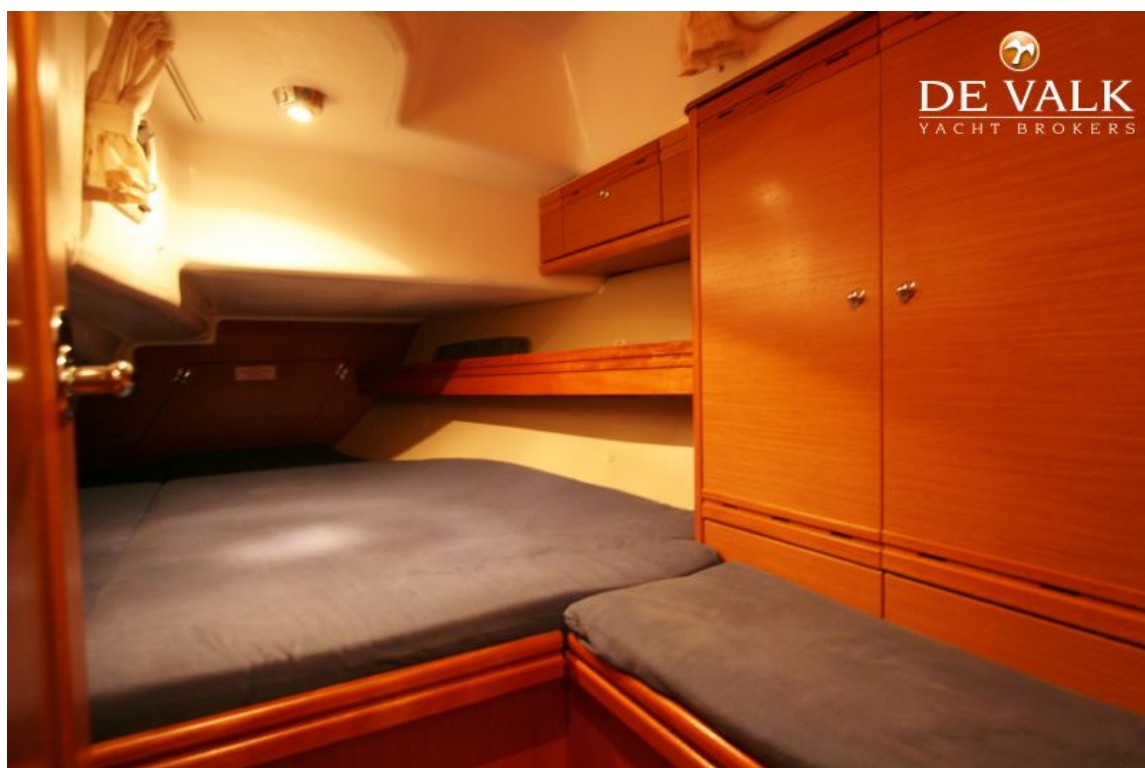
BAVARIA 38 CRUISER



BAVARIA 38 CRUISER



BAVARIA 38 CRUISER



BAVARIA 38 CRUISER

