



DE VALK
YACHT BROKERS



EVERSHIP 45 PATROL



DE VALK
YACHT BROKERS

EVERSHIP 45 PATROL

BROKER'S COMMENTS

The Ever 45 Patrol Ship is a vessel that makes its rugged exterior comes true. The fully synthetic Strong Shelf / composite construction ensures strength and rigidity. The open cockpit is spacious and can be spanned by a clever system with a cockpit cover. The separate shower facility is very practical. The in the wheelhouse situated kitchen is spacious. The Ever 45 Patrol Ship offers generous space for the owner and 2 guests in their own cabin. Bow thruster, electric windlass, electric sunroof, electric lowerable radar mast and warm air heating be present.

Henk Sijbranda

SPECIFICATIONS

Dimensions	13.85 x 4.12 x 1.10 (m)	Builder	Eversail
Built	2006	Cabins	2
Material	Strongplank	Berths	4
Engine(s)	2 x Volvo D6-310 DP-H diesel	Hp/Kw	2 x 310.00 (hp), 227.85 (kw)
Asking price	sold (VAT)	Lying	at sales office

CONTACT

Sales office	De Valk Hindeloopen B.V.	Telephone	+31 514 52 40 00
Address	Oosterstrand 1 8713 JS Hindeloopen NL	E-mail	hindeloopen@devalk.nl

DISCLAIMER

These particulars are given in good faith as supplied but cannot be guaranteed.



EVERSHIP 45 PATROL

GENERAL

Model	EVERSHIP 45 PATROL
Type	motor yacht
LOA (m)	13,85
LWL (m)	11,60
Beam (m)	4,12
Draft (m)	1,10
Air draft (m)	2,70
Headroom (m)	1,98
Year built	2006
Builder	Eversail
Country	The Netherlands
Designer	Langenberg
Displacement (t)	8,5
CE norm	B
Hull material	strongplank
Hull colour	grey
Hull shape	deep-V
Superstructure material	wood epoxy
Rubbing strake	rubber
Deck material	wood epoxy
Deck finish	anti-slip paint
Superstructure deck finish	paint
Cockpit deck finish	teak
Antifouling (year)	2015
Dorades	2x
Window frame	aluminium
Window material	double glazing
Deckhatch	4x
Radar arch	collapsible Electric
Fuel tank (litre)	GRP 2x 800



EVERSHIP 45 PATROL

Level indicator (fuel tank)	yes
Freshwater tank (litre)	GRP 600
Level indicator (freshwater)	yes
Blackwater tank (litre)	polyethylene
Level indicator (blackwater)	yes
Blackwater tank extraction	deck extraction + uw line
Wheel steering	hydraulic
Inside helm position	yes
Extra info	large electric sliding roof in wheelhouse

ACCOMMODATION

Cabins	2
Berths	4
Interior	teak
Floor	teak and holly
Open cockpit	yes
Saloon	yes
Headroom saloon (m)	1,98
Heating	diesel ducted hot air Webasto
Chart table	yes
Dinette	yes
Opening door to cockpit	yes
Galley	yes
Countertop	corian
Sink	stainless steel 2x
Cooker	electric 2 x 2 burner
Oven	Siemens
Microwave	yes
Fridge	with freezer compartment Two - one
Hot water system	220V + engine
Water pressure system	electrical



EVERSHIP 45 PATROL

Owners cabin	French bed
Bed length (m)	2,10
Wardrobe	shelves and hanging
Guest cabin 1	twin single
Bed length (m)	2,01
Wardrobe	shelves and hanging
Wash basin	in the cabin
Toilet	separate
Toilet system	electric
Wash basin	at the toilet
Shower	separate

MACHINERY

No of engines	2
Make	Volvo
Type	D6-310 DP-H
HP	310,00
kW	227,85
Fuel	diesel
Maximum speed (kn)	30
Cruising speed (kn)	8,5
Consumption (l/hr)	12 @ 2000
Engine hours	1098 (21-5-2015)
Engine cooling system	freshwater heat exchanger
Drive	stern
Engine controls	electrical
Bowthruster	electric
Propeller type	fixed Duoprop
Propeller blades	4
Manual bilge pump	yes
Electric bilge pump	yes



EVERSHIP 45 PATROL

Electrical installation	12 / 220 V
Generator	wet exhaust Wisper 8 Ultra
Start battery	2x 80Ah
Service battery	4x 120Ah
Generator battery	1x 80Ah
Bowthruster battery	2x 120Ah
Battery monitor	yes
Battery charger/inverter	Mastervolt Mass Combi 12/2000 - 100
Shorepower	with cable
Insulation transformer	Mastervolt galvanic isolation transformer
Extra info	Mastervolt automatic transfer switch

NAVIGATION

Compass	Plastimo Contest 130
Depth sounder	Raymarine Tridata ST60+
Log	Raymarine Tridata ST60+
Windset	Raymarine Wind ST 60+
VHF	Ray 240E
Autopilot	Raymarine Smartpilot ST6002
Rudder angle indicator	2x
Radar	Raymarine
Radar/GPS/plotter	Raymarine E120
Navtex	McMurdo ICS Nav6
Electronic chart(s)	yes

EQUIPMENT

Bimini	yes
Cockpit cushions	yes
Cockpit table	yes
Cockpit chairs	yes
Bathing platform	yes



EVERSHIP 45 PATROL

Boarding ladder	stainless steel
Transom door	yes
Deck shower	yes
Anchor	Bruce Stainless steel
Anchor chain	yes
Windlass	electrical
Deck wash	yes
Sea railing	stainless steel
Grab rail (superstructure)	stainless steel
Railing side opening gates	yes
Pulpit	yes
Life raft	container
Life raft (pers)	4
Horn	air pressure
Fenders	yes
Mooring lines	yes
Spare parts	Fuelfilters
TV	yes
TV receiver	yes
Radio-cd player	yes
Cockpit speakers	yes
Speakers in salon	yes
Clock - barometer	yes
Fire extinguisher	yes



EVERSHIP 45 PATROL



EVERSHIP 45 PATROL



EVERSHIP 45 PATROL



EVERSHIP 45 PATROL



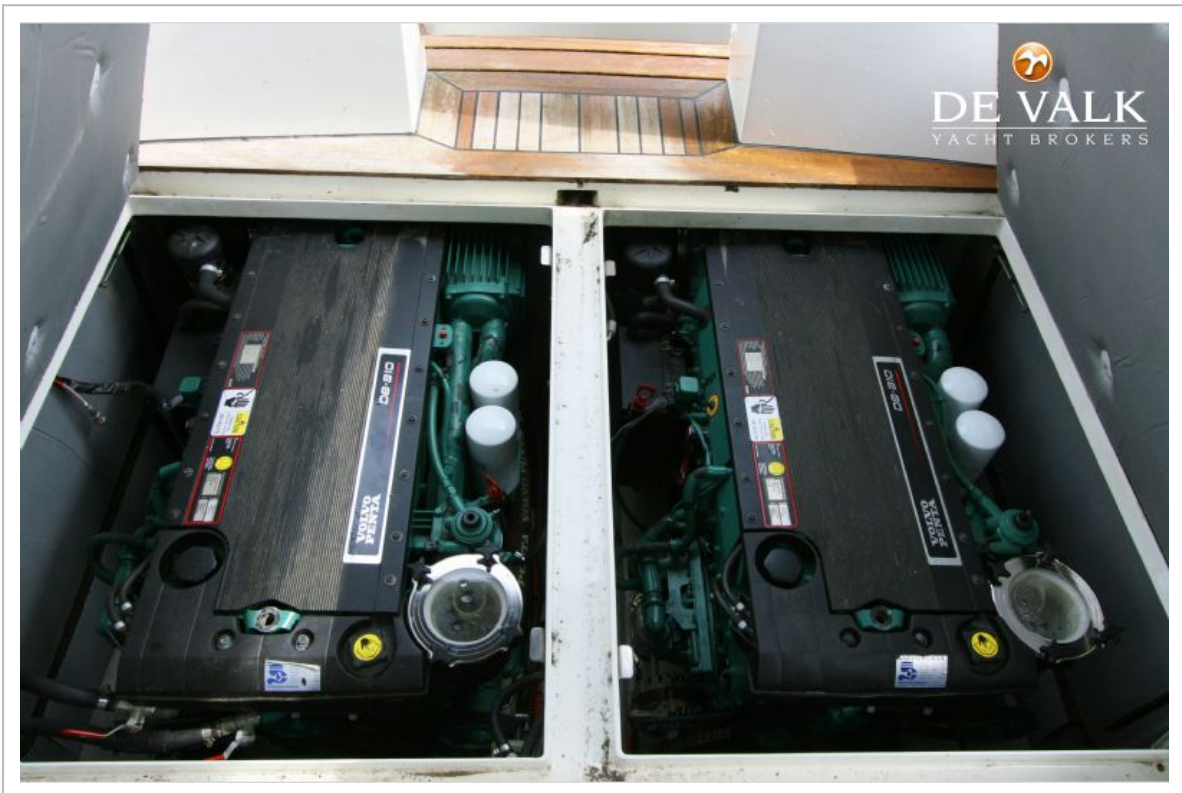
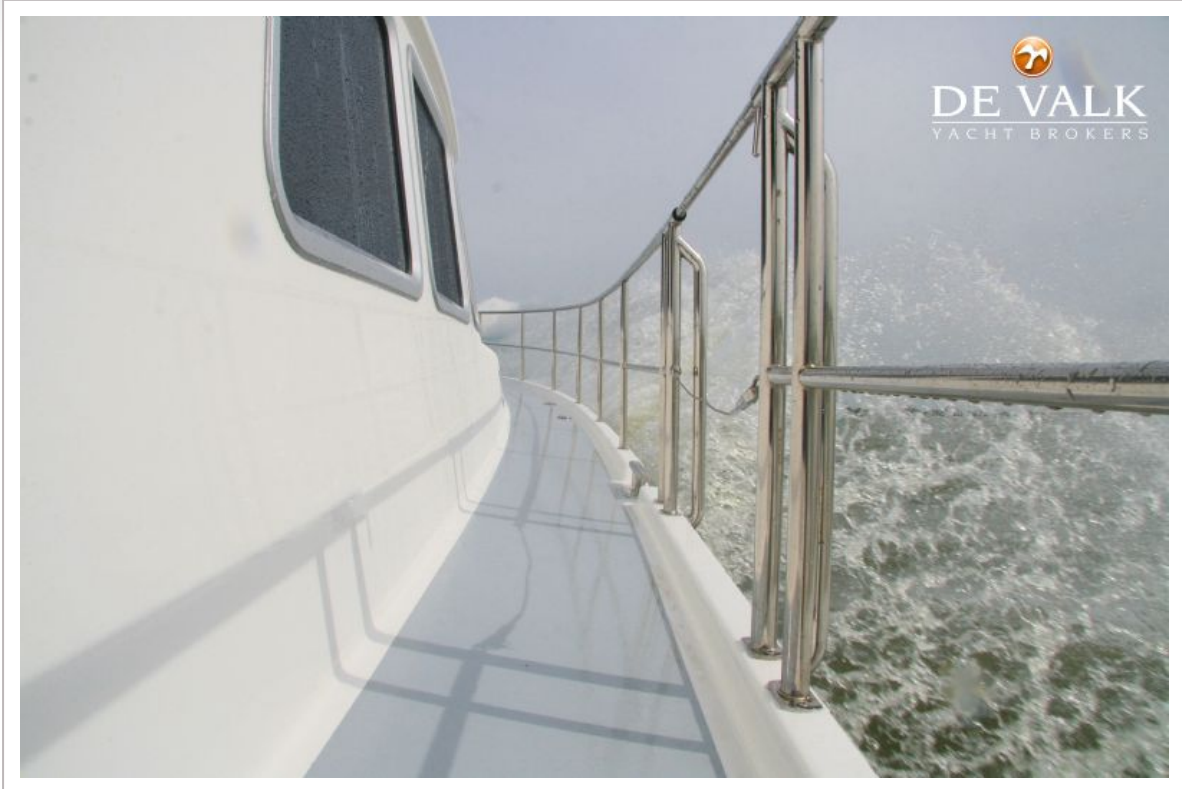
EVERSHIP 45 PATROL



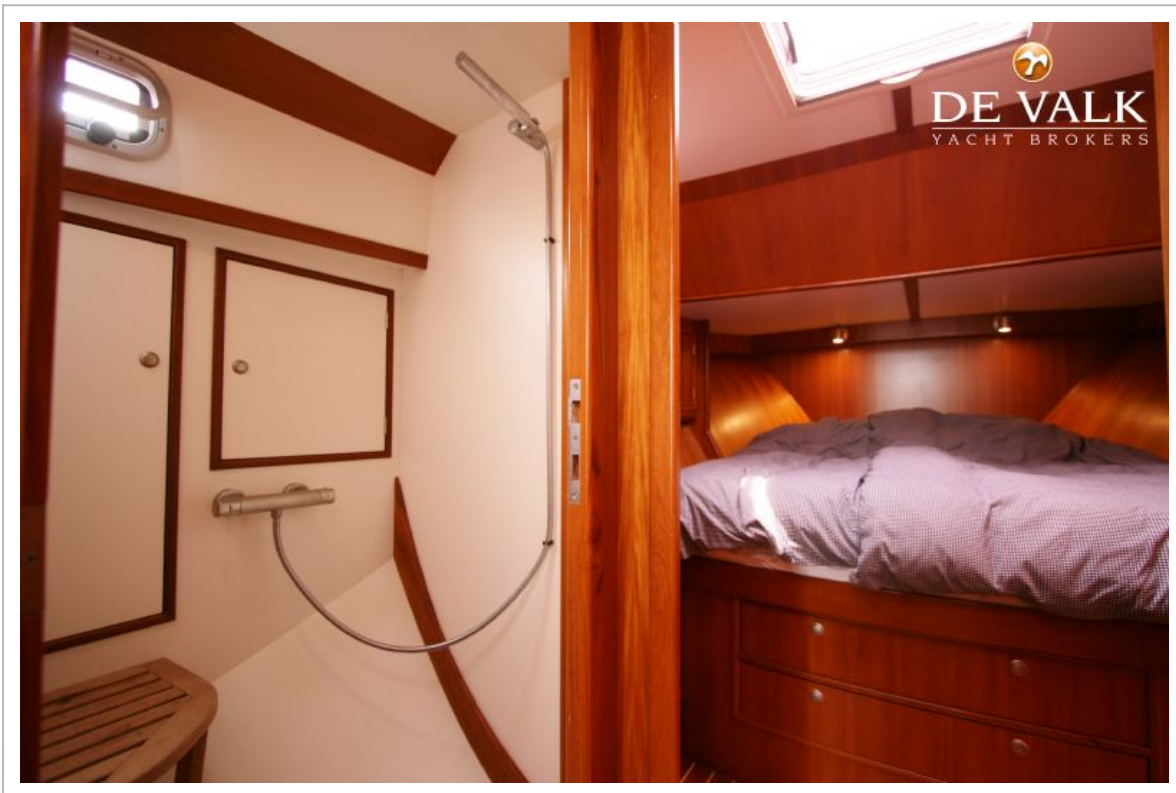
EVERSHIP 45 PATROL



EVERSHIP 45 PATROL



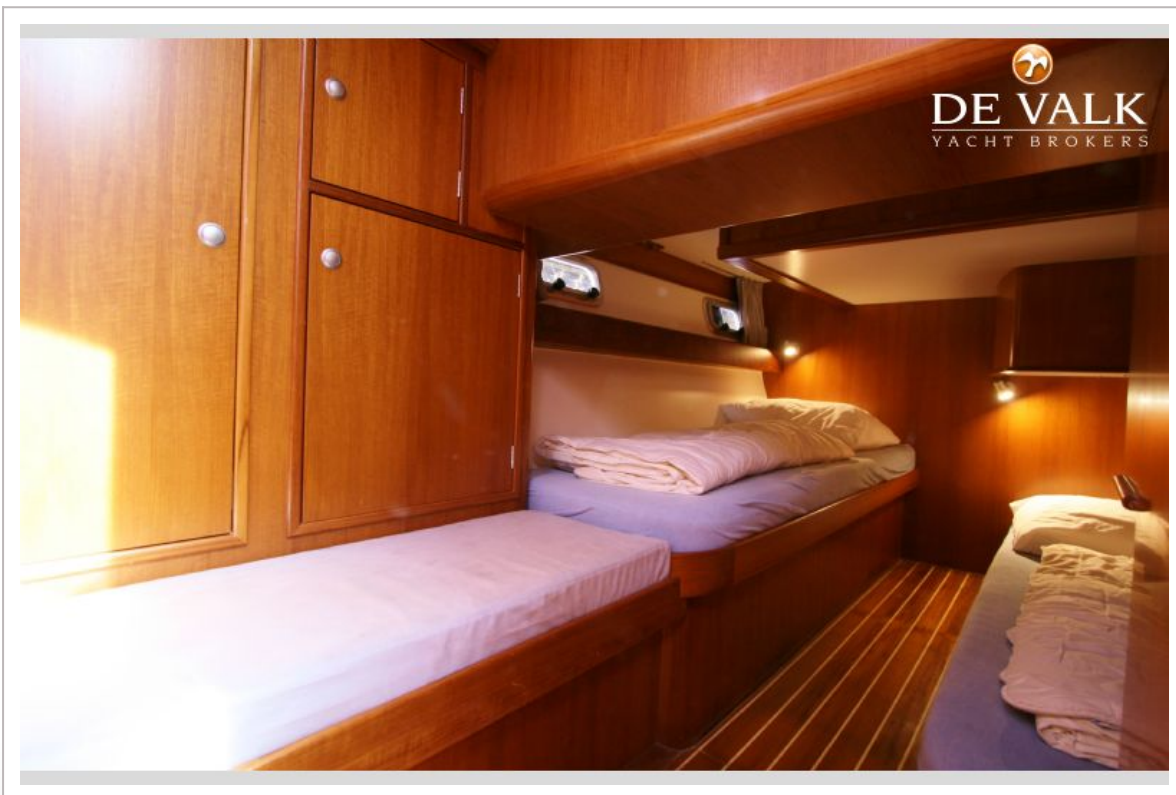
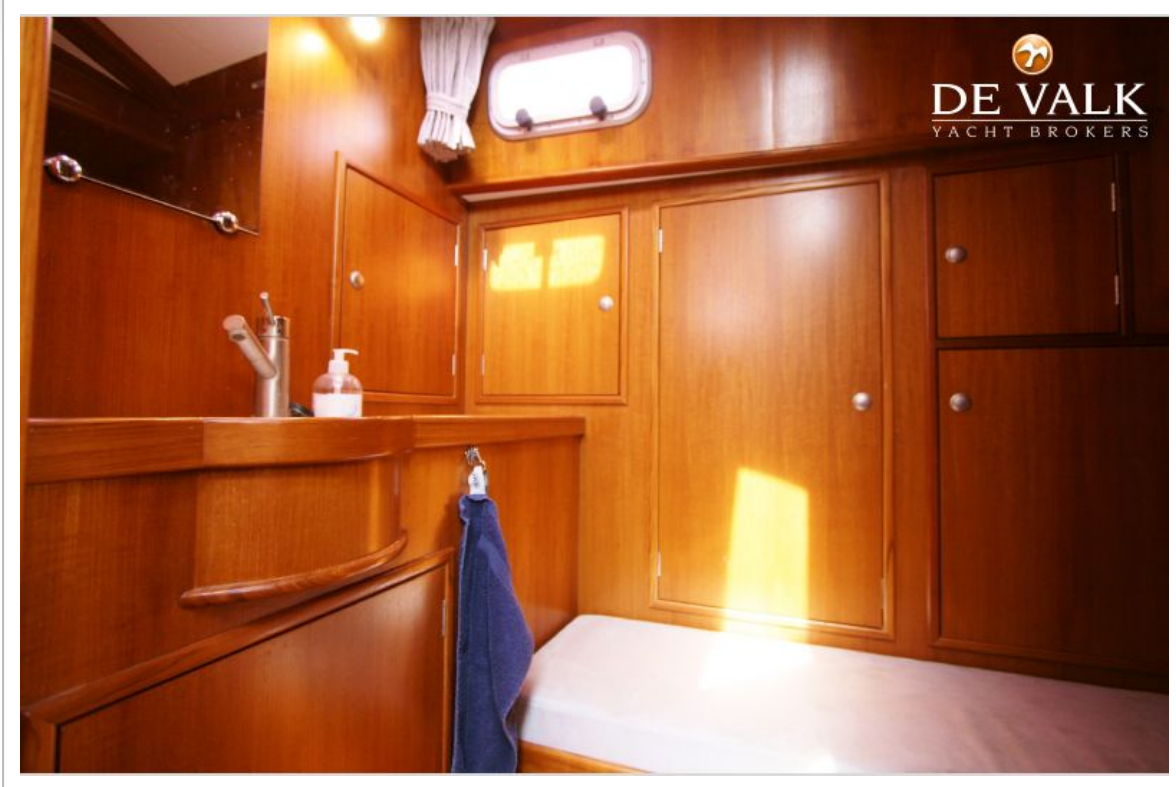
EVERSHIP 45 PATROL



EVERSHIP 45 PATROL



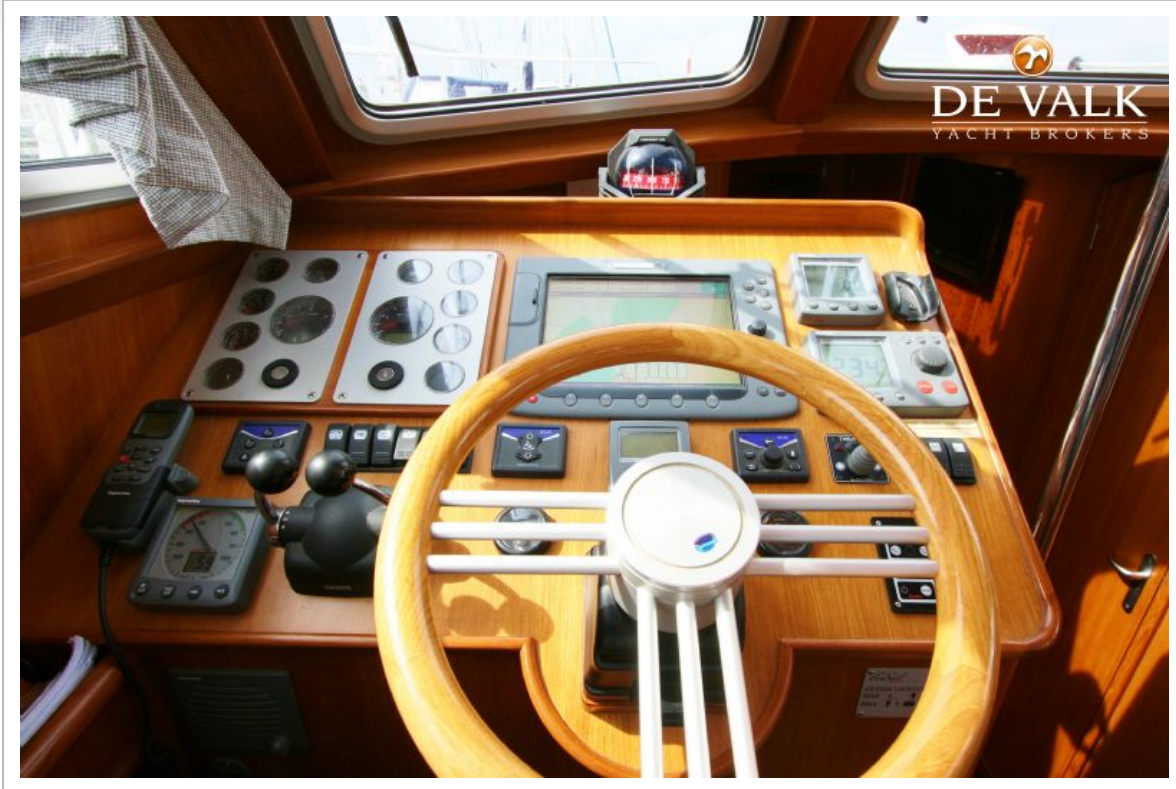
EVERSHIP 45 PATROL



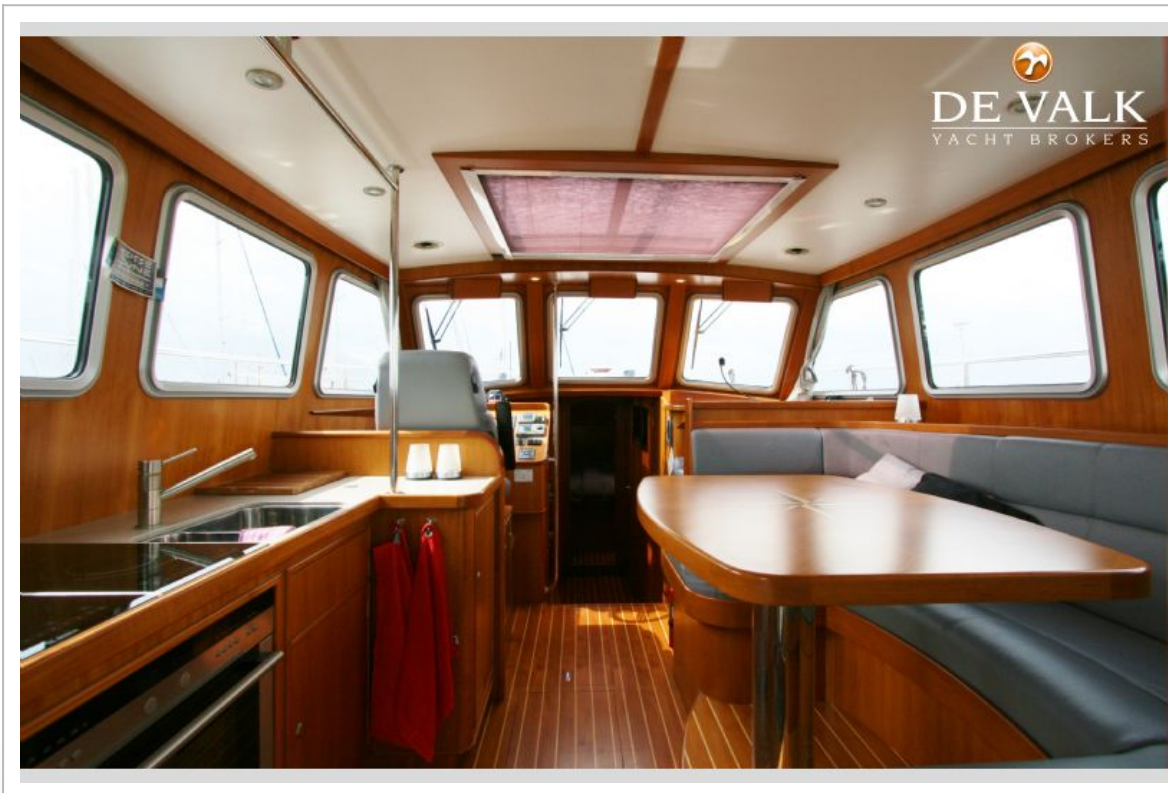
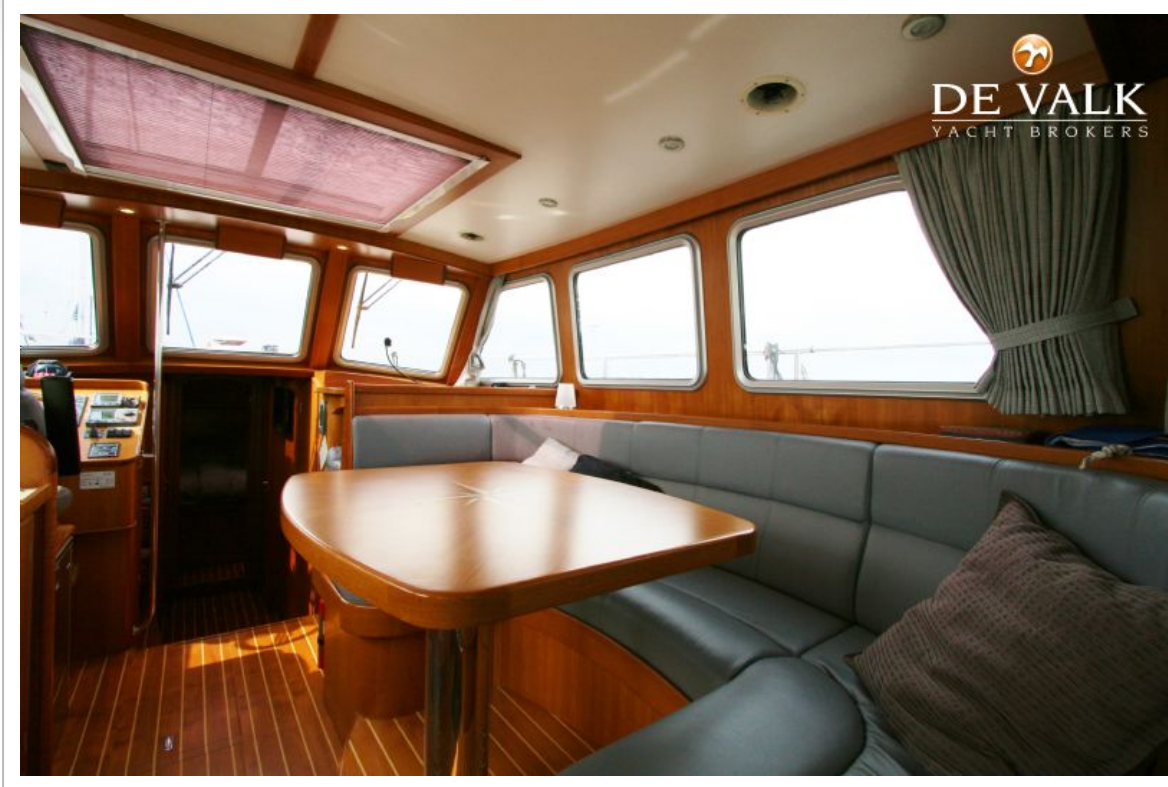
EVERSHIP 45 PATROL



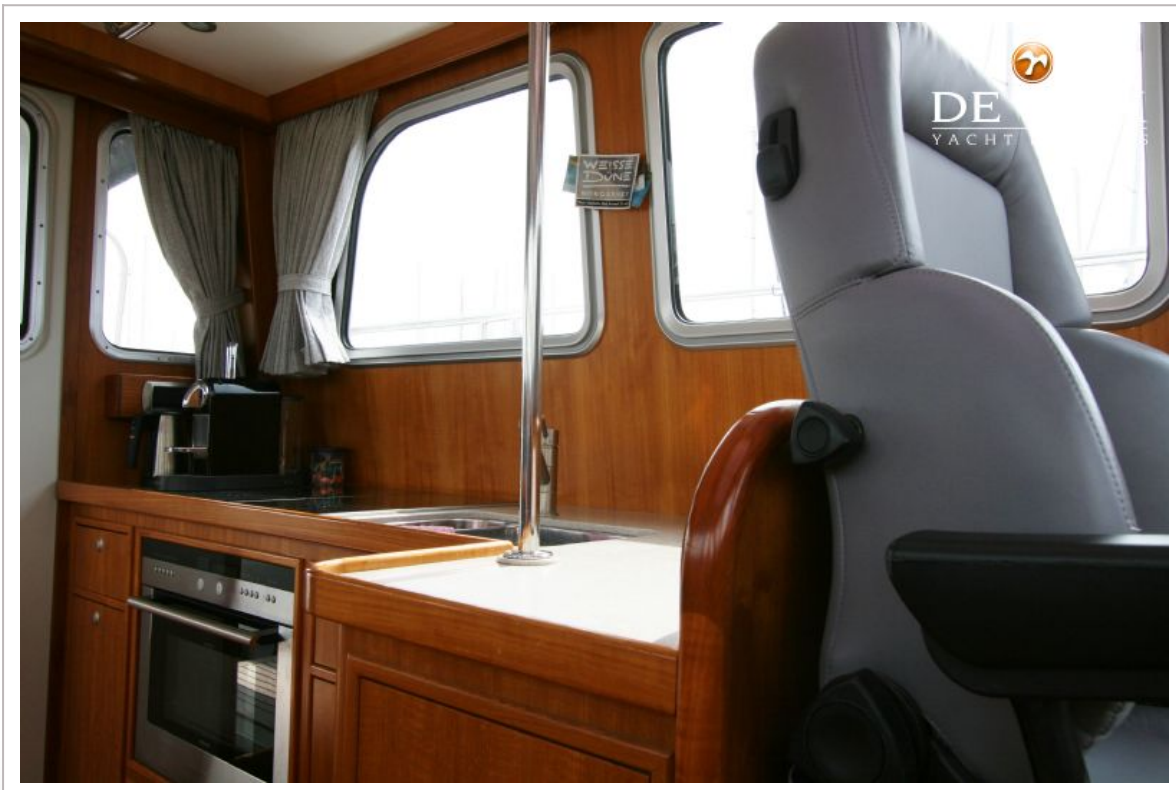
EVERSHIP 45 PATROL



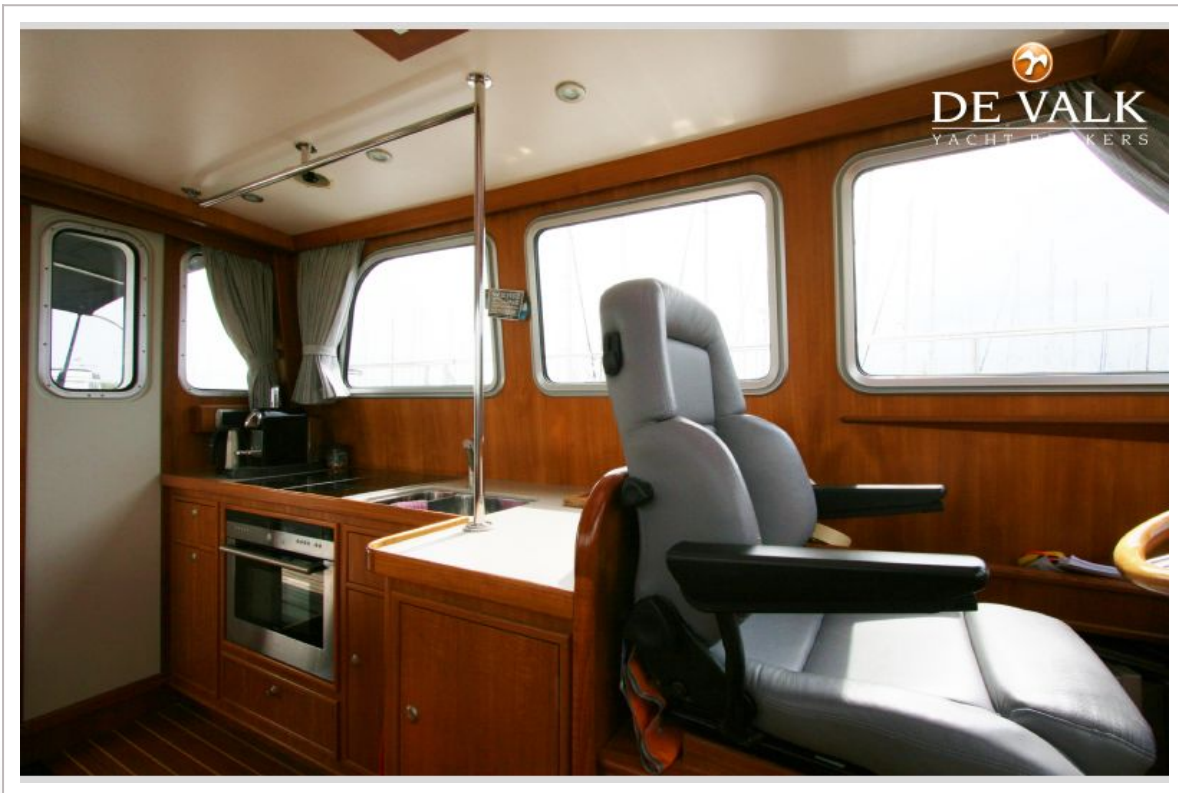
EVERSHIP 45 PATROL



EVERSHIP 45 PATROL



EVERSHIP 45 PATROL



EVERSHIP 45 PATROL

