



## JEANNEAU SUN FAST 40

# JEANNEAU SUN FAST 40

## BROKER'S COMMENTS

Designed by Daniel Andrieu, the Jeanneau Sun Fast 40 is an excellent performance/family cruiser with ample accommodations to entertain skipper and crew. This is an immaculate Jeanneau Sun Fast is fully equipped, dark blue hull, teak decks, triple spreader keel stepped mast, two electric winches etc. Sailing this well balanced design is a sheer joy, easy to handle and can "goes-around-the-buoys" with the best of them.

*Henri van Eelen*

## SPECIFICATIONS

<b>Dimensions</b>	12.20 x 3.95 x 1.95 (m)	<b>Builder</b>	Jeanneau
<b>Built</b>	2003	<b>Cabins</b>	3
<b>Material</b>	GRP	<b>Berths</b>	8
<b>Engine(s)</b>	1 x Volvo Penta D2 - 55 diesel	<b>Hp/Kw</b>	55.00 (hp), 40.42 (kw)
<b>Asking price</b>	sold (VAT )	<b>Lying</b>	contact Hindeloopen

## CONTACT

<b>Sales office</b>	De Valk Hindeloopen B.V.	<b>Telephone</b>	+31 514 52 40 00
<b>Address</b>	Oosterstrand 1 8713 JS Hindeloopen NL	<b>E-mail</b>	hindeloopen@devalk.nl

## DISCLAIMER

These particulars are given in good faith as supplied but cannot be guaranteed.



# JEANNEAU SUN FAST 40

## GENERAL

Model	JEANNEAU SUN FAST 40
Type	sailing yacht
LOA (m)	12,20
LWL (m)	11,75
Beam (m)	3,95
Draft (m)	1,95
Headroom (m)	1,90
Year built	2003
Builder	Jeanneau
Country	France
Designer	Daniel Andrieu
Displacement (t)	7,3
Ballast (tonnes)	2,62
CE norm	A
Hull material	GRP
Hull colour	blue
Hull shape	round-bilged
Keel type	fin keel with bulb
Superstructure material	GRP
Rubbing strake	stainless steel Teak with
Deck material	GRP
Deck finish	teak
Superstructure deck finish	anti-slip moulded in
Cockpit deck finish	teak
Antifouling (year)	2018
Window frame	aluminium
Window material	tempered glass
Deckhatch	5
Portholes	aluminium 6
Fuel tank (litre)	polyethylene 136



Freshwater tank (litre)	GRP 2x total 320
Level indicator (freshwater)	yes
Wheel steering	mechanical 2x
Emergency tiller	yes

## ACCOMMODATION

Cabins	3
Berths	8
Interior	teak
Floor	teak and holly
Saloon	yes
Headroom saloon (m)	1,90
Heating	diesel ducted hot air Webasto
Chart table	yes
Aft Cabin	2x
Galley	yes
Countertop	Duropal
Sink	stainless steel 2x
Cooker	calor gas
Oven	In cooker
Fridge	with freezer compartment Frigomatic 140L
Hot water system	220V + engine
Water pressure system	electrical
Owners cabin	double bed
Bed length (m)	2,10
Wardrobe	shelves and hanging
Guest cabin 1	double bed
Bed length (m)	2,06
Wardrobe	shelves and hanging
Guest cabin 2	double bed
Bed length (m)	2,06



Wardrobe	shelves and hanging
Toilet	shared
Toilet system	manual Jabsco
Wash basin	at the toilet
Shower	shared

## MACHINERY

No of engines	1
Make	Volvo Penta
Type	D2 - 55
HP	55,00
kW	40,42
Fuel	diesel
Year installed	2003
Engine cooling system	freshwater heat exchanger
Drive	shaft
Engine controls	mechanical
Exhaust	watercooled
Propeller type	feathering
Propeller blades	3
Propeller shaft material	stainless steel
Shaft lubrication	water
Manual bilge pump	yes
Electric bilge pump	yes
Electrical installation	12/ 220V
Batteries	Total 4
Start battery	1
Service battery	3
Battery charger/inverter	yes
Shorepower	with cable



## NAVIGATION

Compass	2x Plastimo
Depth sounder	Raymarine ST60 Tridata
Log	Raymarine ST60 Tridata
Windset	Raymarine ST60 Wind and CH Wind
Repeater	Raymarine ST60 Multi
VHF	Raymarine
Autopilot	Raymarine ST6001 (2 units)
Rudder angle indicator	On autopilot
Radar	Raymarine
Radar/GPS/plotter	Raymarine RL80C and RL70C inside
Electronic chart(s)	yes

## EQUIPMENT

Sprayhood	yes
Cockpit table	yes
Bathing platform	yes
Boarding ladder	stainless steel
Anchor	CQR Plough
Anchor chain	yes
Windlass	electrical
Capstan	yes
Outboard support	yes
Sea railing	wire
Grab rail (superstructure)	teak
Pushpit	yes
Pulpit	yes
Life raft	valise (or bag)
Life raft (pers)	6
Danbuoy	yes
Radar reflector	Sea-me



Fenders	yes
Mooring lines	yes
Radio-cd player	Sony
Speakers in salon	yes
Clock - barometer	yes
Fire extinguisher	yes

## RIGGING

Rigging	sloop
Standing rigging	Rod
Brand mast	Sparcraft
Material mast	aluminium
Spreaders	3x
Keel stepped mast	yes
Mainsail	2003 North Sails
Mainsail cover	yes
Fully battened mainsail	yes
High aspect	2003 North Sails
Genoa III	2003 North Sails
Genoa furler	yes
Genoa cover	yes
Gennaker	2003 North Sails
Backstay adjuster	hydraulic
Boomvang	gasspring
Primary sheet winch	1x Harken 2 speed power ratio 44 electrica, 1x manual
Secondary sheet winch	2x Harken 2 speed power ratio 44
Genoa sheetwinches	2x Harken 2 speed power ratio 44
Spi-pole	aluminium





# JEANNEAU SUN FAST 40





# JEANNEAU SUN FAST 40



# JEANNEAU SUN FAST 40





# JEANNEAU SUN FAST 40



# JEANNEAU SUN FAST 40





# JEANNEAU SUN FAST 40



# JEANNEAU SUN FAST 40





# JEANNEAU SUN FAST 40





# JEANNEAU SUN FAST 40



# JEANNEAU SUN FAST 40

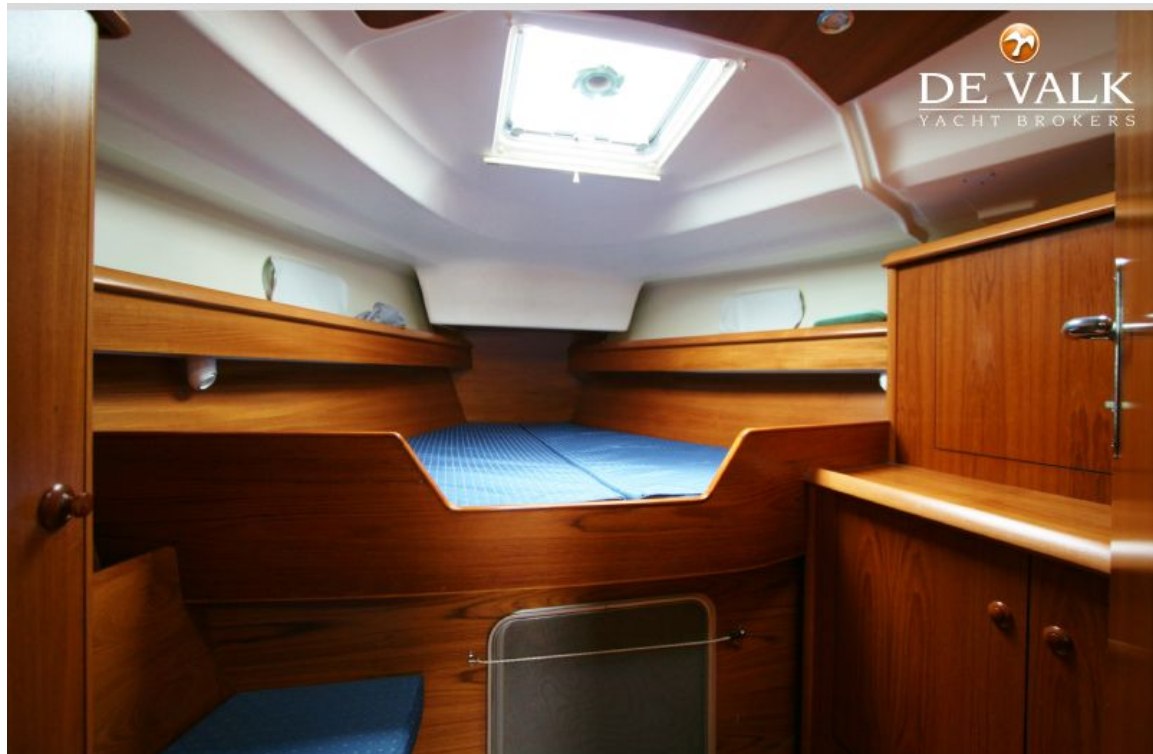




# JEANNEAU SUN FAST 40



# JEANNEAU SUN FAST 40

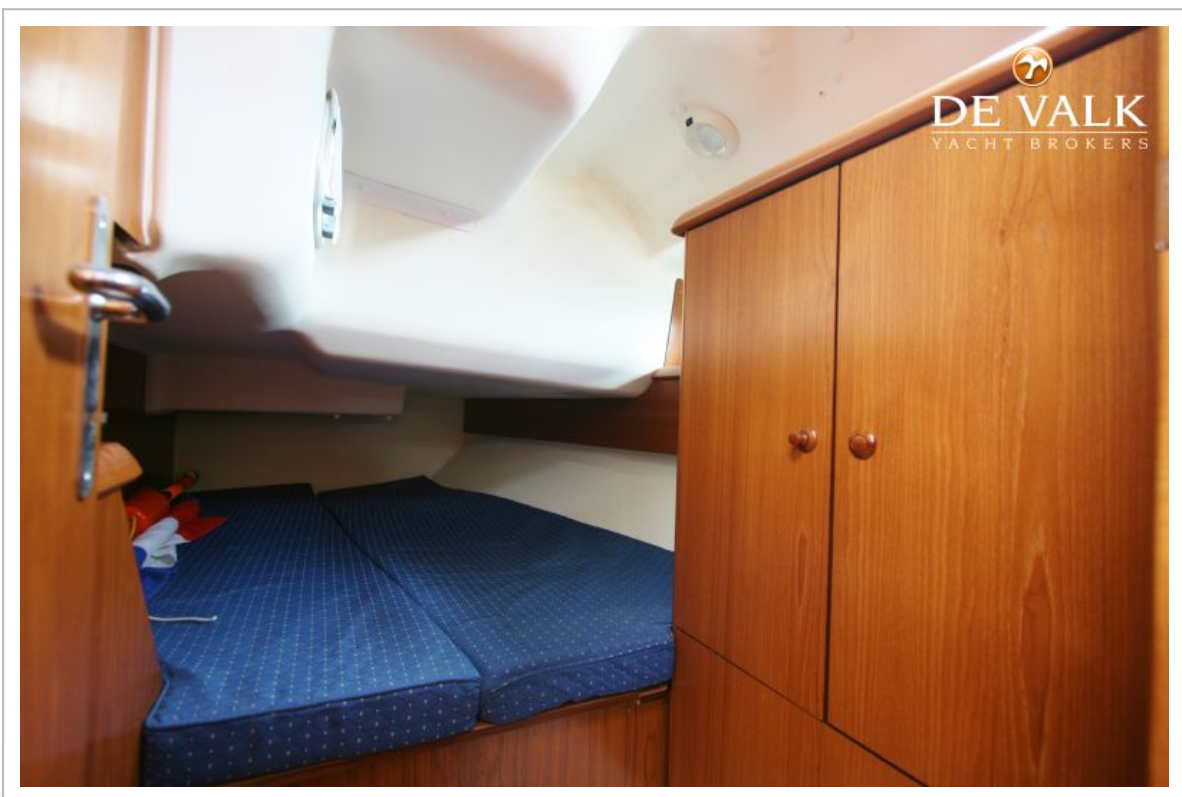




# JEANNEAU SUN FAST 40



# JEANNEAU SUN FAST 40





# JEANNEAU SUN FAST 40





# JEANNEAU SUN FAST 40

