



DE VALK  
YACHT BROKERS



## JEANNEAU SUN ODYSSEY 35



DE VALK  
YACHT BROKERS

# JEANNEAU SUN ODYSSEY 35

## BROKER'S COMMENTS

Nice mid-range example from the famous Sun Odyssey range by Jeanneau. Designer Marc Lombard and Jeanneau have succeeded in creating a well performing family cruising yacht. The 2 cabin layout has ample extra storage space in the cockpit and a more spacious aft cabin and bathroom. Ideal for family and friends. She belongs to her first owner, has been sailed only privately and is inside in very nice condition. Inside nicely fitted teak interior with light colored upholstery creating a nice atmosphere. Comes with Raymarine equipment. The cockpit cover is a good extension of the living space.

*Henk Sijbranda*

## SPECIFICATIONS

<b>Dimensions</b>	10.75 x 3.47 x 0,96 / 2.18 (m)	<b>Builder</b>	Jeanneau
<b>Built</b>	2004	<b>Cabins</b>	2
<b>Material</b>	GRP	<b>Berths</b>	5
<b>Engine(s)</b>	1 x Volvo Penta MD2030-D BT diesel	<b>Hp/Kw</b>	30.00 (hp), 22.05 (kw)
<b>Asking price</b>	sold (VAT )	<b>Lying</b>	at sales office

## CONTACT

<b>Sales office</b>	De Valk Hindeloopen	<b>Telephone</b>	+31 514 52 40 00
<b>Address</b>	Oosterstrand 1 8713 JS Hindeloopen The Netherlands	<b>E-mail</b>	hindeloopen@devalk.nl

## DISCLAIMER

These particulars are given in good faith as supplied but cannot be guaranteed.



# JEANNEAU SUN ODYSSEY 35

## GENERAL

<b>Model</b>	JEANNEAU SUN ODYSSEY 35
<b>Type</b>	sailing yacht
<b>LOA (m)</b>	10,75
<b>LWL (m)</b>	9,74
<b>Beam (m)</b>	3,47
<b>Draft (m)</b>	2,18
<b>Draft min (m)</b>	0,96
<b>Air draft (m)</b>	15,50
<b>Headroom (m)</b>	1,92
<b>Year built</b>	2004
<b>Builder</b>	Jeanneau
<b>Country</b>	France
<b>Designer</b>	Marc Lombard / Jeanneau Design
<b>Displacement (t)</b>	5,9
<b>Ballast (tonnes)</b>	2,1
<b>CE norm</b>	A
<b>Hull material</b>	GRP
<b>Hull colour</b>	white
<b>Hull shape</b>	round-bilged
<b>Keel type</b>	centreboard
<b>Superstructure material</b>	GRP
<b>Rubbing strake</b>	aluminum
<b>Deck material</b>	GRP
<b>Deck finish</b>	anti-slip moulded in
<b>Cockpit deck finish</b>	teak
<b>Window material</b>	polycarbonate
<b>Deckhatch</b>	3x
<b>Portholes</b>	2
<b>Fuel tank (litre)</b>	polyethylene 130
<b>Freshwater tank (litre)</b>	polyethylene 2x total 310



Level indicator (freshwater)	yes
Blackwater tank (litre)	polyethylene 45
Wheel steering	yes
Emergency tiller	yes

## ACCOMMODATION

Cabins	2
Berths	5
Interior	teak
Floor	teak and holly
Open cockpit	yes
Saloon	yes
Headroom saloon (m)	1,92
Heating	diesel ducted hot air Eberspracher
Chart table	yes
Galley	yes
Countertop	plastic
Sink	stainless steel 2x
Cooker	calor gas Eno 2 burner
Oven	Eno
Microwave	Sharp
Fridge	Frigoboat
Hot water system	220V + engine
Water pressure system	electrical
Owners cabin	double bed
Bed length (m)	2,05 x 1,70
Wardrobe	shelves and hanging
Guest cabin 1	double bed
Bed length (m)	1,99 x 1,98
Wardrobe	shelves and hanging
Bathroom	shared



Toilet	shared
Toilet system	manual
Wash basin	in the bathroom
Shower	shared

## MACHINERY

No of engines	1
Make	Volvo Penta
Type	MD2030-D BT
HP	30,00
kW	22,05
Fuel	diesel
Maximum speed (kn)	6,5
Cruising speed (kn)	6
Engine hours	314,4 (4-6-2015)
Engine cooling system	freshwater heat exchanger
Drive	shaft
Engine controls	bowden cable
Gearbox	mechanical
Bowthruster	electric Max Power - retractable
Exhaust	watercooled
Propeller type	fixed
Propeller shaft material	stainless steel
Shaft lubrication	water
Manual bilge pump	yes
Electric bilge pump	yes
Electrical installation	12 / 220 V
Start battery	1x 70Ah
Service battery	1x 70Ah
Battery monitor	yes
Battery charger	yes



Shorepower with cable

## NAVIGATION

Compass	Plastimo - Horizon 135
Depth sounder	Raymarine ST60 Tridata
Log	Raymarine ST60 Tridata
Windset	Raymarine ST60 Wind
Repeater	Raymarine ST60 Graphic
VHF	Ray 54E
Autopilot	Raymarine ST6001 Smartpilot
Rudder angle indicator	Autopilot
Radar	Raymarine
Radar/GPS/plotter	Raymarine C70

## EQUIPMENT

Sprayhood	yes
Cockpit cover	yes
Cockpit table	yes
Bathing platform	yes
Boarding ladder	stainless steel
Transom door	yes
Deck shower	yes
Anchor	CQR Plough
Anchor chain	+ line
Windlass	manual Lofrans
Outboard support	yes
Sea railing	stainless steel
Pushpit	yes
Pulpit	yes
Life raft	container Plastimo Offshore 6
Life raft (pers)	6



<b>Last life raft survey</b>	03-2013 next service 03-2016
<b>Lifebuoy</b>	yes
<b>Fenders</b>	yes
<b>Mooring lines</b>	yes
<b>TV</b>	RefleXion
<b>Radio-cd player</b>	Sony
<b>Speakers in salon</b>	yes

## RIGGING

<b>Rigging</b>	sloop
<b>Standing rigging</b>	wire
<b>Brand mast</b>	Sparcraft
<b>Material mast</b>	aluminium
<b>Spreaders</b>	2x
<b>Mainsail</b>	Elvstrom 26M <sup>2</sup>
<b>Mainsail cover</b>	Lazy Bag + Lazy Jacks
<b>Genoa</b>	Elvstrom 36,30 M <sup>2</sup>
<b>Genoa furler</b>	yes
<b>Reefing System</b>	quick-one-line-reefing
<b>Boomvang</b>	mechanical
<b>Genoa sheetwinches</b>	2x Harken 2speed 40
<b>Halyard winches</b>	2x Harken 2speed 32



# JEANNEAU SUN ODYSSEY 35





# JEANNEAU SUN ODYSSEY 35



# JEANNEAU SUN ODYSSEY 35



# JEANNEAU SUN ODYSSEY 35



# JEANNEAU SUN ODYSSEY 35



# JEANNEAU SUN ODYSSEY 35



# JEANNEAU SUN ODYSSEY 35



# JEANNEAU SUN ODYSSEY 35







# JEANNEAU SUN ODYSSEY 35



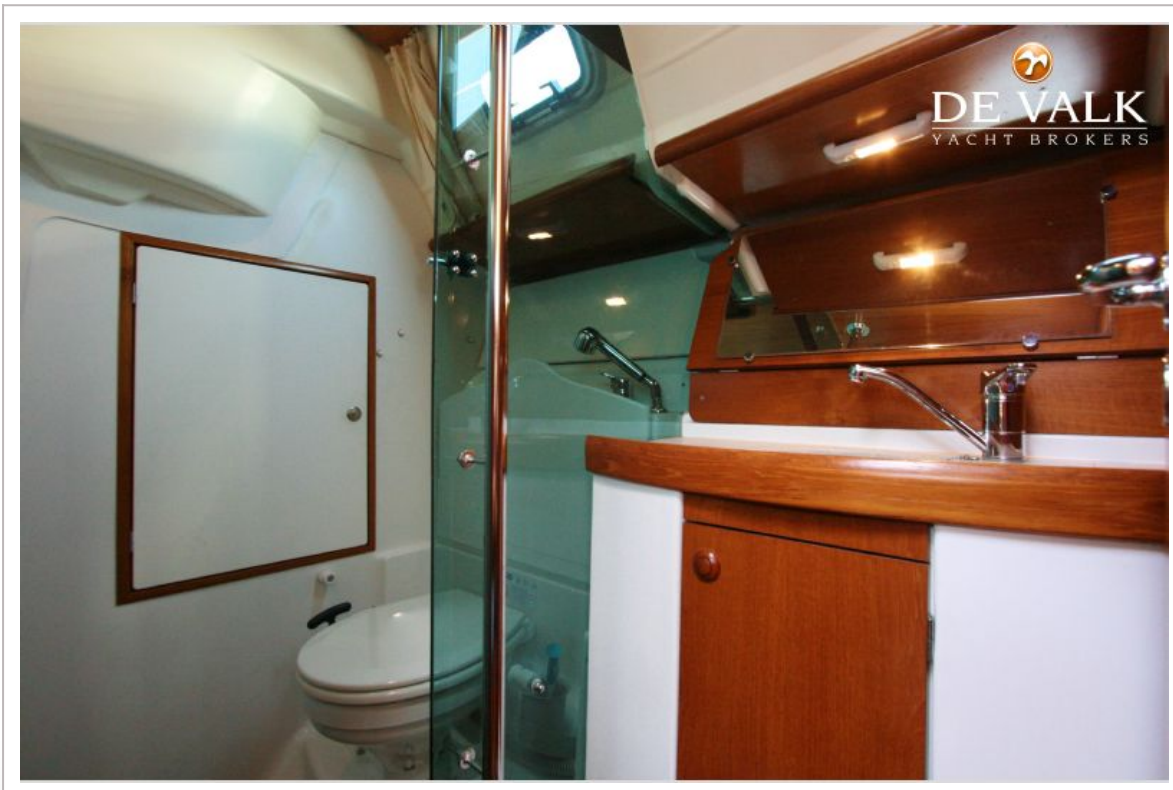
# JEANNEAU SUN ODYSSEY 35



# JEANNEAU SUN ODYSSEY 35



# JEANNEAU SUN ODYSSEY 35



# JEANNEAU SUN ODYSSEY 35

