



DE VALK  
YACHT BROKERS



HANSE 401



DE VALK  
YACHT BROKERS

# HANSE 401

## BROKER'S COMMENTS

This Hanse 401 designed by Judel & Vrolijk, offers an excellent balance of performance and comfort. She has been with her second owner since 2003 and has been well maintained, with many upgrades over the years. Improvements include among others sails, navigation equipment, standing rigging, and underwater hull. With her practical 4-cabin layout, good sailing characteristics, and solid build quality, this Hanse 401 is a reliable and comfortable cruiser, ready for new adventures. Located in Bruinisse and available for viewing by appointment.

*Joris van de Rijt*

## SPECIFICATIONS

<b>Dimensions</b>	12.52 x 4.05 x 1.69 (m)	<b>Builder</b>	Hanse Greifswald GmbH
<b>Built</b>	1999	<b>Cabins</b>	4
<b>Material</b>	GRP	<b>Berths</b>	8
<b>Engine(s)</b>	1 x Volvo Penta MD2040 diesel	<b>Hp/Kw</b>	40.00 (hp), 29.44 (kw)
<b>Asking price</b>	€ 79.000 (VAT Paid)	<b>Lying</b>	elsewhere / Not at sales office

## CONTACT

<b>Sales office</b>	De Valk Sint Annaland B.V.	<b>Telephone</b>	+31 166 601 000
<b>Address</b>	Koelhuisweg 4 4697 RM Sint Annaland NL	<b>E-mail</b>	sintannaland@devalk.nl

## DISCLAIMER

These particulars are given in good faith as supplied but cannot be guaranteed.



## GENERAL

<b>Model</b>	HANSE 401
<b>Type</b>	sailing yacht
<b>LOA (m)</b>	12,52
<b>LWL (m)</b>	10,50
<b>Beam (m)</b>	4,05
<b>Draft (m)</b>	1,69
<b>Air draft (m)</b>	19,50
<b>Headroom (m)</b>	1,95
<b>Year built</b>	1999
<b>Builder</b>	Hanse Greifswald GmbH
<b>Country</b>	Germany
<b>Designer</b>	Judel & Vrolijk Design
<b>Displacement (t)</b>	8,2
<b>Ballast (tonnes)</b>	cast iron and lead
<b>CE norm</b>	A
<b>Hull material</b>	GRP
<b>Hull colour</b>	white
<b>Hull shape</b>	round-bilged
<b>Keel type</b>	fin keel
<b>Superstructure material</b>	GRP
<b>Rubbing strake</b>	Synthetic teak + stainless steel strip (new 2022)
<b>Deck material</b>	GRP
<b>Deck finish</b>	TBS non-skid profile mats (painted 2026)
<b>Superstructure deck finish</b>	non-skid moulded in
<b>Cockpit deck finish</b>	synthetic teak (new 2021)
<b>Antifouling (year)</b>	2025
<b>Dorades</b>	4 x
<b>Window frame</b>	aluminium
<b>Window material</b>	perspex
<b>Deckhatch</b>	2 x



<b>Fuel tank (litre)</b>	polyethylene 90
<b>Level indicator (fuel tank)</b>	yes
<b>Freshwater tank (litre)</b>	polyethylene 240
<b>Level indicator (freshwater)</b>	yes
<b>Blackwater tank (litre)</b>	yes
<b>Blackwater tank extraction</b>	deck extraction + uw line
<b>Wheel steering</b>	(New leather on steering wheel 2025)
<b>Emergency tiller</b>	yes
<b>More info on hull</b>	Underwater body + keel new primer and antifouling 2021
<b>Extra info</b>	Hull lenght 11,98 m

## ACCOMMODATION

<b>Cabins</b>	4
<b>Berths</b>	8
<b>Floor</b>	teak and holly
<b>Saloon</b>	yes
<b>Headroom saloon (m)</b>	1,95
<b>Heating</b>	diesel ducted hot air
<b>Chart table</b>	yes
<b>Aft Cabin</b>	2 x
<b>Dinette</b>	yes
<b>Galley</b>	yes
<b>Countertop</b>	plastic (2004)
<b>Sink</b>	stainless steel
<b>Cooker</b>	calor gas 2 burner
<b>Oven</b>	yes
<b>Fridge</b>	Toploader in countertop
<b>Hot water system</b>	220V + engine Isotherm (2019)
<b>Water pressure system</b>	electrical
<b>Owners cabin</b>	double bed (portside aft)
<b>Bed length (m)</b>	2,10 x 1,25



<b>Wardrobe</b>	hanging and shelves
<b>Bathroom</b>	shared
<b>Toilet</b>	shared
<b>Toilet system</b>	manual
<b>Wash basin</b>	in the bathroom
<b>Shower</b>	shared
<b>Guest cabin 1</b>	double bed (starboardside aft)
<b>Bed length (m)</b>	2,10 x 1,25
<b>Wardrobe</b>	hanging and shelves
<b>Guest cabin 2</b>	bunk bed (portside front)
<b>Bed length (m)</b>	1,95 x 0,90
<b>Wardrobe</b>	hanging/drawers/shelves
<b>Guest cabin 3</b>	bunk bed (starboardside front)
<b>Bed length (m)</b>	1,95 x 0,90
<b>Wardrobe</b>	hanging/drawers/shelves

## MACHINERY

<b>No of engines</b>	1
<b>Make</b>	Volvo Penta
<b>Type</b>	MD2040
<b>HP</b>	40
<b>kW</b>	29.44
<b>Fuel</b>	diesel
<b>Year installed</b>	1999
<b>Year of overhaul</b>	2015
<b>Engine cooling system</b>	freshwater heat exchanger
<b>Drive</b>	sail-drive
<b>Saildrive seal</b>	New 2021
<b>Engine controls</b>	bowden cable
<b>Propeller type</b>	folding Volvo Penta
<b>Propeller blades</b>	2



<b>Manual bilge pump</b>	yes
<b>Electric bilge pump</b>	yes
<b>Electrical installation</b>	12/220V
<b>Start battery</b>	(2025)
<b>Service battery</b>	2 x (2025)
<b>Battery monitor</b>	yes
<b>Battery charger</b>	Mastervolt
<b>Shorepower</b>	with cable
<b>Extra info</b>	All through hull fittings new 2021
<b>Extra info</b>	New engine mounts 2021
<b>Extra info</b>	All gas hoses new 2021

## NAVIGATION

<b>Compass</b>	Plastimo on helmposition
<b>Depth sounder</b>	Raymarine i70 (new 2023)
<b>Log</b>	Raymarine i70 (new 2023)
<b>Windset</b>	Raymarine i70 (new 2023)
<b>VHF</b>	Shipmate RS8300
<b>Autopilot</b>	Raymarine (new 2023)
<b>Plotter</b>	Raymarine Axiom 9+ (new 2023)
<b>Electronic chart(s)</b>	yes
<b>AIS transponder</b>	Raymarine AIS 700 (new 2023)
<b>Navigation lights</b>	yes

## EQUIPMENT

<b>Sprayhood</b>	New 2019 (windows replaced 2025)
<b>Bathing platform</b>	yes
<b>Boarding ladder</b>	steel
<b>Deck shower</b>	On the stern (hot + cold)
<b>Anchor</b>	CQR Plough
<b>Anchor chain</b>	60 mtr 8 mm



Windlass	manual Lofrans Royal
Capstan	On windlass
Outboard support	yes
Sea railing	wire
Grab rail (superstructure)	teak
Pushpit	yes
Pulpit	yes
Life raft (pers)	container Plastimo cruiser 8 (next survey due: 06-2026)
Radar reflector	yes
Fenders	yes
Mooring lines	yes
Radio-cd player	MR logic
Speakers in salon	yes
Clock - barometer	yes
Fire extinguisher	1 x (needs survey/to be replaced)

## RIGGING

Rigging	fractional
Standing rigging	wire (all rigging new 2021)
Brand mast	Selden (2004)
Material mast	aluminium
Mainsail cover	yes
Fully battened mainsail	Quantum CDX pro (new 2023)
Genoa	Quantum DCX M (new 2023)
Genoa I	yes
Genoa furler	yes
Stormjib	yes
Self tacking jib installation	With Jib
Reefing System	slabreefing
Backstay adjuster	tackle
Boomvang	gasspring



<b>Genoa sheetwinches</b>	2 x Harken 46ST
<b>Halyard winches</b>	2 x Harken 40ST
<b>Winchcovers</b>	yes
<b>Spi-pole</b>	aluminium
<b>Extra info</b>	Halyards main and genoa Dynema (new 2021)
<b>Extra info</b>	All halyard stoppers new 2024



# HANSE 401



# HANSE 401



# HANSE 401



# HANSE 401



# HANSE 401



# HANSE 401



# HANSE 401



# HANSE 401



# HANSE 401



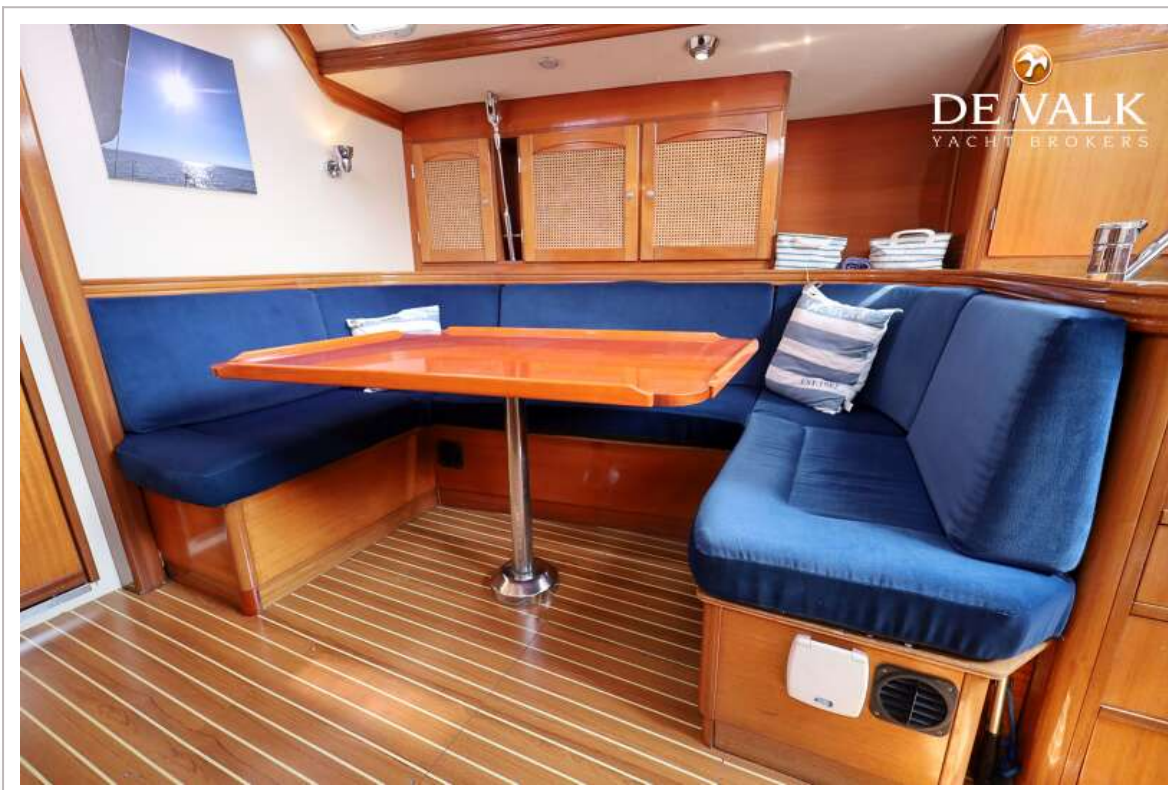
# HANSE 401



# HANSE 401



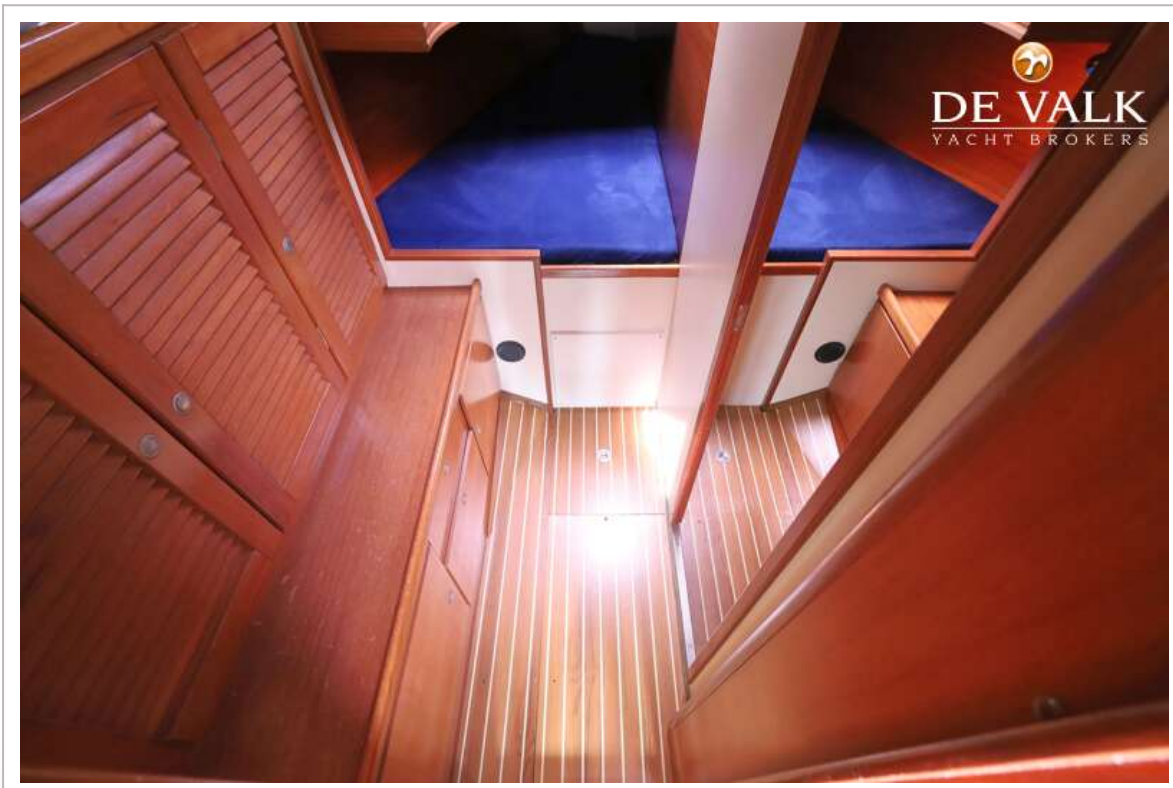
# HANSE 401



# HANSE 401



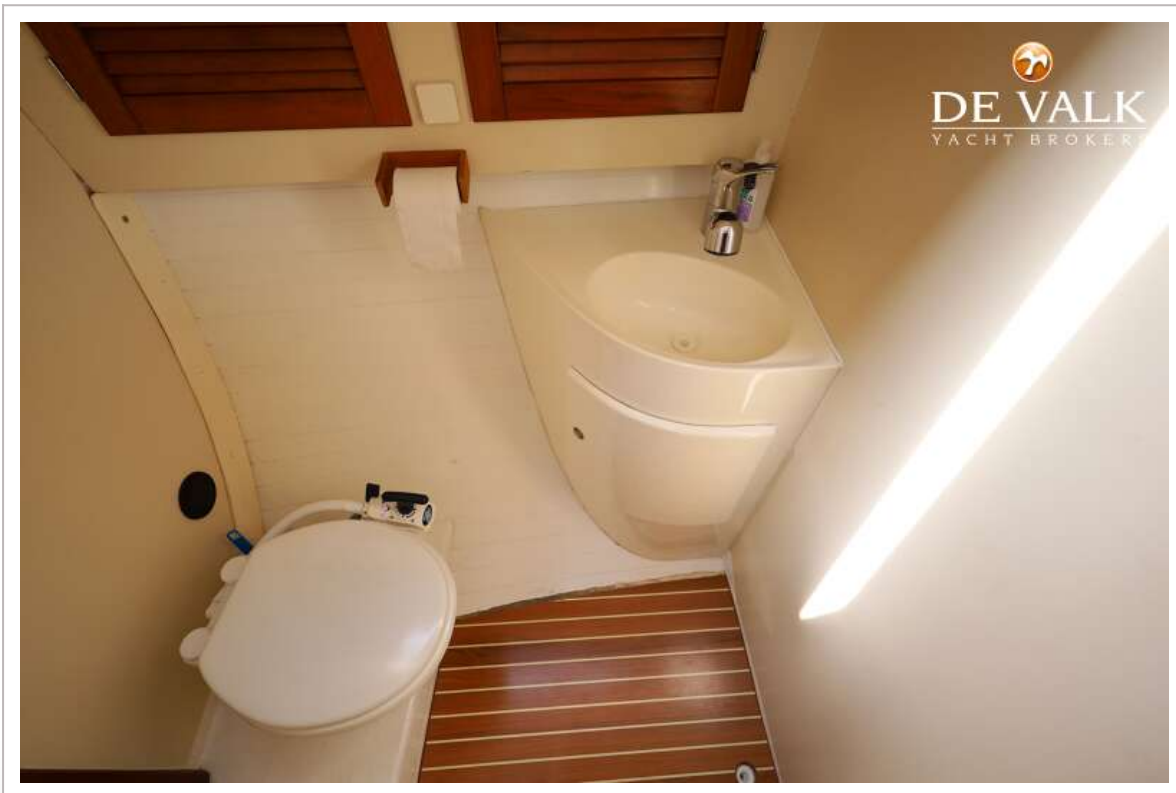
# HANSE 401



# HANSE 401



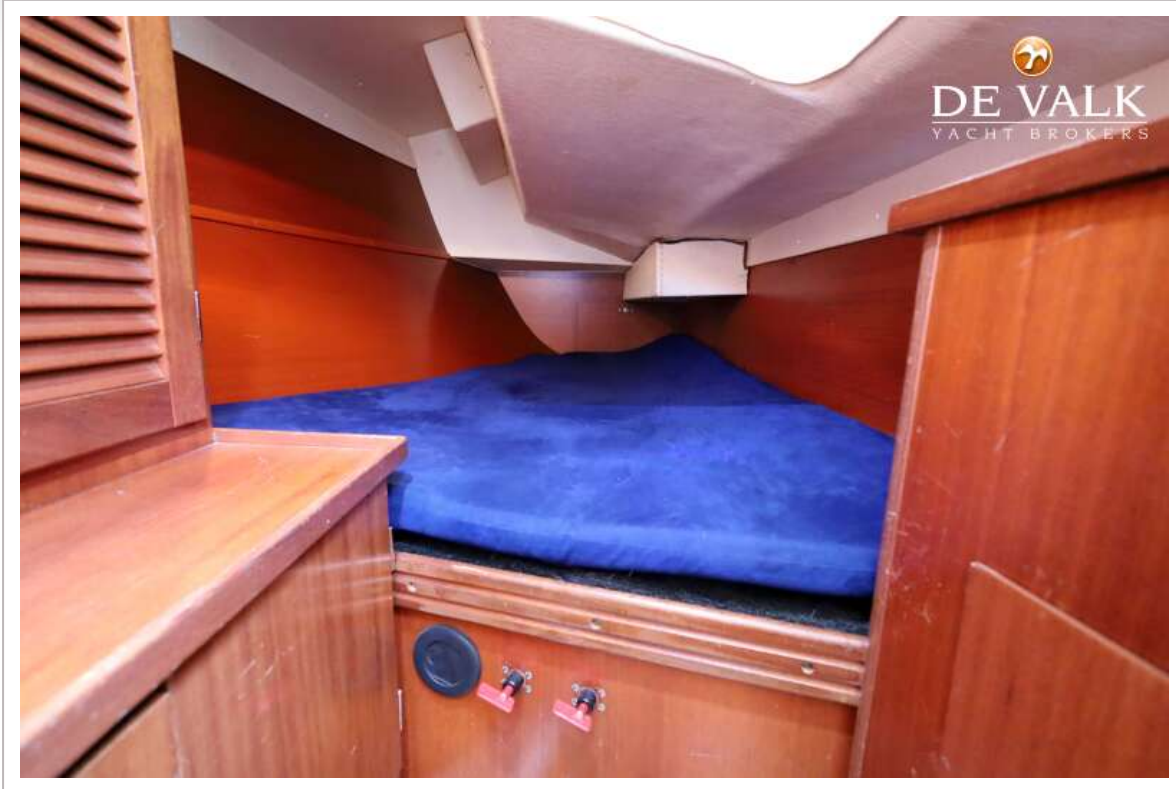
# HANSE 401



# HANSE 401



# HANSE 401



# HANSE 401

