



## NORDSHIP 35

  
**DE VALK**  
YACHT BROKERS

# NORDSHIP 35

## BROKER'S COMMENTS

The goal of the designer of the Nordship 35 was to create a boat of high quality and with good sailing performance. And the goal has been reached with the Nordship 35, a good cruiser which sails well, is comfortable and both GRP work and wood details are of high quality. The centre cockpit is deep, has good seating comfort and is comfortable for cruising. The view is excellent, even with the spray hood up. First owner. Pictures of the building period available.

*Reinier van der Wolf*

## SPECIFICATIONS

<b>Dimensions</b>	10.50 x 3.30 x 1.60 (m)	<b>Builder</b>	Buchwald Yachtvaerft ApS, Lunderskov
<b>Built</b>	1996	<b>Cabins</b>	2
<b>Material</b>	GRP	<b>Berths</b>	5
<b>Engine(s)</b>	1 x Volvo Penta MD2030B 868777 diesel	<b>Hp/Kw</b>	28.00 (hp), 20.58 (kw)
<b>Asking price</b>	sold (VAT )	<b>Lying</b>	at sales office

## CONTACT

<b>Sales office</b>	De Valk Monnickendam B.V.	<b>Telephone</b>	+31 (0)299 65 63 50
<b>Address</b>	Hoogedijk 6 1145 PM Katwoude NL	<b>E-mail</b>	monnickendam@devalk.nl

## DISCLAIMER

These particulars are given in good faith as supplied but cannot be guaranteed.



## GENERAL

Model	NORDSHIP 35
Type	sailing yacht
LOA (m)	10,50
LWL (m)	8,20
Beam (m)	3,30
Draft (m)	1,60
Air draft (m)	14,00
Headroom (m)	1,80
Year built	1996
Builder	Buchwald Yachtvaerft ApS, Lunderskov
Country	Denmark
Designer	Elvstrom & Kjaeralf / Buchwald
Displacement (t)	5,35
Ballast (tonnes)	lead 2,2
Hull material	GRP
Hull colour	white
Hull shape	round-bilged
Keel type	fin keel
Superstructure material	GRP
Rubbing strake	wood
Deck material	GRP
Deck finish	teak
Superstructure deck finish	anti-slip moulded in
Cockpit deck finish	teak
Antifouling (year)	2015
Window frame	aluminium
Fuel tank (litre)	stainless steel 150
Level indicator (fuel tank)	yes
Freshwater tank (litre)	stainless steel 150
Level indicator (freshwater)	yes



Blackwater tank (litre)	yes
Wheel steering	mechanical
More info on paintwork	Blue striping (2010)
Extra info	Extra windows in saloon.

## ACCOMMODATION

Cabins	2
Berths	5
Interior	teak
Floor	teak and holly + carpet
Saloon	yes
Heating	diesel ducted hot air Eberspaecher
Chart table	yes
Dinette	yes
Dinette to convert into berth	yes
Galley	yes
Countertop	plastic
Sink	stainless steel
Cooker	calor gas
Oven	yes
Fridge	yes
Hot water system	yes
Water pressure system	electrical
Crockery	yes
Owners cabin	double bed
Wardrobe	shelves and hanging
Guest cabin 1	v-bed
Wardrobe	shelves and hanging
Toilet	yes
Toilet system	manual
Wash basin	yes



Shower	yes
Extra info	Two gas bottles, gas inspection 2013, gas hose replaced in 2013.

## MACHINERY

No of engines	1
Make	Volvo Penta
Type	MD2030B 868777
HP	28,00
kW	20,58
Fuel	diesel
Year installed	1996
Maximum speed (kn)	6,5
Cruising speed (kn)	6
Engine cooling system	freshwater heat exchanger
Drive	sail-drive
Gearbox	mechanical
Propeller type	folding
Propeller blades	2
Manual bilge pump	yes
Electrical installation	12V/220V
Start battery	1x (2010)
Service battery	1x MV 12V/225 Ah AGM (2010)
Battery monitor	Mastervolt Changemaster 12/50-3 (2010)
Battery charger	yes
Shorepower	with cable
Extra info	Saildrive cuff 2011.

## NAVIGATION

Compass	yes
Depth sounder	Autohelm



Log	yes
Windset	Autohelm
VHF	Ray240 (2011) (Atis)
Autopilot	Autohelm 4000
GPS	Garmin GPS120

## EQUIPMENT

Fixed windscreen	yes
Sprayhood	UK de Vries (2015)
Cockpit cover	UK de Vries (2015)
Cockpit cushions	yes
Cockpit table	Teak
Boarding ladder	stainless steel + Teak
Anchor	yes
Anchor chain	yes
Sea railing	stainless steel
Pushpit	S/S
Pulpit	S/S
Safety harness	yes
Radar reflector	yes
Fenders	yes
Mooring lines	yes
Spare parts	yes
Tools	yes
Radio-cd player	Sony
Speakers in salon	Pioneer (2x)
Clock - barometer	yes
Fire extinguisher	yes
Latest extinguisher survey	must be inspected

## RIGGING



<b>Rigging</b>	sloop
<b>Standing rigging</b>	wire
<b>Material mast</b>	aluminium
<b>Spreaders</b>	2x 2
<b>Mainsail</b>	UK De Vries (25m <sup>2</sup> - 2007) + original main sail as spare
<b>Mainsail cover</b>	(2009)
<b>Jib</b>	UK De Vries
<b>Genoa</b>	UK De Vries (29.3m <sup>2</sup> - 2007) + original genoa as spare
<b>Genoa furler</b>	Profurl Classic
<b>Genoa cover</b>	yes
<b>Gennaker</b>	UK De Vries
<b>Reefing System</b>	Layz Jacks
<b>Backstay adjuster</b>	mechanical
<b>Boomvang</b>	yes
<b>Genoa sheetwinches</b>	2x Andersen
<b>Halyard winches</b>	2x Andersen (cockpit/mast)
<b>Gennaker pole</b>	aluminium





# NORDSHIP 35

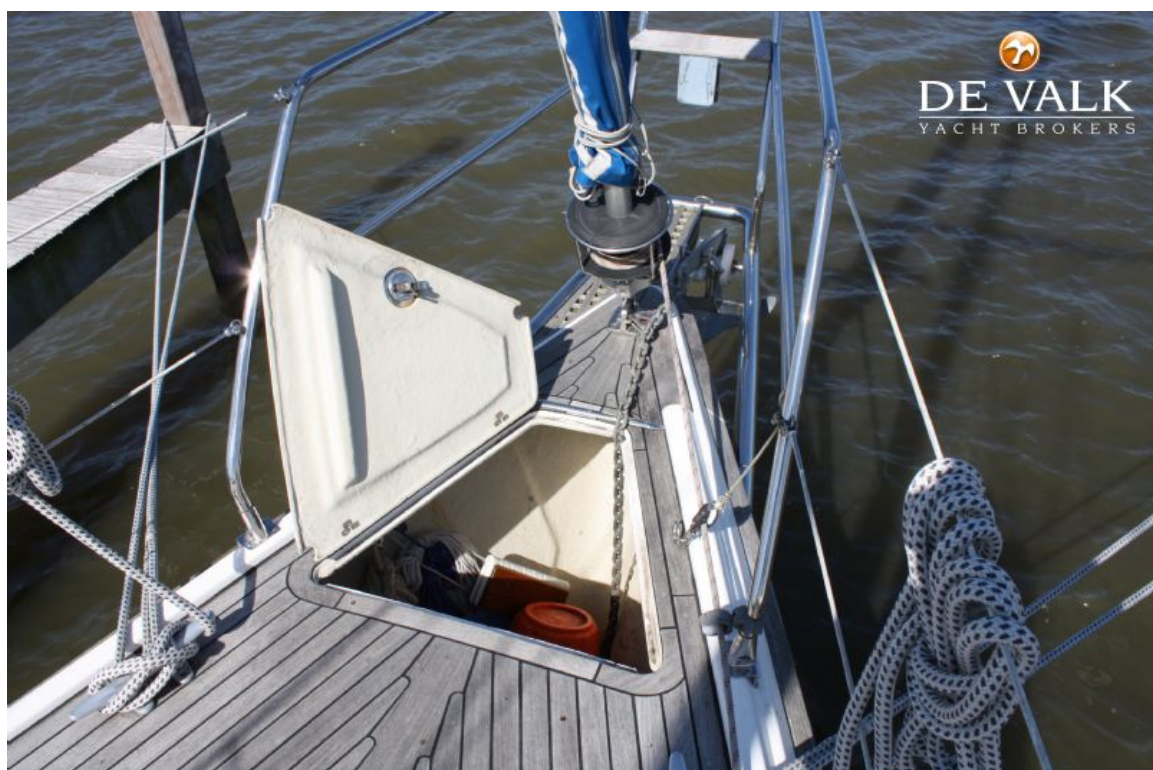




# NORDSHIP 35



# NORDSHIP 35





# NORDSHIP 35





# NORDSHIP 35



# NORDSHIP 35





# NORDSHIP 35



# NORDSHIP 35





# NORDSHIP 35

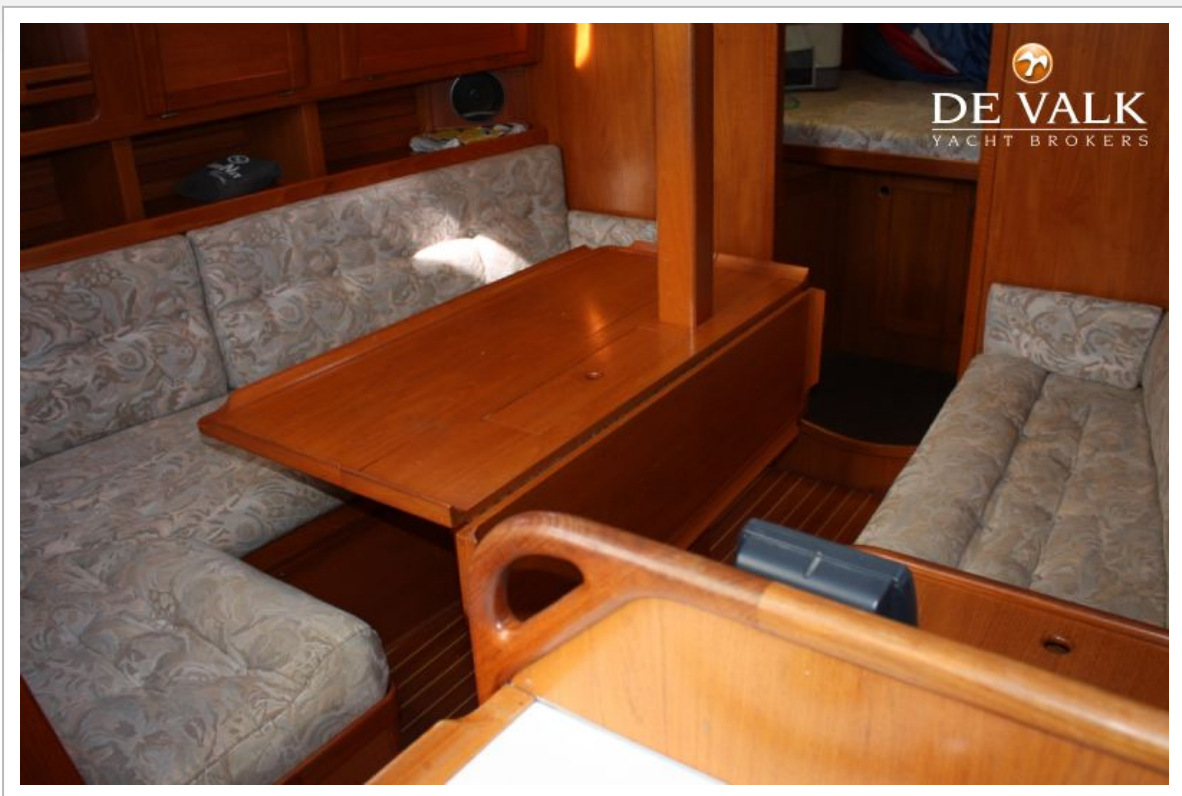




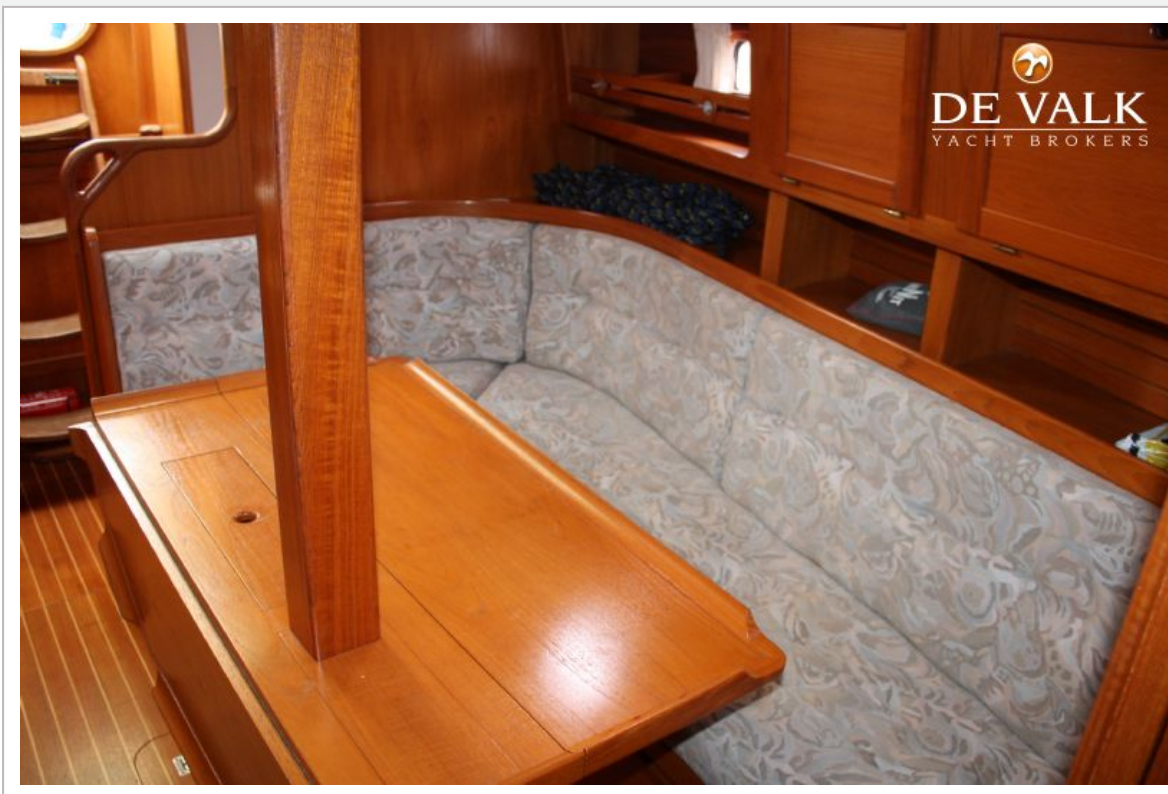
# NORDSHIP 35



# NORDSHIP 35





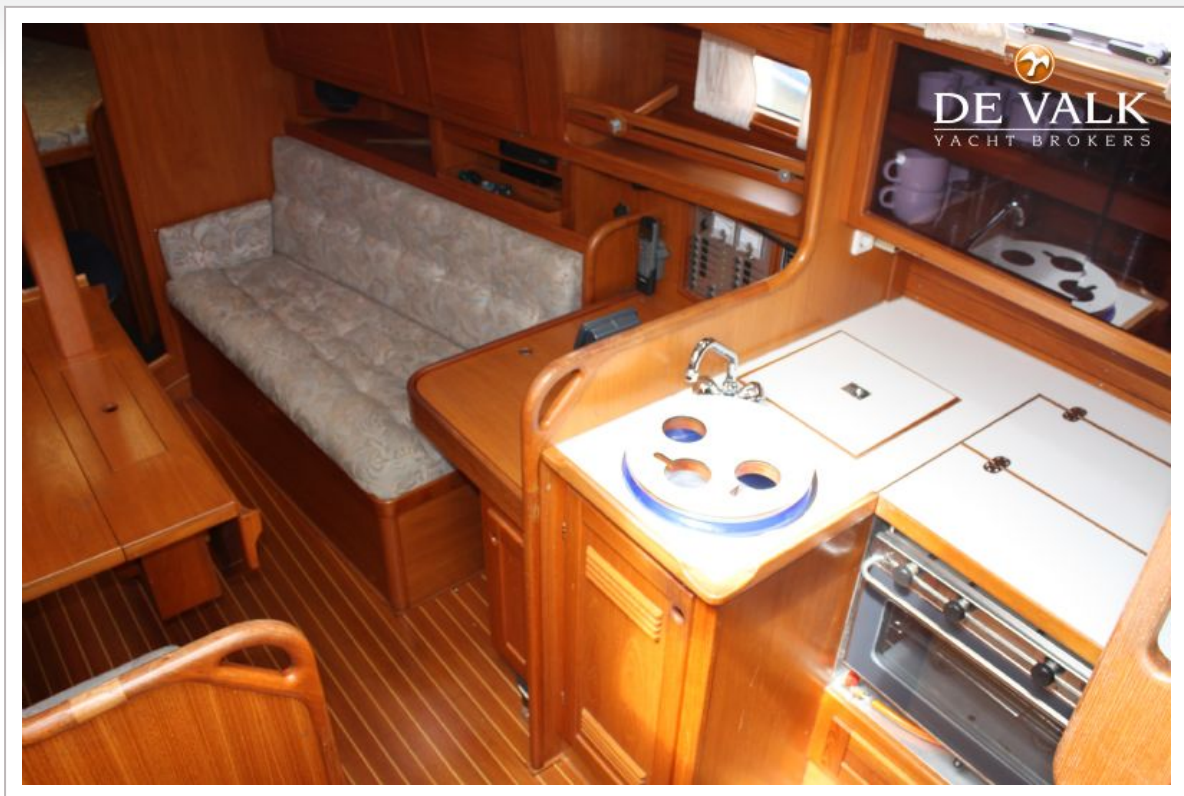


# NORDSHIP 35

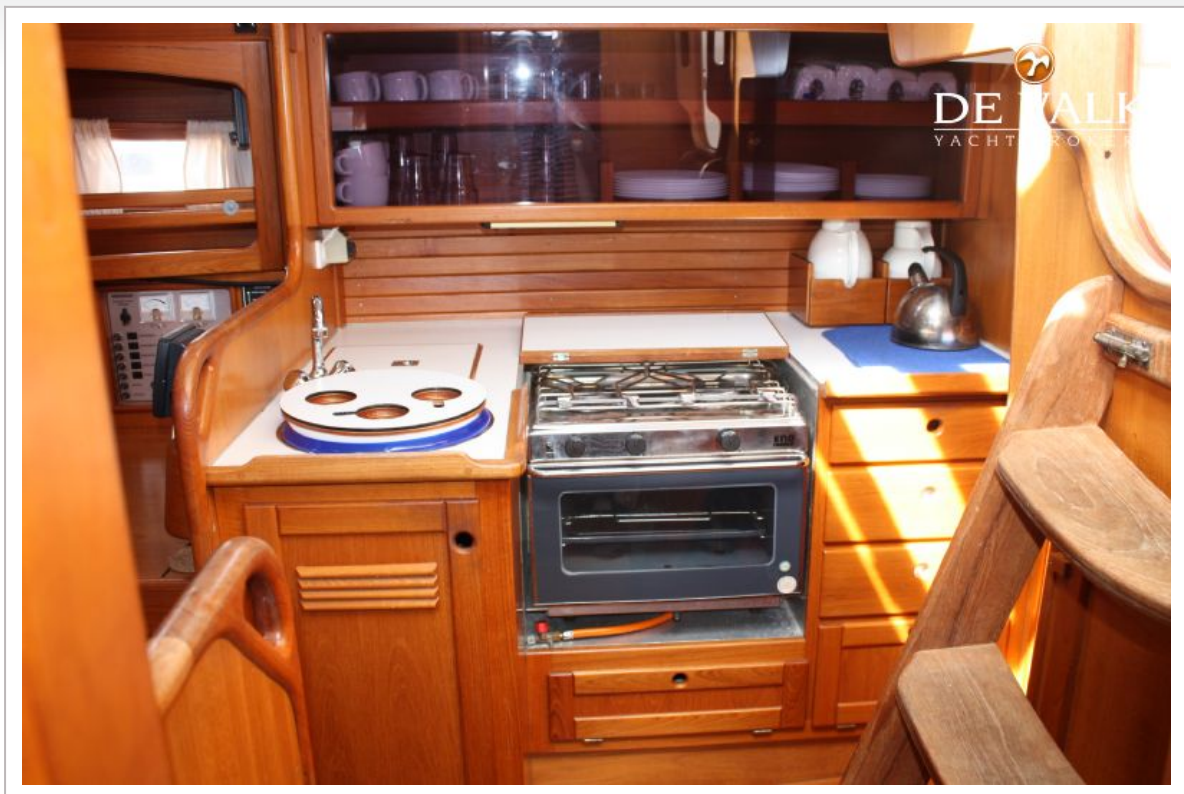




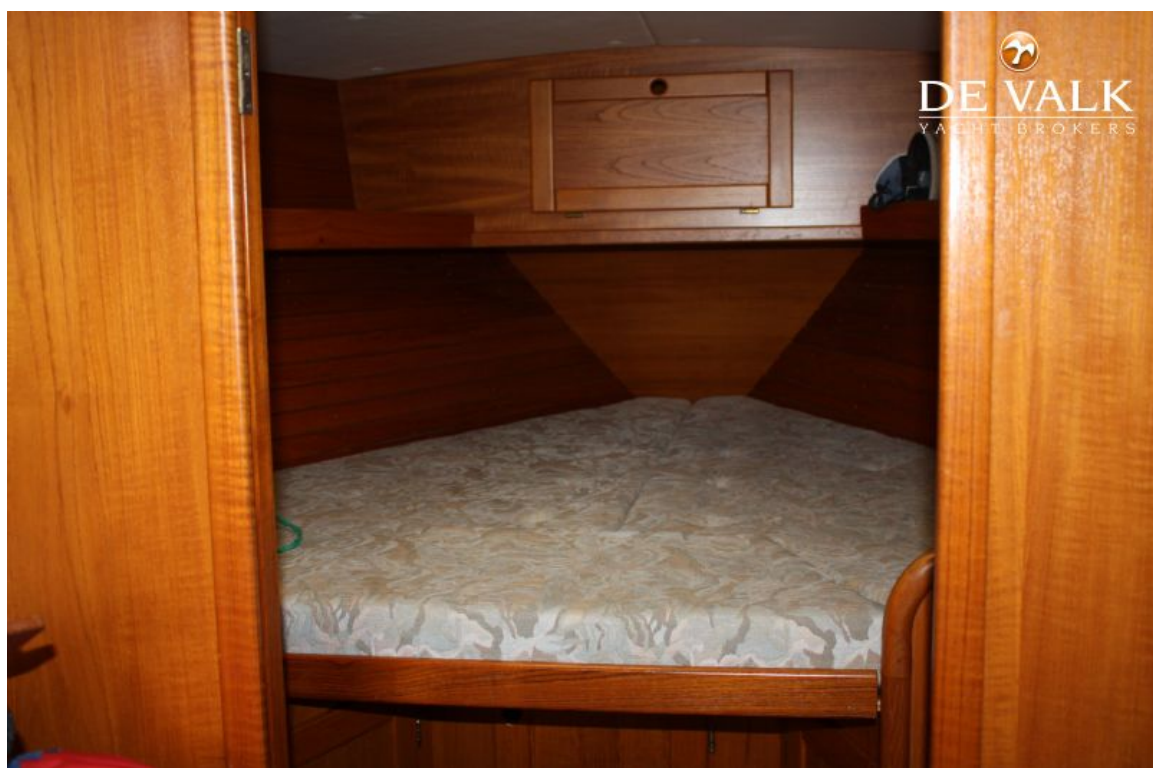
# NORDSHIP 35

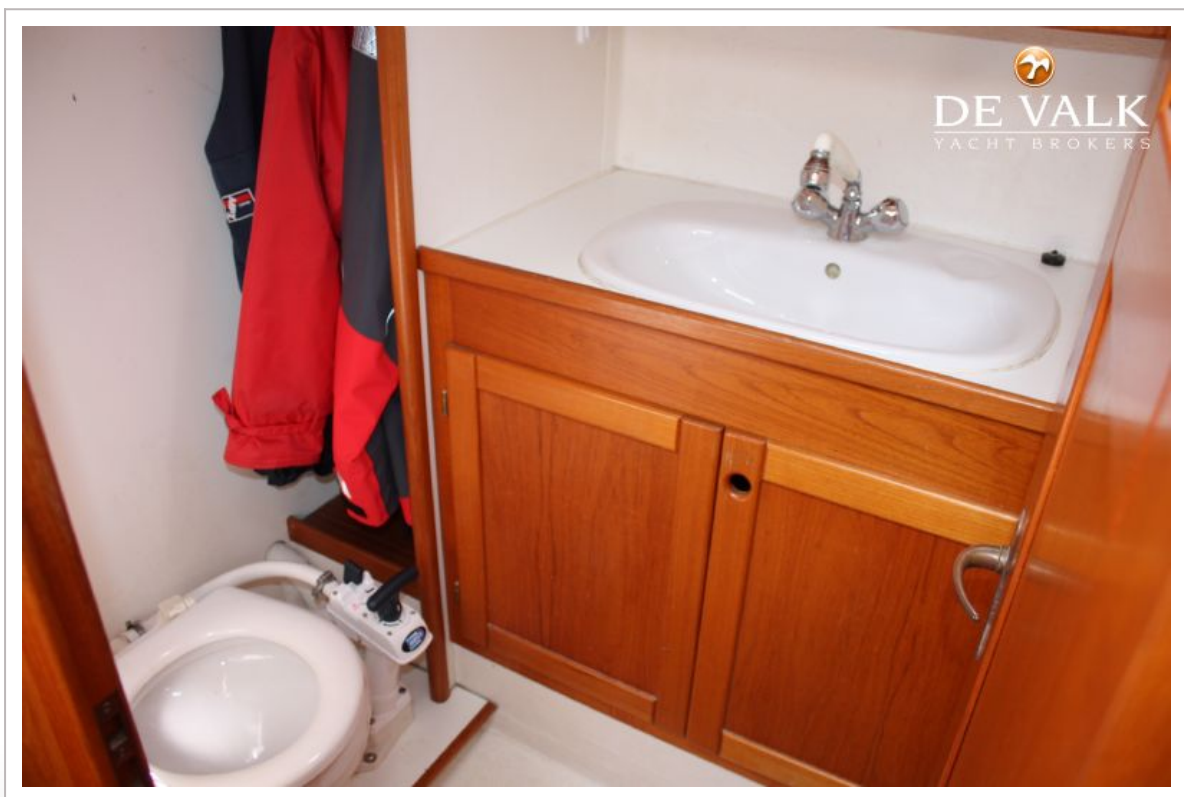


# NORDSHIP 35

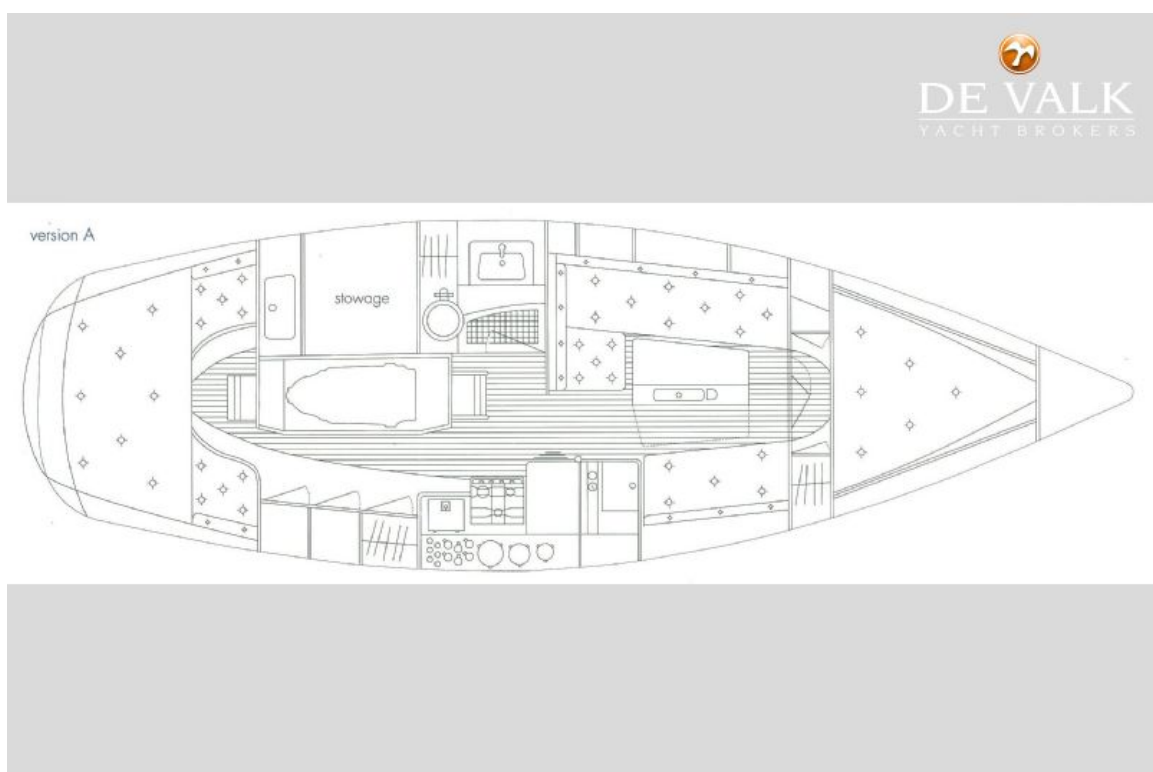
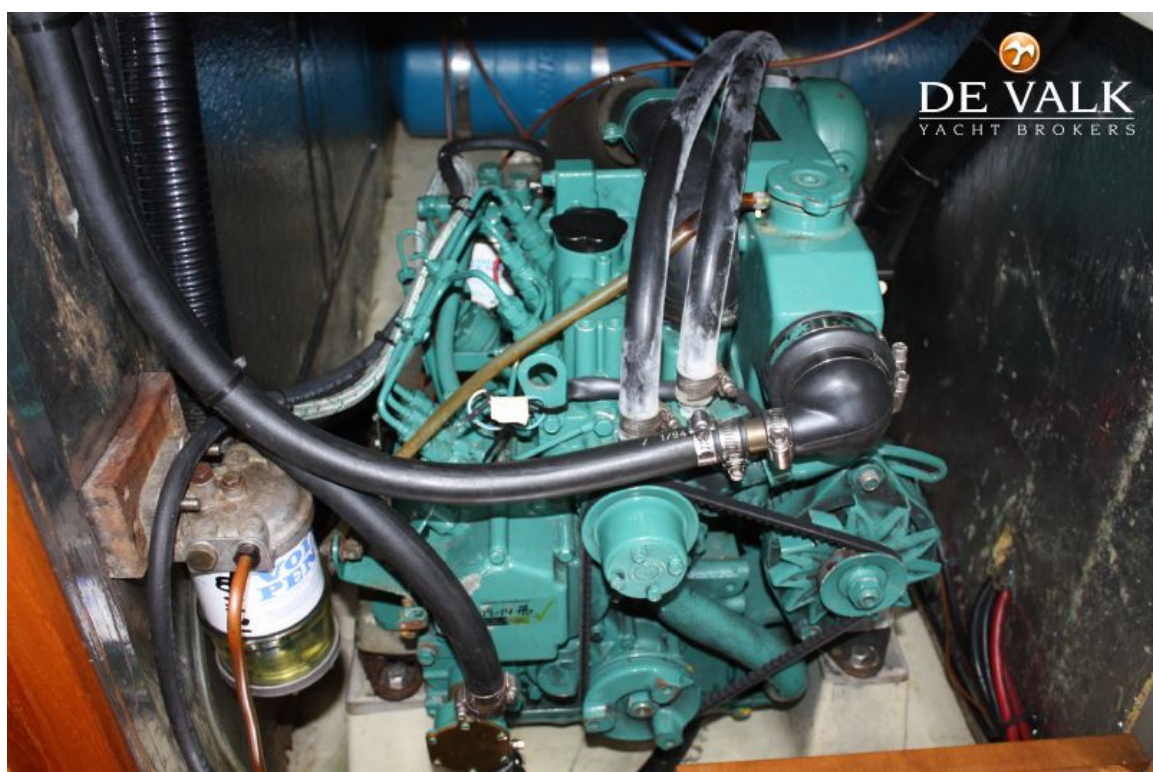








# NORDSHIP 35





# NORDSHIP 35

  
**DE VALK**  
YACHT BROKERS

