



DE VALK
YACHT BROKERS



HANSE 400



DE VALK
YACHT BROKERS

BROKERAGE | CHARTER | BERTHS | FINANCE | INSURANCE | YACHT MANAGEMENT

BROKER'S COMMENTS

The Hanse 400 is a stylish performance sailing yacht with luxurious accommodation and all the comforts below deck. The master cabin is located in the front and the 2 guest cabins in the aft, separate bathroom with shower and toilet. This Hanse 400 is a perfect family cruiser with all the comfort you need. This is a well equipped owners version with a retractable bow thruster, electric winch and windlass, gennaker and Simrad equipment on both steering positions. Now ready to be inspected 7 days a week in our sales harbor in Hindeloopen.

Henk Sijbranda

SPECIFICATIONS

Dimensions	12.10 x 4.04 x 2.05 (m)	Builder	Hanse Yachts GmbH
Built	2010	Cabins	3
Material	GRP	Berths	6
Engine(s)	1 x Yanmar 3JH4E diesel	Hp/Kw	40.00 (hp), 29.44 (kw)
Asking price	sold (VAT)	Lying	at sales office

CONTACT

Sales office	De Valk Hindeloopen B.V.	Telephone	+31 514 52 40 00
Address	Oosterstrand 1 8713 JS Hindeloopen NL	E-mail	hindeloopen@devalk.nl

DISCLAIMER

These particulars are given in good faith as supplied but cannot be guaranteed.



GENERAL

Model	HANSE 400
Type	sailing yacht
LOA (m)	12,10
LWL (m)	10,80
Beam (m)	4,04
Draft (m)	2,05
Air draft (m)	20,00
Headroom (m)	1,98
Year built	2010
Launched	2011
Builder	Hanse Yachts GmbH
Country	Germany
Designer	Judel / Vrolijk & Co
Displacement (t)	8,4
Ballast (tonnes)	2,68
CE norm	A
Hull material	GRP
Hull colour	white
Hull shape	round-bilged
Keel type	fin keel
Superstructure material	GRP
Rubbing strake	stainless steel
Deck material	GRP
Deck finish	non-skid moulded in
Superstructure deck finish	non-skid moulded in
Cockpit deck finish	teak
Antifouling (year)	2020
Window material	polycarbonate
Deckhatch	5x flush
Fuel tank (litre)	Approx. 140 ltr.



Level indicator (fuel tank)	yes
Freshwater tank (litre)	polyethylene Approx. 325 ltr.
Level indicator (freshwater)	yes
Blackwater tank (litre)	polyethylene
Blackwater tank extraction	deck extraction + uw line
Wheel steering	mechanical 2x Jefa steering system
Emergency tiller	yes

ACCOMMODATION

Cabins	3
Berths	6
Interior	mahogany
Floor	wood
Open cockpit	yes
Saloon	yes
Headroom saloon (m)	1.98 mtr.
Heating	diesel ducted hot air Eberspächer Airtronic D4
Chart table	yes
Aft Cabin	2x
Galley	yes
Countertop	corian - DuPont
Sink	stainless steel Double sink
Cooker	calor gas 2 burner
Oven	In cooker
Fridge	Isotherm
Hot water system	220V + engine Isotemp boiler
Water pressure system	electrical
Owners cabin	French bed Front cabin - Neptune mattress
Bed length (m)	2,15 mtr.
Wardrobe	hanging and shelves
Guest cabin 1	double bed Aft cabin



Bed length (m)	> 2 mtr.
Wardrobe	hanging and shelves
Guest cabin 2	double bed
Bed length (m)	> 2 mtr.
Wardrobe	hanging and shelves
Bathroom	shared
Toilet	Jabsco
Toilet system	manual
Wash basin	
Shower	

MACHINERY

No of engines	1
Make	Yanmar
Type	3JH4E
HP	40
kW	29,44
Fuel	diesel
Maximum speed (kn)	7,5
Cruising speed (kn)	6
Engine hours	550
Engine cooling system	freshwater heat exchanger
Drive	sail-drive
Engine controls	bowden cable
Gearbox	mechanical
Bowthruster	electric RMC Marine - Retractable
Exhaust	watercooled
Propeller type	folding
Propeller blades	3
Manual bilge pump	yes
Electric bilge pump	yes



Electrical installation	12 / 220 Volt
Start battery	12V - 70Ah
Service battery	2x AMG 12V - 165Ah
Battery charger	Sterling Pro Charge
Shorepower	with cable

NAVIGATION

Compass	Plastimo Contest 130
Multi control display	3x Simrad IS20
Windset	Simrad IS20
VHF	Lowrance LVR-880
Autopilot	Simrad AP24
Plotter/GPS	Simrad NX40
Electronic chart(s)	yes
Navigation lights	yes

EQUIPMENT

Sprayhood	yes
Cockpit table	yes
Bathing platform	yes
Boarding ladder	stainless steel
Deck shower	yes
Anchor	Delta
Anchor chain	yes
Windlass	electrical Lewmar
Sea railing	wire - stainless steel
Grab rail (superstructure)	stainless steel
Railing side opening gates	yes
Pushpit	yes
Pulpit	yes
Radar reflector	yes



Fenders	yes
Mooring lines	yes
Speakers in salon	yes

RIGGING

Rigging	sloop
Standing rigging	wire
Brand mast	Sparcraft
Material mast	aluminium
Spreaders	2 pair
Mainsail	yes
Mainsail cover	yes
Fully battened mainsail	yes
High aspect	2020
Genoa furler	Furlex 300 TD
Gennaker	2011, hardly used
Self tacking jib installation	yes
Reefing System	quick-one-line-reefing
Backstay adjuster	mechanical
Boomvang	gasspring
Genoa sheetwinches	2x Lewmar 46
Multifunctional winches	2x Lewmar 40 (one electric)



HANSE 400



HANSE 400



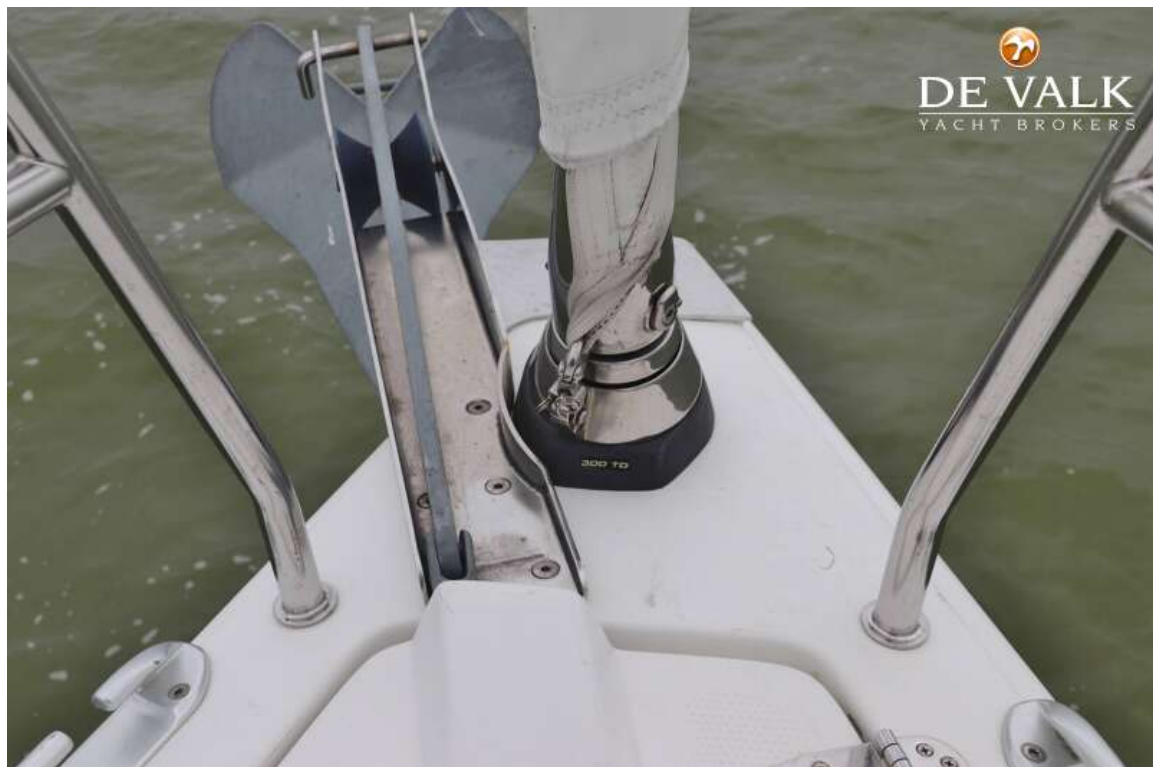
HANSE 400



HANSE 400



HANSE 400



HANSE 400



HANSE 400



HANSE 400



HANSE 400



HANSE 400



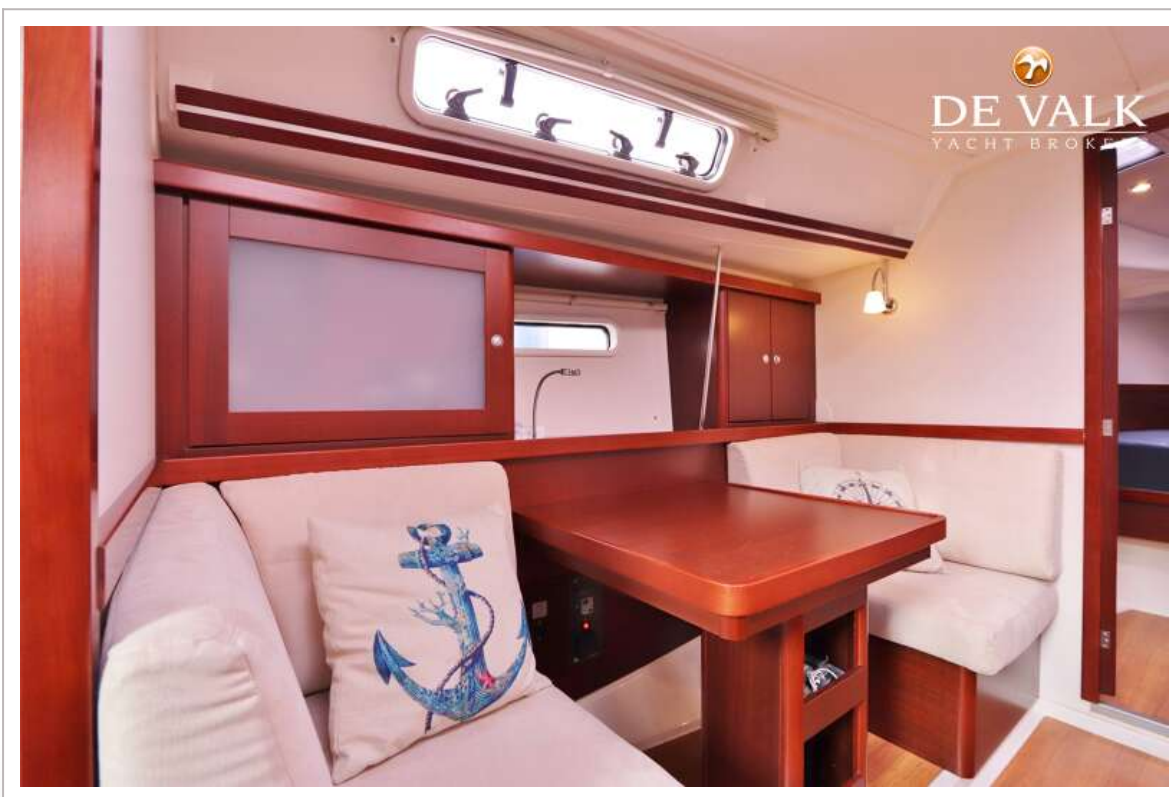
HANSE 400



HANSE 400



HANSE 400



HANSE 400



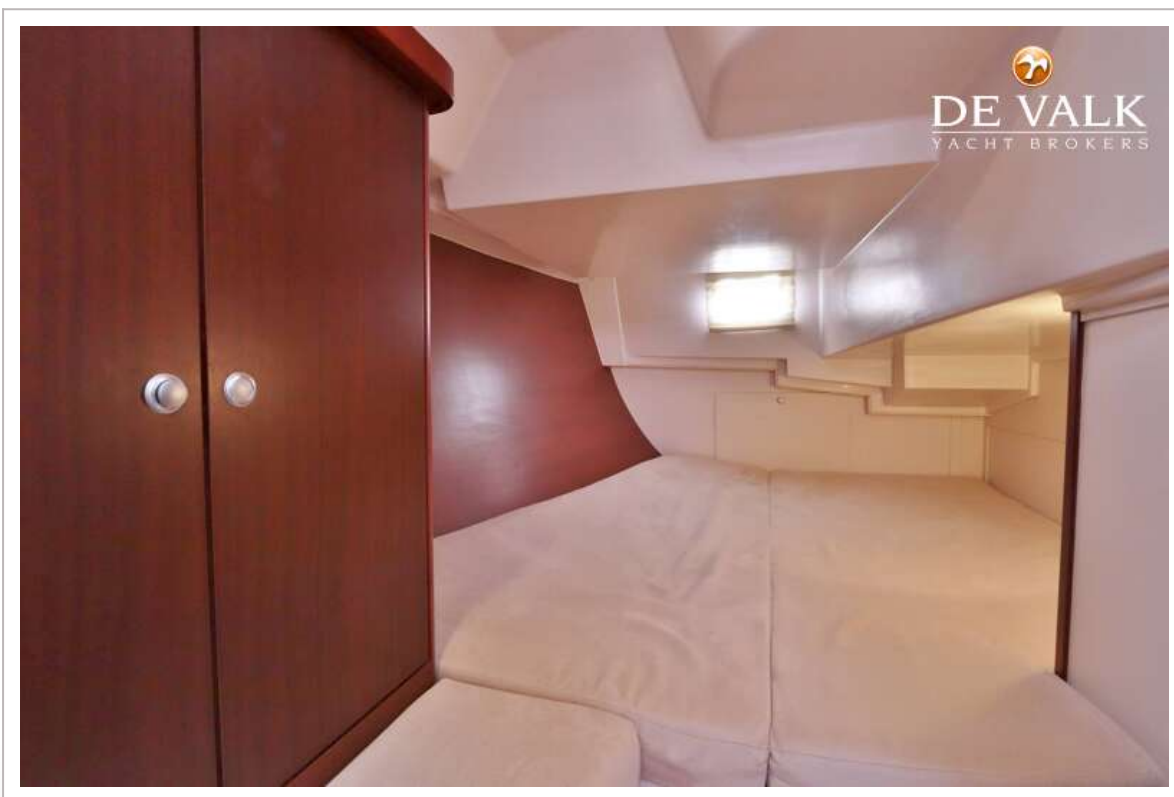
HANSE 400



HANSE 400



HANSE 400



HANSE 400



