



DE VALK
YACHT BROKERS



SUNBEAM 42 CC



DE VALK
YACHT BROKERS

SUNBEAM 42 CC

BROKER'S COMMENTS

Sunbeam 42 CC; Designed by J&J and build by Schochl Yachtbau Austria, this centre cockpit cruising yacht has a lot to go for; good sail performance and sea keeping, comfortable, safe and build quality. With her length over 12 meters the interior space is more than enough for longer comfortable stays on board. Very well equipped (bow thruster, electric winch, airco, electric gangway, etc) and very easy to handle sails and rigging layout with electric winch and stoway mast. Lying Hindeloopen - NL

Henk Sijbranda

SPECIFICATIONS

Dimensions	12.60 x 4.40 x 2.00 (m)	Builder	Schöchl Yachtbau
Built	2003	Cabins	2
Material	GRP	Berths	4
Engine(s)	1 x Yanmar 4JH3-TE diesel	Hp/Kw	75.00 (hp), 55.13 (kw)
Asking price	sold (VAT)	Lying	contact Hindeloopen

CONTACT

Sales office	De Valk Hindeloopen B.V.	Telephone	+31 514 52 40 00
Address	Oosterstrand 1 8713 JS Hindeloopen NL	E-mail	hindeloopen@devalk.nl

DISCLAIMER

These particulars are given in good faith as supplied but cannot be guaranteed.



GENERAL

Model	SUNBEAM 42 CC
Type	sailing yacht
LOA (m)	12,60
LWL (m)	11,20
Beam (m)	4,40
Draft (m)	2,00
Headroom (m)	1,93
Year built	2003
Builder	Schöchl Yachtbau
Country	Austria
Designer	J & J
Displacement (t)	12,6
Ballast (tonnes)	4
CE norm	A
Hull material	GRP
Hull colour	white
Hull shape	round-bilged
Keel type	bulb keel
Superstructure material	GRP
Rubbing strake	Aluminium frame with rubber
Deck material	GRP
Deck finish	teak
Superstructure deck finish	anti-slip moulded in
Cockpit deck finish	teak
Window frame	aluminium
Window material	tempered glass
Deckhatch	3x
Fuel tank (litre)	stainless steel 300
Level indicator (fuel tank)	yes
Freshwater tank (litre)	stainless steel 570



Level indicator (freshwater)	yes
Blackwater tank (litre)	polyethylene 50 & 60l
Blackwater tank extraction	yes
Wheel steering	mechanical WhitLock
Emergency tiller	yes

ACCOMMODATION

Cabins	2
Berths	4
Interior	mahogany
Floor	teak
Open cockpit	yes
Deck saloon	yes
Saloon	yes
Headroom saloon (m)	1,92
Heating	diesel ducted hot air Webasto 5000
Air-conditioning	Klima Coolmax - CMC47KCZ
Chart table	yes
Aft Cabin	yes
Dinette	yes
Galley	yes
Countertop	corian
Sink	stainless steel 2x
Cooker	electric Ceran® Schott
Fridge	Isotherm 3201-k & Coolmatic 48L
Hot water system	220V + engine Isotherm 22l
Water pressure system	electrical
Manual and/or foot pump	yes
Owners cabin	French bed
Bed length (m)	2
Wardrobe	hanging/drawers/shelves



Bathroom	en suite
Toilet	yes
Toilet system	electric
Wash basin	yes
Shower	yes
Guest cabin 1	double bed
Bed length (m)	1,95
Wardrobe	hanging/drawers/shelves
Bathroom	shared
Toilet	yes
Toilet system	manual
Wash basin	yes
Shower	yes

MACHINERY

No of engines	1
Make	Yanmar
Type	4JH3-TE
HP	75,00
kW	55,13
Fuel	diesel
Year installed	2003
Maximum speed (kn)	7,5
Cruising speed (kn)	6,5
Engine hours	1112 (4-2-2016)
Engine cooling system	freshwater heat exchanger
Drive	shaft
Engine controls	bowden cable
Gearbox	mechanical
Bowthruster	electric Vetus 80 Kgf
Exhaust	watercooled



Propeller type	folding
Propeller blades	3
Propeller shaft material	stainless steel Ø35m
Shaft lubrication	water
Manual bilge pump	yes
Electric bilge pump	yes
Bilge alarm	yes
Electrical installation	12 / 220V
Generator	wet exhaust Paguro 6000
Start battery	MK Gel Battery 8G31DT (12V 97AH)
Service battery	2x Banner Dry Bull 12V, 196Ah / DB 205 (defect)
Bowthruster battery	2x Optima 50Ah + Ctek charger 12v/5a
Windlass battery	The same as bowthruster
Battery charger	Quick SBC Professional 700 - 12v/65A
Diode battery combiners	yes
Shorepower	with cable

NAVIGATION

Compass	Suunto
Depth sounder	Raymarine ST60
Log	Raymarine ST60
Windset	Raymarine ST60
VHF	Raymarine Ray 230E
Autopilot	2x Raymarine ST6000+
Radar/GPS/plotter	Raymarine RC530 & Raymarine RL70C

EQUIPMENT

Fixed windscreen	yes
Sprayhood	yes
Sprayhood with grab rail	yes
Cockpit table	yes



Bathing platform	yes
Boarding ladder	stainless steel
Gangway	Hydraulic gangway Almar Reku
Deck shower	yes
Anchor	Rocna
Anchor chain	yes
Windlass	electrical Lofrans 1200Watt 12 volt
Capstan	electrical Lewmar
Sea railing	yes
Grab rail (superstructure)	stainless steel
Railing side opening gates	yes
Pushpit	yes
Pulpit	yes
Fenders	yes
Mooring lines	yes
Radio-cd player	Alpine
Speakers in salon	yes
Clock - barometer	yes

RIGGING

Rigging	sloop
Standing rigging	wire
Brand mast	Seldén
Material mast	aluminium
Spreaders	3
Mainsail	37m ²
Stoway mast	yes
Genoa	61,7m ²
Genoa furler	Furlex 300S
Reefing System	main in-mast furling
Boomvang	gasspring Rodkicker



SUNBEAM 42 CC

Primary sheet winch

2x Harken 32 - 2speed

Genoa sheetwinches

2x Harken 53 - 2speed

Halyard winches

1x Harken 40 - 2speed - Electric

Spi-pole

aluminium



SUNBEAM 42 CC



SUNBEAM 42 CC



SUNBEAM 42 CC



SUNBEAM 42 CC



SUNBEAM 42 CC



SUNBEAM 42 CC



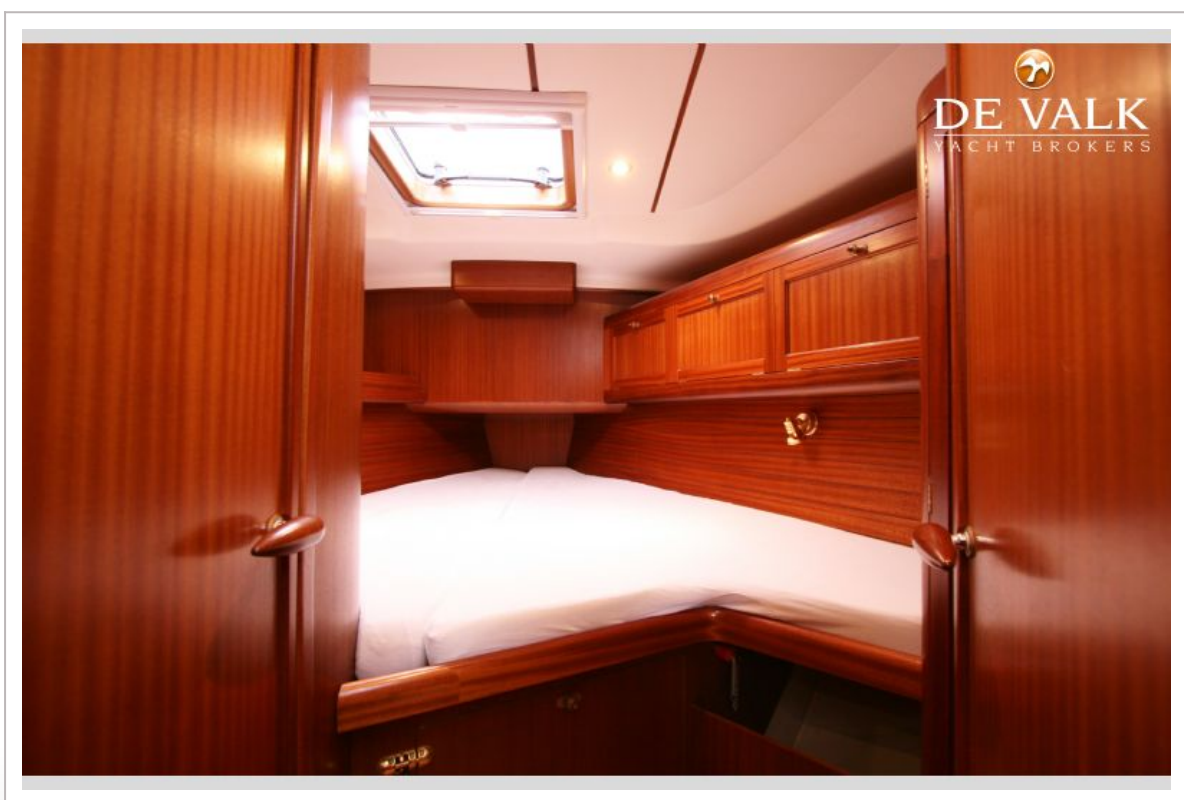
SUNBEAM 42 CC



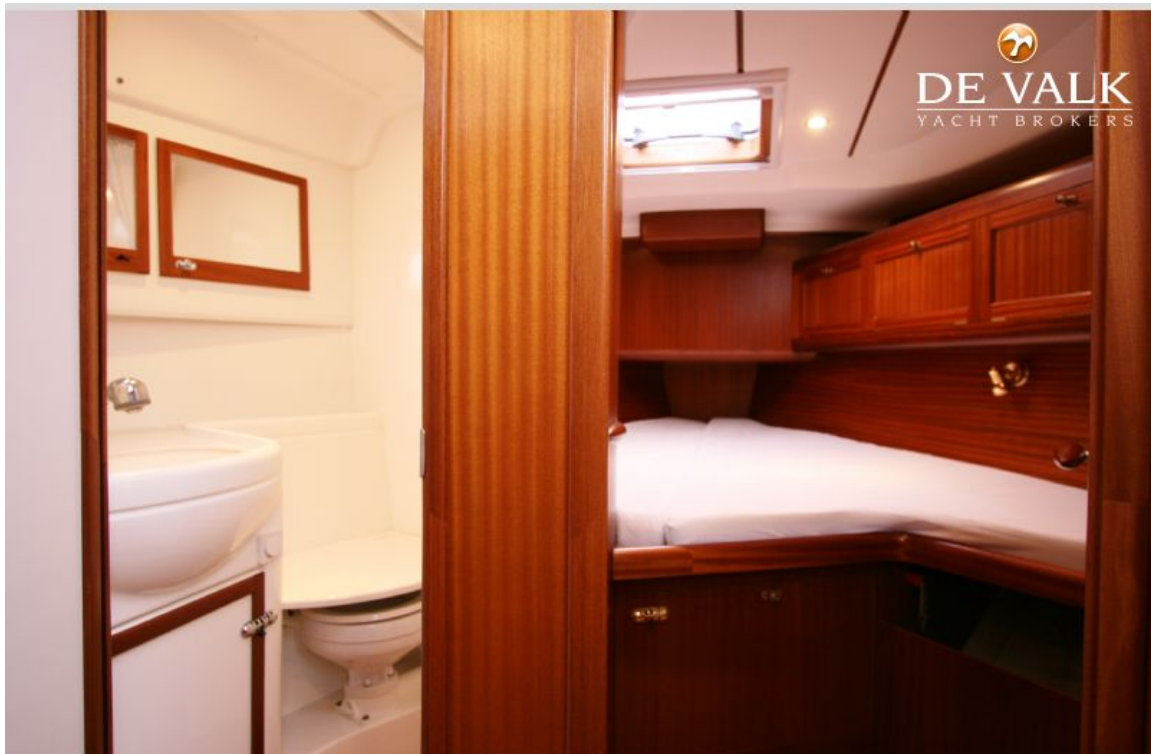
SUNBEAM 42 CC



SUNBEAM 42 CC



SUNBEAM 42 CC



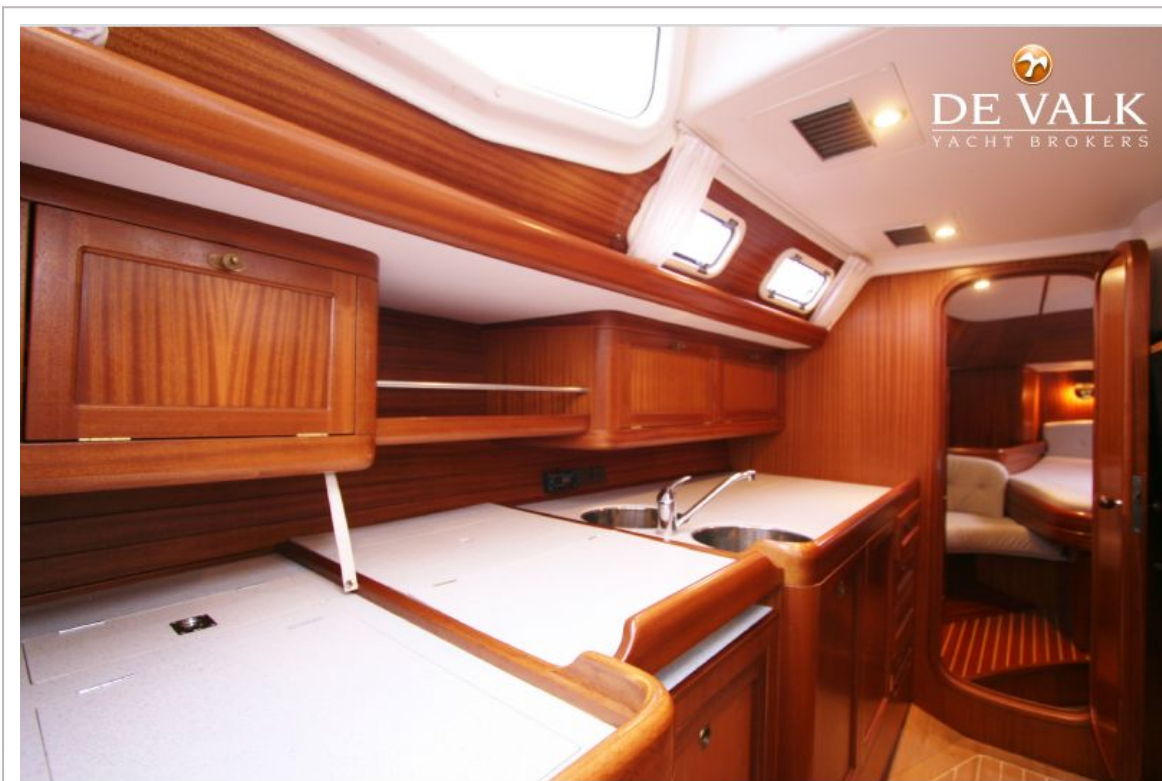
SUNBEAM 42 CC



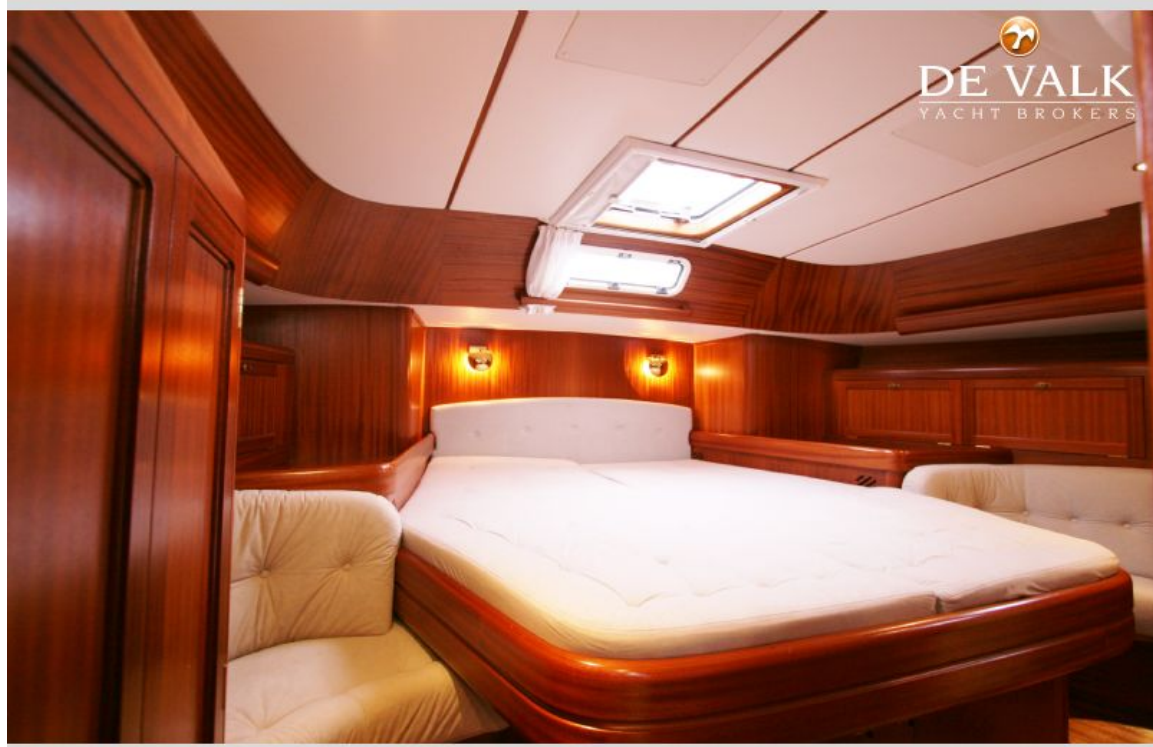
SUNBEAM 42 CC



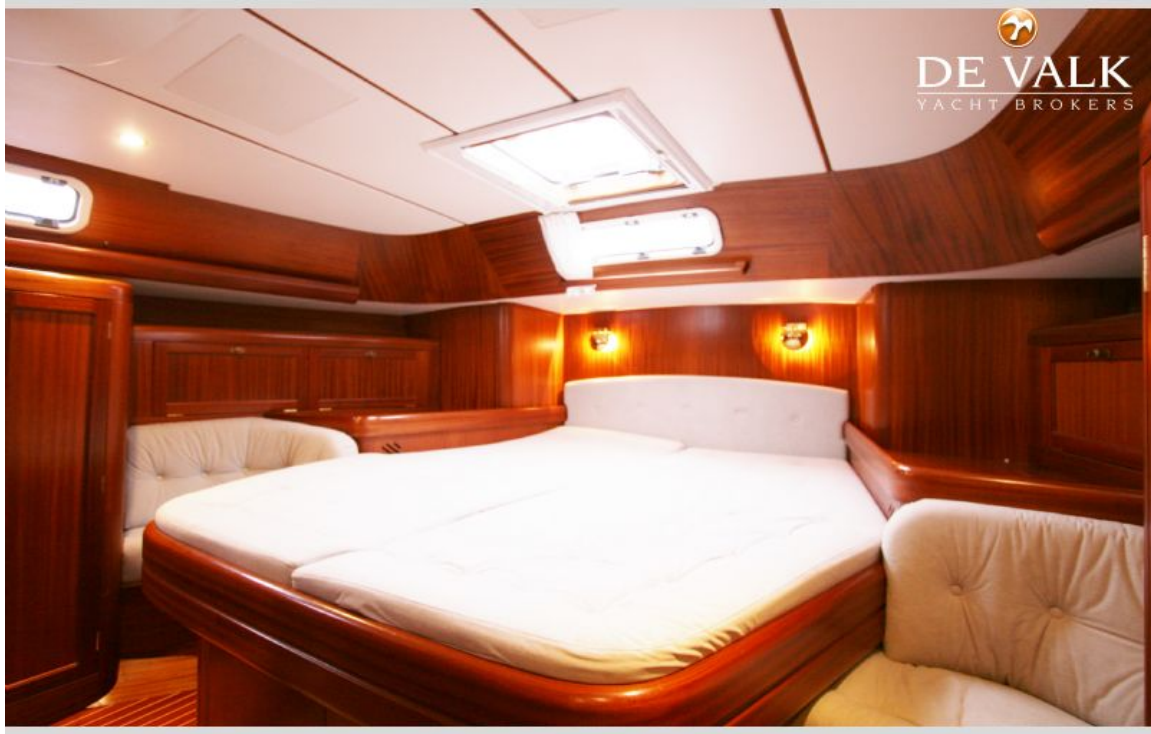
SUNBEAM 42 CC



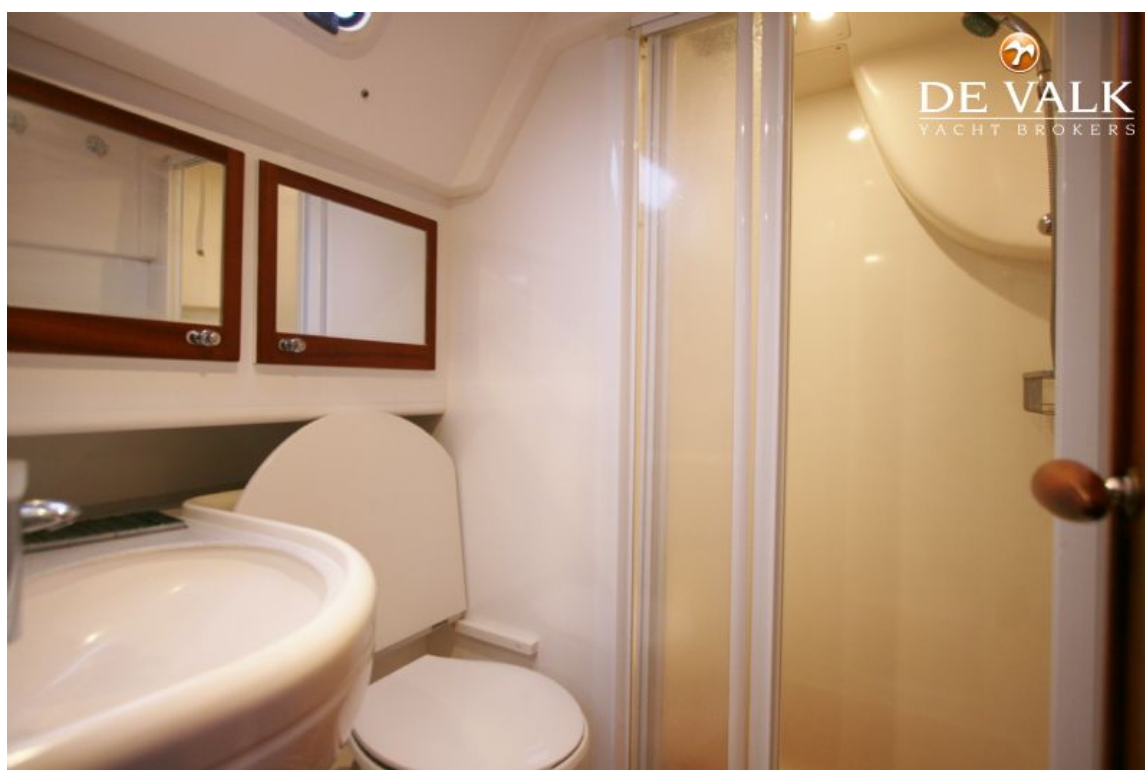
SUNBEAM 42 CC



SUNBEAM 42 CC



SUNBEAM 42 CC



SUNBEAM 42 CC

