



DE VALK
YACHT BROKERS



PUFFIN 42



DE VALK
YACHT BROKERS

PUFFIN 42

BROKER'S COMMENTS

Built for her present owner this Puffin 42 offers safety, comfort and reliability. The combination of her shallow draft (1.05/2.35) and deckhouse configuration makes her ideal for living aboard or discover the world. This Puffin 42 "Papegaaiduiker" was built to use (no-nonsense) and she is ready to go.

Johan Schootstra

SPECIFICATIONS

Dimensions	12.73 x 4.20 x 2,35 / 1.05 (m)	Builder	Scheepsbouw Kroes
Built	1996	Cabins	1
Material	Steel	Berths	5
Engine(s)	1 x Peugeot diesel	Hp/Kw	62.00 (hp), 45.57 (kw)
Asking price	sold (VAT)	Lying	contact Hindeloopen

CONTACT

Sales office	De Valk Hindeloopen B.V.	Telephone	+31 514 52 40 00
Address	Oosterstrand 1 8713 JS Hindeloopen NL	E-mail	hindeloopen@devalk.nl

DISCLAIMER

These particulars are given in good faith as supplied but cannot be guaranteed.



GENERAL

Model	PUFFIN 42
Type	sailing yacht
LOA (m)	12,73
LWL (m)	11,20
Beam (m)	4,20
Draft (m)	1,05
Draft min (m)	2,35
Air draft (m)	21,50
Headroom (m)	2,00
Year built	1996
Builder	Scheepsbouw Kroes
Country	The Netherlands
Designer	Olivier van Meer
Displacement (t)	19
Ballast (tonnes)	lead 4,2
Hull material	steel
Hull colour	blue
Hull thickness (mm)	15 / 10 / 5
Hull shape	round-bilged
Keel type	centreboard
Superstructure material	steel
Superstructure (mm)	4
Deck plate thickness (mm)	4
Rubbing strake	steel
Deck material	steel
Deck finish	non-skid paint Coelan Farb Chips
Superstructure deck finish	non-skid paint
Cockpit deck finish	teak Paint and
Antifouling (year)	2015
Dorades	3



Window frame	brass
Window material	tempered glass
Deckhatch	5x and 2x dormer
Portholes	brass
Insulation	foam plates
Radar arch	non collapsible
Fuel tank (litre)	steel 2x 250
Level indicator (fuel tank)	yes
Freshwater tank (litre)	steel 2 separate tanks - a total of 900 liters
Level indicator (freshwater)	yes
Blackwater tank (litre)	steel
Blackwater tank extraction	deck extraction + pump
Wheel steering	hydraulic
Outside helm position	yes

ACCOMMODATION

Cabins	1
Berths	5
Interior	mahogany
Floor	parquet
Open cockpit	yes
Deck saloon	yes
Saloon	yes
Headroom saloon (m)	>2
Heating	diesel ducted hot air Webasto 5L
Chart table	yes
Dinette	yes
Galley	yes
Countertop	stainless steel
Sink	stainless steel
Cooker	calor gas Broadwater Marine stove - 4 burner



Oven	In cooker
Fridge	With freezer
Hot water system	220V + engine
Water pressure system	electrical
Owners cabin	double bed
Bed length (m)	>2
Wardrobe	drawers and shelves
Toilet	separate
Toilet system	manual
Wash basin	at the toilet
Shower	separate
Guest cabin 1	double bed
Bed length (m)	>2
Guest cabin 2	single bed
Bed length (m)	>2

MACHINERY

No of engines	1
Make	Peugeot
HP	62,00
kW	45,57
Fuel	diesel
Year installed	1997
Maximum speed (kn)	7
Cruising speed (kn)	6,5
Engine hours	2100
Engine cooling system	freshwater heat exchanger
Drive	shaft
Engine controls	bowden cable
Gearbox	mechanical
Bowthruster	electric Vetus



Exhaust	watercooled
Thrust bearing	yes
Propeller type	fixed
Propeller blades	3
Propeller shaft material	stainless steel
Shaft lubrication	water
Manual bilge pump	yes
Electric bilge pump	yes
Electrical installation	12 volt
Batteries	yes
Start battery	1x 90Ah - maintenance free
Service battery	2x 175Ah - semi-traction
Bowthruster battery	1x 125Ah - maintenance free
Battery monitor	Vetus BW-3
Battery charger	Vetus BC-30
Diode battery combiners	yes
Shorepower	with cable

NAVIGATION

Compass	Cassens & Plath
Electric compass	Autohelm ST30 COMPASS
Depth sounder	In Autohelm ST30 Bidata
Log	In Autohelm ST30 Bidata
Windset	Autohelm ST30 WIND
VHF	Sailer 6215 DSC
GPS	Furuno GP-32
Radar/GPS/plotter	Furuno Navnet c-map nt
Electronic chart(s)	yes
Personal MOB transmitter	On Sailer VHF

EQUIPMENT



Fixed windscreen	yes
Winter cover	does not cover the whole ship
Cockpit table	one large and one small
Boarding ladder	stainless steel
Anchor	CQR Plough
Anchor chain	yes
Anchor 2	Delta
Windlass	manual
Capstan	yes
Sea railing	stainless steel
Grab rail (superstructure)	stainless steel
Pushpit	yes
Pulpit	yes
Lifebuoy	yes
Danbuoy	yes
Safety lines on deck	yes
Radar reflector	yes
Fenders	yes
Mooring lines	yes
Spare parts	yes
TV	Philips
TV receiver	Digitenne
Radio-cd player	JVC
iPod connection	Op radio
Speakers in salon	yes
Clock - barometer	yes
Fire extinguisher	yes

RIGGING

Rigging	cutter
Standing rigging	wire



Brand mast	Sparcraft
Material mast	aluminium
Spreaders	2 pair
Mainsail	43m ² - must be replaced
Mainsail cover	yes
Cutterstay	yes
Jib	27m ² - 2011
Genoa	46m ² - 2012
Genoa furler	yes
Cutter furler	yes
Gennaker	100m ²
Reefing System	slabreefing
Boomvang	gasspring
Primary sheet winch	1x Lewmar 40
Secondary sheet winch	2x Lewmar 44
Genoa sheetwinches	2x Lewmar 48
Halyard winches	2x Lewmar 40 on mast
Reefing winch	1x Lewmar 16 on mast
Spi-pole	aluminium



PUFFIN 42



PUFFIN 42



PUFFIN 42



PUFFIN 42



PUFFIN 42



PUFFIN 42



PUFFIN 42



PUFFIN 42



PUFFIN 42



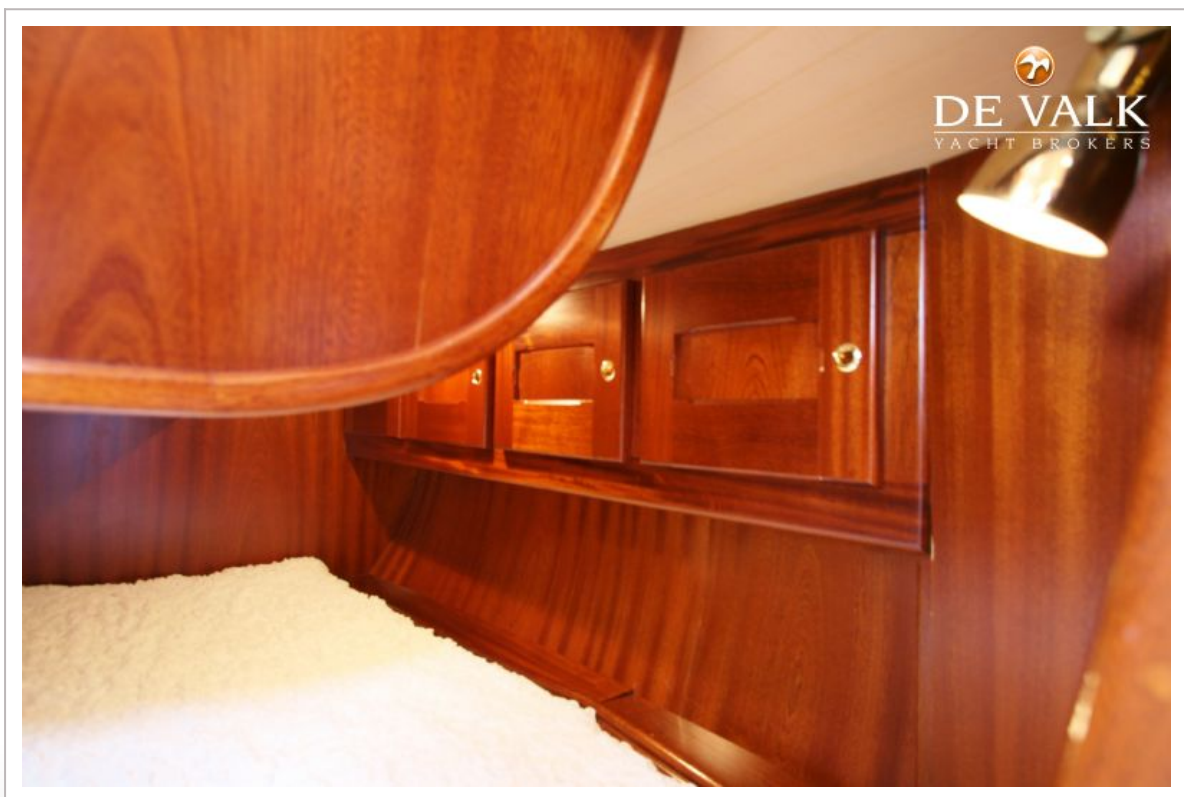
PUFFIN 42



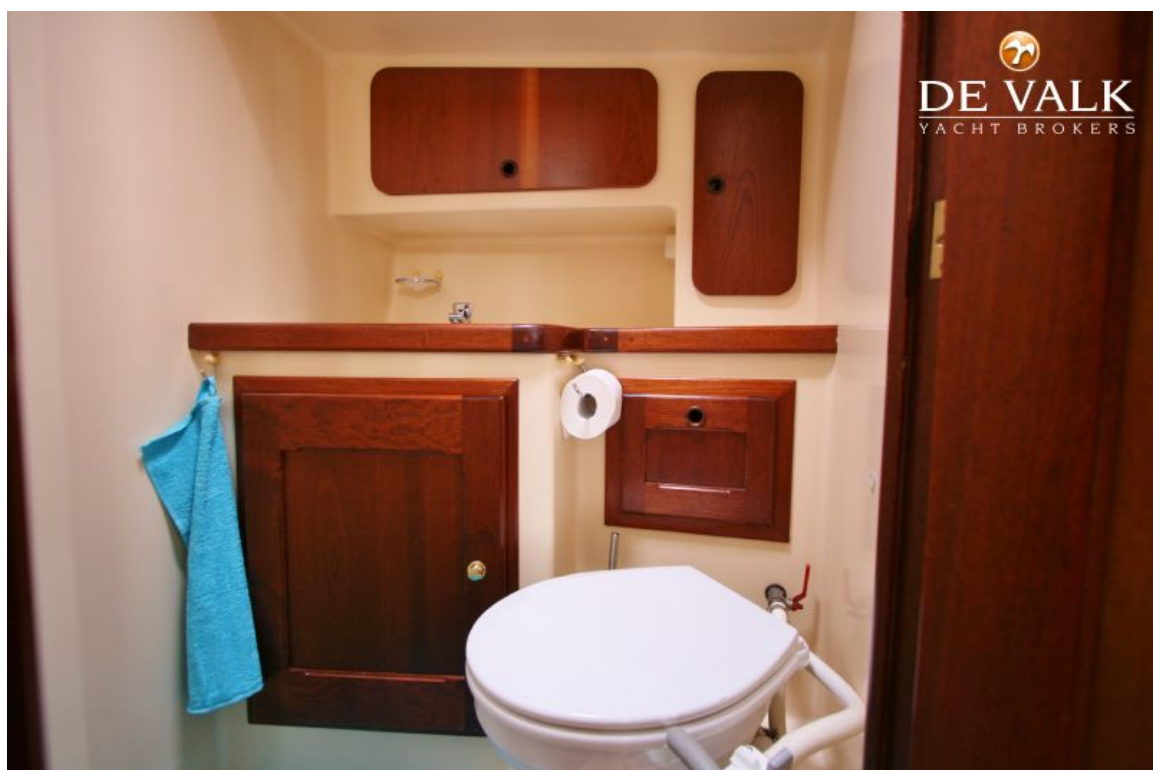
PUFFIN 42



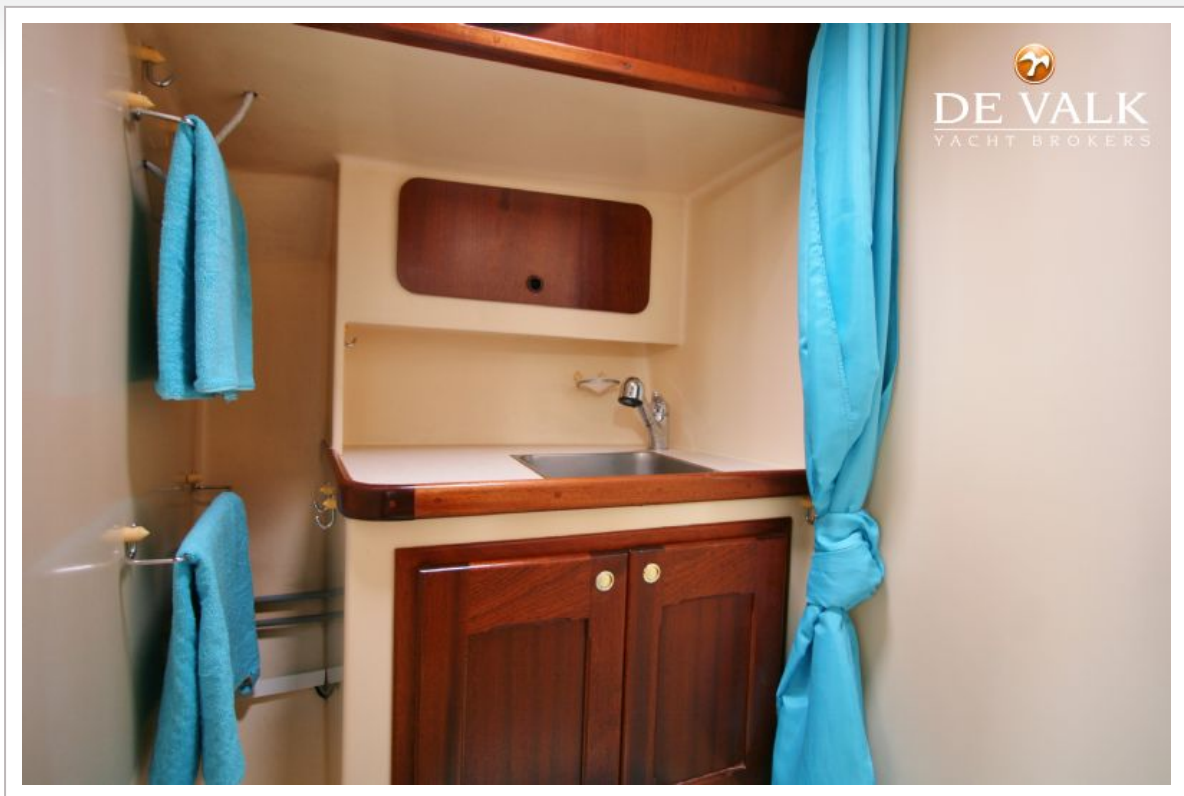
PUFFIN 42



PUFFIN 42



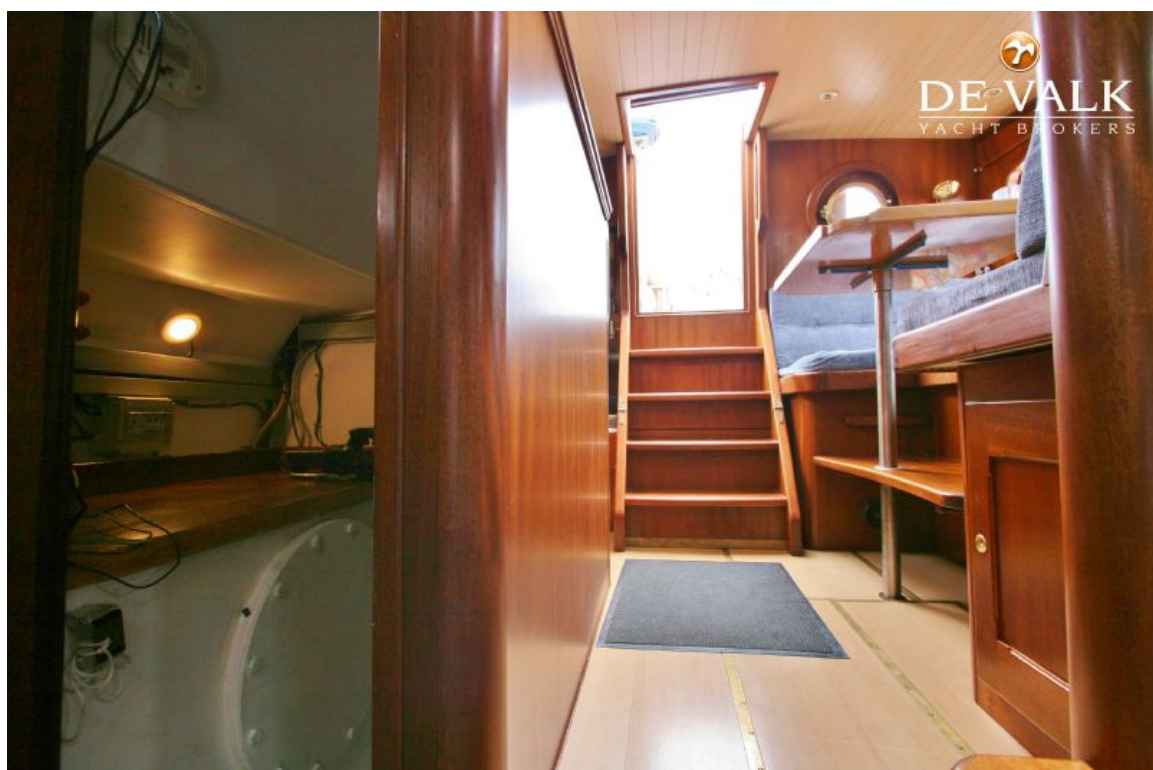
PUFFIN 42



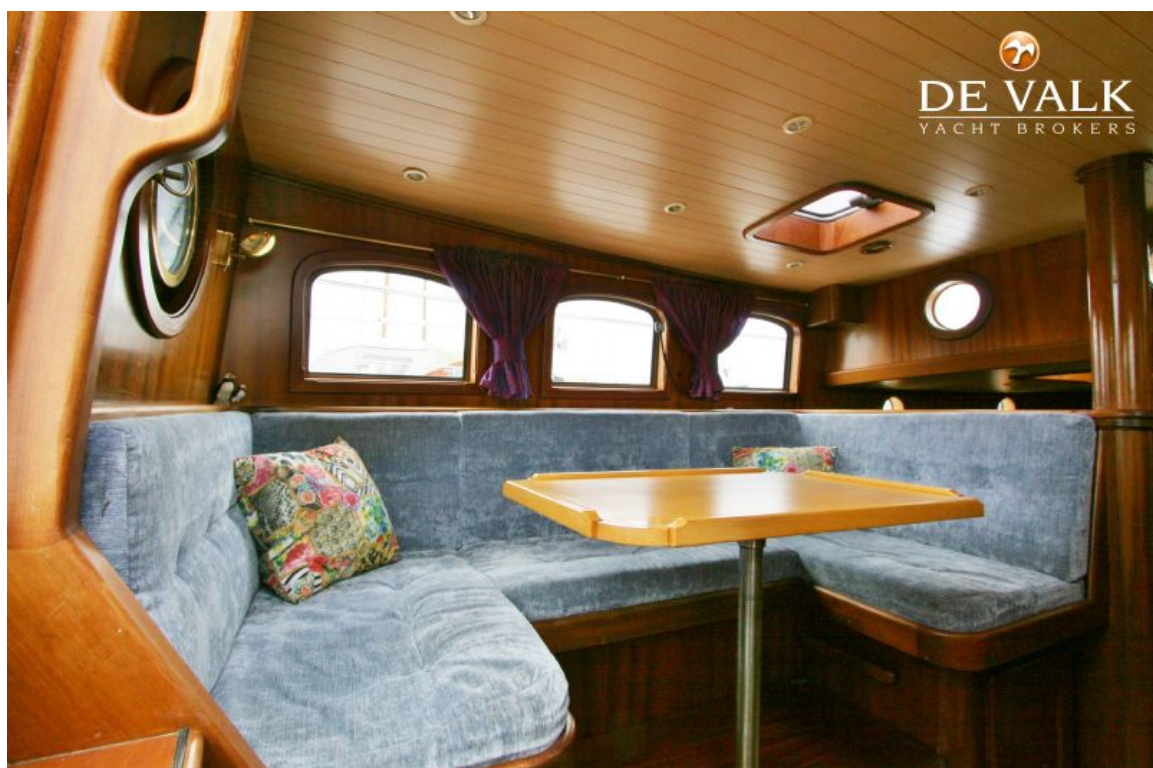
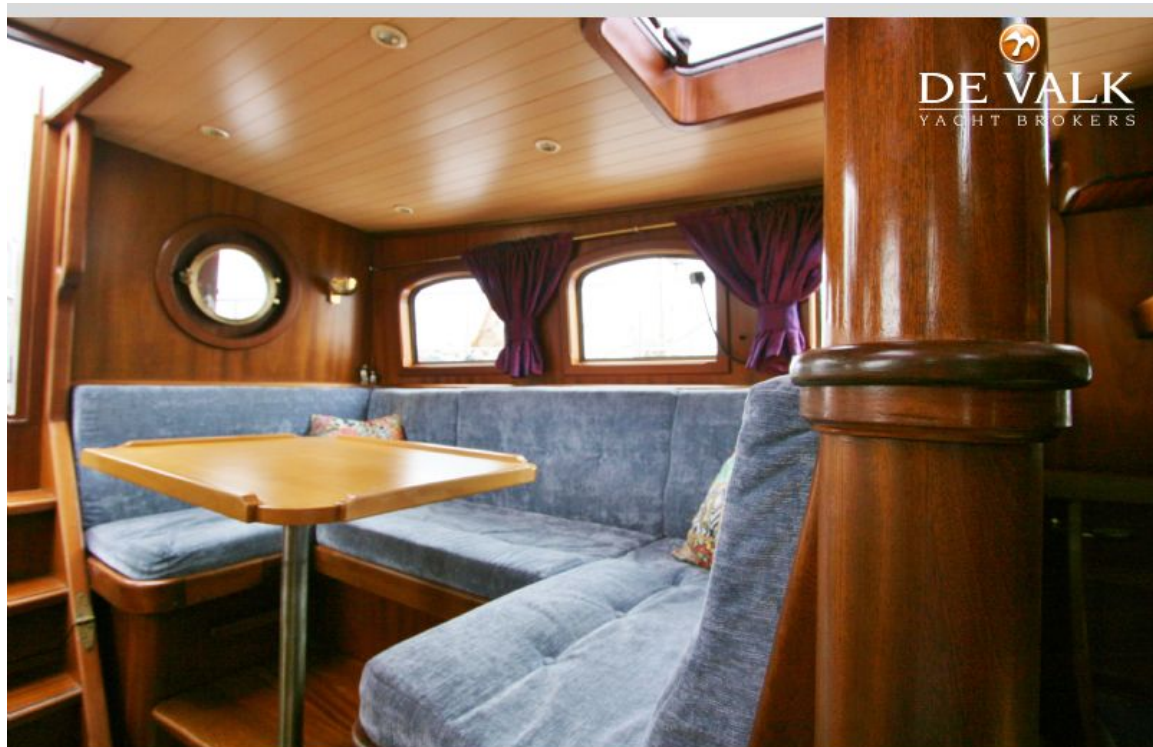
PUFFIN 42



PUFFIN 42



PUFFIN 42



PUFFIN 42



PUFFIN 42

