



DE VALK
YACHT BROKERS



ZACA 60 SCHOONER



DE VALK
YACHT BROKERS

ZACA 60 SCHOONER

BROKER'S COMMENTS

The Zaca 60 Schooner "Netteman" has been built entirely along the line of its predecessors, and designed by Olivier F. van Meer on the basis of various classical Schooners. The Spirit of bygone ages has been recreated with contemporary luxury by the yachtbuilders. You too can experience the era of merchant vessels of the past and the comforts of the 21st century when you sail on this unique Zaca 60 Schooner. She is in very good condition and is manageable with small crew.

Henk Sijbranda

SPECIFICATIONS

Dimensions	21.02 x 5.65 x 1,70 / 3.60 (m)	Builder	V&O Yachting BV
Built	2006	Cabins	3
Material	Steel	Berths	6
Engine(s)	1 x Iveco AIVO 8061 M14 diesel	Hp/Kw	145.00 (hp), 106.58 (kw)
Asking price	sold (VAT)	Lying	at sales office

CONTACT

Sales office	De Valk Hindeloopen	Telephone	+31 514 52 40 00
Address	Oosterstrand 1 8713 JS Hindeloopen The Netherlands	E-mail	hindeloopen@devalk.nl

DISCLAIMER

These particulars are given in good faith as supplied but cannot be guaranteed.



ZACA 60 SCHOONER

GENERAL

Model	ZACA 60 SCHOONER
Type	sailing yacht
LOA (m)	21,02
LWL (m)	13,93
Beam (m)	5,65
Draft (m)	3,60
Draft min (m)	1,70
Air draft (m)	23,00
Year built	2006
Builder	V&O Yachting BV
Country	The Netherlands
Designer	Olivier van Meer
Displacement (t)	45,5
Ballast (tonnes)	lead 6,5
CE norm	A
Hull material	steel
Hull colour	Creme colour RAL 1015
Hull thickness (mm)	6 mm
Hull shape	round-bilged
Keel type	centreboard 1,70 - 3,60
Superstructure material	wood Teak
Superstructure (mm)	52 mm
Deck plate thickness (mm)	18 mm
Rubbing strake	wood Stainless steel
Deck material	wood
Deck finish	teak 16 mm
Superstructure deck finish	teak
Cockpit deck finish	teak
Antifouling (year)	2014 (after that 2 years on the hard, in the water 2016)
Dorades	yes



ZACA 60 SCHOONER

Window frame	aluminium
Window material	double glazing RAFA 10/8 mm, ISO 614
Deckhatch	RAFA double glazing
Portholes	brass Wigo Dubrit 8 MM
Insulation	Rockwool 50 mm with folie
Fuel tank (litre)	steel Starboard 730 ltr + keel 300 ltr. integrated in hull
Fuel tank 2 (litre)	steel BB 730 ltr. integrated in hull
Level indicator (fuel tank)	Central Tanktender
Fuel daytank (litre)	steel 135 ltr.
Level indicator (daytank)	VDO Electrison + Alarm + peilglas
Freshwater tank (litre)	steel 2x 730 integrated in hull
Level indicator (freshwater)	Central tanktender
Blackwater tank (litre)	steel 500
Level indicator (blackwater)	Central tanktender
Blackwater tank extraction	deck extraction + pump 1 x 24V 40 ltr./min. and 1 x 220V 80 ltr/min.
Wheel steering	hydraulic
Outside helm position	hydraulic V&O Yachting Hydro 63/648/5,6
Emergency tiller	yes

ACCOMMODATION

Cabins	3
Berths	6
Interior	mahogany
Layout	Classic
Floor	wood Maple with floor hatches
Open cockpit	yes
Deck saloon	Headroom 1,95
Saloon	yes
Headroom saloon (m)	1,95 - 2,00
Heating	central heating Kabola B12, diesel



ZACA 60 SCHOONER

Galley	yes
Countertop	corian
Sink	stainless steel Double with corian cover plates
Cooker	electric Keramisch
Oven	Combi oven Siemens HF 73950
Extractor	Siemens LZ 23200
Microwave	Combi with oven
Fridge	Siemens KI 14 REI
Freezer	Siemens GI 11 BEI
Hot water system	220V Boiler 50 ltr.
Water pressure system	electrical Jabsco Duo Max
Kettle	Philips
Coffee maker	Philips
Owners cabin	double bed
Bed length (m)	1,40 x 2,00
Wardrobe	hanging/drawers/shelves
Bathroom	separate Corian
Toilet	en suite
Toilet system	electric Closed system with cutter, clean water
Wash basin	in the bathroom
Shower	en suite
Guest cabin 1	v-bed
Bed length (m)	2,00
Wardrobe	hanging and shelves
Bathroom	shared
Toilet	shared
Toilet system	electric
Wash basin	in the cabin
Guest cabin 2	bunk bed
Bed length (m)	2,10
Wardrobe	hanging and shelves
Wash basin	in the bathroom



ZACA 60 SCHOONER

Shower shared

MACHINERY

No of engines	1
Make	Iveco AIVO
Type	8061 M14
HP	145,00
kW	106,58
Fuel	diesel
Year installed	2002
Maximum speed (kn)	7
Cruising speed (kn)	5,5
Consumption (l/hr)	12
Range (nm)	800
Engine hours	800
Engine cooling system	freshwater heat exchanger Silent seperator
Drive	shaft
Engine controls	bowden cable Mechanical
Gearbox	hydraulic PRM 500 D3 1:3
Bowthruster	Cupa 90 24V, electric 7 KW
Thrust bearing	Python drive PD W1
Propeller type	feathering Max Prop
Propeller blades	3
Propeller shaft material	stainless steel 60 mm
Shaft lubrication	water
Manual bilge pump	Jabsco Amazon warior 135 ltr/min
Electric bilge pump	70 ltr/min
Bilge alarm	Mastervolt
Electrical installation	yes
Generator	silent separator Diesel Westerbeke Mastervolt 8,3 BTD 514
Running hours generator	800



ZACA 60 SCHOONER

Batteries	2 x navigation batteries each 12 V. and 225 Ah
Start battery	2 x 12 V, 120 Ah
Service battery	8 x 12 V, 225 Ah
Generator battery	1 x 12 V, 85 Ah
Bowthruster battery	2 x 12 V, 225 Ah
Windlass battery	See bowthruster battery
Battery monitor	Mastervolt
Battery charger	Mastervolt 2 x 75 A, 1 x 25 A
Inverter	Mastervolt Sinus Dakar 5000 W.
Diode battery combiners	2
Shorepower	with cable 30 m.,
Insulation transformer	Mastervolt Ivet 6 + soft start

NAVIGATION

Compass	Liquid on steering pedestal, Cassens & plath delta
Depth sounder/log	Simrad IS 15
Windset	Simrad Basis combi IS 15 wind system
VHF	Simrad RS 82 - D- B VHF
Autopilot	Robertson Simrad AP 20
Rudder angle indicator	RF 300
Radar/GPS/plotter	Simrad C X 44
PC connection	220 V No break
Radio receiver	Icom IC - M710 (not connected)
Searchlight	Aqua signal

EQUIPMENT

Fixed windscreen	6
Sprayhood	yes
Bimini	yes
Winter cover	Compleet
Cockpit table	Teak



ZACA 60 SCHOONER

Boarding ladder	yes
Anchor	Danforth
Anchor chain	100 mtr., 13 mm galvanized
Windlass	electrical Remote control, Loftrans titan A 2000 W, 24 V.
Capstan	On windlass
Deck wash	Jabsco 40 ltr/min
Sea railing	stainless steel Wiring
Grab rail (superstructure)	teak
Railing side opening gates	Both sides and aft.
Pushpit	yes
Lifejackets	yes
Lifebuoy	yes
Horn	electric
Fenders	yes
Mooring lines	yes
Spare parts	yes
Tools	yes
TV	LG
TV receiver	Digitene
Radio-cd player	yes
Clock - barometer	yes
Fire extinguisher	3 x
Latest extinguisher survey	New 2017
Auto extinguisher system	Fire pro FP 1200 MK/Firepro fp20 generator, checked 27-02-2017

RIGGING

Rigging	schooner
Standing rigging	Dyform
Brand mast	Master Masten
Material mast	aluminium coated



ZACA 60 SCHOONER

Spreaders	Aluminium
Keel stepped mast	Aft mast keel stepped, mast with support keel
Mainsail	yes
Fully battened mainsail	yes
Main staysail	yes
Jib	Furling profurl LG 42 boom jib
Yankee	Furling Profurl LC 42
Self tacking jib installation	yes
Reefing System	slabreefing
Backstay adjuster	mechanical
Boomvang	tackle 2 x
Primary sheet winch	Andersen
Halyard winches	Andersen
Reefing winch	Andersen
Isolated backstay	yes
Extra info	All sails by De Vries



ZACA 60 SCHOONER



ZACA 60 SCHOONER



ZACA 60 SCHOONER



ZACA 60 SCHOONER



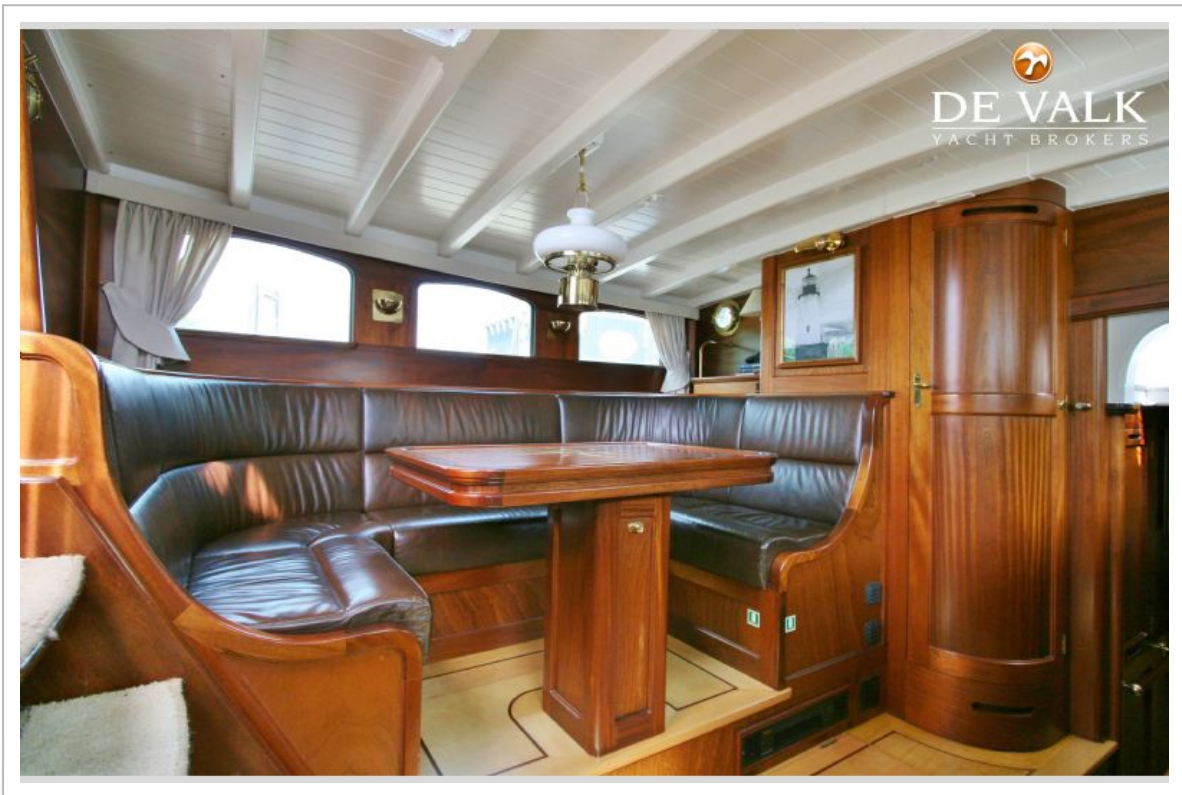
ZACA 60 SCHOONER



ZACA 60 SCHOONER



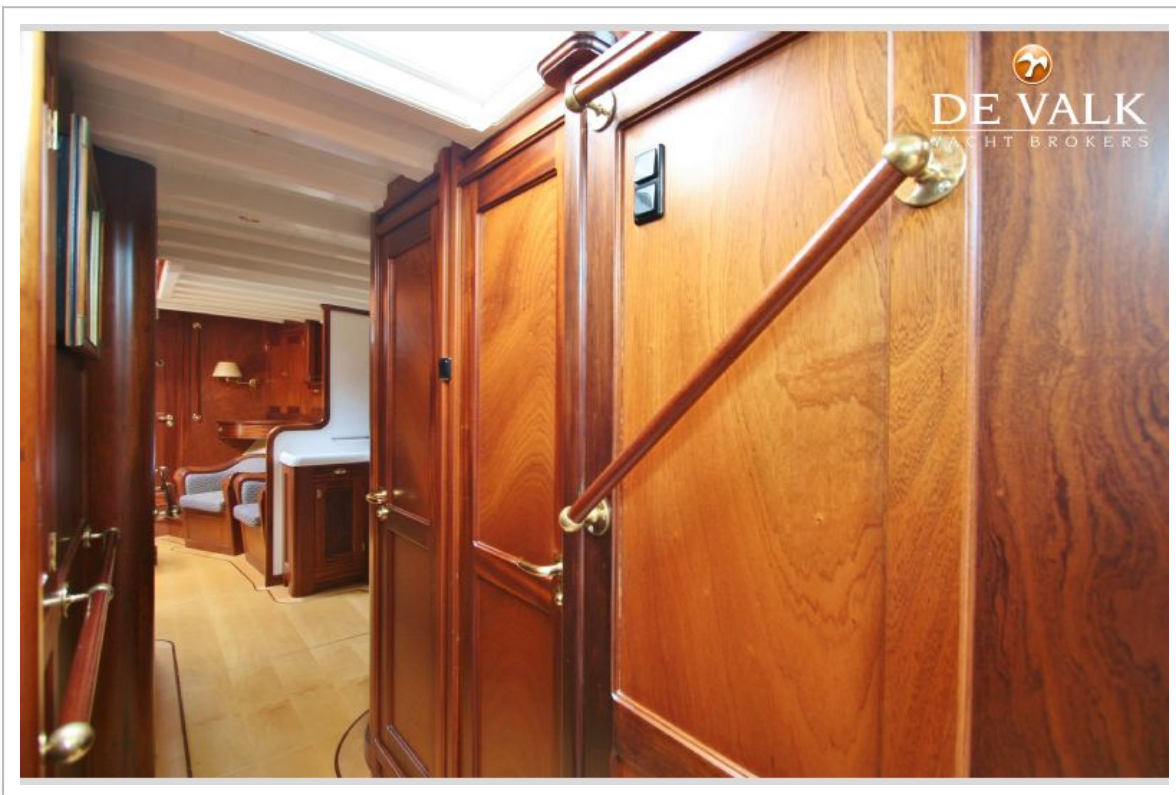
ZACA 60 SCHOONER



ZACA 60 SCHOONER



ZACA 60 SCHOONER



ZACA 60 SCHOONER



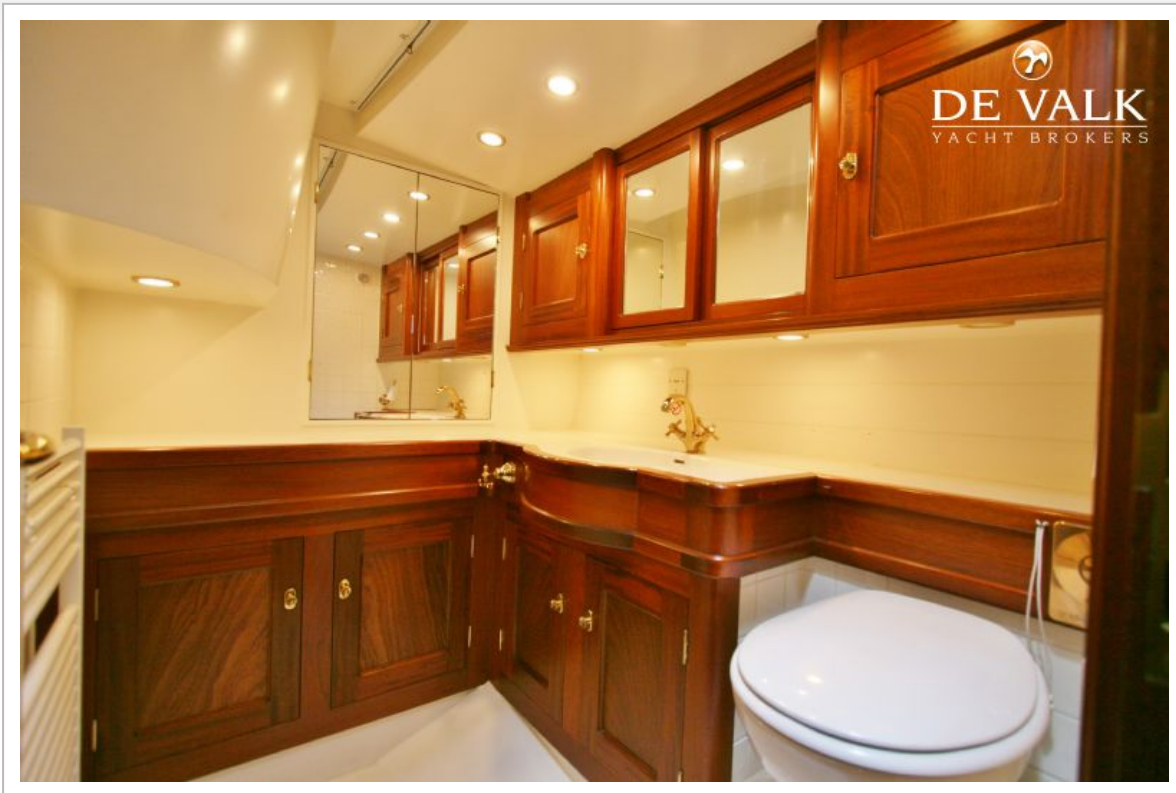
ZACA 60 SCHOONER



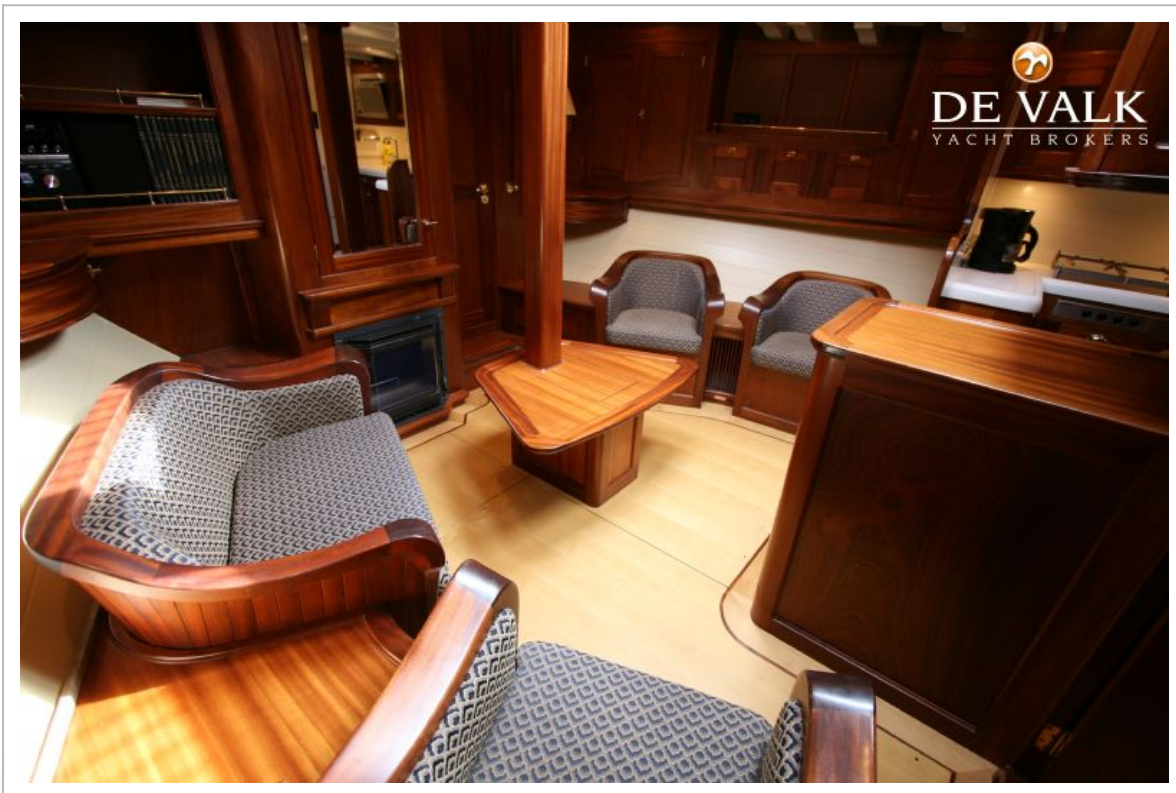
ZACA 60 SCHOONER



ZACA 60 SCHOONER



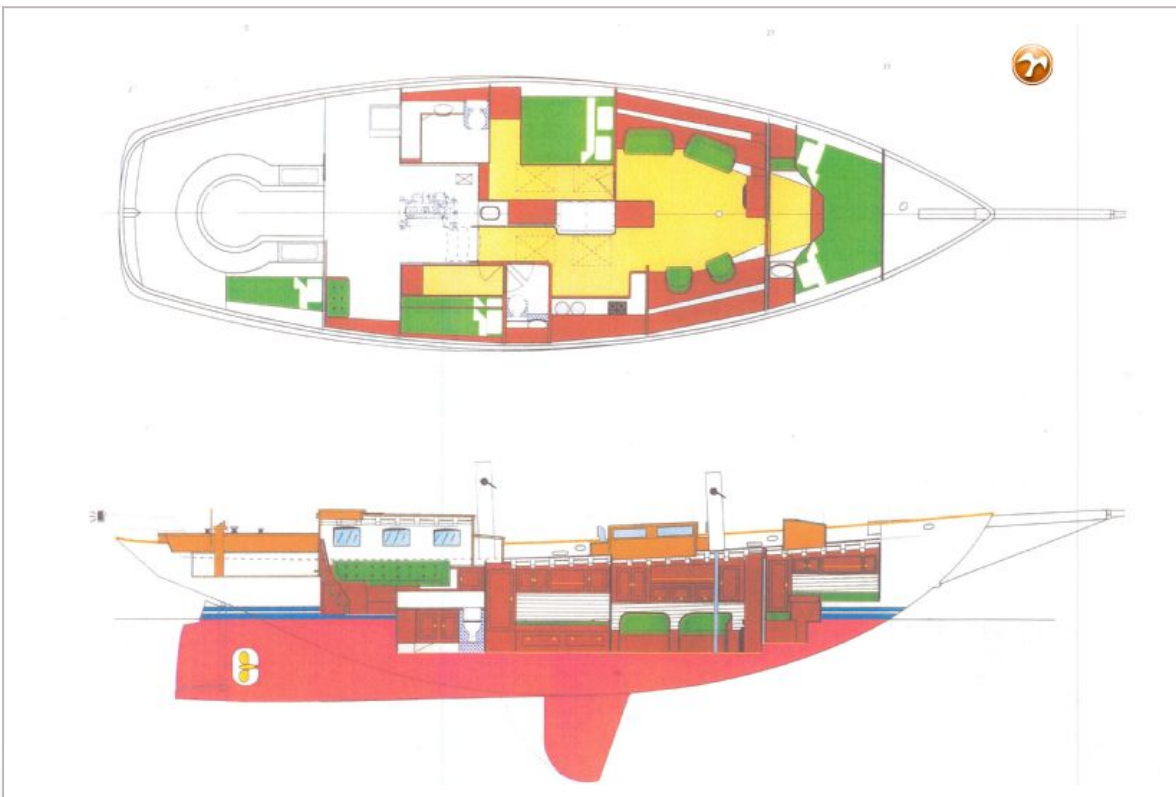
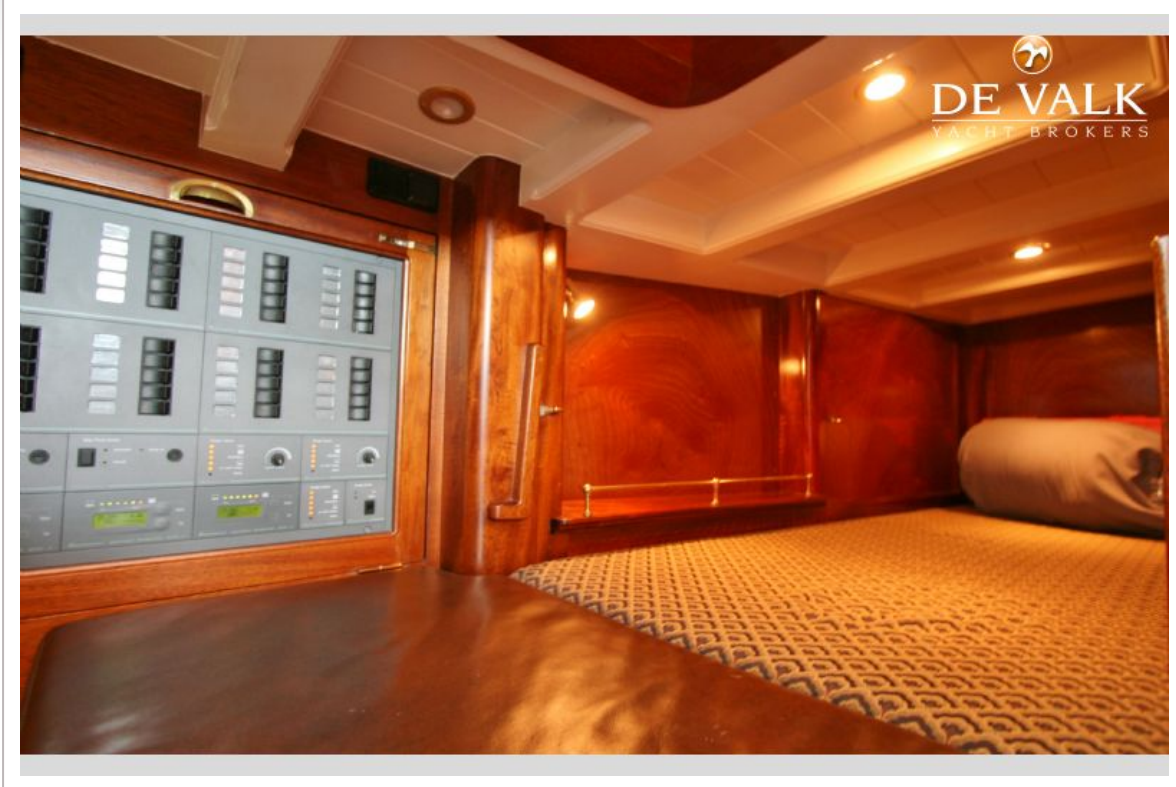
ZACA 60 SCHOONER



ZACA 60 SCHOONER



ZACA 60 SCHOONER



ZACA 60 SCHOONER

