



DE VALK
YACHT BROKERS



BRUCE ROBERTS 13.50



DE VALK
YACHT BROKERS

BROKER'S COMMENTS

Well proven Classic design by the famous Bruce Roberts. Current owner has kept her up to date for living on board and safe long distance cruising, the next owner of this Bruce Roberts sailing yacht will be in possession of a unique yacht which will offer him or her many pleasant cruises.

Henk Sijbranda

SPECIFICATIONS

| | | | |
|---------------------|-------------------------|----------------|--------------------------|
| Dimensions | 13.56 x 4.40 x 1.45 (m) | Builder | R. Padbury Littlehampton |
| Built | 1980 | Cabins | 2 |
| Material | Steel | Berths | |
| Engine(s) | 1 x Ford Lehman diesel | Hp/Kw | 80.00 (hp), 58.80 (kw) |
| Asking price | sold (VAT) | Lying | contact Hindeloopen |

CONTACT

| | | | |
|---------------------|--|------------------|-----------------------|
| Sales office | De Valk Hindeloopen | Telephone | +31 514 52 40 00 |
| Address | Oosterstrand 1 8713 JS Hindeloopen The Netherlands | E-mail | hindeloopen@devalk.nl |

DISCLAIMER

These particulars are given in good faith as supplied but cannot be guaranteed.



GENERAL

| | |
|-----------------------------------|----------------------------|
| Model | BRUCE ROBERTS 13.50 |
| Type | motorsailer |
| LOA (m) | 13,56 |
| Beam (m) | 4,40 |
| Draft (m) | 1,45 |
| Year built | 1980 |
| Builder | R. Padbury Littlehampton |
| Country | Great Britain |
| Designer | Bruce Roberts |
| Displacement (t) | 20 |
| Hull material | steel |
| Hull colour | black |
| Hull thickness (mm) | 5 mm |
| Hull shape | full bilged |
| Keel type | long keel |
| Superstructure material | steel |
| Superstructure (mm) | 5 |
| Deck plate thickness (mm) | 5 |
| Rubbing strake | rubber |
| Deck material | steel |
| Deck finish | non-skid moulded in |
| Superstructure deck finish | teak |
| Cockpit deck finish | paint |
| Dorades | yes |
| Window frame | aluminium |
| Deckhatch | 3 |
| Portholes | aluminium |
| Insulation | foam plates 22mm Isomatten |
| Radar arch | non collapsible |
| Mast can be lowered | manual |



| | |
|------------------------------|----------------|
| Fuel tank (litre) | steel 700 |
| Level indicator (fuel tank) | yes |
| Freshwater tank (litre) | steel 1000 |
| Level indicator (freshwater) | yes |
| Wheel steering | cable steering |
| Inside helm position | yes |
| Outside helm position | cable steering |

ACCOMMODATION

| | |
|-----------------------|-----------------------|
| Cabins | 2 |
| Interior | bambo |
| Layout | Classic |
| Floor | carpet |
| Heating | diesel ducted hot air |
| Heating 2 | electric 220V |
| Aft Cabin | yes |
| Galley | yes |
| Countertop | yes |
| Sink | stainless steel |
| Cooker | calor gas |
| Oven | Gas |
| Hot water system | 220V + engine |
| Water pressure system | electrical |
| Crockery | yes |
| Owners cabin | double bed |
| Bed length (m) | 2 |
| Wardrobe | drawers |
| Bathroom | en suite |
| Toilet | separate |
| Wash basin | at the toilet |
| Shower | yes |



| | |
|----------------|-------|
| Guest cabin 1 | v-bed |
| Bed length (m) | 2 |

MACHINERY

| | |
|--------------------------|--------------|
| No of engines | 1 |
| Make | Ford Lehman |
| HP | 80,00 |
| kW | 58,80 |
| Fuel | diesel |
| Maximum speed (kn) | 8 |
| Cruising speed (kn) | 6 |
| Consumption (l/hr) | 6,5 |
| Engine cooling system | seawater |
| Engine controls | bowden cable |
| Bowthruster | electric |
| Sternthruster | hydraulic |
| Propeller shaft material | steel |
| Shaft lubrication | water |
| Manual bilge pump | yes |
| Electric bilge pump | yes |
| Generator | wet exhaust |
| Start battery | 1 |
| Service battery | 2 |
| Solar panel | 2 |
| Shorepower | with cable |

NAVIGATION

| | |
|------------------------|-----|
| Depth sounder | yes |
| VHF | yes |
| Rudder angle indicator | yes |
| GPS | yes |



| | |
|------------------|--------------------|
| Radar/GPS | yes |
| Weather receiver | yes |
| Navtex | yes |
| AIS receiver | New, not installed |
| AIS transponder | New, not installed |
| Loudhailer | yes |

EQUIPMENT

| | |
|----------------------------|-----------------------|
| Sprayhood | yes |
| Boarding ladder | yes |
| Deck shower | yes |
| Anchor | yes |
| Anchor chain | yes |
| Anchor 2 | yes |
| Windlass | manual |
| Windlass aft | manual |
| Dinghy | rigid inflatable |
| Outboard support | yes |
| Davits | stainless steel |
| Davits controls | electrical |
| Sea railing | stainless steel |
| Railing side opening gates | yes |
| Pushpit | yes |
| Life raft | container |
| Life raft (pers) | 4-6 |
| Lifejackets | 2 |
| Wiper | 2 |
| Horn | air pressure Electric |
| Binocular | yes |
| Mooring lines | yes |
| TV | yes |



| | |
|-------------------|-----|
| Satellite | yes |
| Radio-cd player | yes |
| iPod connection | yes |
| Cockpit speakers | yes |
| Speakers in salon | yes |
| Clock - barometer | yes |
| Fire extinguisher | yes |

RIGGING

| | |
|-------------------------|-----------|
| Rigging | ketch |
| Material mast | aluminium |
| Mainsail | yes |
| Mainsail cover | yes |
| Fully battened mainsail | yes |
| Stoway mast | yes |
| Mizzen | yes |
| Mizzen sailcover | yes |
| Jib | yes |
| Genoa | yes |



BRUCE ROBERTS 13.50



BRUCE ROBERTS 13.50



BRUCE ROBERTS 13.50





BRUCE ROBERTS 13.50



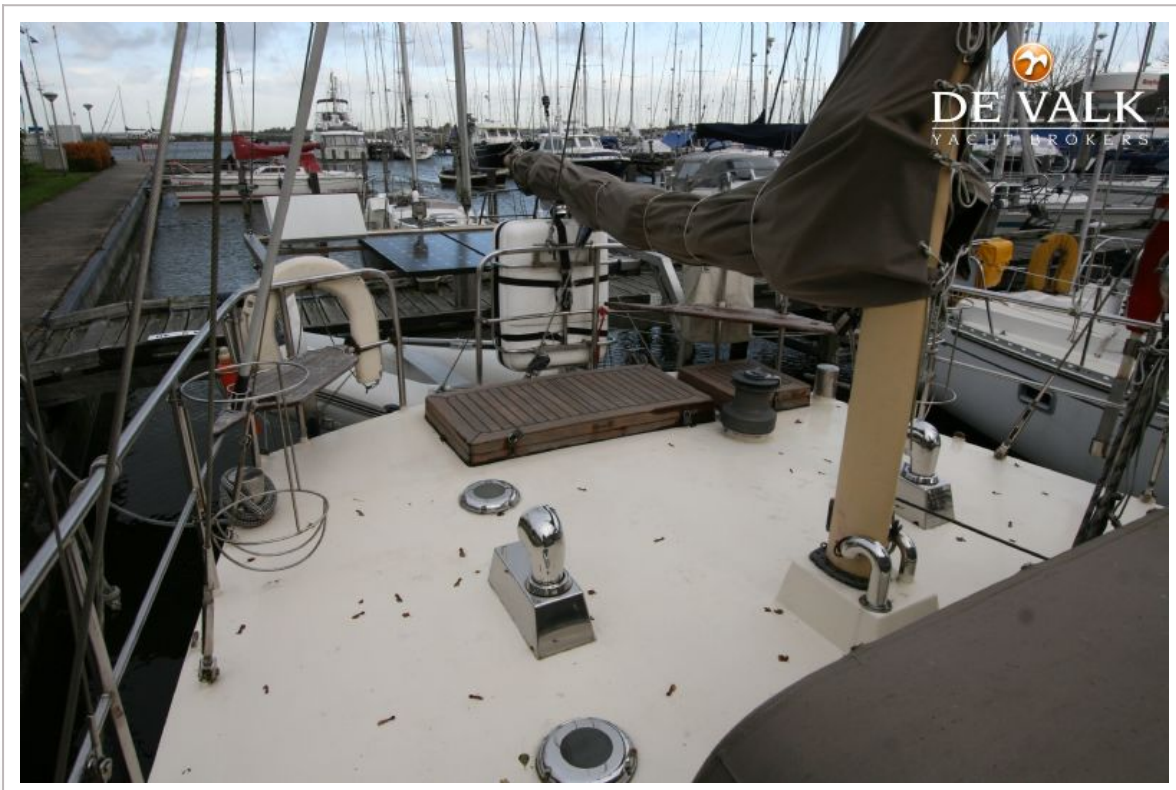


BRUCE ROBERTS 13.50



BRUCE ROBERTS 13.50

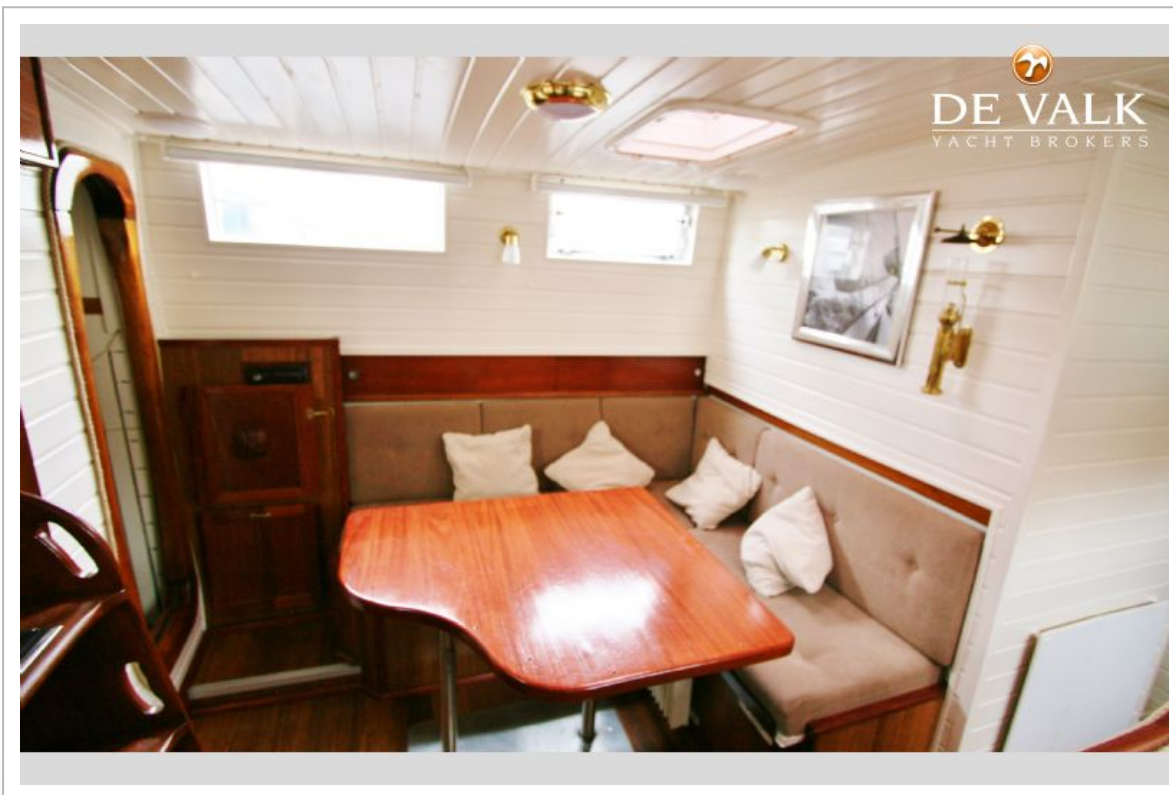
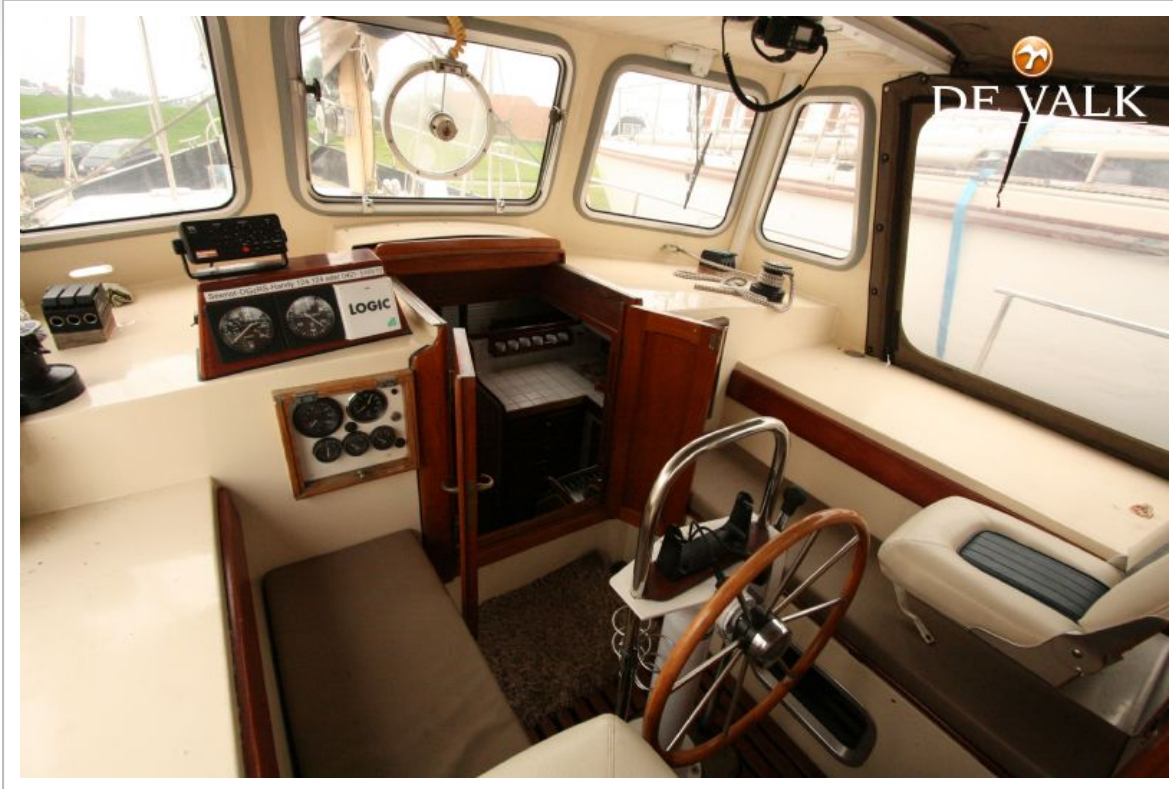




BRUCE ROBERTS 13.50



BRUCE ROBERTS 13.50



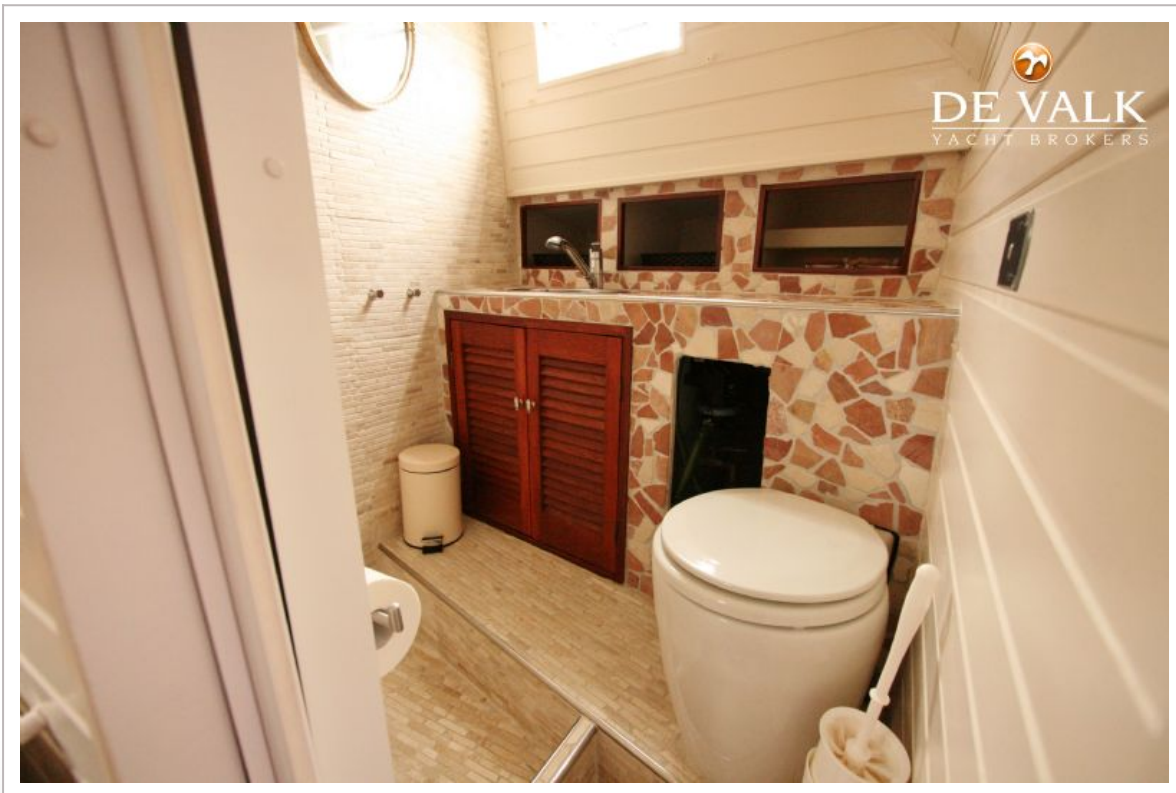


BRUCE ROBERTS 13.50





BRUCE ROBERTS 13.50



BRUCE ROBERTS 13.50





BRUCE ROBERTS 13.50

