



DE VALK
YACHT BROKERS



CONTEST 36S



DE VALK
YACHT BROKERS

BROKERAGE | CHARTER | BERTHS | FINANCE | INSURANCE | YACHT MANAGEMENT

BROKER'S COMMENTS

The Contest 36S is a very much appreciated model in the famous Contest range. Space, performance, reliability, comfort and seaworthiness all rolled into one Dick Zaal design. She will suit the demanding yachtsman in every aspect. Her shallow draft wing keel gives her limitless cruising possibilities without losing performance under sail. This Contest 36S is in a very good condition. Lying in Hindeloopen

Johan Schootstra

SPECIFICATIONS

Dimensions	10.92 x 3.55 x 1.45 (m)	Builder	Conyplex
Built	1991	Cabins	2
Material	GRP	Berths	6
Engine(s)	1 x Volvo Penta 2003 BT diesel	Hp/Kw	43.00 (hp), 31.61 (kw)
Asking price	sold (VAT)	Lying	at sales office

CONTACT

Sales office	De Valk Hindeloopen B.V.	Telephone	+31 514 52 40 00
Address	Oosterstrand 1 8713 JS Hindeloopen NL	E-mail	hindeloopen@devalk.nl

DISCLAIMER

These particulars are given in good faith as supplied but cannot be guaranteed.



GENERAL

Model	CONTEST 36S
Type	sailing yacht
LOA (m)	10,92
LWL (m)	8,90
Beam (m)	3,55
Draft (m)	1,45
Air draft (m)	16,20
Headroom (m)	1,95
Year built	1991
Builder	Conyplex
Country	The Netherlands
Designer	Dick Zaal
Displacement (t)	7,9
Ballast (tonnes)	cast iron 3,5
Hull material	GRP
Hull colour	white
Hull shape	round-bilged
Keel type	wing keel
Superstructure material	GRP
Rubbing strake	Wood with stainless steel
Deck material	GRP
Deck finish	teak
Superstructure deck finish	non-skid moulded in
Cockpit deck finish	teak
Antifouling (year)	2017
Window frame	aluminium
Window material	tempered glass
Deckhatch	3x - Gebo
Fuel tank (litre)	stainless steel 100
Level indicator (fuel tank)	yes



Freshwater tank (litre)	stainless steel 250
Blackwater tank (litre)	Yes
Wheel steering	mechanical Whitlock
Emergency tiller	yes

ACCOMMODATION

Cabins	2
Berths	6
Interior	teak
Floor	teak and holly
Open cockpit	yes
Saloon	yes
Headroom saloon (m)	1,95
Heating	diesel ducted hot air Webasto
Chart table	yes
Aft Cabin	yes
Convertible berth	2x
Galley	yes
Countertop	Duropal
Sink	stainless steel Double
Cooker	Techimpex - 3 burner
Oven	In cooker
Fridge	Isotherm
Hot water system	220V + engine
Water pressure system	electrical
Owners cabin	double bed Afcabin
Bed length (m)	1,95 x 1,75
Wardrobe	hanging and shelves
Wash basin	yes
Guest cabin 1	v-bed
Bed length (m)	2 x 0,65



Wardrobe	shelves
Bathroom	shared
Toilet	yes
Toilet system	electric
Wash basin	yes
Shower	yes

MACHINERY

No of engines	1
Make	Volvo Penta
Type	2003 BT
HP	43,00
kW	31,61
Fuel	diesel
Year installed	1991
Maximum speed (kn)	6,5
Cruising speed (kn)	5,5
Engine cooling system	freshwater heat exchanger
Drive	shaft
Engine controls	bowden cable
Gearbox	mechanical
Bowthruster	electric Vetus
Exhaust	watercooled
Propeller type	fixed
Propeller blades	3
Propeller shaft material	stainless steel
Shaft lubrication	water
Manual bilge pump	yes
Electric bilge pump	yes
Electrical installation	12 and 220V
Batteries	3x 105 Ah



Bowthruster battery

105Ah Wilco Royal

Battery charger

RM-15F 15 Amp.

Shorepower

with cable

NAVIGATION

Compass

C. Plath

Depth sounder

Raymarine ST60+ DEPT

Log

VDO Sumlog

Windset

Raymarine ST60+ WIND

VHF

Shipmate RS 8110

Autopilot

Autohelm 4000

Radar

Furuno Model 1623

GPS

ValSat 2008M2

Plotter/GPS

Geonav 7 Wide

Navtex

Nasa Marine Target Navtex Pro

EQUIPMENT

Fixed windscreen

yes

Sprayhood

yes

Boarding ladder

stainless steel

Anchor

CQR Plough

Anchor chain

yes

Windlass

manual Simpson Lawrence

Capstan

yes

Sea railing

stainless steel Wire

Grab rail (superstructure)

teak

Pushpit

yes

Pulpit

yes

Danbuoy

yes

Fenders

yes

Mooring lines

yes



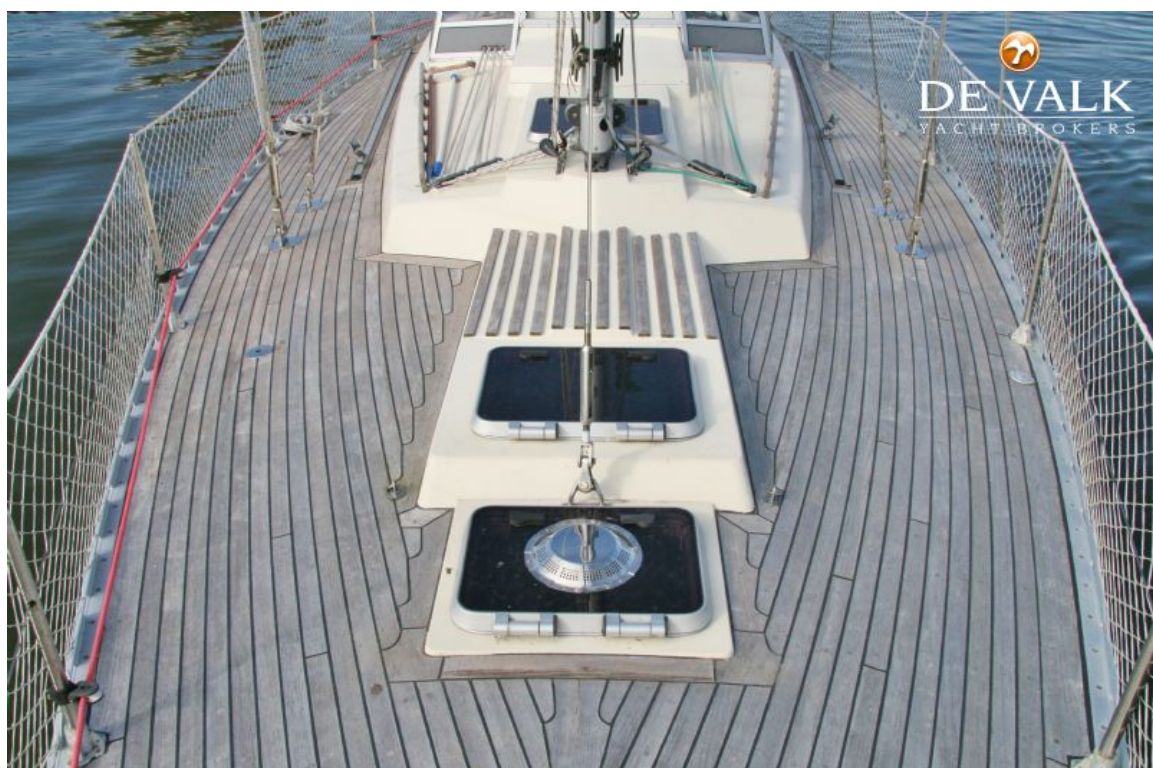
RIGGING

Rigging	sloop
Standing rigging	wire
Brand mast	Seldén
Material mast	aluminium
Spreaders	2 pair
Mainsail	yes
Stoway mast	yes
Jib	yes
Genoa	yes
Reefing System	main in-mast furling
Backstay adjuster	mechanical
Boomvang	tackle
Primary sheet winch	yes
Genoa sheetwinches	2x Enkes - 28 ASC two speed
Reefing winch	1x Enkes 18
Spi-pole	aluminium
Isolated backstay	yes



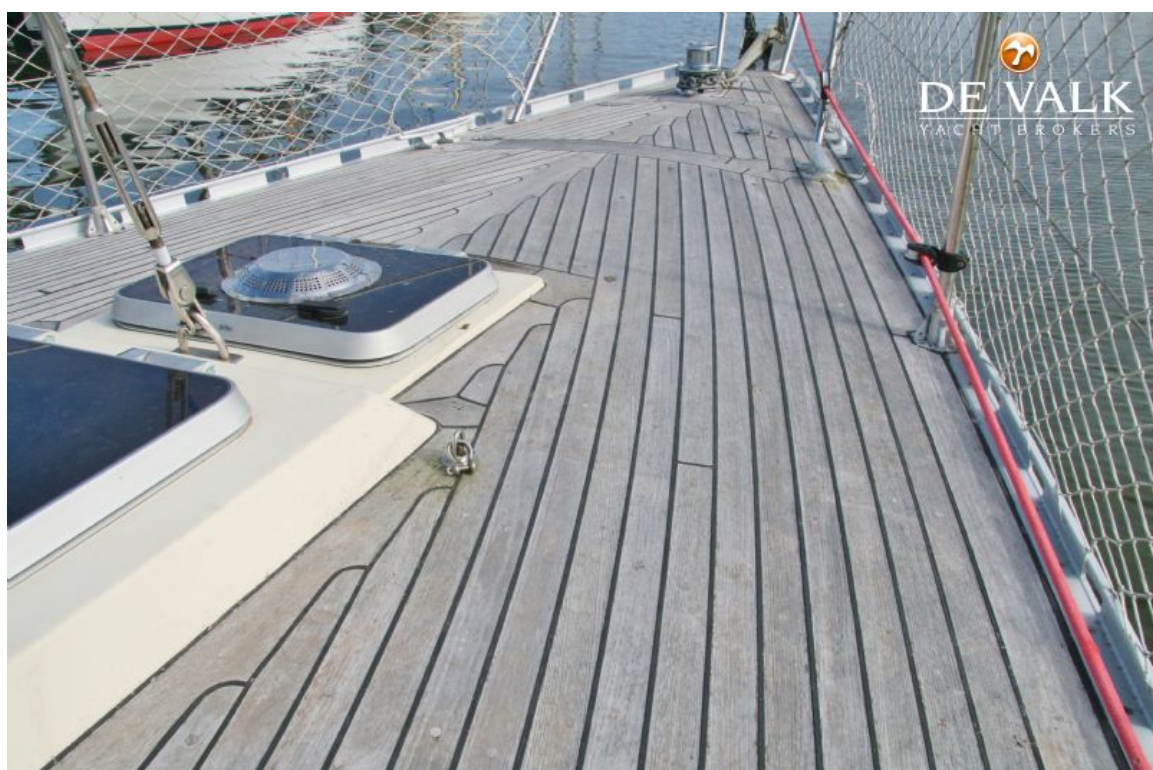


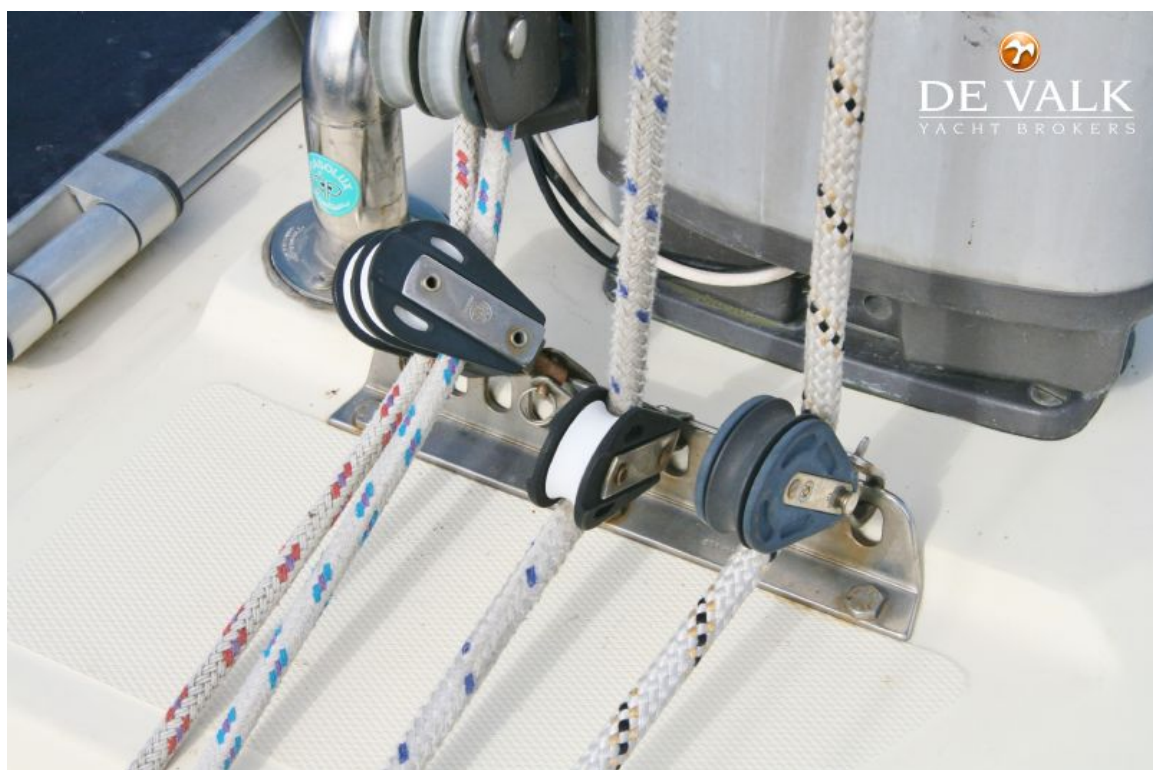
CONTEST 36S





CONTEST 36S













CONTEST 36S



CONTEST 36S



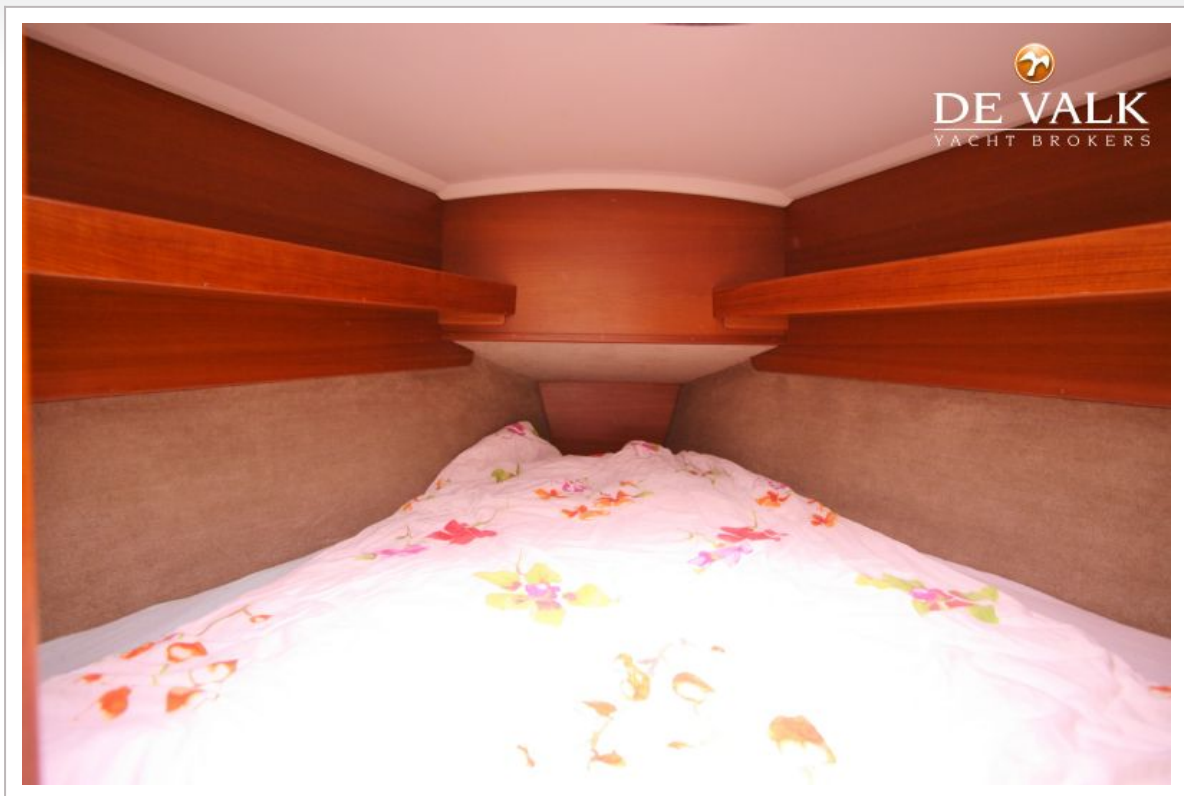
CONTEST 36S



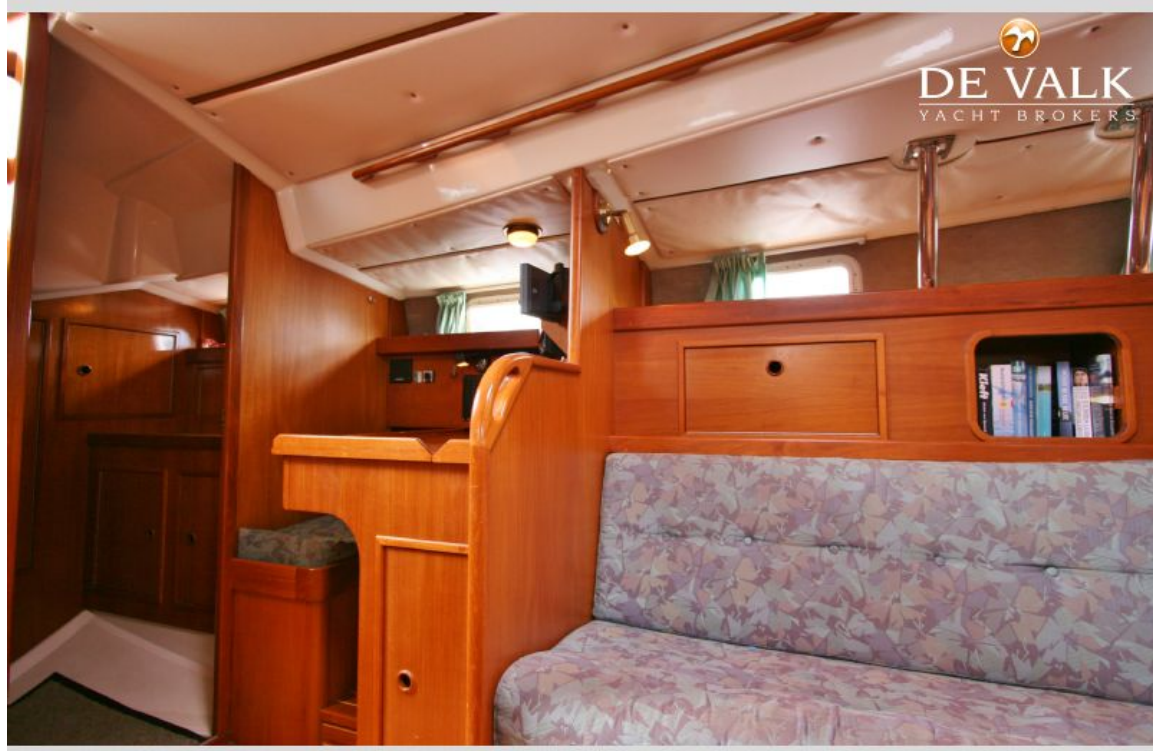
CONTEST 36S







CONTEST 36S





CONTEST 36S

