



DE VALK
YACHT BROKERS



OUTBORN 40



DE VALK
YACHT BROKERS

BROKERAGE | CHARTER | BERTHS | FINANCE | INSURANCE | YACHT MANAGEMENT

OUTBORN 40

BROKER'S COMMENTS

This good quality Outborn 40 sailing yacht is designed by the Famous Peter Rommel. This Outborn 40 is well equipped boat for long voyages, she has good sea keeping capabilities and sailing performance. On this Outborn 40 many major items have been renewed the last few years (like new painted hull, mast and deck, new Yanmar engine). But she has a keel problem (costs approx. E.15.000,-). She can be viewed at our sales harbour in Hindeloopen.

Tjerk Bouma

SPECIFICATIONS

Dimensions	11.90 x 3.97 x 2.01 (m)	Builder	Conrad Poland
Built	1988	Cabins	2
Material	GRP	Berths	7
Engine(s)	1 x Yanmar 3JH5E diesel	Hp/Kw	40.00 (hp), 29.40 (kw)
Asking price	sold (VAT)	Lying	at sales office

CONTACT

Sales office	De Valk Hindeloopen B.V.	Telephone	+31 514 52 40 00
Address	Oosterstrand 1 8713 JS Hindeloopen NL	E-mail	hindeloopen@devalk.nl

DISCLAIMER

These particulars are given in good faith as supplied but cannot be guaranteed.



GENERAL

Model	OUTBORN 40
Type	sailing yacht
LOA (m)	11,90
Beam (m)	3,97
Draft (m)	2,01
Headroom (m)	2,00
Year built	1988
Builder	Conrad Poland
Country	Poland
Designer	Peter Rommel
Displacement (t)	12
Ballast (tonnes)	lead 3,5
Hull material	GRP
Hull colour	blue
Hull shape	round-bilged
Keel type	fin keel
Superstructure material	GRP
Deck material	GRP
Deck finish	non-skid paint
Superstructure deck finish	non-skid paint
Cockpit deck finish	teak
Dorades	5x
Window frame	aluminium
Window material	tempered glass Perspex and
Deckhatch	4x Goiot
Insulation	airfoil Sandwich
Radar arch	non collapsible
Fuel tank (litre)	250
Level indicator (fuel tank)	yes
Freshwater tank (litre)	GRP 2 tanks - total 700



Wheel steering	cable steering
Emergency tiller	yes
More info on hull	yes

ACCOMMODATION

Cabins	2
Berths	7
Interior	teak
Floor	teak and holly
Open cockpit	yes
Saloon	With four beds
Headroom saloon (m)	1,90 / 2,10
Heating	diesel ducted hot air Eberspacher
Chart table	yes
Aft Cabin	yes
Galley	yes
Countertop	Duropol White
Sink	emaille 2x white
Cooker	calor gas Eno - 3 burner
Oven	In cooker
Fridge	yes
Hot water system	
Water pressure system	electrical
Manual and/or foot pump	yes
Owners cabin	double bed
Bed length (m)	1,90/1,95
Wardrobe	hanging and shelves
Bathroom	shared
Toilet	Jabsco
Toilet system	manual
Wash basin	



Shower	separate
Guest cabin 1	bunk bed
Bed length (m)	2
Wardrobe	hanging and shelves

MACHINERY

No of engines	1
Make	Yanmar
Type	3JH5E
HP	40,00
kW	29,40
Fuel	diesel
Year installed	2010
Engine hours	131
Engine cooling system	freshwater heat exchanger
Drive	sail-drive
Engine controls	bowden cable
Exhaust	watercooled
Propeller type	fixed
Propeller blades	3
Manual bilge pump	yes
Electric bilge pump	yes
Electrical installation	12 /220
Batteries	5
Battery monitor	yes
Battery charger/inverter	Victron 12/1600/70
Shorepower	with cable

NAVIGATION

Compass	2x
Electric compass	VDO Logic - chart table



Depth sounder	Forward looking
Log	VDO
Windset	2x VDO
Repeater	By chart table
VHF	Sailor Compact VHF RT2048
Autopilot	Autohelm ST6000
Radar	Vigil
GPS	Garmin; Map 421 outside / Map 130 inside
Weather receiver	yes
Loudhailer	yes

EQUIPMENT

Sprayhood	yes
Cockpit cover	yes
Cockpit cushions	yes
Cockpit table	yes
Boarding ladder	stainless steel 2x
Anchor	CQR Plough
Anchor chain	yes
Anchor 2	Stern anchor
Davits	stainless steel
Davits controls	manual
Sea railing	wire Stainless steel
Pushpit	yes
Pulpit	yes
Life raft	container
Life raft (pers)	4
Lifebuoy	yes
Safety lines on deck	yes
Horn	electric
Fenders	yes



Mooring lines	yes
Spare parts	yes
Fire extinguisher	yes
Extinguisher in engine room	yes

RIGGING

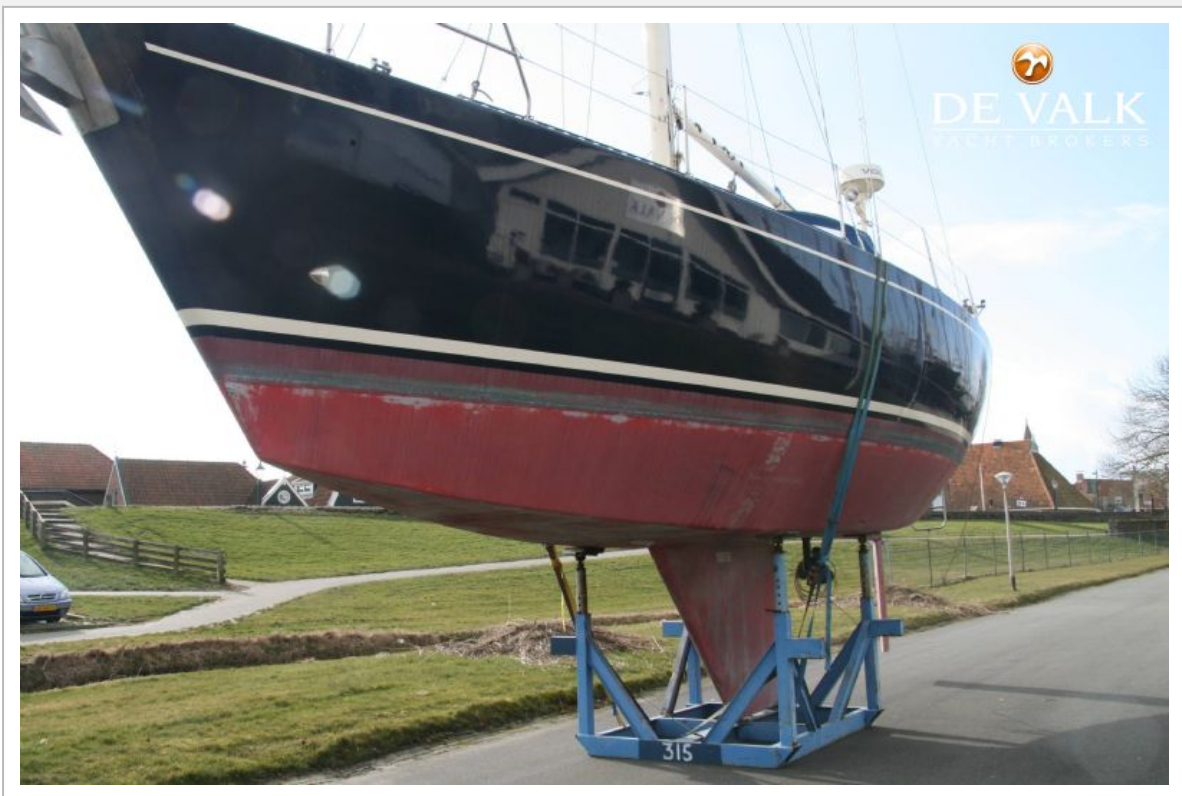
Rigging	sloop
Standing rigging	wire
Material mast	aluminium coated
Spreaders	2 pair - Back swapped
Keel stepped mast	yes
Mainsail	yes
Mainsail cover	yes
Genoa	With UV-ply
Genoa furler	Reckmann
Removable innerforestay	yes
Reefing System	slabreefing
Backstay adjuster	2x
Boomvang	tackle
Primary sheet winch	1x Meissner 28ST
Secondary sheet winch	2x Meissner 28ST - black - 2 speed
Halyard winches	2x Meissner 23ST - Black - all get to the cockpit
Reefing winch	Under the boom
Extra info	Steps at the bottom of mast



OUTBORN 40



OUTBORN 40



OUTBORN 40



OUTBORN 40



OUTBORN 40



OUTBORN 40



OUTBORN 40



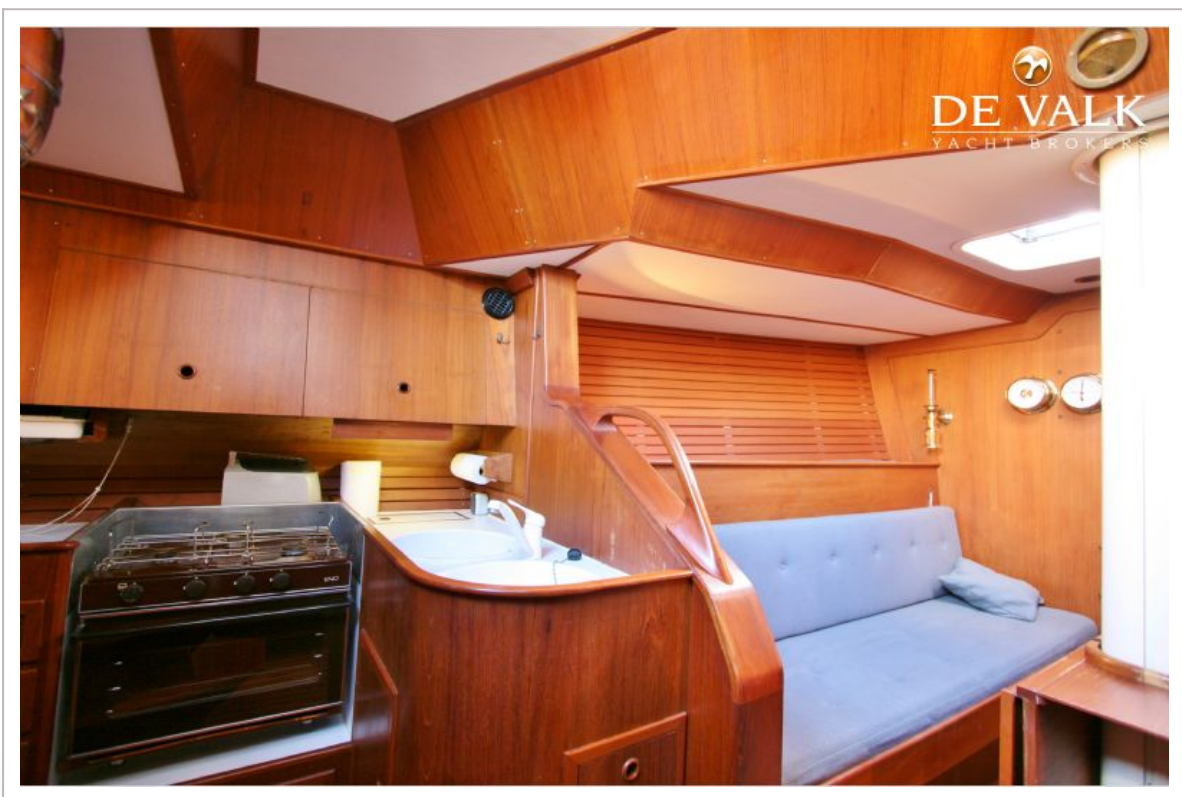
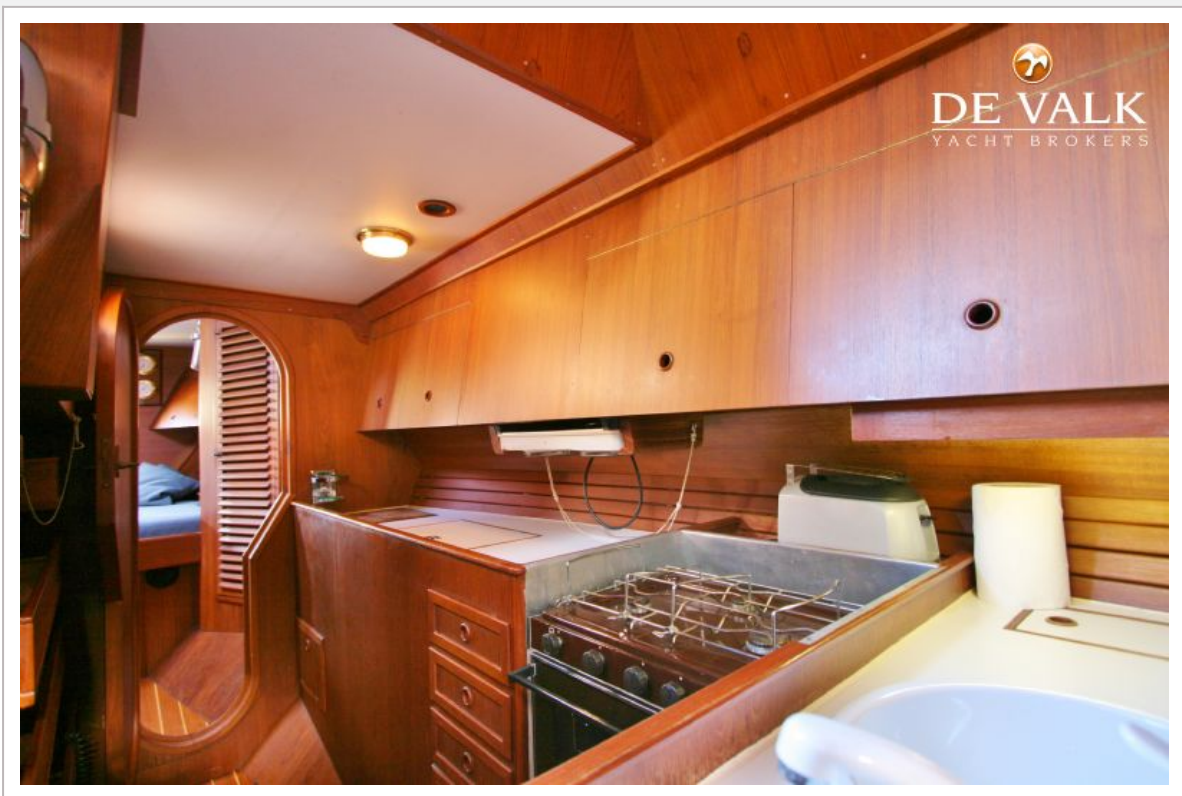
OUTBORN 40



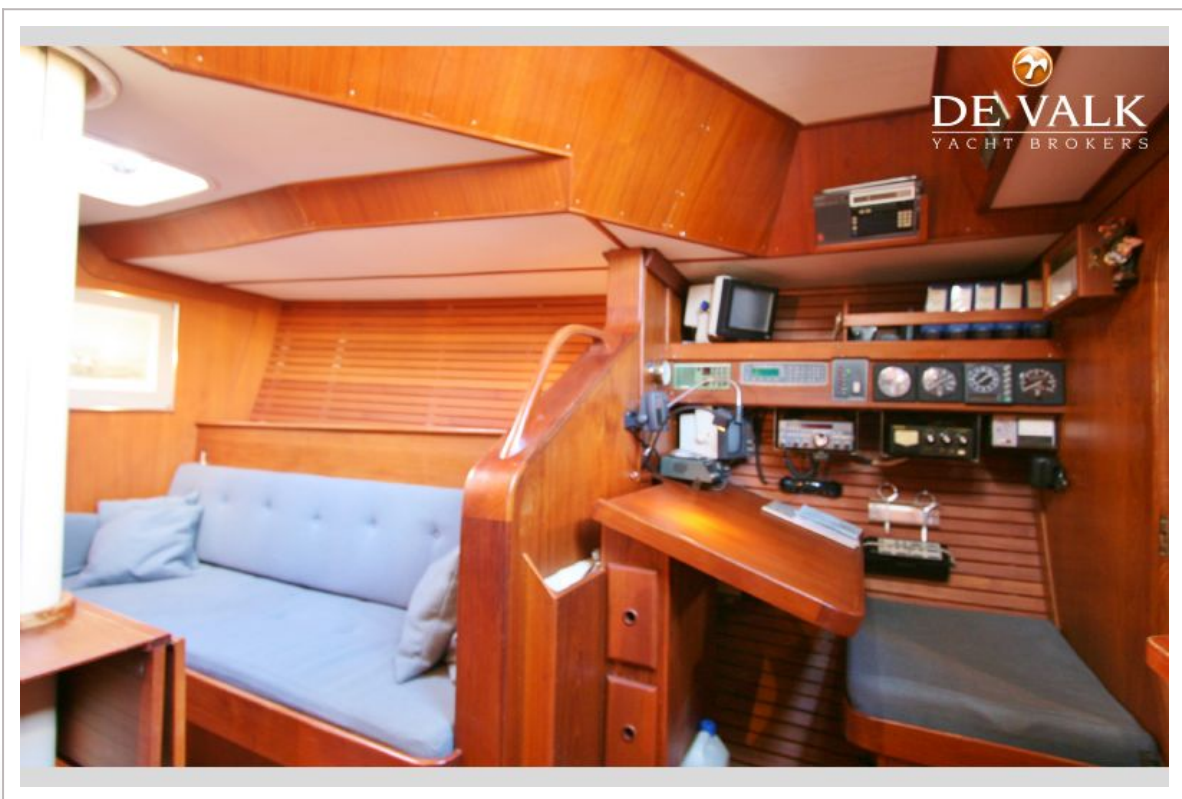
OUTBORN 40



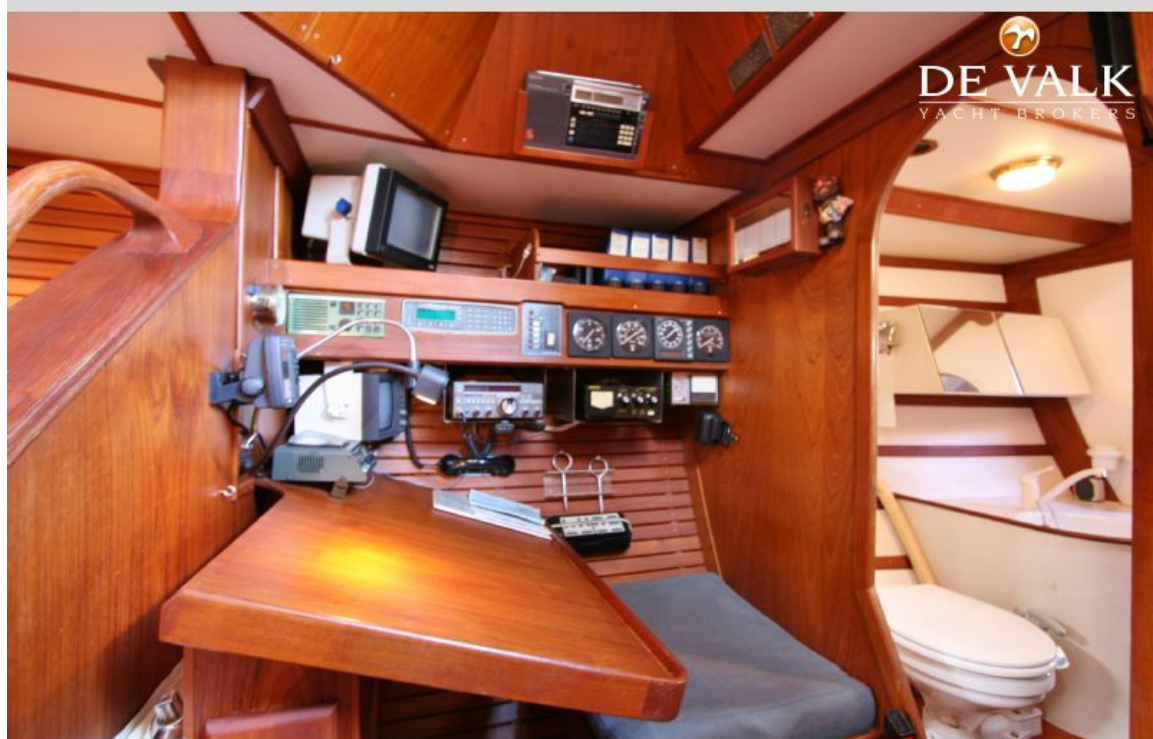
OUTBORN 40



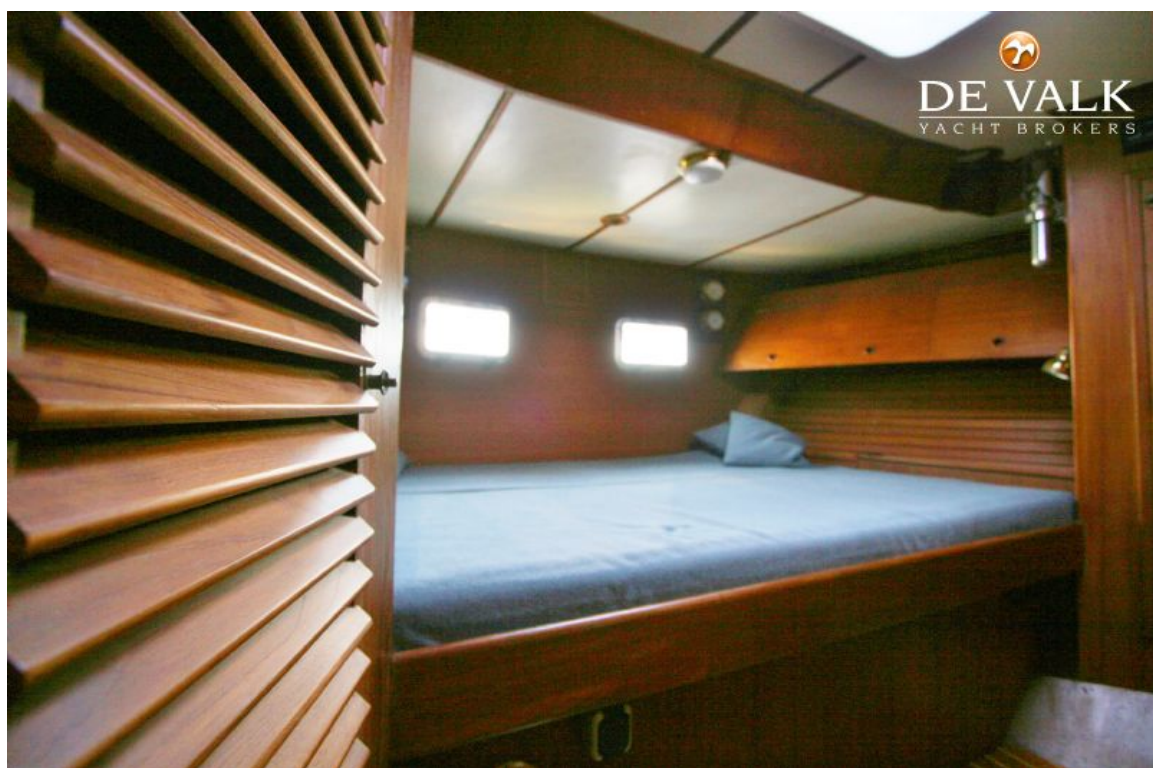
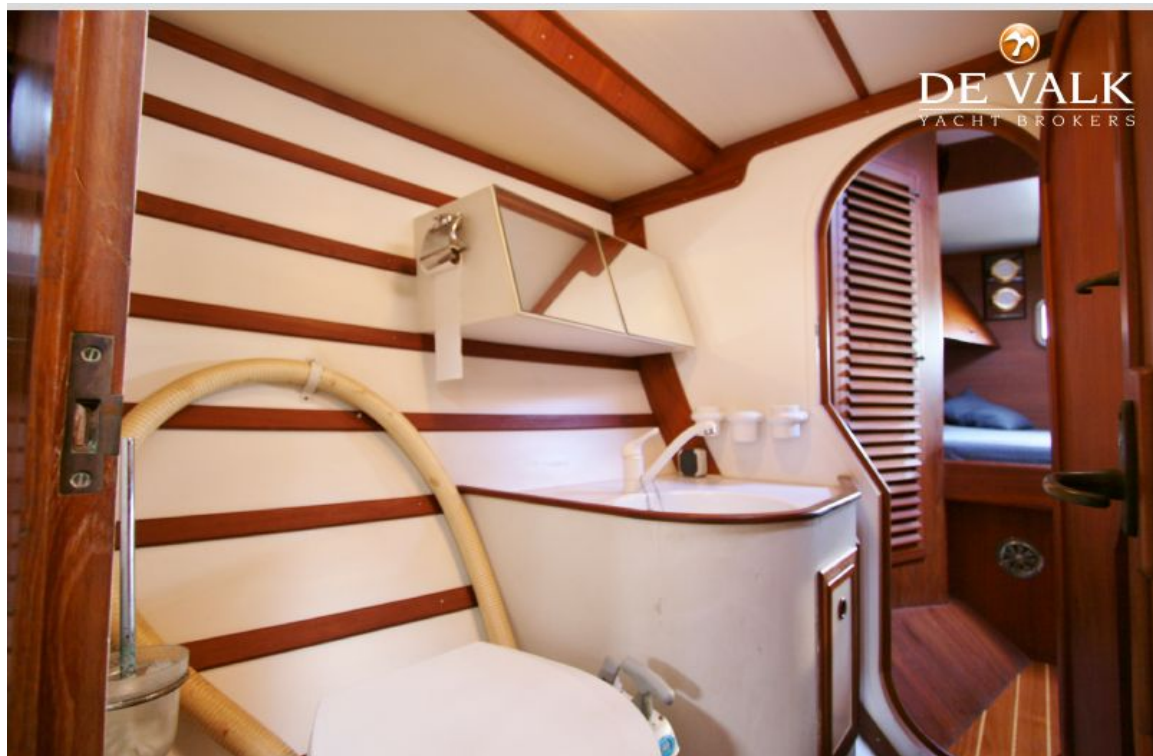
OUTBORN 40



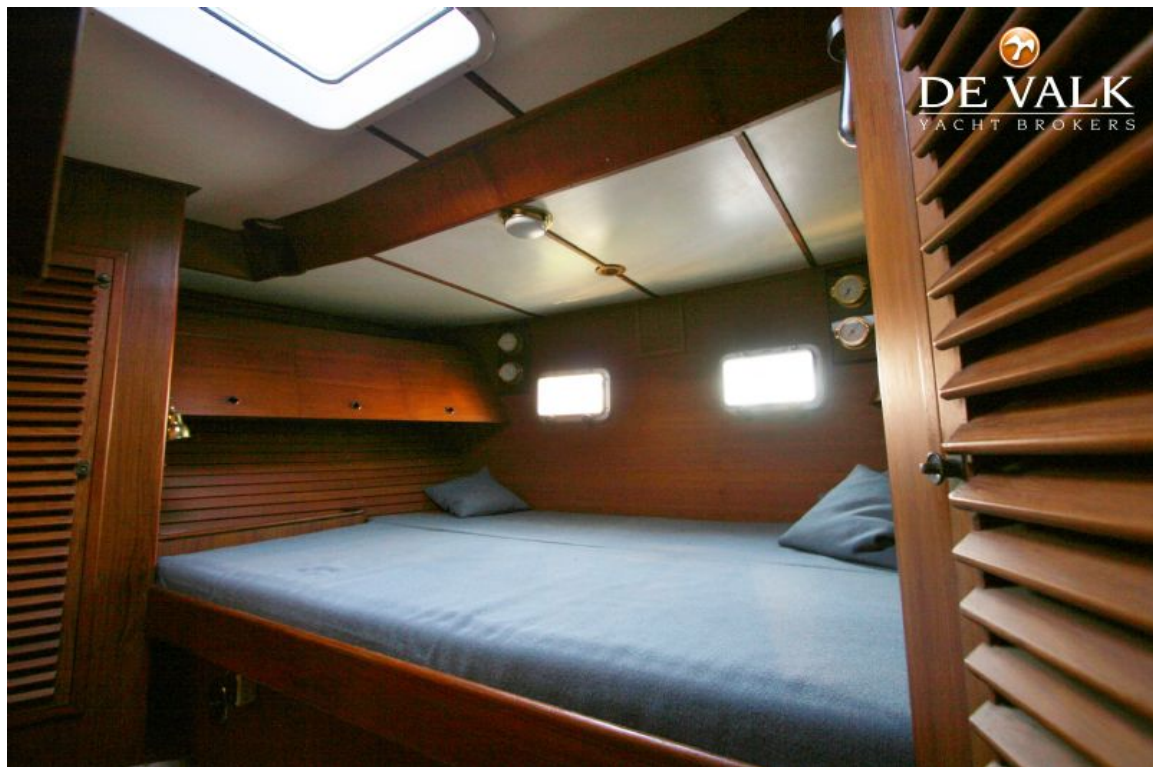
OUTBORN 40



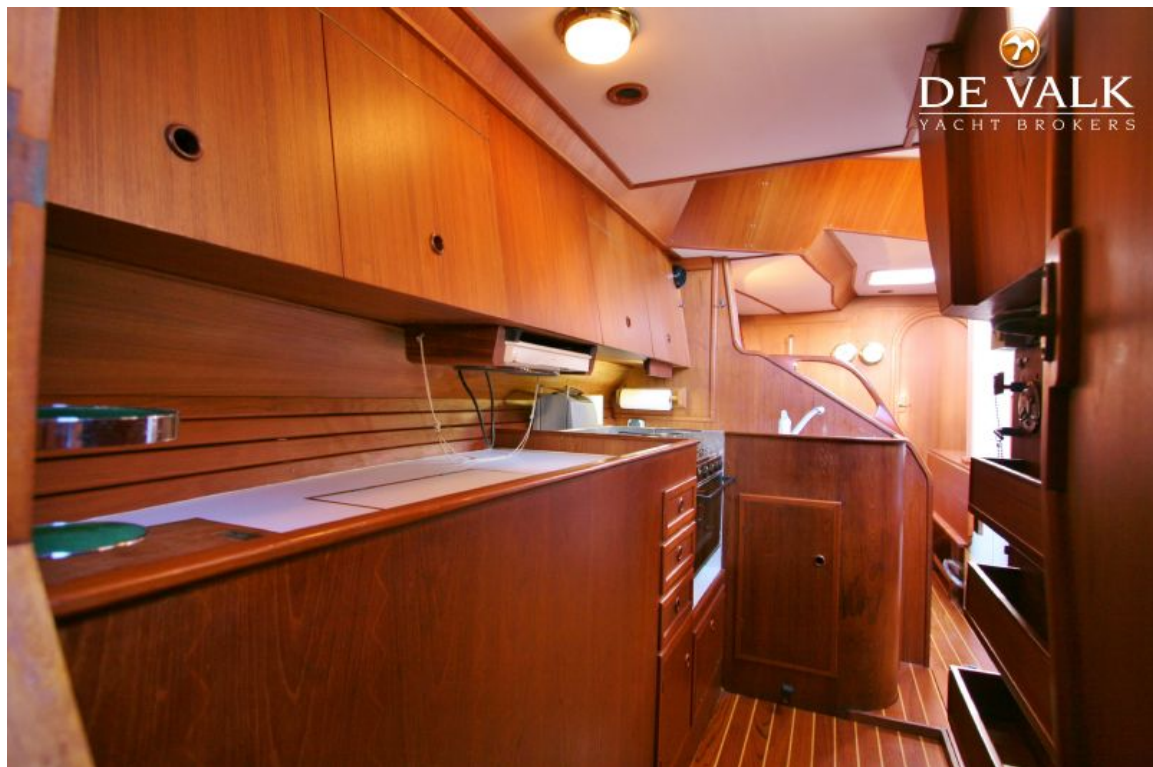
OUTBORN 40



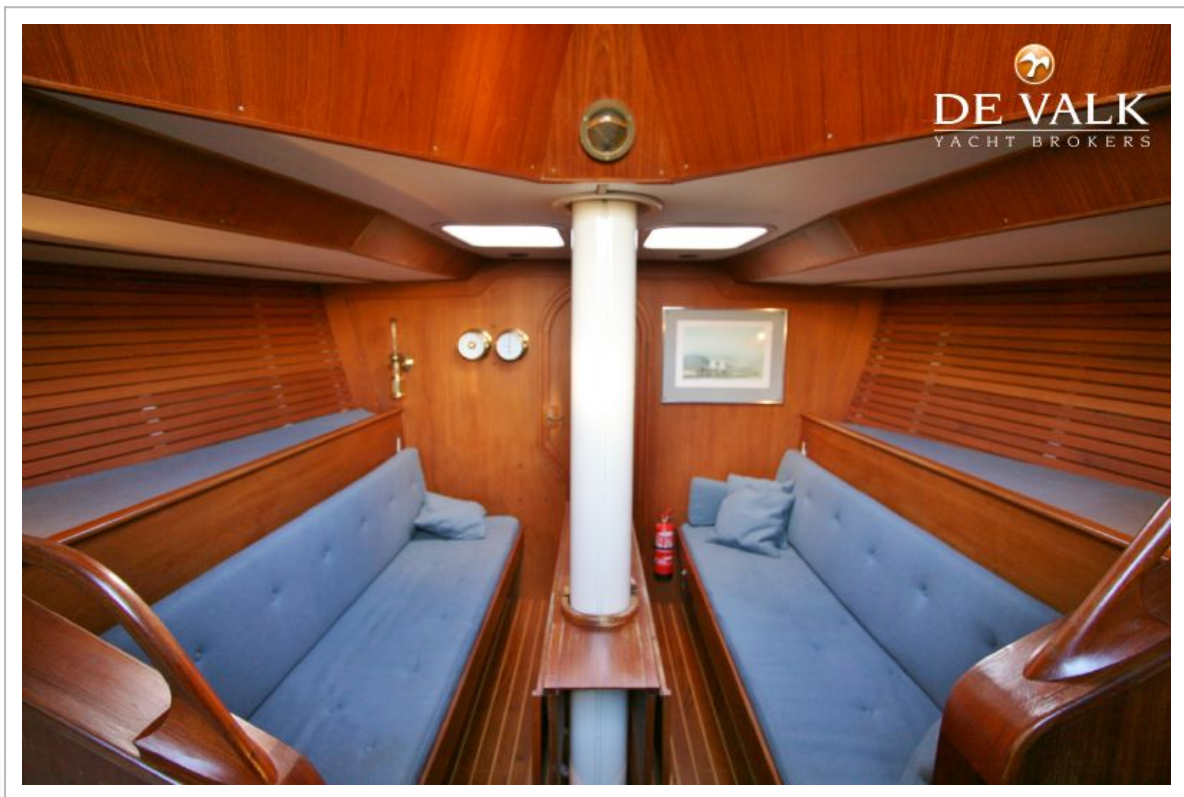
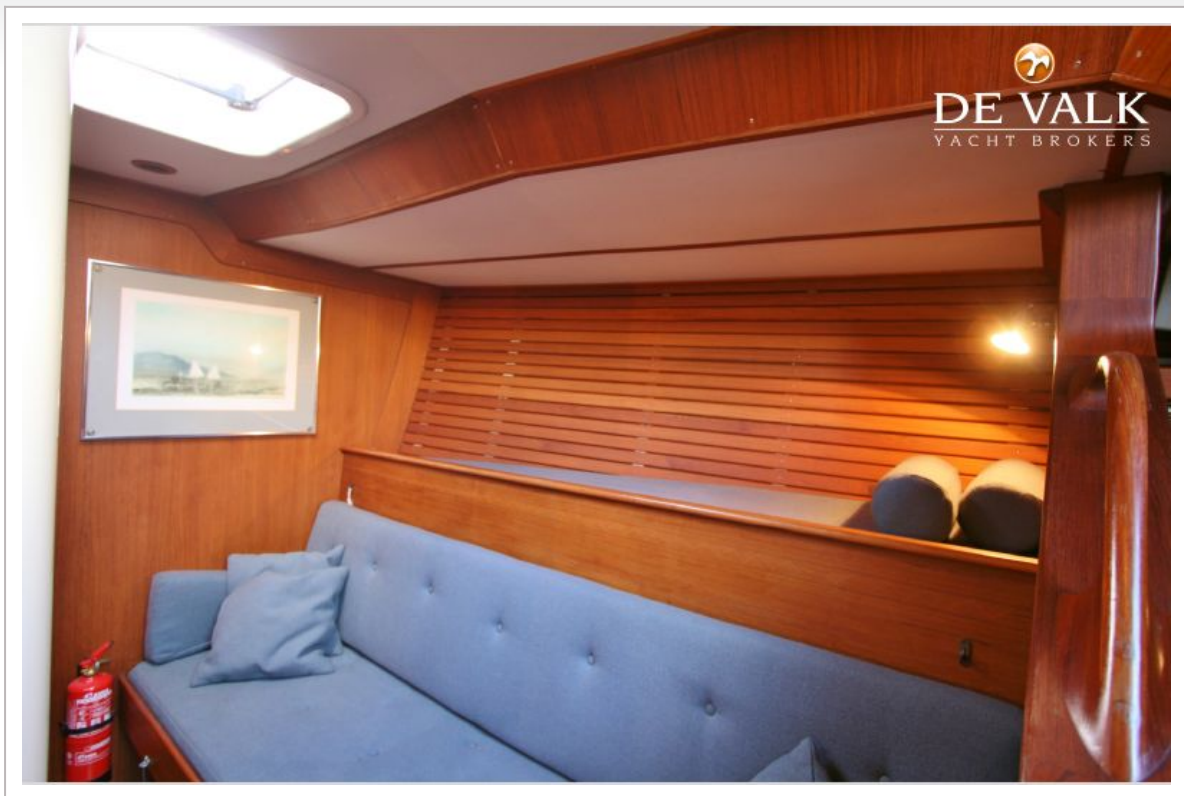
OUTBORN 40



OUTBORN 40



OUTBORN 40



OUTBORN 40

