



DE VALK
YACHT BROKERS



FREEDOM 38



DE VALK
YACHT BROKERS

BROKER'S COMMENTS

Freedom Yachts has woven the best ideas of interior layout and the modern ideas of rigging into an unique series of yachts. The Freedom 38 has Large accommodation below decks with ample storage space and headroom. Large uncluttered cockpit with easy access to the saloon. Simplicity, safety and comfort in handling are the predominant features in the Freedom concept. Comfort in handling because two electric winches in the cockpit operate all sheets and halyards and she is fitted with a self-tacking jib.

<https://en.bva-auctions.com/auction/index/27295>

Henk Sijbranda

SPECIFICATIONS

Dimensions	11.58 x 3.81 x 1.48 (m)	Builder	Tillotson Pearson for Freedom Yachts
Built	1990	Cabins	2
Material	GRP	Berths	6
Engine(s)	1 x Yanmar 3YM30 diesel	Hp/Kw	40.82 (hp), 30.00 (kw)
Asking price	sold (VAT)	Lying	at sales office

CONTACT

Sales office	De Valk Hindeloopen B.V.	Telephone	+31 514 52 40 00
Address	Oosterstrand 1 8713 JS Hindeloopen NL	E-mail	hindeloopen@devalk.nl

DISCLAIMER

These particulars are given in good faith as supplied but cannot be guaranteed.



GENERAL

Model	FREEDOM 38
Type	sailing yacht
LOA (m)	11,58
LWL (m)	9,33
Beam (m)	3,81
Draft (m)	1,48
Air draft (m)	19,00
Headroom (m)	2,10
Year built	1990
Builder	Tillotson Pearson for Freedom Yachts
Country	U.S.A.
Designer	Gary Mull
Displacement (t)	6,078
Ballast (tonnes)	lead 2,508
Hull material	GRP
Hull colour	white
Hull shape	round-bilged
Keel type	fin keel
Superstructure material	GRP
Rubbing strake	stainless steel
Deck material	GRP
Deck finish	non-skid moulded in
Superstructure deck finish	non-skid moulded in
Cockpit deck finish	non-skid moulded in
Antifouling (year)	2014
Window frame	aluminium
Window material	tempered glass
Deckhatch	3x
Insulation	foam
Radar arch	non collapsible



Fuel tank (litre)	stainless steel 140
Level indicator (fuel tank)	on the tank
Freshwater tank (litre)	polyethylene 242
Blackwater tank (litre)	stainless steel
Blackwater tank extraction	deck extraction + uw line
Wheel steering	rack & pinion
Emergency tiller	yes

ACCOMMODATION

Cabins	2
Berths	6
Interior	mahogany
Floor	teak and holly
Open cockpit	yes
Saloon	yes
Headroom saloon (m)	2+
Heating	diesel ducted hot air Webasto
Chart table	yes
Galley	yes
Countertop	plastic
Sink	stainless steel 2x
Cooker	calor gas Force 10 Marine - 3 burner
Oven	In cooker
Gas alarm	yes
Fridge	IMI adler Barbour
Hot water system	by engine
Water pressure system	electrical
Owners cabin	double bed
Bed length (m)	2+
Wardrobe	hanging/drawers/shelves
Bathroom	yes



Guest cabin 1	double bed
Bed length (m)	2+
Wardrobe	hanging/drawers/shelves
Bathroom	shared
Toilet	yes
Toilet system	manual Jabsco
Wash basin	yes
Shower	yes

MACHINERY

No of engines	1
Make	Yanmar
Type	3YM30
HP	40,82
kW	30,00
Fuel	diesel
Year installed	2009
Maximum speed (kn)	7,4
Engine hours	400
Engine cooling system	freshwater heat exchanger
Drive	shaft
Engine controls	bowden cable
Gearbox	mechanical
Exhaust	watercooled
Propeller type	folding
Propeller blades	3
Propeller shaft material	stainless steel
Manual bilge pump	yes
Electric bilge pump	yes
Start battery	1x 110 amp - 2015
Service battery	3x 270 amp - 2015



Battery charger	yes
Inverter	yes
Shorepower	with cable

NAVIGATION

Compass	Suuto pedestal compass
Depth sounder	In Nexus Sea Data NX
Log	In Nexus Sea Data NX
Windset	yes
VHF	Icom IC-M411
Autopilot	Raymarine ST6001
Radar	does not work Raytheon
GPS	Furuno GP-32
Navtex	Furuno Navtex NX-300

EQUIPMENT

Sprayhood with grab rail	2016
Cockpit table	yes
Bathing platform	yes
Boarding ladder	stainless steel
Deck shower	yes
Anchor	CQR Plough
Anchor chain	yes
Windlass	electrical Ideal
Capstan	yes
Sea railing	wire Stainless steel
Grab rail (superstructure)	teak
Railing side opening gates	yes
Pushpit	yes
Pulpit	yes
Lifebuoy	yes



Radar reflector	yes
Fenders	yes
Mooring lines	yes
Spare parts	Engine
Clock - barometer	yes
Fire extinguisher	yes

RIGGING

Rigging	sloop
Standing rigging	Unstayed
Material mast	carbon
Keel stepped mast	yes
Mainsail	2009
Mainsail cover	yes
Fully battened mainsail	yes
Jib	yes
Spinnaker	Heavy weather Spi
Self tacking jib installation	With boom in Jib
Reefing System	quick-one-line-reefing
Boomvang	gasspring
Multifunctional winches	halyard/sheet winches 2x Barient 27 - electric
Spi-pole	aluminium Symmetrically on pulpit





BROKERAGE | CHARTER | BERTHS | FINANCE | INSURANCE | YACHT MANAGEMENT



**This yacht will be auctioned,
for further details please visit www.devalk.nl**

**Dit schip zal worden geveild,
voor meer informatie gaat u naar www.devalk.nl**

**Dieses Schiff wird versteigert,
für weitere informationen besuchen Sie www.devalk.nl**

WWW.DEVALK.NL



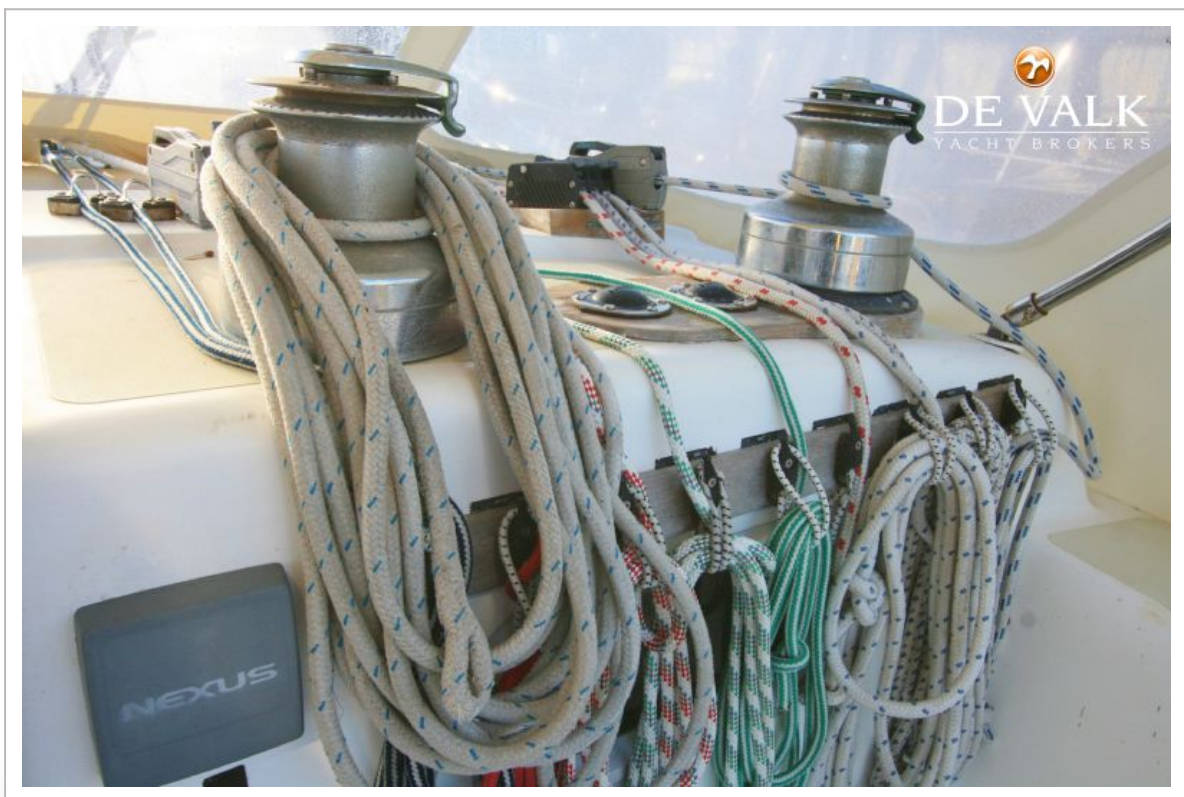
FREEDOM 38



FREEDOM 38







FREEDOM 38



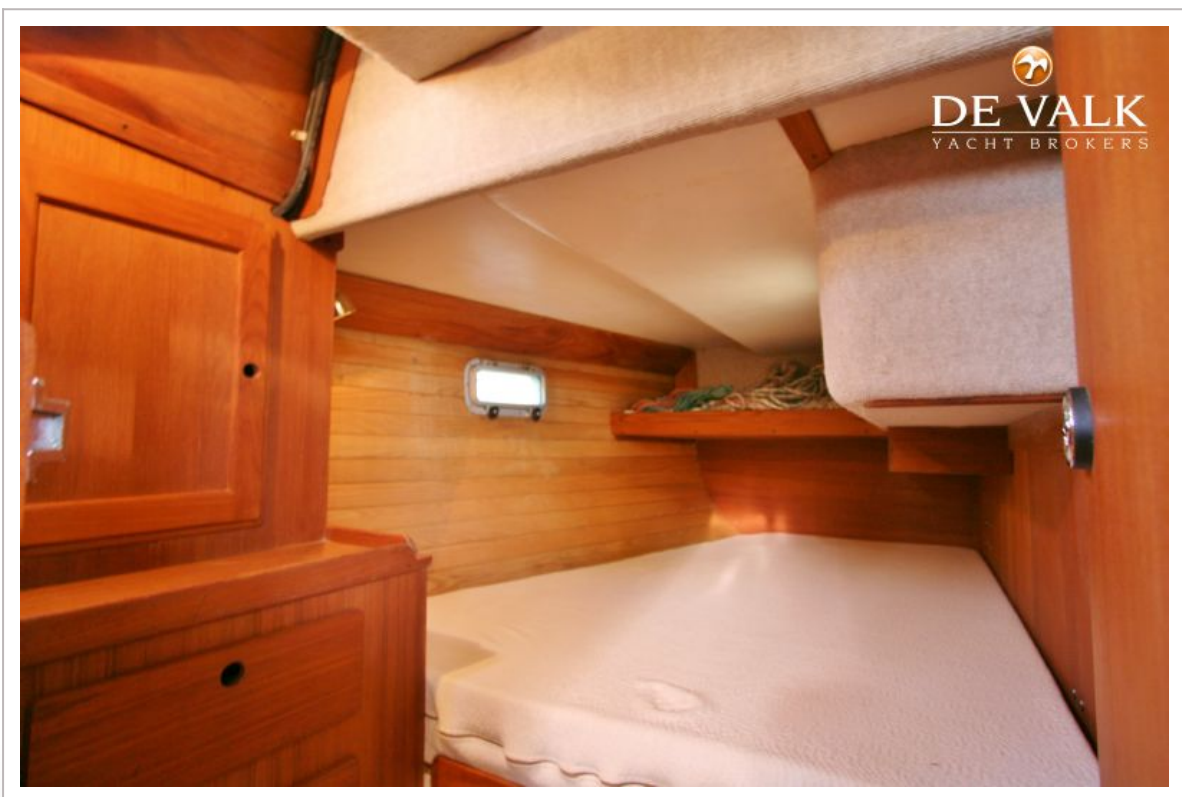




FREEDOM 38



FREEDOM 38



FREEDOM 38



FREEDOM 38



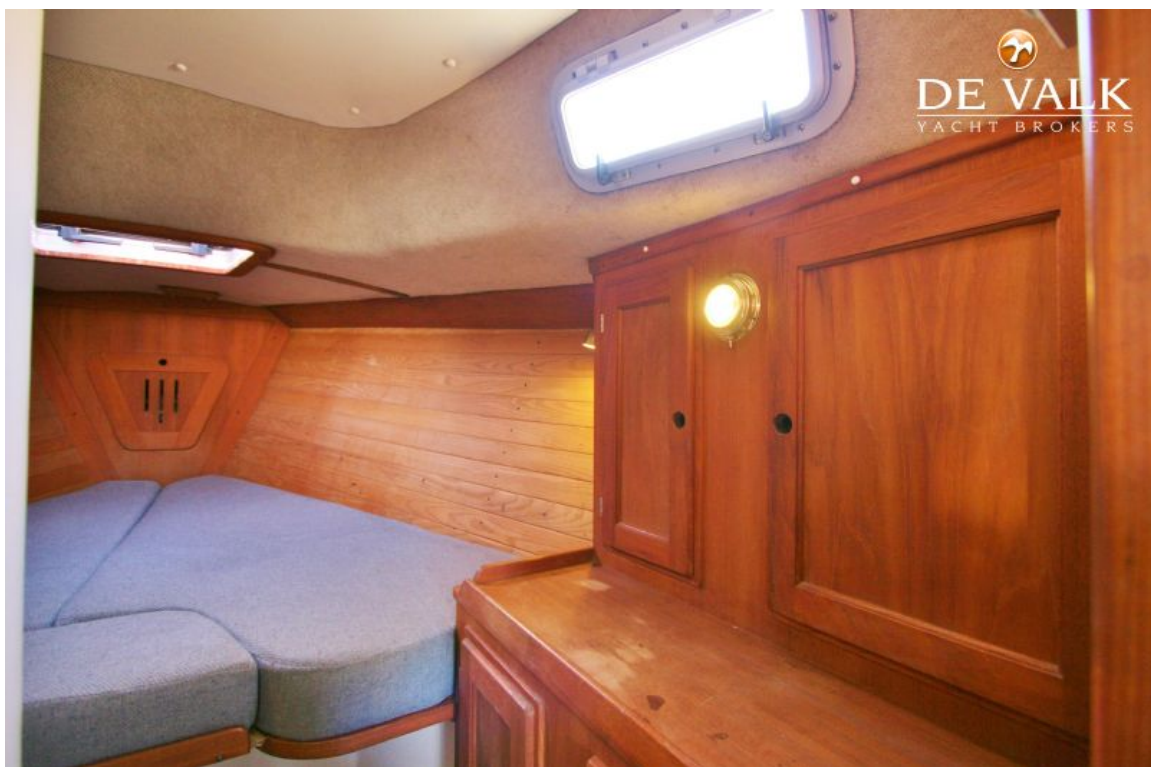
FREEDOM 38



FREEDOM 38



FREEDOM 38



FREEDOM 38

