



## MENORQUIN 55

# MENORQUIN 55

## BROKER'S COMMENTS

The Menorquin 55 is a robust and safe built vessel thanks to her semi-displacement hull which provides the boat with maximum stability, so that the sea can be enjoyed peacefully. The twin engines give her maximum security and reliability at all times. This Menorquin has low enginehours is well equipped en perfectly maintained. She is located in our sales marina in Hindeloopen.

*Henk Sijbranda*

## SPECIFICATIONS

<b>Dimensions</b>	10.30 x 3.51 x 1.10 (m)	<b>Builder</b>	Astilleros Menorca S.L.
<b>Built</b>	1998	<b>Cabins</b>	1
<b>Material</b>	GRP	<b>Berths</b>	4
<b>Engine(s)</b>	2 x Yanmar 4LT- HTE diesel	<b>Hp/Kw</b>	2 x 140.00 (hp), 102.90 (kw)
<b>Asking price</b>	sold (VAT )	<b>Lying</b>	contact Hindeloopen

## CONTACT

<b>Sales office</b>	De Valk Hindeloopen B.V.	<b>Telephone</b>	+31 514 52 40 00
<b>Address</b>	Oosterstrand 1 8713 JS Hindeloopen NL	<b>E-mail</b>	hindeloopen@devalk.nl

## DISCLAIMER

These particulars are given in good faith as supplied but cannot be guaranteed.



## GENERAL

Model	MENORQUIN 55
Type	motor yacht
LOA (m)	10,30
Beam (m)	3,51
Draft (m)	1,10
Headroom (m)	1,85
Year built	1998
Builder	Astilleros Menorca S.L.
Country	Spain
Displacement (t)	8
CE norm	B
Hull material	GRP
Hull colour	white
Hull shape	round-bilged
Superstructure material	GRP
Deck material	GRP
Deck finish	non-skid moulded in
Superstructure deck finish	non-skid moulded in
Cockpit deck finish	teak
Window frame	aluminium
Deckhatch	2x Bomar
Portholes	aluminium
Fuel tank (litre)	aluminium 2x 315L
Level indicator (fuel tank)	yes
Freshwater tank (litre)	350L
Level indicator (freshwater)	yes
Wheel steering	hydraulic

## ACCOMMODATION

Cabins	1
--------	---



Berths	4
Interior	mahogany
Open cockpit	yes
Pilot house	yes
Saloon	yes
Headroom saloon (m)	1,90
Dinette	yes
Dinette to convert into berth	yes
Galley	yes
Sink	stainless steel Double
Cooker	electric 2 burner - Teka
Microwave	Teka
Fridge	Vitrifrigo with freezer compartment
Hot water system	by engine Boiler - 45L
Water pressure system	electrical
Owners cabin	v-bed
Bed length (m)	1,95
Wardrobe	drawers and shelves
Bathroom	shared
Toilet	Jabsco
Toilet system	manual
Wash basin	yes

## MACHINERY

No of engines	2
Make	Yanmar
Type	4LT- HTE
HP	140,00
kW	102,90
Fuel	diesel
Year installed	1998



Maximum speed (kn)	14
Cruising speed (kn)	7
Engine hours	424
Engine cooling system	freshwater heat exchanger
Drive	shaft
Engine controls	bowden cable Ultraflex
Gearbox	mechanical Kanzaki KM5A
Exhaust	watercooled
Propeller type	fixed
Propeller blades	4
Propeller shaft material	stainless steel
Shaft lubrication	water Stuffing Box
Electric bilge pump	2x
Electrical installation	12 and 220 V
Batteries	yes
Battery charger	Mastervolt Chargemaster 12/25-3
Inverter	Mastervolt Mass 12/2000
Shorepower	with cable

## NAVIGATION

Electric compass	VDO Logic Compass
Depth sounder/log	VDO Logic Log/Depth
VHF	Telemobile GX - 1250 - S
Autopilot	VDO Logic Pilot
Rudder angle indicator	In autopilot
Plotter/GPS	VDO Logic Map 10

## EQUIPMENT

Fixed windscreen	yes
Cockpit cover	yes
Cockpit cushions	yes



Bathing platform	yes
Boarding ladder	stainless steel
Transom door	yes
Gangway	Besenzoni
Deck shower	yes
Anchor	Bruce
Anchor chain	yes
Windlass	electrical Lofrans
Capstan	yes
Sea railing	stainless steel
Grab rail (superstructure)	stainless steel
Pushpit	yes
Pulpit	yes
Fenders	yes
Mooring lines	yes
Speakers in salon	yes
Clock - barometer	yes



# MENORQUIN 55





## MENORQUIN 55





# MENORQUIN 55



# MENORQUIN 55





# MENORQUIN 55



## MENORQUIN 55





## MENORQUIN 55



## MENORQUIN 55





# MENORQUIN 55

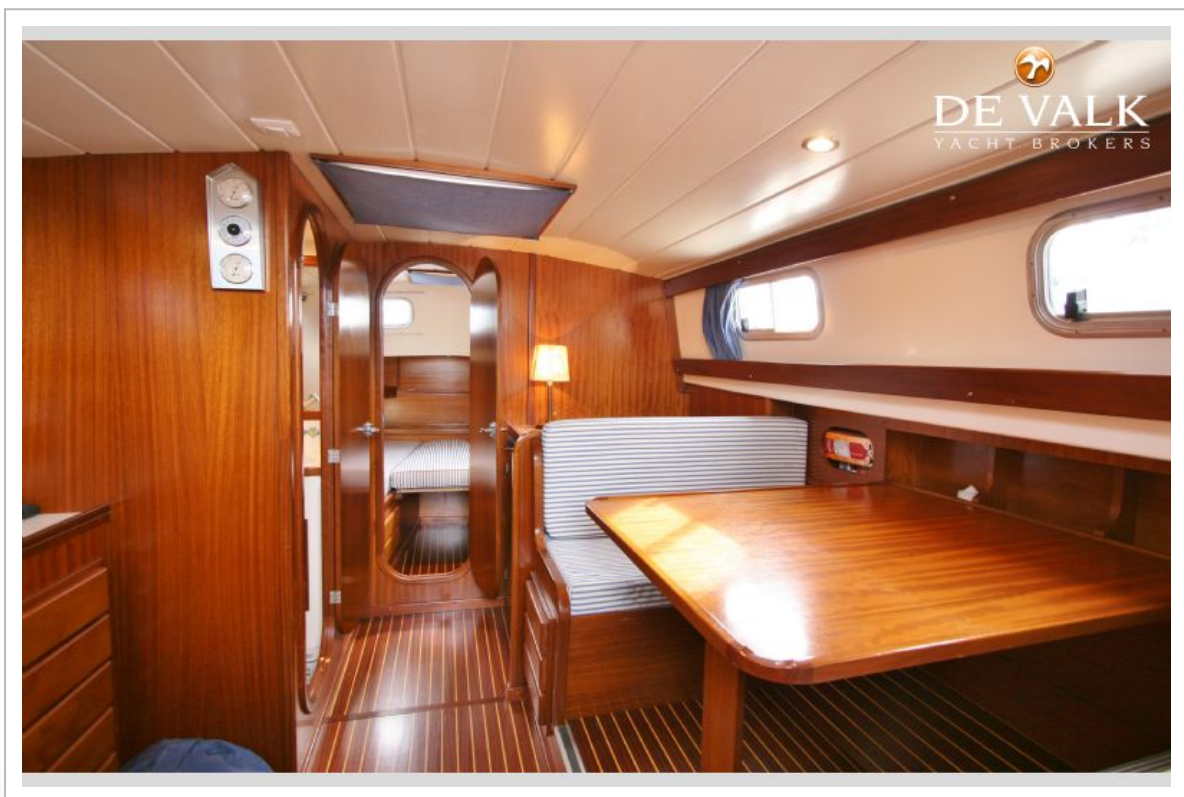


# MENORQUIN 55

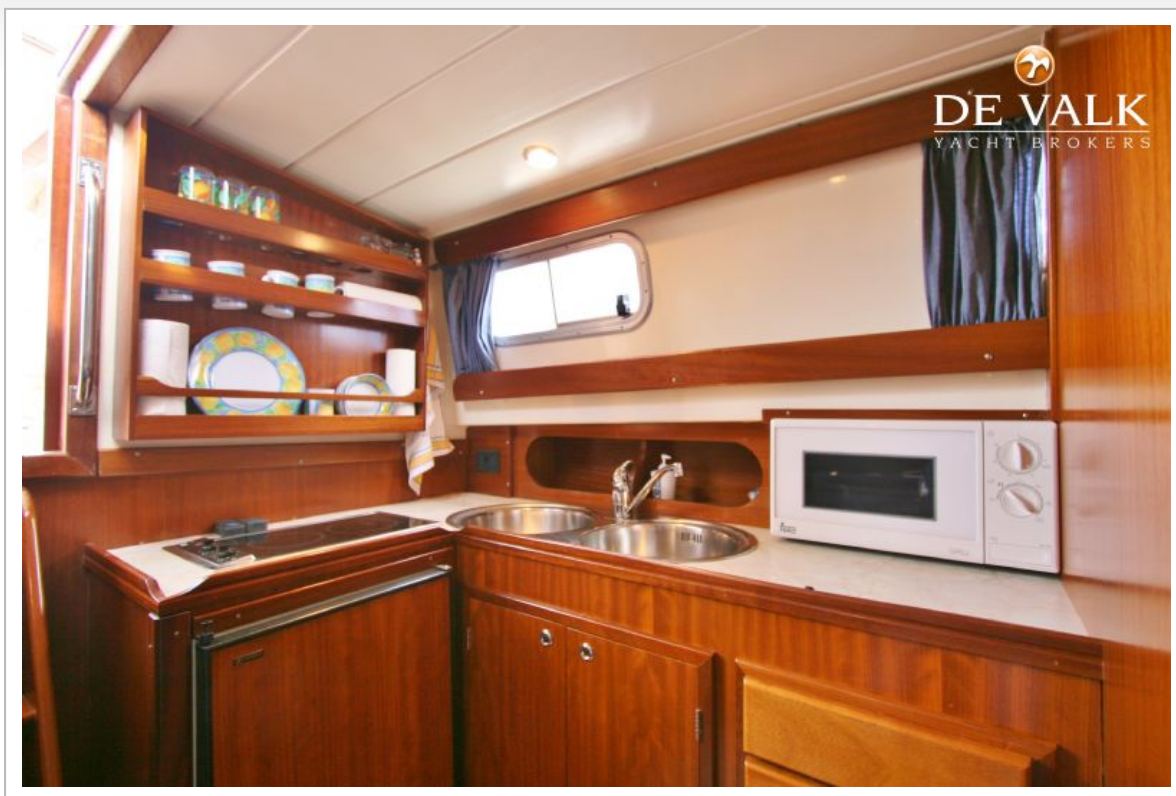




# MENORQUIN 55

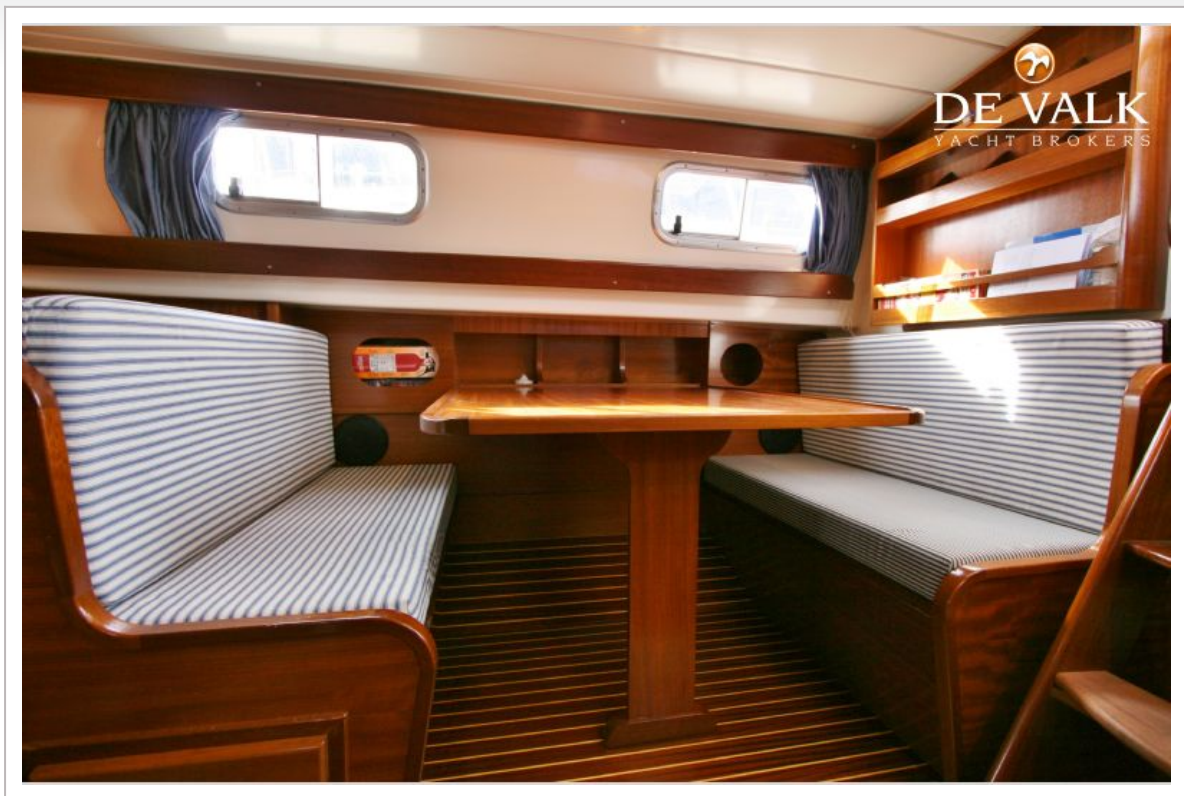


# MENORQUIN 55





# MENORQUIN 55

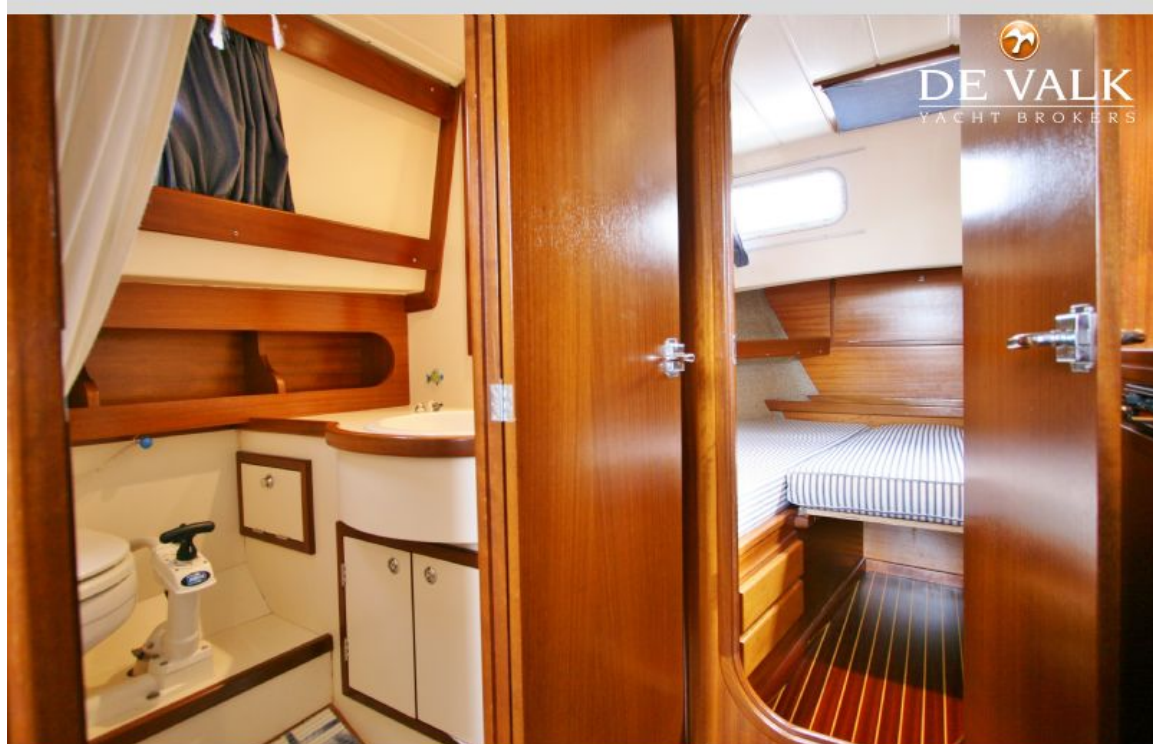


# MENORQUIN 55





# MENORQUIN 55



# MENORQUIN 55





# MENORQUIN 55

