



DE VALK
YACHT BROKERS



BENETEAU FIRST 47.7



DE VALK
YACHT BROKERS

BENETEAU FIRST 47.7

BROKER'S COMMENTS

Beneteau has been around for a long time. The Beneteau First range is the fastest of their line of cruisers with lots of cruising comfort and style. On the outside you'll find: clear decks, sleek lines, and an uncluttered cockpit. Below decks, much space for luxury staying on board with her 3 cabin-interior, spacious galley, chart table and saloon area. With the help of valuable options you can easily sail fast and safe to nice spots. She is waiting for your visit at De Valk Hindeloopen

Henk Sijbranda

SPECIFICATIONS

Dimensions	14.50 x 4.49 x 2.30 (m)	Builder	Beneteau SA
Built	2002	Cabins	3
Material	GRP	Berths	8
Engine(s)	1 x Volvo Penta TMD22P-C diesel	Hp/Kw	78.00 (hp), 57.33 (kw)
Asking price	sold (VAT)	Lying	contact Hindeloopen

CONTACT

Sales office	De Valk Hindeloopen B.V.	Telephone	+31 514 52 40 00
Address	Oosterstrand 1 8713 JS Hindeloopen NL	E-mail	hindeloopen@devalk.nl

DISCLAIMER

These particulars are given in good faith as supplied but cannot be guaranteed.



BENETEAU FIRST 47.7

GENERAL

Model	BENETEAU FIRST 47.7
Type	sailing yacht
LOA (m)	14,50
LWL (m)	12,60
Beam (m)	4,49
Draft (m)	2,30
Air draft (m)	21,00
Headroom (m)	2,00
Year built	2002
Builder	Beneteau SA
Country	France
Designer	Bruce Farr
Displacement (t)	11,5
Ballast (tonnes)	lead 3,8
CE norm	A
Hull material	GRP
Hull colour	white
Hull shape	round-bilged
Keel type	fin keel
Superstructure material	GRP
Deck material	GRP
Deck finish	teak
Superstructure deck finish	non-skid moulded in
Cockpit deck finish	teak
Dorades	2x
Window frame	aluminium
Window material	polycarbonate
Deckhatch	5x Lewmar
Fuel tank (litre)	250
Level indicator (fuel tank)	yes



Freshwater tank (litre)	polyethylene 620
Wheel steering	mechanical
Emergency tiller	yes

ACCOMMODATION

Cabins	3
Berths	8
Interior	cherry
Open cockpit	yes
Saloon	yes
Headroom saloon (m)	>2
Heating	diesel ducted hot air Eberspaecher D8L-C
Chart table	yes
Aft Cabin	2x
Galley	yes
Countertop	Duropal
Sink	stainless steel Double
Cooker	calor gas Eno
Oven	In cooker
Microwave	Panasonic
Fridge	Frigomatic
Hot water system	220V + engine Boiler Quick 42L
Water pressure system	electrical
Manual and/or foot pump	yes
Owners cabin	double bed Forward cabin
Bed length (m)	2 mtr
Wardrobe	hanging/drawers/shelves
Bathroom	en suite
Toilet	Jabsco
Toilet system	manual
Wash basin	yes



Shower	yes
Guest cabin 1	double bed
Bed length (m)	2 mtr.
Wardrobe	hanging/drawers/shelves
Guest cabin 2	double bed
Bed length (m)	2 mtr
Wardrobe	hanging/drawers/shelves
Bathroom	shared
Toilet	Jabsco
Toilet system	manual
Wash basin	yes
Shower	yes

MACHINERY

No of engines	1
Make	Volvo Penta
Type	TMD22P-C
HP	78,00
kW	57,33
Fuel	diesel
Year installed	2002
Maximum speed (kn)	7,5
Cruising speed (kn)	6
Engine cooling system	freshwater heat exchanger
Drive	shaft
Shaft seal	yes
Engine controls	bowden cable
Gearbox	mechanical
Bowthruster	electric Retractable - Max Power
Exhaust	watercooled
Propeller type	folding Maxprop



Propeller blades	3
Propeller shaft material	stainless steel
Shaft lubrication	water
Manual bilge pump	yes
Electric bilge pump	yes
Electrical installation	12 / 220 V
Start battery	1x 85 Ah
Service battery	3x 140 Ah
Battery monitor	yes
Battery charger	Sterling Power
Inverter	Mobitronic Type 8150-012 PP (defect)
Shorepower	with cable

NAVIGATION

Compass	Plastimo Olympic 135
Depth sounder/log	Raymarine ST60 TRIDATA and Raymarine I70
Windset	Raymarine ST60 WIND (defect)
Repeater	3x Raymarine ST60 MAXIVIEW on mast (1 x defect)
VHF	2x Shipmate RS8400
Autopilot	Raymarine ST6002 smart pilot
Plotter/GPS	Raymarine RC530

EQUIPMENT

Sprayhood	yes
Sprayhood with grab rail	yes
Boarding ladder	stainless steel
Deck shower	yes
Anchor	Bruce
Anchor chain	yes
Windlass	electrical Quick
Capstan	yes



Sea railing	wire Stainless steel
Grab rail (superstructure)	stainless steel
Railing side opening gates	yes
Pushpit	yes
Pulpit	yes
Radar reflector	yes
Fenders	yes
Mooring lines	yes
Radio-cd player	JVC
Cockpit speakers	yes
Speakers in salon	yes

RIGGING

Rigging	sloop
Standing rigging	wire
Brand mast	Sparcraft
Material mast	aluminium
Spreaders	3 pair
Keel stepped mast	yes
Mainsail	Pink sails, 2016 New!
Mainsail cover	Yes
Battcars	Facnor F10
Fully battened mainsail	Yes
High aspect	Furling
Genoa furler	Harken MKIV 3
Gennaker	Penna
Spinnaker	Sobstad
Reefing System	quick-one-line-reefing
Backstay adjuster	mechanical
Boomvang	gasspring
Secondary sheet winch	2x Lewmar 48



Genoa sheetwinches

2x Lewmar 58

Halyard winches

2x Lewmar 44

Gennaker pole

carbon



BENETEAU FIRST 47.7



BENETEAU FIRST 47.7



BENETEAU FIRST 47.7



BENETEAU FIRST 47.7



BENETEAU FIRST 47.7



BENETEAU FIRST 47.7



BENETEAU FIRST 47.7



BENETEAU FIRST 47.7



BENETEAU FIRST 47.7



BENETEAU FIRST 47.7



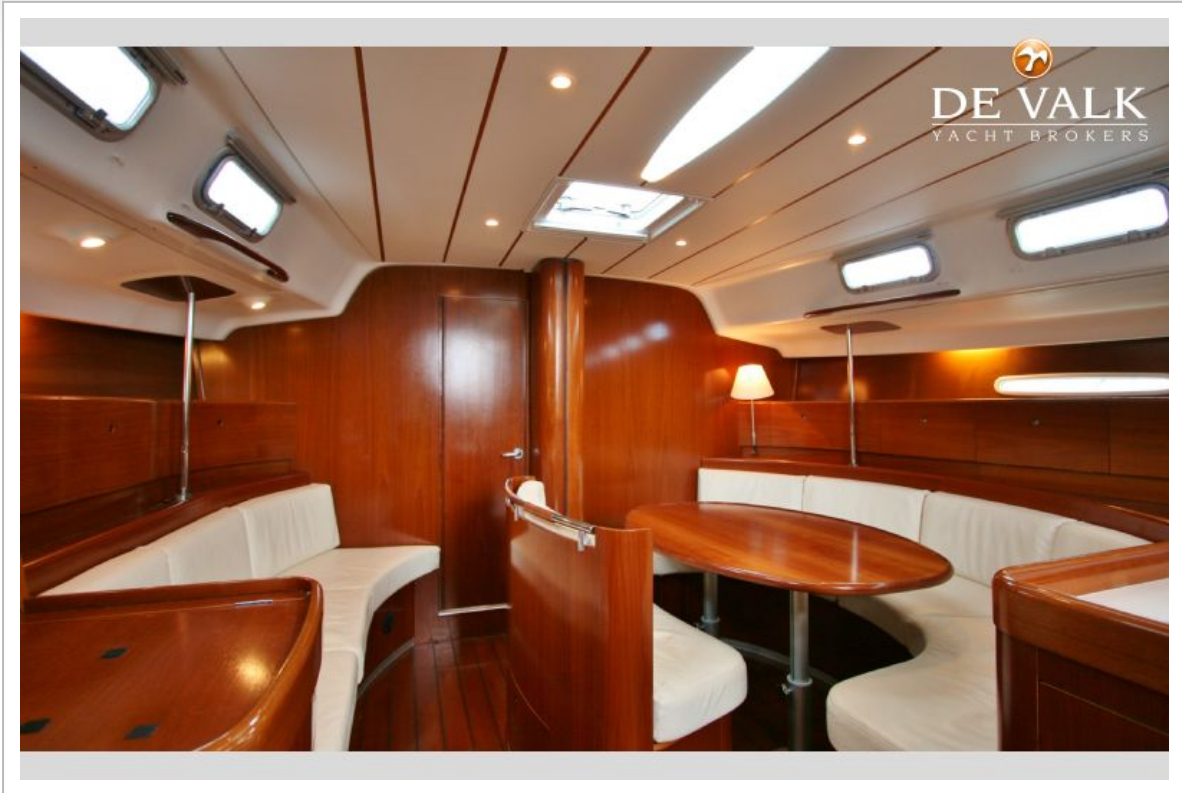
BENETEAU FIRST 47.7



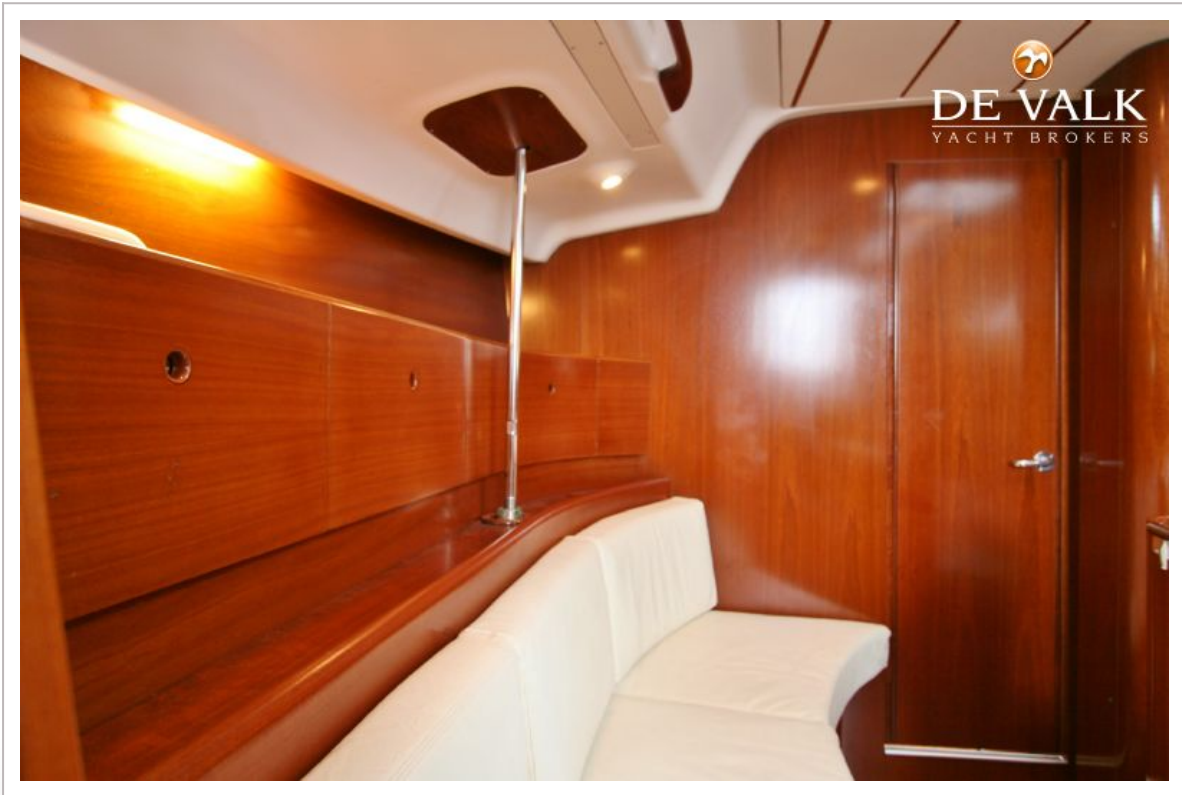
BENETEAU FIRST 47.7



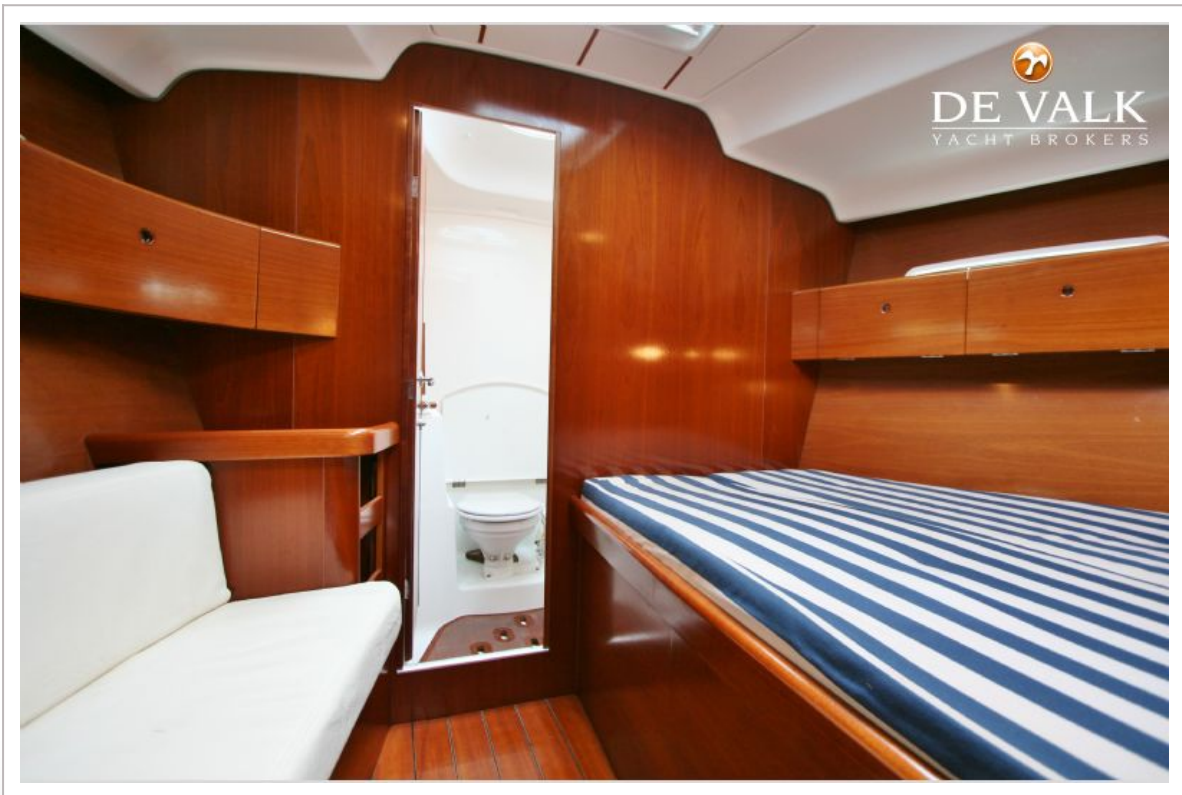
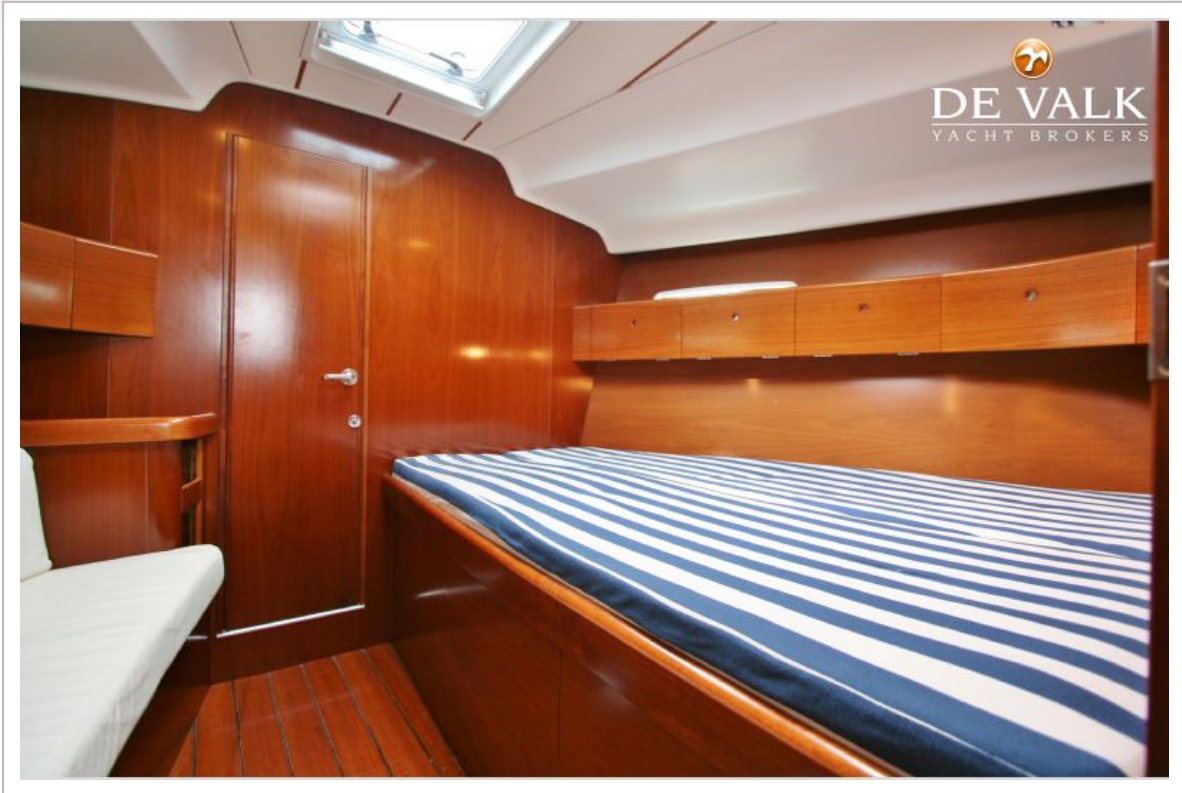
BENETEAU FIRST 47.7



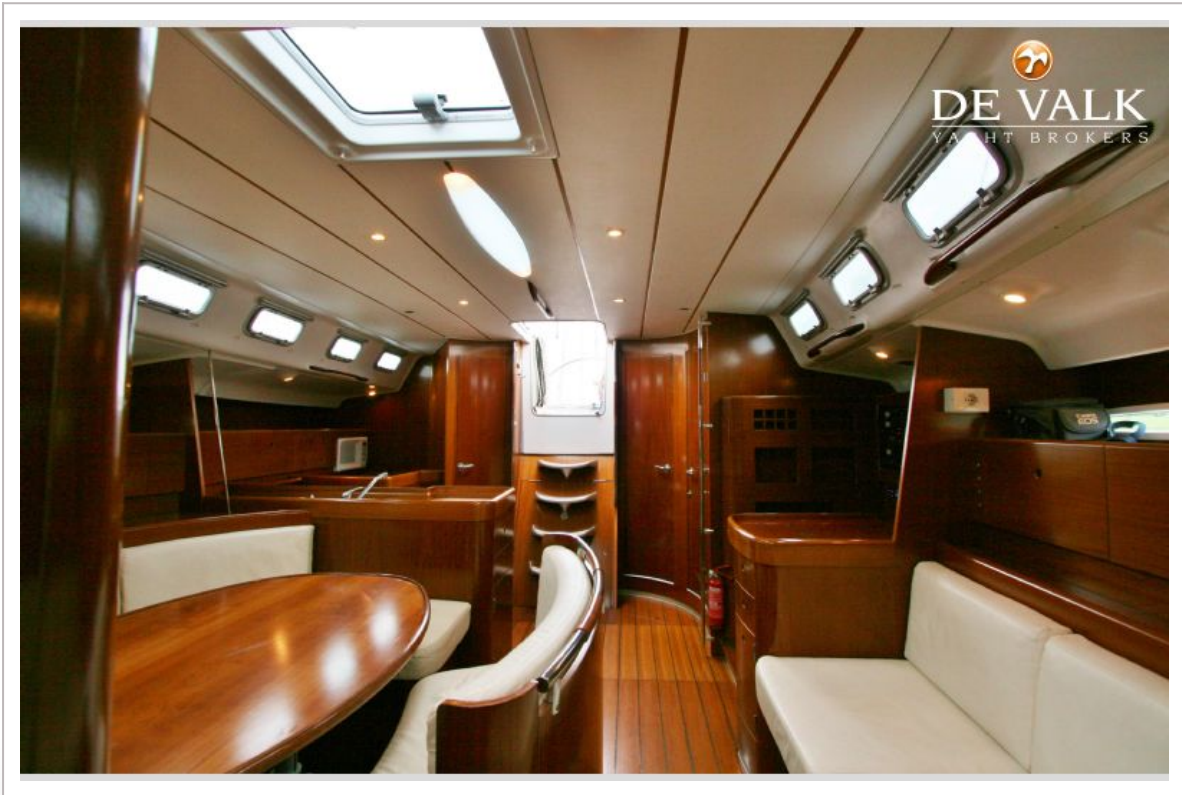
BENETEAU FIRST 47.7



BENETEAU FIRST 47.7



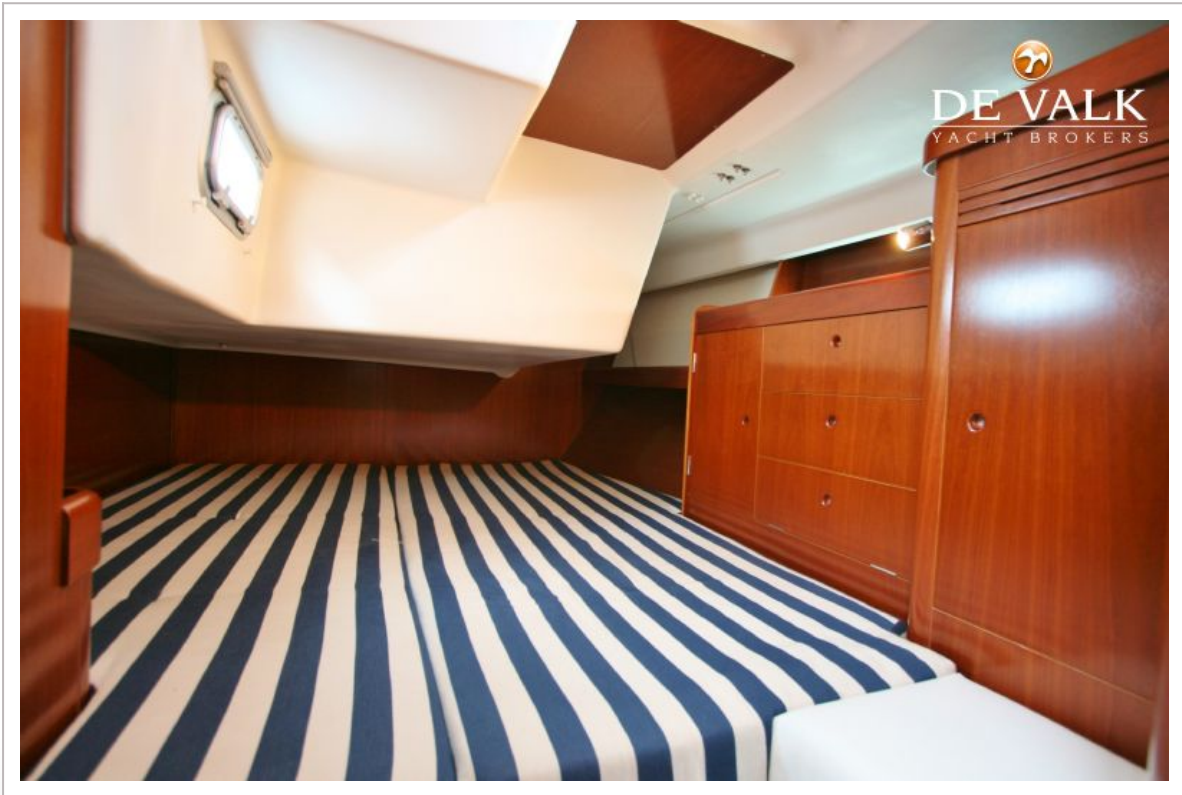
BENETEAU FIRST 47.7



BENETEAU FIRST 47.7



BENETEAU FIRST 47.7



BENETEAU FIRST 47.7

