



DE VALK
YACHT BROKERS



HALLBERG RASSY 43



DE VALK
YACHT BROKERS

HALLBERG RASSY 43

BROKER'S COMMENTS

Hallberg Rassy has a phenomenal reputation for building safe, seaworthy and comfortable boats, and this 43-footer "Derwent" is no exception. Everything on this yacht is like that for a reason – nothing is left to chance. Her wide, uncluttered decks, no-thrills rig and deep, comfortable cockpit all combine to make her feel very stately, while the furling sails and electric winches make her very easy to sail. This is a yacht for bluewater cruising par excellence – she'd take you almost anywhere without you needing to break a sweat.

Henk Sijbranda

SPECIFICATIONS

Dimensions	13.57 x 4.08 x 2.00 (m)	Builder	Hallberg Rassy Varv AB
Built	2003	Cabins	2
Material	GRP	Berths	7
Engine(s)	1 x Volvo Penta D2-55 diesel	Hp/Kw	55.00 (hp), 40.42 (kw)
Asking price	sold (VAT)	Lying	contact Hindeloopen

CONTACT

Sales office	De Valk Hindeloopen B.V.	Telephone	+31 514 52 40 00
Address	Oosterstrand 1 8713 JS Hindeloopen NL	E-mail	hindeloopen@devalk.nl

DISCLAIMER

These particulars are given in good faith as supplied but cannot be guaranteed.



HALLBERG RASSY 43

GENERAL

Model	HALLBERG RASSY 43
Type	sailing yacht
LOA (m)	13,57
LWL (m)	11,75
Beam (m)	4,08
Draft (m)	2,00
Air draft (m)	20,00
Headroom (m)	1,97
Year built	2003
Launched	2005
Builder	Hallberg Rassy Varv AB
Country	Sweden
Designer	German Frers
Displacement (t)	12,7
Ballast (tonnes)	lead 4,75
CE norm	A
Hull material	GRP
Hull colour	off-white
Hull shape	round-bilged
Keel type	fin keel with bulb
Superstructure material	GRP
Rubbing strake	yes
Deck material	GRP
Deck finish	teak
Superstructure deck finish	teak
Cockpit deck finish	teak
Antifouling (year)	2016
Window frame	aluminium
Window material	polycarbonate
Deckhatch	3 x Lewmar



Fuel tank (litre)	stainless steel 400
Freshwater tank (litre)	stainless steel 650
Level indicator (freshwater)	yes
Blackwater tank (litre)	stainless steel 2 x 60
Blackwater tank extraction	deck extraction + uw line
Wheel steering	rack & pinion
Emergency tiller	yes

ACCOMMODATION

Cabins	2
Berths	7
Interior	mahogany
Layout	Classic
Floor	carpet
Open cockpit	yes
Aft deck	yes
Heating	calorgas ducted hot air Webasto
Navigation center	yes
Chart table	yes
Galley	yes
Countertop	plastic White
Sink	stainless steel Double
Cooker	calor gas Eno 2 burner
Oven	Combi
Fridge	yes
Freezer	yes
Hot water system	220V + engine Boiler +/- 60 ltrs.
Water pressure system	electrical
Manual and/or foot pump	yes
Owners cabin	double bed + single bed
Bed length (m)	2



Wardrobe	hanging/drawers/shelves
Bathroom	en suite
Toilet	en suite
Toilet system	electric
Wash basin	in the bathroom
Shower	separate
Guest cabin 1	v-bed
Bed length (m)	2
Wardrobe	hanging and shelves
Bathroom	en suite
Toilet	separate
Toilet system	electric
Wash basin	in the bathroom
Washing machine	yes

MACHINERY

No of engines	1
Make	Volvo Penta
Type	D2-55
HP	55,00
kW	40,42
Fuel	diesel
Year installed	2003
Maximum speed (kn)	8
Cruising speed (kn)	7
Consumption (l/hr)	4
Engine hours	1450
Engine cooling system	freshwater heat exchanger
Drive	shaft
Shaft seal	Stuffy box
Engine controls	mechanical



Gearbox	hydraulic
Bowthruster	electric Side power
Exhaust	watercooled
Propeller type	folding Gori
Propeller blades	3
Shaft lubrication	water
Manual bilge pump	yes
Electric bilge pump	2 x
Bilge alarm	yes
Start battery	2016
Service battery	2016, total 660 Ah
Bowthruster battery	2016
Battery charger	yes
Inverter	yes
Shorepower	with cable

NAVIGATION

Compass	yes
Depth sounder	Raymarine
Log	yes
Windset	yes
VHF	Furuno with repeater
Autopilot	yes
Radar	yes
GPS	yes
Plotter	2 x (80 + 120)
Navtex	yes
PC connection	yes
AIS receiver	yes
AIS transponder	yes
Navigation lights	yes



EQUIPMENT

Fixed windscreen	yes
Cockpit cover	yes
Cockpit table	Folding
Boarding ladder	yes
Bow ladder	yes
Deck shower	yes
Anchor	Delta
Anchor chain	50 m
Anchor 2	Stern
Windlass	electrical
Capstan	yes
Deck wash	yes
Outboard support	yes
Sea railing	wire Stainless steel
Grab rail (superstructure)	teak
Railing side opening gates	yes
Pushpit	yes
Pulpit	yes
Life raft	valise (or bag) 4 persons, (not surveyd)
Lifejackets	yes
Safety lines on deck	yes
Horn	electric
Radar reflector	yes
Fenders	yes
Mooring lines	yes
TV	Samsung
Radio-cd player	Pioneer
iPod connection	yes
Cockpit speakers	yes
Speakers in cabin	yes



Clock - barometer	yes
Fire extinguisher	yes
Extinguisher in engine room	yes

RIGGING

Rigging	sloop
Standing rigging	wire
Brand mast	Seldén
Material mast	aluminium
Spreaders	3
Mainsail	yes
Fully battened mainsail	Vertical
Stoway mast	Electrical
Jib	yes
Genoa	yes
Genoa furler	yes
Gennaker	yes
Reefing System	main in-mast furling
Backstay adjuster	hydraulic Navtec
Boomvang	mechanical and tackle
Primary sheet winch	2x 54 CST electrical
Secondary sheet winch	2 x 40 CST (1 electrical)
Halyard winches	yes
Gennaker pole	Stainless steel



HALLBERG RASSY 43



HALLBERG RASSY 43



HALLBERG RASSY 43



HALLBERG RASSY 43



HALLBERG RASSY 43



HALLBERG RASSY 43



HALLBERG RASSY 43



HALLBERG RASSY 43



HALLBERG RASSY 43



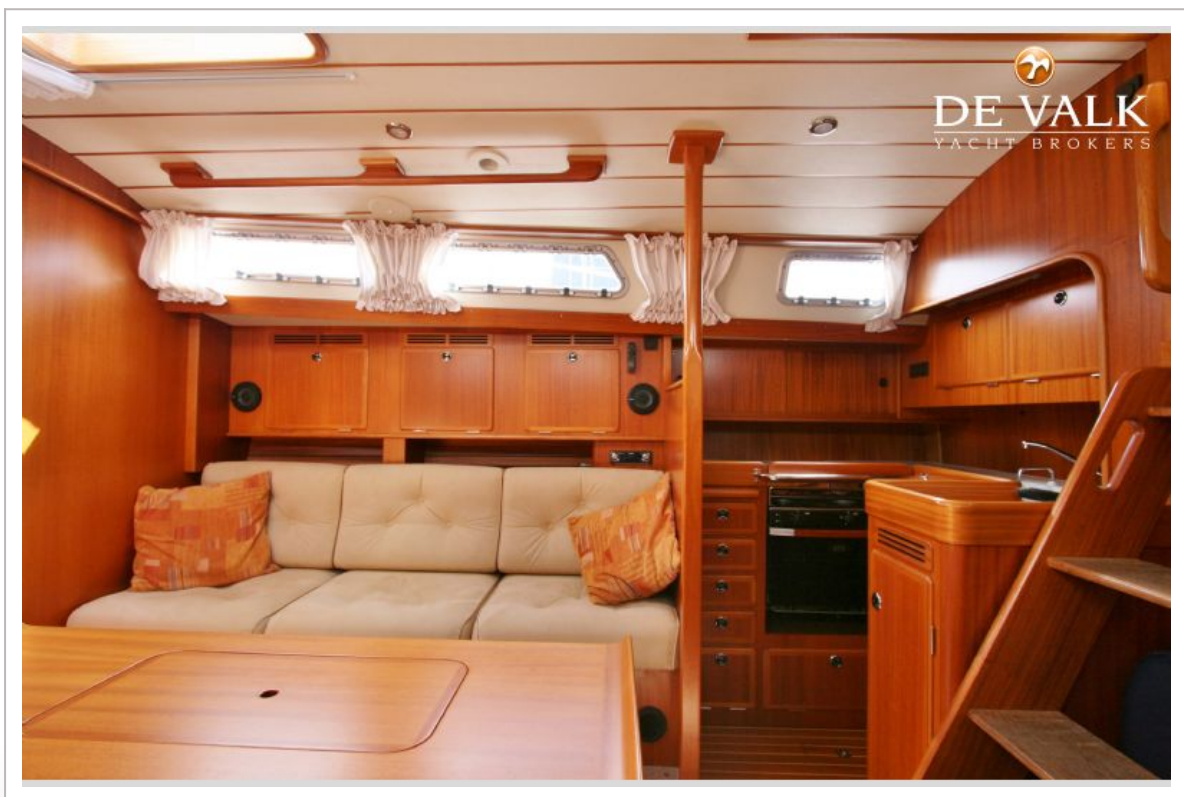
HALLBERG RASSY 43



HALLBERG RASSY 43



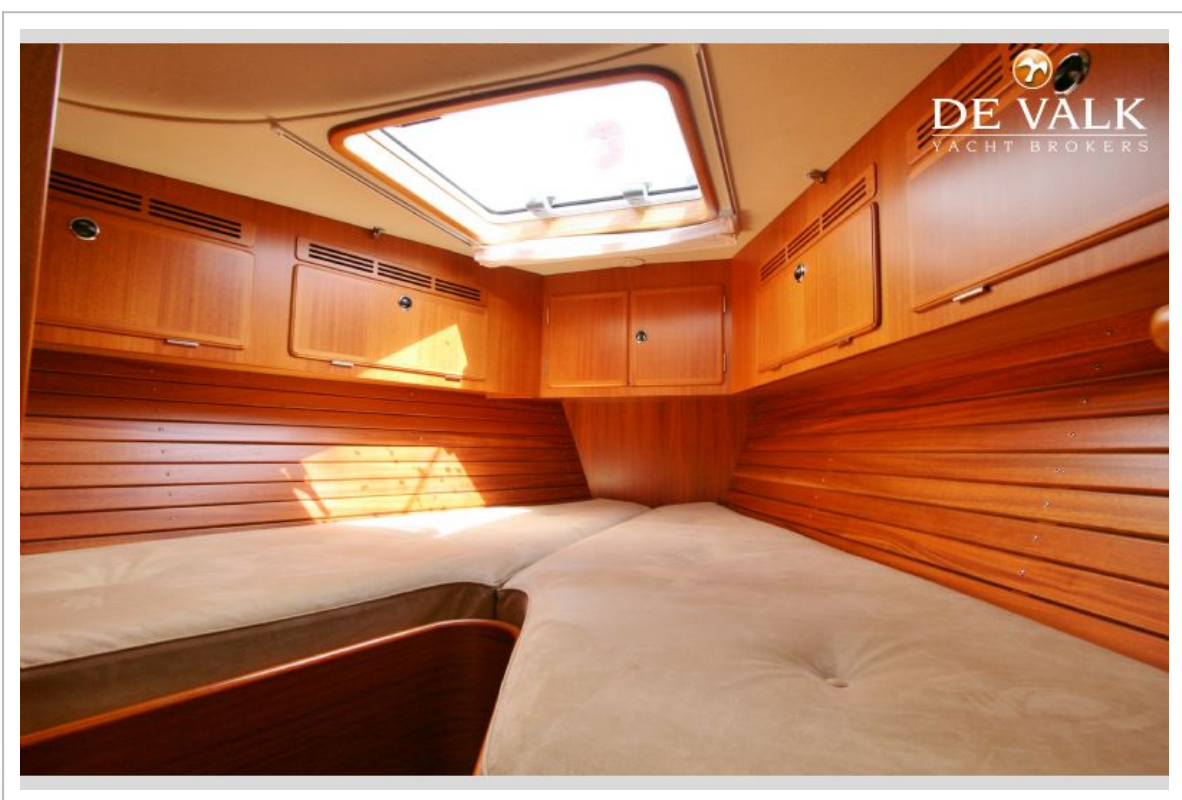
HALLBERG RASSY 43



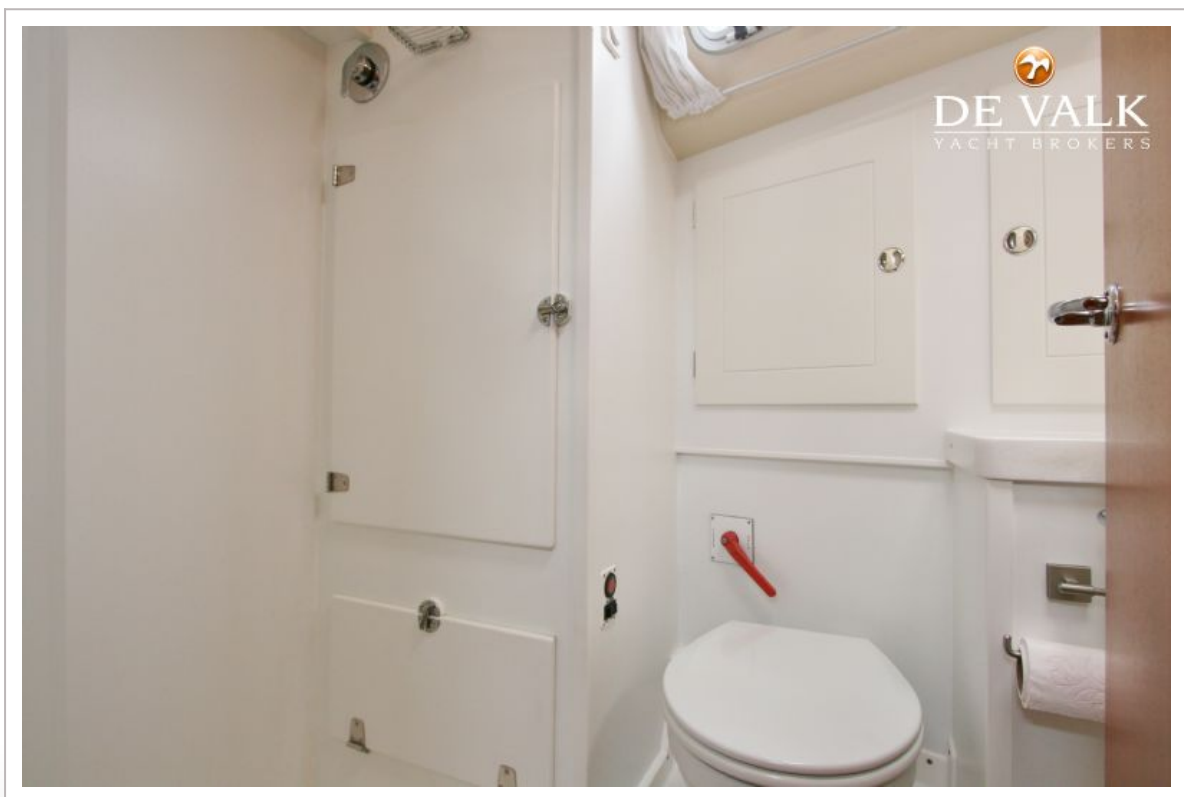
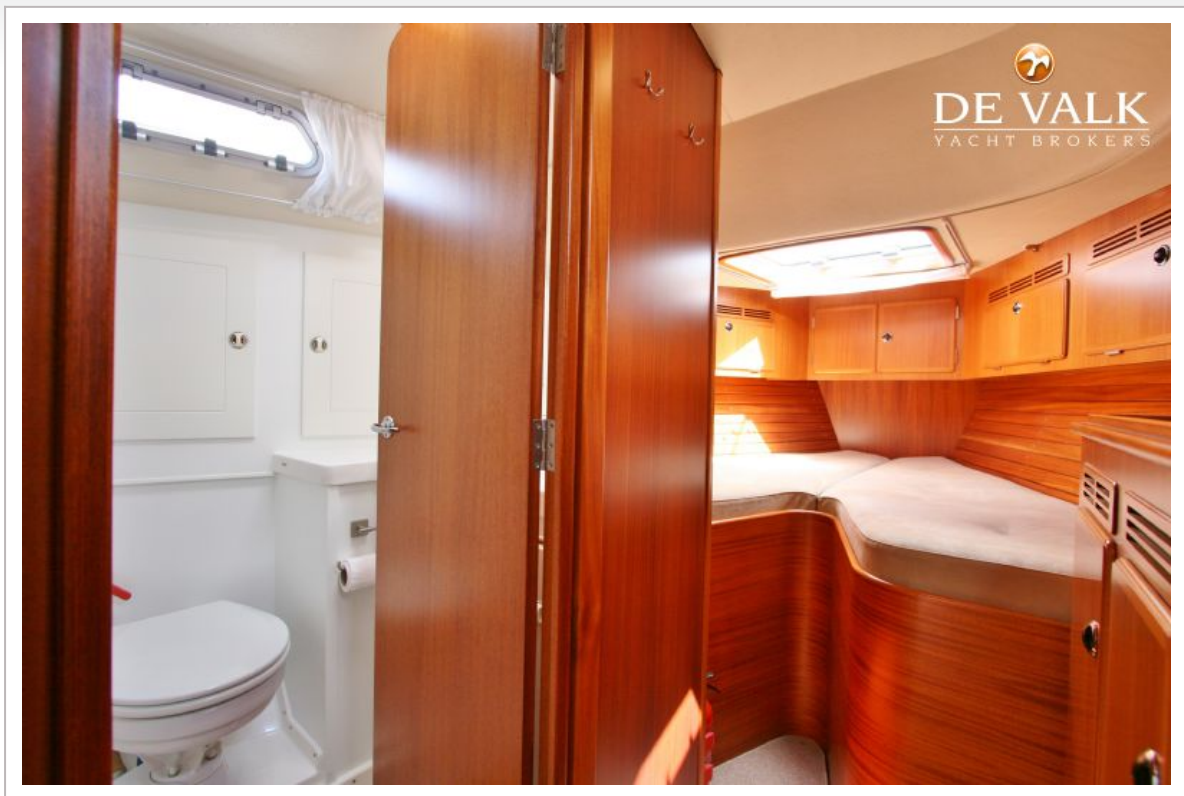
HALLBERG RASSY 43



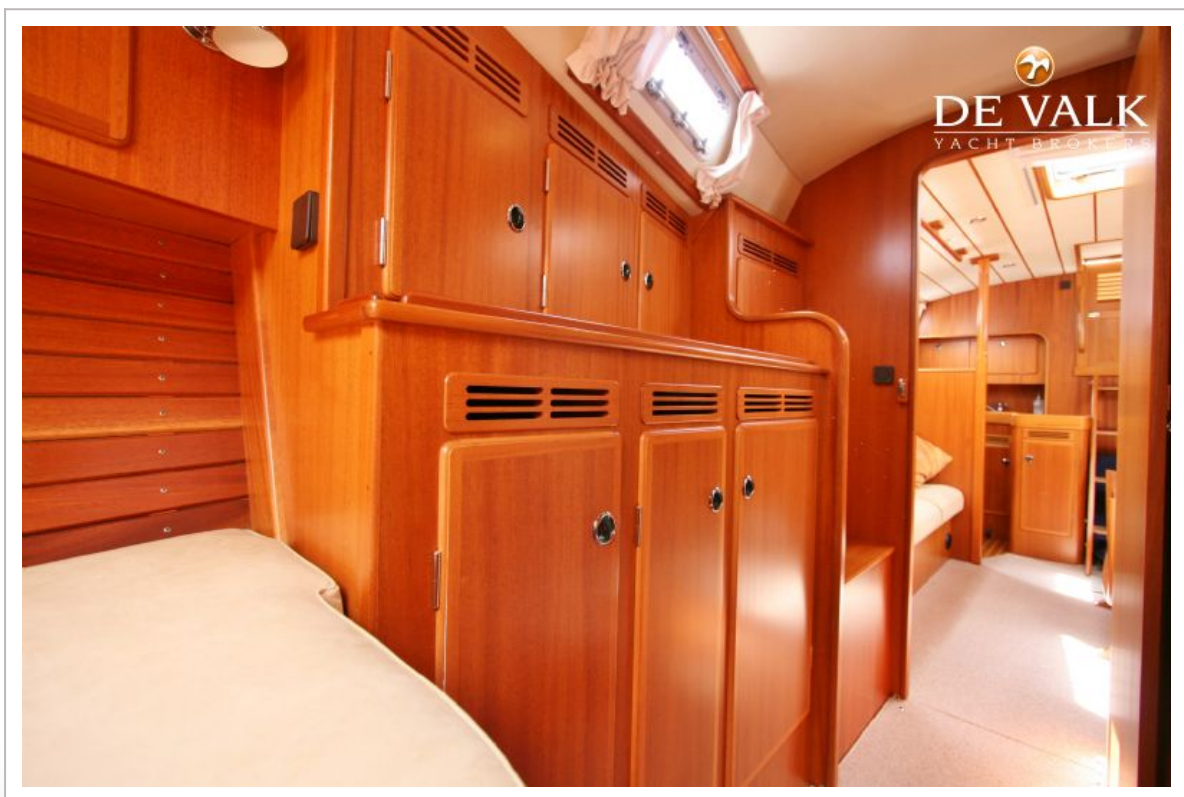
HALLBERG RASSY 43



HALLBERG RASSY 43



HALLBERG RASSY 43



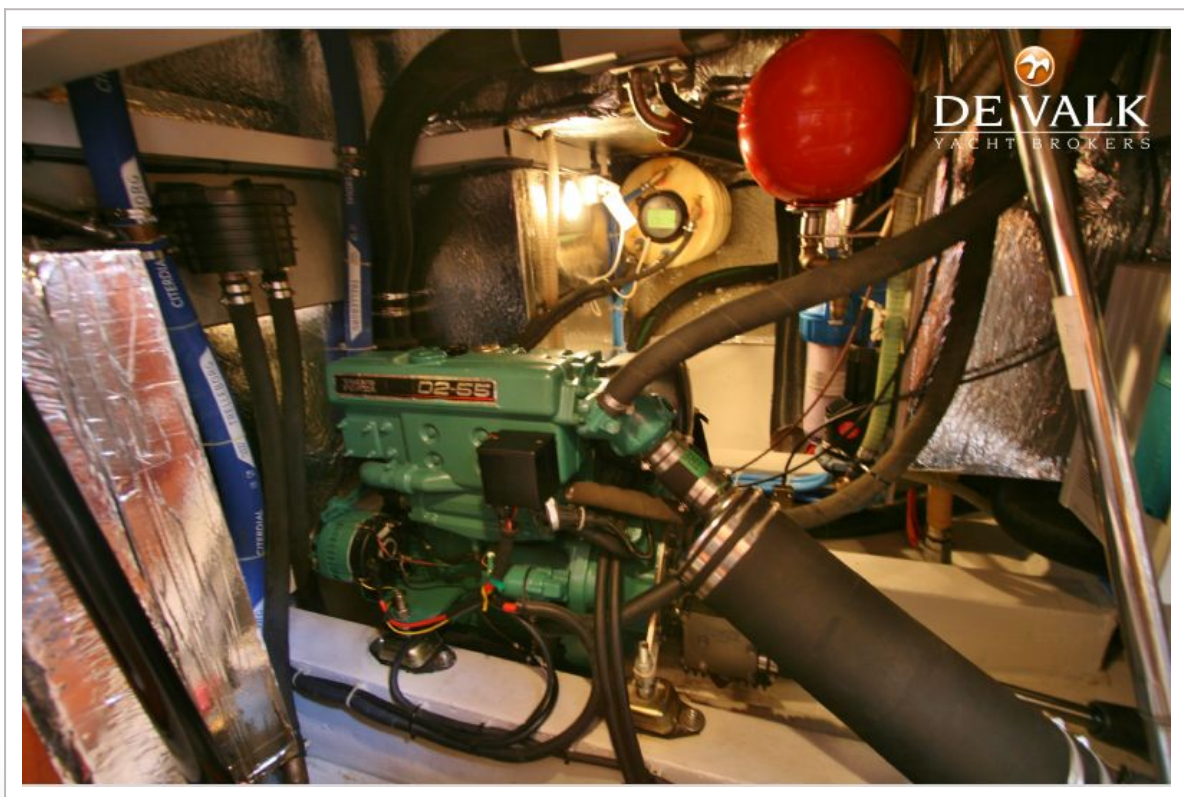
HALLBERG RASSY 43



HALLBERG RASSY 43



HALLBERG RASSY 43



HALLBERG RASSY 43



HALLBERG RASSY 43

