



DE VALK
YACHT BROKERS



NOORDKAPER 40



DE VALK
YACHT BROKERS

BROKER'S COMMENTS

This lovely Noordkaper 40 is a real eyecatcher. She is built for her present owner to a very high standard. she's a very strong, hardly used, real world cruiser and ready to go on any trip. She offers style and comfort. Her deckhouse makes her ideal for living aboard.

Tjerk Bouma

SPECIFICATIONS

| | | | |
|---------------------|---------------------------|----------------|------------------------|
| Dimensions | 12.50 x 4.00 x 1.60 (m) | Builder | Mecon Lemmer |
| Built | 2002 | Cabins | 2 |
| Material | Steel | Berths | 4 |
| Engine(s) | 1 x Nanni 5,280 HE diesel | Hp/Kw | 65.00 (hp), 47.78 (kw) |
| Asking price | sold (VAT) | Lying | contact Hindeloopen |

CONTACT

| | | | |
|---------------------|---|------------------|-----------------------|
| Sales office | De Valk Hindeloopen B.V. | Telephone | +31 514 52 40 00 |
| Address | Oosterstrand 1 8713 JS Hindeloopen NL | E-mail | hindeloopen@devalk.nl |

DISCLAIMER

These particulars are given in good faith as supplied but cannot be guaranteed.



GENERAL

| | |
|----------------------------|------------------|
| Model | NOORDKAPER 40 |
| Type | sailing yacht |
| LOA (m) | 12,50 |
| LWL (m) | 11,50 |
| Beam (m) | 4,00 |
| Draft (m) | 1,60 |
| Air draft (m) | 19,00 |
| Headroom (m) | 1,92 |
| Year built | 2002 |
| Builder | Mecon Lemmer |
| Country | The Netherlands |
| Designer | Bekebrede |
| Displacement (t) | 19 |
| Ballast (tonnes) | lead 4 |
| Hull material | steel |
| Hull colour | blue |
| Hull thickness (mm) | 5 |
| Hull shape | multi hard chine |
| Keel type | long keel |
| Superstructure material | steel |
| Superstructure (mm) | 4 |
| Deck plate thickness (mm) | 5 |
| Rubbing strake | stainless steel |
| Deck material | steel |
| Deck finish | teak |
| Superstructure deck finish | paint |
| Cockpit deck finish | teak |
| Antifouling (year) | 2017 |
| Dorades | yes |
| Window frame | aluminium |



| | |
|------------------------------|------------------------|
| Window material | double glazing |
| Deckhatch | yes |
| Portholes | brass |
| Insulation | foam |
| Fuel tank (litre) | steel 450 |
| Level indicator (fuel tank) | yes |
| Fuel daytank (litre) | stainless steel 45 |
| Freshwater tank (litre) | stainless steel 400 |
| Level indicator (freshwater) | yes |
| Blackwater tank (litre) | stainless steel |
| Blackwater tank extraction | deck extraction + pump |
| Wheel steering | hydraulic |
| Inside helm position | Raymarine Ray Pilot |
| Outside helm position | hydraulic |
| More info on paintwork | Sikkens |

ACCOMMODATION

| | |
|---------------------|-----------------------------------|
| Cabins | 2 |
| Berths | 4 |
| Interior | cherry |
| Floor | wood |
| Open cockpit | yes |
| Deck saloon | yes |
| Headroom saloon (m) | 1,95 |
| Heating | diesel ducted hot air Eberspacher |
| Navigation center | yes |
| Chart table | yes |
| Galley | yes |
| Countertop | corian |
| Sink | stainless steel |
| Cooker | calor gas Force 10 3-burner |



| | |
|-----------------------|-------------------------|
| Oven | yes |
| Fridge | yes |
| Hot water system | 220V + engine |
| Water pressure system | electrical |
| Owners cabin | French bed |
| Bed length (m) | 2,1 |
| Wardrobe | hanging/drawers/shelves |
| Bathroom | shared |
| Toilet | shared |
| Toilet system | electric |
| Wash basin | in the bathroom |
| Shower | shared |
| Guest cabin 1 | double bed |
| Bed length (m) | 2,1 |
| Wardrobe | hanging and drawers |
| Bathroom | shared |
| Toilet | shared |
| Toilet system | electric |
| Wash basin | in the bathroom |
| Shower | shared |

MACHINERY

| | |
|---------------------|----------|
| No of engines | 1 |
| Make | Nanni |
| Type | 5,280 HE |
| HP | 65,00 |
| kW | 47,78 |
| Fuel | diesel |
| Year installed | 2001 |
| Maximum speed (kn) | 7,5 |
| Cruising speed (kn) | 6 |



| | |
|--------------------------|---------------------------|
| Consumption (l/hr) | 4 |
| Engine hours | 850 |
| Engine cooling system | freshwater heat exchanger |
| Drive | shaft |
| Shaft seal | Volvo seal |
| Engine controls | bowden cable |
| Gearbox | hydraulic |
| Bowthruster | hydraulic |
| Exhaust | watercooled |
| Propeller type | fixed |
| Propeller blades | 4 |
| Propeller shaft material | stainless steel |
| Shaft lubrication | water |
| Manual bilge pump | yes |
| Electric bilge pump | yes |
| Batteries | yes |
| Start battery | 2016 |
| Service battery | 2015 |
| Battery charger/inverter | Victron |
| Shorepower | with cable |
| Insulation transformer | yes |

NAVIGATION

| | |
|------------------------|---------------------|
| Compass | yes |
| Electric compass | Raytheon |
| Depth sounder/log | Raytheon ST60 Depth |
| Log | Raytheon ST60 Speed |
| VHF | Uniden |
| VHF handheld | Cobra |
| Autopilot | Raymarine ST 6000+ |
| Rudder angle indicator | Raymarine ST 6000+ |



| | |
|-------------------|-----------------------------------|
| AIS receiver | yes |
| Navigation lights | yes |
| Extra info | Remote autopilot Raymarine ST600R |

EQUIPMENT

| | |
|----------------------------|-----------------|
| Fixed windscreen | yes |
| Winter cover | 2016 |
| Cockpit table | yes |
| Cockpit chairs | yes |
| Anchor | Bruce |
| Anchor chain | 50m |
| Anchor 2 | Danforth |
| Anchor chain | yes |
| Windlass | hydraulic |
| Davits | steel |
| Davits controls | manual |
| Sea railing | stainless steel |
| Grab rail (superstructure) | stainless steel |
| Railing side opening gates | yes |
| Pushpit | yes |
| Pulpit | yes |
| Lifejackets | yes |
| Lifebuoy | yes |
| Wiper | yes |
| Binocular | yes |
| Fenders | yes |
| Mooring lines | yes |
| TV receiver | yes |
| Radio-cd player | Kenwood |
| Speakers in salon | yes |
| Fire extinguisher | yes |



RIGGING

| | |
|-------------------------------|-----------------------|
| Rigging | sloop-cutter |
| Standing rigging | wire |
| Brand mast | Sparcraft |
| Material mast | aluminium |
| Spreaders | yes |
| Mainsail | De Vries Lemmer 32m2 |
| Stoway mast | yes |
| Cutterstay | yes |
| Jib | De Vries Lemmer 18m2 |
| Genoa I | De Vries Lemmer 48m2 |
| Genoa cover | yes |
| Cutter furler | yes |
| Gennaker | De Vries 125m2 |
| Self tacking jib installation | yes |
| Reefing System | main in-mast furling |
| Backstay adjuster | mechanical |
| Boomvang | mechanical and tackle |
| Primary sheet winch | 1x Andersen 28 ST |
| Secondary sheet winch | 2x Andersen 46 ST |
| Genoa sheetwinches | 2x Andersen 52 ST |
| Halyard winches | 1x Andersen 40 ST |



NOORDKAPER 40

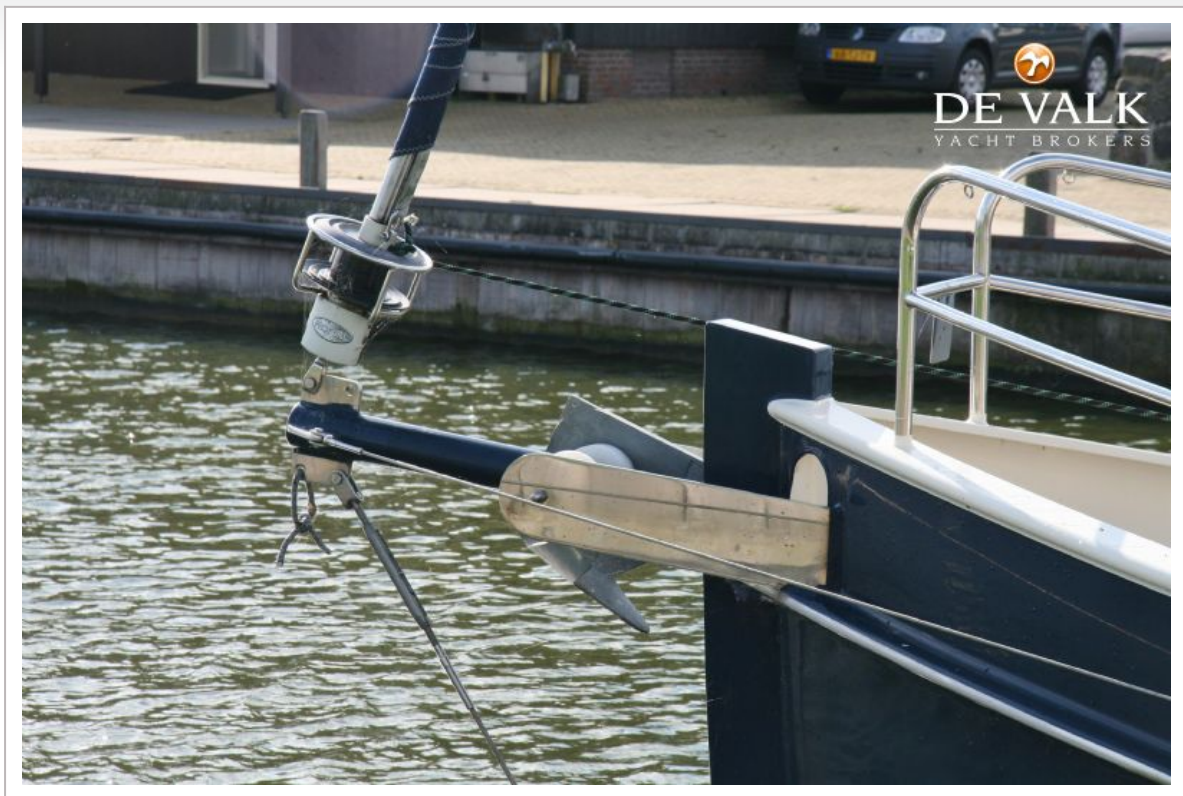


NOORDKAPER 40



NOORDKAPER 40





NOORDKAPER 40





NOORDKAPER 40



NOORDKAPER 40



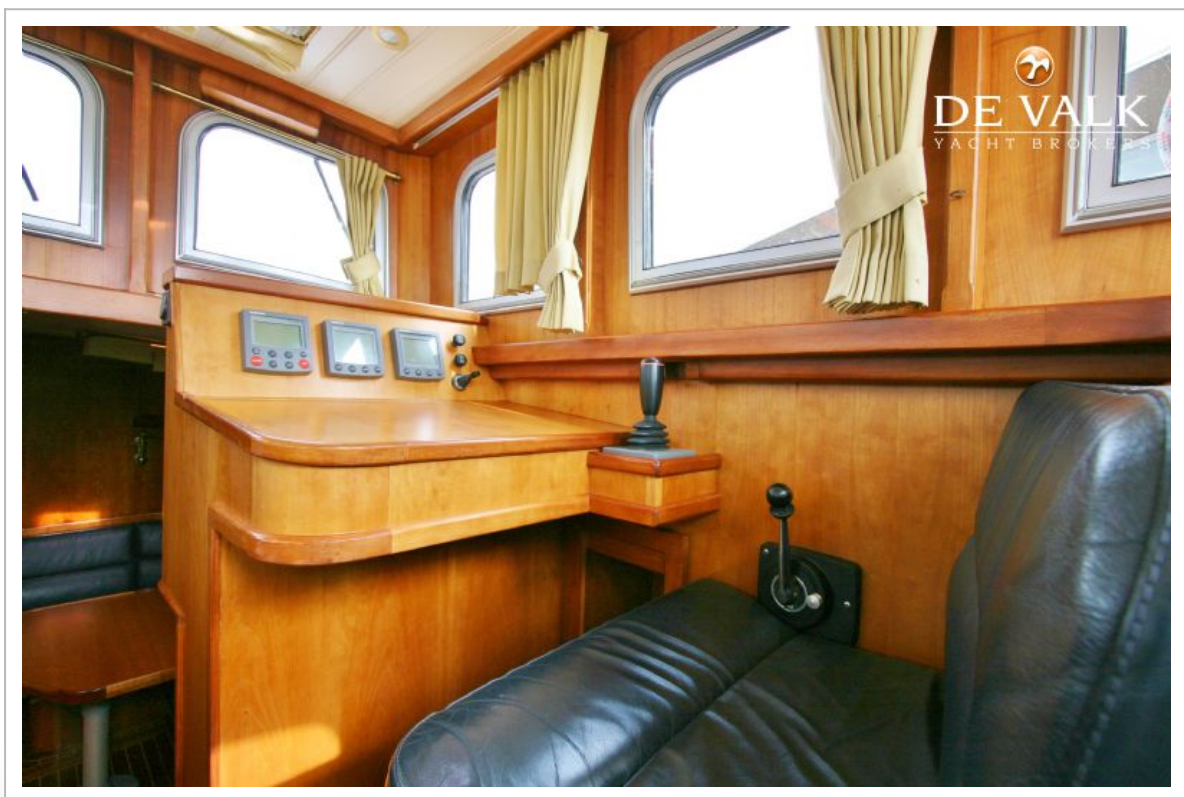
NOORDKAPER 40



NOORDKAPER 40



NOORDKAPER 40



NOORDKAPER 40



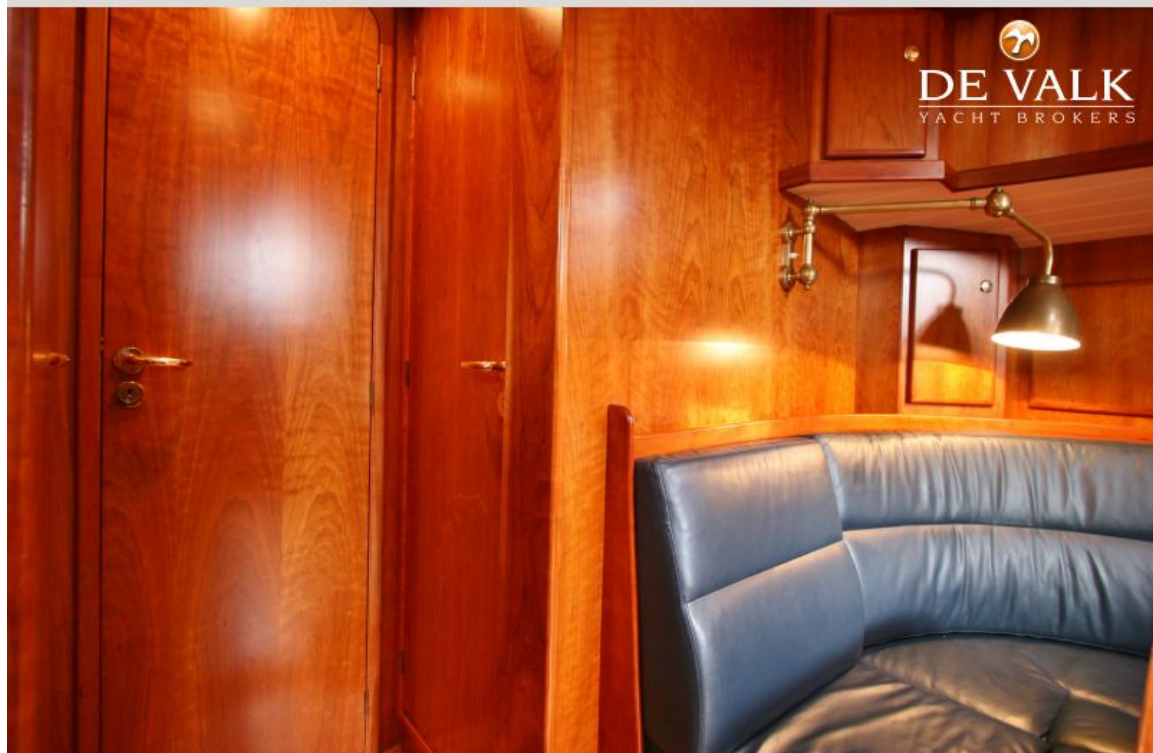
NOORDKAPER 40

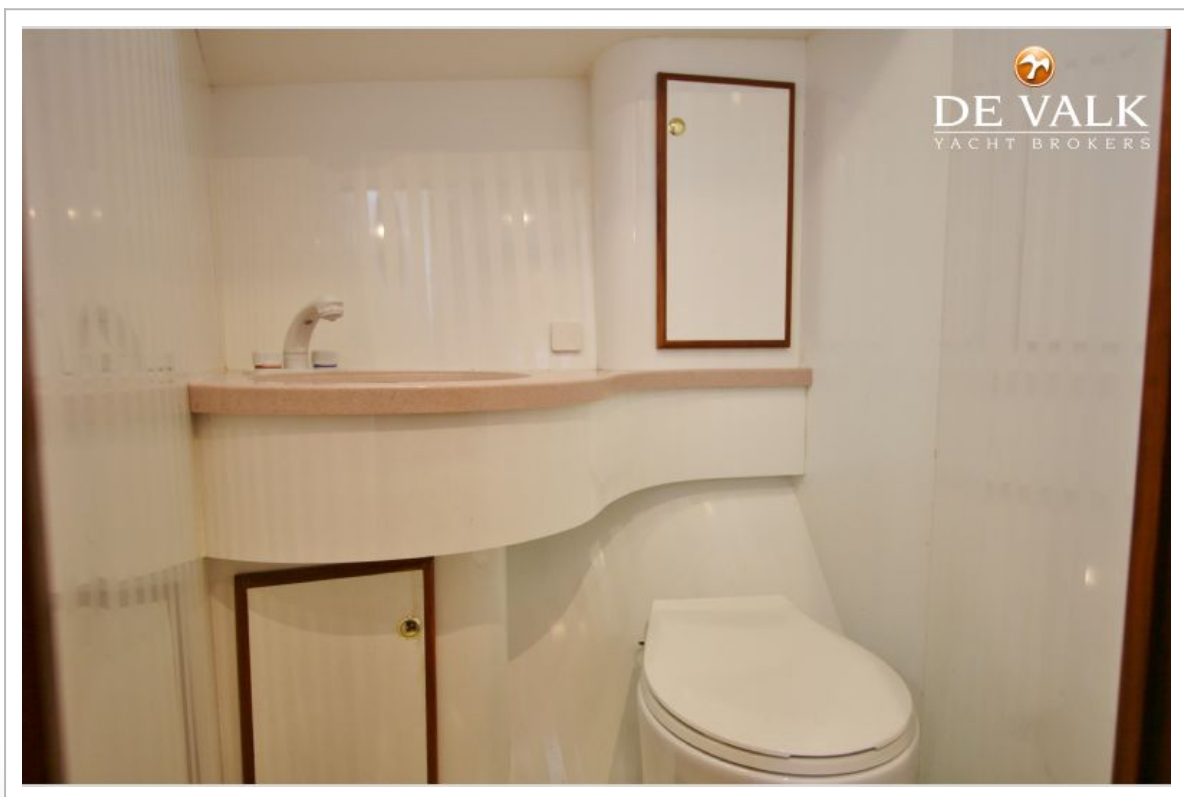
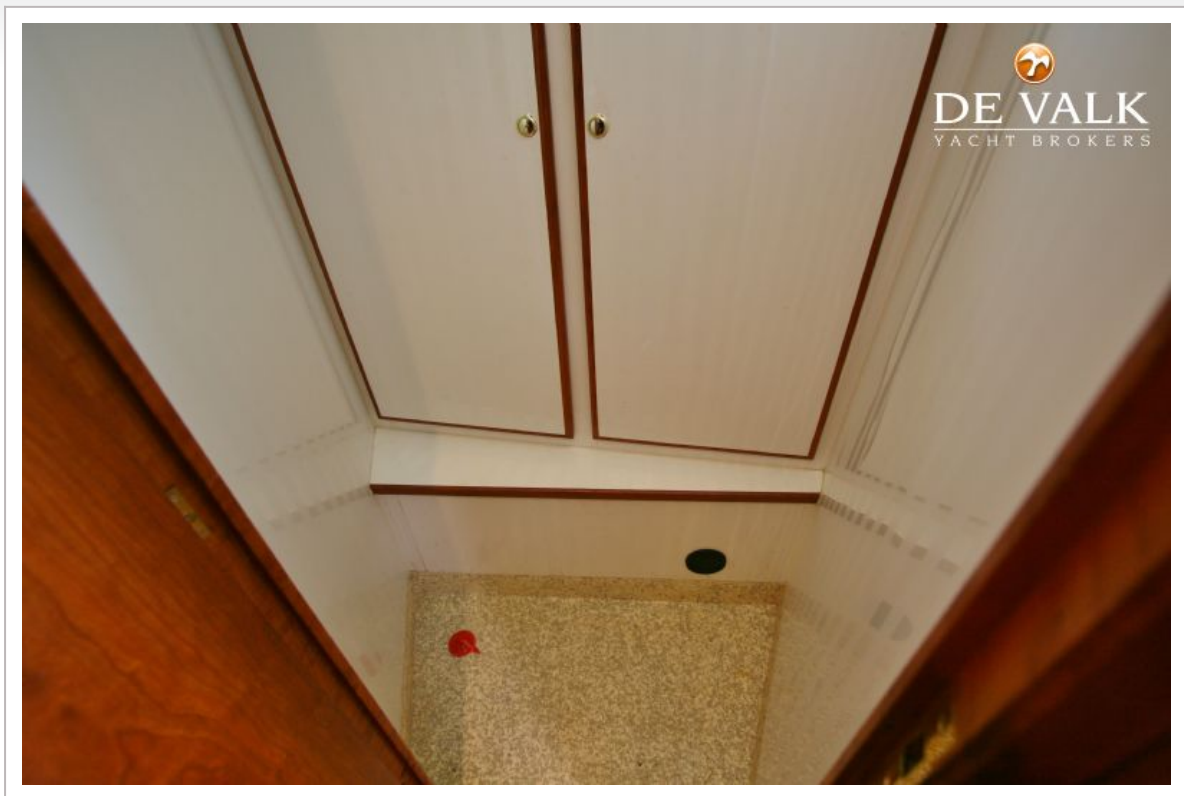


NOORDKAPER 40



NOORDKAPER 40





NOORDKAPER 40

