



DE VALK
YACHT BROKERS



BAVARIA 50 CRUISER



DE VALK
YACHT BROKERS

BAVARIA 50 CRUISER

BROKER'S COMMENTS

The Bavaria 50 is a perfect family cruiser. The "Taodao" is among others equipped with the newest Raymarine equipment, a stoway mast, furling headsail, five cabins, sail drive, heating and bow thruster. She is very well maintained by her owner, and ready for the new season. This Bavaria 50 is in an very good condition.

Tjerk Bouma

SPECIFICATIONS

Dimensions	14.98 x 4.49 x 1.85 (m)	Builder	Bavaria Yachtwerf gmbh
Built	2008	Cabins	5
Material	GRP	Berths	10
Engine(s)	1 x Volvo Penta D2-75C diesel	Hp/Kw	75.00 (hp), 55.13 (kw)
Asking price	sold (VAT)	Lying	at sales office

CONTACT

Sales office	De Valk Hindeloopen B.V.	Telephone	+31 514 52 40 00
Address	Oosterstrand 1 8713 JS Hindeloopen NL	E-mail	hindeloopen@devalk.nl

DISCLAIMER

These particulars are given in good faith as supplied but cannot be guaranteed.



BAVARIA 50 CRUISER

GENERAL

Model	BAVARIA 50 CRUISER
Type	sailing yacht
LOA (m)	14,98
Beam (m)	4,49
Draft (m)	1,85
Air draft (m)	20,55
Headroom (m)	2,05
Year built	2008
Builder	Bavaria Yachtwerf gmbh
Country	Germany
Designer	J & J design
Displacement (t)	12,7
CE norm	A
Hull material	GRP
Hull colour	white
Hull shape	round-bilged
Keel type	fin keel
Superstructure material	GRP
Rubbing strake	stainless steel
Deck material	GRP
Deck finish	non-skid moulded in
Superstructure deck finish	non-skid moulded in
Cockpit deck finish	teak
Antifouling (year)	2017
Dorades	1x
Window frame	aluminium
Deckhatch	11x Lewmar
Fuel tank (litre)	320
Freshwater tank (litre)	750
Blackwater tank (litre)	polyethylene 3x



BAVARIA 50 CRUISER

Blackwater tank extraction	deck extraction
Wheel steering	mechanical
Emergency tiller	yes

ACCOMMODATION

Cabins	5
Berths	10
Interior	mahogany
Floor	teak and holly
Open cockpit	yes
Saloon	yes
Headroom saloon (m)	2,05
Heating	diesel ducted hot air Webasto
Chart table	yes
Aft Cabin	2x
Galley	yes
Countertop	Duropal
Sink	Double
Cooker	calor gas 2 burner
Oven	In cooker
Fridge	Coolmatic and Waeco
Freezer	Coolmatic with freezing compartment
Hot water system	220V + engine
Water pressure system	electrical
Coffee maker	yes
Crockery	yes
Owners cabin	double bed Forward cabin
Bed length (m)	2,10
Wardrobe	hanging/drawers/shelves
Guest cabin 1	bunk bed
Bed length (m)	2



BAVARIA 50 CRUISER

Wardrobe	hanging and shelves
Guest cabin 2	bunk bed
Bed length (m)	2
Wardrobe	hanging and shelves
Bathroom	shared I
Toilet	yes
Toilet system	electric
Wash basin	yes
Shower	yes
Guest cabin 3	double bed Aft cabin
Bed length (m)	2,10
Wardrobe	hanging and drawers
Bathroom	II
Toilet	Jabsco
Toilet system	manual
Wash basin	yes
Guest cabin 4	double bed Aft cabin
Bed length (m)	2,10
Wardrobe	hanging and drawers
Bathroom	III
Toilet	Jabsco
Toilet system	manual
Wash basin	yes
Shower	yes

MACHINERY

No of engines	1
Make	Volvo Penta
Type	D2-75C
HP	75
kW	55.13



BAVARIA 50 CRUISER

Fuel	diesel
Year installed	2007
Maximum speed (kn)	8
Cruising speed (kn)	7
Consumption (l/hr)	4
Engine hours	1420
Engine cooling system	freshwater heat exchanger
Drive	sail-drive
Engine controls	bowden cable
Gearbox	mechanical
Bowthruster	electric Side-Power
Exhaust	watercooled
Propeller type	fixed
Propeller blades	3
Manual bilge pump	yes
Electric bilge pump	yes
Bilge alarm	yes
Electrical installation	12 / 220V
Start battery	Exide - 62Ah
Service battery	2x Exide - 180Ah
Battery charger	Philippi - Bordlader Pro
Shorepower	with cable

NAVIGATION

Compass	2x Plastimo
Depth sounder	Data from: 2x Raymarine i70s / new in 2017
Log	Data from: 2x Raymarine i70s / new in 2017
Windset	Data from: 2x Raymarine i70s / new in 2017
VHF	Raymarine Ray218E
Autopilot	Control unit: Raymarine p70s / new in 2017
Rudder angle indicator	On autopilot display



BAVARIA 50 CRUISER

Radar	Raymarine
Radar/GPS/plotter	Raymarine eS serie / new in 2017
AIS receiver	yes
Navigation lights	yes

EQUIPMENT

Sprayhood with grab rail	yes
Cockpit table	yes
Bathing platform	yes
Boarding ladder	stainless steel
Deck shower	yes
Anchor	CQR Plough Stainless steel
Anchor chain	Stainless steel
Windlass	electrical Quick
Sea railing	wire
Grab rail (superstructure)	stainless steel
Railing side opening gates	yes
Pushpit	yes
Pulpit	yes
Life raft (pers)	10
Lifejackets	10
Lifebuoy	yes
Safety lines on deck	yes
Horn	yes
Fenders	yes
Mooring lines	yes
TV	Orion with dvd
Radio-cd player	yes
Cockpit speakers	Bose Marine
Speakers in salon	yes
Clock - barometer	Wempe



BAVARIA 50 CRUISER

Fire extinguisher

yes

RIGGING

Rigging

sloop

Standing rigging

wire

Brand mast

Seldén

Material mast

aluminium

Spreaders

2 pair

Mainsail

yes

Stoway mast

yes

Genoa

yes

Genoa furler

yes

Reefing System

main in-mast furling

Backstay adjuster

mechanical Seldén

Boomvang

gasspring

Secondary sheet winch

2x Lewmar 48

Genoa sheetwinches

2x Lewmar 54

Halyard winches

2x Lewmar 48



BAVARIA 50 CRUISER



BAVARIA 50 CRUISER



BAVARIA 50 CRUISER



BAVARIA 50 CRUISER



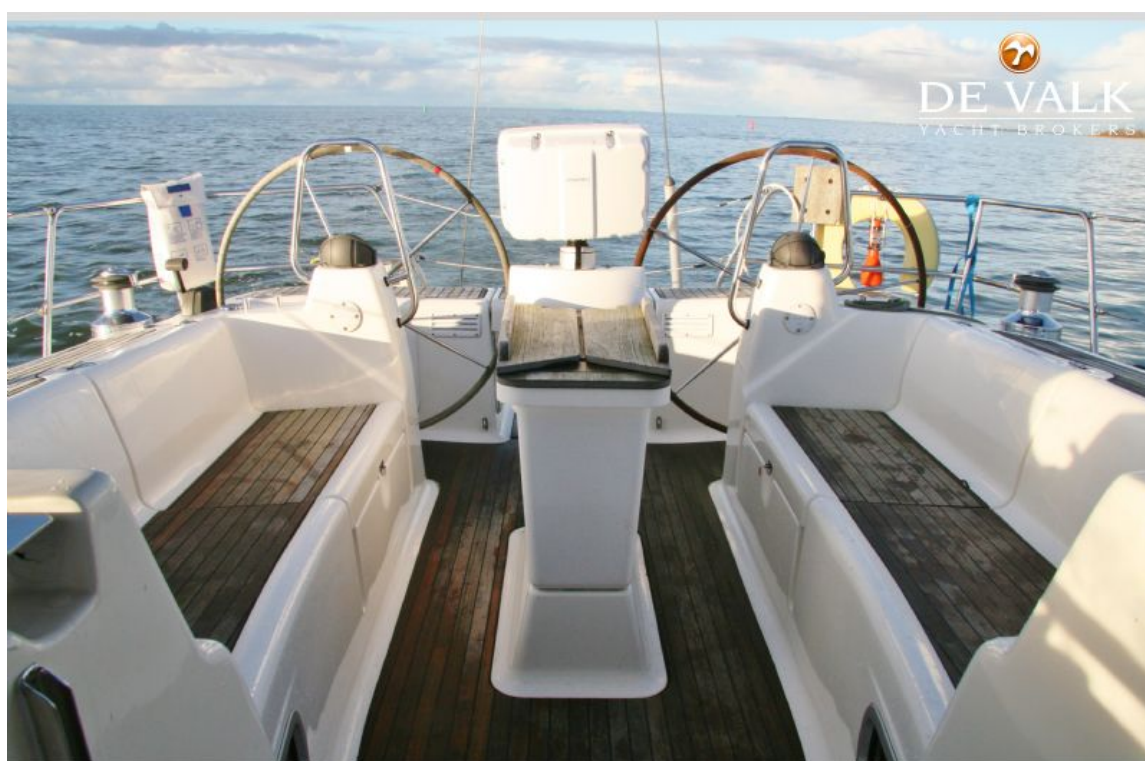
BAVARIA 50 CRUISER



BAVARIA 50 CRUISER



BAVARIA 50 CRUISER



BAVARIA 50 CRUISER



BAVARIA 50 CRUISER



BAVARIA 50 CRUISER



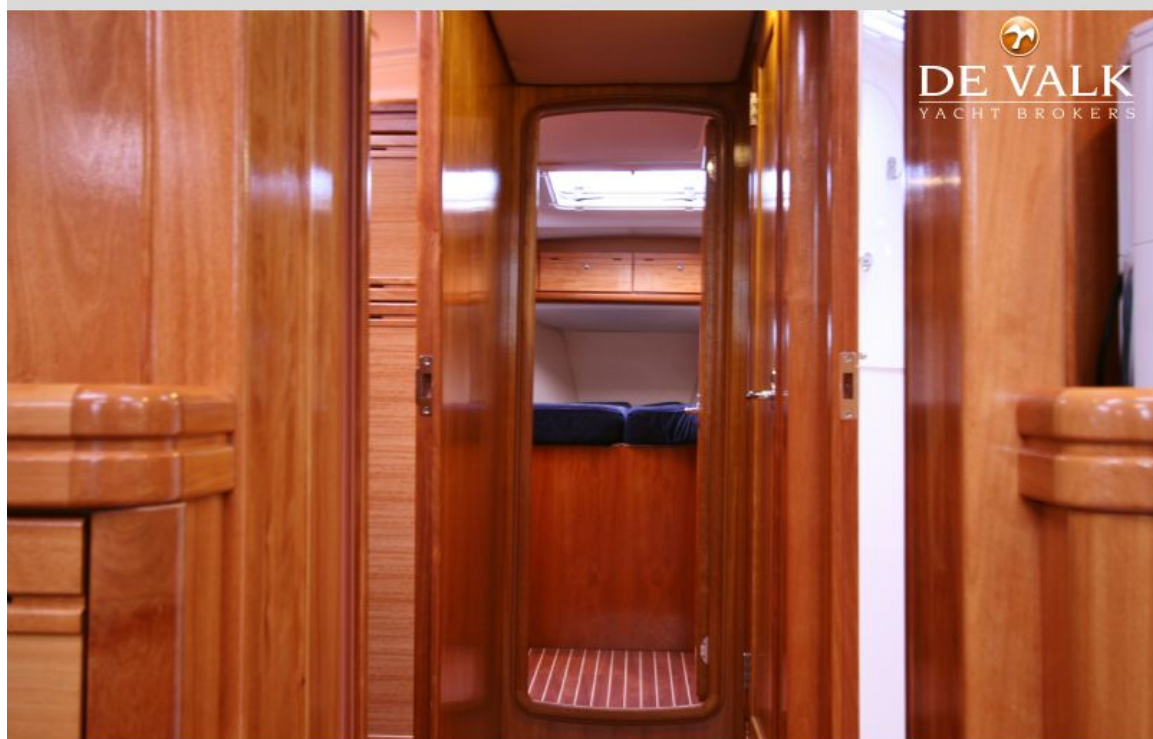
BAVARIA 50 CRUISER



BAVARIA 50 CRUISER



BAVARIA 50 CRUISER



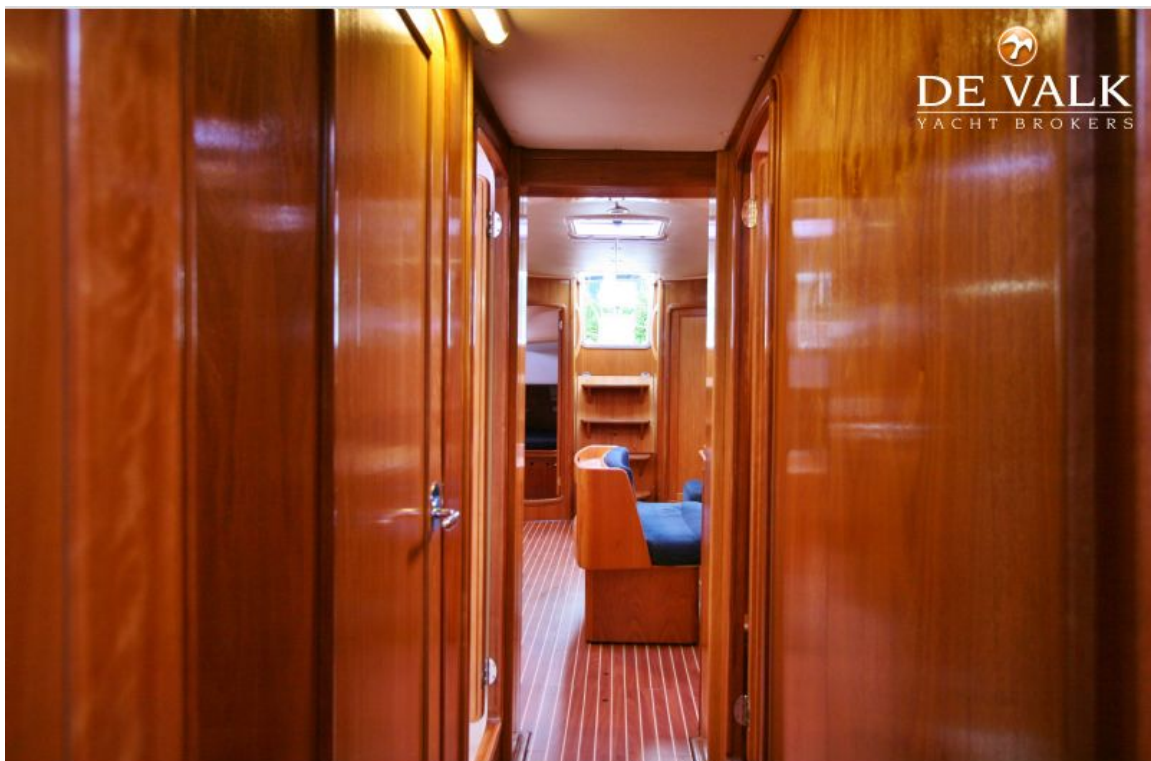
BAVARIA 50 CRUISER



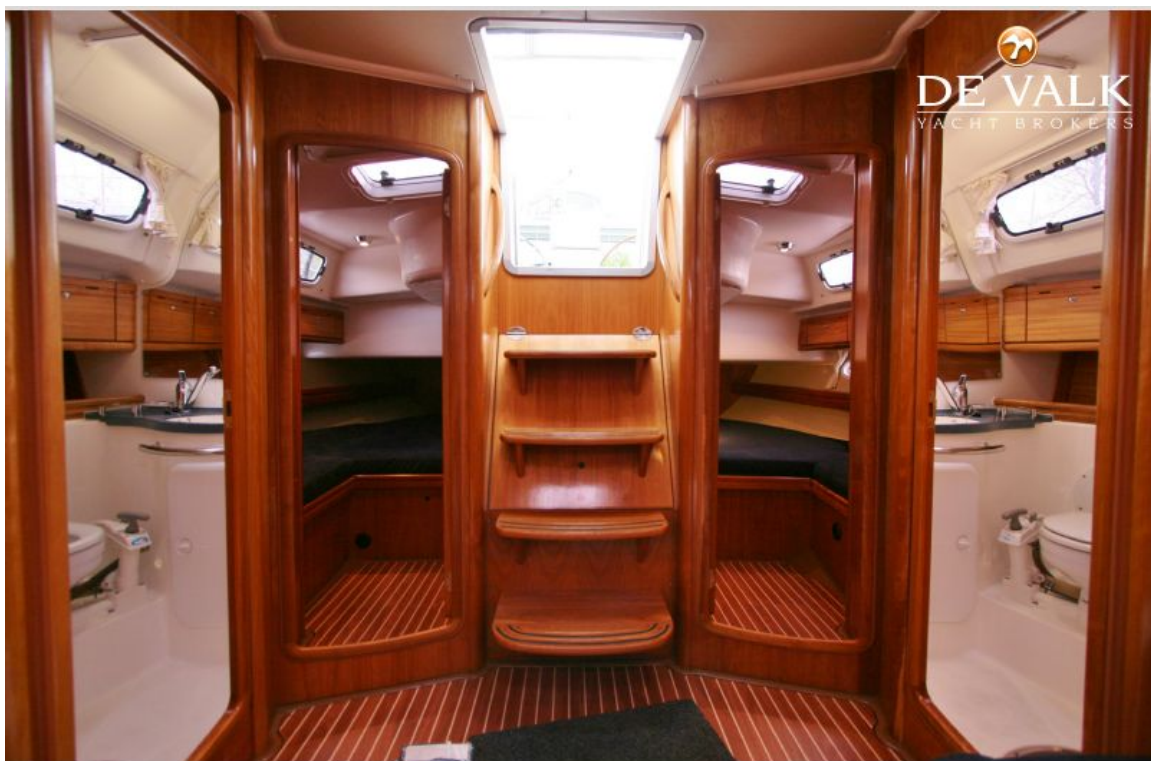
BAVARIA 50 CRUISER



BAVARIA 50 CRUISER



BAVARIA 50 CRUISER



BAVARIA 50 CRUISER



BAVARIA 50 CRUISER

