



CABO RICO NORTHEAST 400 PILOTHOUSE



CABO RICO NORTHEAST 400 PILOTHOUSE

BROKER'S COMMENTS

The Cabo Rico NE400 is a most impressively-built Motorsailer designed by marine architect Mark Ellis (who has recently purchased a NE400 for personal use). This unique vessel provides 8 knot trawler speed and 7+ knots under sail. This unusual speed is due to a long waterline, fine entry, cutaway forefoot and flat sections aft. She has an exceptionally large interior and the build quality so typical of Cabo Rico. She is a handsome motorsailer with a very safe cockpit, a centre line berth in the owner's cabin and masses of storage throughout. She makes a supremely comfortable live-aboard cruiser

Johan Nooitgedagt

SPECIFICATIONS

Dimensions	12.80 x 4.20 x 1.50 (m)	Builder	Cabo Rico Custom Yachts, USA
Built	2005	Cabins	1
Material	GRP	Berths	4
Engine(s)	1 x Yanmar 4JH3-HTE diesel	Hp/Kw	100.00 (hp), 73.50 (kw)
Asking price	sold (VAT)	Lying	at sales office

CONTACT

Sales office	De Valk Hindeloopen B.V.	Telephone	+31 514 52 40 00
Address	Oosterstrand 1 8713 JS Hindeloopen NL	E-mail	hindeloopen@devalk.nl

DISCLAIMER

These particulars are given in good faith as supplied but cannot be guaranteed.



CABO RICO NORTHEAST 400 PILOTHOUSE

GENERAL

Model	CABO RICO NORTHEAST 400 PILOTHOUSE
Type	motorsailer
LOA (m)	12,80
LWL (m)	10,40
Beam (m)	4,20
Draft (m)	1,50
Air draft (m)	17,50
Headroom (m)	2,00
Year built	2005
Builder	Cabo Rico Custom Yachts, USA
Country	Costa Rica
Designer	Mark Ellis
Displacement (t)	9,93
Ballast (tonnes)	lead in GRP 2,8
CE norm	NA
Hull material	GRP
Hull colour	blue
Hull thickness (mm)	29
Hull shape	round-bilged
Keel type	fin keel with bulb Fin Keel with skeg mounted rudder
Superstructure material	GRP
Rubbing strake	stainless steel
Deck material	GRP
Deck finish	non-skid moulded in
Superstructure deck finish	non-skid moulded in
Cockpit deck finish	non-skid moulded in
Antifouling (year)	2015 (new winter 2017)
Dorades	1x stainless steel
Window frame	aluminium 9x
Window material	tempered glass



CABO RICO NORTHEAST 400 PILOTHOUSE

Deckhatch	6x
Portholes	stainless steel 6x
Fuel tank (litre)	aluminium 284
Fuel tank 2 (litre)	aluminium 284
Level indicator (fuel tank)	yes
Freshwater tank (litre)	aluminium Two tanks 833 total
Level indicator (freshwater)	yes
Blackwater tank (litre)	GRP
Level indicator (blackwater)	yes
Blackwater tank extraction	deck extraction + uw line
Inside helm position	Hydraulic
Outside helm position	cable steering Edson - Wheel steering
Emergency tiller	yes

ACCOMMODATION

Cabins	1
Berths	4
Interior	teak
Floor	teak and holly
Open cockpit	yes
Pilot house/deck saloon	yes
Saloon	With 2 stowed teak & holly inlaid folding tables
Headroom saloon (m)	2+
Heating	CruisAir reverse cycle - 110V
Heating 2	2x 110V radiators + simulated fireplace
Air-conditioning	reverse cycle airco CruisAir
Navigation center	yes
Chart table	yes
Convertible berth	yes
Sliding door to cockpit	yes
Galley	yes



CABO RICO NORTHEAST 400 PILOTHOUSE

Countertop	corian
Sink	stainless steel Double / with corian covers
Cooker	calor gas Force 10 - 3 burner with oven
Gas alarm	yes
Microwave	Emerson 120 VAC
Fridge	Nova Kool - 12V - top loading
Hot water system	by engine 110V
Water pressure system	electrical Pressure tank
Manual and/or foot pump	yes
Kettle	Bodum
Coffee maker	Cuisinart + one spare
Owners cabin	French bed
Bed length (m)	2+
Wardrobe	hanging/drawers/shelves
Bathroom	shared
Toilet	Vetus
Toilet system	electric
Wash basin	yes
Shower	yes
Extra info	European VAT paid

MACHINERY

No of engines	1
Make	Yanmar
Type	4JH3-HTE
HP	100
kW	73,50
Fuel	diesel
Year installed	2005
Year of overhaul	2012
Maximum speed (kn)	8,5



CABO RICO NORTHEAST 400 PILOTHOUSE

Cruising speed (kn)	7
Consumption (l/hr)	4 @ 2800 Rpm
Range (nm)	950
Engine hours	3357
Engine cooling system	freshwater heat exchanger
Drive	shaft
Engine controls	bowden cable
Gearbox	mechanical
Bowthruster	electric Side-power, yoggle control + wireless remote
Exhaust	watercooled
Propeller type	fixed
Propeller blades	3
Propeller shaft material	stainless steel
Shaft lubrication	water
Manual bilge pump	yes
Electric bilge pump	yes
Bilge alarm	yes
Electrical installation	12 /110V
Generator	wet exhaust Entec West - EW4200D - 4,2kw with sound shield
Running hours generator	1033
Start battery	1x lifeline AMG
Service battery	4x 125 Ah lifeline AMG
Bowthruster battery	Start battery AGM
Windlass battery	Service battery AGM
Battery monitor	Victron energy Multiplus 3000 with digital multi control
Battery charger/inverter	Victron energy MultiPlus 3000
Diode battery combiners	yes
Shorepower	with cable
Insulation transformer	yes
Watermaker	Wired & plumbed - no watermaker installed



CABO RICO NORTHEAST 400 PILOTHOUSE

NAVIGATION

Compass	Ritchie inside/outside helms
Depth sounder/log	2x Simrad IS15 Combi inside and outside
Windset	Simrad IS15 Wind
VHF	Icom M602 with Icom command Mic2 outside helm
VHF handheld	Icom IC-M71
Autopilot	Simrad AC20 with Simrad AP16 display + hand held remote control
Radar/GPS/plotter	Simrad CX44 inside and Simrad DS34 inside
Radio receiver	and transmitter, SSB Icom M802 with Icom AT-140 antenna tuner + pactor Modem
EPIRB	yes
Navigation lights	yes
Searchlight	Handheld
Loudhailer	Mast mounted

EQUIPMENT

Fixed windscreen	yes
Bimini	yes
Window cover	yes
Cockpit cushions	yes
Cockpit table	yes
Bathing platform	yes
Boarding ladder	wood Stainless steel and
Transom door	yes
Deck shower	yes
Anchor	Bruce
Anchor chain	80 mtr. galvanized chain
Anchor 2	CQR Plough
Anchor chain	33 mtr. galvanized chain + 70 mtr. nylon line
Other ground tackle	Mud anchor



CABO RICO NORTHEAST 400 PILOTHOUSE

Windlass	electrical Lewmar vertical shaft
Deck wash	yes
Davits	stainless steel Kato Marine 2012
Davits controls	manual
Sea railing	wire
Grab rail (superstructure)	stainless steel
Railing side opening gates	yes
Pushpit	yes
Pulpit	yes
Lifejackets	6x
Wiper	yes
Horn	Hand held
Fenders	14
Mooring lines	15
Spare parts	+ pumps
Radio-cd player	Sony CDX-M10 with Bose speakers
Sub-woofer	Kenwood KAC-8402 Amplifier
Speakers in salon	yes
Clock - barometer	yes
Fire extinguisher	3x
Extra info	Life sling
Extra info	Dickinson gas barbeque with removable mount on swim platform

RIGGING

Rigging	sloop
Standing rigging	wire
Brand mast	Charelston Spars
Material mast	aluminium coated
Spreaders	One pair
Mainsail	Doyle Sails with UV barrier - 2005
Stoway mast	yes



CABO RICO NORTHEAST 400 PILOTHOUSE

Genoa	Doyle Sails - 2005
Genoa furler	Schaefer System 2100
Reefing System	main in-mast furling
Boomvang	mechanical and tackle
Primary sheet winch	2x Lewmar 48 / 2 speed self tailing
Secondary sheet winch	1x Lewmar 30
Halyard winches	2x Lewmar 40 / 2 speed self tailing
Winchcovers	yes
Isolated backstay	yes
Extra info	Insulated SSB antenna



CABO RICO NORTHEAST 400 PILOTHOUSE



CABO RICO NORTHEAST 400 PILOTHOUSE



CABO RICO NORTHEAST 400 PILOTHOUSE



CABO RICO NORTHEAST 400 PILOTHOUSE



CABO RICO NORTHEAST 400 PILOTHOUSE



CABO RICO NORTHEAST 400 PILOTHOUSE



CABO RICO NORTHEAST 400 PILOTHOUSE



CABO RICO NORTHEAST 400 PILOTHOUSE



CABO RICO NORTHEAST 400 PILOTHOUSE



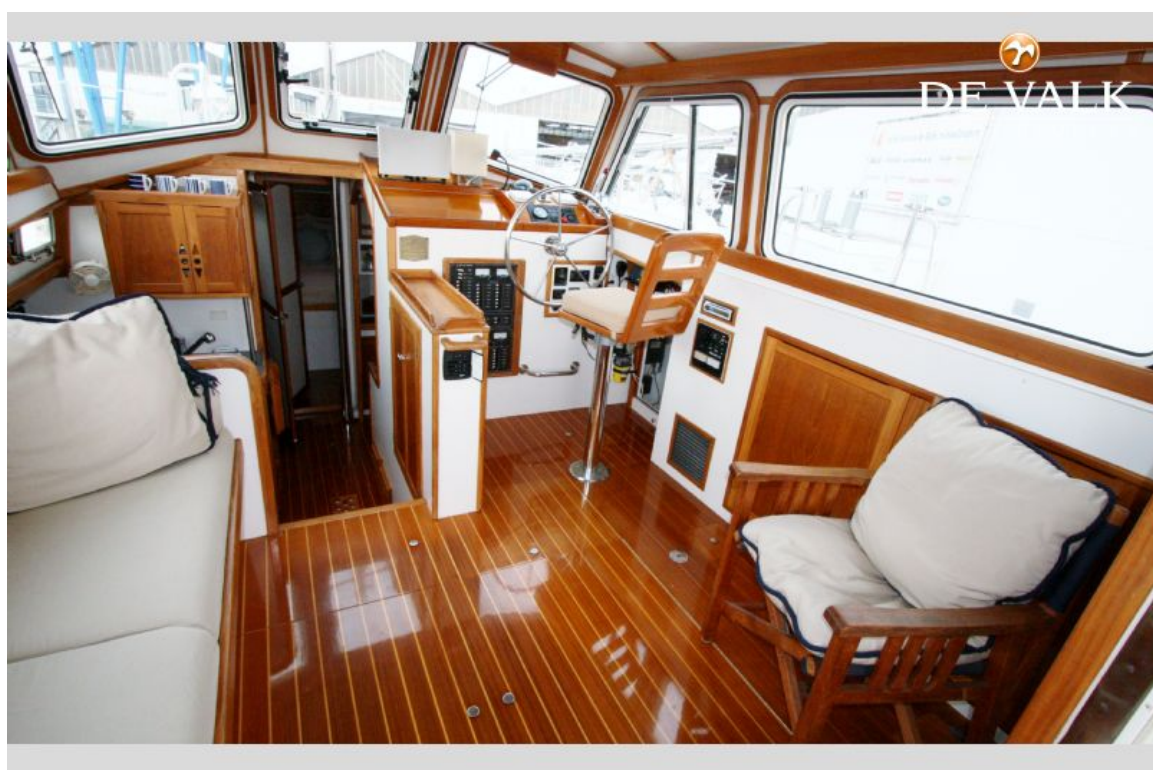
CABO RICO NORTHEAST 400 PILOTHOUSE



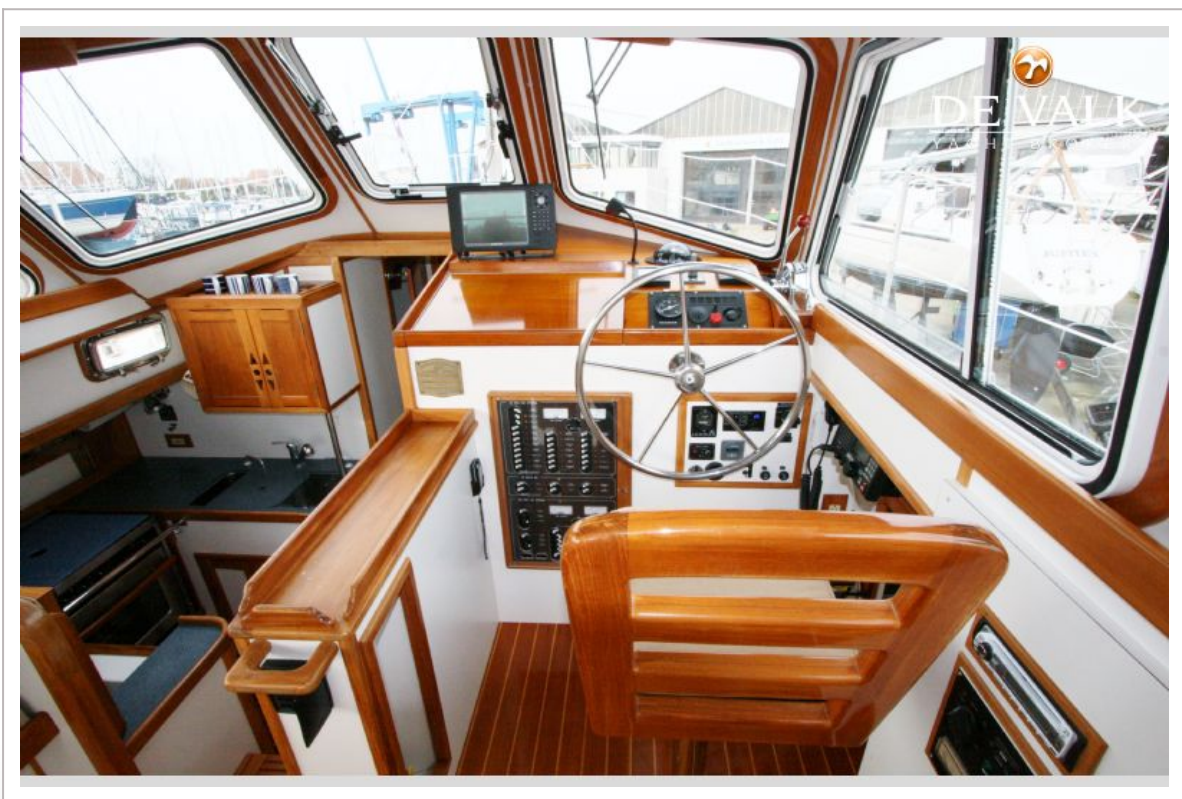
CABO RICO NORTHEAST 400 PILOTHOUSE



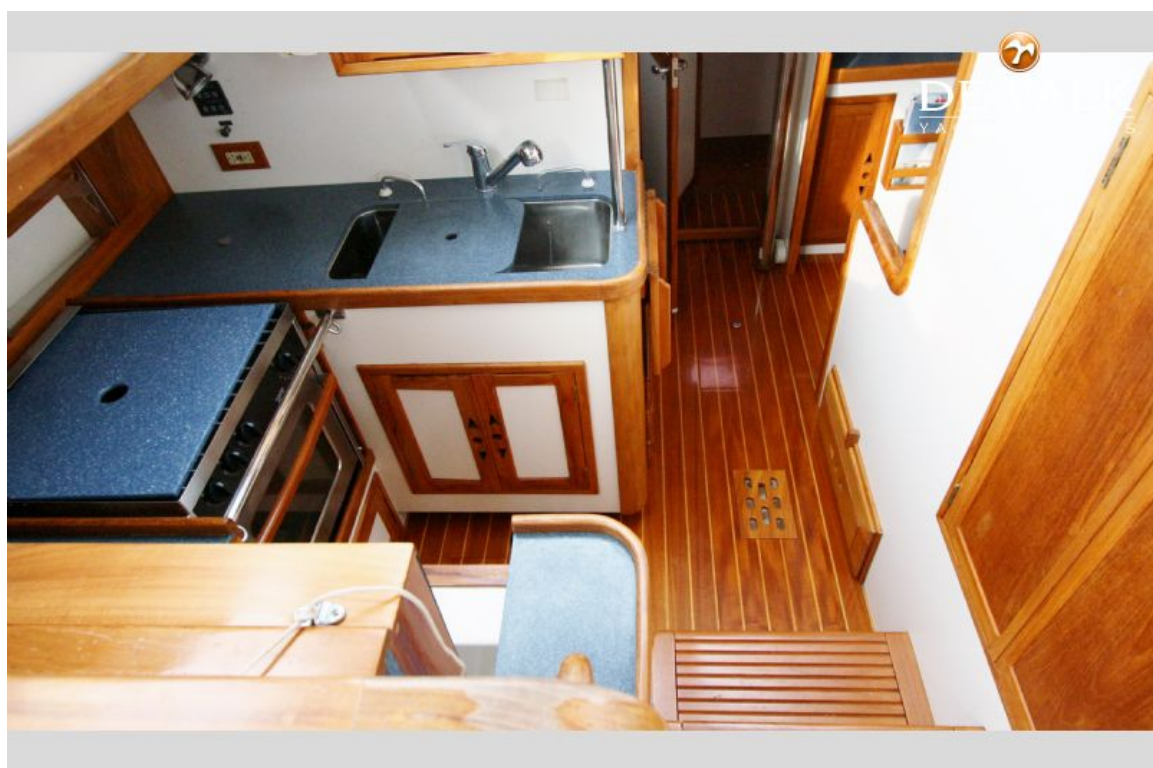
CABO RICO NORTHEAST 400 PILOTHOUSE



CABO RICO NORTHEAST 400 PILOTHOUSE



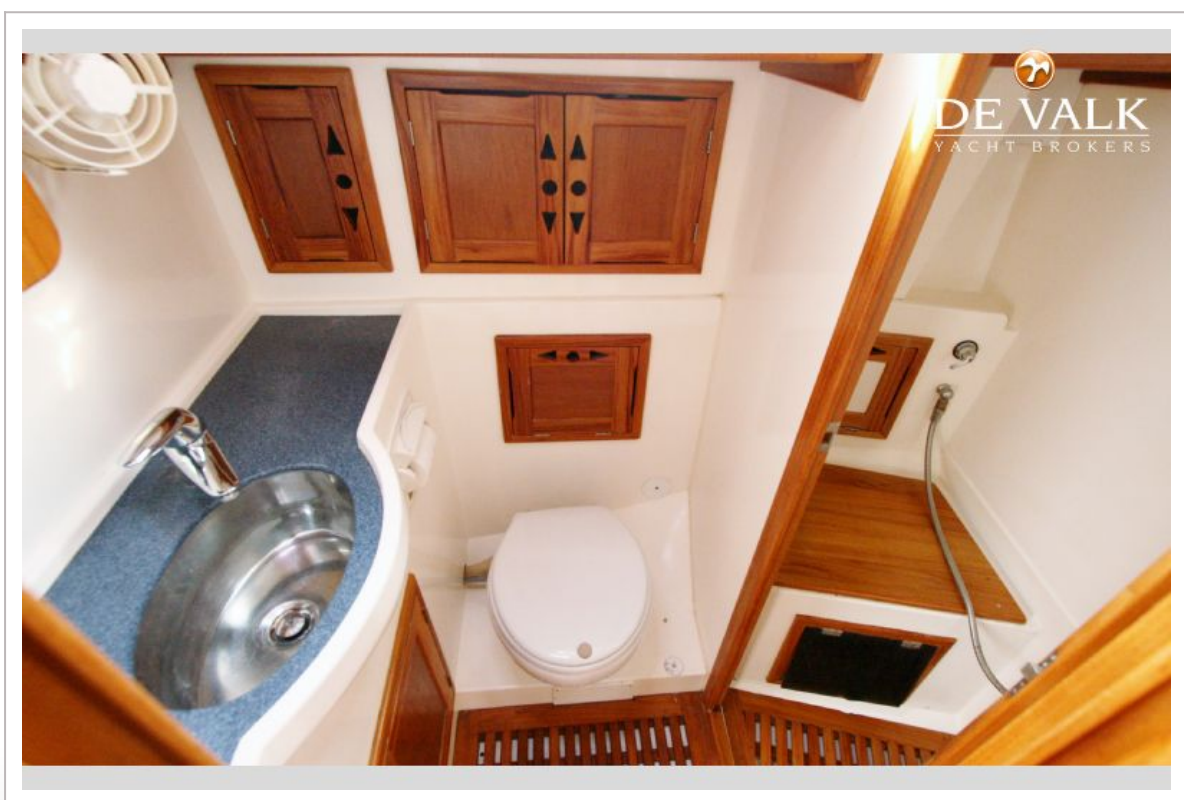
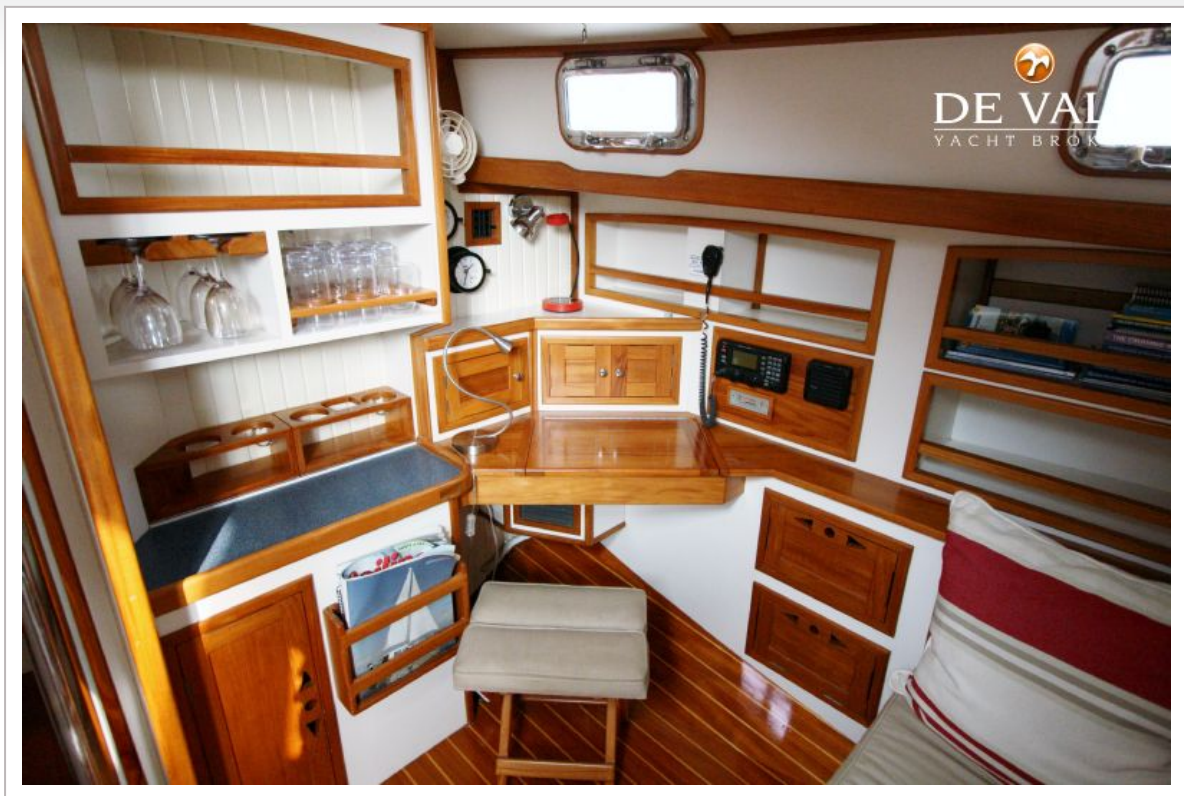
CABO RICO NORTHEAST 400 PILOTHOUSE



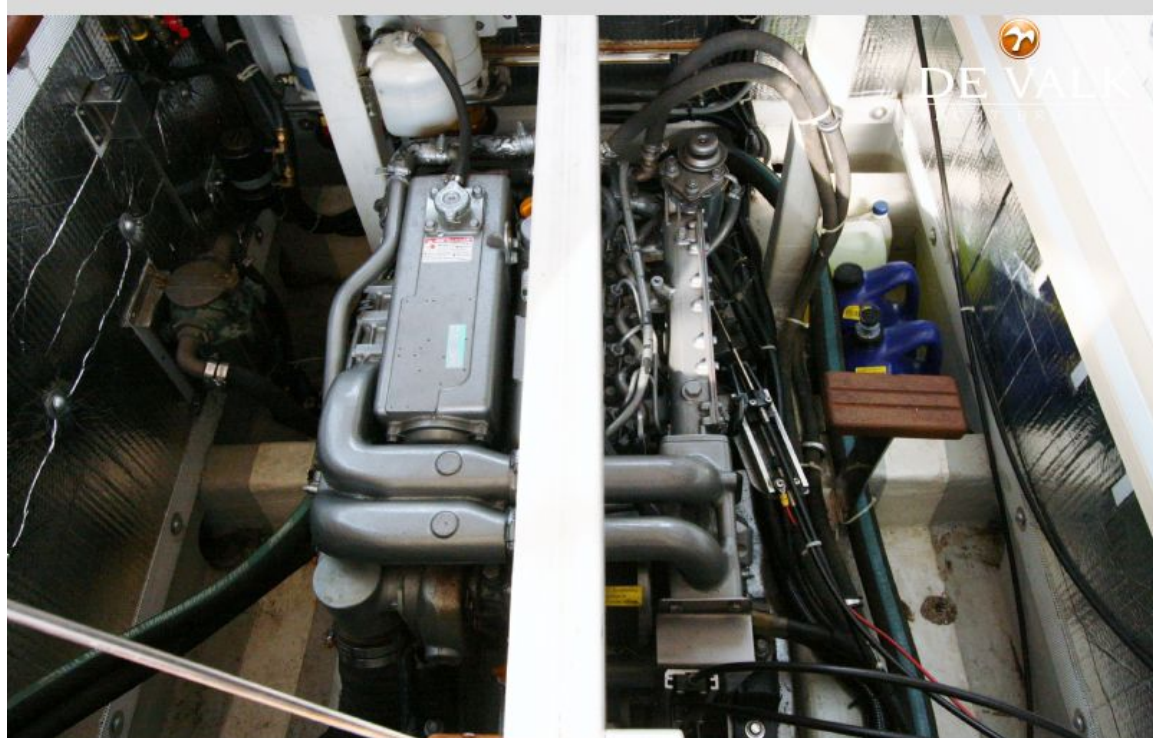
CABO RICO NORTHEAST 400 PILOTHOUSE



CABO RICO NORTHEAST 400 PILOTHOUSE



CABO RICO NORTHEAST 400 PILOTHOUSE



CABO RICO NORTHEAST 400 PILOTHOUSE

