



DE VALK  
YACHT BROKERS



## ISLAND PACKET 440



DE VALK  
YACHT BROKERS

# ISLAND PACKET 440

## BROKER'S COMMENTS

The Island Packet range is quite unique. Their designer Bob Johnson succeeded in designing a well balanced blue water cruising yacht. It is loaded with innovations above and below deck, all combine to provide superior sea keeping and delightful sailing qualities that will be appreciated as much by the weekend sailor as by the couple cruising the world.

*Johan Nooitgedagt*

## SPECIFICATIONS

<b>Dimensions</b>	13.95 x 4.37 x 1.52 (m)	<b>Builder</b>	Island Packet Yachts
<b>Built</b>	2006	<b>Cabins</b>	2
<b>Material</b>	GRP	<b>Berths</b>	7
<b>Engine(s)</b>	1 x Yanmar 4JH3-TE diesel	<b>Hp/Kw</b>	75.00 (hp), 55.13 (kw)
<b>Asking price</b>	sold (VAT )	<b>Lying</b>	contact Hindeloopen

## CONTACT

<b>Sales office</b>	De Valk Hindeloopen B.V.	<b>Telephone</b>	+31 514 52 40 00
<b>Address</b>	Oosterstrand 1 8713 JS Hindeloopen NL	<b>E-mail</b>	hindeloopen@devalk.nl

## DISCLAIMER

These particulars are given in good faith as supplied but cannot be guaranteed.



# ISLAND PACKET 440

## GENERAL

<b>Model</b>	ISLAND PACKET 440
<b>Type</b>	sailing yacht
<b>LOA (m)</b>	13,95
<b>LWL (m)</b>	11,61
<b>Beam (m)</b>	4,37
<b>Draft (m)</b>	1,52
<b>Air draft (m)</b>	19,00
<b>Year built</b>	2006
<b>Launched</b>	July 2006
<b>Builder</b>	Island Packet Yachts
<b>Country</b>	U.S.A.
<b>Designer</b>	Bob Johnson, N.A.
<b>Displacement (t)</b>	14,5
<b>Ballast (tonnes)</b>	5,4
<b>CE norm</b>	A
<b>Hull material</b>	GRP
<b>Hull colour</b>	blue
<b>Hull shape</b>	round-bilged
<b>Keel type</b>	long keel
<b>Superstructure material</b>	GRP
<b>Rubbing strake</b>	stainless steel Teak +
<b>Deck material</b>	GRP
<b>Deck finish</b>	non-skid moulded in
<b>Superstructure deck finish</b>	non-skid moulded in
<b>Cockpit deck finish</b>	non-skid moulded in
<b>Dorades</b>	3x stainless steel
<b>Window frame</b>	stainless steel
<b>Window material</b>	tempered glass
<b>Deckhatch</b>	9x Lewmar
<b>Fuel tank (litre)</b>	aluminium 606



<b>Freshwater tank (litre)</b>	GRP 984
<b>Level indicator (freshwater)</b>	Acu-gage Ultra 8
<b>Blackwater tank (litre)</b>	GRP 208
<b>Level indicator (blackwater)</b>	Acu-gage Ultra 8
<b>Wheel steering</b>	mechanical Lewmar
<b>Emergency tiller</b>	yes

## ACCOMMODATION

<b>Cabins</b>	2
<b>Berths</b>	7
<b>Interior</b>	teak
<b>Floor</b>	teak and holly
<b>Open cockpit</b>	yes
<b>Saloon</b>	yes
<b>Headroom saloon (m)</b>	1,95
<b>Heating</b>	diesel ducted hot air Webasto Air Top Evo 5500
<b>Navigation center</b>	yes
<b>Chart table</b>	yes
<b>Aft Cabin</b>	yes
<b>Convertible berth</b>	yes
<b>Galley</b>	yes
<b>Countertop</b>	corian
<b>Sink</b>	stainless steel Double
<b>Cooker</b>	calor gas Force10 - 3 burner
<b>Oven</b>	In cooker
<b>Gas alarm</b>	Trident propane control
<b>Microwave</b>	Sanyo
<b>Fridge</b>	2x Frigoboat both with temperature Control
<b>Hot water system</b>	220V + engine Seaward - 40 liter
<b>Water pressure system</b>	electrical
<b>Manual and/or foot pump</b>	yes



# ISLAND PACKET 440

<b>Owners cabin</b>	double bed Forward cabin
<b>Bed length (m)</b>	1,95
<b>Wardrobe</b>	hanging/drawers/shelves
<b>Bathroom</b>	en suite
<b>Toilet</b>	VacuFlush
<b>Toilet system</b>	vacuum
<b>Wash basin</b>	yes
<b>Shower</b>	yes
<b>Guest cabin 1</b>	double bed Aft cabin
<b>Bed length (m)</b>	1,95
<b>Wardrobe</b>	hanging and shelves
<b>Bathroom</b>	shared
<b>Toilet</b>	VacuFlush
<b>Toilet system</b>	vacuum
<b>Wash basin</b>	yes
<b>Shower</b>	yes
<b>Washing machine</b>	Candy Aqua 1000 T
<b>Extra info</b>	insect screens for all portholes, fitted blinds/ insect screens on all hatches

## MACHINERY

<b>No of engines</b>	1
<b>Make</b>	Yanmar
<b>Type</b>	4JH3-TE
<b>HP</b>	75,00
<b>kW</b>	55,13
<b>Fuel</b>	diesel
<b>Year installed</b>	2006
<b>Maximum speed (kn)</b>	8
<b>Cruising speed (kn)</b>	6
<b>Consumption (l/hr)</b>	3



# ISLAND PACKET 440

<b>Engine hours</b>	1039
<b>Engine cooling system</b>	freshwater heat exchanger
<b>Drive</b>	shaft
<b>Engine controls</b>	bowden cable
<b>Gearbox</b>	mechanical
<b>Bowthruster</b>	electric SidePower
<b>Exhaust</b>	watercooled
<b>Propeller type</b>	MaxProp
<b>Propeller blades</b>	3
<b>Propeller shaft material</b>	stainless steel
<b>Shaft lubrication</b>	water
<b>Manual bilge pump</b>	yes
<b>Electric bilge pump</b>	yes
<b>Electrical installation</b>	12 and 220V
<b>Batteries</b>	6x 100Amp
<b>Battery monitor</b>	Mastervolt
<b>Battery charger</b>	Charles 5000 SP Series - 60 Amp
<b>Inverter</b>	Mastervolt Mass Sine 12/2000
<b>Shorepower</b>	with cable
<b>Insulation transformer</b>	Mastervolt IVET-D 16/3,5
<b>Extra info</b>	Original fixed three blade propeller is under the double bed in owners cabin for emergency use

## NAVIGATION

<b>Compass</b>	Ritchie
<b>Depth sounder</b>	Raymarine ST60 DEPT
<b>Log</b>	Raymarine ST60 SPEED
<b>Windset</b>	Raymarine ST60 WIND
<b>VHF</b>	Raymarine Ray240E (inside and outside)
<b>VHF handheld</b>	Icom IC-M71
<b>Autopilot</b>	Raymarine ST7002 smart pilot - with remote control



Rudder angle indicator	On autopilot
Radar	Raymarine
Radar/GPS/plotter	Raymarine E80 outside and Raymarine E120 inside
Navtex	Furono VX-300
AIS receiver	COMAR AIS 2 USB
Navigation lights	yes

## EQUIPMENT

Sprayhood with grab rail	yes
Bimini	yes
Cockpit table	yes
Bathing platform	yes
Boarding ladder	stainless steel
Deck shower	yes
Anchor	Delta
Anchor chain	yes
Windlass	electrical Lewmar
Capstan	yes
Deck wash	yes
Outboard support	yes
Sea railing	yes
Grab rail (superstructure)	stainless steel
Railing side opening gates	yes
Pushpit	yes
Pulpit	yes
Life raft	container
Life raft (pers)	4
Last life raft survey	03-2017
Lifebuoy	yes
Radar reflector	yes
Fenders	yes



Mooring lines	yes
Spare parts	yes
TV	Hitachi TV/DVD player
Radio-cd player	JVC
Speakers in salon	yes
Clock - barometer	yes

## RIGGING

Rigging	cutter
Standing rigging	wire
Brand mast	Sparcraft Charleston Spar
Material mast	aluminium
Spreaders	2 pair
Keel stepped mast	yes
Mainsail	Doyle Loose Foot - 2009
Stoway mast	yes
Cutterstay	yes
Jib	Doyle Stay Sail
Genoa	Doyle Yankee Cut
Genoa furler	Harken MK III
Cutter furler	Harken MK III
Gennaker	Kemp Cruising Chute Full-Rad D/P CPN140 (1.5oz) Ripstop Nylon. Snuffer Size 4 manufactured from Porous Polyester, c/winter all pocket for hoist and retrieval line, Robust contoured fiberglass mouth Size 3B. Purchased March 2015, used about three times condition as new.
Reefing System	main in-mast furling
Boomvang	gasspring
Primary sheet winch	1x Lewmar 44
Genoa sheetwinches	2x Lewmar 54 (electric)
Halyard winches	Cockpit: 1x Lewmar 44 Mast: 2x Lewmar 30 + 1x Lewmar 8
Multifunctional winches	2x Lewmar 16 in cockpit





## Extra info

Doyle sails where serviced and washed by Wilkinson Sails in January 2017.



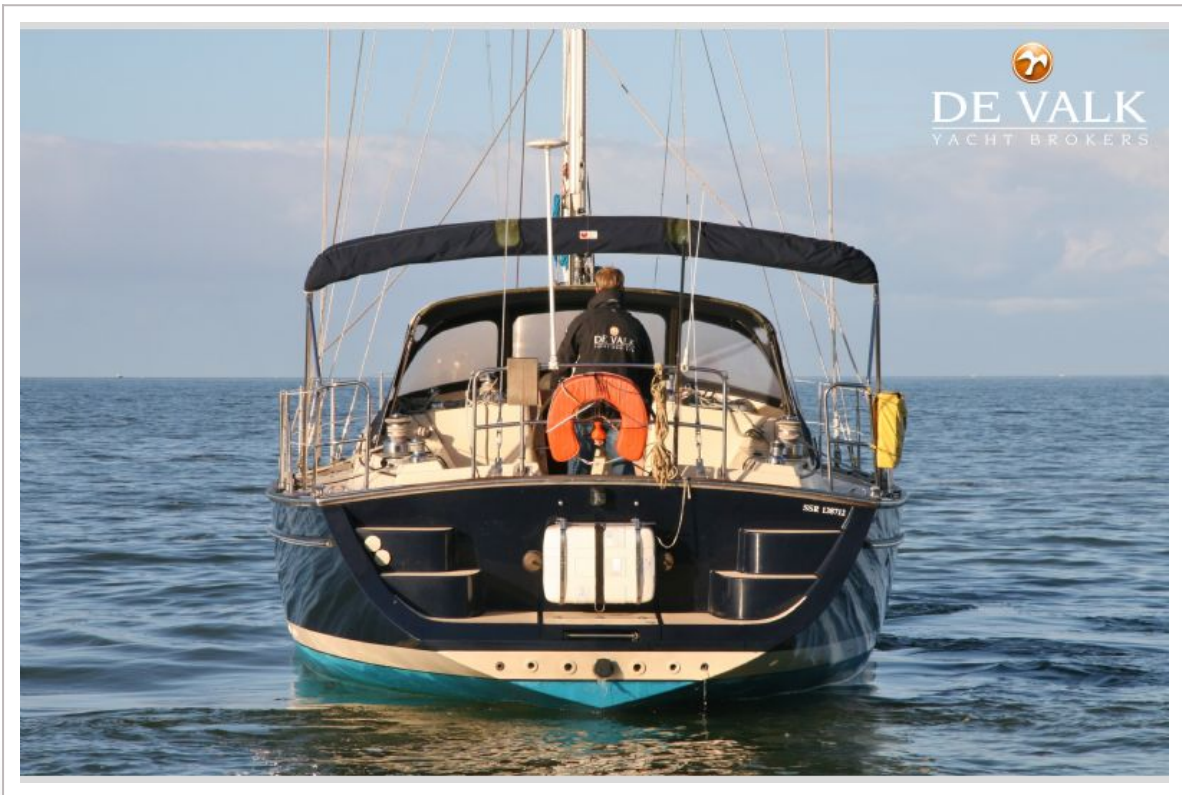
# ISLAND PACKET 440



# ISLAND PACKET 440



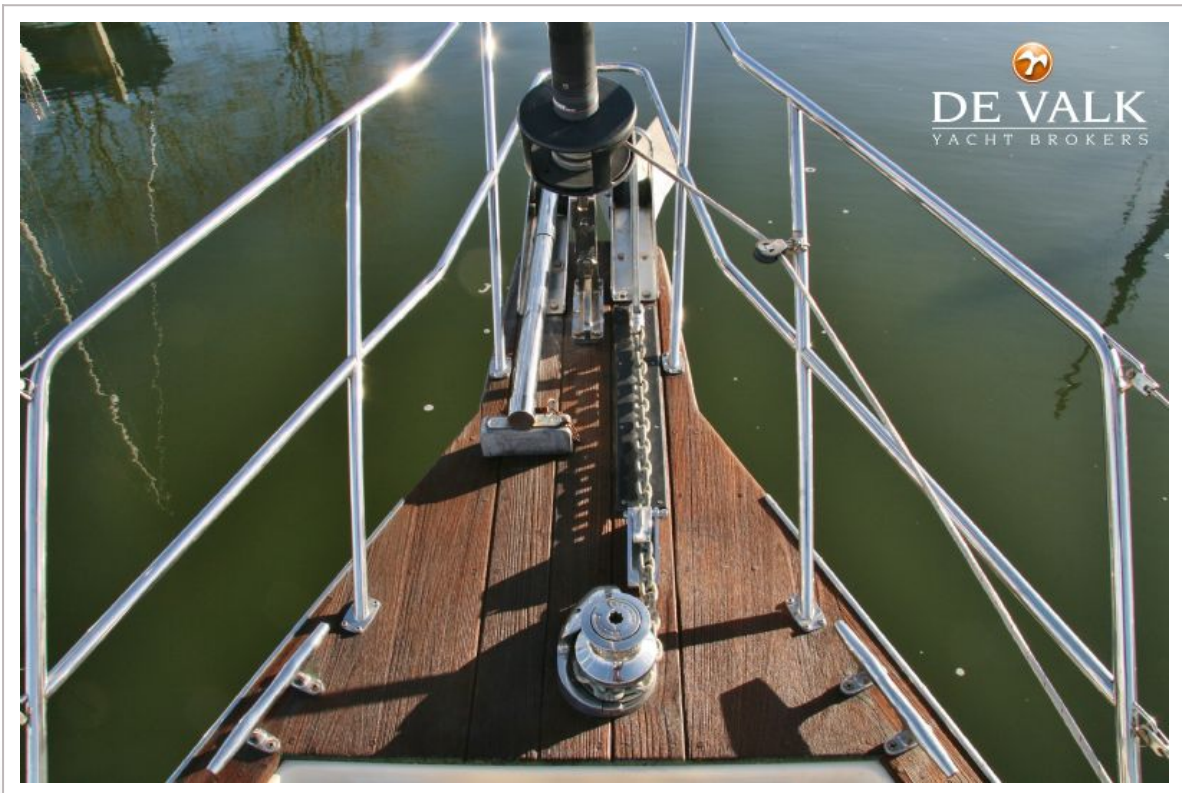
# ISLAND PACKET 440



# ISLAND PACKET 440



# ISLAND PACKET 440



# ISLAND PACKET 440



# ISLAND PACKET 440





# ISLAND PACKET 440



# ISLAND PACKET 440



# ISLAND PACKET 440



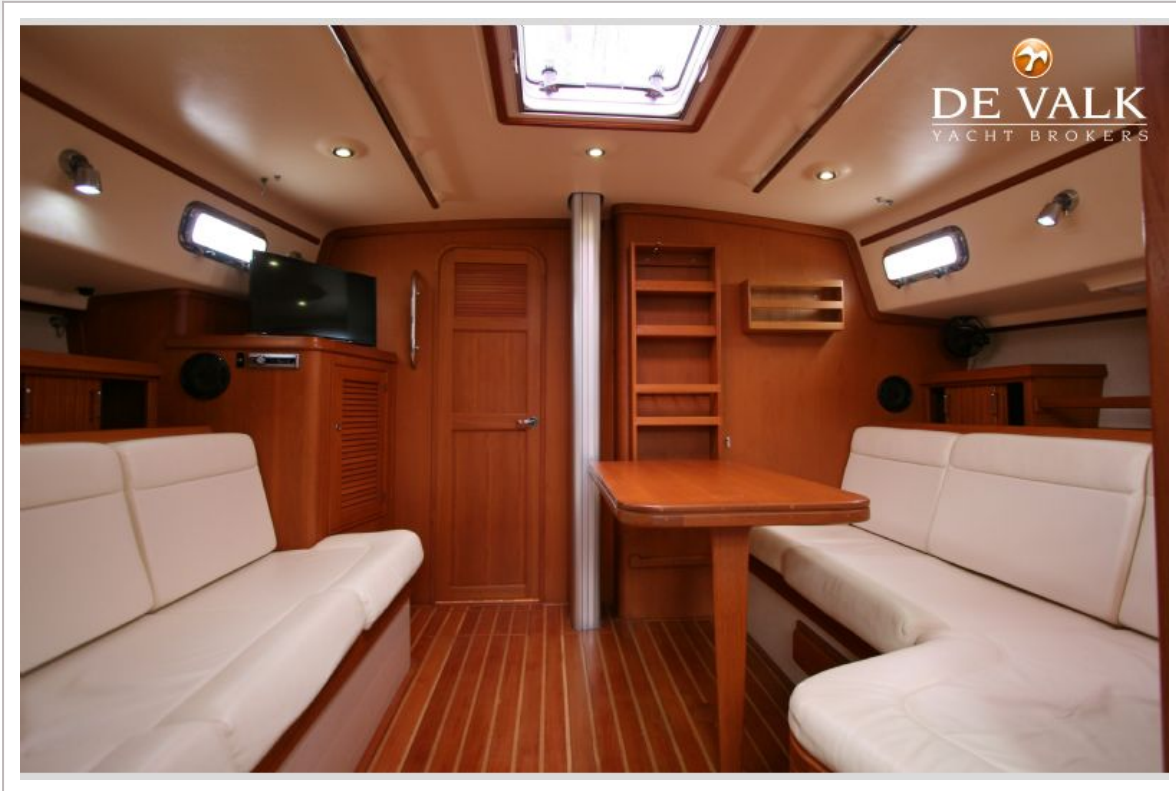
# ISLAND PACKET 440



# ISLAND PACKET 440



# ISLAND PACKET 440



# ISLAND PACKET 440

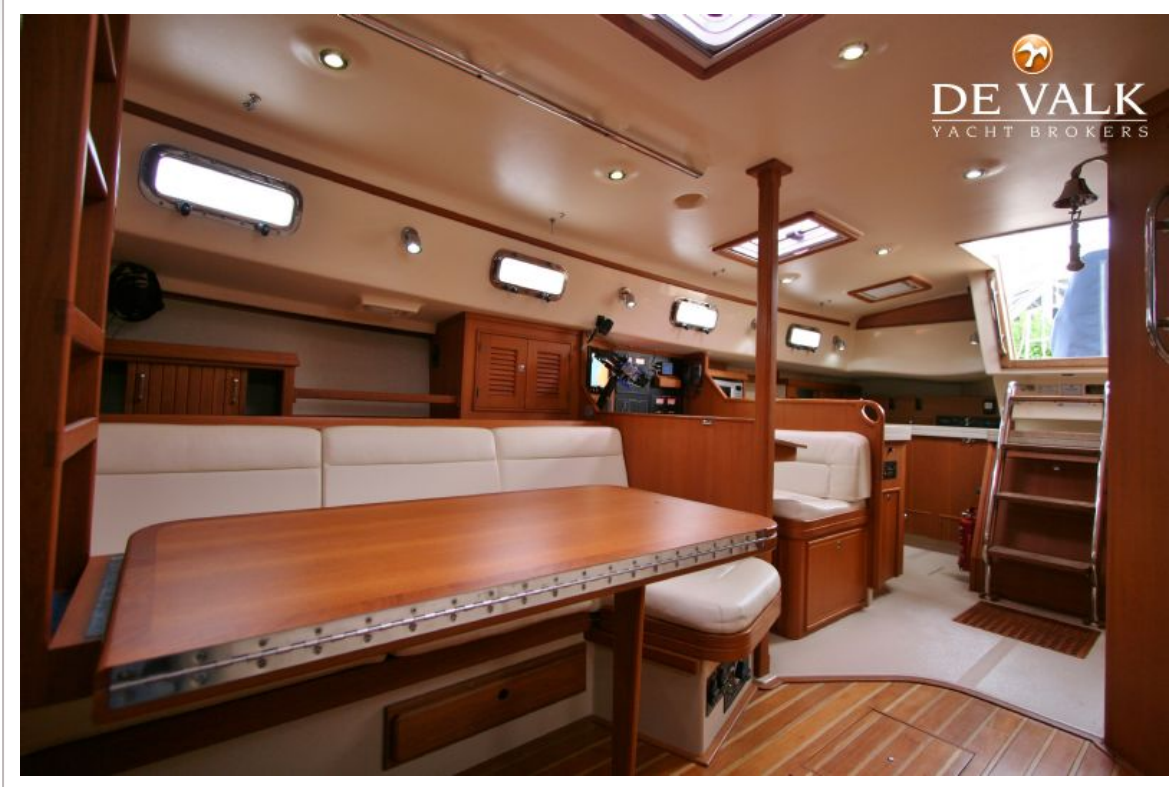


# ISLAND PACKET 440





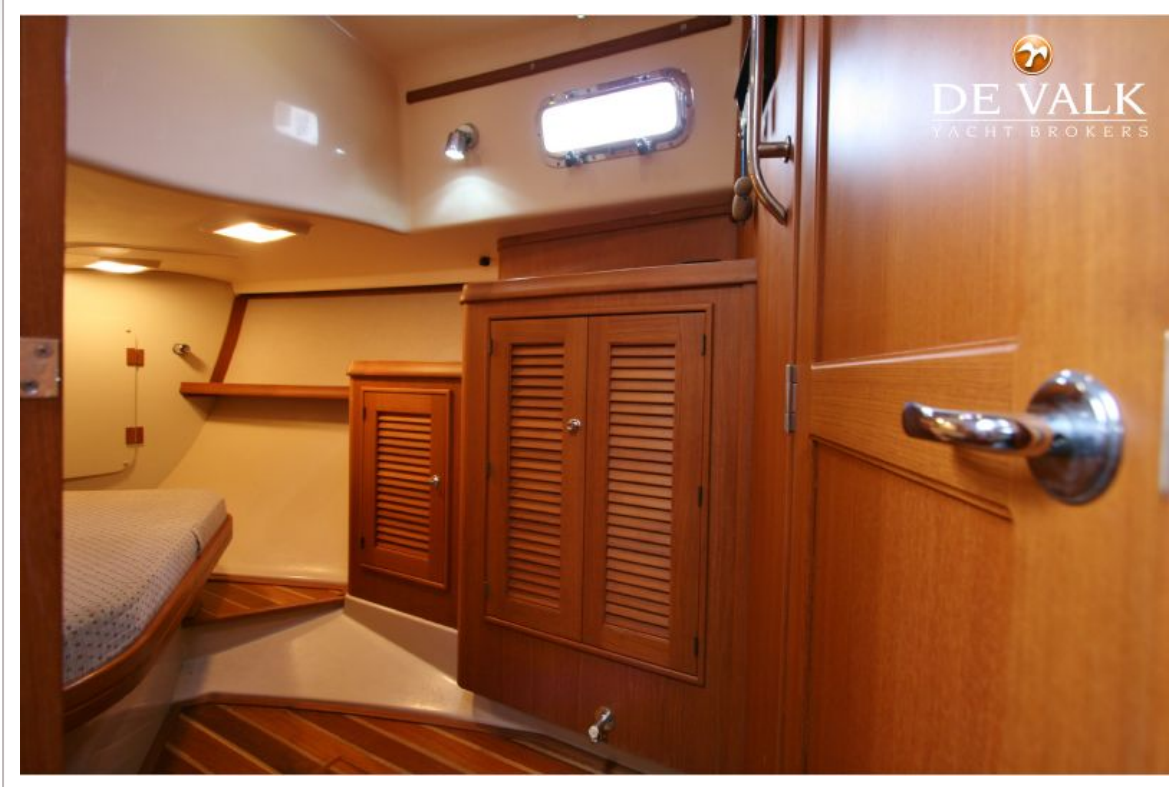
# ISLAND PACKET 440



# ISLAND PACKET 440



# ISLAND PACKET 440



# ISLAND PACKET 440

