



DE VALK  
YACHT BROKERS



PUFFIN 50



DE VALK  
YACHT BROKERS

# PUFFIN 50

## BROKER'S COMMENTS

This yacht "De Vrijheid" was built in 2002 with the aim of navigating around the world. This Puffin 50 sailed over the Mediterranean Sea, the Atlantic Ocean and the Caribbean. She is a comfortable yacht of 34 tons, has a lot of space and is well equipped. Its centerboard gives you access to shallow water and beautiful bays, which are normally not accessible to yachts of this size. You can view this Puffin 50 seven days a week at our office in Hindeloopen!

*Henri van Eelen*

## SPECIFICATIONS

<b>Dimensions</b>	17.60 x 4.95 x 1,35 / 3.20 (m)	<b>Builder</b>	De Gier en Bezaan Yachtbuilders BV
<b>Built</b>	2002	<b>Cabins</b>	3
<b>Material</b>	Steel	<b>Berths</b>	9
<b>Engine(s)</b>	1 x Deutz DTA 43 diesel	<b>Hp/Kw</b>	128.00 (hp), 94.00 (kw)
<b>Asking price</b>	sold (VAT )	<b>Lying</b>	at sales office

## CONTACT

<b>Sales office</b>	De Valk Hindeloopen B.V.	<b>Telephone</b>	+31 514 52 40 00
<b>Address</b>	Oosterstrand 1 8713 JS Hindeloopen NL	<b>E-mail</b>	hindeloopen@devalk.nl

## DISCLAIMER

These particulars are given in good faith as supplied but cannot be guaranteed.



## GENERAL

Model	PUFFIN 50
Type	sailing yacht
LOA (m)	17,60
LWL (m)	14,15
Beam (m)	4,95
Draft (m)	3,20
Draft min (m)	1,35
Air draft (m)	23,00
Year built	2002
Builder	De Gier en Bezaan Yachtbuilders BV
Country	The Netherlands
Designer	Olivier F. van der Meer, Enkhuizen
Displacement (t)	34
CE norm	A
Hull material	steel
Hull colour	green
Keel type	lifting keel
Superstructure material	steel
Rubbing strake	steel
Deck material	steel
Deck finish	teak
Superstructure deck finish	teak
Cockpit deck finish	teak
Dorades	7x
Window frame	stainless steel
Window material	tempered glass
Deckhatch	yes
Portholes	
Fuel tank (litre)	580L
Fuel tank 2 (litre)	580L



Level indicator (fuel tank)	yes
Freshwater tank (litre)	625L 2x
Level indicator (freshwater)	yes
Blackwater tank (litre)	390L
Blackwater tank extraction	
Greywater tank (litre)	500L
Level indicator (greywater)	yes
Wheel steering	hydraulic
Outside helm position	

## ACCOMMODATION

Cabins	3
Berths	9
Interior	teak Mahogany + Teak
Floor	wood
Open cockpit	yes
Aft deck	yes
Saloon	yes
Heating	stove diesel Alaska by Dickinson
Air-conditioning	reverse cycle airco Climma
Navigation center	yes
Chart table	yes
Dinette to convert into berth	yes
Galley	yes
Countertop	plastic
Sink	stainless steel
Cooker	calor gas Force Ten Marine 4 pits
Oven	yes
Microwave	Whirlpool
Fridge	Met vriesvak
Hot water system	220V + engine 60L



Water pressure system	electrical
Owners cabin	
Bed length (m)	2,0m
Wardrobe	drawers and shelves
Bathroom	en suite Wasmachine AEG
Toilet	en suite
Toilet system	manual
Wash basin	in the bathroom
Shower	en suite
Extra info	Airco bediening
Guest cabin 1	double bed
Bed length (m)	2,0m
Wardrobe	hanging
Bathroom	shared
Toilet	shared
Toilet system	manual
Wash basin	in the bathroom
Shower	shared
Extra info	Airco bediening
Guest cabin 2	double bed
Bed length (m)	2,0m
Wardrobe	hanging
Bathroom	shared
Toilet	shared
Toilet system	manual
Wash basin	in the bathroom
Shower	shared
Extra info	Airco bediening
Washing machine	yes

## MACHINERY



# PUFFIN 50

No of engines	1
Make	Deutz
Type	DTA 43
HP	128
kW	94,00
Fuel	diesel
Maximum speed (kn)	10,00
Cruising speed (kn)	7,00
Engine hours	3293
Drive	shaft
Bowthruster	electric Foot control
Electrical installation	24V/ 230V
Generator	Fisher Panda 11Kw
Batteries	16x (8 in function) 2020 4x for bowthruster etc

## NAVIGATION

Compass	Plastimo
Depth sounder/log	ST60 Tridata Raymarine
Windset	ST60 Wind Raymarine ST60 Wind display (inside)
Repeater	ST60 Multi (inside)
VHF	Ray 230E (inside) Handheld Cobra
Autopilot	ST7001+ Raymarine ST600R Raymarine Remote (inside)
Radar	RL80C Raymarine (inside)
GPS	RN 300 Raymarine
Plotter	A65 Raymarine
Navtex	yes
PC connection	Inside navigation center
AIS transponder	ICOM
Extra info	Capsat GMDSS Dual TT3626CM

## EQUIPMENT



Cockpit cover	yes
Cockpit table	yes
Boarding ladder	stainless steel
Anchor	Hall anker 38K
Anchor chain	200m
Windlass	electrical Lofrans Condor 24V
Dinghy	inflatable
Outboard	15PK
Davits	steel
Davits controls	manual
Sea railing	stainless steel
Grab rail (superstructure)	wood
Railing side opening gates	Both sides
Life raft	container
Fenders	yes
Mooring lines	yes
Radio-cd player	yes
Surround Sound System	Bose Surrounding system
Speakers in salon	yes
Speakers in cabin	yes
Clock - barometer	2x WEMPE
Extra info	Cover entrance
Extra info	yes

## RIGGING

Rigging	cutter
Standing rigging	wire
Brand mast	Hallspars
Spreaders	2x
Mainsail	63m2 Hood 2002
Mainsail cover	yes



<b>Jib</b>	50m2 Hood 2002
<b>Genoa</b>	70m2 Boomerang 2005
<b>Spinnaker</b>	140m2
<b>Stormjib</b>	13m2
<b>Backstay adjuster</b>	hydraulic
<b>Boomvang</b>	
<b>Primary sheet winch</b>	Andersen 58 ST electric
<b>Secondary sheet winch</b>	Andersen 52 ST 2x (Roof) 46ST 2x 40ST 2x 28ST 2x
<b>Halyard winches</b>	Andersen 46 ST foot/ electric 2x
<b>Spi-pole</b>	aluminium





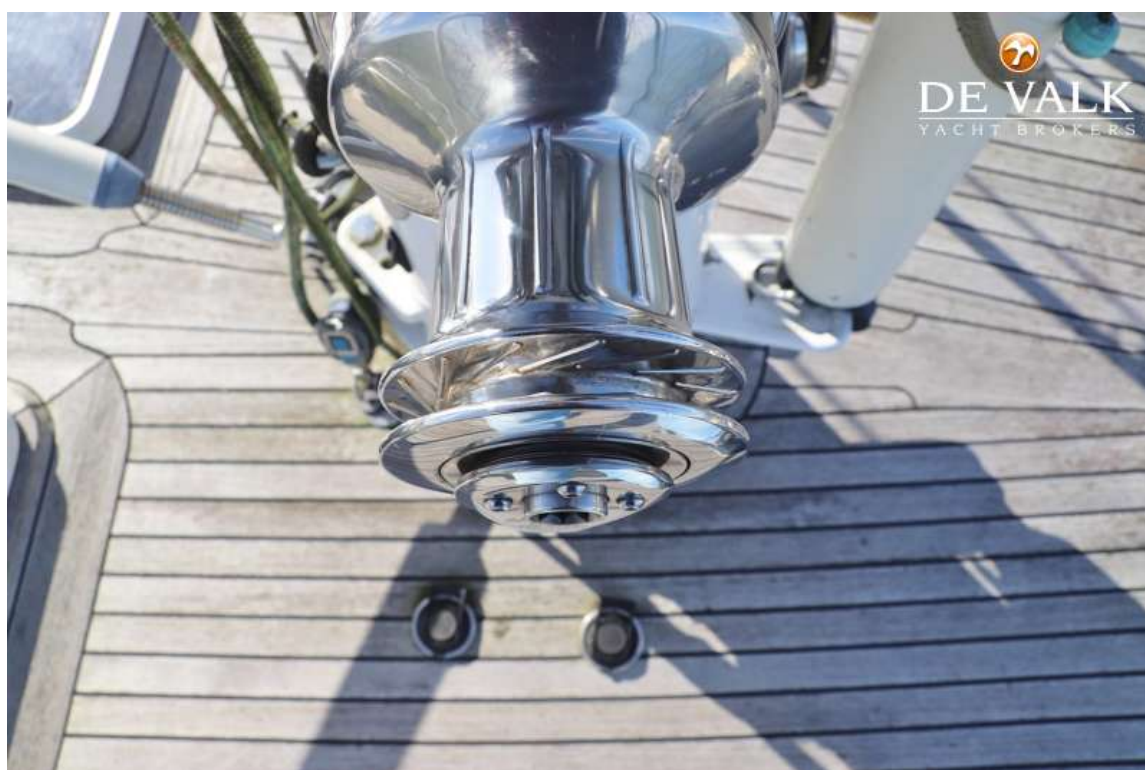


## PUFFIN 50

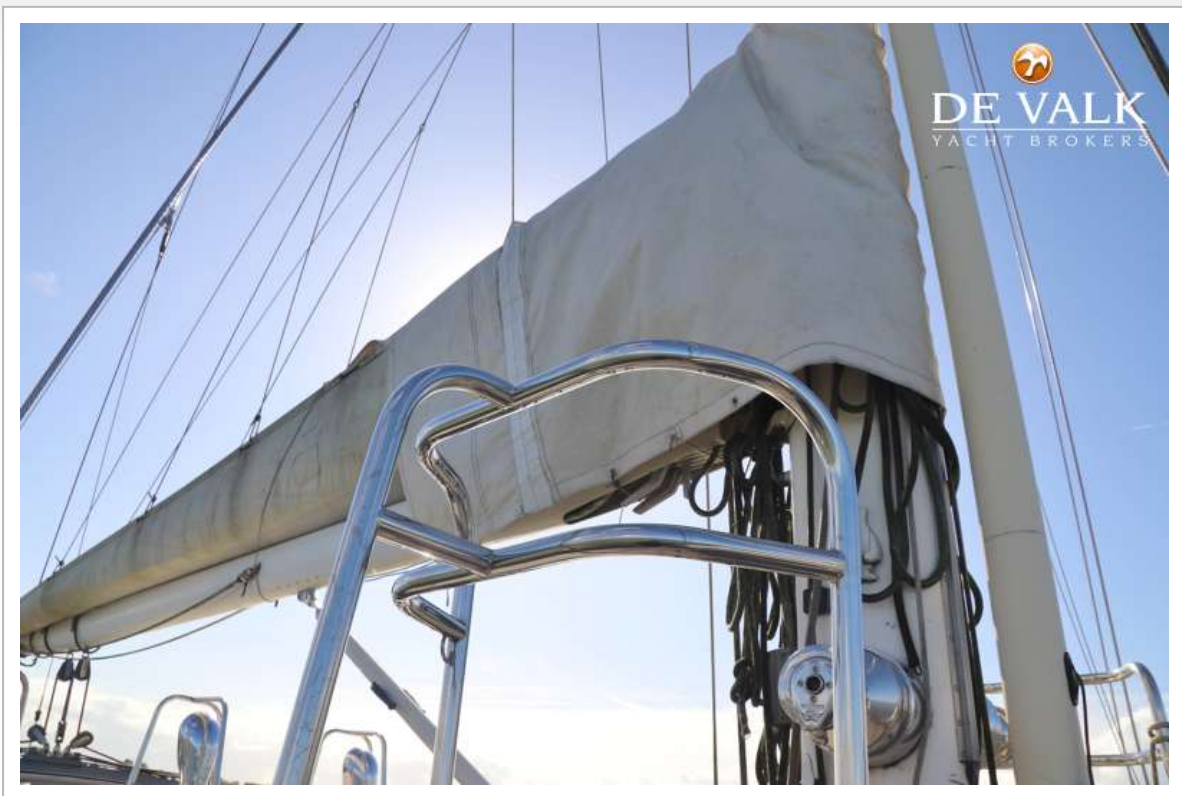




# PUFFIN 50



# PUFFIN 50

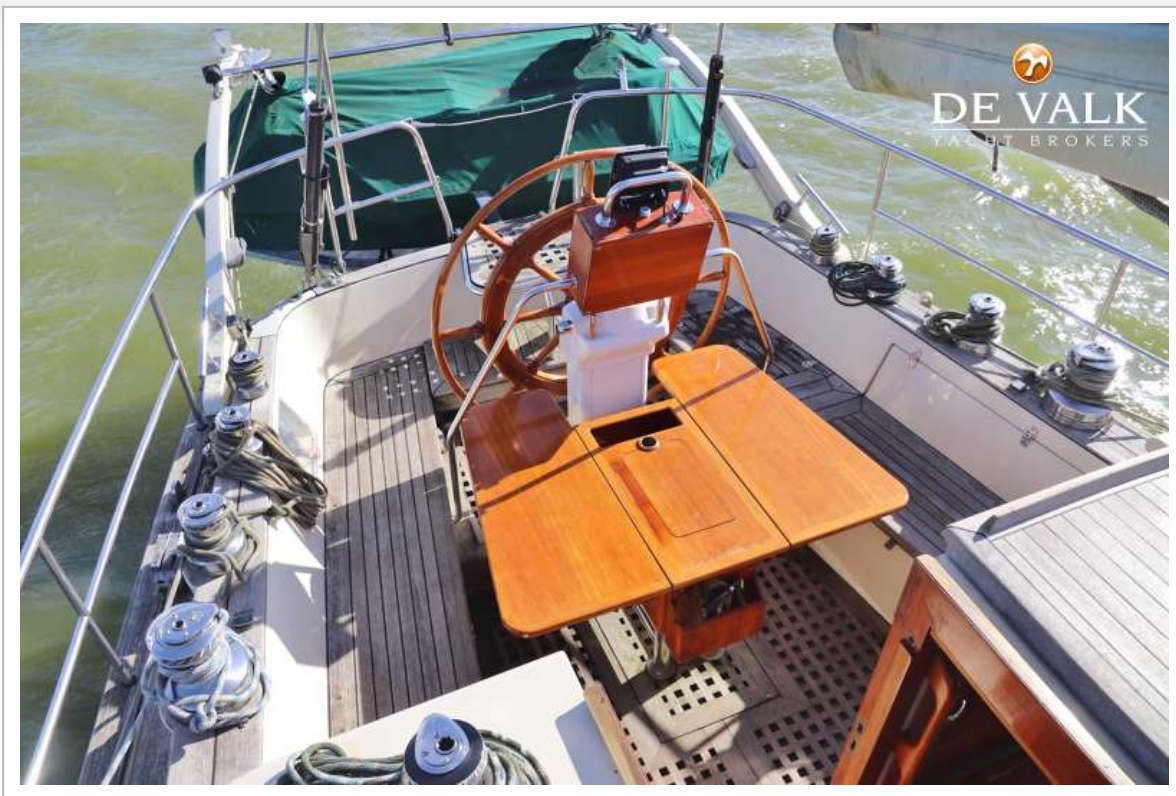




## PUFFIN 50



# PUFFIN 50





# PUFFIN 50

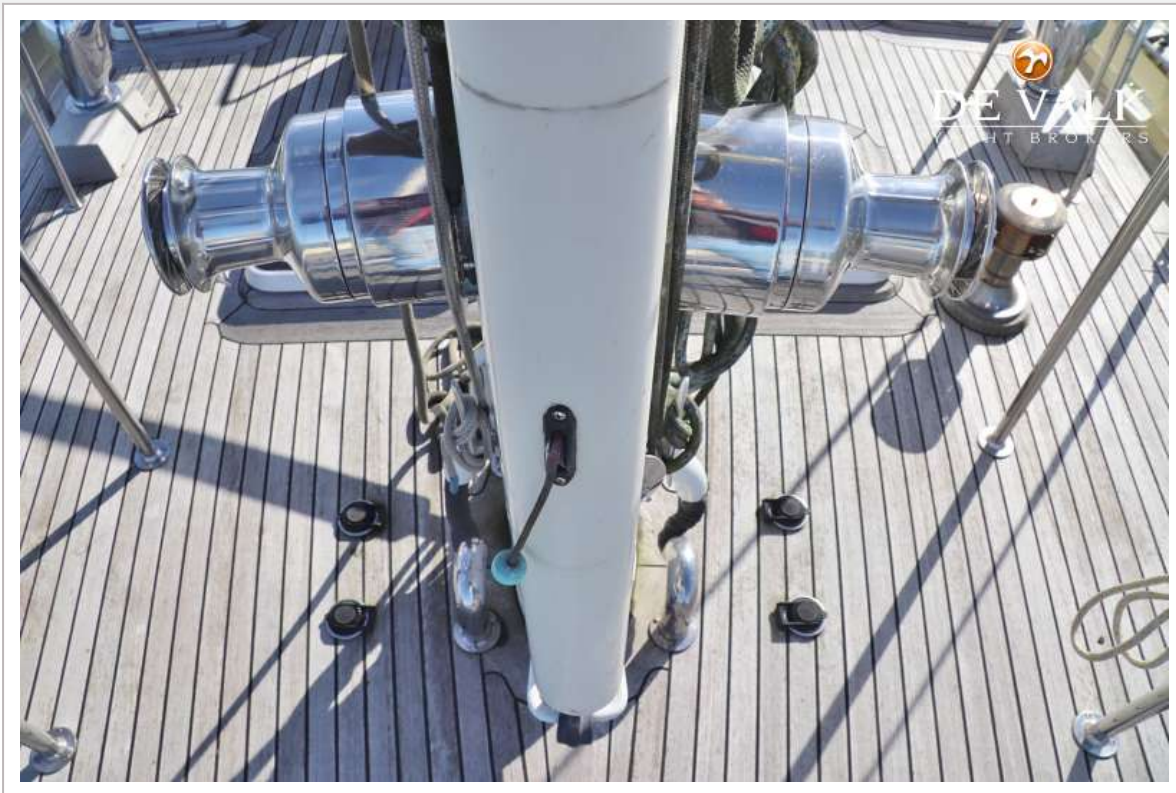


## PUFFIN 50

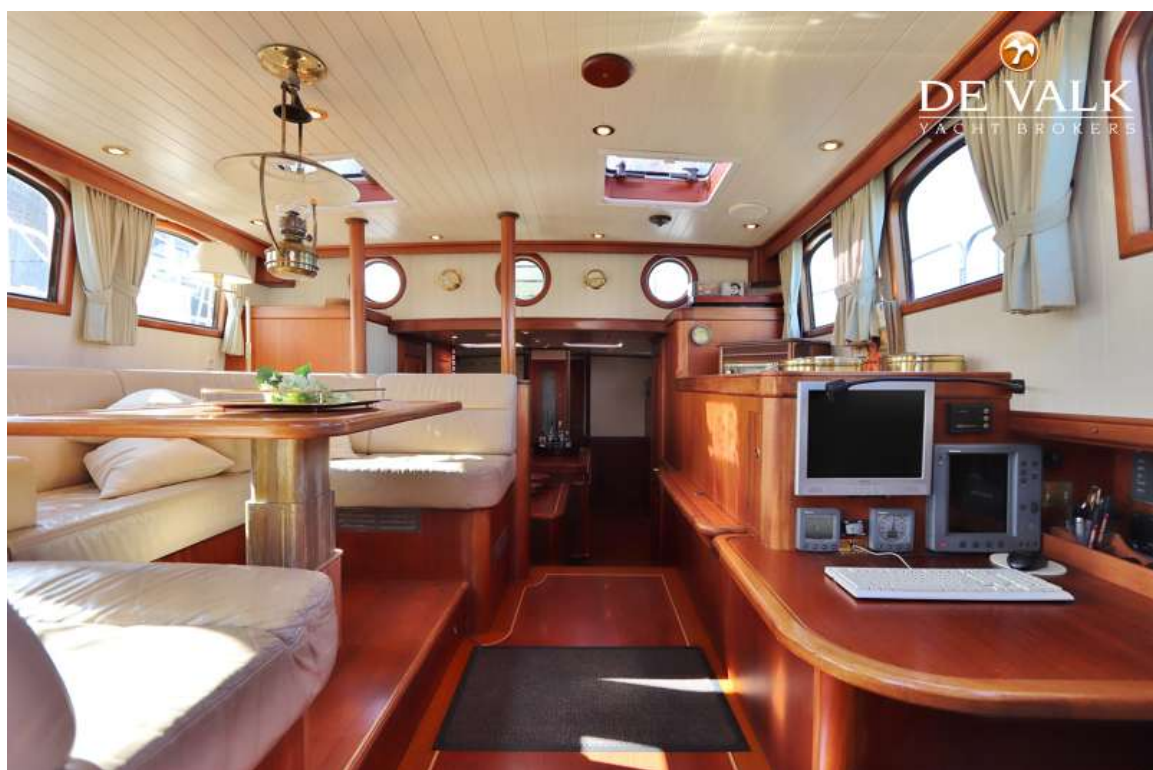




## PUFFIN 50



# PUFFIN 50

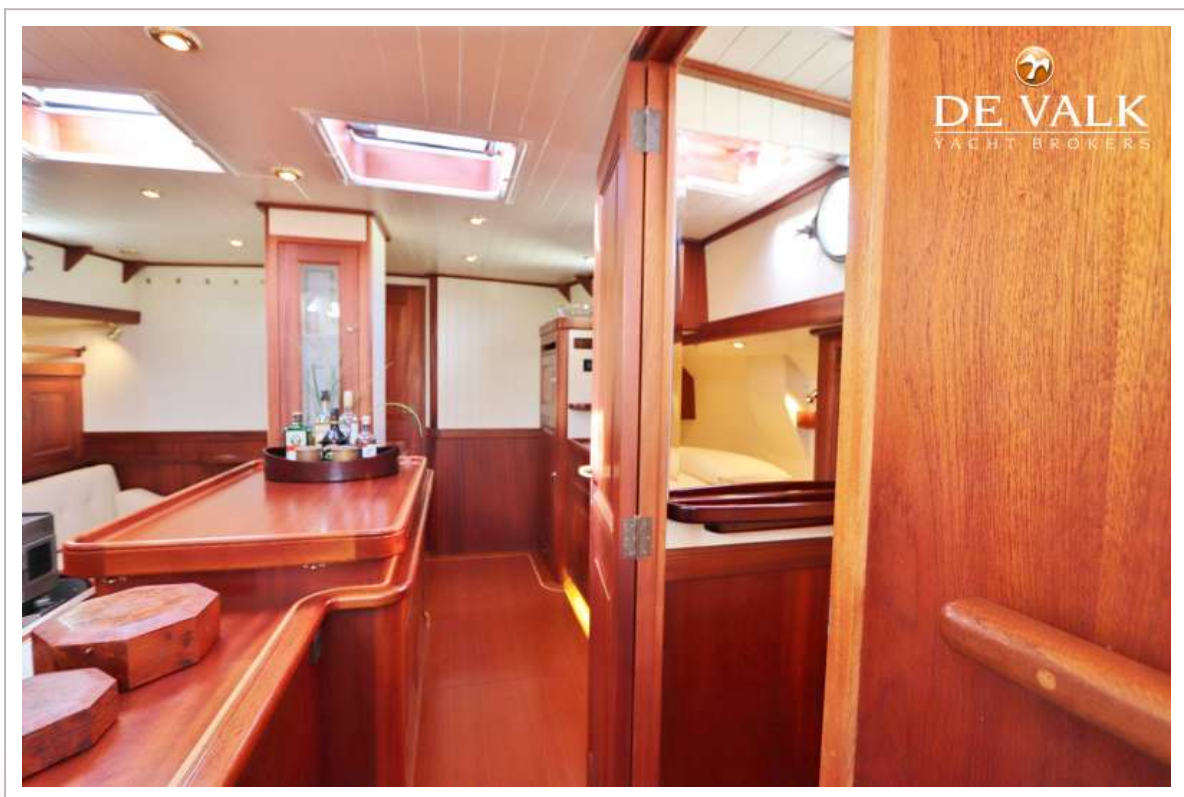




## PUFFIN 50



# PUFFIN 50





## PUFFIN 50

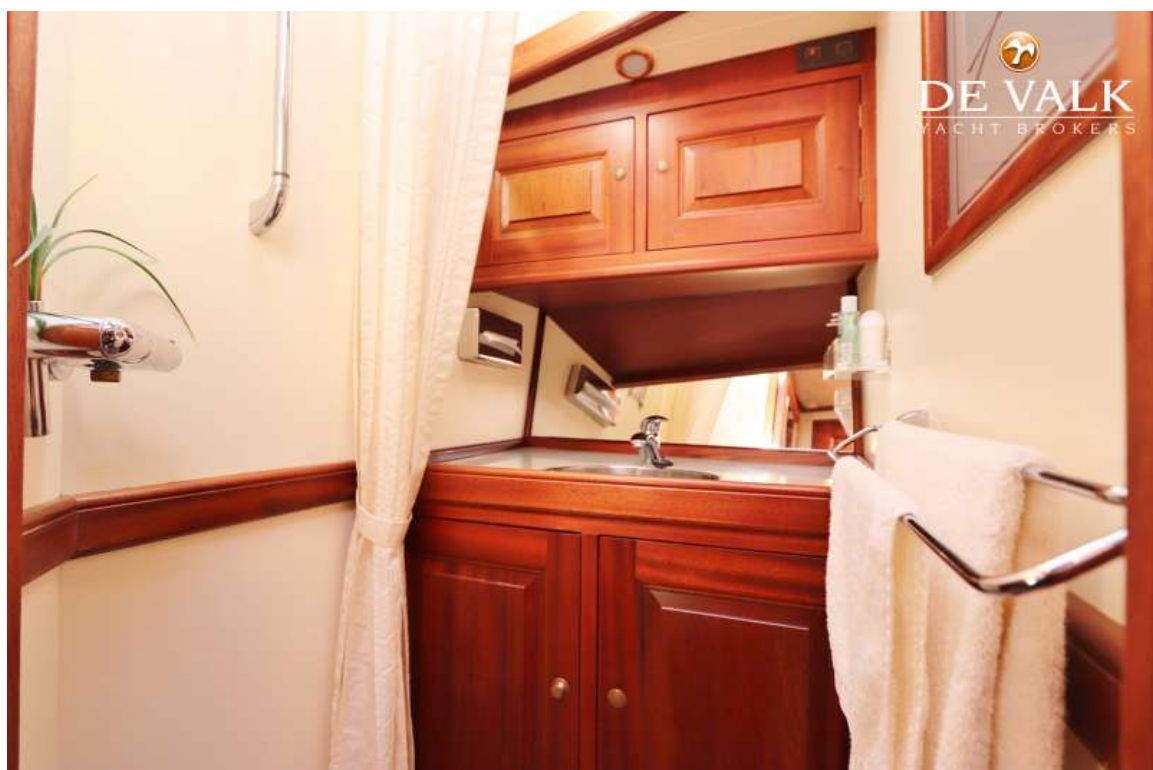


# PUFFIN 50

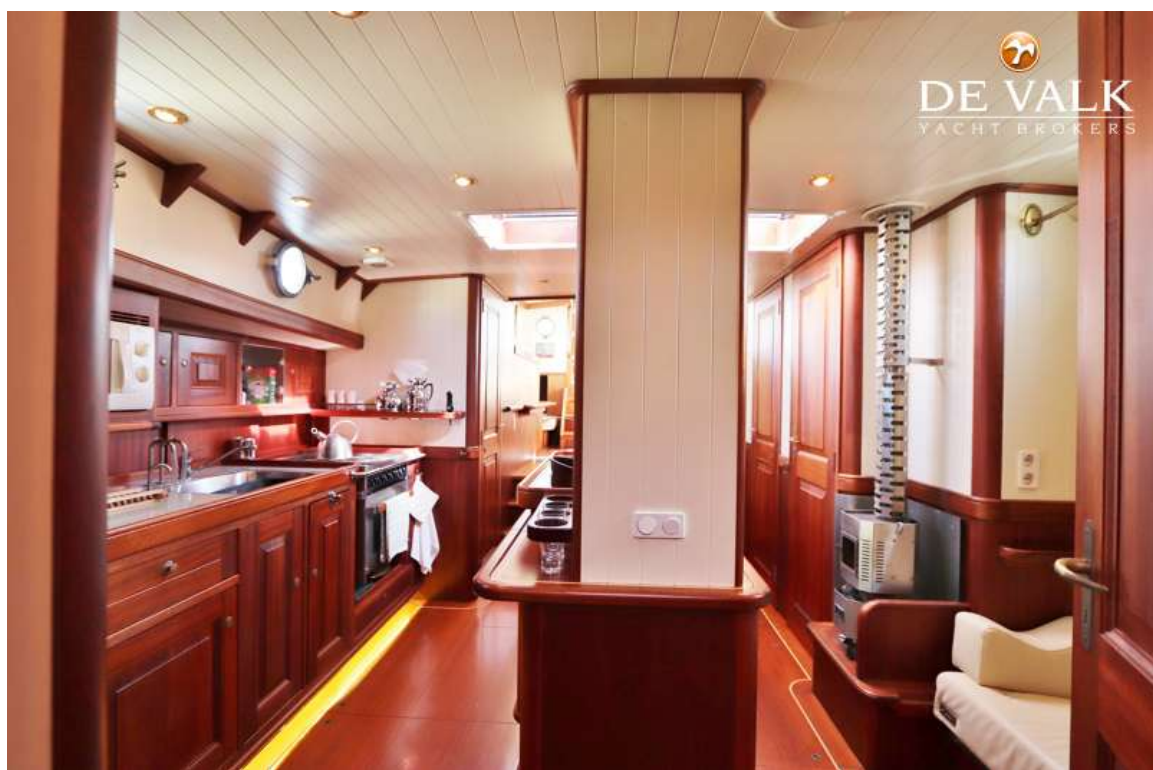




## PUFFIN 50



## PUFFIN 50

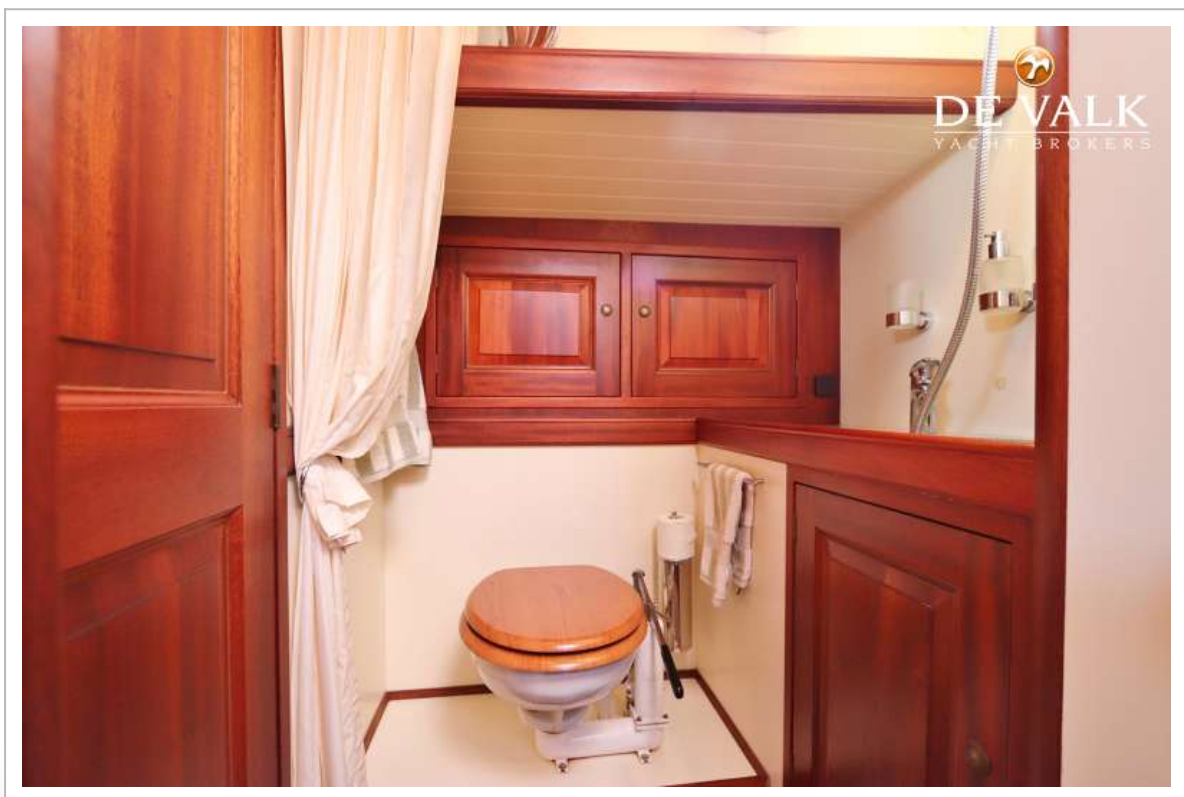




## PUFFIN 50



# PUFFIN 50



## PUFFIN 50

