



## NAJAD 331

## BROKER'S COMMENTS

This Najad 331 'Petrel' is an extremely attractive example of this classic yacht. A safe ocean-going yacht in the best Scandinavian style and quality. The Najad 331 is a compact cruiser with elegant accomodation that can fly. This Najad 331 is properly maintained throughout her life, has many upgrades an extras such as radar, AIS wireless transceiver, electric windlass and a electric winch. She's ready for a new adventure with her next owner!

*Tjerk Bouma*

## SPECIFICATIONS

<b>Dimensions</b>	9.98 x 3.26 x 1.70 (m)	<b>Builder</b>	Najadvarvet
<b>Built</b>	1998	<b>Cabins</b>	2
<b>Material</b>	GRP	<b>Berths</b>	6
<b>Engine(s)</b>	1 x Volvo Penta MD 2030(B) diesel	<b>Hp/Kw</b>	28.00 (hp), 20.58 (kw)
<b>Asking price</b>	sold (VAT )	<b>Lying</b>	contact Hindeloopen

## CONTACT

<b>Sales office</b>	De Valk Hindeloopen B.V.	<b>Telephone</b>	+31 514 52 40 00
<b>Address</b>	Oosterstrand 1 8713 JS Hindeloopen NL	<b>E-mail</b>	hindeloopen@devalk.nl

## DISCLAIMER

These particulars are given in good faith as supplied but cannot be guaranteed.



## GENERAL

Model	NAJAD 331
Type	sailing yacht
LOA (m)	9,98
Beam (m)	3,26
Draft (m)	1,70
Air draft (m)	15,20
Headroom (m)	2,00
Year built	1998
Builder	Najadvarvet
Country	Sweden
Designer	Erik Segerlind
Displacement (t)	5,3
CE norm	A
Hull material	GRP
Hull colour	white
Hull shape	round-bilged
Keel type	fin keel
Superstructure material	GRP
Rubbing strake	wood
Deck material	GRP
Deck finish	teak Needs attention.
Cockpit deck finish	teak Needs attention.
Antifouling (year)	2015 All stripped off and new antifouling applied.
Dorades	2x with stainless steel protection bars.
Window frame	aluminium 8x Lewmar
Window material	polycarbonate
Deckhatch	2x Lewmar
Fuel tank (litre)	stainless steel 90 L.
Fuel tank 2 (litre)	yes
Level indicator (fuel tank)	Wema



Freshwater tank (litre)	yes
Level indicator (freshwater)	Wema
Tiller	yes
More info on hull	Lime scale is removed, yellow glow is gone.
Extra info	Well equipped for shorthanded sailing.
Extra info	Yacht benefits from being dry-sailed for the past 3 years.
Extra info	03-2018 lower bearing rudder replaced

## ACCOMMODATION

Cabins	2
Berths	6
Interior	mahogany
Floor	teak and holly
Headroom saloon (m)	1,85
Heating	diesel ducted hot air Eberspracher 3DL heating both cabins and saloon
Chart table	yes
Galley	yes
Countertop	corian
Sink	stainless steel 2x
Cooker	calor gas Gimballed.
Oven	Gimballed.
Fridge	40 L.
Hot water system	220V + engine
Water pressure system	electrical
Owners cabin	v-bed
Bed length (m)	1.90 mtr
Wardrobe	hanging and shelves
Bathroom	shared
Toilet	shared
Toilet system	manual Jabsco



Wash basin	in the bathroom
Shower	shared
Guest cabin 1	double bed
Bed length (m)	1.90 mtr
Wardrobe	hanging
Bathroom	shared
Toilet	shared
Wash basin	in the bathroom
Shower	shared

## MACHINERY

No of engines	1
Make	Volvo Penta
Type	MD 2030(B)
HP	28,00
kW	20,58
Fuel	diesel
Year installed	1998
Maximum speed (kn)	8,0
Cruising speed (kn)	6,5
Consumption (l/hr)	2 ltr/hr
Engine cooling system	freshwater heat exchanger
Drive	sail-drive
Saildrive seal	Seal replacement in 2012
Engine controls	bowden cable
Propeller type	feathering
Propeller blades	2x
Manual bilge pump	2x
Electric bilge pump	yes
Bilge alarm	yes
Start battery	1x Numax 100 Ah maintenance free



Service battery	1x Numax maintenance free
Battery charger/inverter	Victron Pallas 12V 25 Ah
Shorepower	with cable
Extra info	Last engine service: September 2017
Extra info	Engine is well maintained and serviced annually.
Extra info	Gasdetector on board.

## NAVIGATION

Compass	Silva 1000
Depth sounder	Autohelm (doesn't work)
Depth sounder/log	Autohelm Speed
Windset	Autohelm Wind
Repeater	Autohelm Multi
VHF	Shipmate RS8310 with external speaker
Autopilot	Raytheon Autohelm ST4000+
Rudder angle indicator	On autopilot
Radar	yes
GPS	Autohelm GPS
Radar/plotter	Raymarine RL70C Pathfinder Plus
AIS receiver	Digital Yachts transceiver and WiLAN

## EQUIPMENT

Sprayhood	2014
Bathing platform	yes
Boarding ladder	stainless steel Folding
Anchor	Bruce
Anchor chain	40 m.
Windlass	electrical With foot operated switches
Dinghy	inflatable
Outboard	Mercury 2.5 hp
Sea railing	wire



Grab rail (superstructure)	teak
Life raft (pers)	container Solas Neptune 6 persons; out of service 2017.
Last life raft survey	06-2014
Lifebuoy	yes
Danbuoy	yes
Fenders	yes
Mooring lines	yes
Radio-cd player	Sony
Speakers in salon	yes
Extra info	Stainless steel mooring cleats, through bolted.
Extra info	Stainless steel spring cleats midships.

## RIGGING

Rigging	fractional with backstays Fractional rig 19/20.
Standing rigging	wire
Brand mast	Seldén
Material mast	aluminium
Spreaders	2x
Mainsail	2001 (used but good condition)
Mainsail cover	2014
Fully battened mainsail	yes
Genoa I	2008 (used but good condition)
Genoa II	2001 (slightly used)
Genoa furler	Furlex 200 S
Reefing System	slabreefing
Backstay adjuster	mechanical Nemo
Boomvang	mechanical and tackle Selden Rodkicker
Primary sheet winch	yes
Secondary sheet winch	2x Andersen 12ST single speed
Genoa sheetwinches	2x Andersen 40ST two speed



**Halyard winches**

1x Andersen 12ST single speed + 1x Andersen 28ST two speed (Electric) on coachroof.

**Reefing winch**

1x Andersen

**Spi-pole**

aluminium

**Extra info**

Lazyjacks included

**Extra info**

2.5 m. Genoa tracks with adjustable sheet blocks.





# NAJAD 331



# NAJAD 331



# NAJAD 331

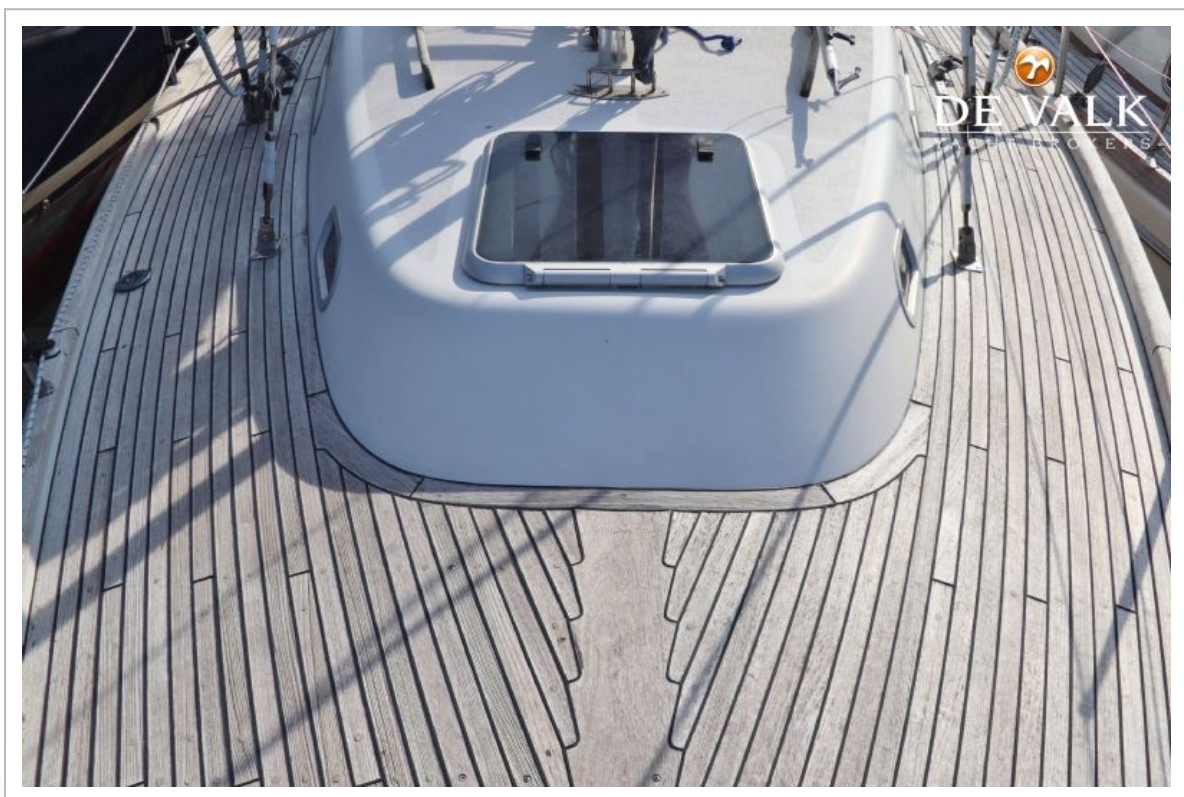




# NAJAD 331



# NAJAD 331

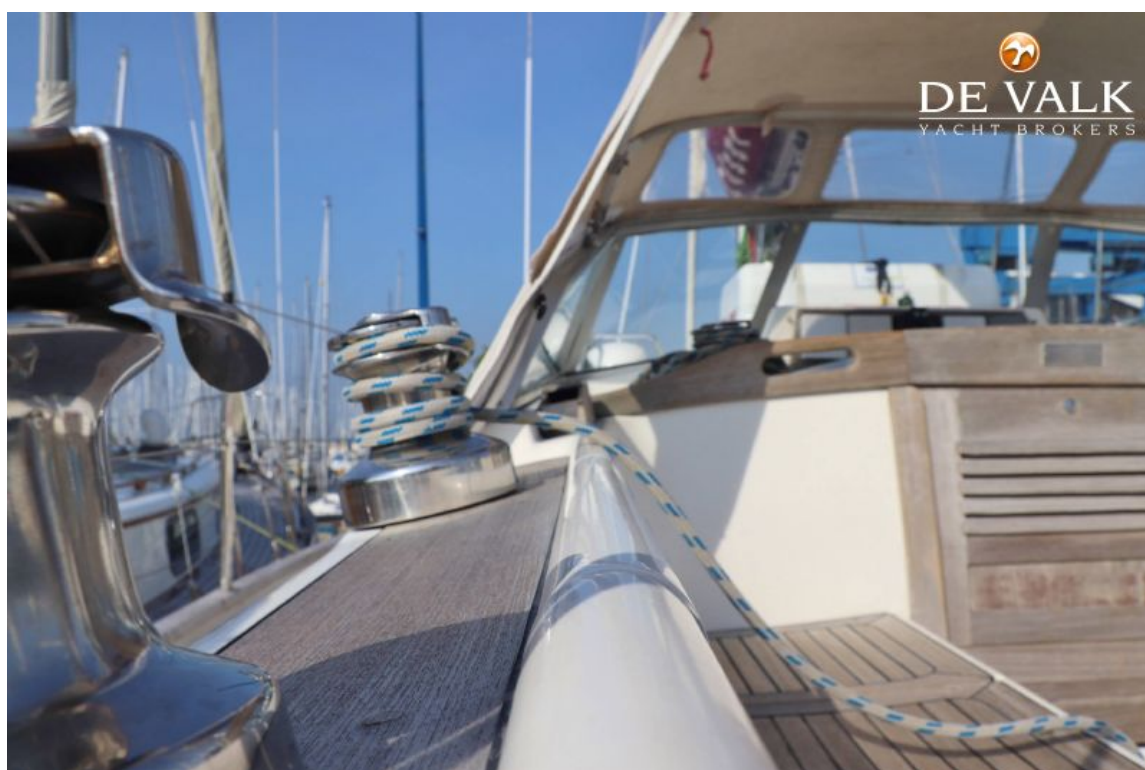




# NAJAD 331

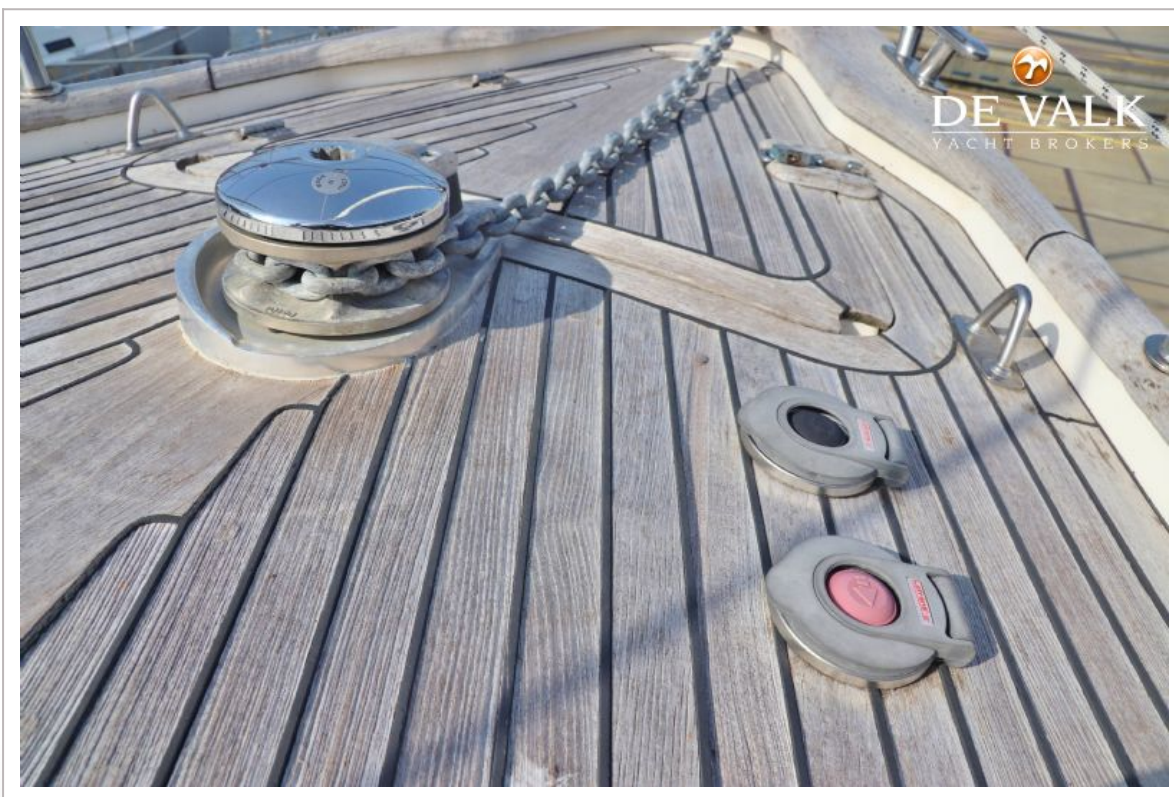


# NAJAD 331





# NAJAD 331





# NAJAD 331



# NAJAD 331





# NAJAD 331





# NAJAD 331

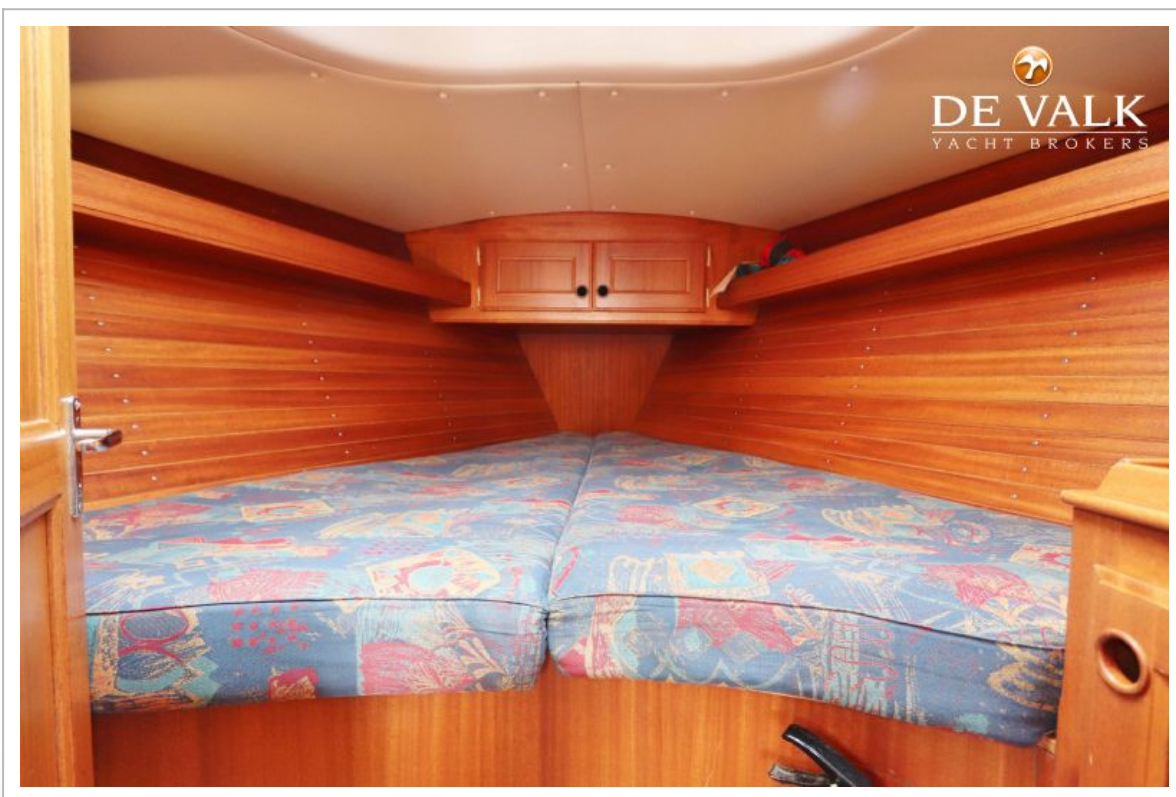




# NAJAD 331



# NAJAD 331

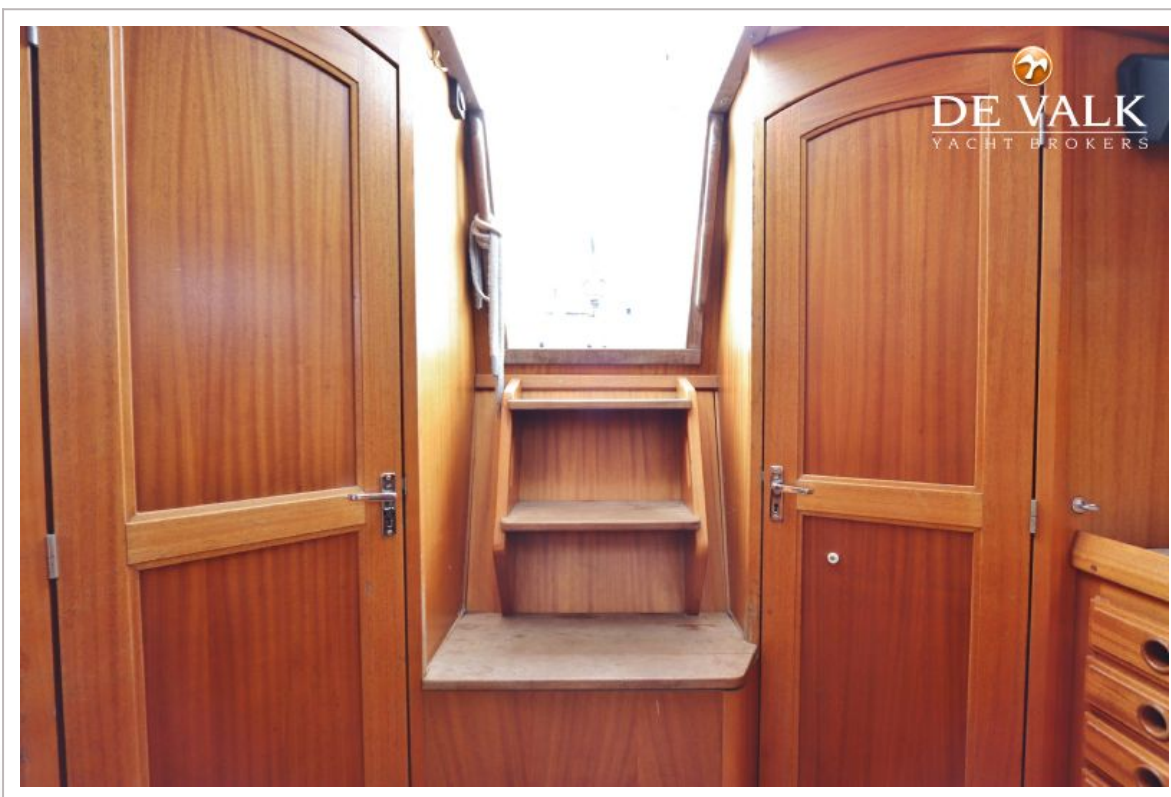




# NAJAD 331

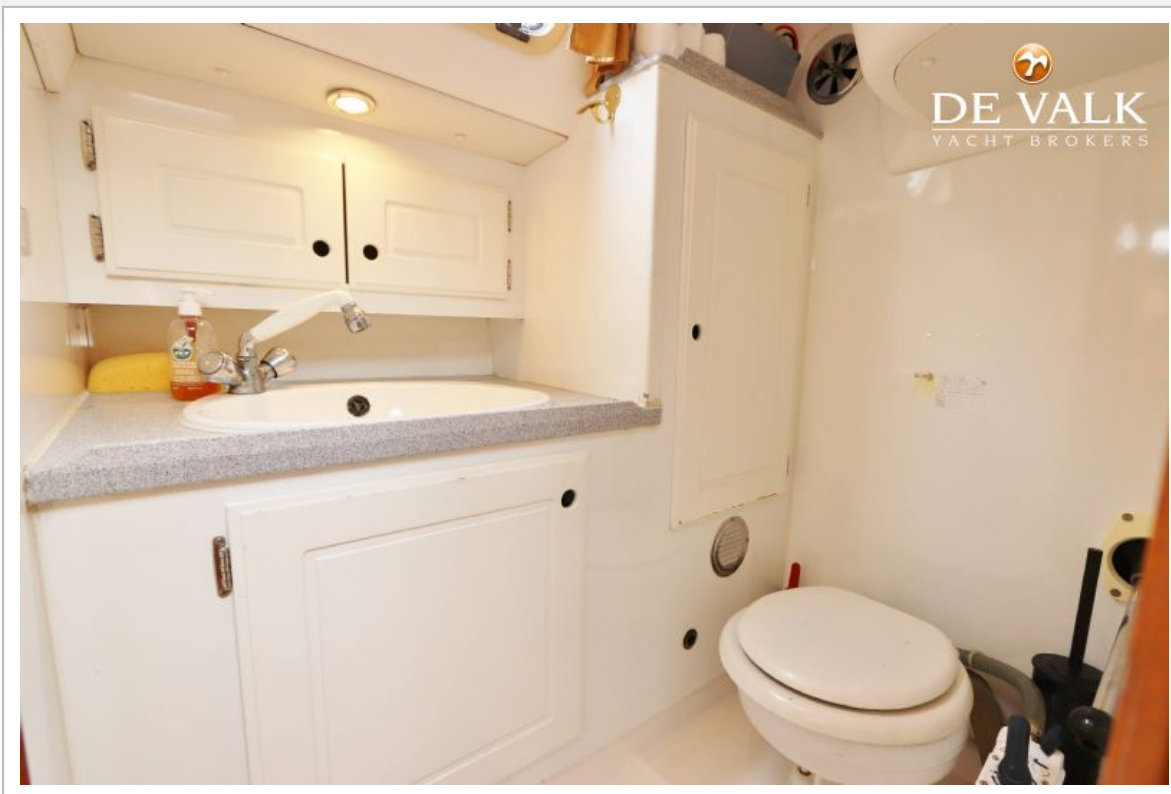


# NAJAD 331





# NAJAD 331



# NAJAD 331

