



DE VALK
YACHT BROKERS



SLOTTA 38 CCS



DE VALK
YACHT BROKERS

BROKERAGE | CHARTER | BERTHS | FINANCE | INSURANCE | YACHT MANAGEMENT

SLOTTA 38 CCS

BROKER'S COMMENTS

Slotta 38 CCS the "Haranka" is a fast, comfortable sailing yacht and equipped with all comforts. The yacht has a nice line and is good to handle. It is among other things equipped with a Mastervolt battery pack, a 12 "multifunctional display with Raymarine HD Radar and even a barbeque grill in the aft cockpit. With the spacious layout and the incidence of daylight you immediately feel at home on board. Extra advantage is the small depth of the keel, which gives you access to all outland and inland waters!

Henk Sijbranda

SPECIFICATIONS

Dimensions	11.75 x 3.75 x 2,65 / 1.35 (m)	Builder	Slotta Yachts
Built	1999	Cabins	2
Material	GRP	Berths	4
Engine(s)	1 x Volvo Penta MD22L diesel	Hp/Kw	50.00 (hp), 36.75 (kw)
Asking price	sold (VAT)	Lying	at sales office

CONTACT

Sales office	De Valk Hindeloopen B.V.	Telephone	+31 514 52 40 00
Address	Oosterstrand 1 8713 JS Hindeloopen NL	E-mail	hindeloopen@devalk.nl

DISCLAIMER

These particulars are given in good faith as supplied but cannot be guaranteed.



GENERAL

Model	SLOTTA 38 CCS
Type	sailing yacht
LOA (m)	11,75
LWL (m)	10,20
Beam (m)	3,75
Draft (m)	1,35
Draft min (m)	2,65
Headroom (m)	1,95
Year built	1999
Builder	Slotta Yachts
Country	Poland
Designer	Frank Neubelt
Displacement (t)	6,21
Ballast (tonnes)	lead 1,5
Hull material	GRP
Hull colour	white
Hull shape	round-bilged
Keel type	lifting keel Electric / hydraulic
Superstructure material	GRP
Rubbing strake	Teak
Deck material	GRP
Deck finish	teak
Superstructure deck finish	teak And GRP
Cockpit deck finish	yes
Antifouling (year)	2018 - AWLGrip Gold Label - dark blue
Window frame	aluminium And glued windows
Deckhatch	5x
Fuel tank (litre)	stainless steel 200
Level indicator (fuel tank)	yes
Freshwater tank (litre)	stainless steel 350 in 3 tanks



Level indicator (freshwater)	yes
Blackwater tank (litre)	stainless steel 50
Level indicator (blackwater)	yes
Blackwater tank extraction	pump
Wheel steering	Whitlock
Emergency tiller	yes

ACCOMMODATION

Cabins	2
Berths	4
Interior	mahogany
Floor	teak
Open cockpit	yes
Saloon	yes
Headroom saloon (m)	1,95
Heating	diesel ducted hot air Ardic
Chart table	yes
Aft Cabin	yes
Dinette to convert into berth	yes
Galley	yes
Sink	stainless steel Double
Cooker	2 burner
Oven	In cooker
Fridge	Coolmatic CB-40
Hot water system	yes
Water pressure system	yes
Crockery	yes
Owners cabin	double bed
Bed length (m)	2,05
Wardrobe	drawers and shelves
Bathroom	shared



Toilet	yes
Wash basin	yes
Shower	yes
Guest cabin 1	double bed
Bed length (m)	2
Wardrobe	drawers and shelves

MACHINERY

No of engines	1
Make	Volvo Penta
Type	MD22L
HP	50,00
kW	36,75
Fuel	diesel
Maximum speed (kn)	8
Cruising speed (kn)	7,1
Engine hours	4400
Engine cooling system	freshwater heat exchanger
Drive	sail-drive
Engine controls	bowden cable
Exhaust	watercooled
Propeller type	folding
Propeller blades	3
Manual bilge pump	yes
Electric bilge pump	yes
Electrical installation	12 / 220 V
Start battery	1x
Service battery	3x AGM
Battery monitor	yes
Shorepower	with cable



NAVIGATION

Compass	yes
Depth sounder	yes
Log	yes
Windset	yes
VHF	yes
VHF handheld	yes
Autopilot	yes
Radar/GPS/plotter	yes
Navtex	yes
Electronic chart(s)	yes
AIS receiver	yes
Navigation lights	yes

EQUIPMENT

Fixed windscreen	yes
Sprayhood with grab rail	yes
Cockpit cover	yes
Bimini	awning
Cockpit cushions	yes
Cockpit table	yes
Bathing platform	yes
Boarding ladder	stainless steel
Anchor	yes
Anchor chain	25 mtr.
Anchor 2	yes
Windlass	electrical
Sea railing	yes
Railing side opening gates	yes
Pushpit	yes
Pulpit	yes



Lifejackets	5x
Horn	yes
Radar reflector	yes
Fenders	yes
Mooring lines	yes
Spare parts	Volvo
Tools	yes
Radio-cd player	Kenwood
Clock - barometer	yes
Fire extinguisher	yes
Extra info	Barbeque / grill at the stern

RIGGING

Rigging	sloop-cutter
Standing rigging	wire
Brand mast	Seldén
Material mast	aluminium
Spreaders	2 pair
Mainsail	yes
Fully battened mainsail	yes
Furling boom	yes
Jib	16,6m ² - Beilken
Jib I	29,2m ² - Kloska Bremen - new
Genoa	38m ² - Beilken
Genoa furler	2x Furlex
Gennaker	90m ² - Bryt sails
Spinnaker	110m ² - Bryt sails
Removable innerforestay	yes
Reefing System	main in-boom furling
Backstay adjuster	yes
Boomvang	yes





SLOTTA 38 CCS



SLOTTA 38 CCS



SLOTTA 38 CCS



SLOTTA 38 CCS



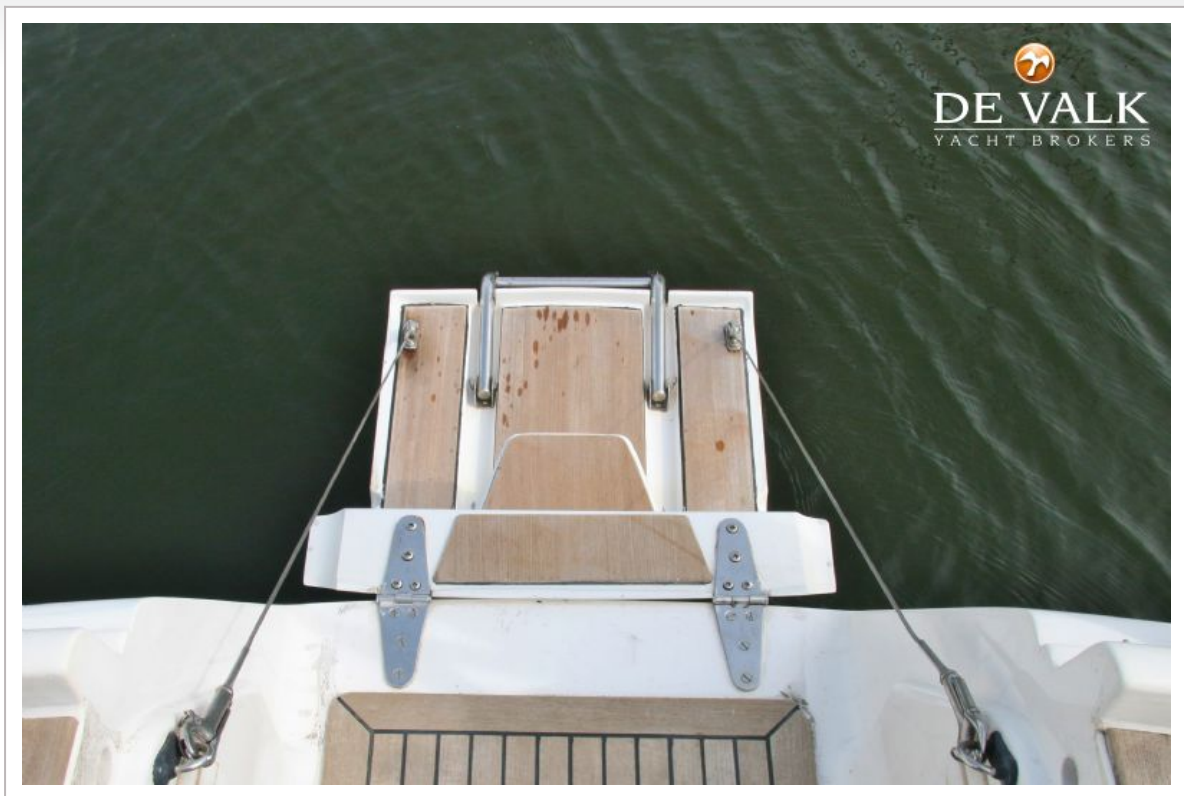
SLOTTA 38 CCS



SLOTTA 38 CCS



SLOTTA 38 CCS



SLOTTA 38 CCS



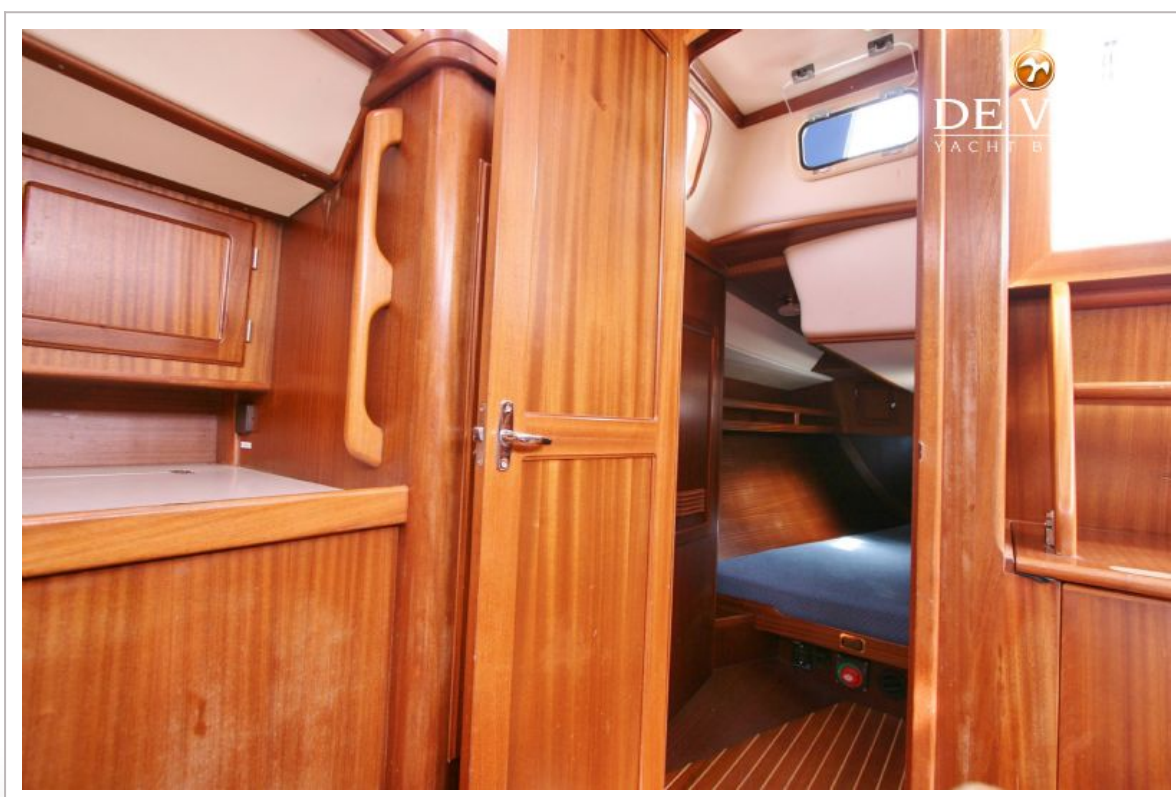
SLOTTA 38 CCS



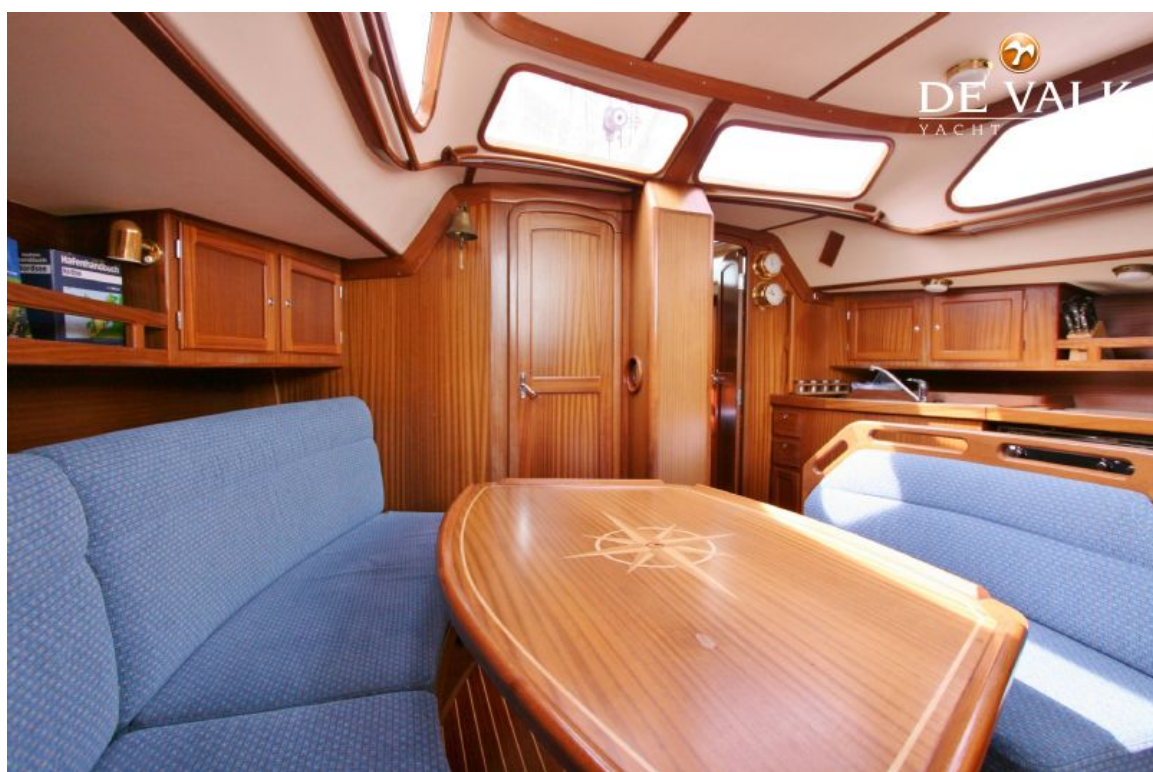
SLOTTA 38 CCS



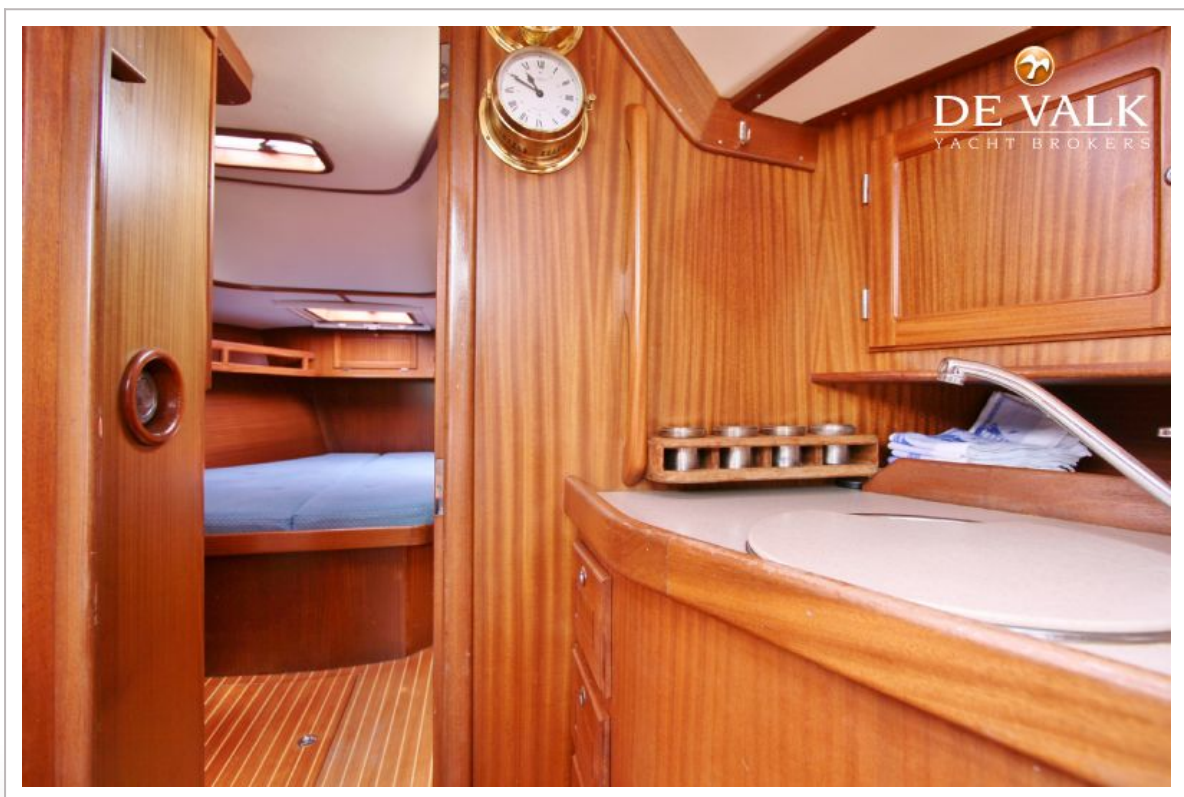
SLOTTA 38 CCS



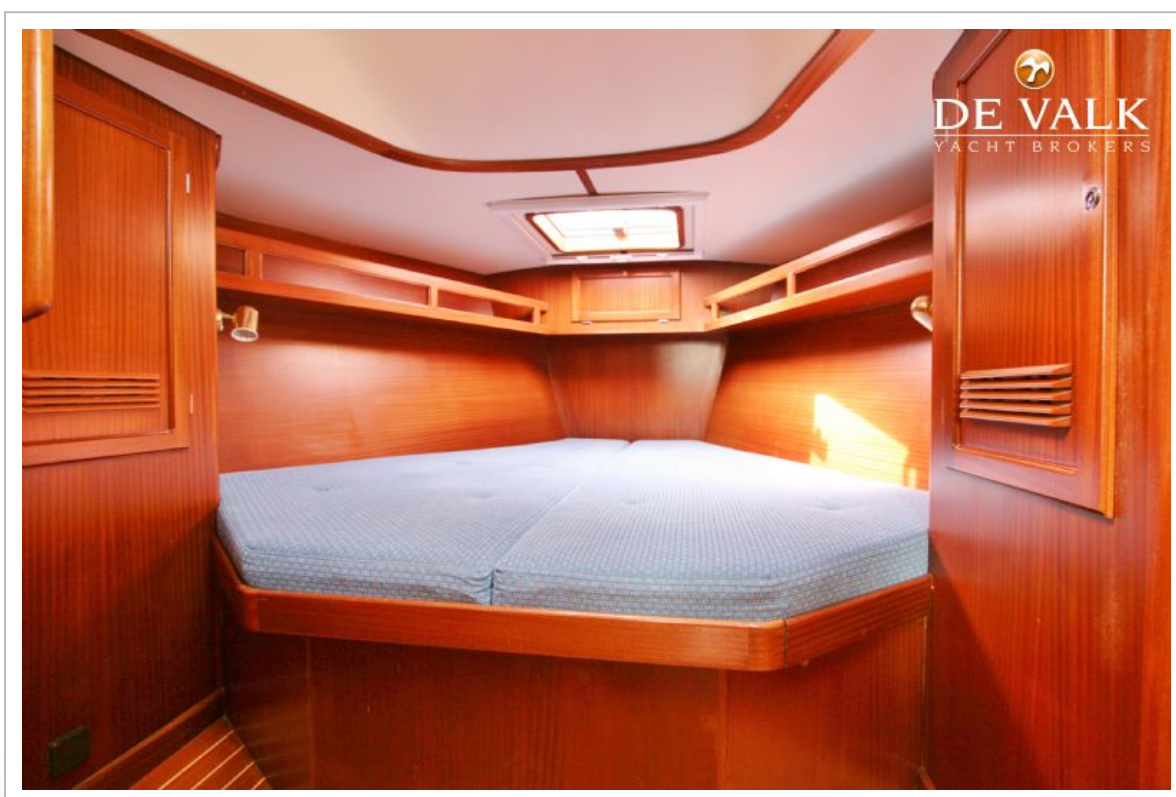
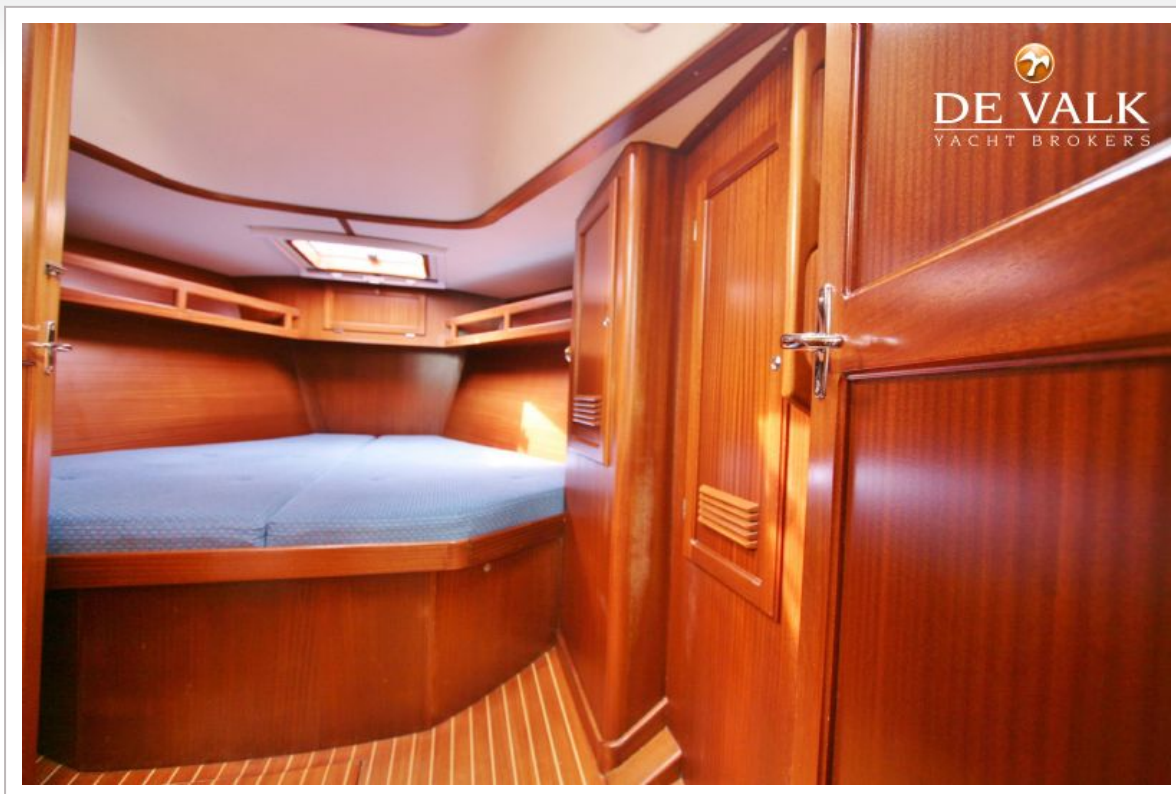
SLOTTA 38 CCS



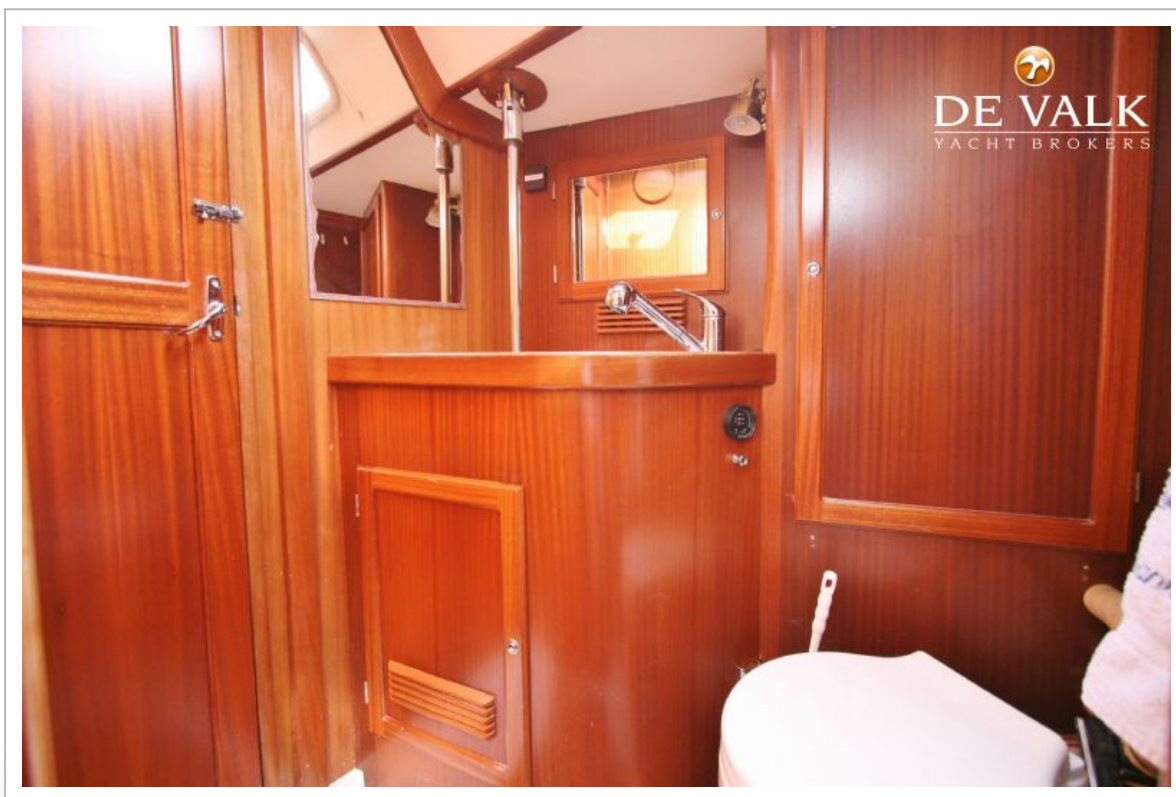
SLOTTA 38 CCS



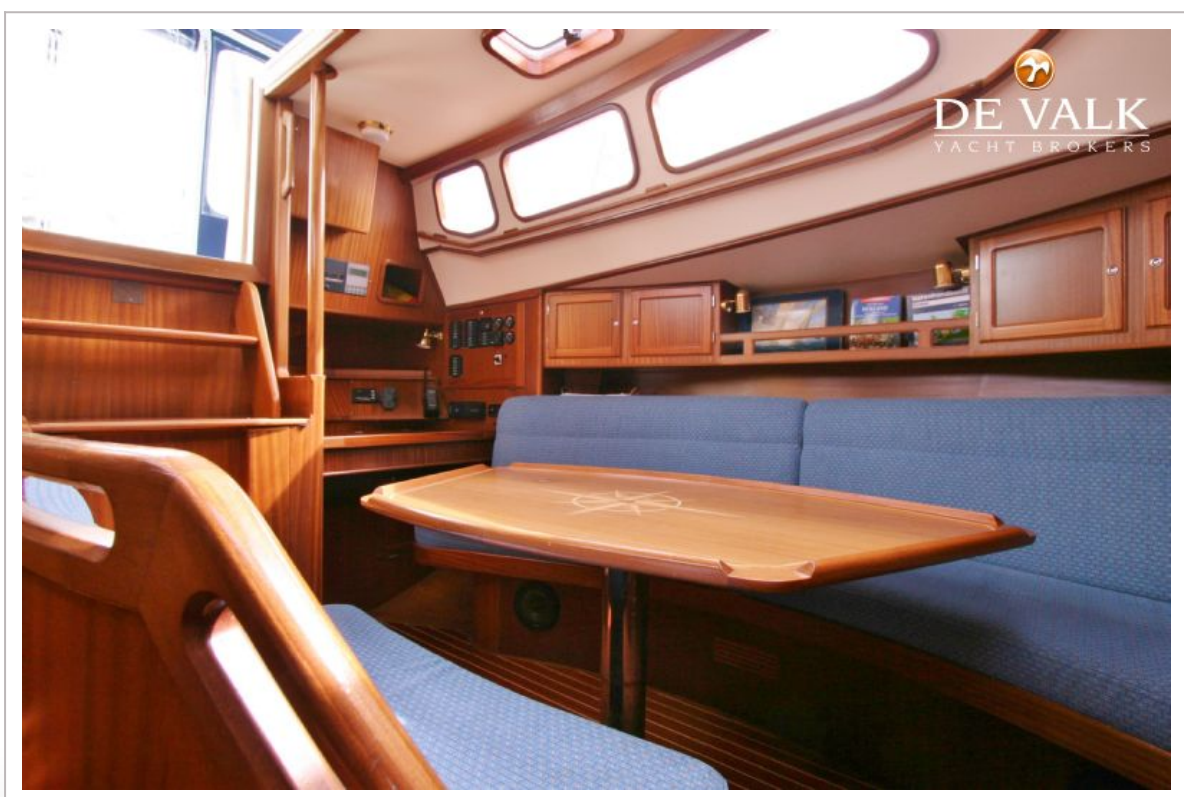
SLOTTA 38 CCS



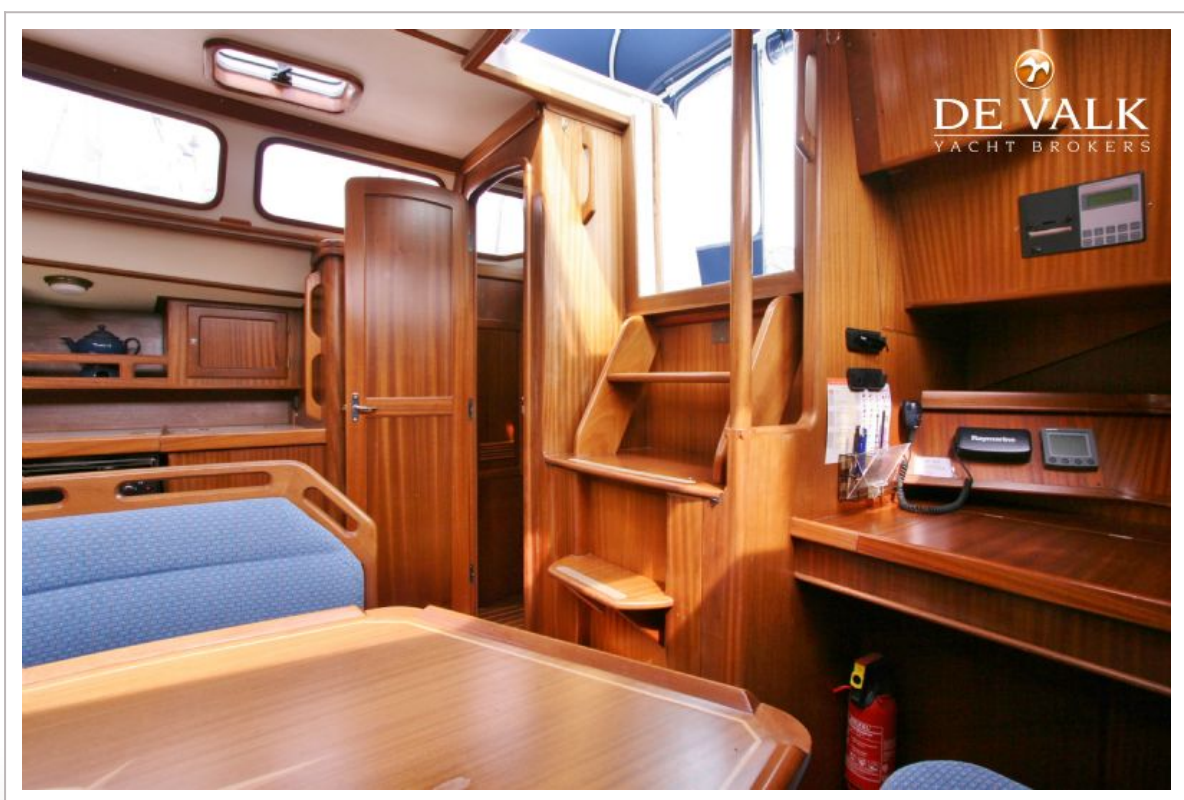
SLOTTA 38 CCS



SLOTTA 38 CCS



SLOTTA 38 CCS



SLOTTA 38 CCS



SLOTTA 38 CCS

