



DE VALK
YACHT BROKERS



FEELING 36DI



DE VALK
YACHT BROKERS

BROKERAGE | CHARTER | BERTHS | FINANCE | INSURANCE | YACHT MANAGEMENT

BROKER'S COMMENTS

This well maintained Feeling 36Di by its spacious layout and 3 cabins the perfect sail yacht for a family. By her various draft of min. 0.76 and max. 2.16 meters, this seaworthy yacht (cat. A) offers you a width sailing area where most yachts of this length do not come. Even fall dry on the seabed of the Waddensea is possible! The modern design with the width stern offers you a lot of space and comfort in the cockpit. The interior is spacious and light due to the modern materials they have been used. In summary; a well maintained, versatile modern sail yacht for many purposes!

Tjerk Bouma

SPECIFICATIONS

| | | | |
|---------------------|-----------------------------------|----------------|------------------------|
| Dimensions | 11.13 x 3.62 x 0,76 / 2.16 (m) | Builder | Kirie Group |
| Built | 2004 | Cabins | 3 |
| Material | GRP | Berths | 8 |
| Engine(s) | 1 x Volvo Penta 3 cilinder diesel | Hp/Kw | 40.00 (hp), 29.40 (kw) |
| Asking price | sold (VAT) | Lying | at sales office |

CONTACT

| | | | |
|---------------------|---|------------------|-----------------------|
| Sales office | De Valk Hindeloopen B.V. | Telephone | +31 514 52 40 00 |
| Address | Oosterstrand 1 8713 JS Hindeloopen NL | E-mail | hindeloopen@devalk.nl |

DISCLAIMER

These particulars are given in good faith as supplied but cannot be guaranteed.



GENERAL

| | |
|----------------------------|-------------------------------|
| Model | FEELING 36DI |
| Type | sailing yacht |
| LOA (m) | 11,13 |
| LWL (m) | 9,91 |
| Beam (m) | 3,62 |
| Draft (m) | 2,16 |
| Draft min (m) | 0,76 |
| Air draft (m) | 16,80 |
| Headroom (m) | 1,95 |
| Year built | 2004 |
| Builder | Kirie Group |
| Country | France |
| Designer | Michel Joubert/Patrick Roseo |
| Displacement (t) | 6,2 |
| Ballast (tonnes) | cast iron |
| CE norm | A |
| Hull material | GRP |
| Hull colour | off-white |
| Hull shape | round-bilged |
| Keel type | centreboard |
| Superstructure material | GRP |
| Superstructure (mm) | yes |
| Rubbing strake | aluminum |
| Deck material | GRP |
| Deck finish | teak |
| Superstructure deck finish | non-skid moulded in |
| Cockpit deck finish | non-skid moulded in Anti-slip |
| Antifouling (year) | 2018 |
| Window frame | aluminium |
| Window material | perspex |



| | |
|-----------------------------|----------------------------------|
| Fuel tank (litre) | stainless steel 250 L. |
| Level indicator (fuel tank) | yes |
| Freshwater tank (litre) | stainless steel 2x, total 350 L. |
| Wheel steering | mechanical |
| Emergency tiller | yes |

ACCOMMODATION

| | |
|-------------------------|------------------------------------|
| Cabins | 3 |
| Berths | 8 |
| Interior | cherry New upholstery sofas 2012 |
| Floor | woodprint |
| Open cockpit | yes |
| Chart table | yes |
| Galley | yes |
| Countertop | plastic |
| Sink | stainless steel |
| Cooker | calor gas |
| Oven | yes |
| Fridge | yes |
| Hot water system | 220V + engine |
| Water pressure system | electrical Electrical + manual |
| Manual and/or foot pump | yes |
| Owners cabin | v-bed |
| Wardrobe | hanging and shelves |
| Bathroom | shared |
| Toilet | shared |
| Toilet system | manual |
| Wash basin | at the toilet At toilet + bathroom |
| Shower | shared |
| Guest cabin 1 | double bed |
| Bed length (m) | 2,20 m |



| | |
|----------------|---------------------|
| Wardrobe | hanging and shelves |
| Guest cabin 2 | double bed |
| Bed length (m) | 2,20m |
| Wardrobe | hanging and shelves |

MACHINERY

| | |
|--------------------------|---------------------------|
| No of engines | 1 |
| Make | Volvo Penta |
| Type | 3 cilinder |
| HP | 40,00 |
| kW | 29,40 |
| Fuel | diesel |
| Year installed | 2004 |
| Maximum speed (kn) | 7 |
| Cruising speed (kn) | 5 |
| Consumption (l/hr) | 4 |
| Range (nm) | 300 |
| Engine cooling system | freshwater heat exchanger |
| Drive | shaft |
| Engine controls | bowden cable |
| Gearbox | mechanical |
| Exhaust | watercooled |
| Propeller type | fixed |
| Propeller blades | 3 |
| Propeller shaft material | stainless steel |
| Shaft lubrication | water |
| Manual bilge pump | yes |
| Electric bilge pump | yes |
| Batteries | 3 |
| Start battery | 1 |
| Service battery | 2 |



| | |
|-----------------|------------|
| Battery charger | yes |
| Shorepower | with cable |

NAVIGATION

| | |
|----------------|------------|
| Compass | yes |
| Depth sounder | yes |
| Log | yes |
| Windset | yes |
| VHF | yes |
| Autopilot | yes |
| Radar | No display |
| GPS | yes |
| Radio receiver | yes |

EQUIPMENT

| | |
|----------------------------|---------------------------------------|
| Sprayhood | yes |
| Sprayhood with grab rail | yes |
| Cockpit table | yes |
| Bathing platform | yes |
| Boarding ladder | stainless steel |
| Deck shower | yes |
| Anchor | yes |
| Anchor chain | yes |
| Anchor 2 | yes |
| Windlass | electrical |
| Sea railing | stainless steel |
| Grab rail (superstructure) | stainless steel |
| Life raft (pers) | valise (or bag) Arimar 8 pers. (2004) |
| Last life raft survey | 03-2016 |
| Lifejackets | yes |
| Lifebuoy | yes |



| | |
|-----------------|-----|
| Radar reflector | yes |
| Fenders | yes |
| Mooring lines | yes |
| Radio-cd player | yes |

RIGGING

| | |
|-------------------------|------------|
| Rigging | fractional |
| Brand mast | Seldén |
| Material mast | aluminium |
| Fully battened mainsail | yes |
| Genoa | 2012 |
| Genoa furler | yes |
| Gennaker | yes |
| Stormjib | yes |
| Backstay adjuster | mechanical |
| Boomvang | gasspring |
| Primary sheet winch | yes |
| Genoa sheetwinches | yes |



FEELING 36DI



FEELING 36DI



FEELING 36DI



FEELING 36DI





FEELING 36DI



FEELING 36DI



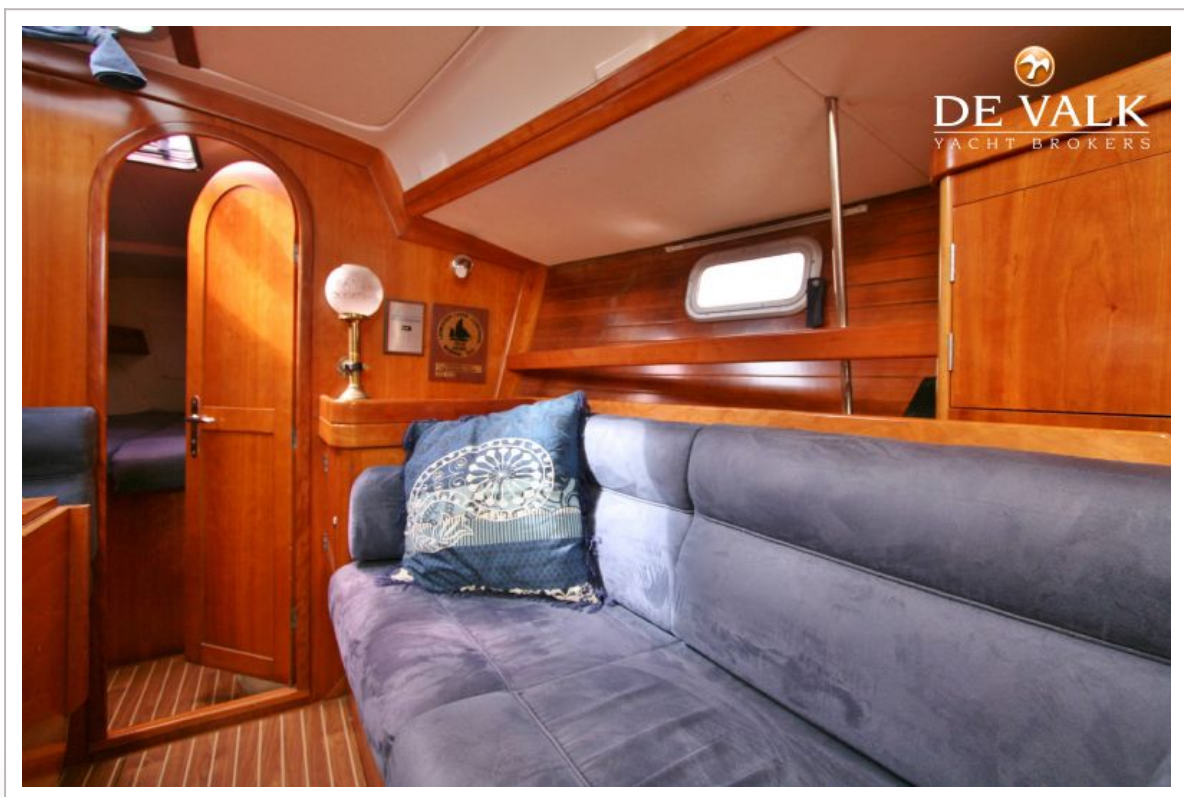
FEELING 36DI



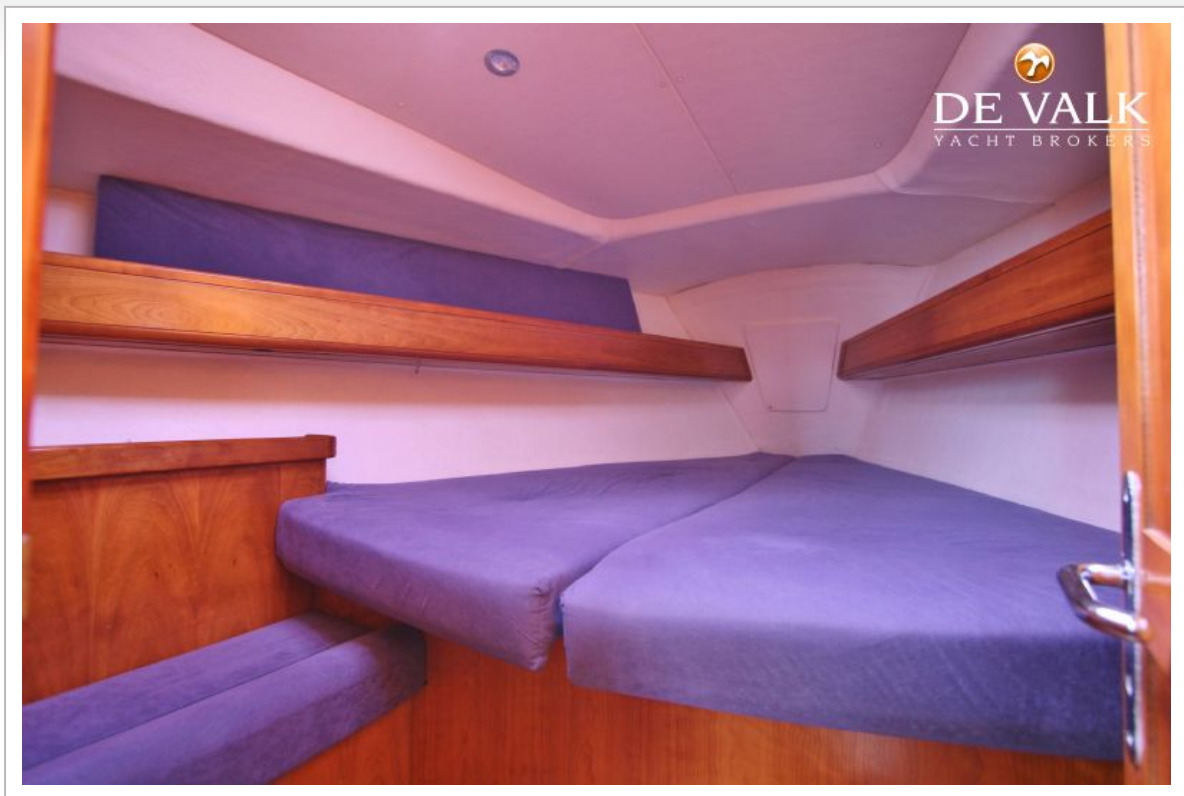
FEELING 36DI



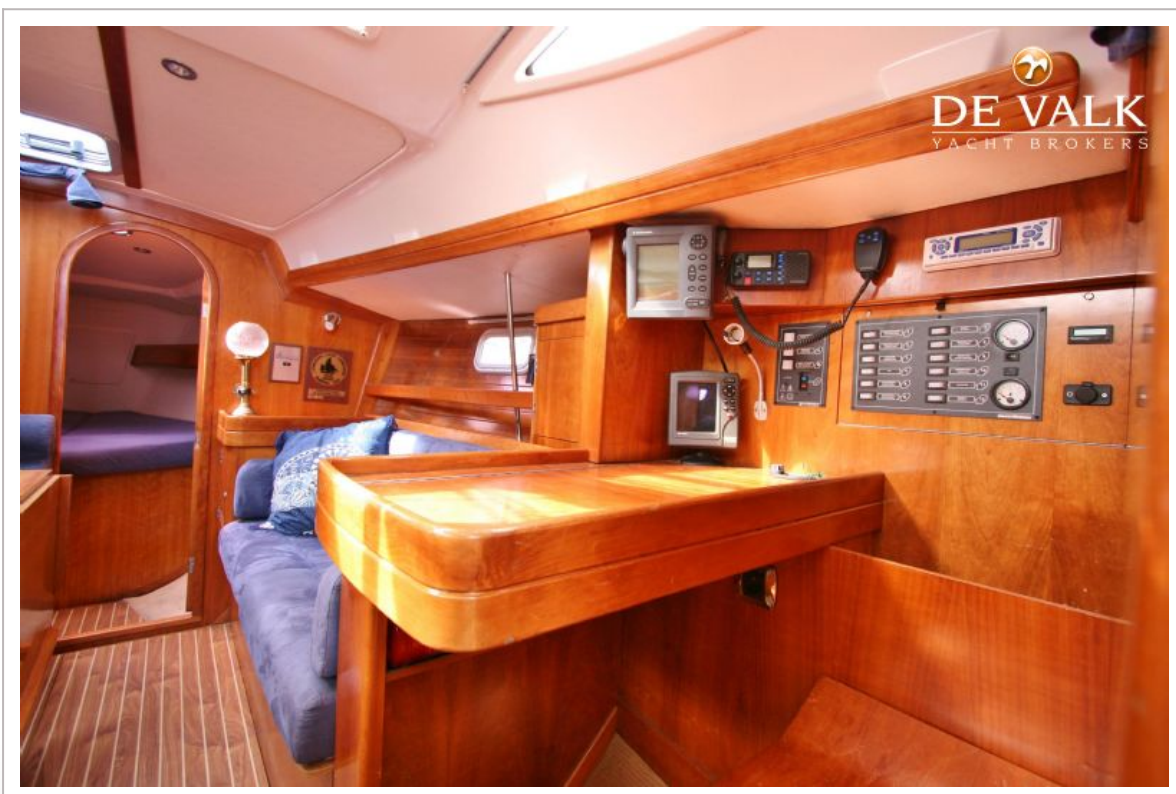
FEELING 36DI



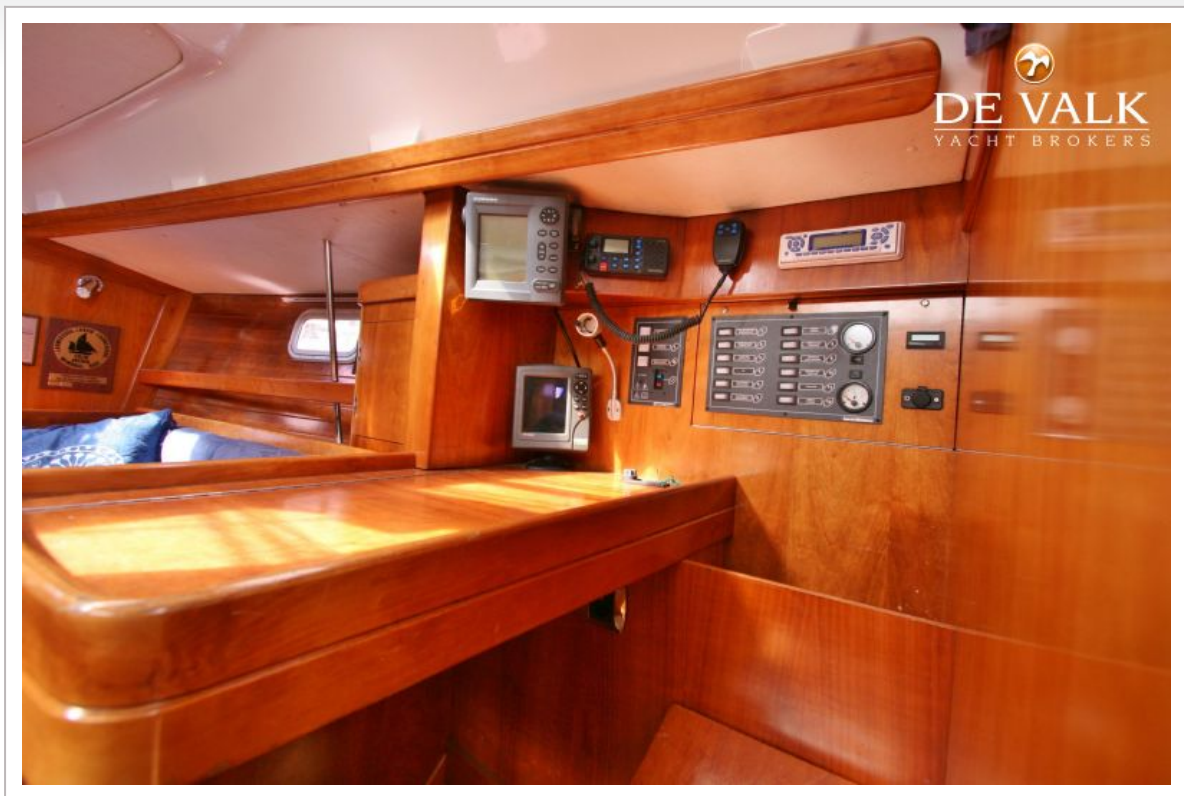
FEELING 36DI



FEELING 36DI



FEELING 36DI



FEELING 36DI



FEELING 36DI

