



DE VALK
YACHT BROKERS



PIETER BEELDSNIJDER 49 KETCH



DE VALK
YACHT BROKERS

PIETER BEELDSNIJDER 49 KETCH

BROKER'S COMMENTS

This Pieter Beeldsnijder is a true seagoing sailing yacht built by a wharf which earned her recognition for a long period of time already. Spacious on deck and spacious inside; with a large saloon and enormous after cabin as bedroom. The basics are well maintained, a perfect yacht to give your touch to it. She has an ideal layout for long distance cruising. The large deckhouse is a secure and comfortable station and with her strong construction you can cruise with peace of mind. With her ketch-cutter rig she is not overpowered and thus easy to handle for a small crew.

Tjerk Bouma

SPECIFICATIONS

Dimensions	15.70 x 4.44 x 1.90 (m)	Builder	Bloemsma Makkum
Built	1987	Cabins	3
Material	Aluminium	Berths	6
Engine(s)	1 x Ford 2715E diesel	Hp/Kw	120.00 (hp), 88.20 (kw)
Asking price	sold (VAT)	Lying	contact Hindeloopen

CONTACT

Sales office	De Valk Hindeloopen	Telephone	+31 514 52 40 00
Address	Oosterstrand 1 8713 JS Hindeloopen The Netherlands	E-mail	hindeloopen@devalk.nl

DISCLAIMER

These particulars are given in good faith as supplied but cannot be guaranteed.



PIETER BEELDSNIJDER 49 KETCH

GENERAL

Model	PIETER BEELDSNIJDER 49 KETCH
Type	sailing yacht
LOA (m)	15,70
LWL (m)	12,40
Beam (m)	4,44
Draft (m)	1,90
Headroom (m)	2,05
Year built	1987
Builder	Bloemsma Makkum
Country	The Netherlands
Designer	Pieter Beeldsnijder Yacht Design
Displacement (t)	18,0
Ballast (tonnes)	7,5
Hull material	aluminium
Hull colour	white
Hull shape	full bilged
Keel type	long keel
Superstructure material	aluminium
Rubbing strake	aluminum
Deck material	aluminium
Deck finish	non-skid paint
Superstructure deck finish	paint
Cockpit deck finish	non-skid paint
Dorades	2x
Window frame	aluminium
Window material	tempered glass
Deckhatch	6x Lewmar
Insulation	foam plates
Fuel tank (litre)	aluminium 2x Total 1.700 L.
Level indicator (fuel tank)	Meter and inspection glass



PIETER BEELDSNIJDER 49 KETCH

Fuel daytank (litre)	50 L.
Freshwater tank (litre)	aluminium 1.100 L.
Greywater tank (litre)	aluminium 250 L.
Wheel steering	hydraulic
Inside helm position	yes
Outside helm position	hydraulic
Emergency tiller	yes
More info on hull	Ribs every 400 mm
Extra info	Blueprints and all yacht info available.

ACCOMMODATION

Cabins	3
Berths	6
Interior	teak Massive
Floor	carpet
Aft deck	yes
Pilot house/deck saloon	yes
Headroom saloon (m)	1,95
Heating	central hot water On diesel by engine
Chart table	yes
Aft Cabin	yes
Galley	yes
Countertop	plastic
Sink	stainless steel 2x
Cooker	calor gas Plastimo Pacific 2000
Oven	Plastimo Pacific 2000
Fridge	Frigomatic
Hot water system	geyser on Calor Gas
Water pressure system	electrical
Owners cabin	double bed Auping
Bed length (m)	2,00 x 1,60



PIETER BEELDSNIJDER 49 KETCH

Wardrobe	hanging and shelves
Bathroom	en suite
Toilet	en suite
Toilet system	manual
Wash basin	in the bathroom
Shower	en suite
Guest cabin 1	bunk bed
Bed length (m)	1x 2,00 x 0,55 and 1x 2,00 x 0,60
Wardrobe	hanging and drawers
Bathroom	shared
Toilet	shared
Shower	shared
Guest cabin 2	v-bed Front cabin
Bed length (m)	1,80
Wardrobe	hanging and shelves
Bathroom	shared
Toilet	en suite
Toilet system	chemical
Shower	shared

MACHINERY

No of engines	1
Make	Ford
Type	2715E
HP	120,00
kW	88,20
Fuel	diesel
Year installed	1987
Year of overhaul	Engine and gearbox, after this just a few hours used. 2004
Engine cooling system	freshwater heat exchanger
Drive	shaft



Engine controls	bowden cable
Gearbox	Hurth 4503R
Bowthruster	electric 2004 Maxpower 24V 165 serie Composit
Exhaust	watercooled
Propeller type	fixed
Propeller blades	3
Propeller shaft material	stainless steel
Shaft lubrication	water
Electric bilge pump	Mechanical switch
Start battery	(2017) 2x 24V 70 Ah
Service battery	(2017) 4x 140 Ah
Bowthruster battery	By service battery
Battery charger	Victron Scila 24V 50 Ah
Inverter	Mastervolt Nascine 24V 1.500 Ah
Shorepower	with cable

NAVIGATION

Compass	Inside and outside 2x
Depth sounder/log	Navman
Windset	Navman
Repeater	1x
VHF handheld	yes
Autopilot	Simrad
Radar	Furuno
Navigation lights	yes
Searchlight	yes

EQUIPMENT

Fixed windscreen	10x
Sun awning	yes
Boarding ladder	stainless steel



PIETER BEELDSNIJDER 49 KETCH

Anchor	CQR Plough 2x
Anchor chain	yes
Windlass	electrical (2018) Engine renewed
Davits	aluminum
Davits controls	manual
Sea railing	wire Stainless steel
Grab rail (superstructure)	aluminium
Railing side opening gates	2x
Pushpit	2x
Horn	electric
Fenders	yes
Mooring lines	yes
Spare parts	yes

RIGGING

Rigging	ketch-cutter
Standing rigging	wire
Brand mast	Rondal
Material mast	aluminium
Spreaders	2x
Mainsail	yes
Mainsail cover	yes
Cutterstay	yes
Mizzen	yes
Mizzen sailcover	yes
Jib	yes
Genoa	120%
Genoa furler	yes
Reefing System	slabreefing
Primary sheet winch	2x Lewmar 40
Genoa sheetwinches	2x Barient 28 selftailing



Halyard winches

2x Lewmar 40

Spi-pole

aluminium 2x Rondal

Isolated backstay

yes



PIETER BEELDSNIJDER 49 KETCH



PIETER BEELDSNIJDER 49 KETCH



PIETER BEELDSNIJDER 49 KETCH



PIETER BEELDSNIJDER 49 KETCH



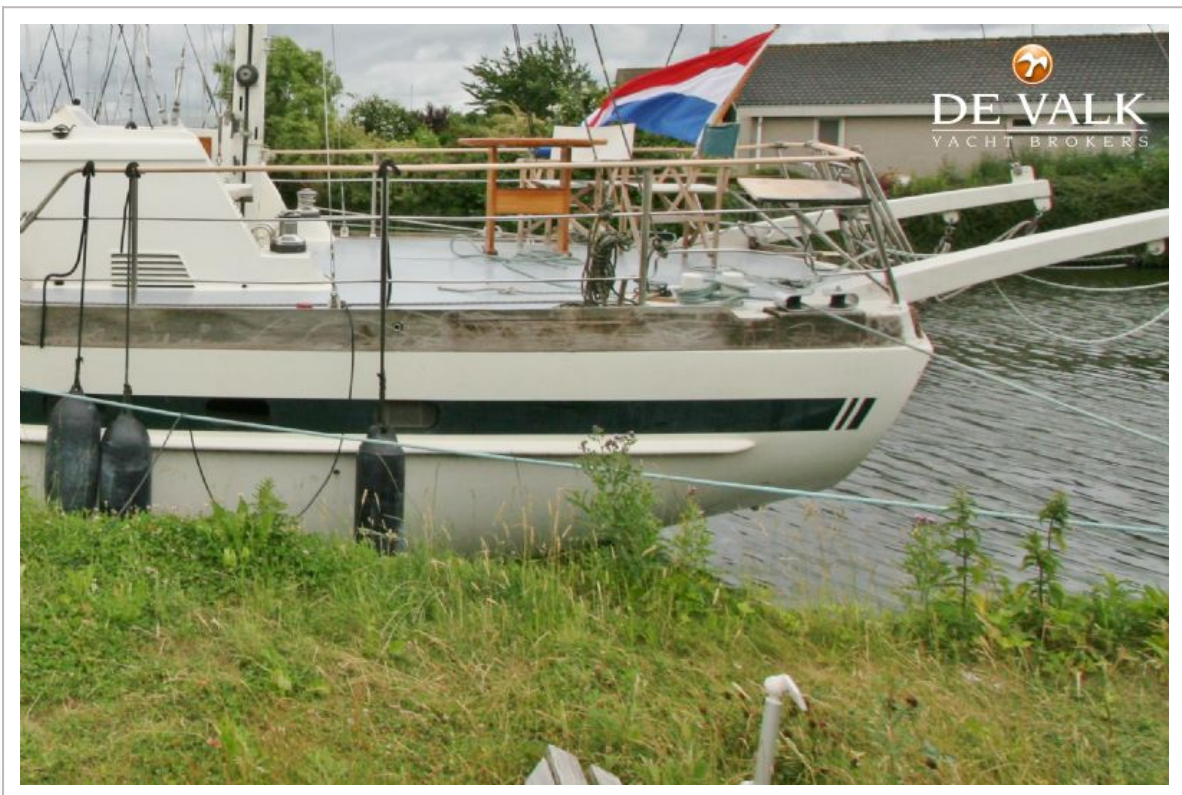
PIETER BEELDSNIJDER 49 KETCH



PIETER BEELDSNIJDER 49 KETCH



PIETER BEELDSNIJDER 49 KETCH



PIETER BEELDSNIJDER 49 KETCH



PIETER BEELDSNIJDER 49 KETCH



PIETER BEELDSNIJDER 49 KETCH



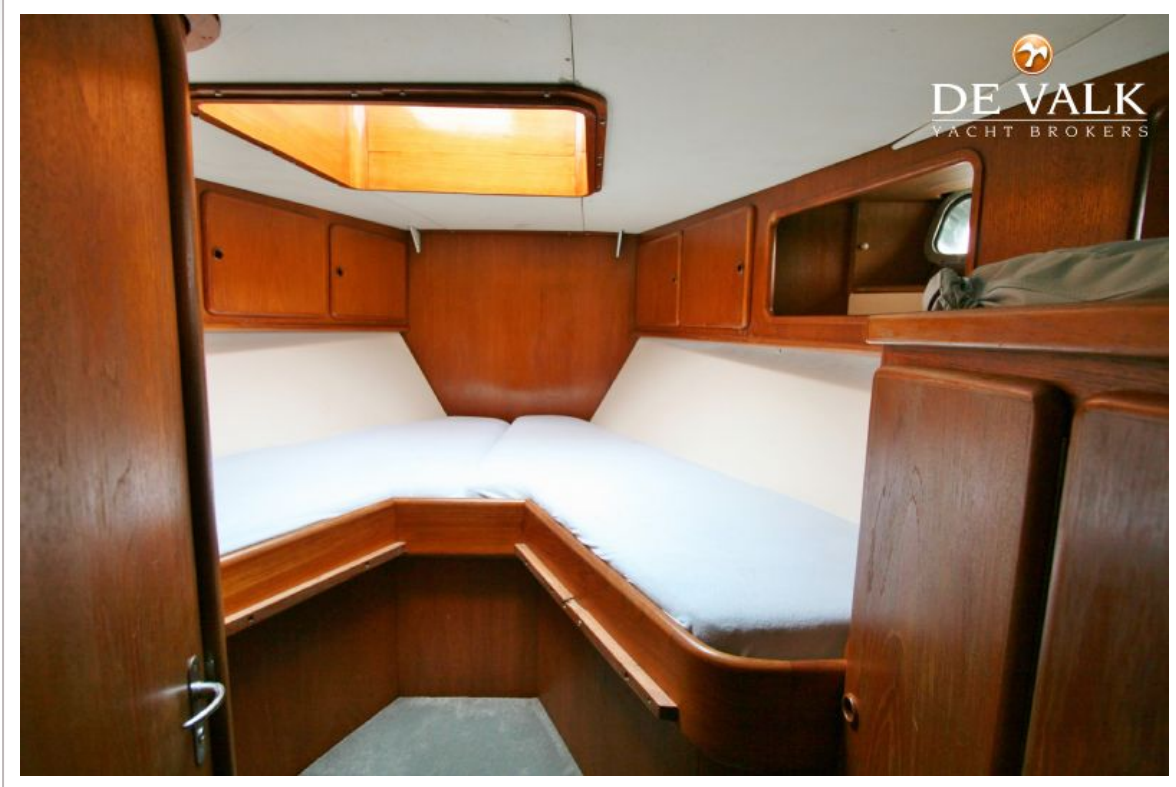
PIETER BEELDSNIJDER 49 KETCH



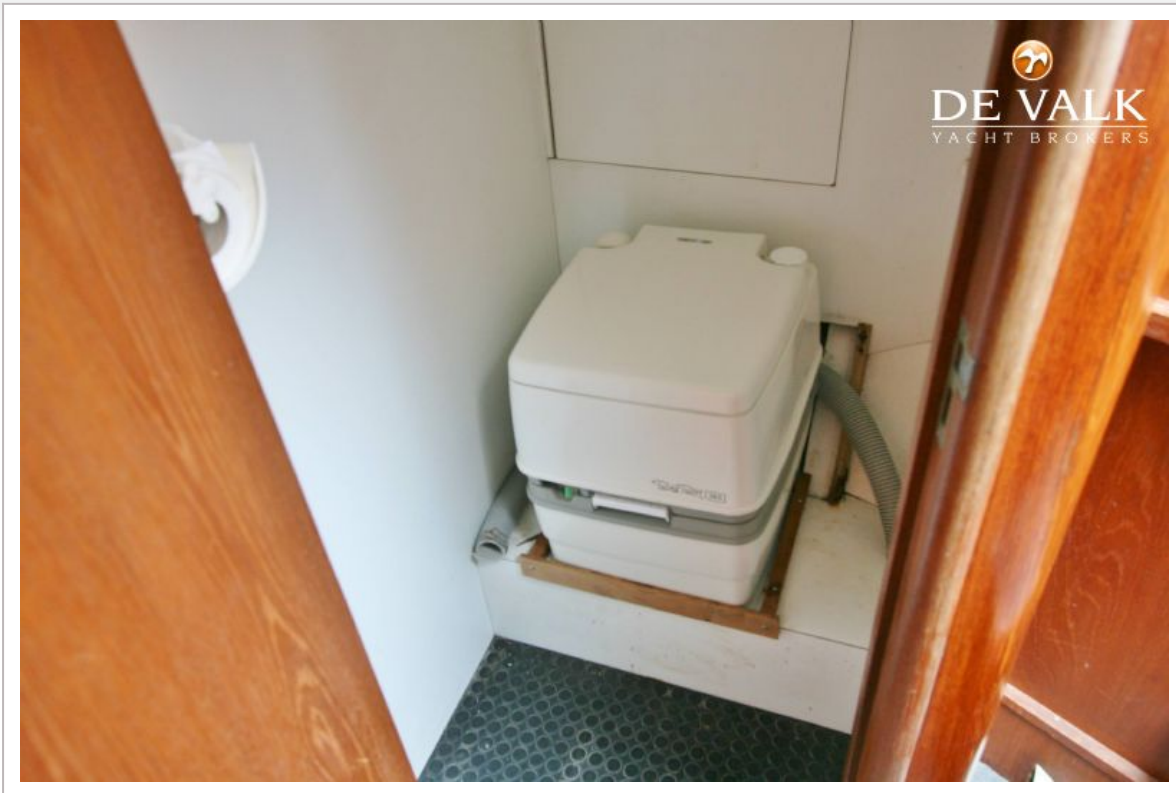
PIETER BEELDSNIJDER 49 KETCH



PIETER BEELDSNIJDER 49 KETCH



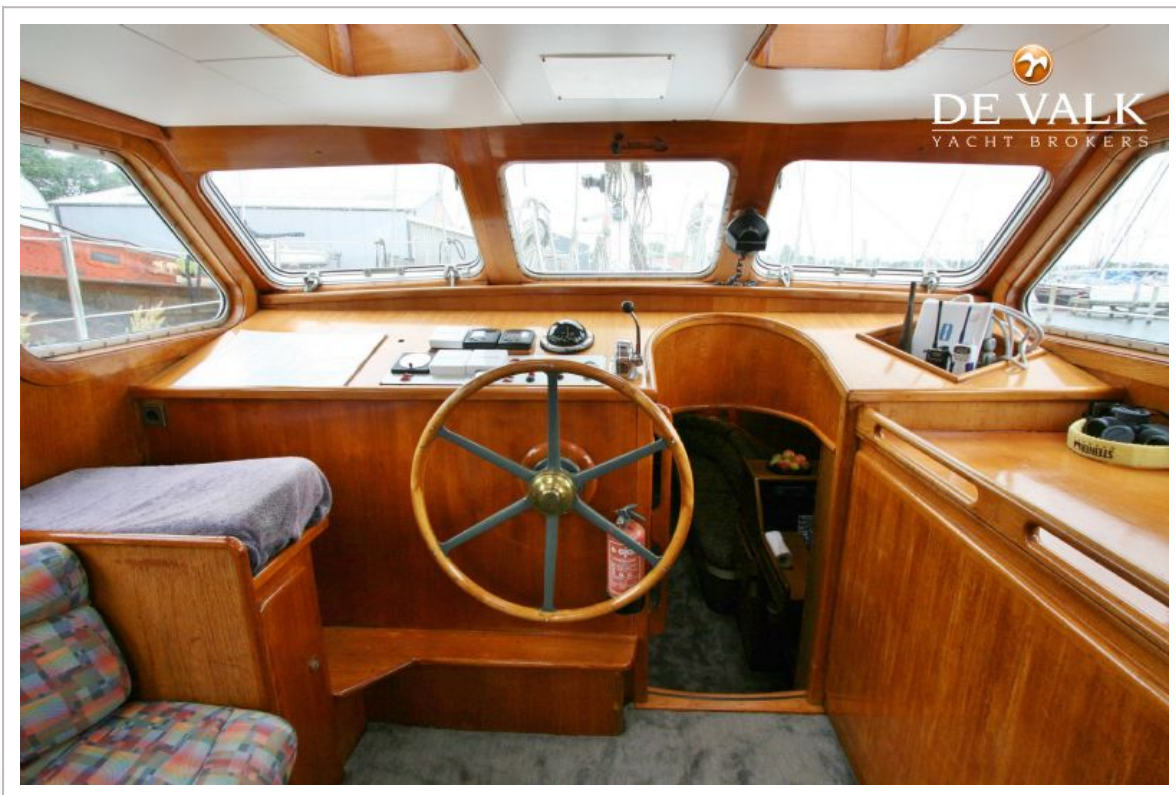
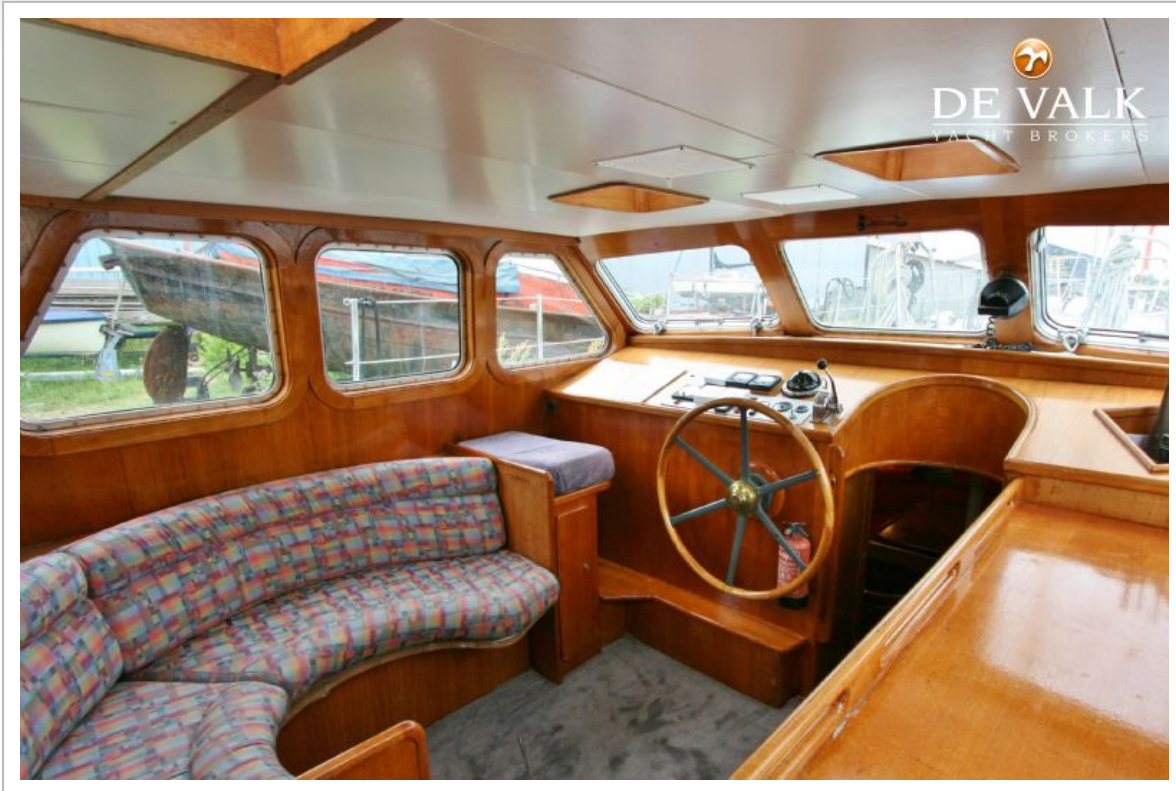
PIETER BEELDSNIJDER 49 KETCH



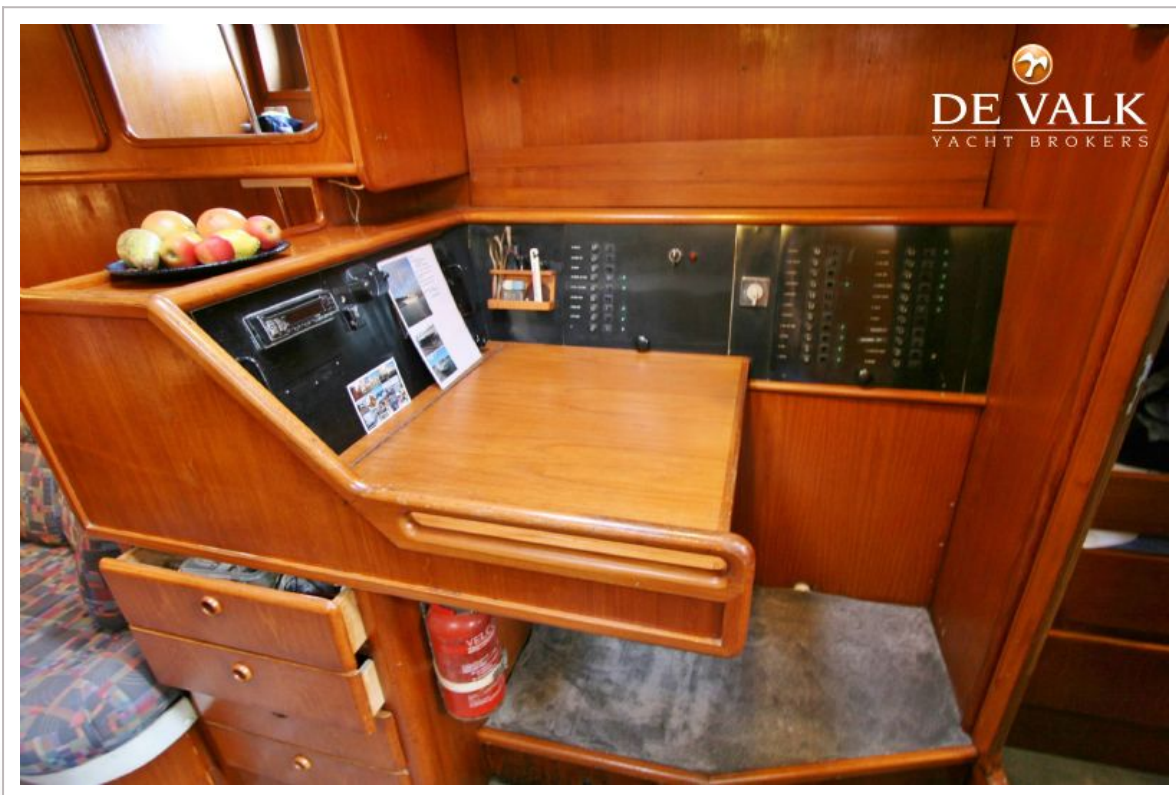
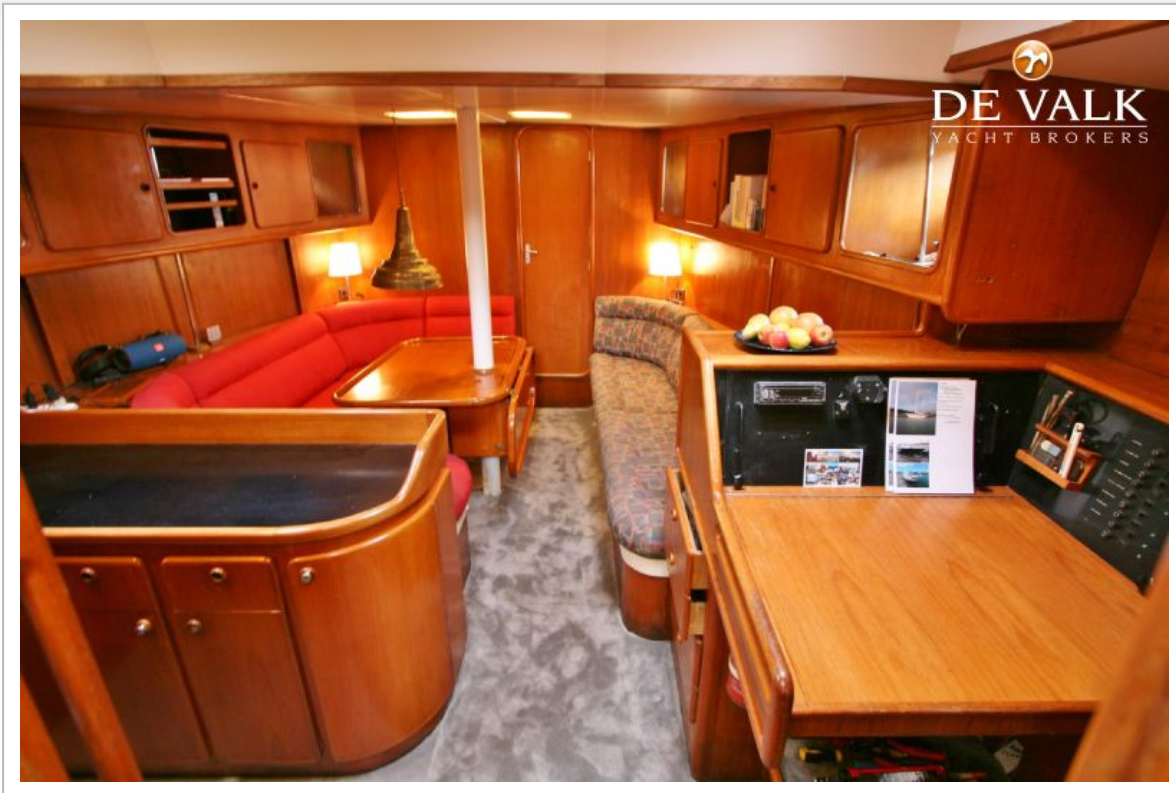
PIETER BEELDSNIJDER 49 KETCH



PIETER BEELDSNIJDER 49 KETCH



PIETER BEELDSNIJDER 49 KETCH



PIETER BEELDSNIJDER 49 KETCH



