



DE VALK
YACHT BROKERS



SWEDEN YACHTS 38



DE VALK
YACHT BROKERS

SWEDEN YACHTS 38

BROKER'S COMMENTS

The Sweden Yachts 38 has a classical beauty which will last through the years. The mast and rig are well dimensioned to carry the large sail area; this, combined with the modern hull lines, gives the yacht an amazing turn of speed, even in the lightest wind. The last years her owner did some good investments.

Johan Nooitgedagt

SPECIFICATIONS

Dimensions	11.80 x 3.85 x 1,80 / 1.80 (m)	Builder	Sweden Yachts AB
Built	1988	Cabins	3
Material	GRP	Berths	8
Engine(s)	1 x Volvo Penta 2003T diesel	Hp/Kw	43.00 (hp), 31.61 (kw)
Asking price	sold (VAT)	Lying	contact Hindeloopen

CONTACT

Sales office	De Valk Hindeloopen B.V.	Telephone	+31 514 52 40 00
Address	Oosterstrand 1 8713 JS Hindeloopen NL	E-mail	hindeloopen@devalk.nl

DISCLAIMER

These particulars are given in good faith as supplied but cannot be guaranteed.



GENERAL

Model	SWEDEN YACHTS 38
Type	sailing yacht
LOA (m)	11,80
LWL (m)	9,50
Beam (m)	3,85
Draft (m)	1,80
Draft min (m)	1,80
Air draft (m)	18,75
Headroom (m)	1,90
Year built	1988
Builder	Sweden Yachts AB
Country	Sweden
Designer	Peter Norlin
Displacement (t)	7,8
Ballast (tonnes)	lead 3,4
Hull material	GRP
Hull colour	white
Hull shape	round-bilged
Keel type	wing keel
Superstructure material	GRP
Deck material	GRP
Deck finish	teak 2016 Renovated
Cockpit deck finish	teak
Antifouling (year)	Self-sharpening antifouling international 2017
Window frame	aluminium
Window material	tempered glass
Deckhatch	3x
Fuel tank (litre)	stainless steel 100
Level indicator (fuel tank)	yes
Freshwater tank (litre)	stainless steel 320



Level indicator (freshwater)	yes
Wheel steering	mechanical New leather in 2016
Emergency tiller	yes

ACCOMMODATION

Cabins	3
Berths	8
Interior	mahogany
Floor	teak and holly
Open cockpit	yes
Saloon	yes
Headroom saloon (m)	1,90
Heating	diesel ducted hot air Webasto - 2016
Navigation center	yes
Chart table	yes
Aft Cabin	2x
Galley	yes
Countertop	plastic
Sink	stainless steel
Cooker	calor gas 3 burner - Force10
Oven	In cooker
Fridge	yes
Hot water system	220V + engine
Water pressure system	electrical
Manual and/or foot pump	yes
Crockery	yes
Owners cabin	v-bed
Bed length (m)	2
Wardrobe	hanging and drawers
Bathroom	shared
Toilet	2016



Toilet system	manual
Wash basin	yes
Shower	yes
Guest cabin 1	twin single
Bed length (m)	2
Wardrobe	hanging and drawers
Guest cabin 2	double bed
Bed length (m)	2
Wardrobe	hanging
Extra info	All cushions + upholstery replaced in 2017 incl. Curtains

MACHINERY

No of engines	1
Make	Volvo Penta
Type	2003T
HP	43,00
kW	31,61
Fuel	diesel
Year installed	1988
Maximum speed (kn)	7
Cruising speed (kn)	6
Consumption (l/hr)	3
Engine cooling system	freshwater heat exchanger
Drive	sail-drive
Engine controls	bowden cable
Gearbox	mechanical
Bowthruster	electric
Exhaust	watercooled
Propeller type	folding
Propeller blades	3
Manual bilge pump	yes



Electric bilge pump	2018
Electrical installation	12 / 220V
Start battery	1x 62 Ah - 2016
Service battery	1x 105 Ah - 2016
Bowthruster battery	1x optima red - 2018 + battery charger - 2018
Battery charger	2018
Inverter	yes
Shorepower	with cable

NAVIGATION

Compass	yes
Depth sounder	B&G - 2017
Windset	B&G - 2017
VHF	B&G - V50 DSC VHF Radio - 2017
VHF handheld	B&G - H50 Wireless handset - 2017
Autopilot	B&G NAC-3 Autopilot
Plotter/GPS	B&G Vulcan 9 - 2017
AIS receiver	Ais Transponder/receiver - 2017
Navigation lights	yes

EQUIPMENT

Sprayhood with grab rail	2016
Winter cover	Checked and repaired in 2017
Cockpit cushions	2016
Cockpit table	yes
Boarding ladder	stainless steel
Anchor	CQR Plough
Anchor chain	yes
Anchor 2	Danforth
Windlass	electrical Lewmar with remote control - 2016
Sea railing	wire



Grab rail (superstructure)	teak
Pushpit	yes
Pulpit	yes
Radar reflector	yes
Fenders	4x - 2016
Mooring lines	yes
Alarm system	yes
Radio-cd player	Kenwood
Cockpit speakers	yes
Speakers in salon	yes
Fire extinguisher	yes

RIGGING

Rigging	fractional with backstays
Standing rigging	wire Renewed in 2012
Brand mast	Seldén
Material mast	aluminium
Spreaders	2 pair
Mainsail	North Sails, renewed 2018
Mainsail cover	yes
Battcars	yes
Fully battened mainsail	yes
Cutterstay	yes
High aspect	North Sails 2007
Genoa	135% North Sails 2018
Genoa furler	yes
Gennaker	With snuffer - North Sails
Spinnaker	With snuffer
Removable innerforestay	yes
Reefing System	quick-one-line-reefing
Boomvang	mechanical



Primary sheet winch	Lewmar 40ST
Genoa sheetwinches	2x Lewmar 52ST
Halyard winches	2x Lewmar 40ST
Reefing winch	Lewmar 30ST
Multifunctional winches	2x Lewmar 30ST
Winchcovers	New 2016
Spi-pole	aluminium
Isolated backstay	yes

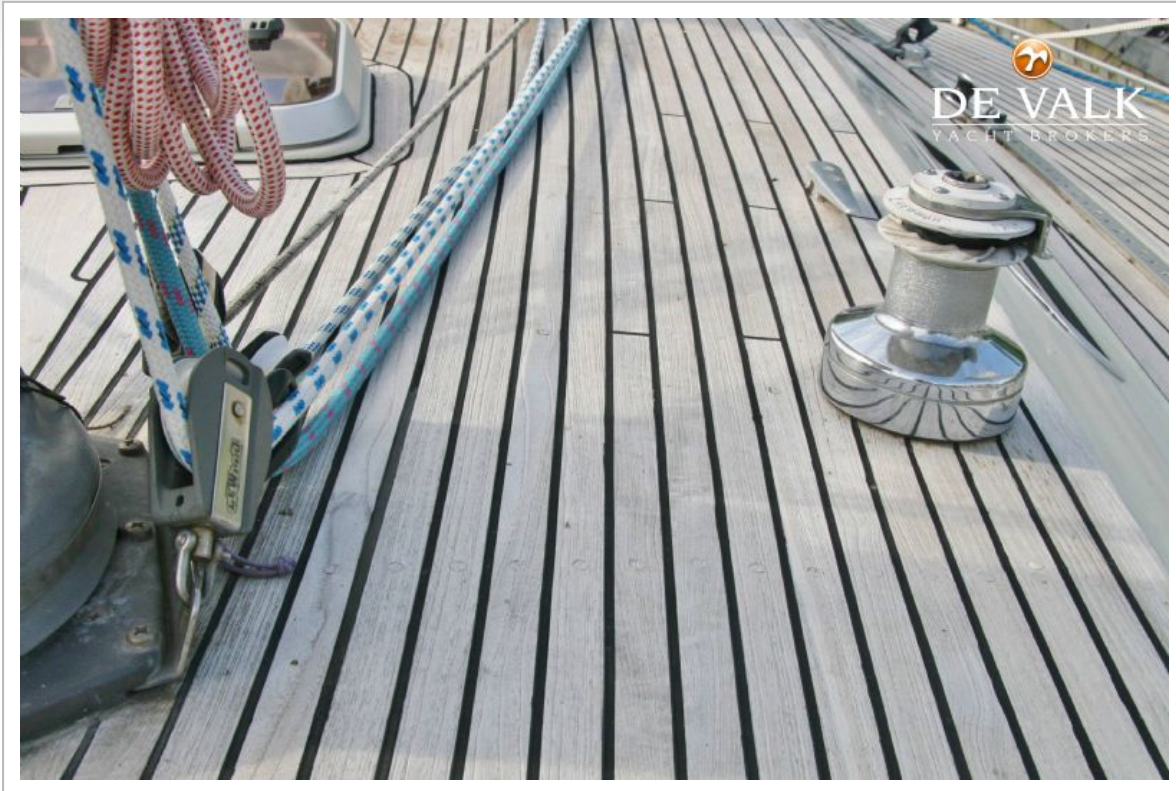


SWEDEN YACHTS 38







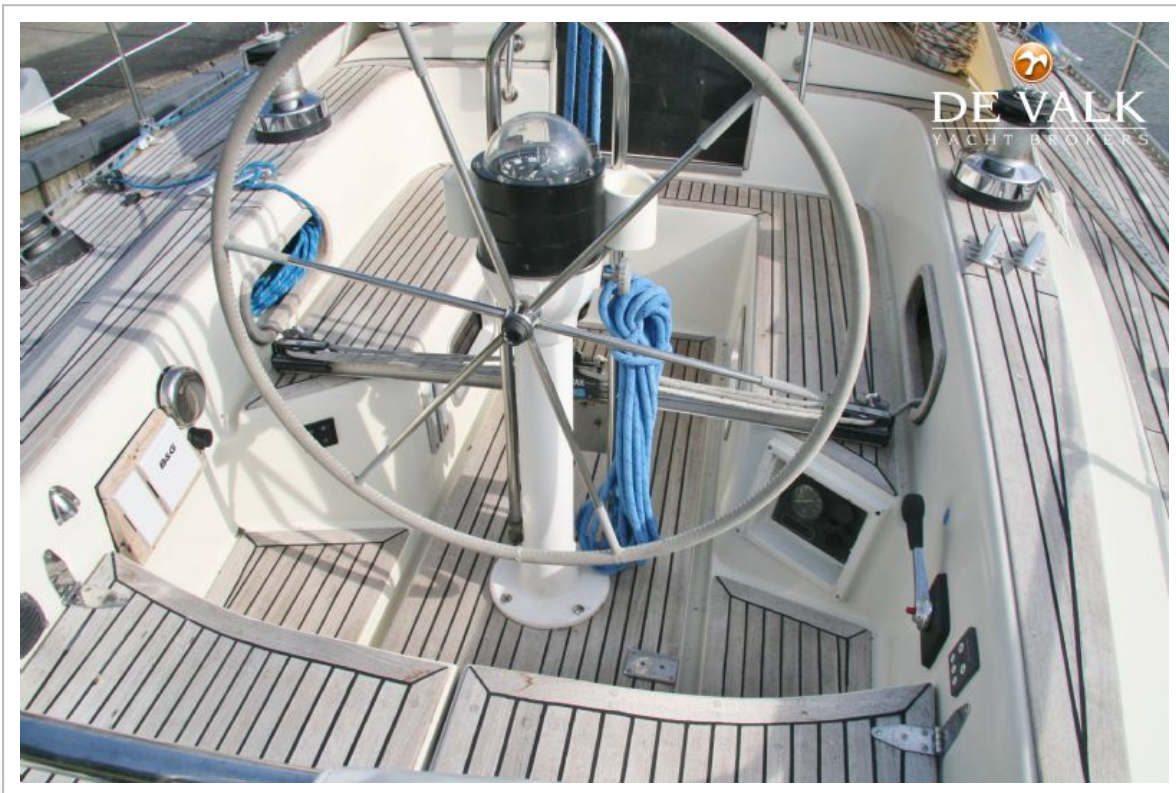




SWEDEN YACHTS 38



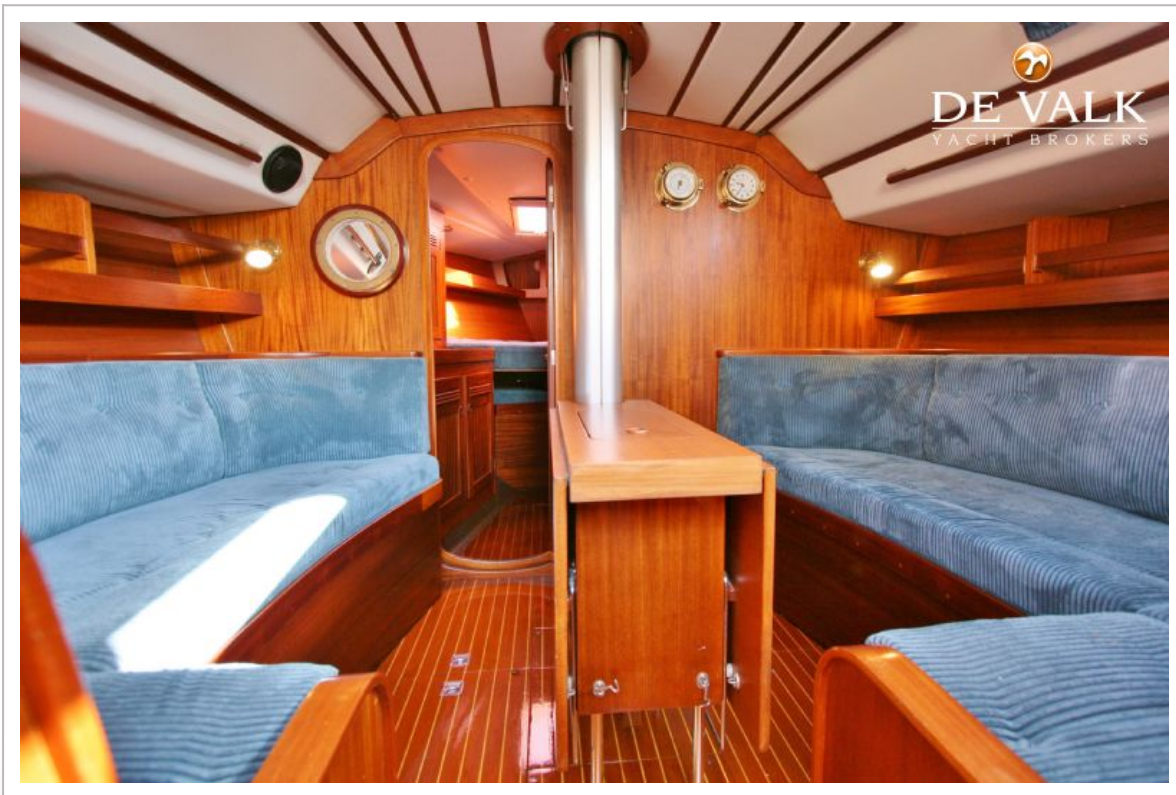
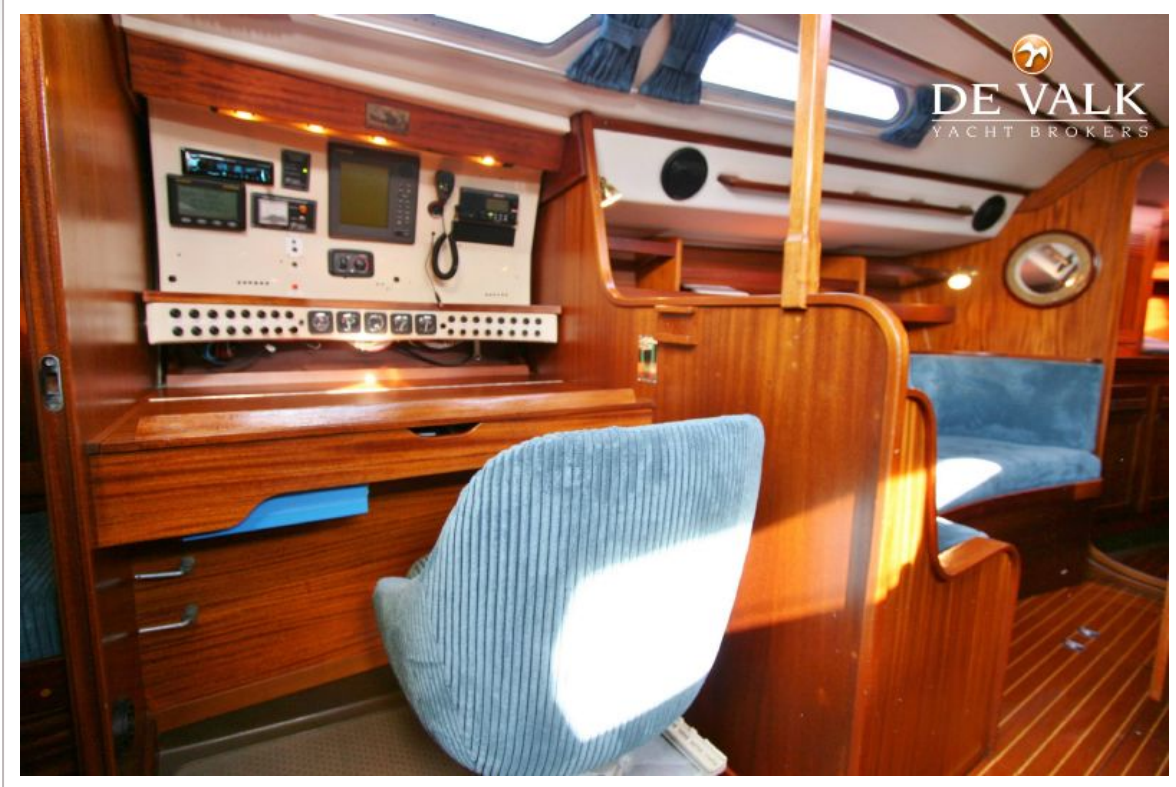




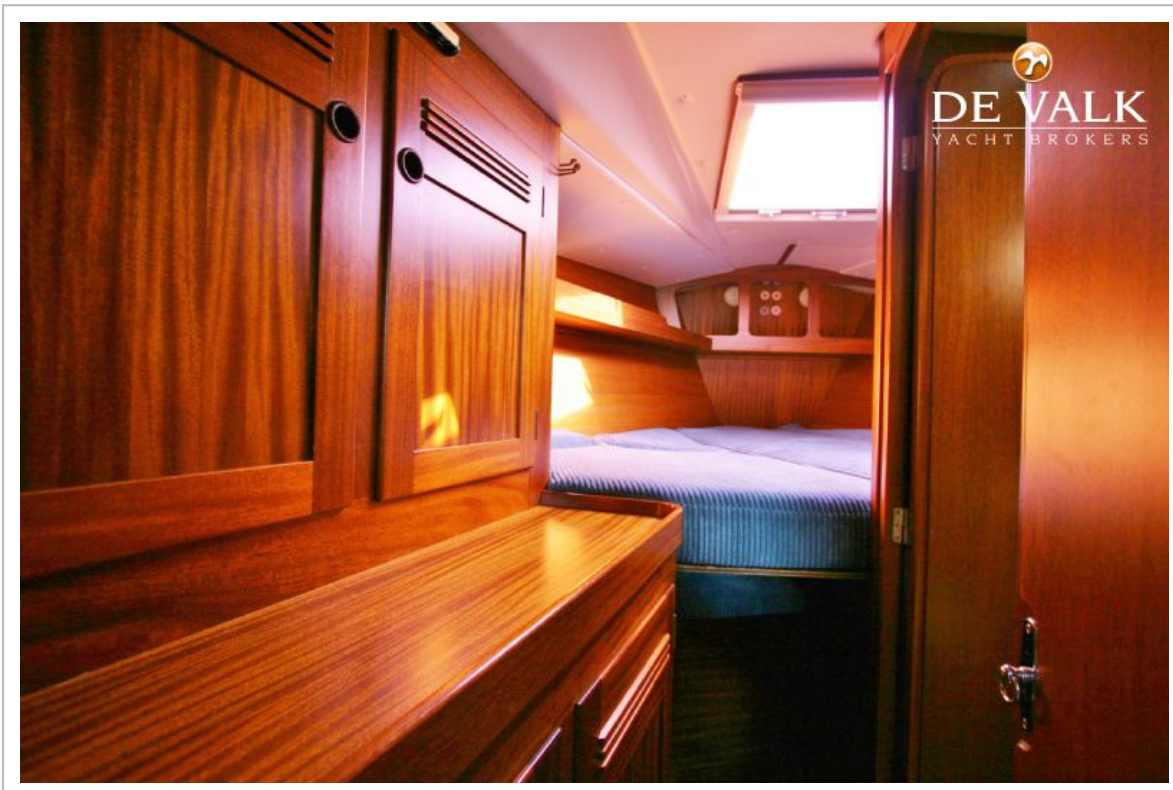




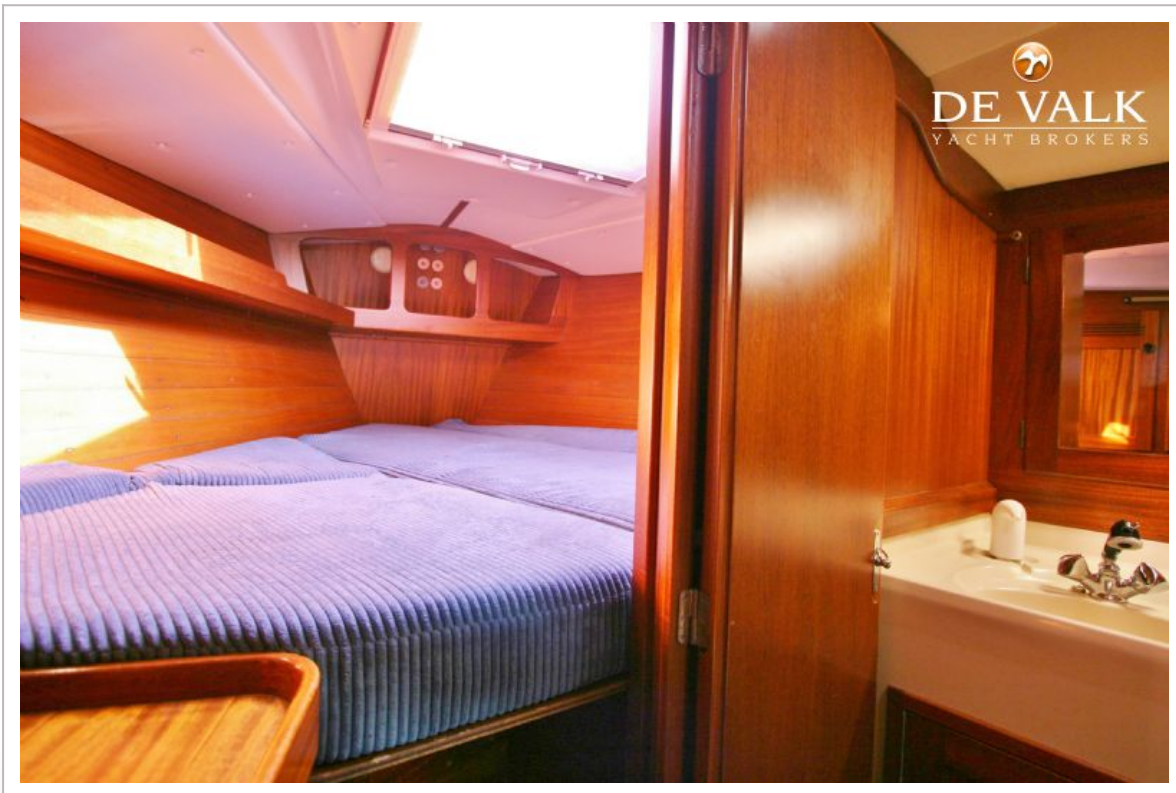
SWEDEN YACHTS 38



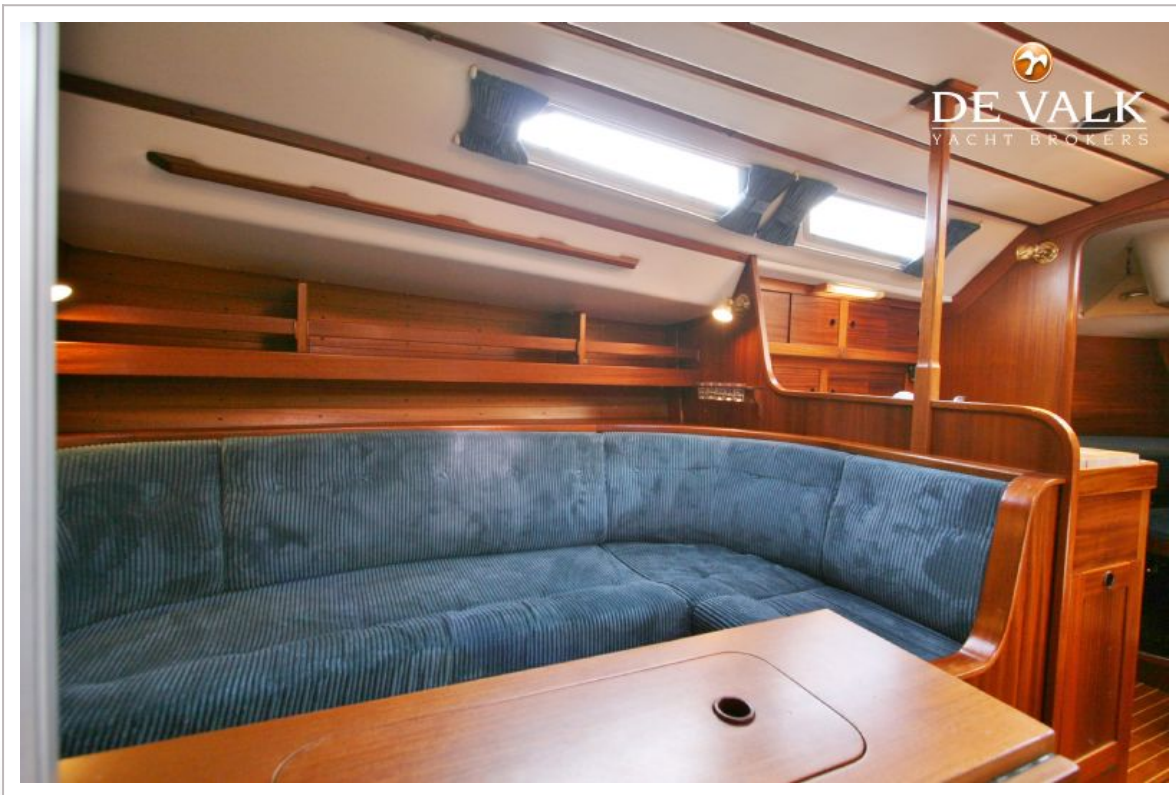
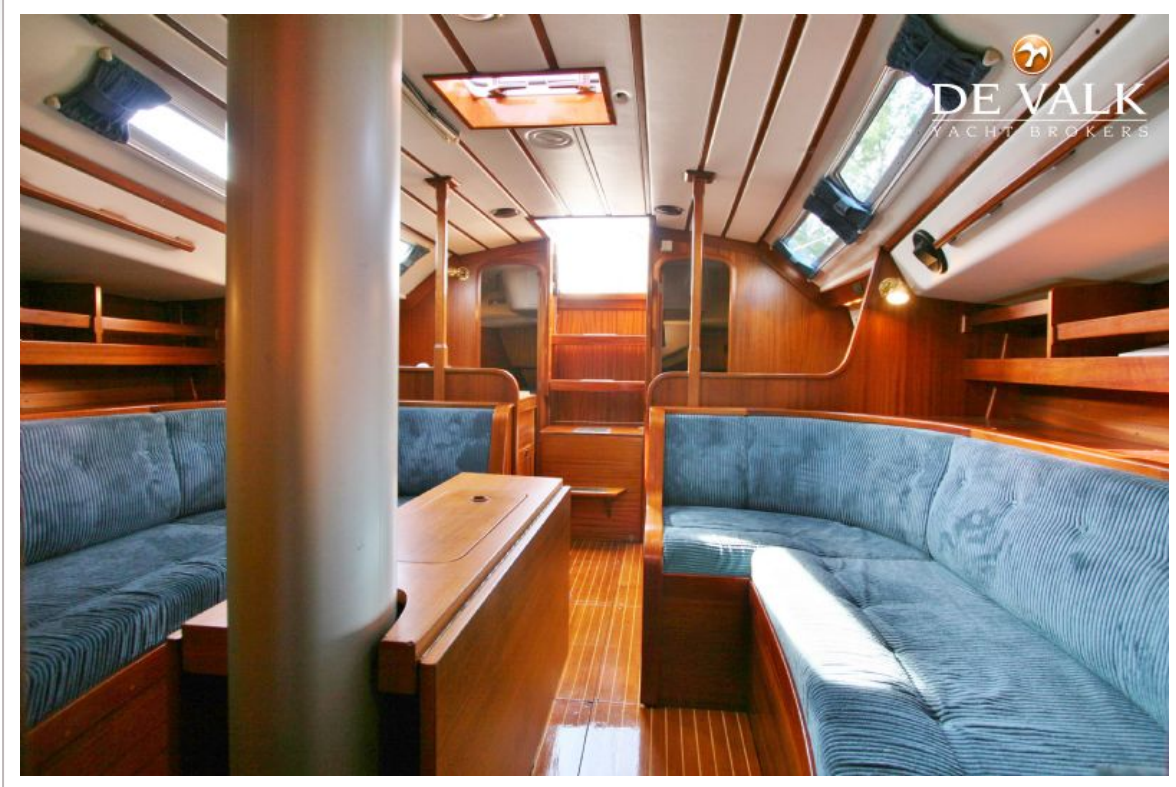
SWEDEN YACHTS 38



SWEDEN YACHTS 38

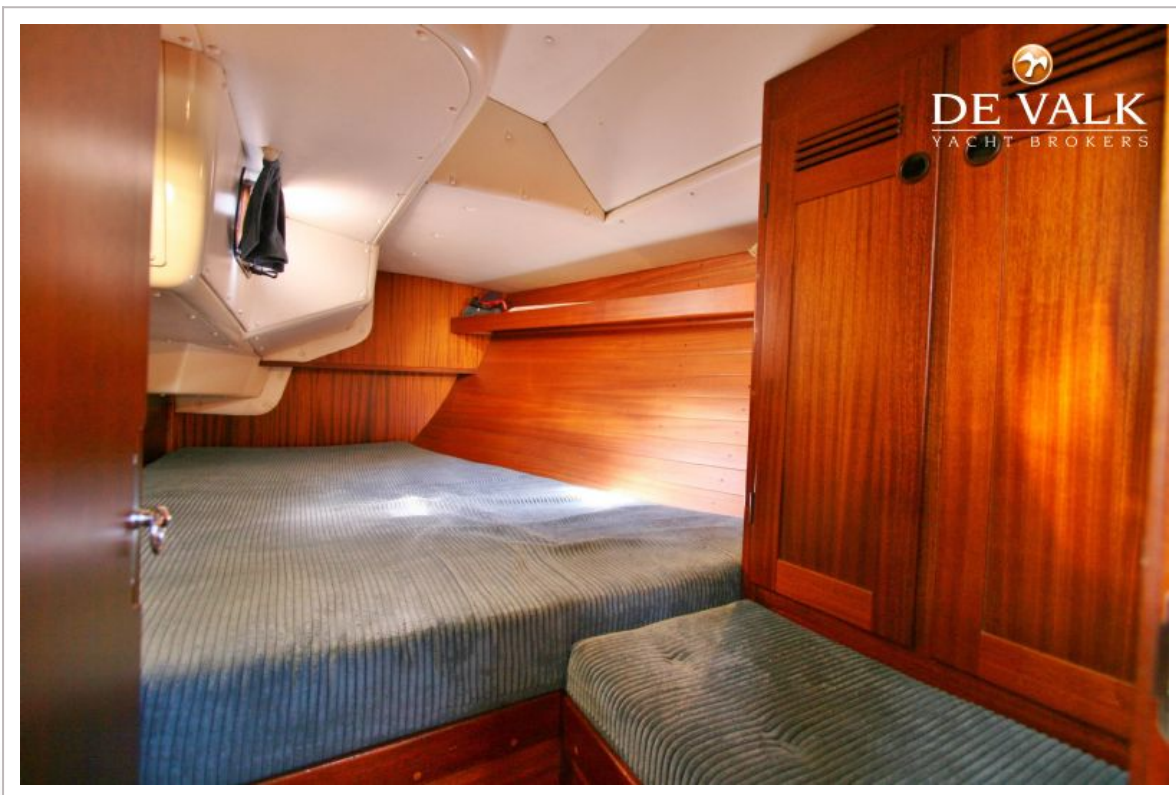


SWEDEN YACHTS 38

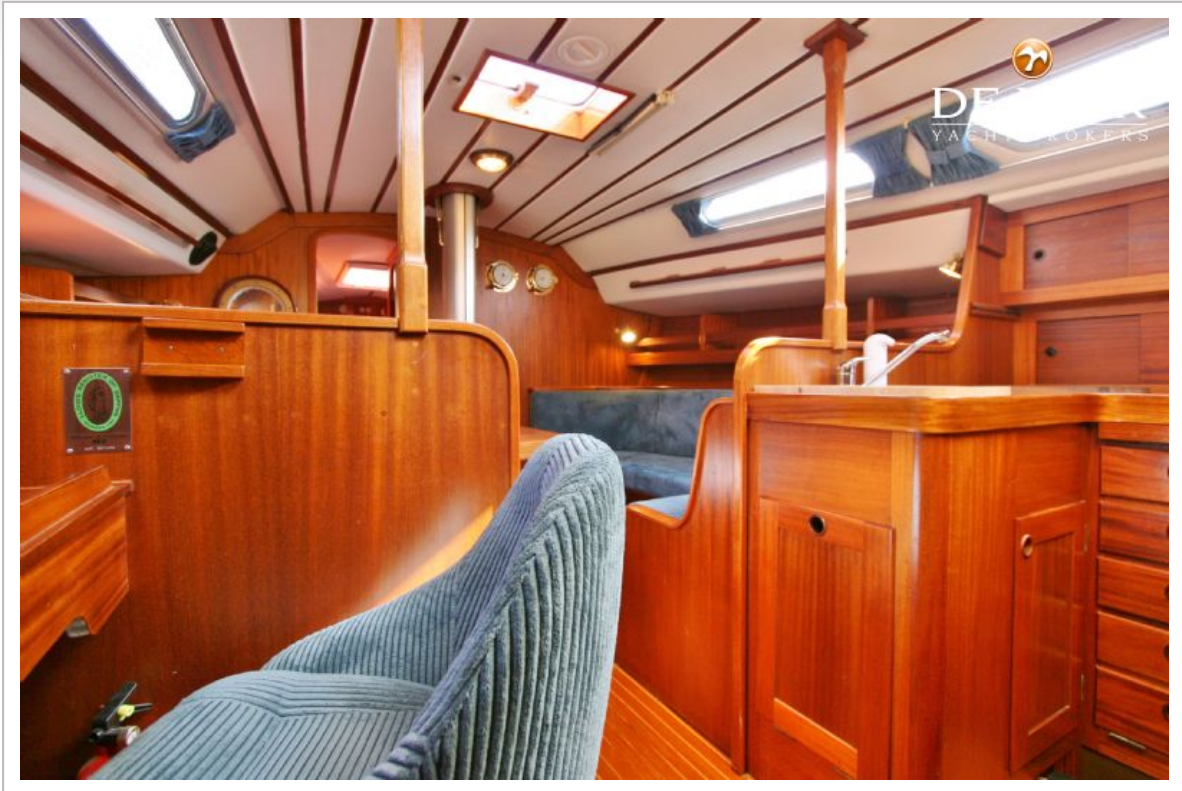




SWEDEN YACHTS 38



SWEDEN YACHTS 38



SWEDEN YACHTS 38

