



DE VALK  
YACHT BROKERS



HANSE 371



DE VALK  
YACHT BROKERS

BROKERAGE | CHARTER | BERTHS | FINANCE | INSURANCE | YACHT MANAGEMENT

## BROKER'S COMMENTS

This Hanse 371 is an elegant performance cruiser, innovative Judel & Vrolijk design with a classic touch. Her modern interior (in perfect condition, like new) offers lots of space below decks with two full size cabins and ample seating in saloon. Shiny woodwork with light panels, enough storage space throughout. Her deck layout with self-tacking jib and wheel steering makes her very easy to handle. "Fleur de Mer" is very well kept by her first owner and is now ready to be admired and inspected in our sales-harbor in Hindeloopen.

*Johan Nooitgedagt*

## SPECIFICATIONS

<b>Dimensions</b>	11.25 x 3.59 x 1.98 (m)	<b>Builder</b>	Hanse Yachts
<b>Built</b>	2005	<b>Cabins</b>	3
<b>Material</b>	GRP	<b>Berths</b>	6
<b>Engine(s)</b>	1 x Yanmar 3YM30 diesel	<b>Hp/Kw</b>	29.00 (hp), 21.34 (kw)
<b>Asking price</b>	€ 79.500 (VAT Paid)	<b>Lying</b>	contact Hindeloopen

## CONTACT

<b>Sales office</b>	De Valk Hindeloopen B.V.	<b>Telephone</b>	+31 514 52 40 00
<b>Address</b>	Oosterstrand 1 8713 JS Hindeloopen NL	<b>E-mail</b>	hindeloopen@devalk.nl

## DISCLAIMER

These particulars are given in good faith as supplied but cannot be guaranteed.



## GENERAL

Model	HANSE 371
Type	sailing yacht
LOA (m)	11,25
LWL (m)	9,85
Beam (m)	3,59
Draft (m)	1,98
Headroom (m)	1,90
Year built	2005
Builder	Hanse Yachts
Country	Germany
Designer	Judel & Vrolijk
Displacement (t)	6,9
Ballast (tonnes)	2,5
CE norm	A
Hull material	GRP
Hull colour	white
Hull shape	round-bilged
Keel type	fin keel
Superstructure material	GRP
Rubbing strake	wood
Deck material	GRP
Deck finish	teak
Superstructure deck finish	non-skid moulded in
Cockpit deck finish	teak
Window frame	aluminium
Window material	polycarbonate
Portholes	aluminium   6x Lewmar
Fuel tank (litre)	steel   77 ltr
Level indicator (fuel tank)	yes
Freshwater tank (litre)	polyethylene   240 ltr



Level indicator (freshwater)	yes
Blackwater tank (litre)	stainless steel
Wheel steering	mechanical   Lewmar steering system
Outside helm position	mechanical

## ACCOMMODATION

Cabins	3
Berths	6
Interior	cherry
Floor	teak and holly
Saloon	yes
Headroom saloon (m)	1,95 mtr.
Heating	yes
Navigation center	yes
Chart table	yes
Aft Cabin	2x
Dinette	yes
Sliding door to cockpit	yes
Countertop	Duropal
Sink	stainless steel   Double
Cooker	calor gas   2 burner   Cardanic
Oven	In Cooker
Fridge	Isotherm
Hot water system	220V + engine   Isotherm boiler
Water pressure system	electrical   Jabsco
Crockery	yes
Owners cabin	v-bed Front
Bed length (m)	1,92 x 2,00 mtr.
Wardrobe	hanging and shelves
Bathroom	shared
Toilet	shared



Toilet system	manual
Wash basin	in the bathroom
Guest cabin 1	double bed Rear
Bed length (m)	2,00 x 1,46 mtr.
Wardrobe	hanging and shelves
Guest cabin 2	double bed Rear
Bed length (m)	2,00 x 1,46 mtr.
Wardrobe	hanging and shelves
Extra info	First owner

## MACHINERY

No of engines	1
Make	Yanmar
Type	3YM30
HP	29
kW	21.34
Fuel	diesel
Maximum speed (kn)	7
Cruising speed (kn)	6
Consumption (l/hr)	3
Engine cooling system	seawater
Drive	sail-drive
Engine controls	bowden cable
Gearbox	mechanical
Exhaust	watercooled
Propeller type	folding
Propeller blades	3
Electric bilge pump	Johnson bilgepomp
Electrical installation	12 / 230 V
Batteries	3 Battery's total
Start battery	1x Vetus 12 V - 70 Ah



<b>Service battery</b>	2x Vetus 12 V - 90 Ah
<b>Battery charger</b>	Mastervolt Ivo Smart Charger 12/40-3
<b>Shorepower</b>	with cable

## NAVIGATION

<b>Compass</b>	Plastimo Olympic 135
<b>Depth sounder</b>	Garmin Airmar   Data on Simrad IS15
<b>Log</b>	Garmin Log   Data on: Simrad IS15
<b>Windset</b>	Data on Simrad IS15
<b>Autopilot</b>	Simrad WP32 wheelpilot
<b>Plotter/GPS</b>	2x Raymarine Axiom+ 7
<b>AIS transceiver</b>	New 2018   Raymarine AIS 700 Class B

## EQUIPMENT

<b>Sprayhood</b>	Skip Sails Hindeloopen
<b>Boarding ladder</b>	stainless steel
<b>Anchor</b>	CQR Plough
<b>Outboard</b>	2 HP
<b>Outboard support</b>	yes
<b>Pushpit</b>	yes
<b>Pulpit</b>	yes
<b>Fenders</b>	yes
<b>Mooring lines</b>	yes

## RIGGING

<b>Rigging</b>	sloop
<b>Standing rigging</b>	wire
<b>Brand mast</b>	Sparcraft
<b>Material mast</b>	aluminium
<b>Spreaders</b>	2x set of spreaders



<b>Mainsail</b>	yes
<b>Mainsail cover</b>	Lazy bag
<b>Fully battened mainsail</b>	yes
<b>Genoa</b>	North Sails
<b>Gennaker</b>	yes
<b>Reefing System</b>	quick-one-line-reefing
<b>Boomvang</b>	mechanical
<b>Primary sheet winch</b>	2x Harken 40 two speed self tailing
<b>Halyard winches</b>	2x Harken 40 two speed self tailing
<b>Spi-pole</b>	aluminium



# HANSE 371





# HANSE 371







# HANSE 371

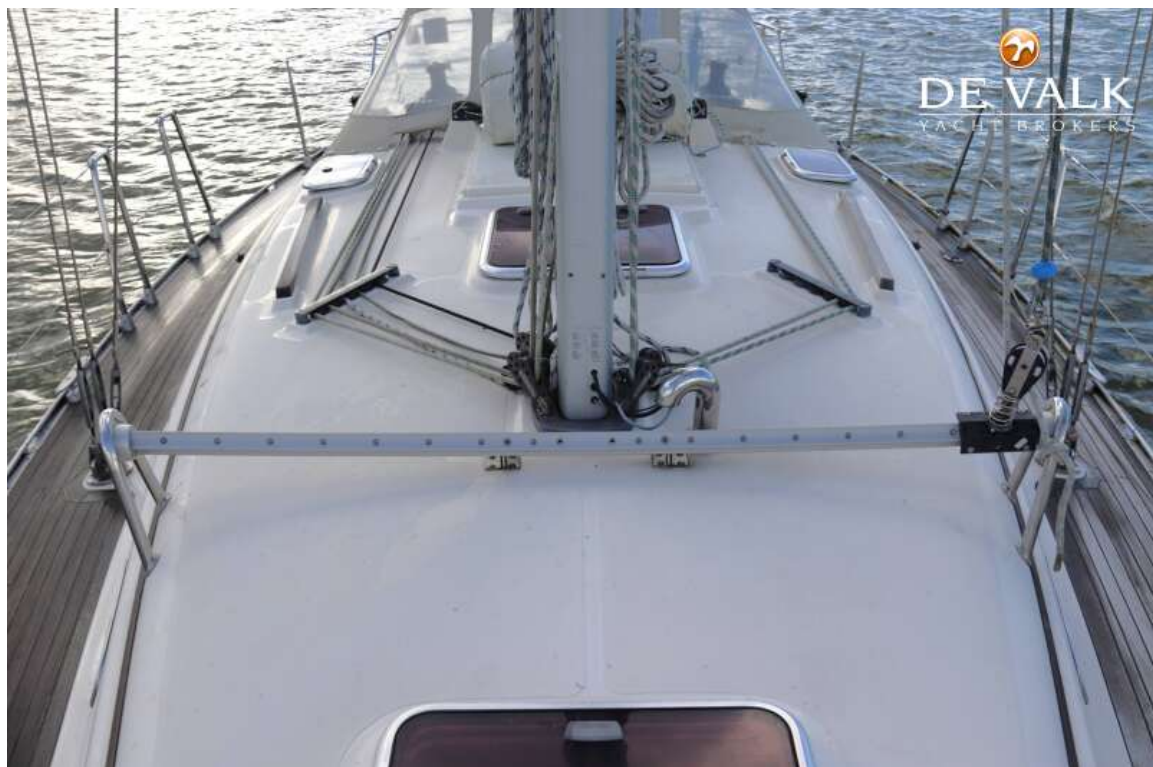


# HANSE 371

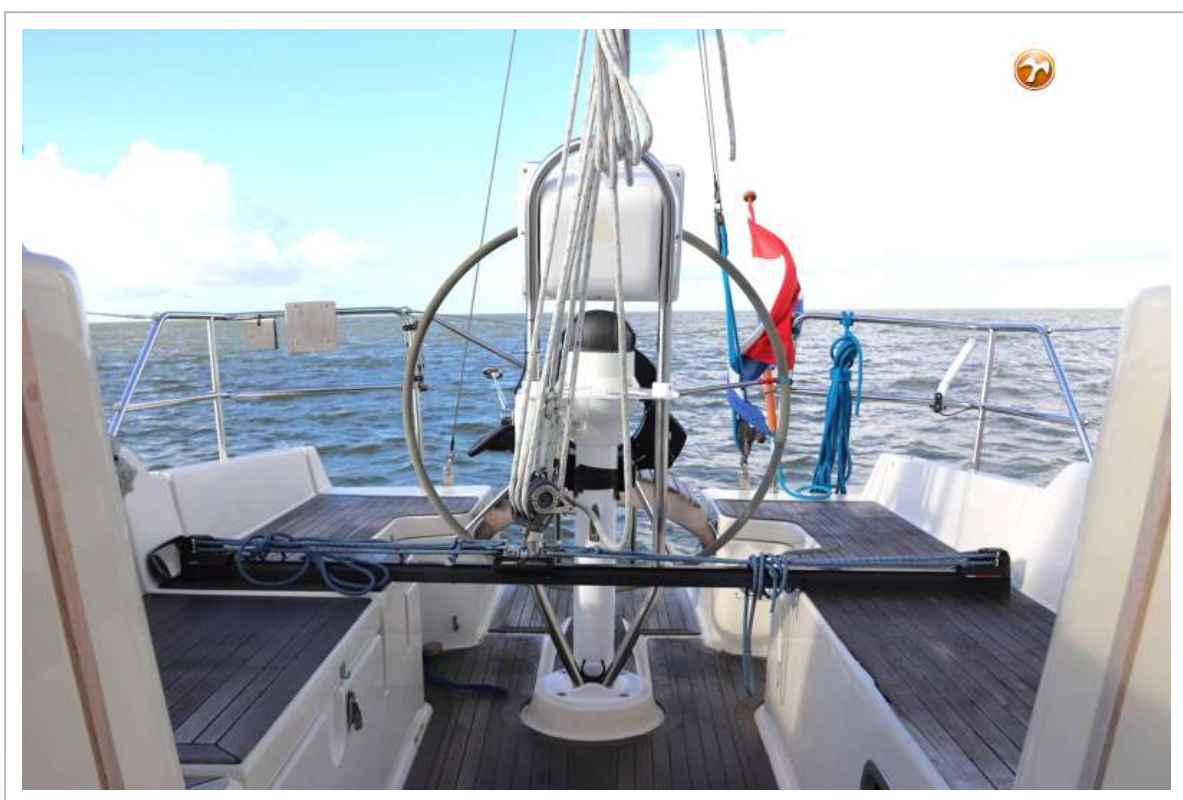




# HANSE 371



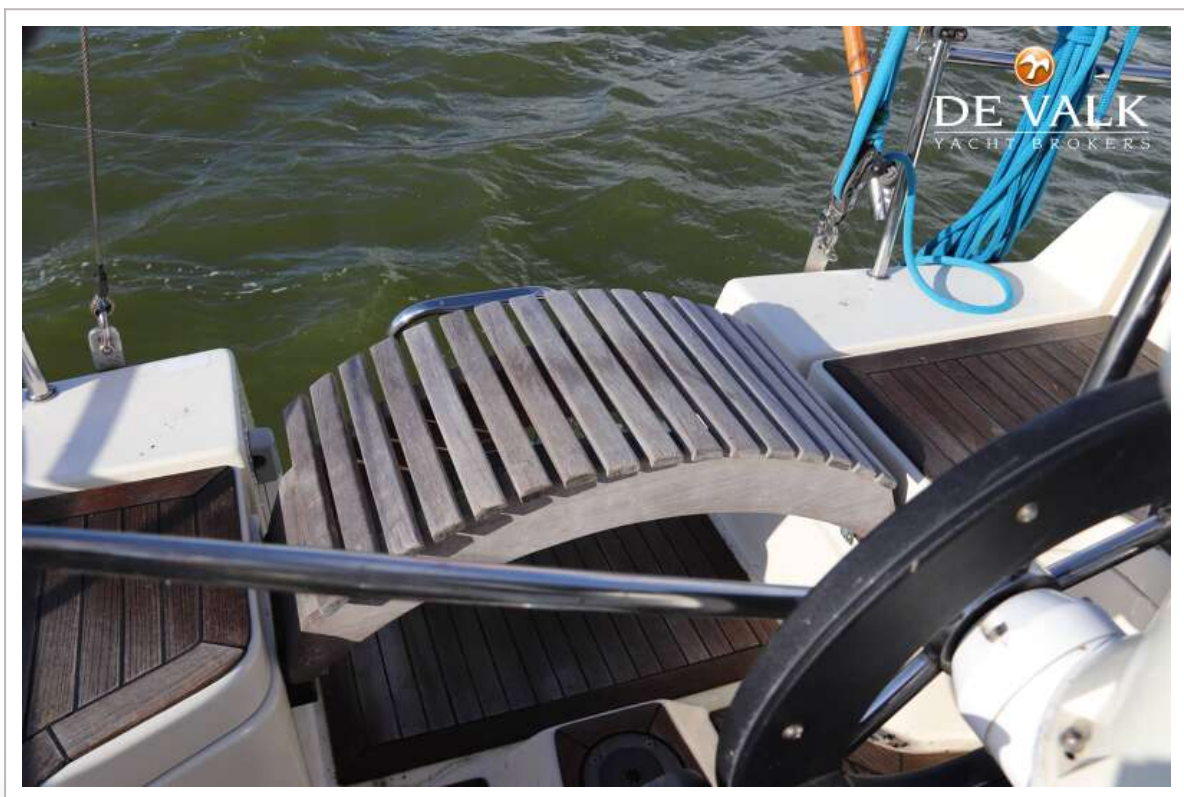
# HANSE 371





# HANSE 371







# HANSE 371



# HANSE 371





# HANSE 371

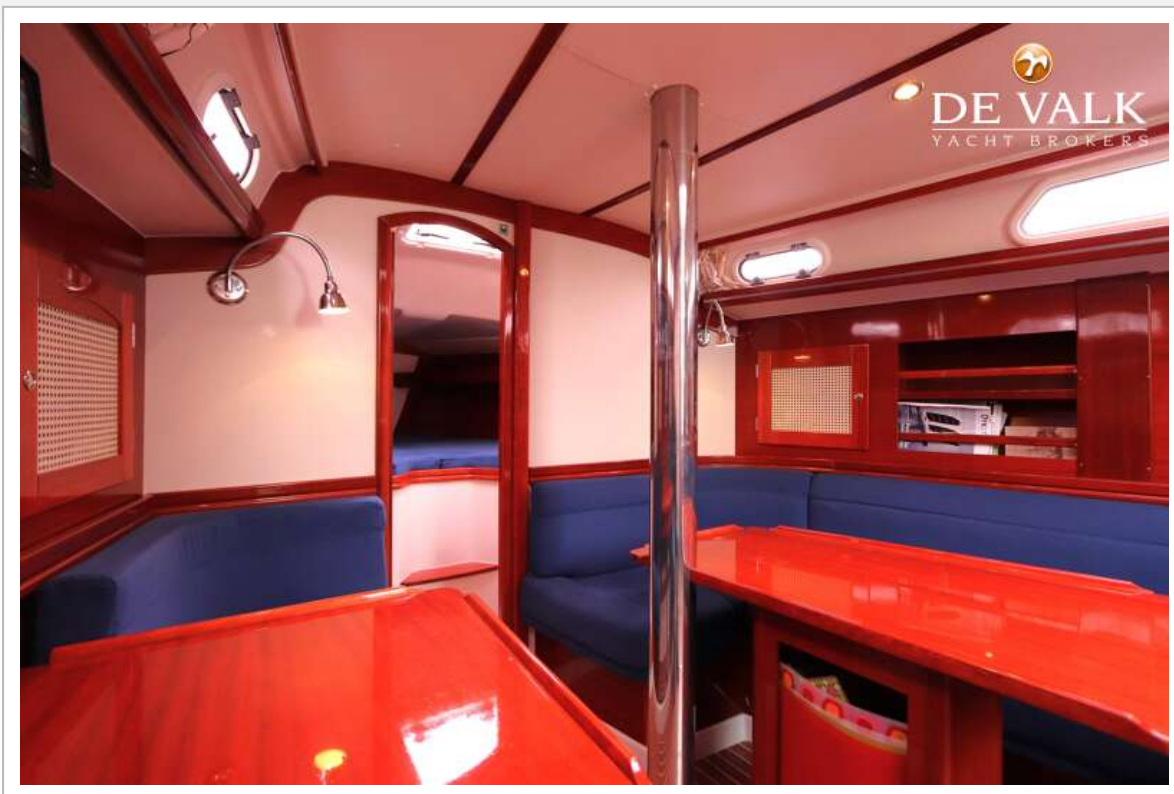


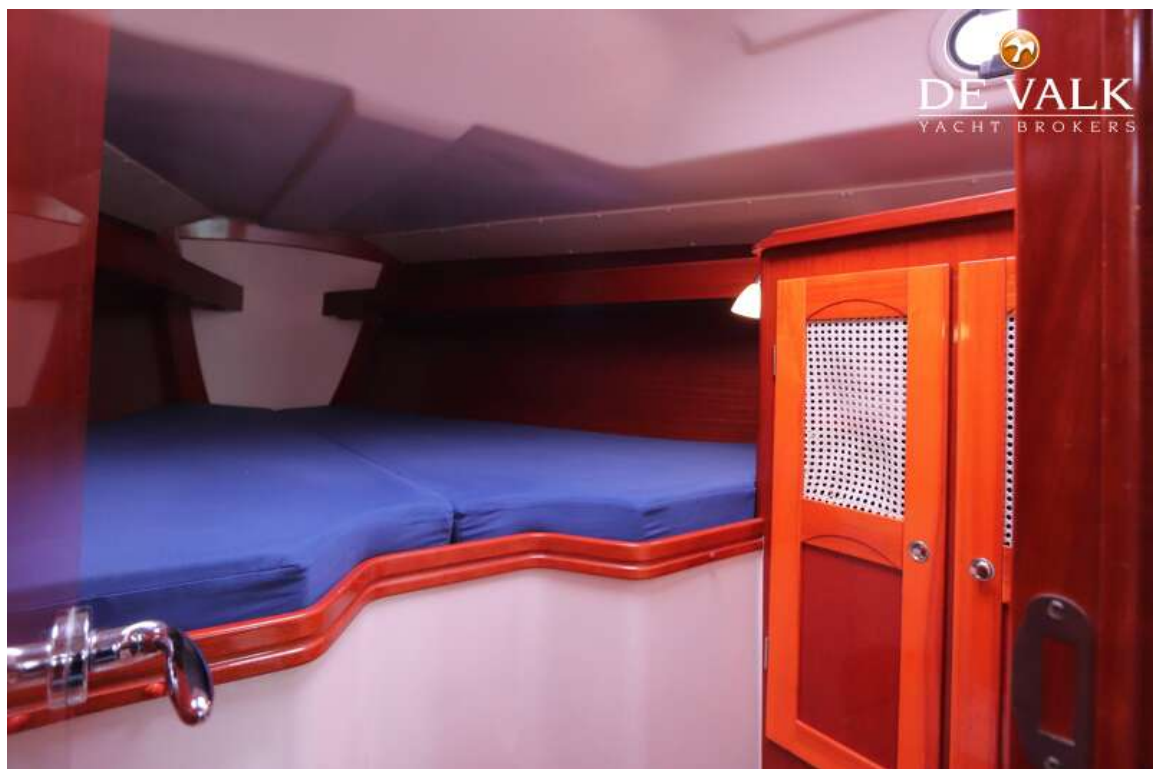
# HANSE 371





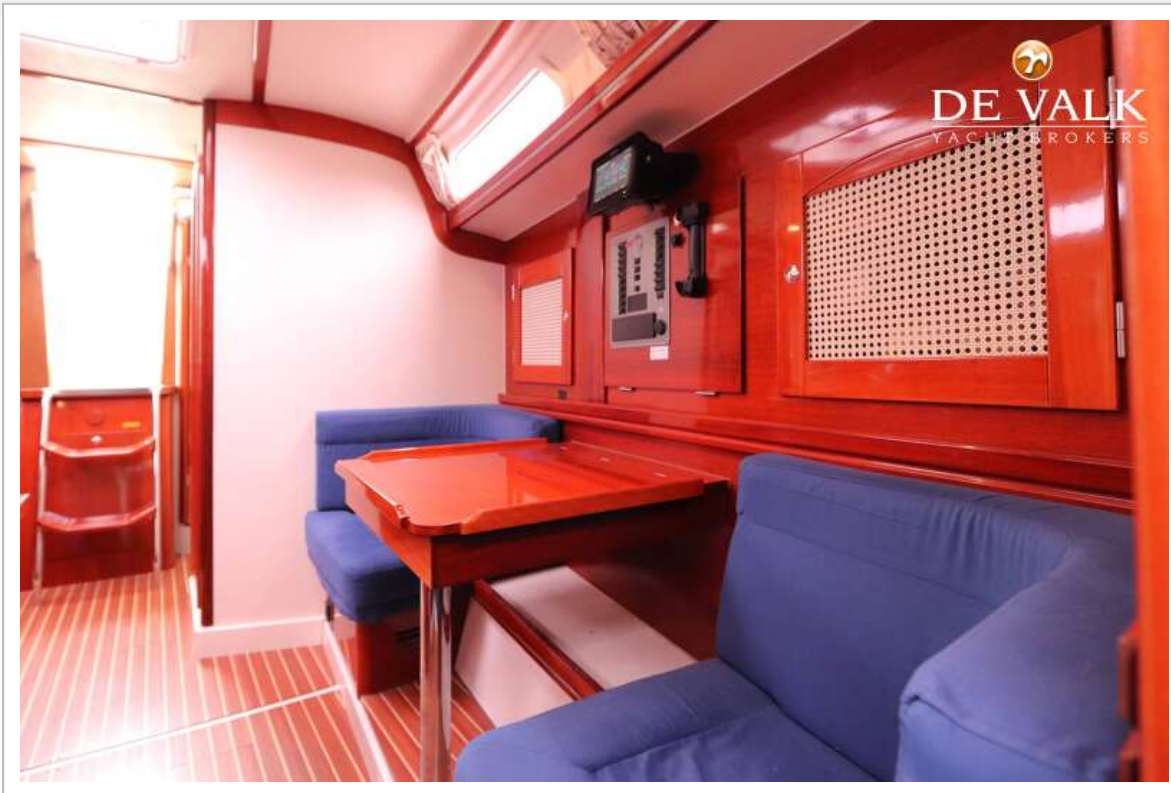
# HANSE 371







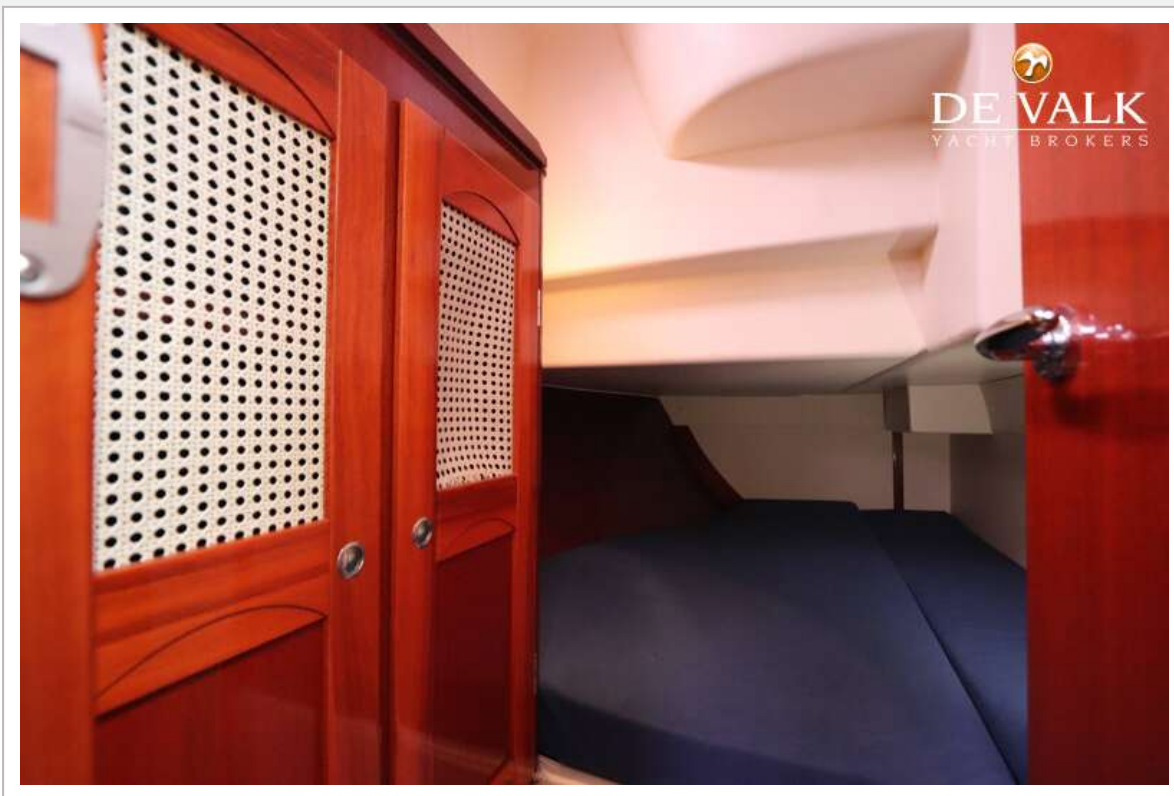
# HANSE 371







# HANSE 371



# HANSE 371

