



DE VALK
YACHT BROKERS



PUFFIN 42 OCEAN



DE VALK
YACHT BROKERS

BROKERAGE | CHARTER | BERTHS | FINANCE | INSURANCE | YACHT MANAGEMENT

PUFFIN 42 OCEAN

BROKER'S COMMENTS

The "Blue Swan" has modern comfort in a classic style, with her deckhouse, bowsprit and Bermuda cutter rig. She's built for her present owner who prefers safety combined with beautiful details. With her swing keel she can go anywhere. She is well equipped to go for long distance cruising.

Henk Sijbranda

SPECIFICATIONS

Dimensions	12.73 x 4.23 x 1,13 / 2.43 (m)	Builder	De Gier en Bezaan
Built	2001	Cabins	2
Material	Steel	Berths	6
Engine(s)	1 x Deutz DT4-29 diesel	Hp/Kw	82.99 (hp), 61.00 (kw)
Asking price	sold (VAT)	Lying	contact Hindeloopen

CONTACT

Sales office	De Valk Hindeloopen B.V.	Telephone	+31 514 52 40 00
Address	Oosterstrand 1 8713 JS Hindeloopen NL	E-mail	hindeloopen@devalk.nl

DISCLAIMER

These particulars are given in good faith as supplied but cannot be guaranteed.



GENERAL

Model	PUFFIN 42 OCEAN
Type	sailing yacht
LOA (m)	12,73
LWL (m)	11,85
Beam (m)	4,23
Draft (m)	2,43
Draft min (m)	1,13
Air draft (m)	20,20
Headroom (m)	1,90
Year built	2001
Builder	De Gier en Bezaan
Country	The Netherlands
Designer	Olivier F van Meer
Displacement (t)	16
Ballast (tonnes)	lead 4 ton internal + 1.2 ton in centreboard
CE norm	A
Hull material	steel
Hull colour	blue
Hull thickness (mm)	5mm
Hull shape	round-bilged
Keel type	centreboard
Superstructure material	steel
Superstructure (mm)	4mm
Deck plate thickness (mm)	4mm
Rubbing strake	stainless steel
Deck material	steel
Deck finish	non-skid paint
Superstructure deck finish	non-skid paint
Cockpit deck finish	teak
Dorades	3x



Window frame	copper
Window material	tempered glass Rafa
Deckhatch	7x
Portholes	yes
Insulation	yes
Fuel tank (litre)	Two tanks total approx 480
Freshwater tank (litre)	Approx 600
Blackwater tank (litre)	Approx 390
Wheel steering	Whitlock
Emergency tiller	yes

ACCOMMODATION

Cabins	2
Berths	6
Interior	mahogany
Floor	Massive ashen
Open cockpit	yes
Deck saloon	yes
Saloon	yes
Headroom saloon (m)	1,90
Heating	Dickinson diesel
Navigation center	yes
Chart table	yes
Galley	yes
Countertop	stainless steel
Sink	stainless steel Double
Cooker	electric Force10
Oven	In Cooker
Fridge	With freezer compartment
Hot water system	220V + engine
Water pressure system	electrical



Owners cabin	yes
Bed length (m)	2
Wardrobe	hanging and shelves
Toilet	separate & shared
Toilet system	manual
Wash basin	By toilet and shower
Shower	separate & shared
Guest cabin 1	double bed
Bed length (m)	1,90
Wardrobe	hanging and shelves

MACHINERY

No of engines	1
Make	Deutz
Type	DT4-29
HP	82,99
kW	61,00
Fuel	diesel
Year installed	2001
Maximum speed (kn)	7,5
Cruising speed (kn)	6
Engine cooling system	freshwater heat exchanger
Drive	shaft
Engine controls	bowden cable
Bowthruster	electric
Exhaust	watercooled
Propeller type	feathering
Propeller blades	3
Propeller shaft material	stainless steel
Manual bilge pump	yes
Electric bilge pump	yes



Electrical installation	12 / 24 / 220
Generator	Fisher Panda
Battery charger	yes
Inverter	yes
Shorepower	with cable

NAVIGATION

Compass	Whitlock
Windset	Raymarine i60
Repeater	Raymarine i70 Multifunctioneel
VHF	Raymarine
Autopilot	Raymarine p70s
Radar	Raymarine
Radar/GPS/plotter	Raymarine aSerie

EQUIPMENT

Boarding ladder	stainless steel
Anchor	yes
Anchor chain	yes
Windlass	electrical Lofrans
Outboard support	yes
Sea railing	stainless steel
Railing side opening gates	yes
Pushpit	yes
Pulpit	yes
Fenders	yes
Mooring lines	yes
Radio-cd player	yes

RIGGING



PUFFIN 42 OCEAN

Rigging	sloop
Standing rigging	wire
Material mast	aluminium coated
Spreaders	2 pair
Mainsail	yes
Mainsail cover	yes
Fully battened mainsail	yes
Furling boom	yes
Genoa	yes
Genoa furler	yes
Gennaker	yes
Staysail	yes
Staysail furler	yes
Reefing System	main in-boom furling
Backstay adjuster	Navtec
Boomvang	gasspring
Primary sheet winch	1x Andersen 28ST
Secondary sheet winch	2x Andersen 46ST - electric
Genoa sheetwinches	2x Andersen 52ST - electric
Halyard winches	1x Andersen 28ST



PUFFIN 42 OCEAN



PUFFIN 42 OCEAN



PUFFIN 42 OCEAN



PUFFIN 42 OCEAN



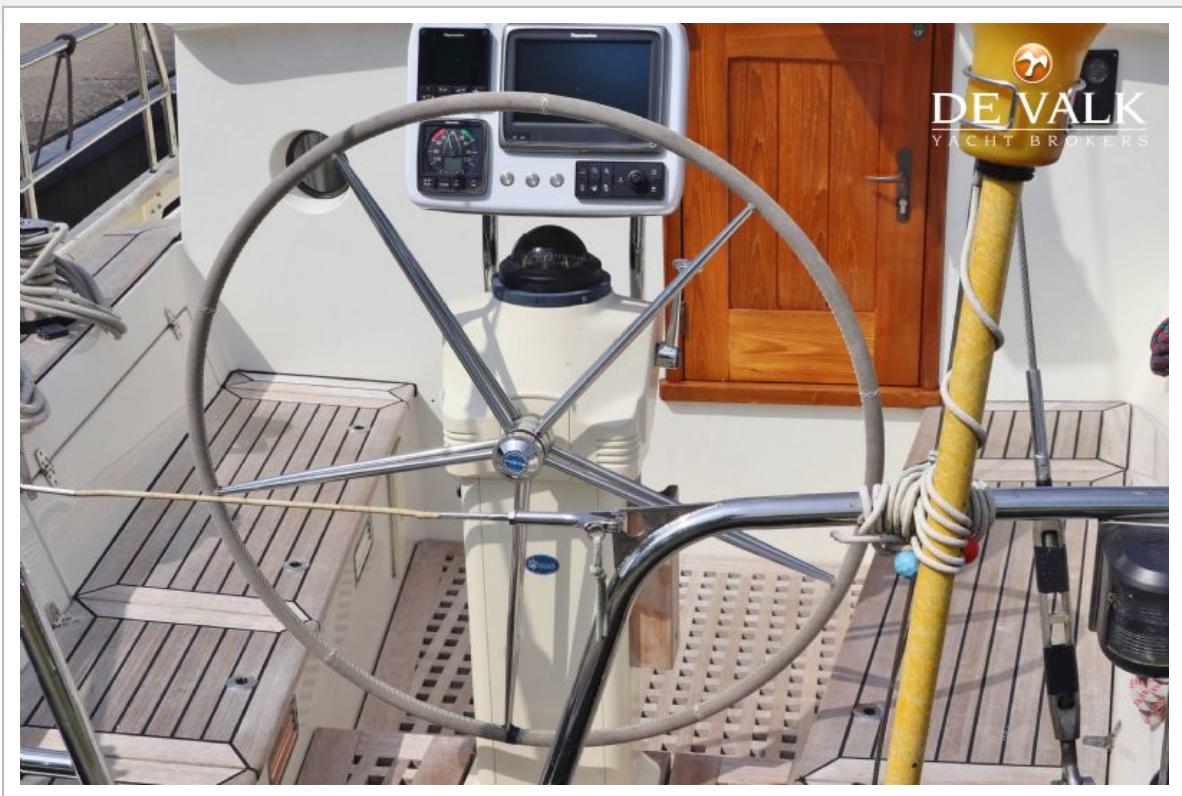
PUFFIN 42 OCEAN



PUFFIN 42 OCEAN



PUFFIN 42 OCEAN



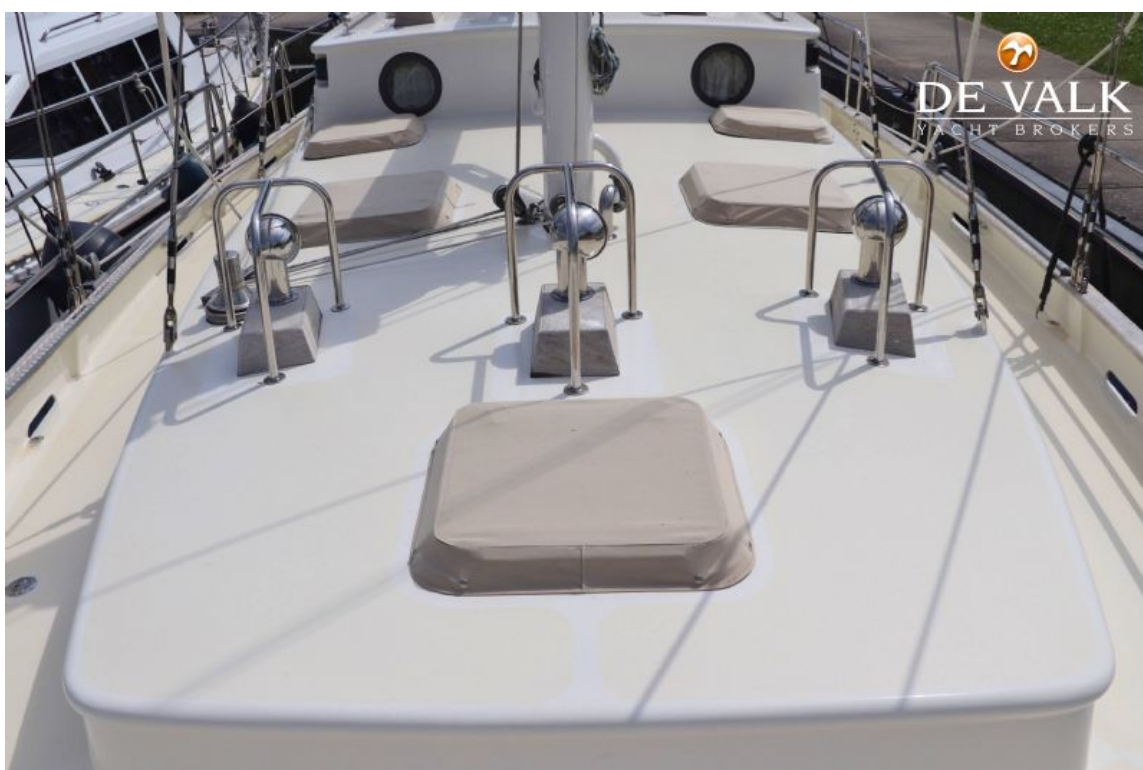
PUFFIN 42 OCEAN



PUFFIN 42 OCEAN



PUFFIN 42 OCEAN



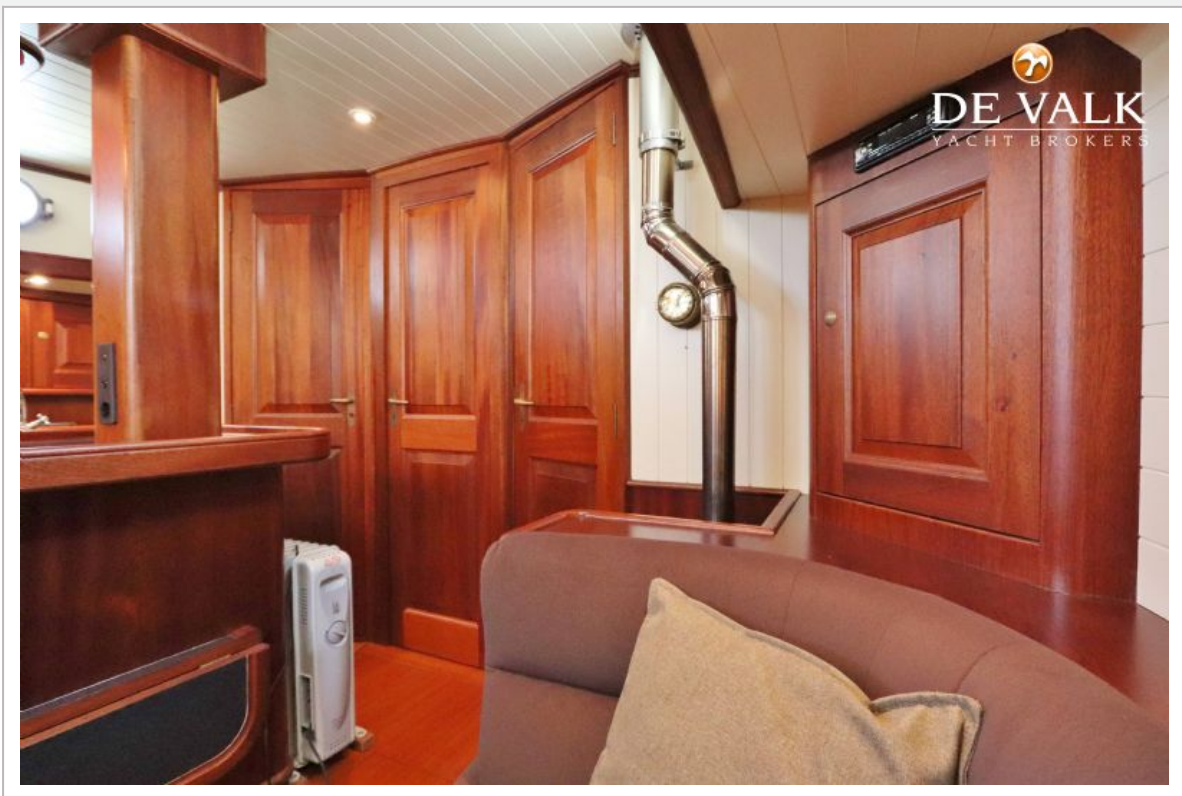
PUFFIN 42 OCEAN



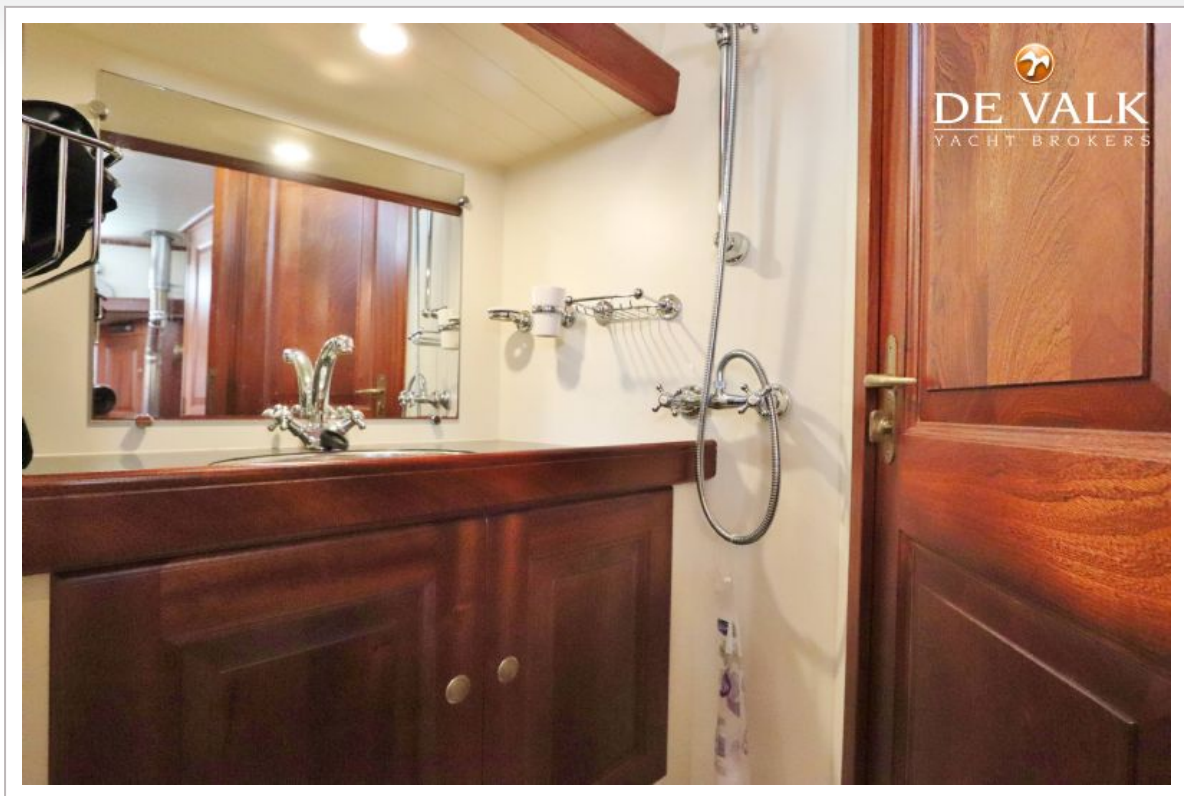
PUFFIN 42 OCEAN



PUFFIN 42 OCEAN



PUFFIN 42 OCEAN



PUFFIN 42 OCEAN



PUFFIN 42 OCEAN



PUFFIN 42 OCEAN



PUFFIN 42 OCEAN



PUFFIN 42 OCEAN

