



BAVARIA CRUISER 33



DE VALK
YACHT BROKERS

BAVARIA CRUISER 33

BROKER'S COMMENTS

Launched in 2016 and now offered this very beautiful and well maintained Bavaria Cruiser 33 is the ideal yacht for larger trips or just to enjoy sailing on local waters. The Bavaria 33 Cruiser offers privacy as well as extra comfort due to the larger space due to the 2 cabin design. She is open for viewing 7 days a week at our location in Hindeloopen.

Henri van Eelen

SPECIFICATIONS

Dimensions	9.99 x 3.42 x 1.57 (m)	Builder	bavaria Yachts
Built	2016	Cabins	2
Material	GRP	Berths	6
Engine(s)	1 x Volvo Penta D1-30F diesel	Hp/Kw	30.00 (hp), 22.08 (kw)
Asking price	sold (VAT)	Lying	at sales office

CONTACT

Sales office	De Valk Hindeloopen B.V.	Telephone	+31 514 52 40 00
Address	Oosterstrand 1 8713 JS Hindeloopen NL	E-mail	hindeloopen@devalk.nl

DISCLAIMER

These particulars are given in good faith as supplied but cannot be guaranteed.



BAVARIA CRUISER 33

GENERAL

Model	BAVARIA CRUISER 33
Type	sailing yacht
LOA (m)	9,99
LWL (m)	8,85
Beam (m)	3,42
Draft (m)	1,57
Air draft (m)	14,80
Headroom (m)	1,84
Year built	2016
Builder	Bavaria Yachts
Country	Germany
Designer	Bruce Farr
Displacement (t)	5,5
Ballast (tonnes)	1,3
CE norm	A
Hull material	GRP
Hull colour	white
Hull shape	round-bilged
Keel type	fin keel
Superstructure material	GRP
Rubbing strake	aluminum
Deck material	GRP
Deck finish	non-skid moulded in
Superstructure deck finish	non-skid moulded in
Cockpit deck finish	teak
Deckhatch	3x Flush with blinds and fly screens
Fuel tank (litre)	polyethylene Approx 150 ltr.
Level indicator (fuel tank)	Bavaria display
Freshwater tank (litre)	polyethylene Approx 150 ltr.
Level indicator (freshwater)	Bavaria display



Blackwater tank (litre)	Approx 60 ltr.
Blackwater tank extraction	deck extraction + uw line
Wheel steering	mechanical
Emergency tiller	Yes

ACCOMMODATION

Cabins	2
Berths	6
Interior	mahogany
Floor	teak and holly
Saloon	yes
Headroom saloon (m)	yes
Heating	diesel ducted hot air Websto AirTop Evo M
Chart table	yes
Aft Cabin	yes
Galley	yes
Sink	stainless steel
Cooker	calor gas Techimpex 2 burner
Oven	In cooker
Fridge	Isotherm
Hot water system	220V + engine Sigmar 20 ltr.
Water pressure system	electrical
Owners cabin	double bed
Bed length (m)	2 mtr.
Wardrobe	hanging and shelves
Guest cabin 1	double bed
Bed length (m)	2 mtr.
Wardrobe	hanging and shelves
Bathroom	shared
Toilet	Jabsco
Toilet system	manual



BAVARIA CRUISER 33

Wash basin	yes
Shower	yes

MACHINERY

No of engines	1
Make	Volvo Penta
Type	D1-30F
HP	30
kW	22.08
Fuel	diesel
Year installed	2016
Engine cooling system	freshwater heat exchanger
Drive	sail-drive
Saildrive seal	yes
Engine controls	bowden cable
Gearbox	mechanical
Bowthruster	electric Side Power
Exhaust	watercooled
Manual bilge pump	yes
Electric bilge pump	yes
Electrical installation	12 / 220V
Start battery	1x 70 AH Varta
Service battery	3x 95Ah Exide AGM
Bowthruster battery	1x 95Ah Exide AGM
Battery charger	Automatic charger 12V/40A
Shorepower	with cable

NAVIGATION

Compass	Plastimo
Multi control display	Garmin GNX 20
VHF	Garmin GHS 10i



Autopilot	Garmin GHC20
Rudder angle indicator	On autopilot
Plotter/GPS	Garmin GPSmap 820
AIS receiver	yes
Navigation lights	yes

EQUIPMENT

Sprayhood with grab rail	yes
Cockpit table	yes
Bathing platform	Foldable
Boarding ladder	stainless steel
Deck shower	yes
Anchor	Delta
Anchor chain	yes
Windlass	electrical Quick
Sea railing	wire
Grab rail (superstructure)	stainless steel
Railing side opening gates	Yes
Pushpit	yes
Pulpit	yes
Fenders	yes
Mooring lines	yes
Radio	Fusion MS-RA205 inside Fusion MS-NRX200i outside
Cockpit speakers	yes
Speakers in salon	yes
Fire extinguisher	yes

RIGGING

Rigging	sloop
Standing rigging	wire
Brand mast	Seldén



BAVARIA CRUISER 33

Material mast	aluminium
Spreaders	2 pair
Mainsail	Elvstrøm Sails
Stoway mast	Seldén
Jib	yes
Genoa furler	Furlex 204S
Reefing System	main in-mast furling
Backstay adjuster	tackle
Boomvang	gasspring
Genoa sheetwinches	2x Lewmar 30 EVO 2 gear self tailing
Halyard winches	2x Lewmar 15 EVO 2 gear self tailing



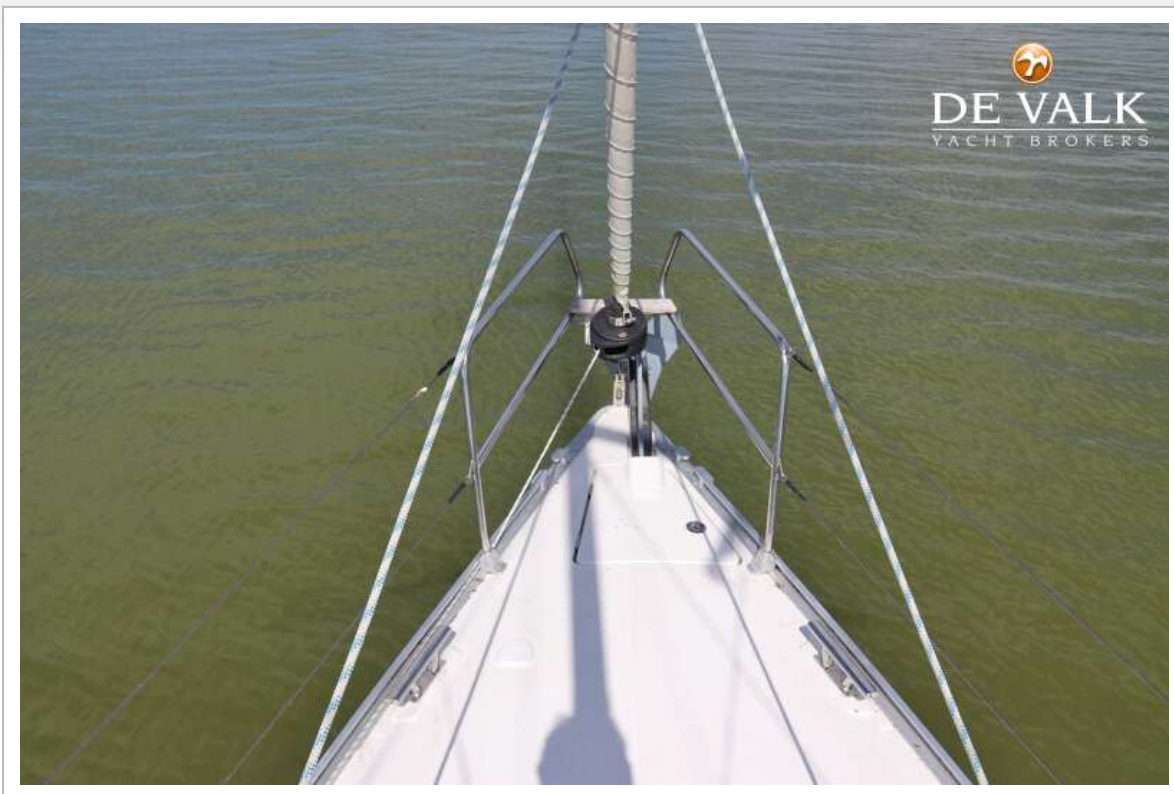
BAVARIA CRUISER 33



BAVARIA CRUISER 33



BAVARIA CRUISER 33



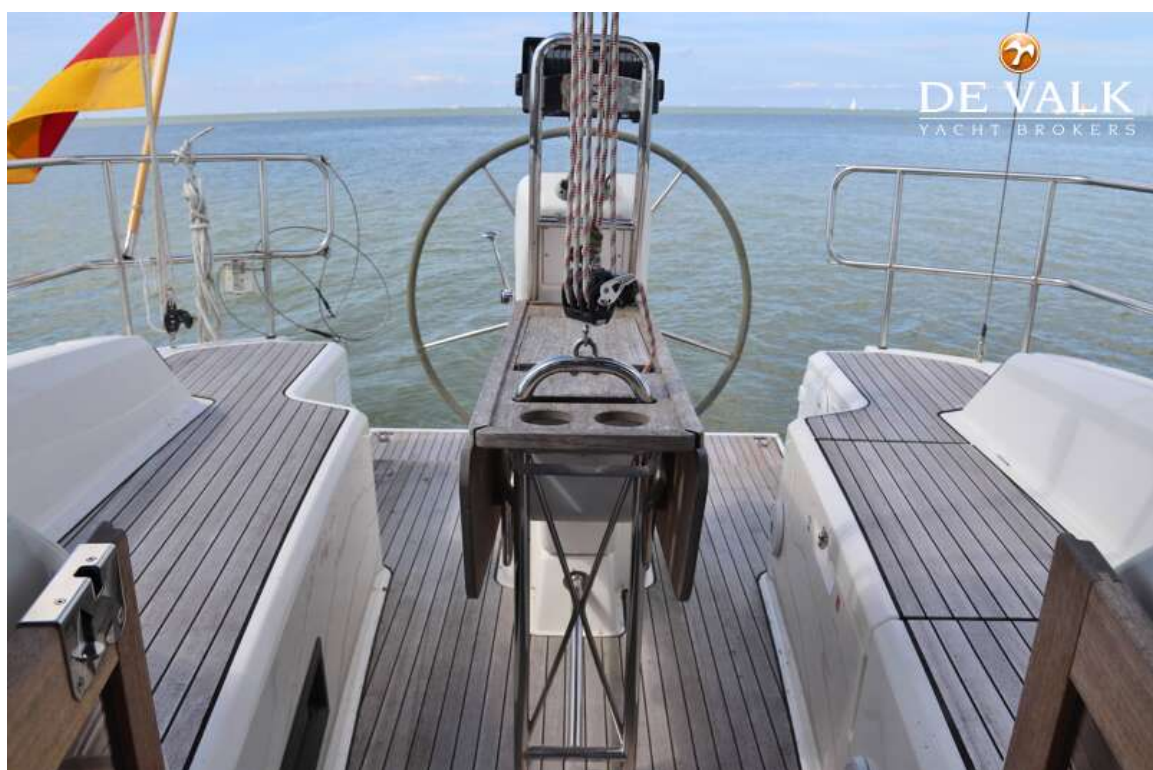
BAVARIA CRUISER 33



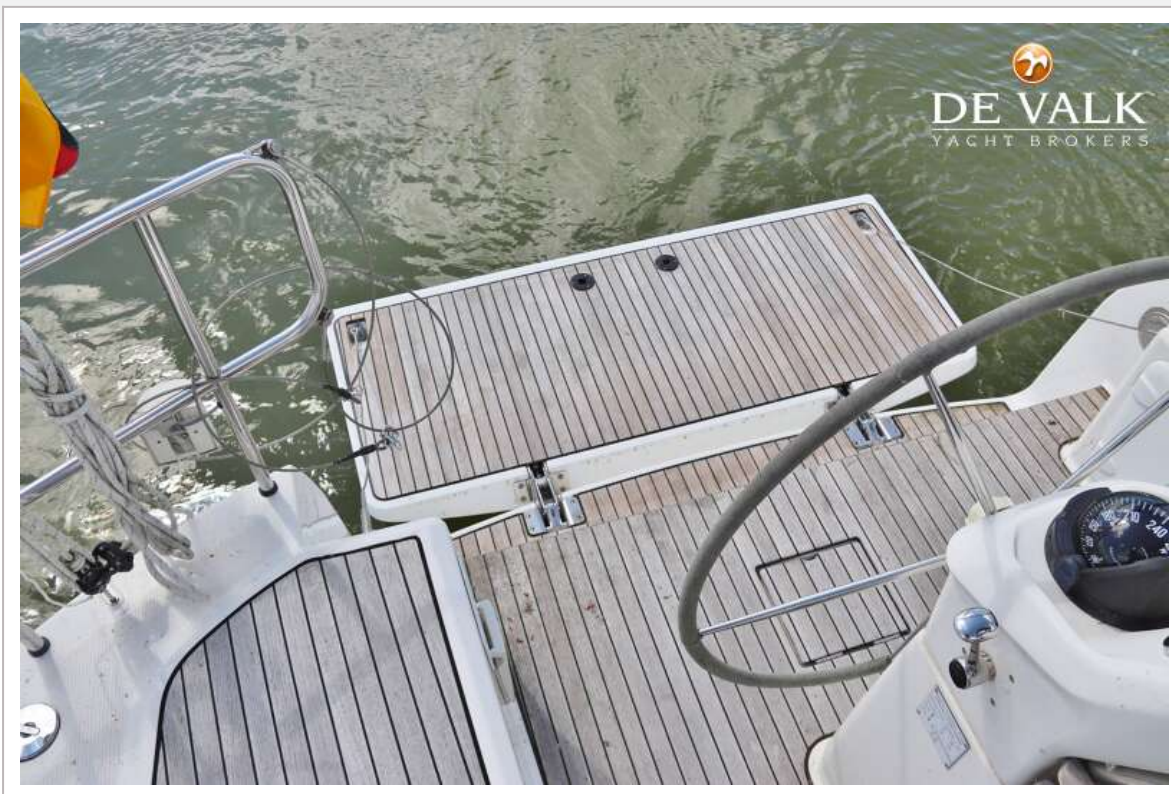
BAVARIA CRUISER 33



BAVARIA CRUISER 33



BAVARIA CRUISER 33



BAVARIA CRUISER 33



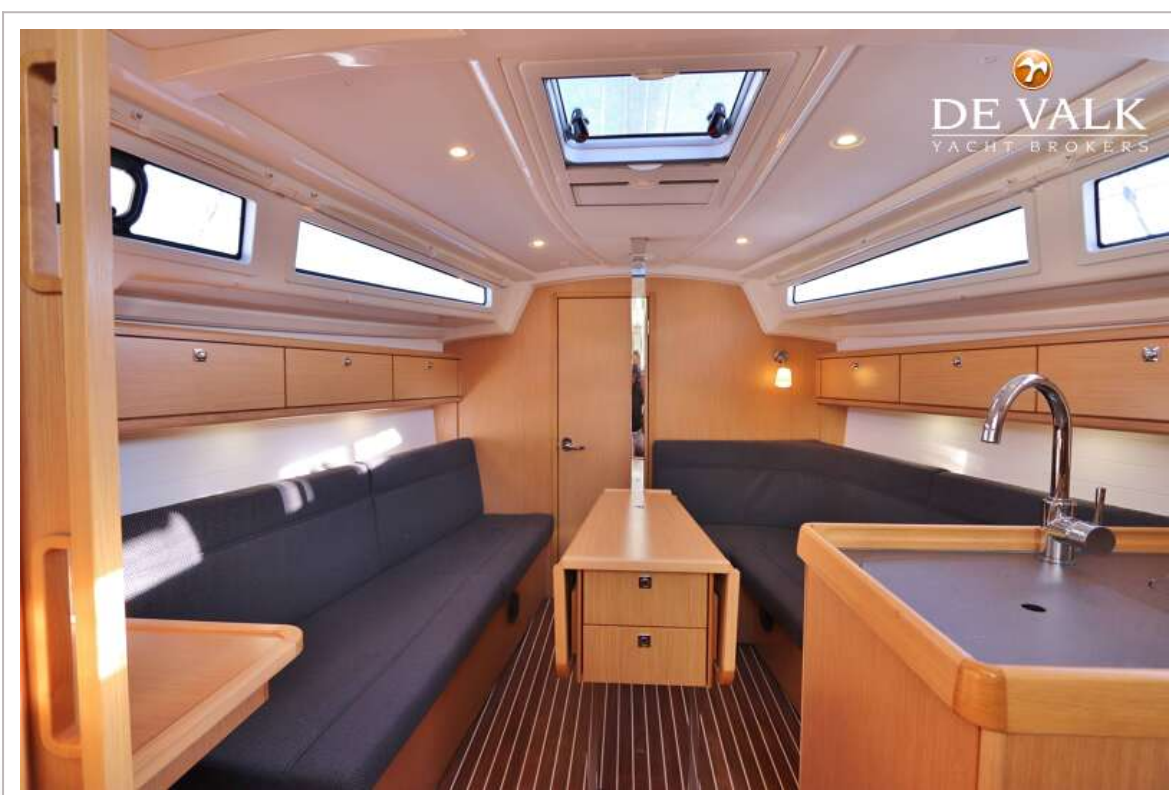
BAVARIA CRUISER 33



BAVARIA CRUISER 33



BAVARIA CRUISER 33



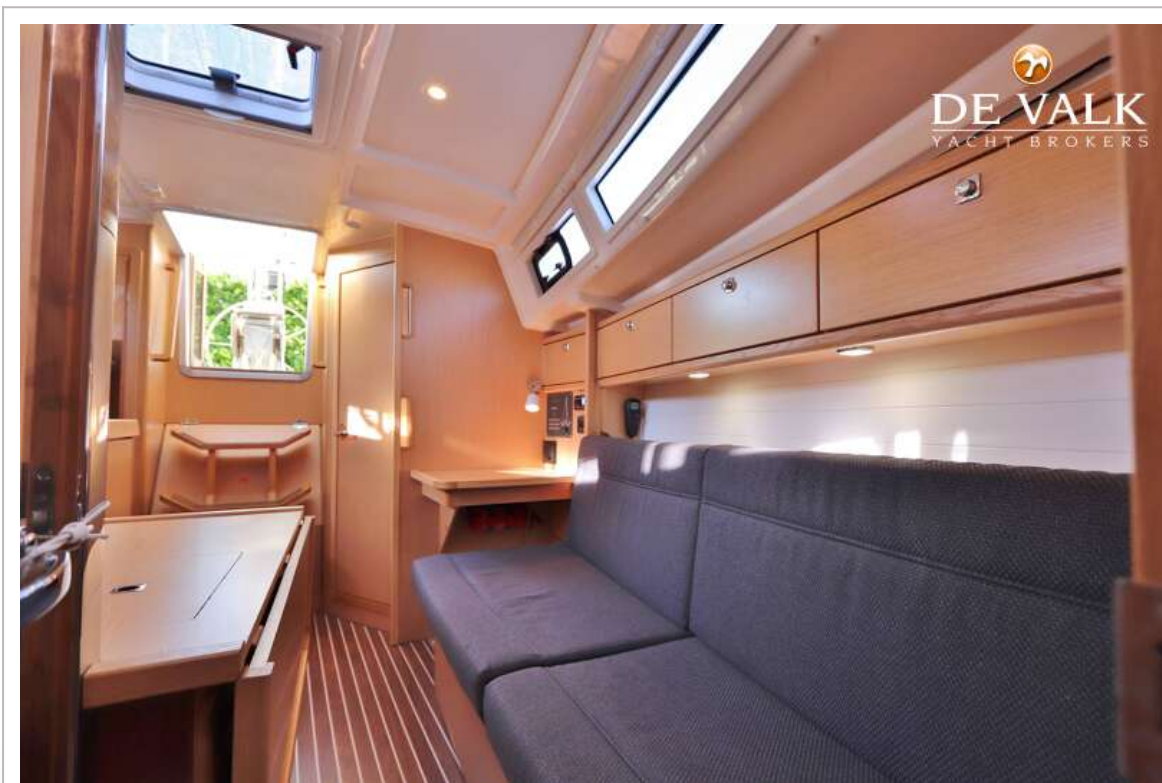
BAVARIA CRUISER 33



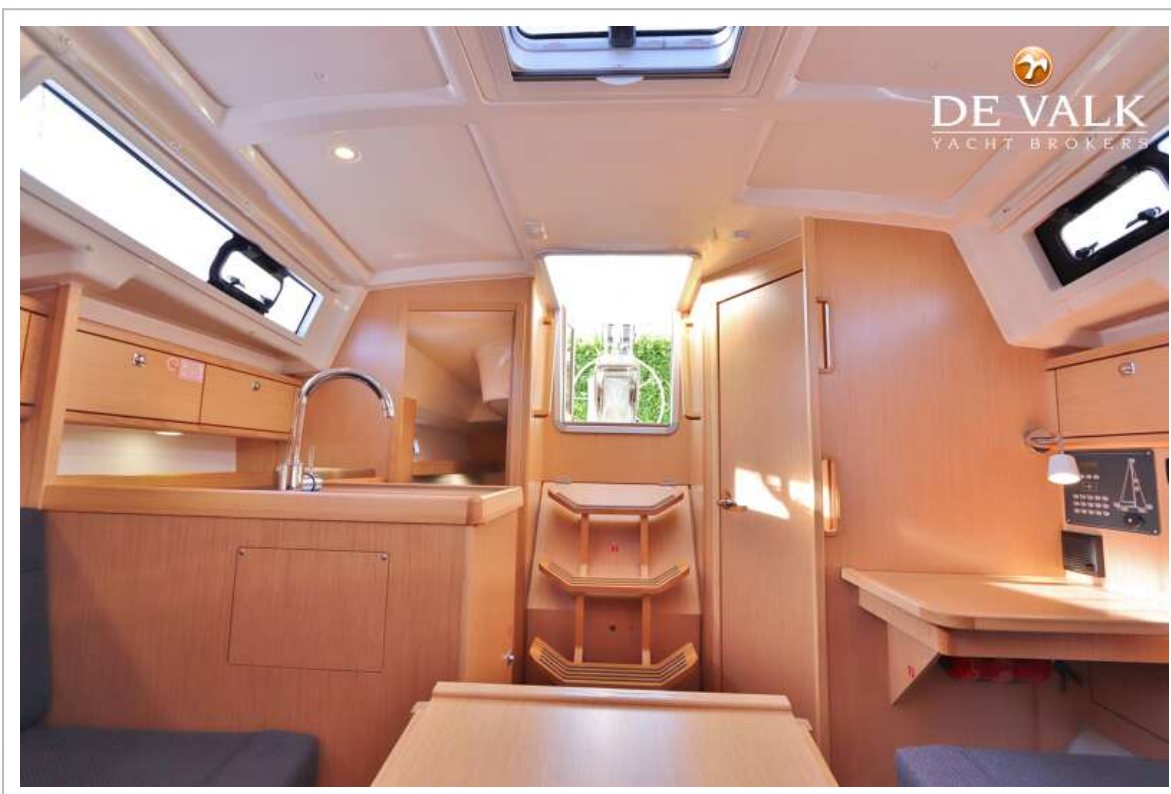
BAVARIA CRUISER 33



BAVARIA CRUISER 33



BAVARIA CRUISER 33



BAVARIA CRUISER 33



BAVARIA CRUISER 33



BAVARIA CRUISER 33



BAVARIA CRUISER 33

