



BAVARIA 46 CRUISER

BAVARIA 46 CRUISER

BROKER'S COMMENTS

This Bavaria 46 Cruiser is designed by J&J. She has an excellent sail performance and handling. Combined with the spacious 3 cabin layout she is the ideal ship for larger families who are looking for space, comfort and stay longer on board 'latitude zero' is very complete with a spacious galley, bowthruster, heating, 2 electric winches and a headroom of 2.10M!

Johan Nooitgedagt

SPECIFICATIONS

Dimensions	13.99 x 4.35 x 1.85 (m)	Builder	Bavaria Yachtbau GmbH
Built	2008	Cabins	3
Material	GRP	Berths	7
Engine(s)	1 x Volvo Penta D2-55 diesel	Hp/Kw	55.00 (hp), 40.42 (kw)
Asking price	sold (VAT)	Lying	at sales office

CONTACT

Sales office	De Valk Hindeloopen B.V.	Telephone	+31 514 52 40 00
Address	Oosterstrand 1 8713 JS Hindeloopen NL	E-mail	hindeloopen@devalk.nl

DISCLAIMER

These particulars are given in good faith as supplied but cannot be guaranteed.



BAVARIA 46 CRUISER

GENERAL

Model	BAVARIA 46 CRUISER
Type	sailing yacht
LOA (m)	13,99
LWL (m)	12,20
Beam (m)	4,35
Draft (m)	1,85
Air draft (m)	20,00
Headroom (m)	2,05
Year built	2008
Builder	Bavaria Yachtbau GmbH
Country	Germany
Designer	J & J Design
Displacement (t)	13
Ballast (tonnes)	cast iron 3.2
CE norm	A
Hull material	GRP
Hull colour	white
Hull shape	round-bilged
Keel type	fin keel
Superstructure material	GRP
Rubbing strake	stainless steel
Deck material	GRP
Deck finish	teak
Cockpit deck finish	teak
Dorades	yes
Window frame	aluminium
Window material	perspex
Deckhatch	yes
Fuel tank (litre)	polyethylene 1x 210
Level indicator (fuel tank)	yes



BAVARIA 46 CRUISER

Level indicator (daytank)	yes
Freshwater tank (litre)	polyethylene 1x 210 1x 250
Level indicator (freshwater)	yes
Blackwater tank (litre)	polyethylene 1x 60 1x 70
Blackwater tank extraction	deck extraction + pump
Wheel steering	cable steering
Emergency tiller	yes

ACCOMMODATION

Cabins	3
Berths	7
Interior	mahogany
Layout	yes
Floor	teak and holly
Open cockpit	yes
Saloon	yes
Headroom saloon (m)	2.00
Heating	diesel ducted hot air Webasto
Chart table	yes
Aft Cabin	yes
Galley	yes
Countertop	corian
Sink	stainless steel
Cooker	calor gas 3 Burner
Oven	yes
Fridge	Waeco
Hot water system	220V + engine
Water pressure system	electrical
Crockery	yes
Owners cabin	v-bed Front
Bed length (m)	2.05



BAVARIA 46 CRUISER

Wardrobe	hanging and shelves
Bathroom	yes

MACHINERY

No of engines	1
Make	Volvo Penta
Type	D2-55
HP	55,00
kW	40,42
Fuel	diesel
Year installed	2008
Maximum speed (kn)	8
Cruising speed (kn)	7
Consumption (l/hr)	3
Engine hours	419
Drive	sail-drive
Bowthruster	electric
Propeller type	folding
Propeller blades	3
Manual bilge pump	yes
Electric bilge pump	yes
Electrical installation	12v
Batteries	1x 110 Ah
Start battery	yes
Service battery	2X 140 Ah
Bowthruster battery	yes
Windlass battery	yes
Battery charger/inverter	Mastervolt 12/2000-100A
Shorepower	with cable

NAVIGATION



BAVARIA 46 CRUISER

Compass	2x plastimo on steering pedestal
Electric compass	Raymarine ST60+
Depth sounder	Raymarine ST60+
Depth sounder/log	Raymarine ST60+
Log	Raymarine ST60+ Tri Data
Windset	2x Raymarine ST60+ Wind
Repeater	Raymarine ST60+
VHF	Raymarine Ray 240E
VHF handheld	yes
Autopilot	Raymarine ST6002
Rudder angle indicator	Raymarine ST6002
Radar	Raymarine 2kw scanner
Plotter/GPS	Raymarine E 80
Radar/GPS/plotter	Raymarine E 80
AIS receiver	yes

EQUIPMENT

Sprayhood	Caribic Beige
Sprayhood with grab rail	yes
Cockpit cover	yes
Cockpit cushions	yes
Cockpit table	yes
Bathing platform	yes
Boarding ladder	stainless steel
Anchor	CQR Plough
Anchor chain	10mm 60m
Windlass	electrical 125 kgf
Sea railing	stainless steel
Grab rail (superstructure)	wood
Railing side opening gates	yes
Pushpit	yes



BAVARIA 46 CRUISER

Pulpit	yes
Radar reflector	yes
Fenders	yes
Mooring lines	yes
TV	Sharp26"
TV receiver	Glomex
Radio-cd player	JVC
Cockpit speakers	yes
Speakers in salon	yes
Clock - barometer	yes
Fire extinguisher	yes

RIGGING

Rigging	sloop
Standing rigging	wire
Brand mast	Seldén
Material mast	aluminium
Spreaders	2 pair
Mainsail	Elvstrom HT with vertical battens
Fully battened mainsail	Vertical
Stoway mast	yes
Genoa	Elvstrom High Tech Genua 145%
Reefing System	main in-mast furling
Backstay adjuster	mechanical
Boomvang	gasspring
Genoa sheetwinches	2x Lewmar ST50 Electric
Halyard winches	yes
Multifunctional winches	2x Lewmar ST40 Manual
Isolated backstay	yes



BAVARIA 46 CRUISER



BAVARIA 46 CRUISER



BAVARIA 46 CRUISER



BAVARIA 46 CRUISER



BAVARIA 46 CRUISER



BAVARIA 46 CRUISER



BAVARIA 46 CRUISER



BAVARIA 46 CRUISER



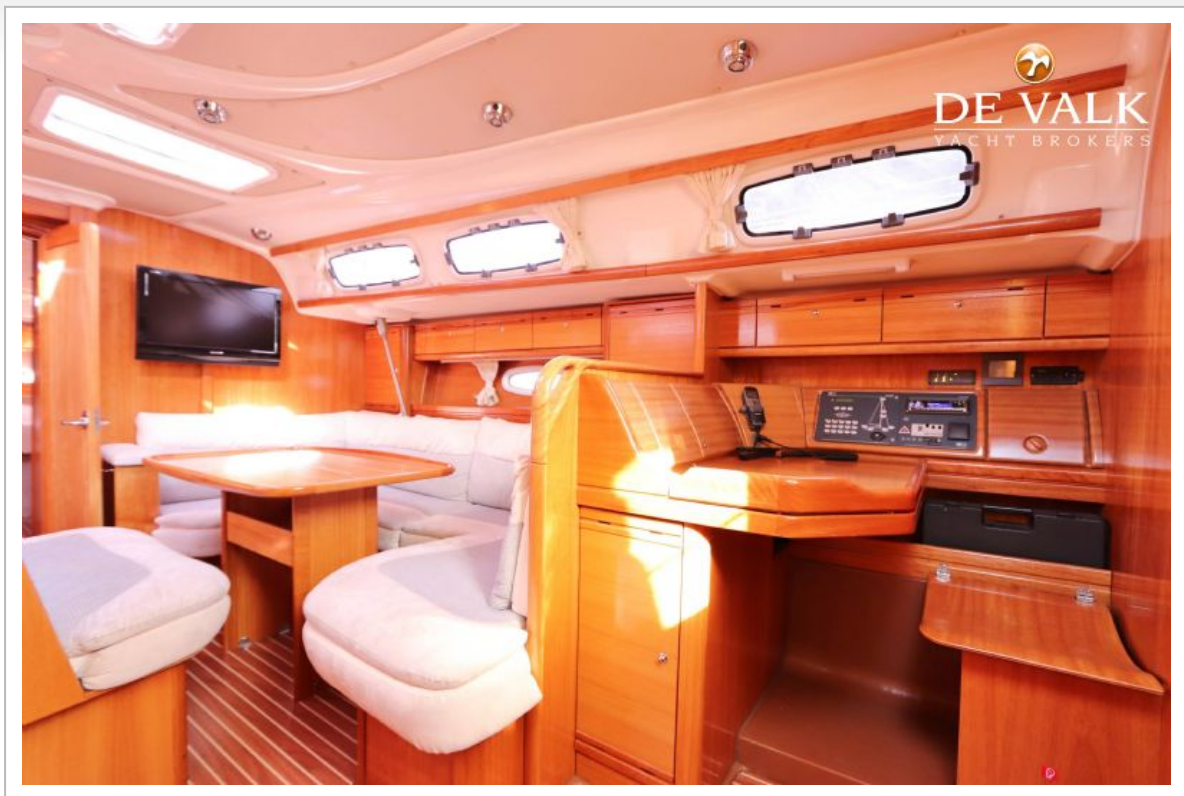
BAVARIA 46 CRUISER



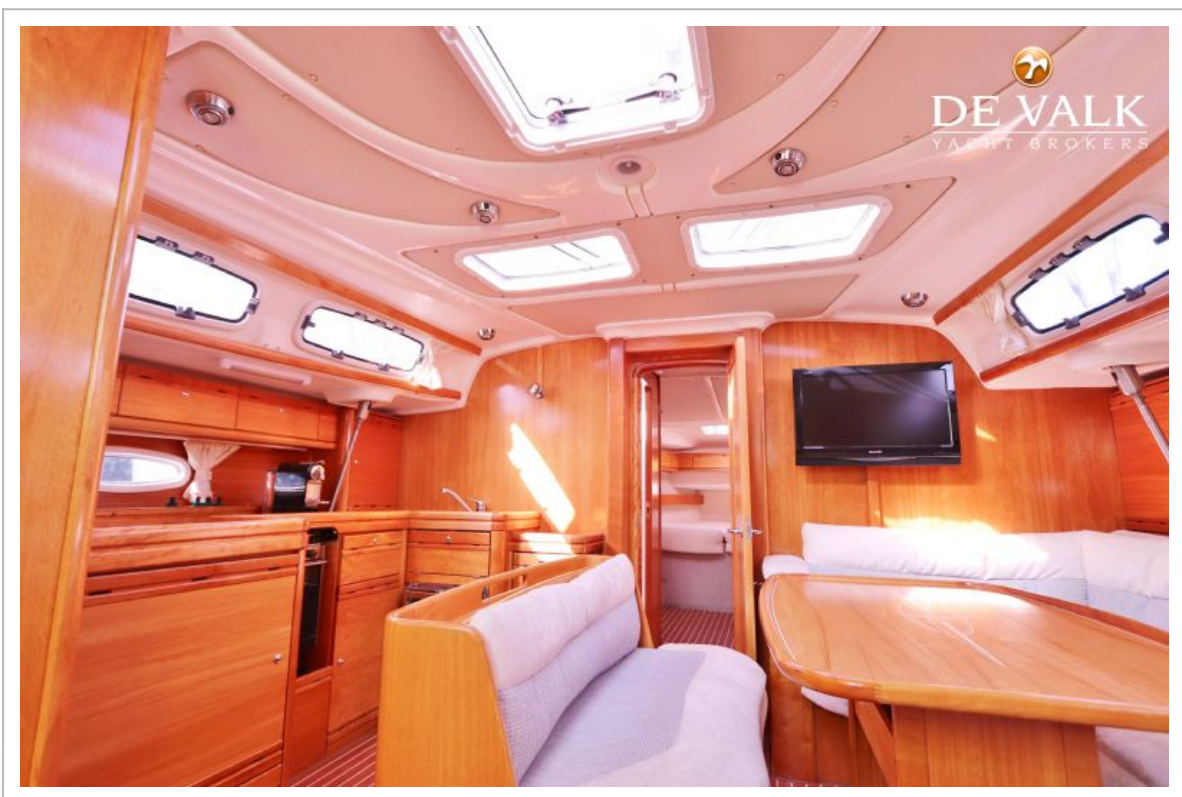
BAVARIA 46 CRUISER



BAVARIA 46 CRUISER



BAVARIA 46 CRUISER



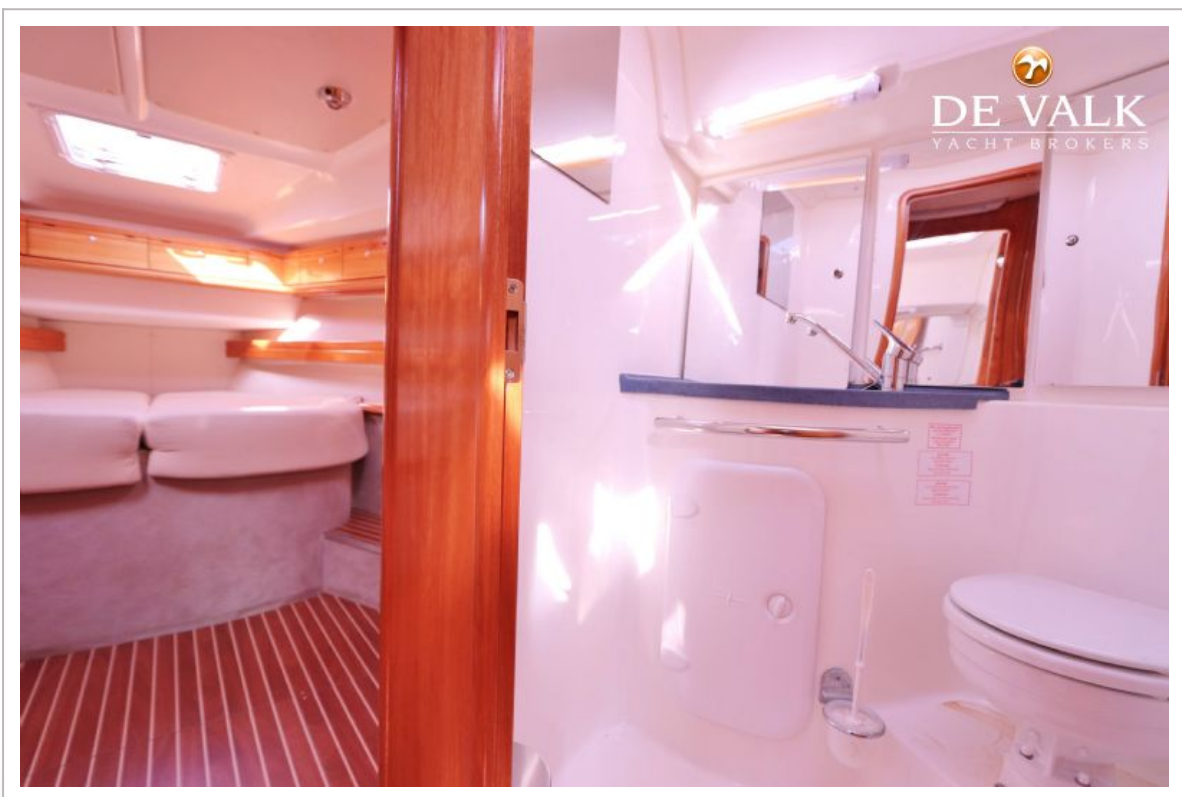
BAVARIA 46 CRUISER



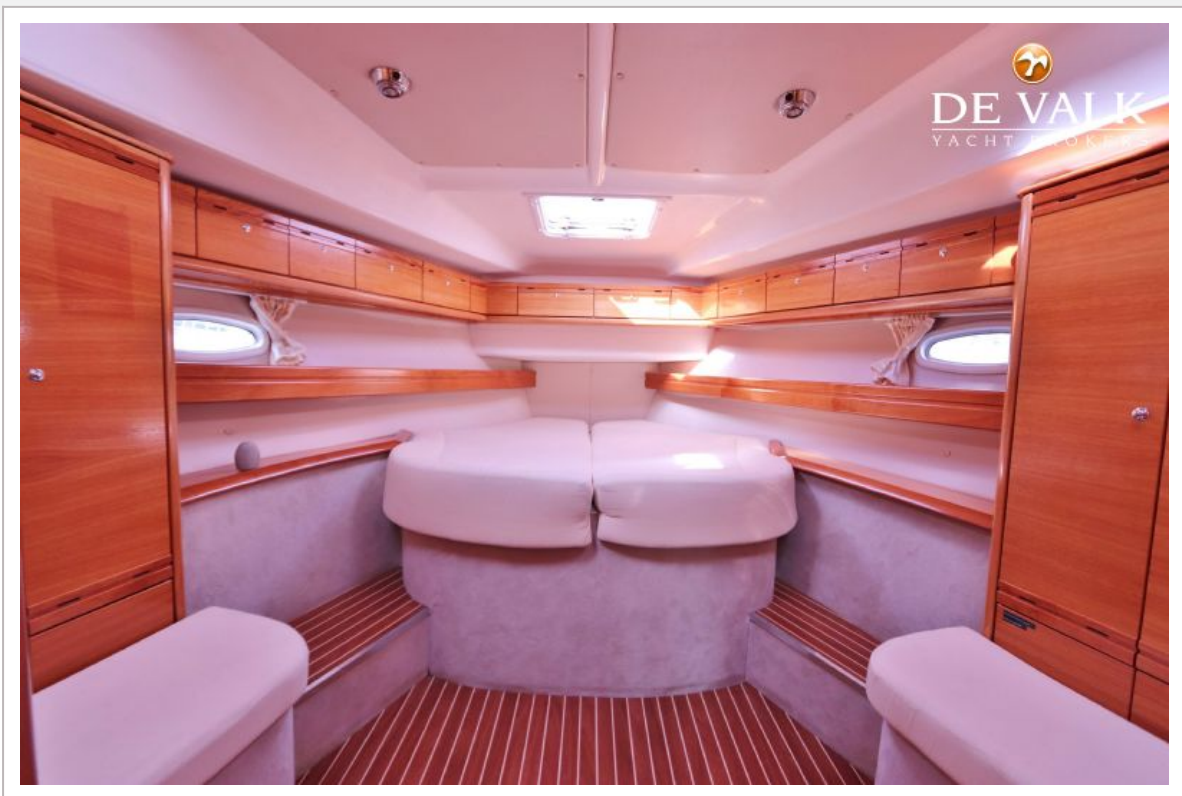
BAVARIA 46 CRUISER



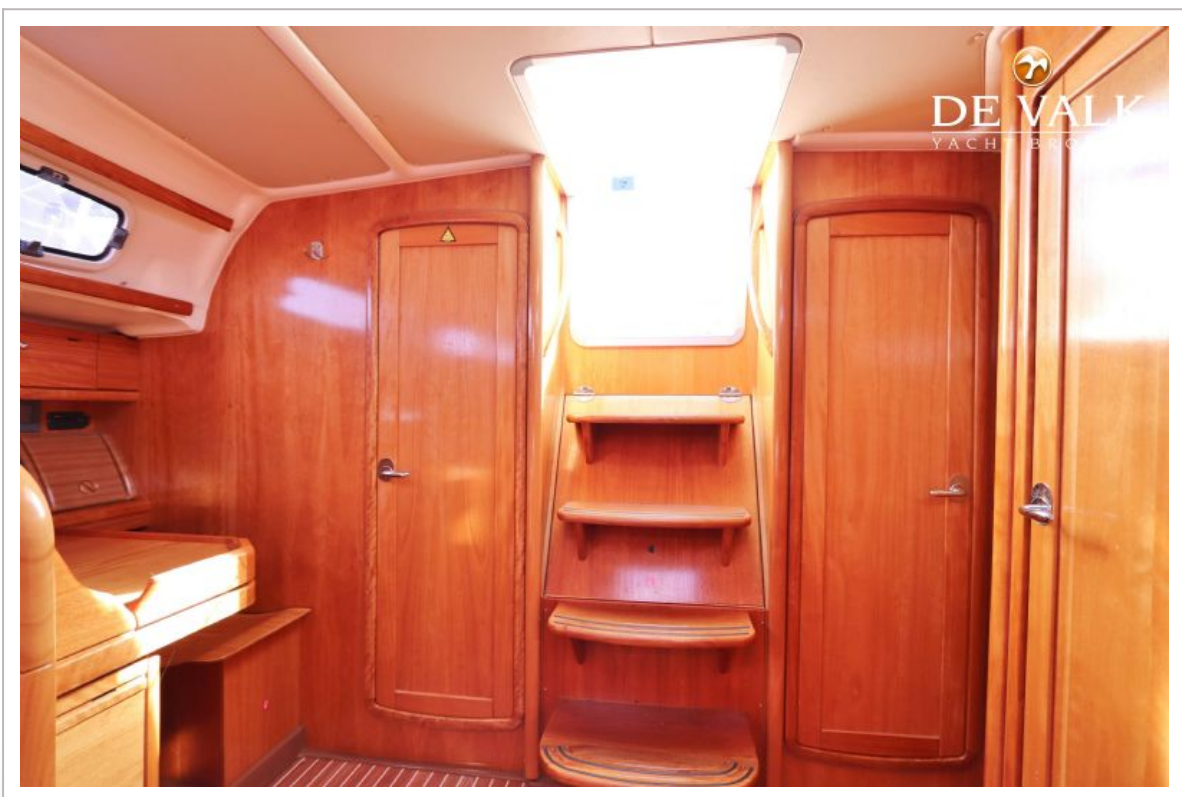
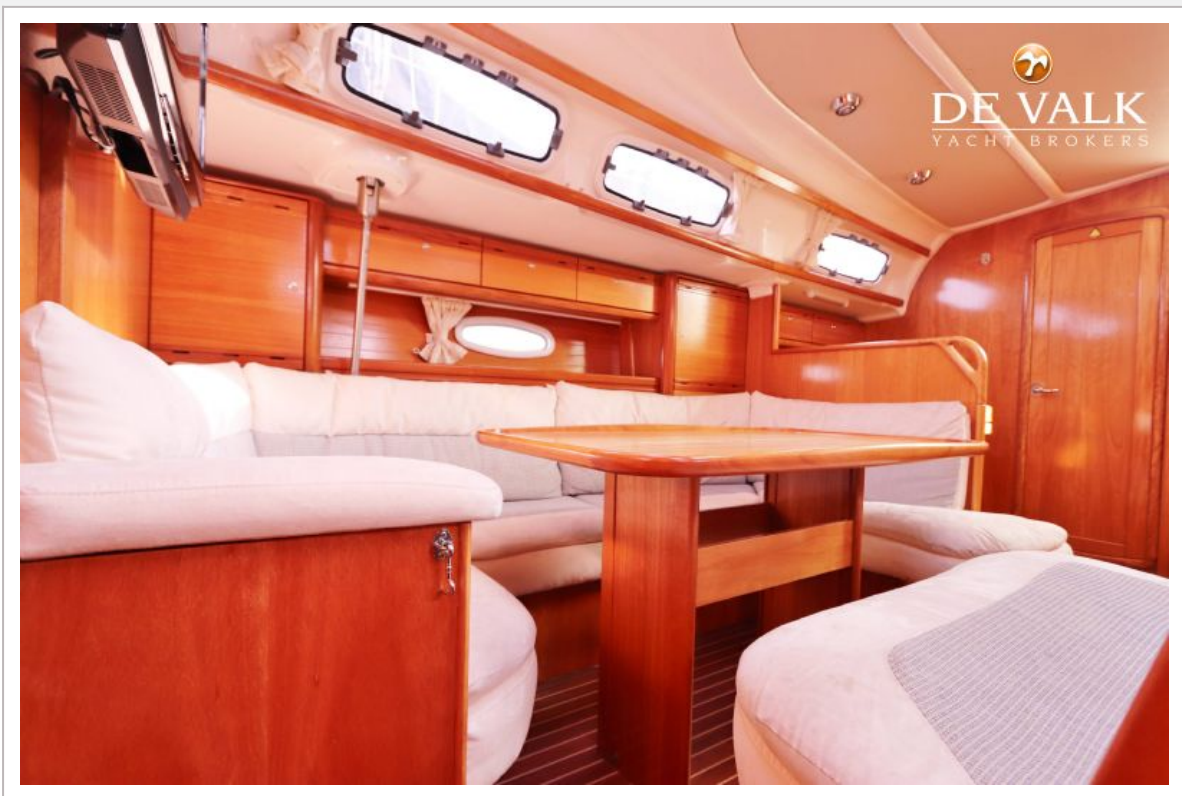
BAVARIA 46 CRUISER



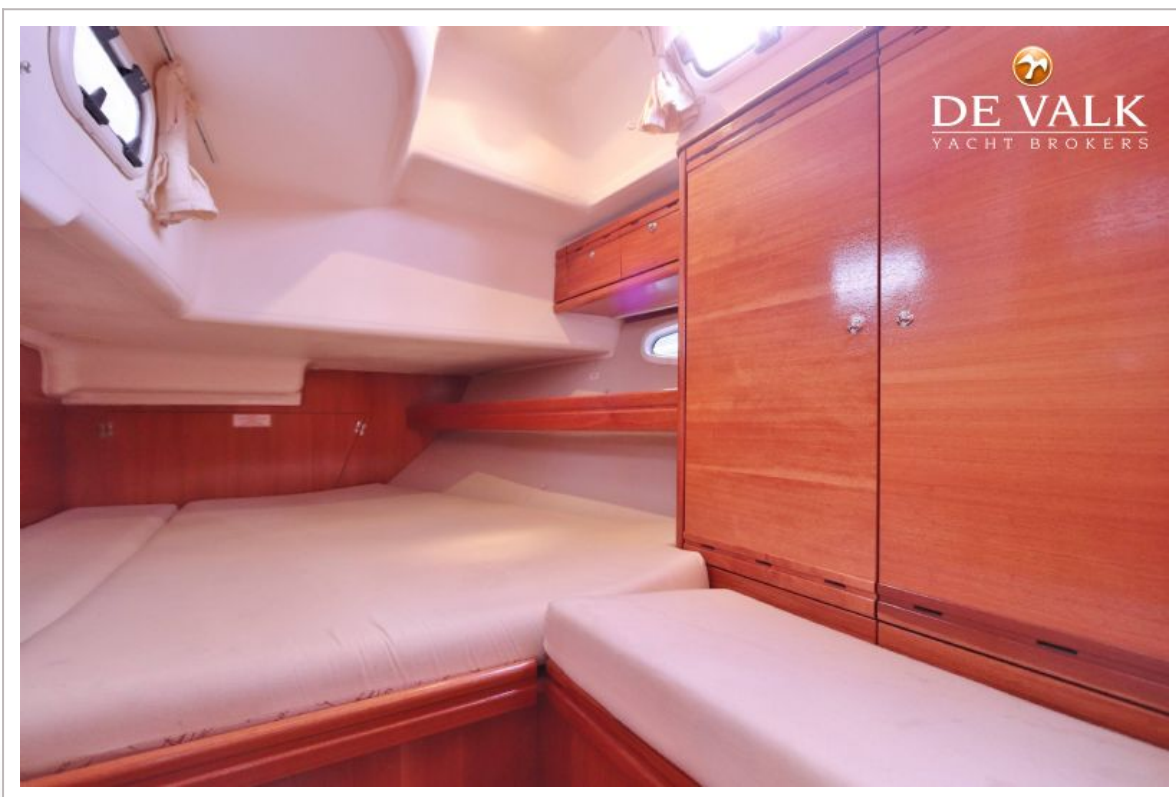
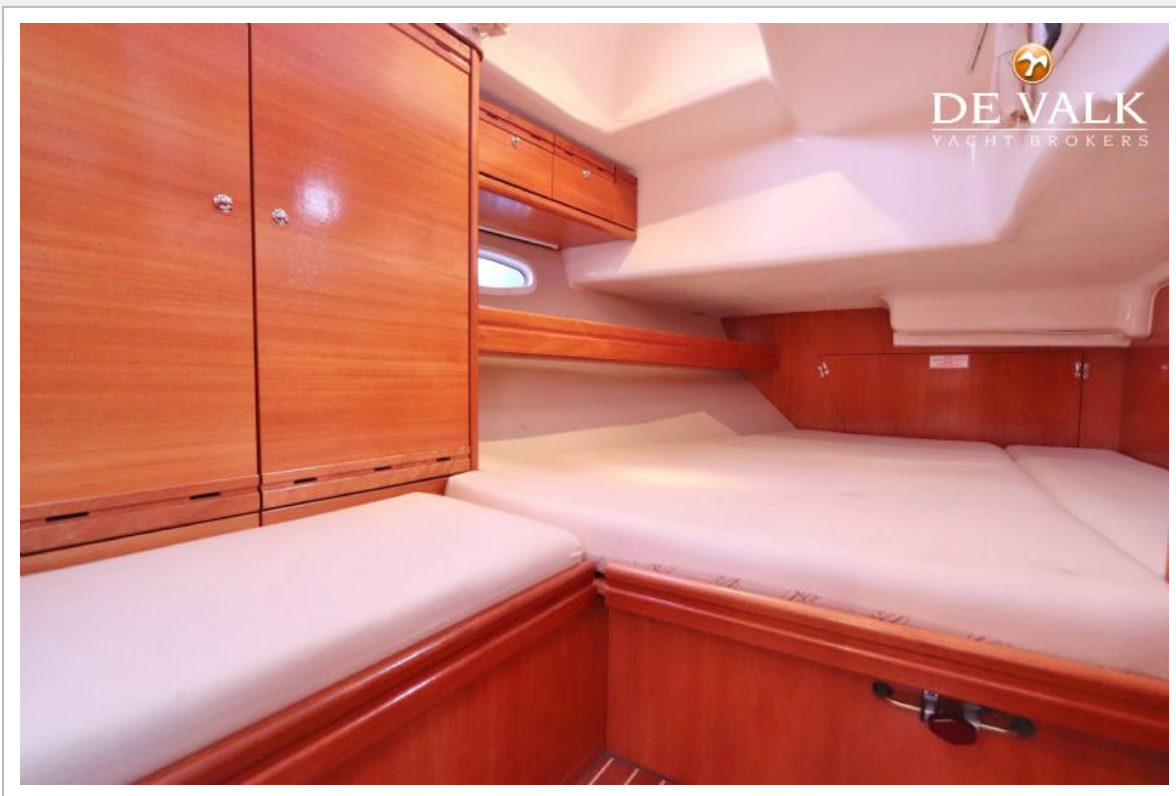
BAVARIA 46 CRUISER



BAVARIA 46 CRUISER



BAVARIA 46 CRUISER



BAVARIA 46 CRUISER

