



DE VALK
YACHT BROKERS



BAVARIA 32 CRUISER



DE VALK
YACHT BROKERS

BAVARIA 32 CRUISER

BROKER'S COMMENTS

The Bavaria 32 Cruiser Avantgarde is easy to operate, safe and seaworthy yacht with good accommodation; privacy in two separate cabins. The depth of 1.95 m makes her the ideal boat for demanding sailors who also like sailing on the bigger lakes. In short, the Bavaria 32 Cruiser is a nice and safe family boat. All on board are well utilized and there is an abundance of storage space. Both below and above deck. Only used privately

Johan Nooitgedagt

SPECIFICATIONS

Dimensions	9.99 x 3.42 x 1.95 (m)	Builder	Bavaria Giebelstadt
Built	2012	Cabins	2
Material	GRP	Berths	5
Engine(s)	1 x Volvo Penta D1-20 diesel	Hp/Kw	18.91 (hp), 13.90 (kw)
Asking price	sold (VAT)	Lying	contact Hindeloopen

CONTACT

Sales office	De Valk Hindeloopen B.V.	Telephone	+31 514 52 40 00
Address	Oosterstrand 1 8713 JS Hindeloopen NL	E-mail	hindeloopen@devalk.nl

DISCLAIMER

These particulars are given in good faith as supplied but cannot be guaranteed.



BAVARIA 32 CRUISER

GENERAL

Model	BAVARIA 32 CRUISER
Type	sailing yacht
LOA (m)	9,99
LWL (m)	8,85
Beam (m)	3,42
Draft (m)	1,95
Air draft (m)	17,00
Headroom (m)	2,00
Year built	2012
Builder	Bavaria Giebelstadt
Country	Germany
Displacement (t)	6,3
Ballast (tonnes)	cast iron 1,3
CE norm	A
Hull material	GRP
Hull colour	grey
Hull shape	round-bilged
Keel type	fin keel
Superstructure material	GRP
Rubbing strake	aluminum
Deck material	GRP
Deck finish	non-skid moulded in
Superstructure deck finish	non-skid moulded in
Cockpit deck finish	teak
Antifouling (year)	2018
Dorades	yes
Window material	perspex
Deckhatch	yes
Fuel tank (litre)	polyethylene 150
Level indicator (fuel tank)	yes



BAVARIA 32 CRUISER

Freshwater tank (litre)	polyethylene 150
Greywater tank (litre)	polyethylene 70
Wheel steering	cable steering Lewmar folding wheel
Tiller	yes
Emergency tiller	yes

ACCOMMODATION

Cabins	2
Berths	5
Interior	mahogany
Floor	teak and holly
Open cockpit	yes
Headroom saloon (m)	1,90
Heating	diesel ducted hot air Webasto EVO 3900
Chart table	yes
Aft Cabin	yes
Galley	yes
Countertop	corian
Sink	stainless steel
Cooker	calor gas 2 Burner
Oven	yes
Fridge	yes
Hot water system	220V + engine
Water pressure system	electrical
Owners cabin	v-bed Front
Bed length (m)	1,95
Wardrobe	hanging and shelves
Bathroom	shared
Toilet	
Toilet system	manual
Wash basin	



BAVARIA 32 CRUISER

Shower	
Guest cabin 1	double bed Rear
Bed length (m)	1,95
Wardrobe	hanging and shelves

MACHINERY

No of engines	1
Make	Volvo Penta
Type	D1-20
HP	18,91
kW	13,90
Fuel	diesel
Year installed	2012
Maximum speed (kn)	7
Cruising speed (kn)	6
Consumption (l/hr)	3
Engine hours	138
Engine cooling system	freshwater heat exchanger
Drive	sail-drive
Engine controls	bowden cable
Gearbox	mechanical
Exhaust	watercooled
Propeller type	fixed
Propeller blades	2
Manual bilge pump	yes
Electric bilge pump	yes
Electrical installation	12 Volt
Service battery	1x 145 Ah
Diode battery combiners	Quick charge seperator
Shorepower	with cable



BAVARIA 32 CRUISER

NAVIGATION

Compass	Plastimo
Electric compass	Garmin GMI 10
Depth sounder	Garmin GMI 10
Depth sounder/log	Garmin GMI 10
Log	Garmin GMI 10
VHF	Raymarine Ray 55E
Plotter/GPS	Garmin GPSmap 4008
Weather receiver	Huger
Navigation lights	yes

EQUIPMENT

Sprayhood with grab rail	yes
Cockpit cover	yes
Cockpit table	yes
Bathing platform	yes
Boarding ladder	stainless steel
Deck shower	Warm & cold
Anchor	CQR Plough
Anchor chain	yes
Windlass	electrical Quick
Sea railing	wire
Grab rail (superstructure)	stainless steel
Railing side opening gates	yes
Pushpit	yes
Pulpit	yes
Fenders	yes
Mooring lines	yes
Radio-cd player	JVC
Cockpit speakers	yes
Clock - barometer	yes



BAVARIA 32 CRUISER

Fire extinguisher

3x

RIGGING

Rigging

sloop

Standing rigging

wire

Brand mast

Seldén

Material mast

aluminium

Spreaders

yes

Mainsail

Elvstrom

Stoway mast

yes

Genoa I

Elvstrom

Genoa furler

yes

Genoa cover

yes

Reefing System

main in-mast furling

Backstay adjuster

tackle

Boomvang

gasspring

Genoa sheetwinches

2x Harken ST30

Multifunctional winches

halyard/sheet winches 2x Harken ST15

Isolated backstay

yes



BAVARIA 32 CRUISER



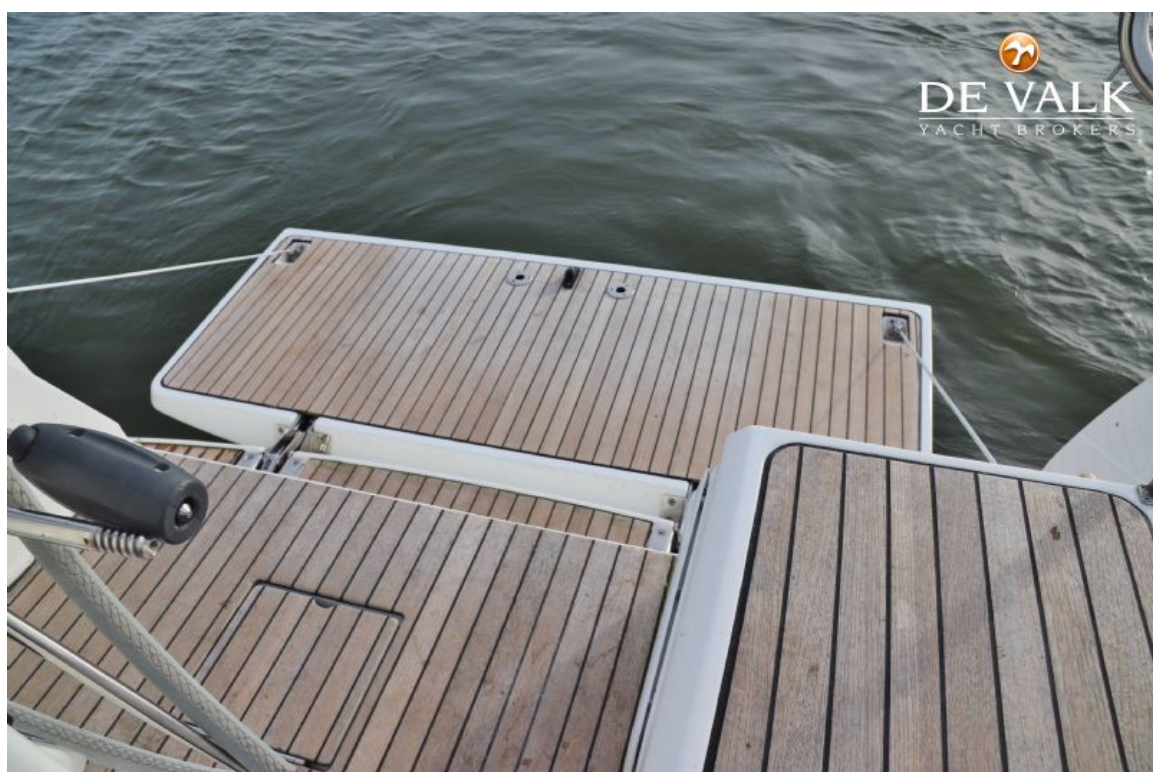
BAVARIA 32 CRUISER



BAVARIA 32 CRUISER



BAVARIA 32 CRUISER



BAVARIA 32 CRUISER



BAVARIA 32 CRUISER



BAVARIA 32 CRUISER



BAVARIA 32 CRUISER



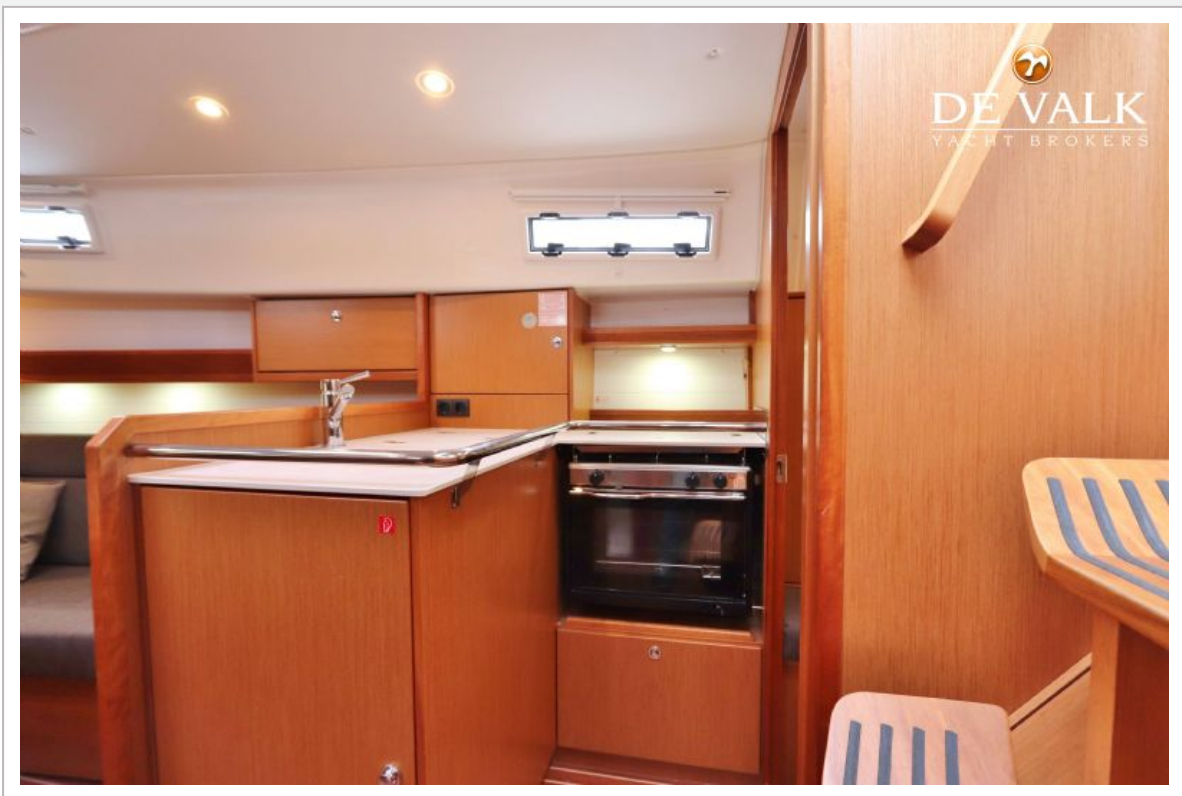
BAVARIA 32 CRUISER



BAVARIA 32 CRUISER



BAVARIA 32 CRUISER



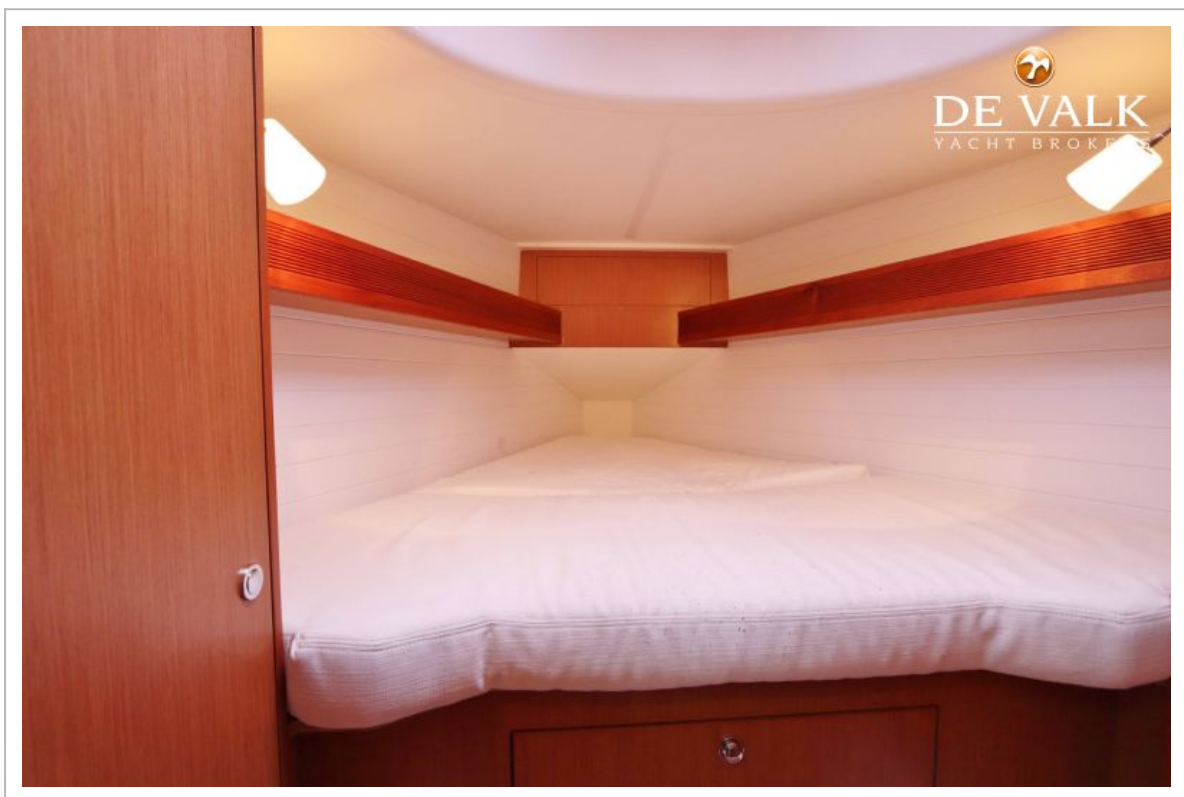
BAVARIA 32 CRUISER



BAVARIA 32 CRUISER



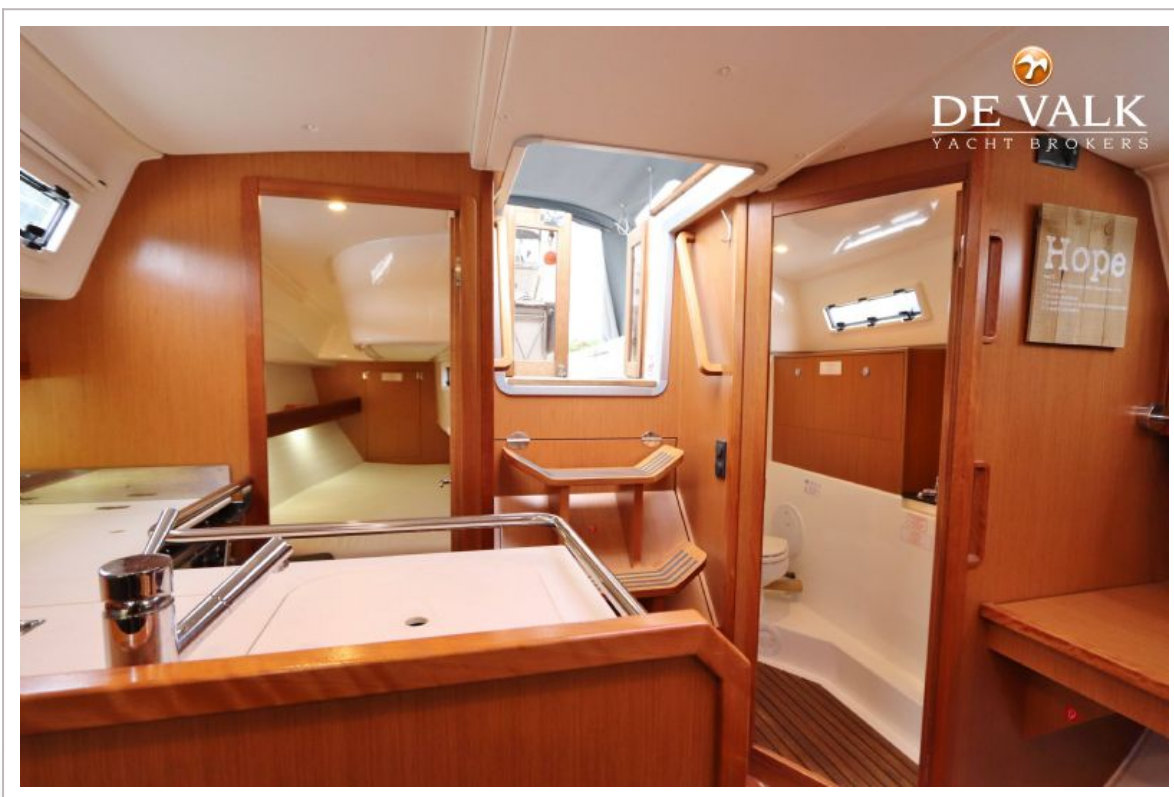
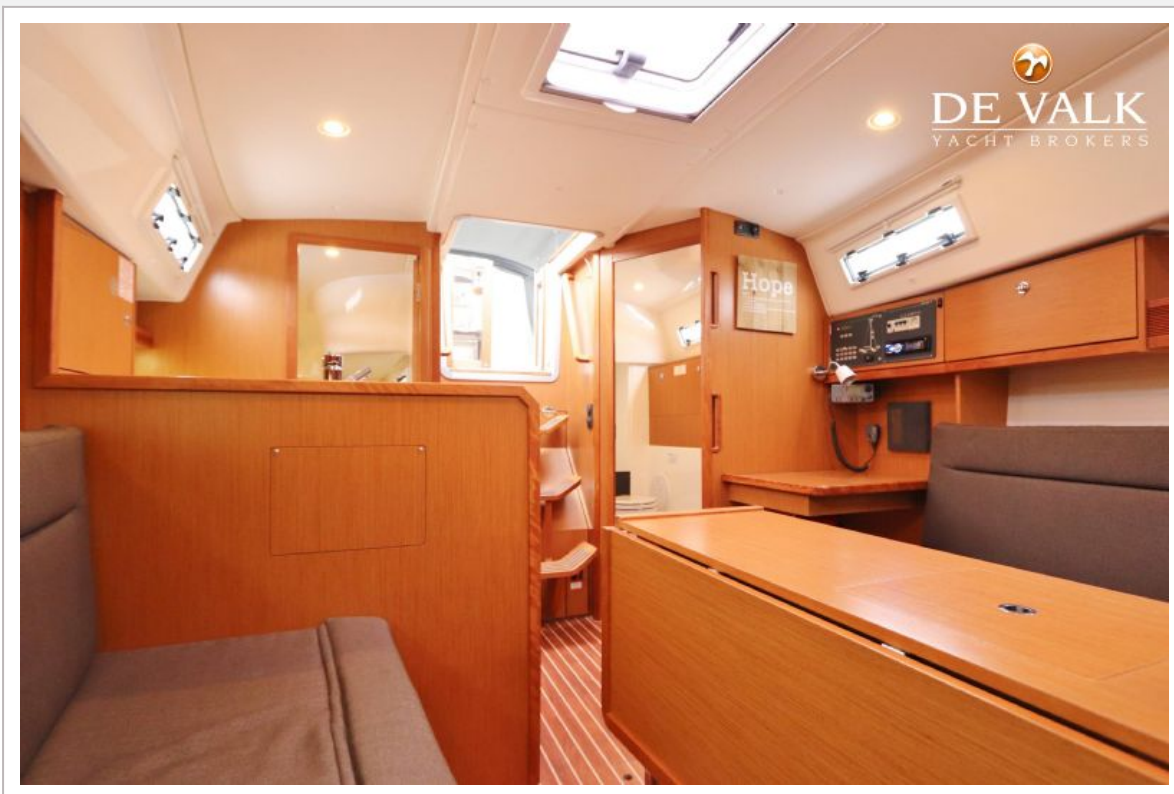
BAVARIA 32 CRUISER



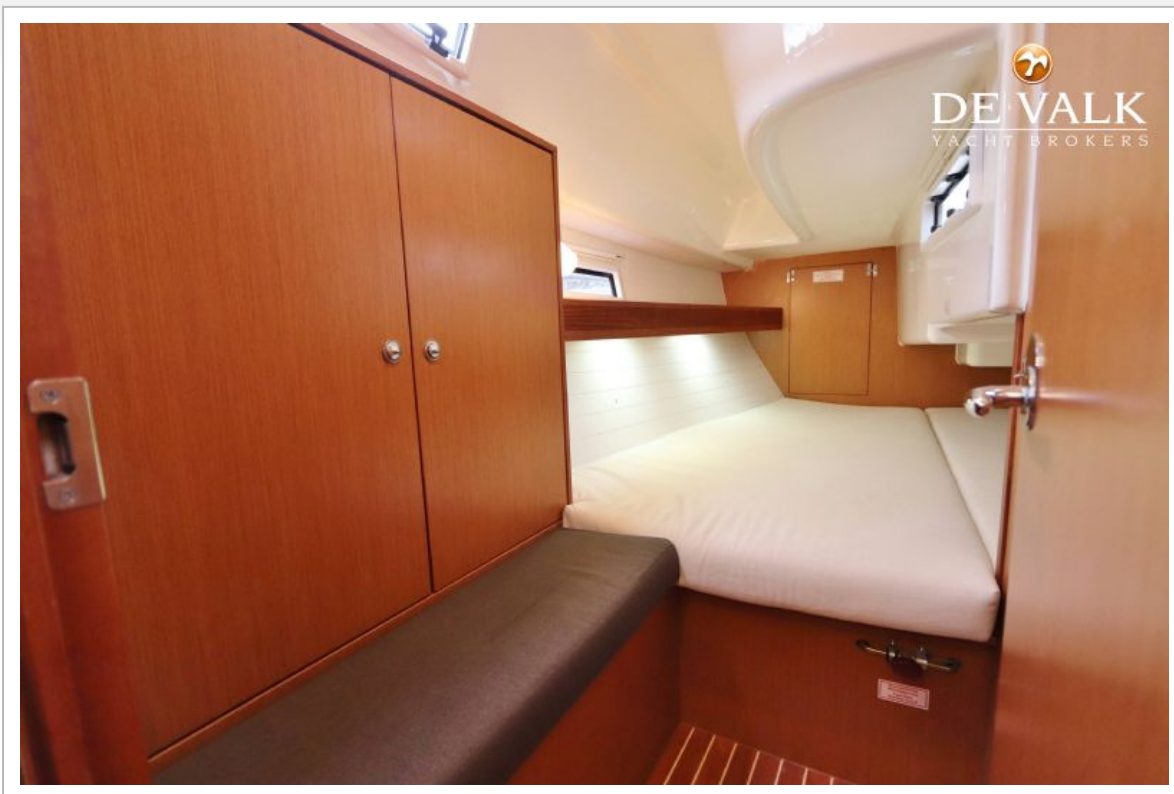
BAVARIA 32 CRUISER



BAVARIA 32 CRUISER



BAVARIA 32 CRUISER



BAVARIA 32 CRUISER



BAVARIA 32 CRUISER

