



DE VALK
YACHT BROKERS



PRINCESS V52



DE VALK
YACHT BROKERS

BROKERAGE | CHARTER | BERTHS | FINANCE | INSURANCE | YACHT MANAGEMENT

PRINCESS V52

BROKER'S COMMENTS

This well maintained Princess V52 is ready for a new owner, in very keen condition. She offers cruising in comfort and style up till a maximum of 30 knots. Equipped with twin 610 hp diesel Volvo engines. This yacht has only been used on fresh water.

Tjerk Bouma

SPECIFICATIONS

Dimensions	16.40 x 4.22 x 1.09 (m)	Builder	Princess Yachts Ltd
Built	1997	Cabins	3
Material	GRP	Berths	6
Engine(s)	2 x Volvo Penta E122 diesel	Hp/Kw	2 x 610.00 (hp), 448.35 (kw)
Asking price	sold (VAT)	Lying	elsewhere / Not at sales office

CONTACT

Sales office	De Valk Hindeloopen B.V.	Telephone	+31 514 52 40 00
Address	Oosterstrand 1 8713 JS Hindeloopen NL	E-mail	hindeloopen@devalk.nl

DISCLAIMER

These particulars are given in good faith as supplied but cannot be guaranteed.



GENERAL

Model	PRINCESS V52
Type	motor yacht
LOA (m)	16,40
LWL (m)	15,97
Beam (m)	4,22
Draft (m)	1,09
Air draft (m)	3,38
Headroom (m)	2,00
Year built	1997
Builder	Princess Yachts Ltd
Country	Great Britain
Designer	Princess Yachts Ltd
Displacement (t)	14,3
CE norm	NA
Hull material	GRP
Hull colour	white With dark blue
Hull shape	deep-V
Superstructure material	GRP
Rubbing strake	rubber
Deck material	GRP
Deck finish	non-skid moulded in
Superstructure deck finish	non-skid moulded in
Cockpit deck finish	teak
Window frame	aluminium
Deckhatch	2x
Portholes	12x
Radar arch	
Fuel tank (litre)	Approx 2000 Ltr.
Freshwater tank (litre)	Approx 1200 Ltr.
Wheel steering	hydraulic



More info on hull

Extra info

Superstructure and hull recently polished

Every year winterized and stored in a indoor storage

ACCOMMODATION

Cabins

3

Berths

6

Interior

Light modern interior

Floor

carpet

Open cockpit

yes

Saloon

yes

Headroom saloon (m)

> 2 mtr.

Heating

diesel ducted hot air Webasto?

Air-conditioning

reverse cycle airco Yes, SMX II

Chart table

yes

Aft Cabin

2x

Galley

yes

Countertop

corian

Sink

Cooker

electric Neff; two burner

Microwave

Panasonic

Fridge

One fridge in galley One fridge in opencockpit

Hot water system

Water pressure system

electrical

Ice maker

In open cockpit, Icer-Ette

Owners cabin

French bed Forward cabin

Bed length (m)

2

Wardrobe

hanging/drawers/shelves

Bathroom

en suite

Toilet

Toilet system

chemical

Wash basin



Shower	
Guest cabin 1	twin single
Bed length (m)	2
Wardrobe	hanging and shelves
Guest cabin 2	twin single
Bed length (m)	2
Wardrobe	hanging and shelves
Bathroom	shared
Toilet	
Toilet system	electric
Wash basin	
Shower	

MACHINERY

No of engines	2
Make	Volvo Penta
Type	E122
HP	610,00
kW	448,35
Fuel	diesel
Year installed	1996
Maximum speed (kn)	30
Cruising speed (kn)	22
Engine hours	1050
Engine cooling system	freshwater heat exchanger
Drive	shaft
Shaft seal	2017
Engine controls	electrical
Gearbox	hydraulic
Bowthruster	electric
Exhaust	watercooled



Propeller type	fixed
Manual bilge pump	yes
Electric bilge pump	yes
Electrical installation	12 / 220 V
Generator	Westerbeke
Batteries	yes
Service battery	2018: 4x 105 Amp (gel)
Battery monitor	Victron; read out by app on mobile phone
Battery charger	yes
Inverter	yes
Shorepower	with cable
Extra info	2017: Service generator; impellor, liquids + oil, new insulation
Extra info	2017: Service engine; new impellers, new oil and all filters.
Extra info	2017: New injectors and valves set.

NAVIGATION

Compass	Plastimo
Depth sounder	Raymarine Autohelm
Log	Raymarine Autohelm
Autopilot	Raymarine Autohelm ST6000

EQUIPMENT

Fixed windscreen	yes
Sprayhood	Dark blue
Cockpit cover	Dark blue
Bimini	Dark blue
Cockpit cushions	yes
Cockpit table	yes
Cockpit chairs	yes
Bathing platform	With teak
Boarding ladder	stainless steel



Gangway	With teak
Anchor	
Anchor chain	yes
Windlass	electrical
Dinghy	inflatable Zodiac
Outboard	Yamaha 2 stroke
Sea railing	stainless steel
Grab rail (superstructure)	stainless steel
Wiper	2x
Horn	electric
Fenders	yes
Mooring lines	yes
TV	SchaubLorenz
Radio-cd player	Sony CDX-71 10 CD changer
Cockpit speakers	yes



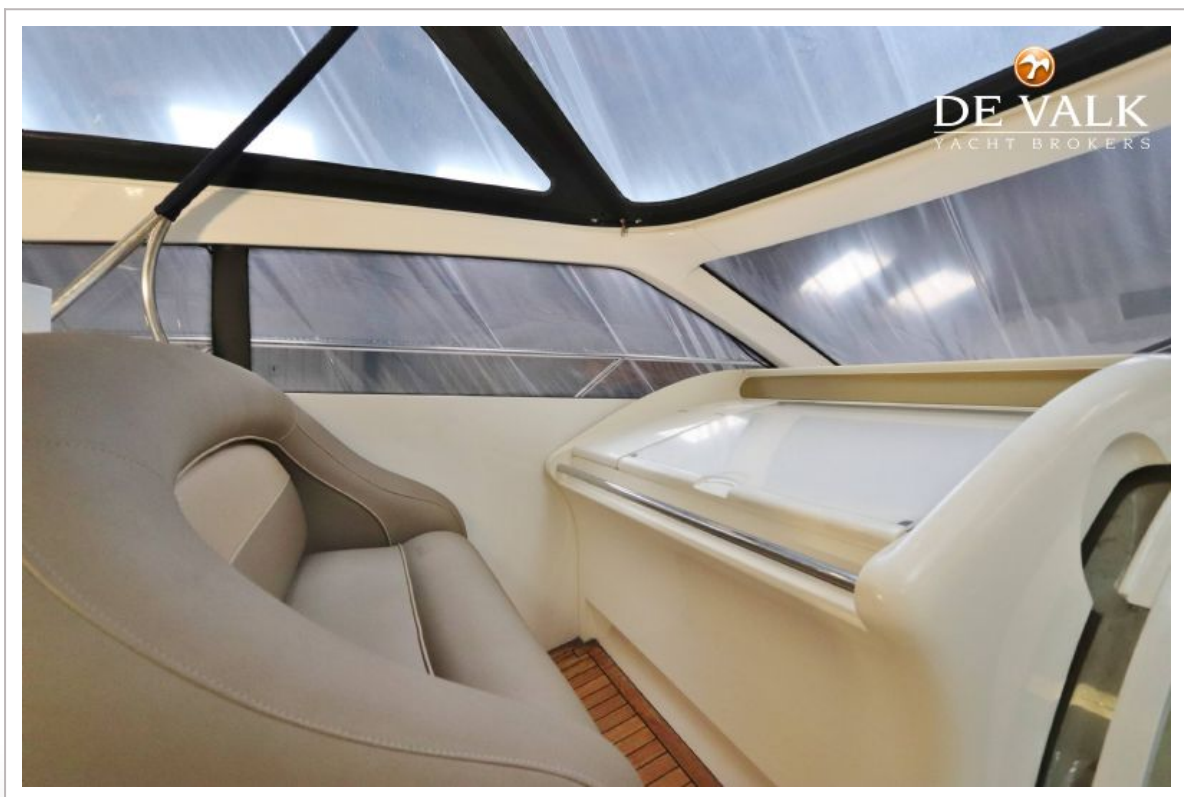
PRINCESS V52



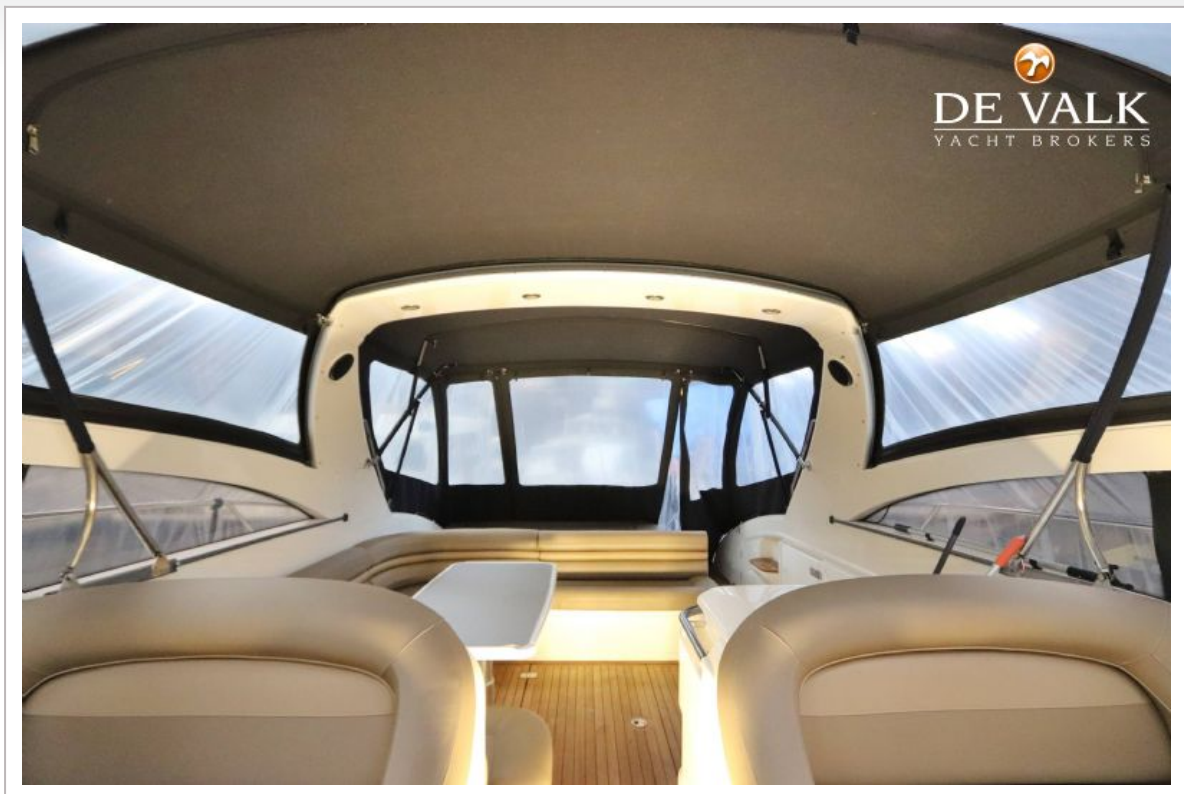
PRINCESS V52



PRINCESS V52



PRINCESS V52



PRINCESS V52



PRINCESS V52



PRINCESS V52



PRINCESS V52



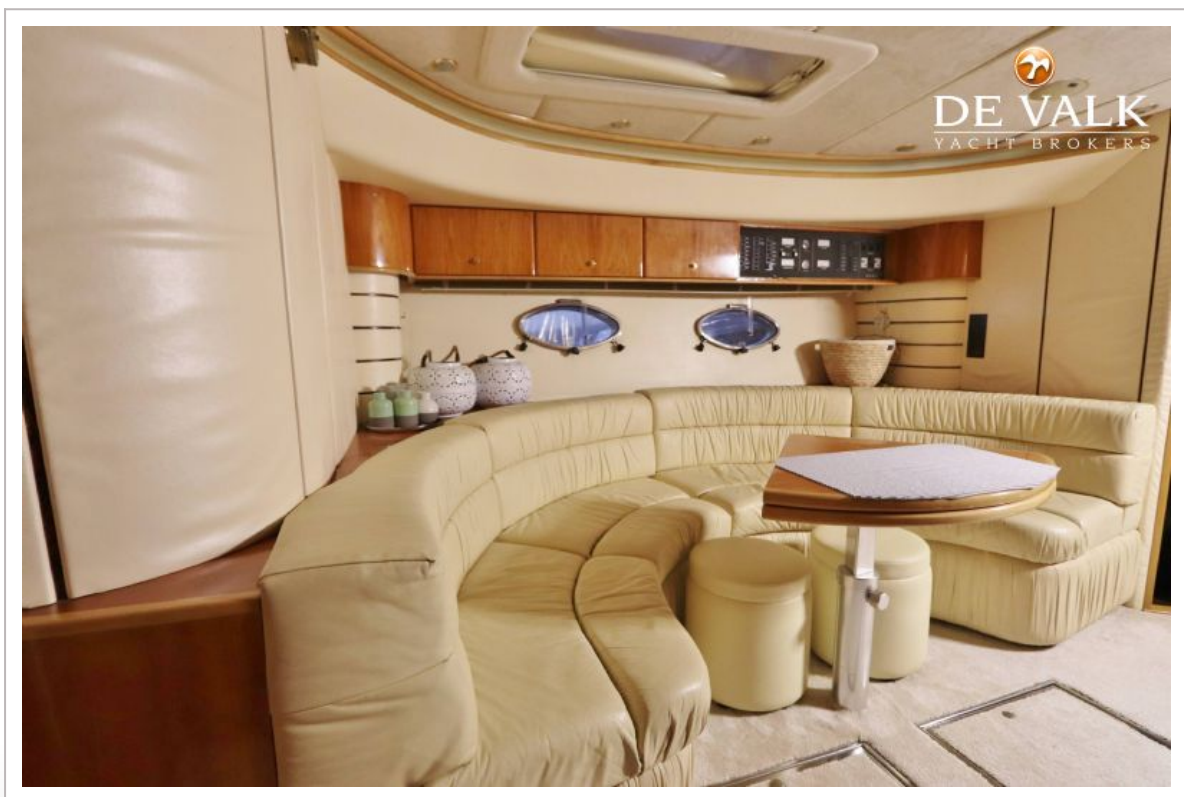
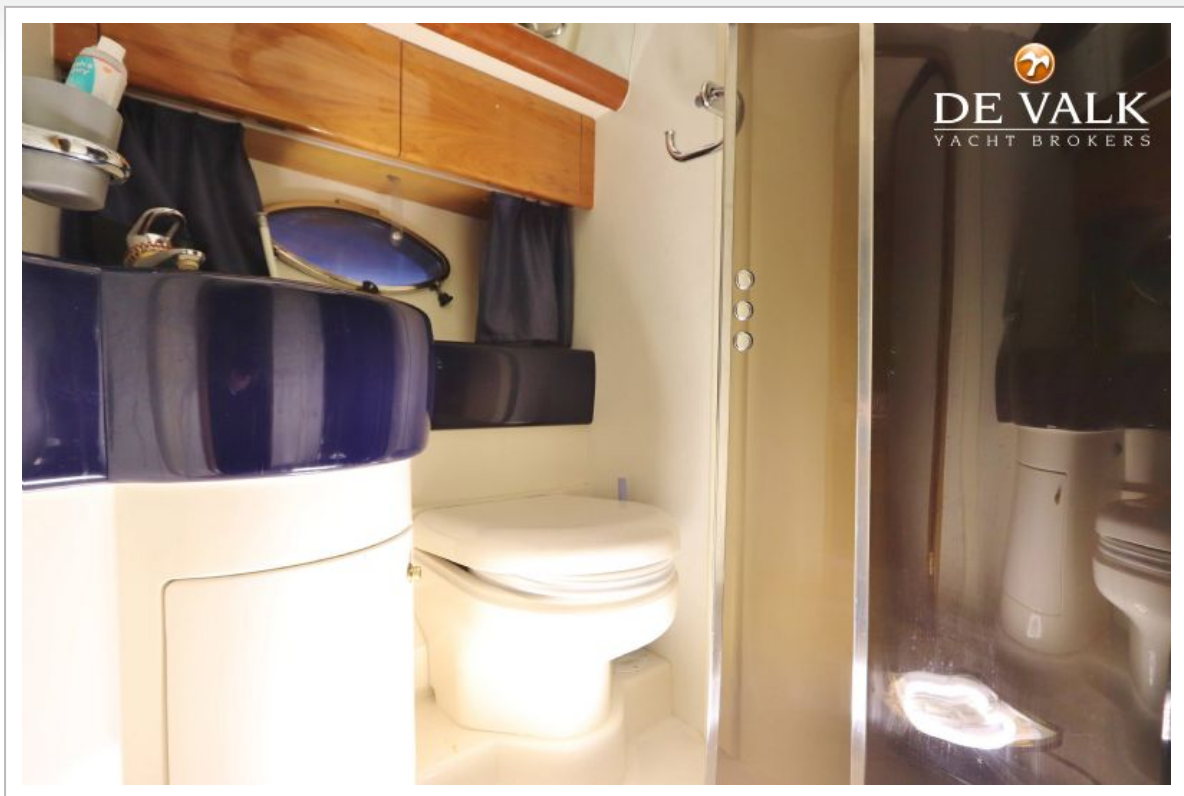
PRINCESS V52



PRINCESS V52



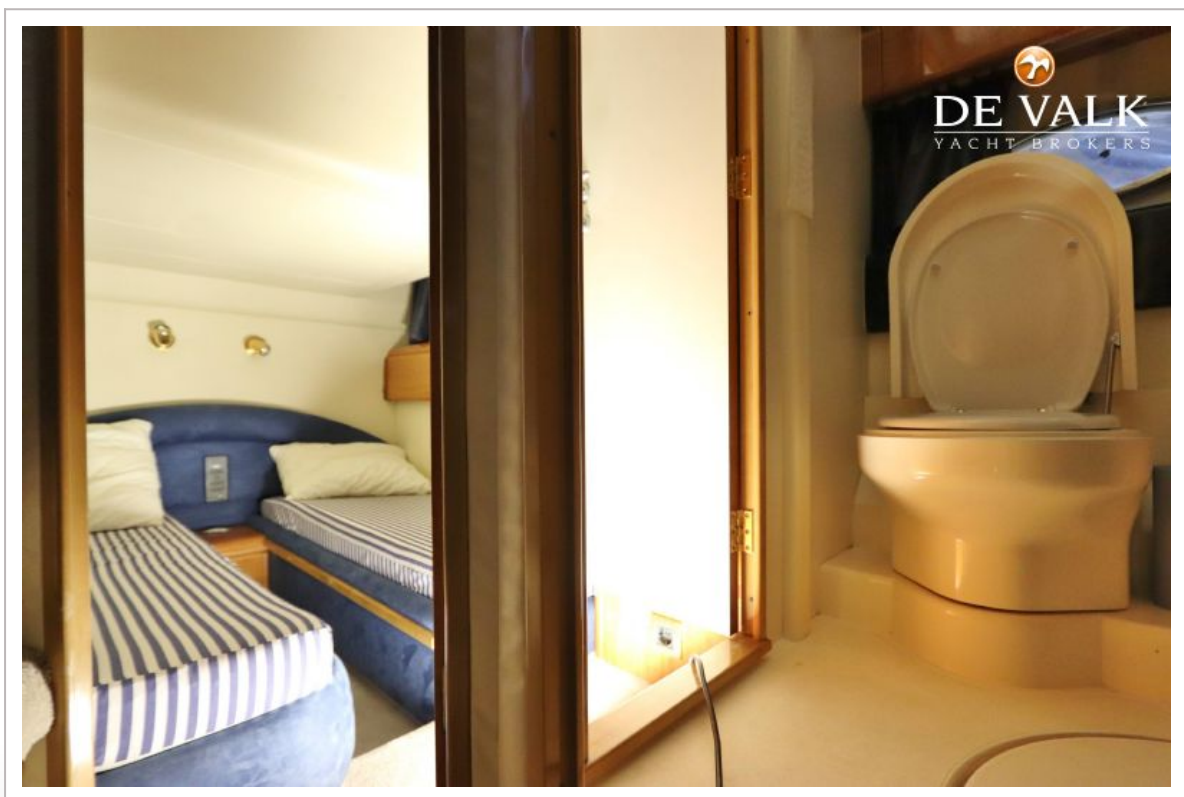
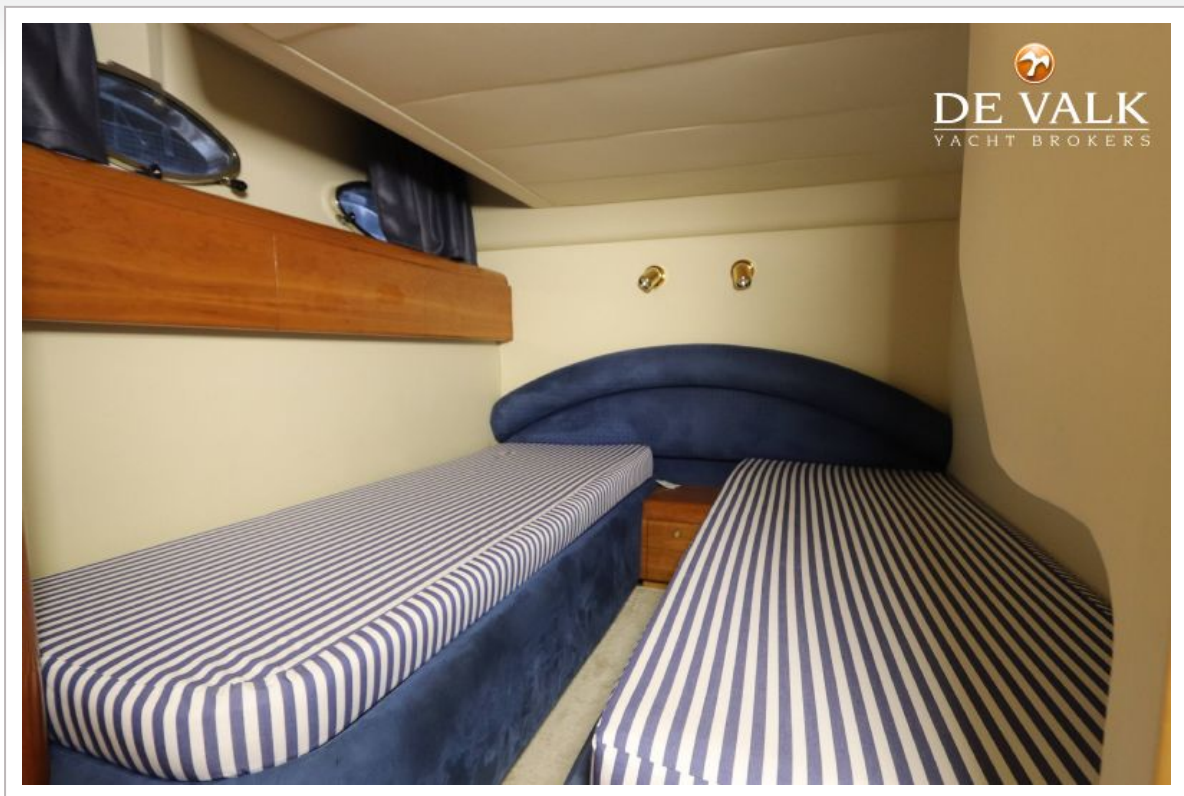
PRINCESS V52



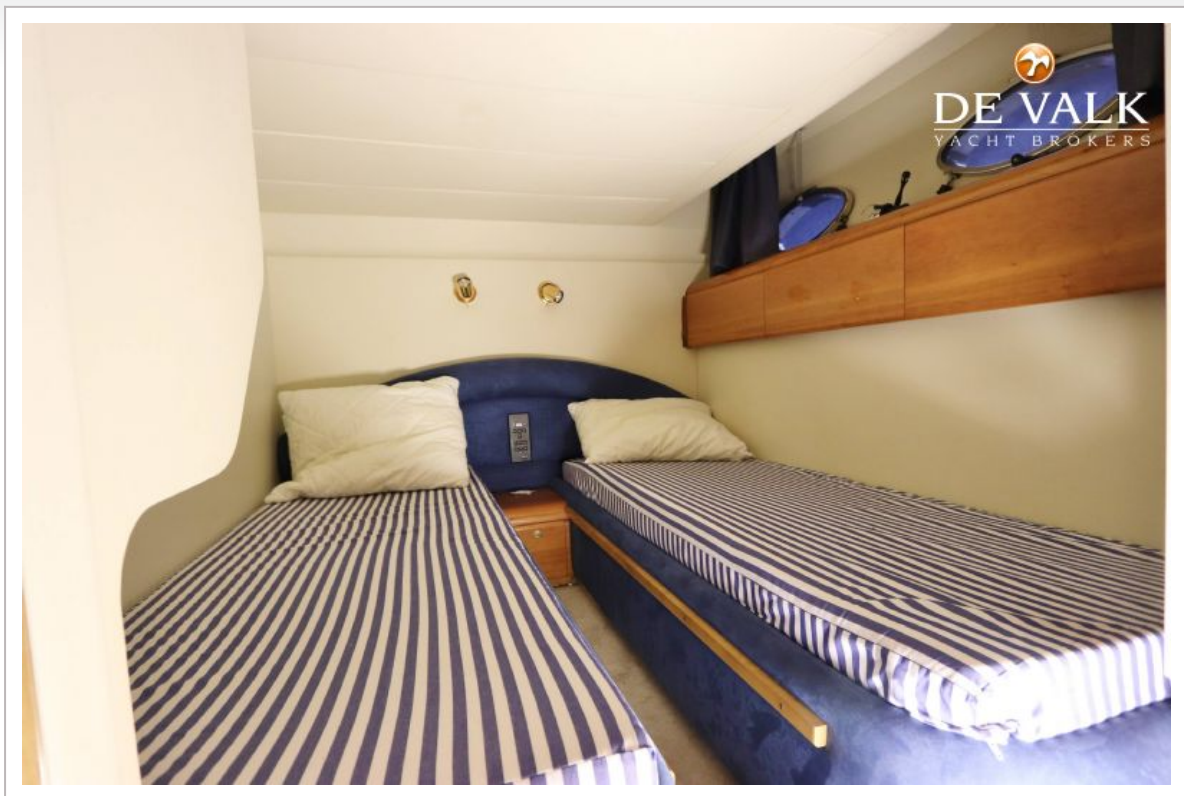
PRINCESS V52



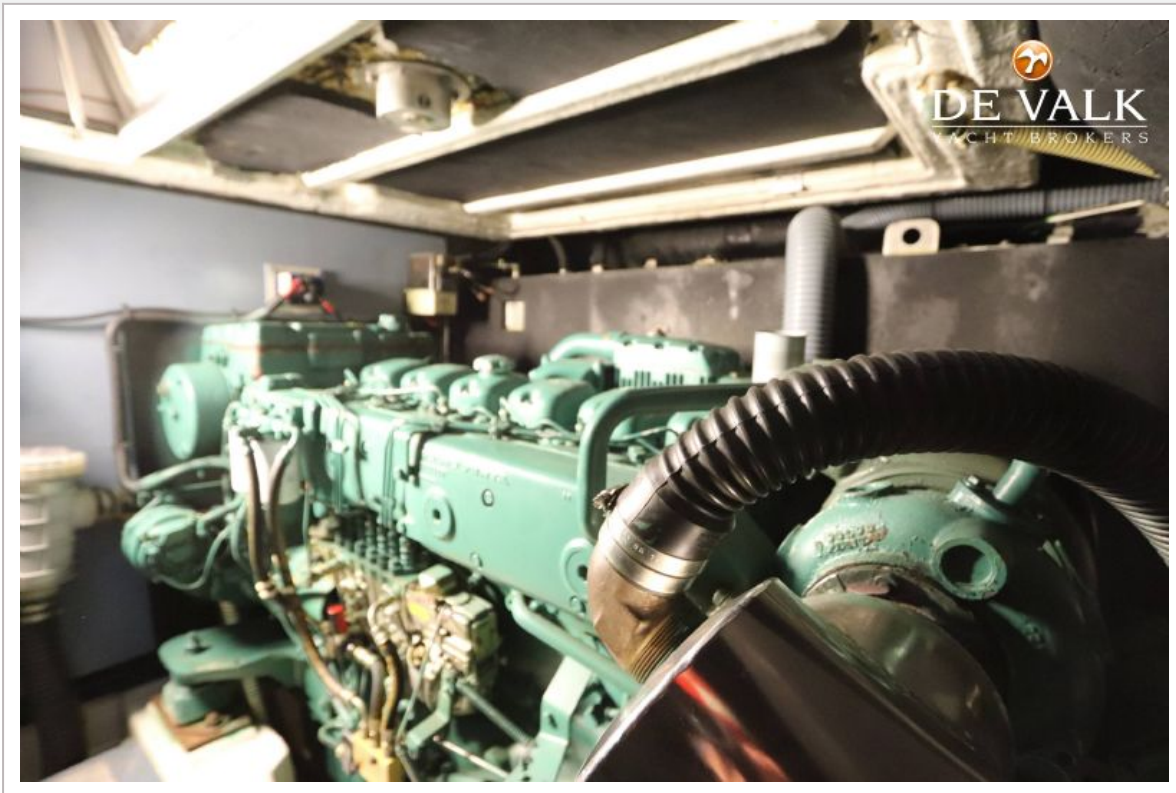
PRINCESS V52



PRINCESS V52



PRINCESS V52



PRINCESS V52

