



KOOPMANS 60



DE VALK
YACHT BROKERS

BROKER'S COMMENTS

Ready to sail you to any place in the world in comfort and safety. This Koopmans 60 is built for long term sailing. Designed by the famous Dutch naval architect Dick Koopmans and built by the top notch of the Frisian maritime specialist. She is just back from a trip to the Caribbean and was refitted and upgraded afterwards, so now ready for her next adventure. She comes with full hydraulic sails, extended engineering, new paintjob, good sails, 2 cabins, very spacious saloon and a safe and deep cockpit. Inside and outside steering position. Viewing is highly recommended!

Hans Visser

SPECIFICATIONS

Dimensions	18.20 x 5.20 x 2.20 (m)	Builder	Aluboot Hindeloopen
Built	1992	Cabins	2
Material	Aluminium	Berths	5
Engine(s)	1 x Mercedes MTU 6R099 OM366A diesel	Hp/Kw	176.00 (hp), 129.36 (kw)
Asking price	sold (VAT)	Lying	at sales office

CONTACT

Sales office	De Valk Hindeloopen B.V.	Telephone	+31 514 52 40 00
Address	Oosterstrand 1 8713 JS Hindeloopen NL	E-mail	hindeloopen@devalk.nl

DISCLAIMER

These particulars are given in good faith as supplied but cannot be guaranteed.



GENERAL

Model	KOOPMANS 60
Type	sailing yacht
LOA (m)	18,20
LWL (m)	14,38
Beam (m)	5,20
Draft (m)	2,20
Air draft (m)	24,00
Headroom (m)	2,00
Year built	1992
Builder	Aluboot Hindeloopen
Country	The Netherlands
Designer	Koopmans / Vripack / Aluboot
Displacement (t)	34,2
Ballast (tonnes)	lead 12,5
Hull material	aluminium
Hull colour	off-white Painted 2020
Hull shape	round-bilged
Keel type	fin keel
Superstructure material	aluminium
Rubbing strake	aluminum
Deck material	aluminium
Deck finish	Aluminium (ge-glaspareld) partly sanded paint (grey)
Superstructure deck finish	teak
Cockpit deck finish	teak
Dorades	6x stainless steel
Window frame	aluminium
Window material	tempered glass
Deckhatch	4x outside opening saloon, 2x outside opening pilot house
Insulation	foam
Fuel tank (litre)	Approx. 2000 ltr. in 4 hull integrated tanks



Level indicator (fuel tank)	yes
Fuel daytank (litre)	120 ltr. - fuel filter to and from daytank
Freshwater tank (litre)	Approx. 1000 ltr. in two intergrated tanks
Level indicator (freshwater)	yes
Blackwater tank (litre)	Approx. 140 ltr.
Wheel steering	cable steering
Inside helm position	Powersteering with joystick
Outside helm position	Solimar pedestal
Emergency tiller	yes
More info on hull	Painted 2020

ACCOMMODATION

Cabins	2
Berths	5
Interior	teak
Layout	The lower main saloon has to port a large lounge sofa and to starboard a large folding table with intergraded drawers surrounding a huge U-sofa and access to the lower level (wine cellar) of the vessel.
Floor	teak and holly
Pilot house/deck saloon	With skippers bunkbed, navigation table and sittee
Saloon	yes
Headroom saloon (m)	2 mtr.
Heating	central hot water Kabola
Heating 2	NewPort by Dickinson - Diesel
Navigation center	yes
Chart table	yes
Aft Cabin	With bunkbed
Galley	yes
Countertop	Teak varnished
Sink	stainless steel Double
Cooker	ceramic 4 burner



Microwave/oven combi	Samsung - under stove
Fridge	60 ltr. top opening & 60 ltr. at pilot house
Freezer	60 ltr. top opening
Hot water system	220V + engine 30 ltr. boiler
Water pressure system	Plus back up system (electrical and manual)
Owners cabin	double bed
Bed length (m)	2 mtr.
Wardrobe	yes
Bathroom	en suite
Toilet	Jabsco
Toilet system	electric
Wash basin	Yes
Shower	Yes
Guest cabin 1	bunk bed Aftcabin
Bed length (m)	2 mtr
Wardrobe	yes
Bathroom	en suite
Toilet	yes
Toilet system	yes
Wash basin	yes
Shower	yes
Extra info	Forward is a storage with access both via a large deck hatch with air pressed springs and a large watertight bulkhead with door leading to the owners cabin.

MACHINERY

No of engines	1
Make	Mercedes MTU 6R099
Type	OM366A
HP	176
kW	129.36
Fuel	diesel



Maximum speed (kn)	9
Cruising speed (kn)	7,5
Engine cooling system	freshwater heat exchanger
Drive	shaft
Engine controls	Hydraulically controlled pitch position
Bowthruster	Hydraulic engine-driven - retractable 15kw
Exhaust	watercooled
Propeller type	Pitch propeller
Propeller blades	3
Propeller shaft material	stainless steel
Manual bilge pump	yes
Electric bilge pump	yes
Electrical installation	12 / 24 / 220 Volt
Generator	Northern lights 8kw - yearly serviced
Start battery	4x 105Ah
Service battery	10x 105Ah - 24V
Battery charger	Mastervolt Mass 24/75-C Mastervolt Mass 24/75
Inverter	Mastervolt Mass 24/2500
Solar panel	No Panel - solar panel connection available (MPPT Mastervolt chargemaster 25)
Shorepower	with cable
Extra info	MTU yearly serviced (& rebuilt water pump 2020 & rebuilt injectors 2020)
Extra info	anodes replaced 2021

NAVIGATION

Compass	C.Plath Venus
Electric compass	Raymarine (whole system)
Multi control display	Autohelm Masterview
Depth sounder	Data from: 2x Raymarine St70
Log	Data from: 2x Raymarine St70
Windset	Data from: 2x Raymarine St70



Repeater	B&G in owners cabin (not connected)
VHF	Sailor Compact VHF RT2048 25Watt Sailor Compact VHF RT2048 Atis Elna Klasse 1
Autopilot	Raymarine Smartpilot X30 - Raymarine R70s with joystick - Autohelm 7000 as back up.
Radar	Furuno 1830 - 48 mile radar - with wireless connection I-pad
GPS	Furuno GP-32
Radar/GPS/plotter	Raymarine E80
Navtex	K41 Navtex receiver
AIS transceiver	Raymarine 650 Class B
Navigation lights	yes

EQUIPMENT

Sun awning	For longer anchoring - over the boom
Winter cover	2019
Cockpit cushions	yes
Boarding ladder	stainless steel
Anchor	Spade - 105lbs
Anchor chain	Approx. 80mtr. - 13mm - tested and galvanised 2015
Windlass	Lewmar 4000 hydraulic
Capstan	yes
Sea railing	yes
Grab rail (superstructure)	aluminium
Railing side opening gates	yes
Pushpit	yes
Pulpit	yes
Wiper	2x
Horn	yes
Fenders	yes
Mooring lines	yes
Spare parts	Large quantity of essential spare parts for long journey
Radio-cd player	Sony



DVD player	Bullit
Cockpit speakers	yes
Speakers in salon	yes
Fire extinguisher	1x saloon/kitchen, 1x engine room, 1x batteryroom
Extra info	Sea anchor with 150 m line

RIGGING

Rigging	sloop-cutter
Standing rigging	Rod 10 & 16mm
Brand mast	Rondal
Material mast	aluminium
Spreaders	2 sets
Mainsail	Apollo sails (Scheveningen) HydraNet 480 (2015) - 67m²
Stoway mast	yes
Genoa furler	Rondal Hydrofurl 200 - yankee furler
Gennaker	Hood - MPS with stripper - 205m²
Staysail	Apollo sails Hydrant 433 - 2015
Staysail furler	Rondal hydrofurl 100
Yankee	Apollo sail HydraNet 393/433 radial 2015- 89m²
Reefing System	main in-mast furling Rondal
Backstay adjuster	hydraulic Navtex
Boomvang	hydraulic Navtex
Primary sheet winch	4x Lewmar 550 2-speed - Electric / Hydraulic
Secondary sheet winch	2x Lewmar 46 2-speed mainsheet winches on coachroof
Genoa sheetwinches	2x Lewmar 650 2-speed - Electric / Hydraulic
Halyard winches	1x Lewmar 40 2-speed on mast
Multifunctional winches	1x Lewmar 550 2-speed electric / Hydraulic at base of the mast
Extra info	All furlers and winches professionally serviced 2020





KOOPMANS 60



KOOPMANS 60





KOOPMANS 60



KOOPMANS 60

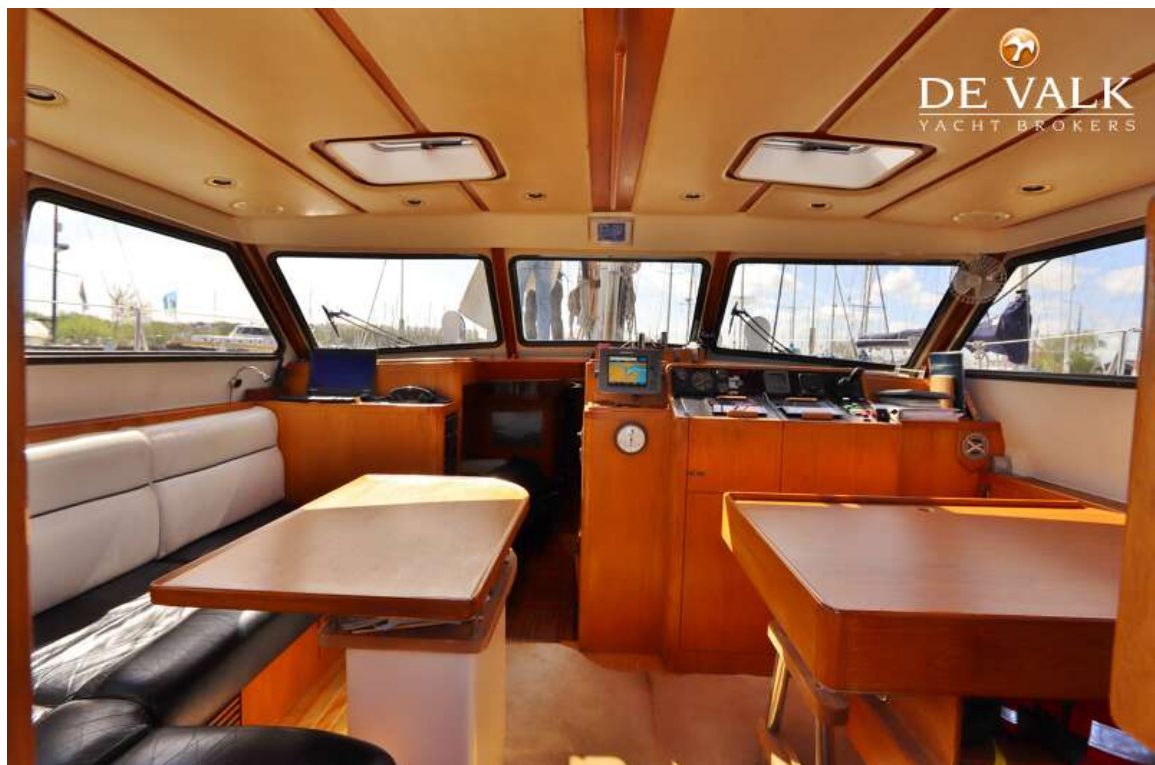




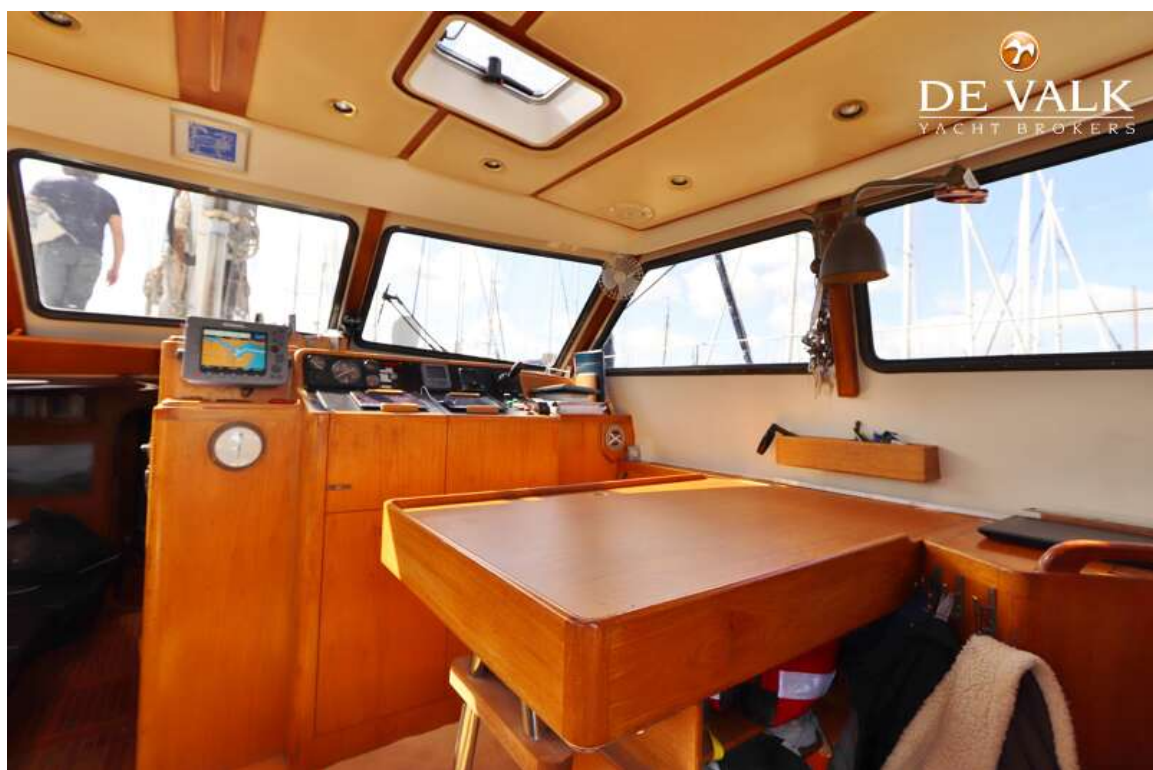




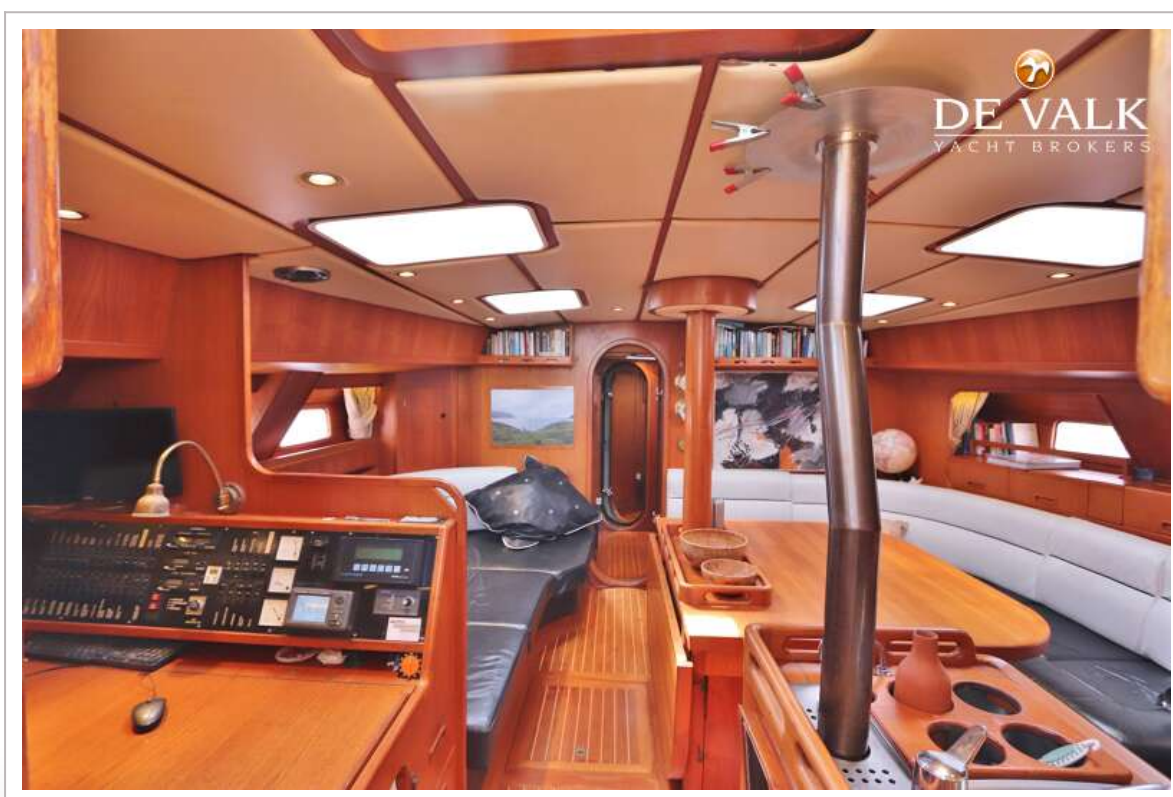
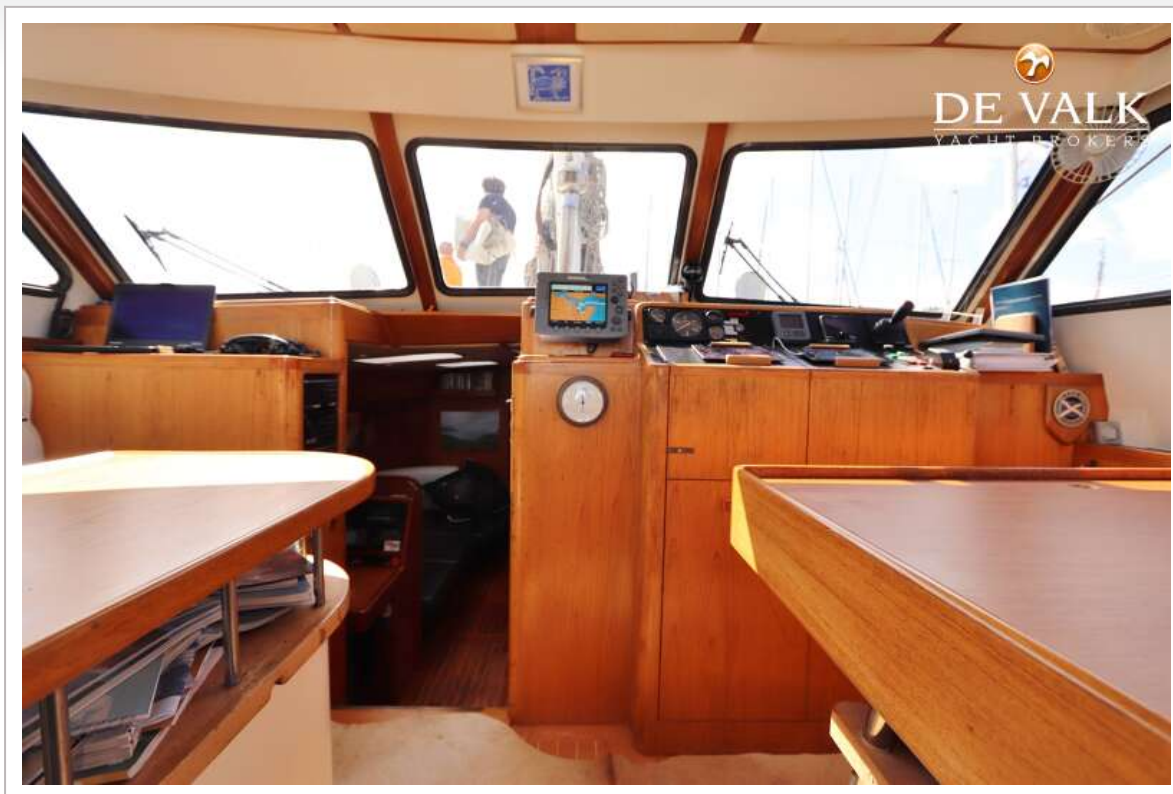
KOOPMANS 60



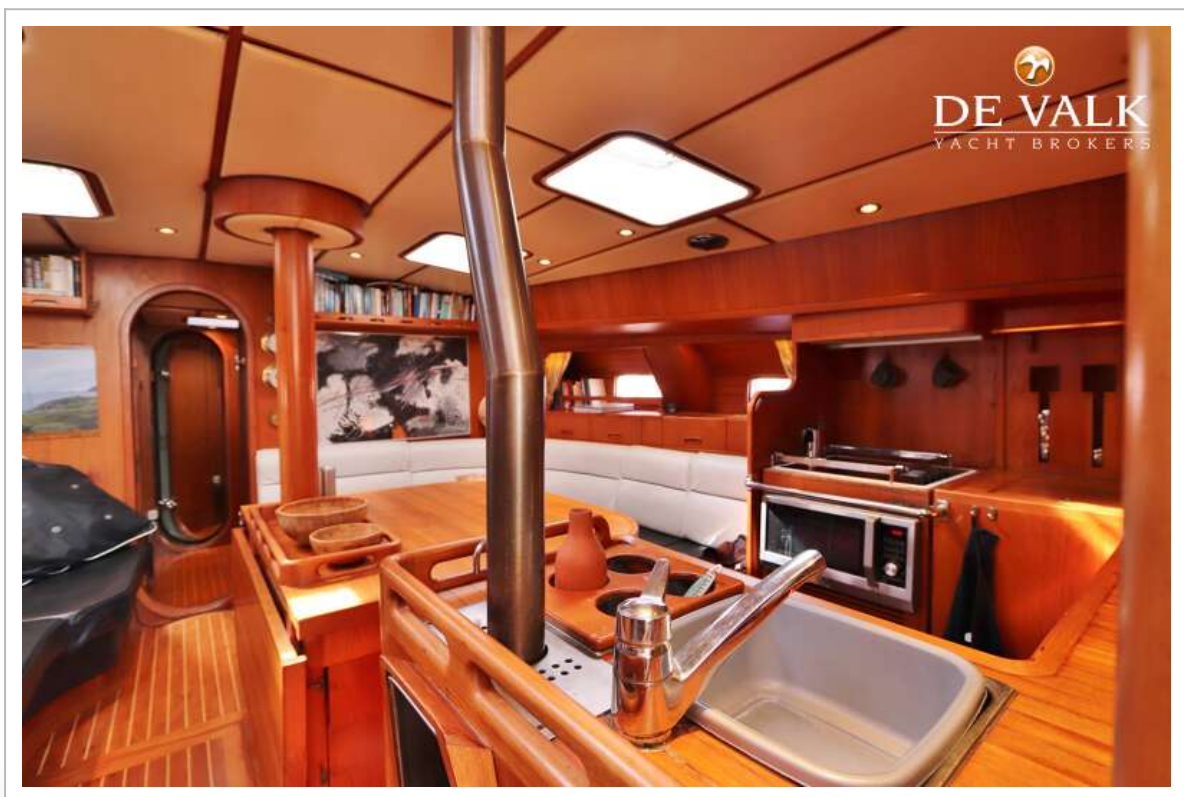
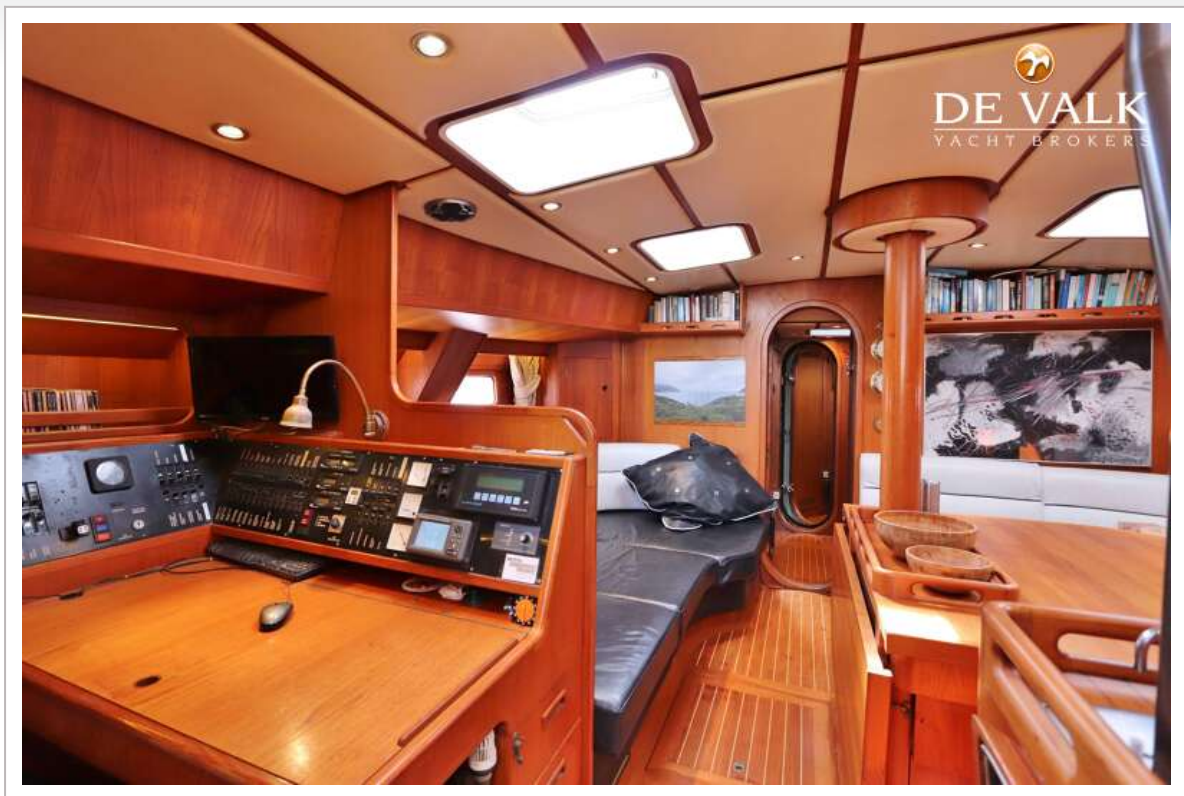
KOOPMANS 60



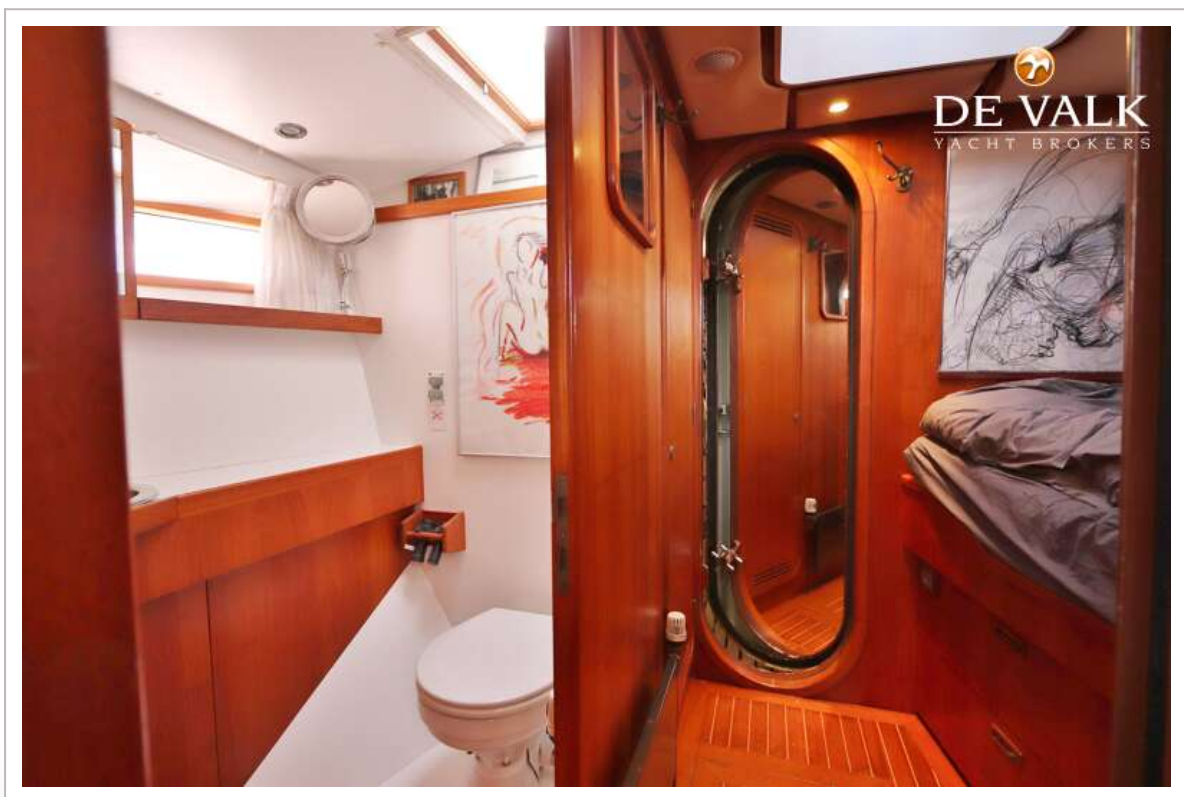
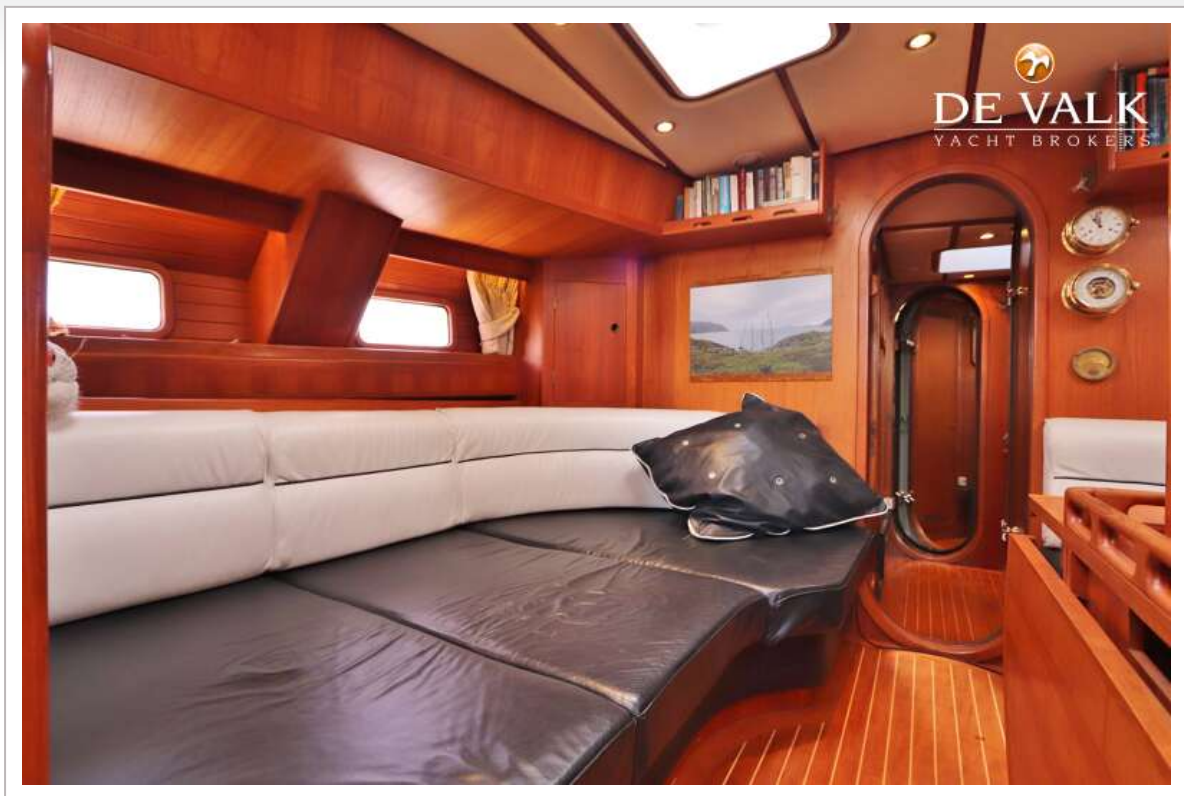
KOOPMANS 60

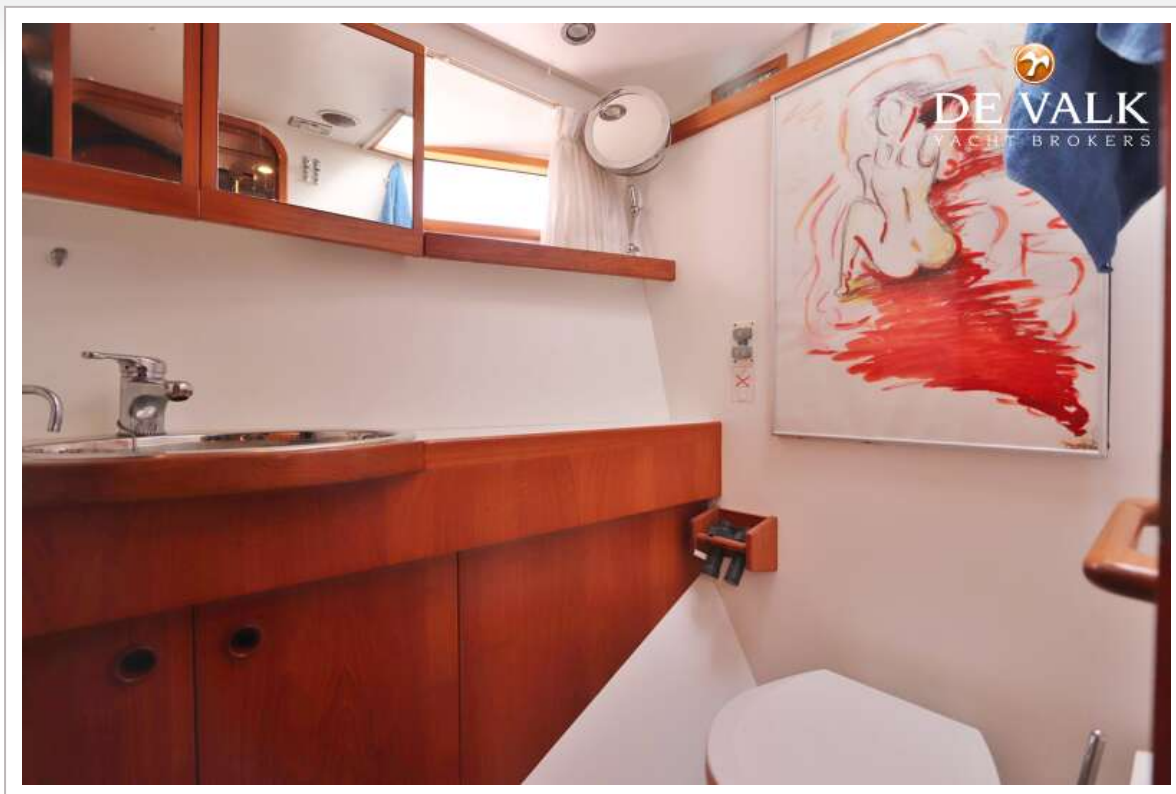


KOOPMANS 60

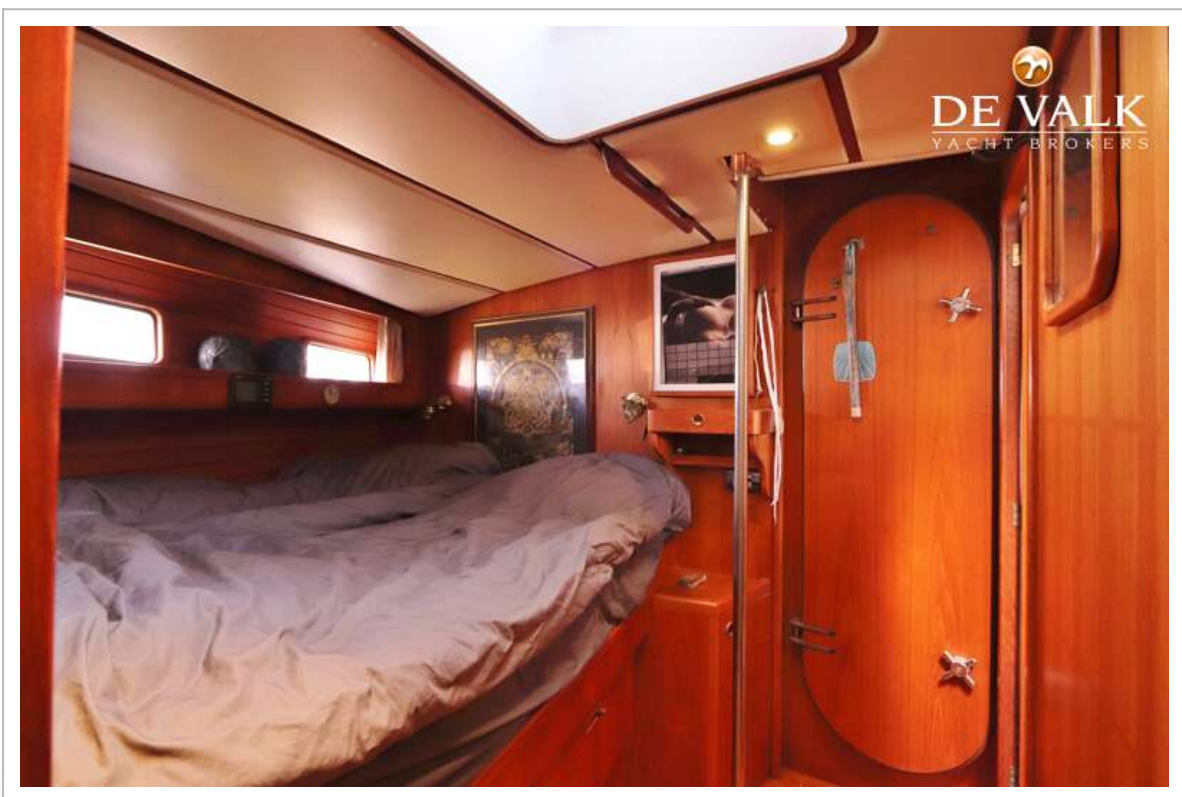
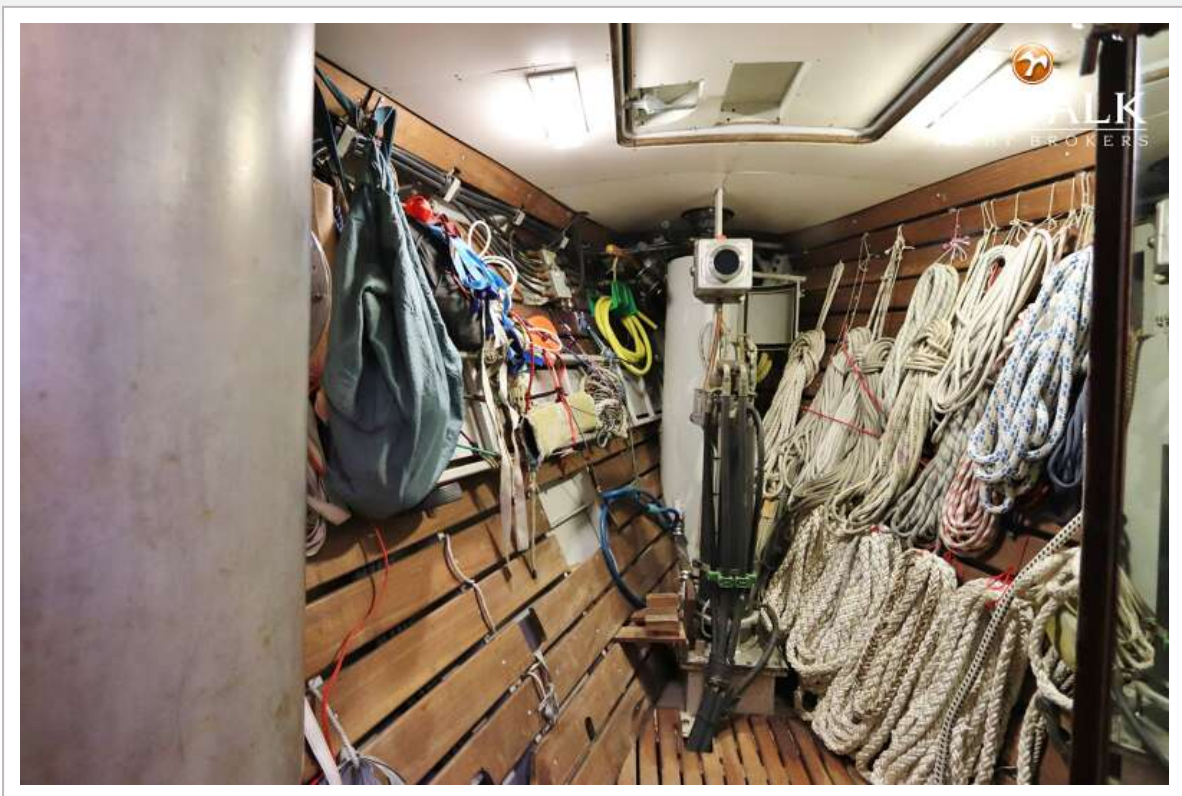


KOOPMANS 60





KOOPMANS 60



KOOPMANS 60



KOOPMANS 60



