



## BOARNCRUISER 1200 ELEGANCE

# BOARNCRUISER 1200 ELEGANCE

## BROKER'S COMMENTS

Boarncruiser 1200 Elegance "Sare Nur": A beautiful lined steel motoryacht, build for her first owner in 2015. Well equipped with i.a. electric bow- and sternthruster, double glazed windows. Build and designed by De Boarnstream shipyard, CE category C, length overall 12.16 mtr. "Sare Nur" is in an 'as new' condition. Can be sold excl. VAT, visit on appointment only.

*Henk Sijbranda*

## SPECIFICATIONS

<b>Dimensions</b>	12.16 x 3.95 x 1.20 (m)	<b>Builder</b>	De Boarnstream, Jirnsum
<b>Built</b>	2015	<b>Cabins</b>	2
<b>Material</b>	Steel	<b>Berths</b>	6
<b>Engine(s)</b>	1 x Volvo Penta D3 - 150 diesel	<b>Hp/Kw</b>	150.00 (hp), 110.00 (kw)
<b>Asking price</b>	sold (VAT )	<b>Lying</b>	elsewhere / Not at sales office

## CONTACT

<b>Sales office</b>	De Valk Hindeloopen B.V.	<b>Telephone</b>	+31 514 52 40 00
<b>Address</b>	Oosterstrand 1 8713 JS Hindeloopen NL	<b>E-mail</b>	hindeloopen@devalk.nl

## DISCLAIMER

These particulars are given in good faith as supplied but cannot be guaranteed.



# BOARNCRUISER 1200 ELEGANCE

## GENERAL

Model	BOARNCRUISER 1200 ELEGANCE
Type	motor yacht
LOA (m)	12,16
LWL (m)	11,41
Beam (m)	3,95
Draft (m)	1,20
Air draft (m)	2,85
Headroom (m)	2,10
Year built	2015
Builder	De Boarnstream, Jirnsum
Country	The Netherlands
Designer	Henk Hokwerda
Displacement (t)	14,9
CE norm	C
Hull material	steel
Hull colour	grey
Hull thickness (mm)	Steel (5 mm), frame work steel (6 mm)
Hull shape	hard chine
Superstructure material	steel
Superstructure (mm)	4
Rubbing strake	stainless steel
Deck material	steel
Deck finish	Flexiteek with black lines
Superstructure deck finish	paint
Cockpit deck finish	Flexiteek with black lines
Window frame	No frames
Window material	tempered glass Integrated in superstructure
Portholes	5x with fly screens
Insulation	foam
Mast can be lowered	Folding stainless steel antenna mast on roof.



# BOARNCRUISER 1200 ELEGANCE

Fuel tank (litre)	steel Approx. 600 ltr.
Level indicator (fuel tank)	Wema
Freshwater tank (litre)	polyethylene Approx. 400 ltr.
Level indicator (freshwater)	Wema
Blackwater tank (litre)	polyethylene Approx. 215 ltr.
Level indicator (blackwater)	Wema
Greywater tank (litre)	polyethylene Approx. 215 ltr.
Level indicator (greywater)	Wema
Wheel steering	hydraulic
Inside helm position	yes
Emergency tiller	yes

## ACCOMMODATION

Cabins	2
Berths	6
Interior	Light oak
Open cockpit	L-shaped sofa and two folding chairs in cockpit
Saloon	with L-shaped dinette, saloon table to starboard and helm to port.
Headroom saloon (m)	> 2 mtr.
Sliding roof	Large, electric WEBASTO sunroof in saloon.
Heating	Eberspächer Airtronic D5 with remote access via mobile phone
Dinette	Saloon table can be electrically lowered and converted to double berth
Opening door to aft deck	yes
Galley	L-shaped galley to port aft
Countertop	
Sink	stainless steel
Cooker	calor gas 2 burner
Oven	In Cooker
Extractor	yes
Fridge	Approx. 130 ltr.



# BOARNCRUISER 1200 ELEGANCE

Freezer	In fridge
Hot water system	220V + engine - Hot water boiler 40 ltr.
Water pressure system	electrical
Owners cabin	French bed
Bed length (m)	> 2 mtr.
Wardrobe	drawers and shelves
Bathroom	shared
Toilet	Planus with fresh water flushing
Toilet system	electric
Wash basin	
Shower	
Guest cabin 1	double bed
Bed length (m)	> 2 mtr.
Extra info	Venetian blinds for side windows and entrance door in saloon
Extra info	- Additional sliding window in saloon to port. - Night lighting in interior

## MACHINERY

No of engines	1
Make	Volvo Penta
Type	D3 - 150
HP	150
kW	110,00
Fuel	diesel
Year installed	2015
Maximum speed (kn)	9,00
Cruising speed (kn)	7,00
Consumption (l/hr)	6,00
Range (nm)	550
Engine hours	105
Engine cooling system	freshwater heat exchanger



# BOARNCRUISER 1200 ELEGANCE

Drive	shaft
Engine controls	Electronic Vessel Control (EVC) with electronic throttle.
Gearbox	ZF
Bowthruster	electric Sidepower SE80 - also remotely controlled
Sternthruster	electric Sidepower SE80 - also remotely controlled
Exhaust	watercooled
Thrust bearing	Flexible trust coupling
Propeller type	fixed
Propeller blades	4
Propeller shaft material	stainless steel
Shaft lubrication	water
Manual bilge pump	yes
Electric bilge pump	yes
Electrical installation	12 / 220 V
Start battery	3 x service battery 12 V/140 Ah
Service battery	Starter battery 12 V/120 Ah
Battery monitor	yes
Battery charger/inverter	Victron MultiPlus Compact 12 V/2.000 W/80 A
Shorepower	with cable

## NAVIGATION

Compass	yes
Depth sounder	On Raymarine e125 HybridTouch Display 12"
Log	On Raymarine e125 HybridTouch Display 12"
Autopilot	Raymarine p70 EVO with remote control Raymarine S100
Plotter/GPS	Raymarine e125 HybridTouch Display 12"

## EQUIPMENT

Bimini	yes
Window cover	Suns protection for windscreen
Cockpit cushions	yes



# BOARNCRUISER 1200 ELEGANCE

Cockpit table	Teak
Bathing platform	yes
Boarding ladder	stainless steel
Transom door	Transom door to swim platform
Deck shower	Hot and cold water
Anchor	Bruce - stainless steel / 18 kg
Anchor chain	30 mtr. / 8mm
Windlass	electrical With wireless remote control
Railing side opening gates	Side exit doors in bulwark to port and starboard
Pulpit	yes
Lifejackets	yes
Wiper	2 x electric windscreen wiper
Horn	electric
Fenders	yes
Mooring lines	yes
Radio-cd player	yes
Cockpit speakers	Two speakers
Speakers in salon	Two speakers
Fire extinguisher	2x
Auto extinguisher system	In engine compartment

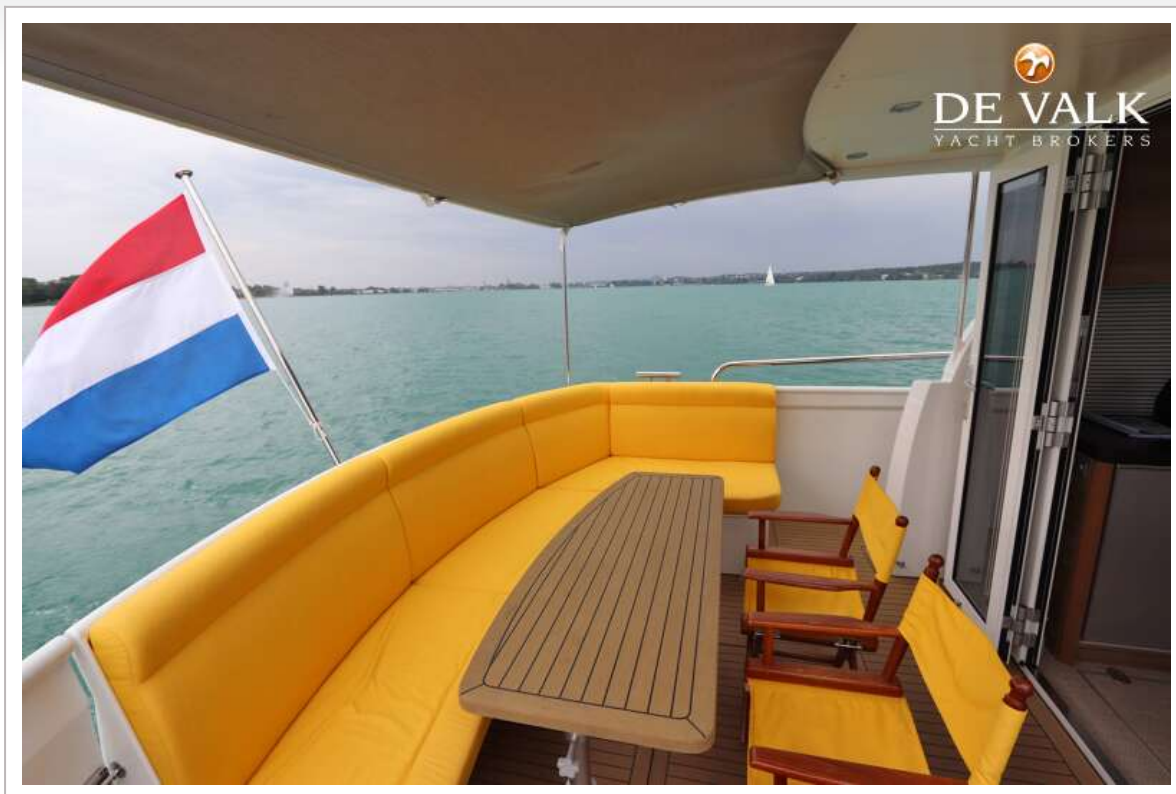


# BOARNCRUISER 1200 ELEGANCE

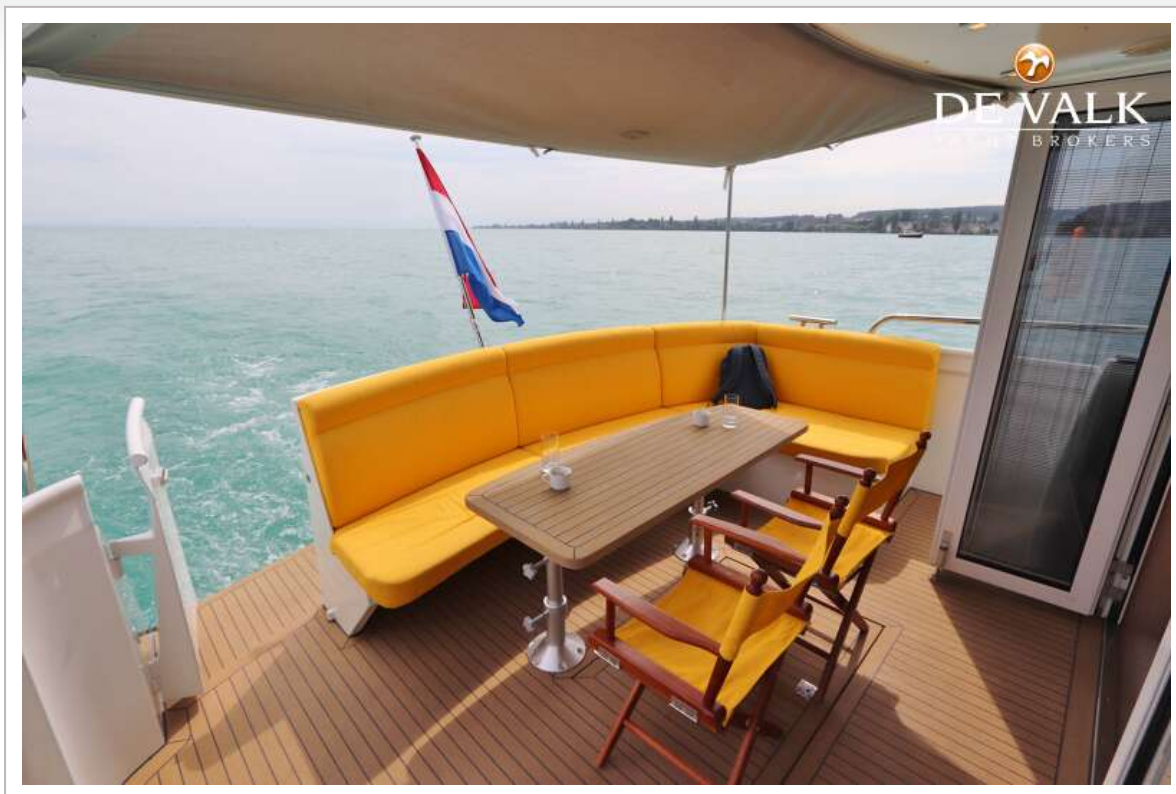




# BOARNCRUISER 1200 ELEGANCE



# BOARNCRUISER 1200 ELEGANCE

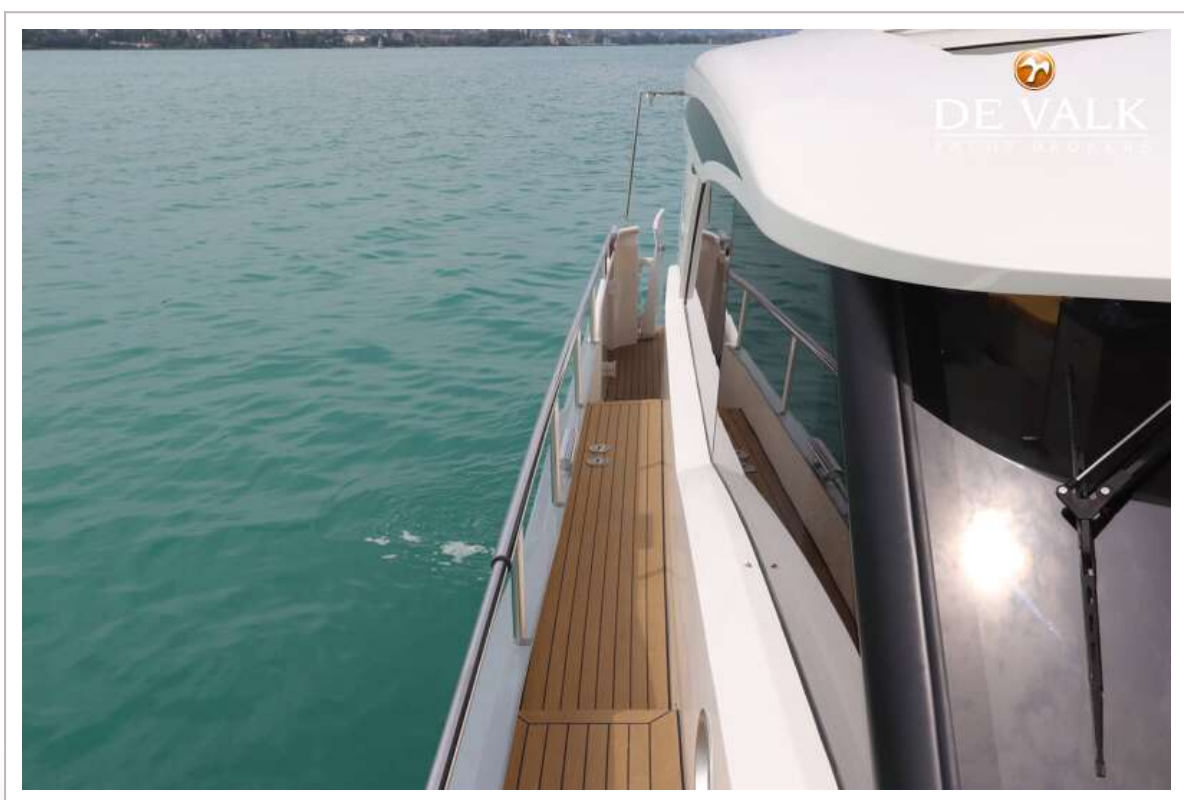




# BOARNCRUISER 1200 ELEGANCE



# BOARNCRUISER 1200 ELEGANCE

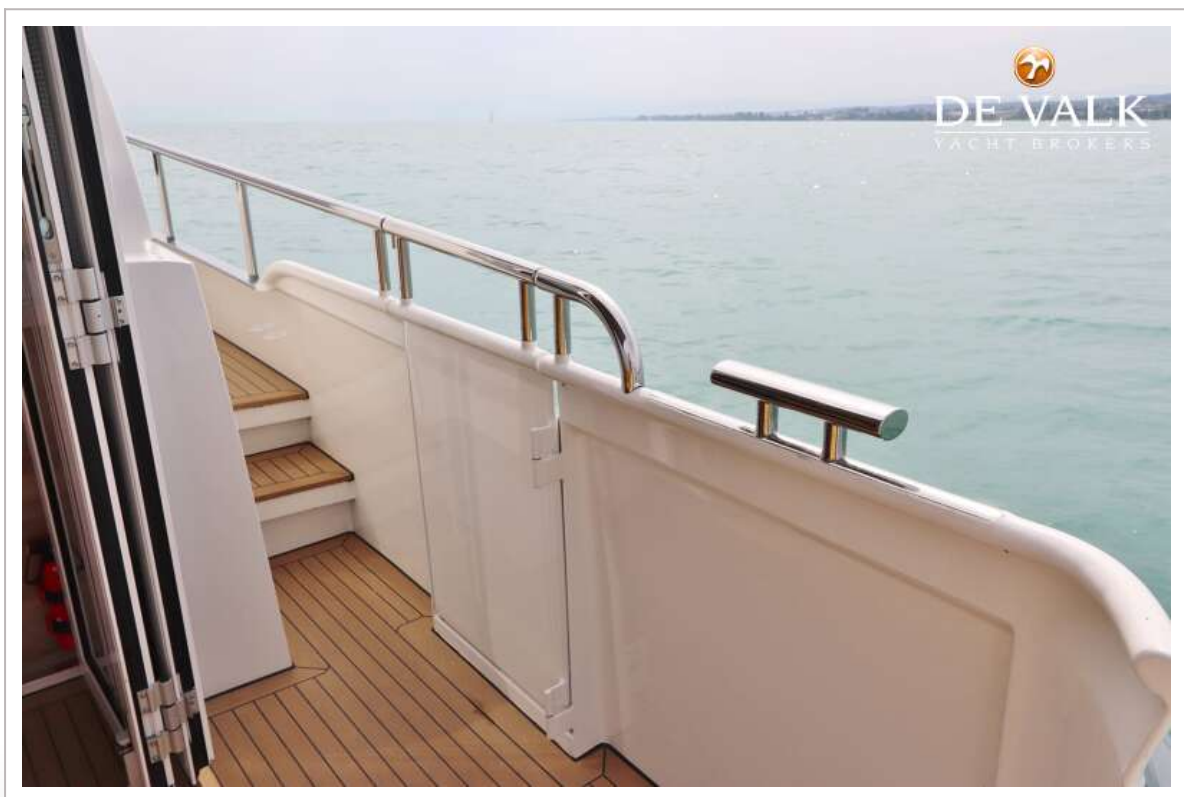




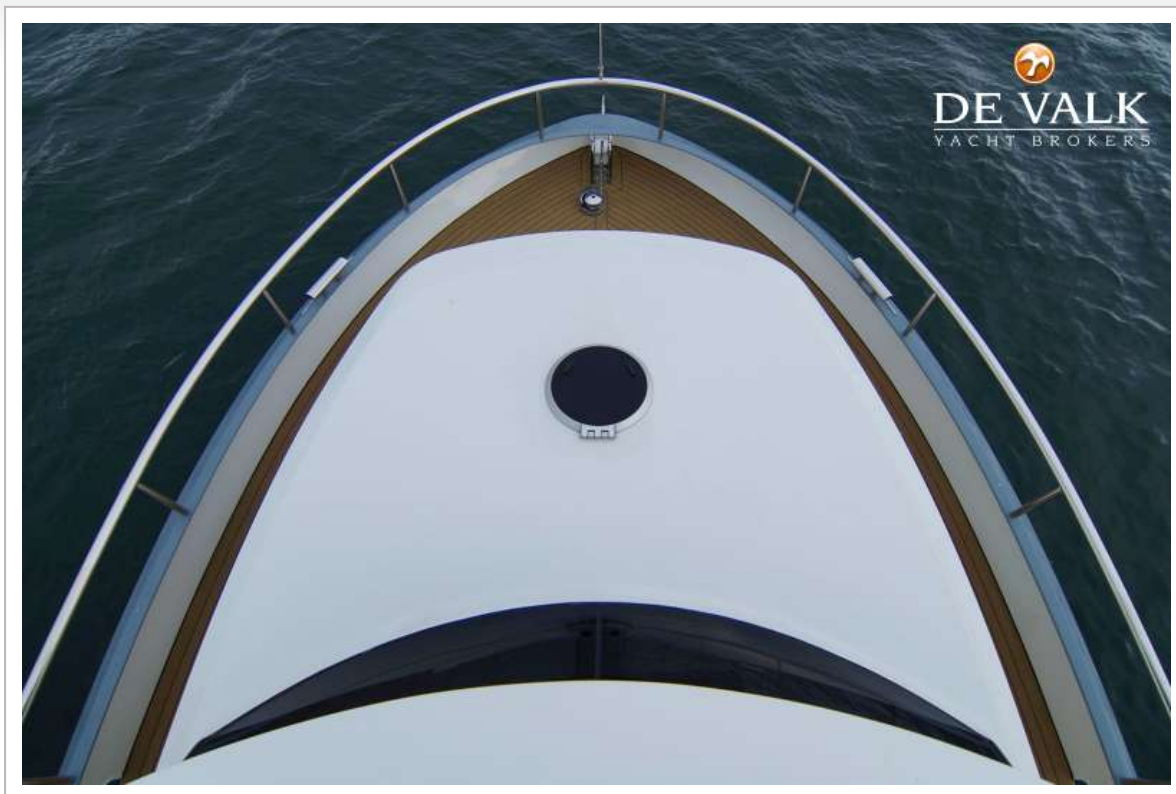
# BOARNCRUISER 1200 ELEGANCE



# BOARNCRUISER 1200 ELEGANCE

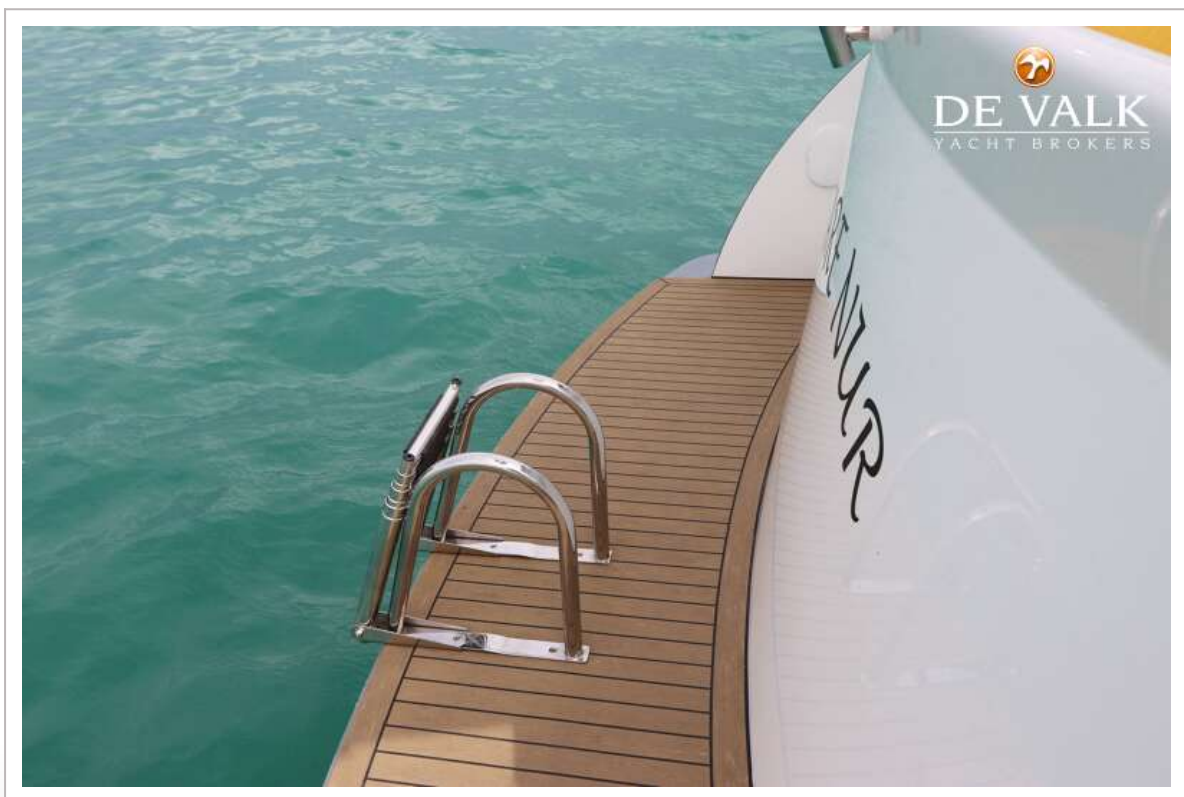


# BOARNCRUISER 1200 ELEGANCE





# BOARNCRUISER 1200 ELEGANCE

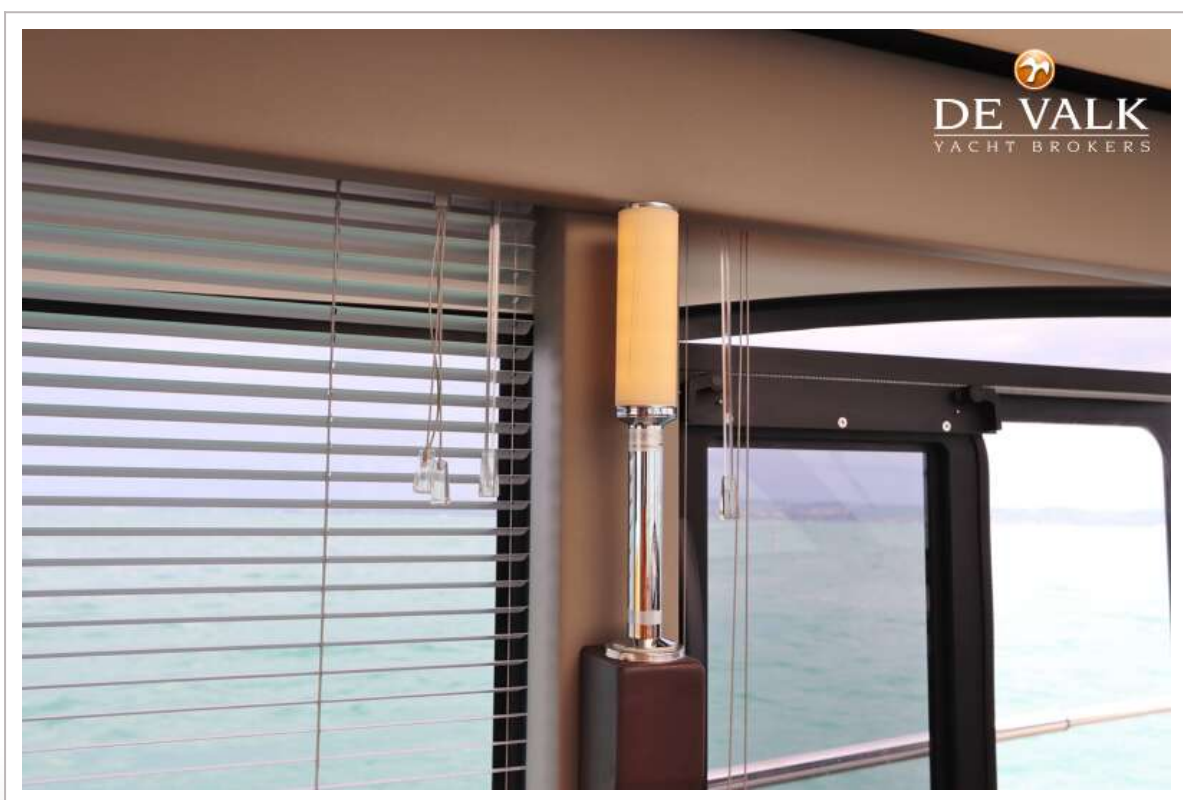
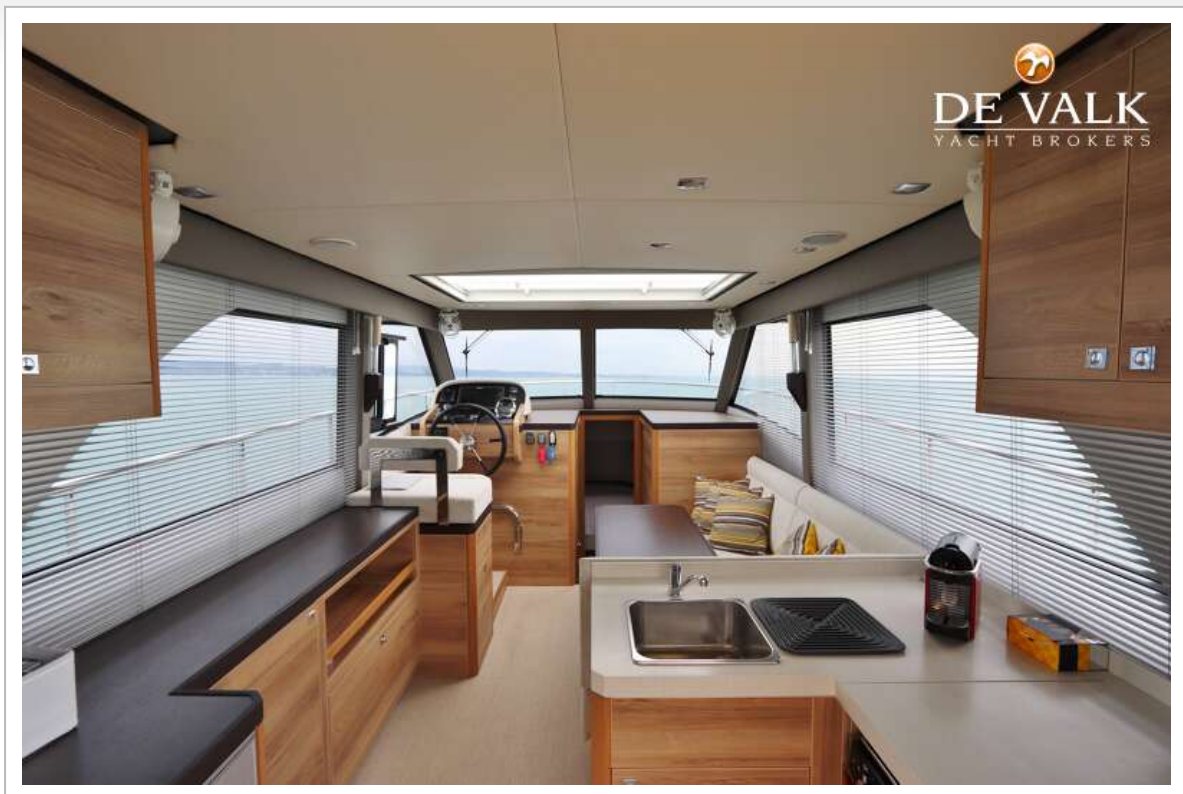




# BOARNCRUISER 1200 ELEGANCE

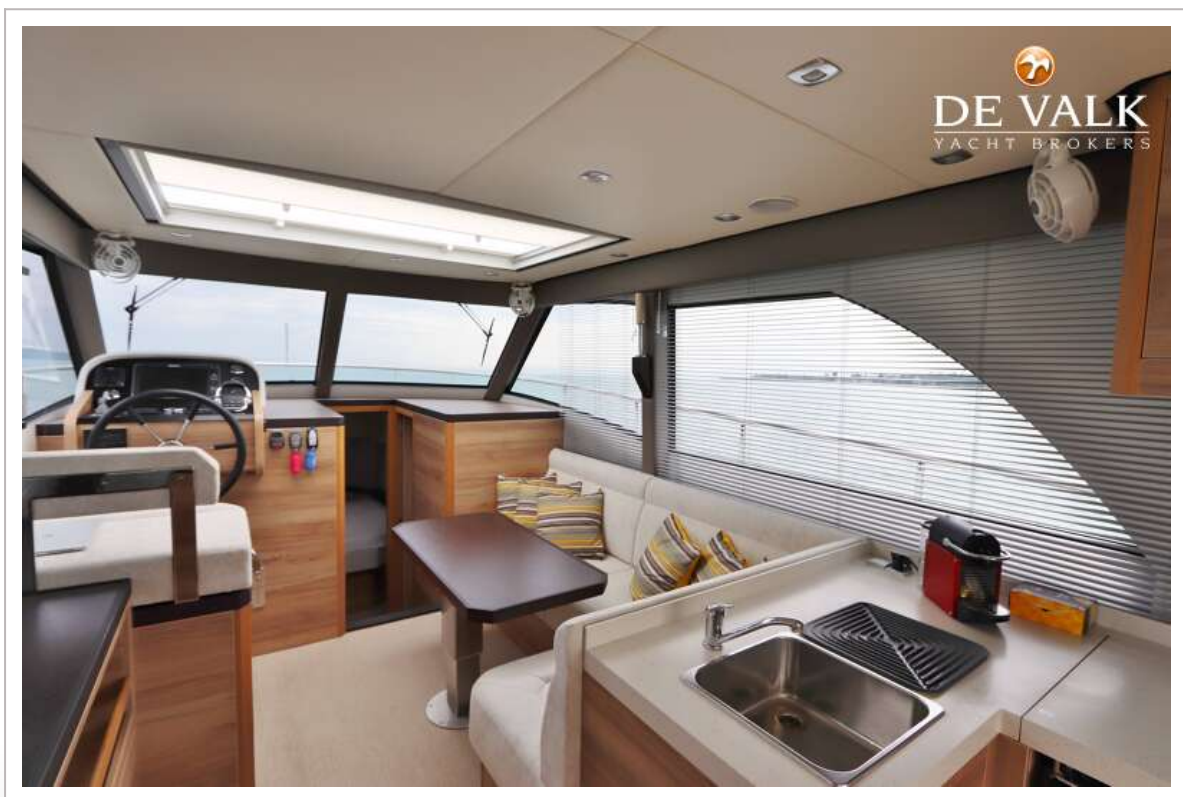
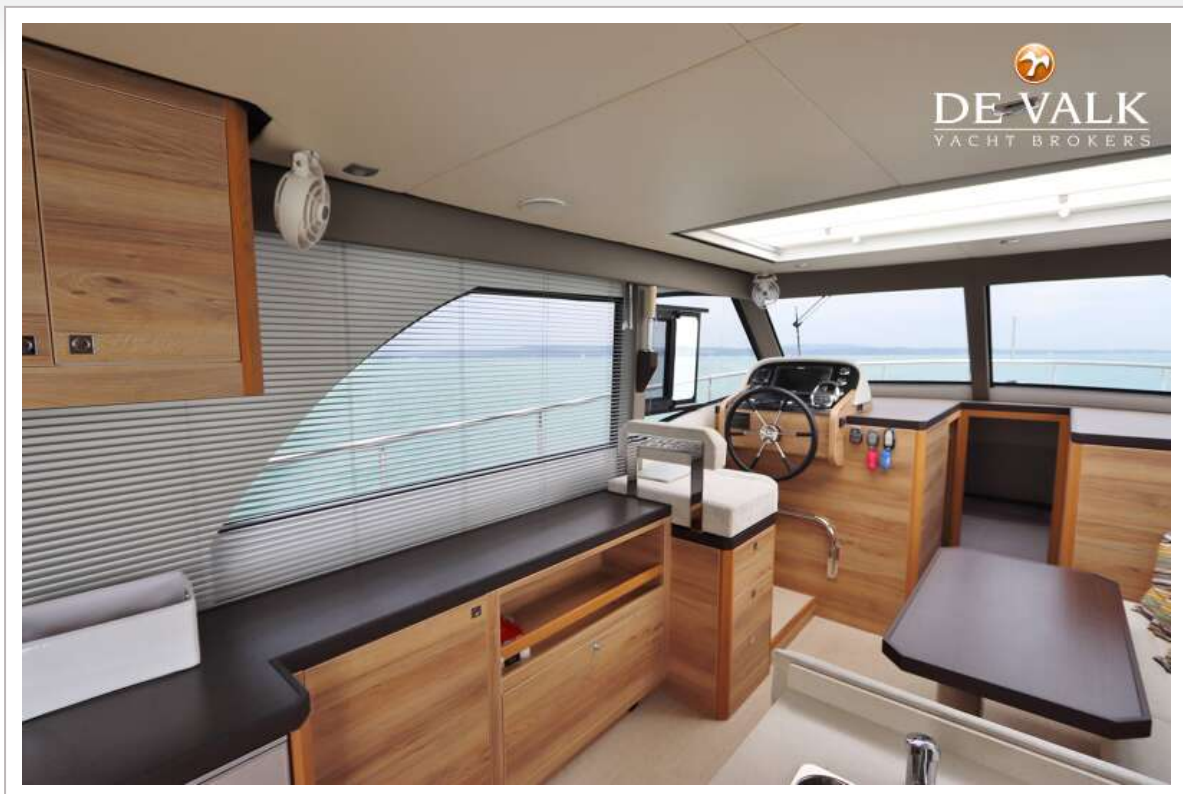


# BOARNCRUISER 1200 ELEGANCE





# BOARNCRUISER 1200 ELEGANCE



# BOARNCRUISER 1200 ELEGANCE





# BOARNCRUISER 1200 ELEGANCE

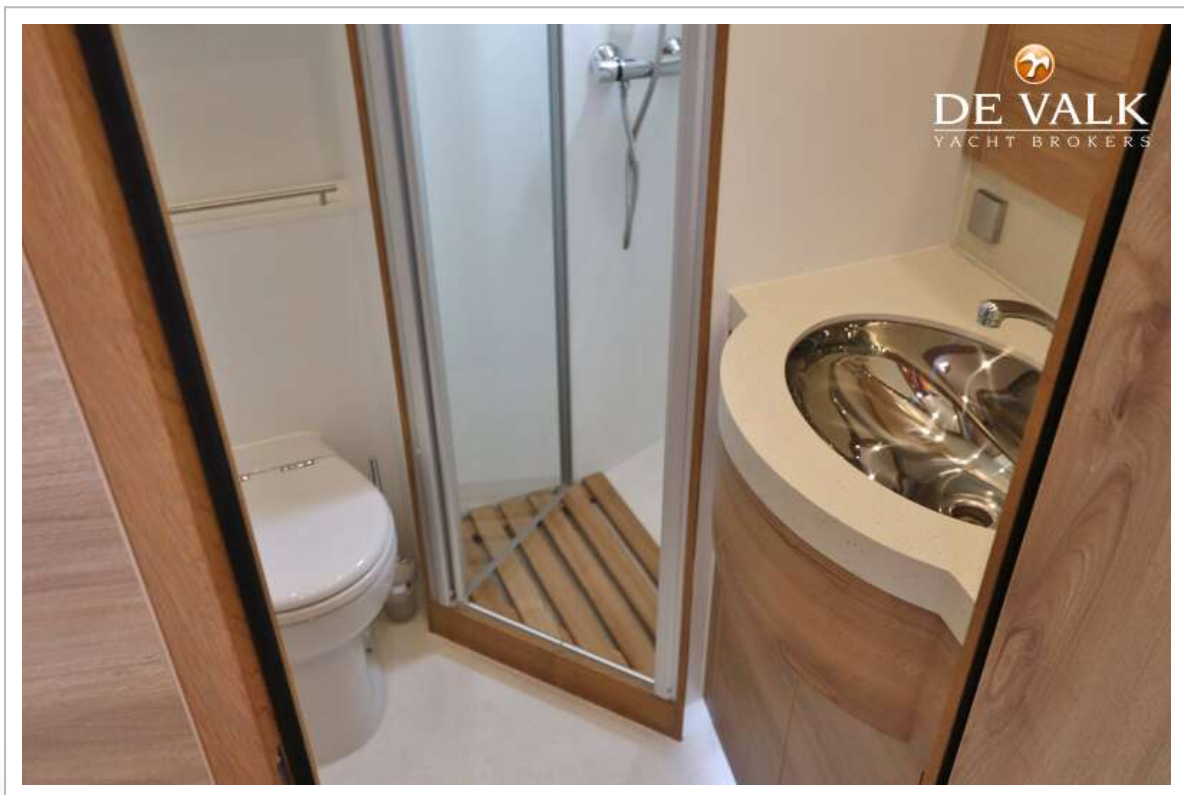
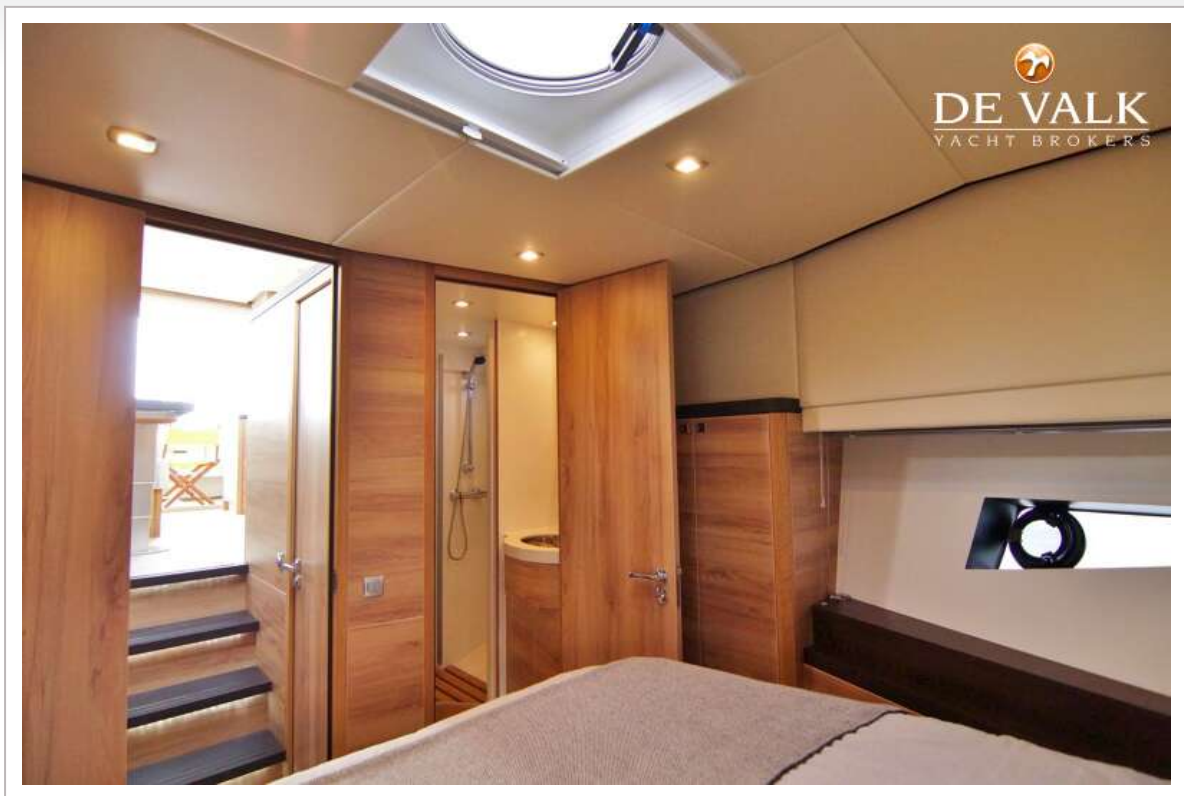


# BOARNCRUISER 1200 ELEGANCE

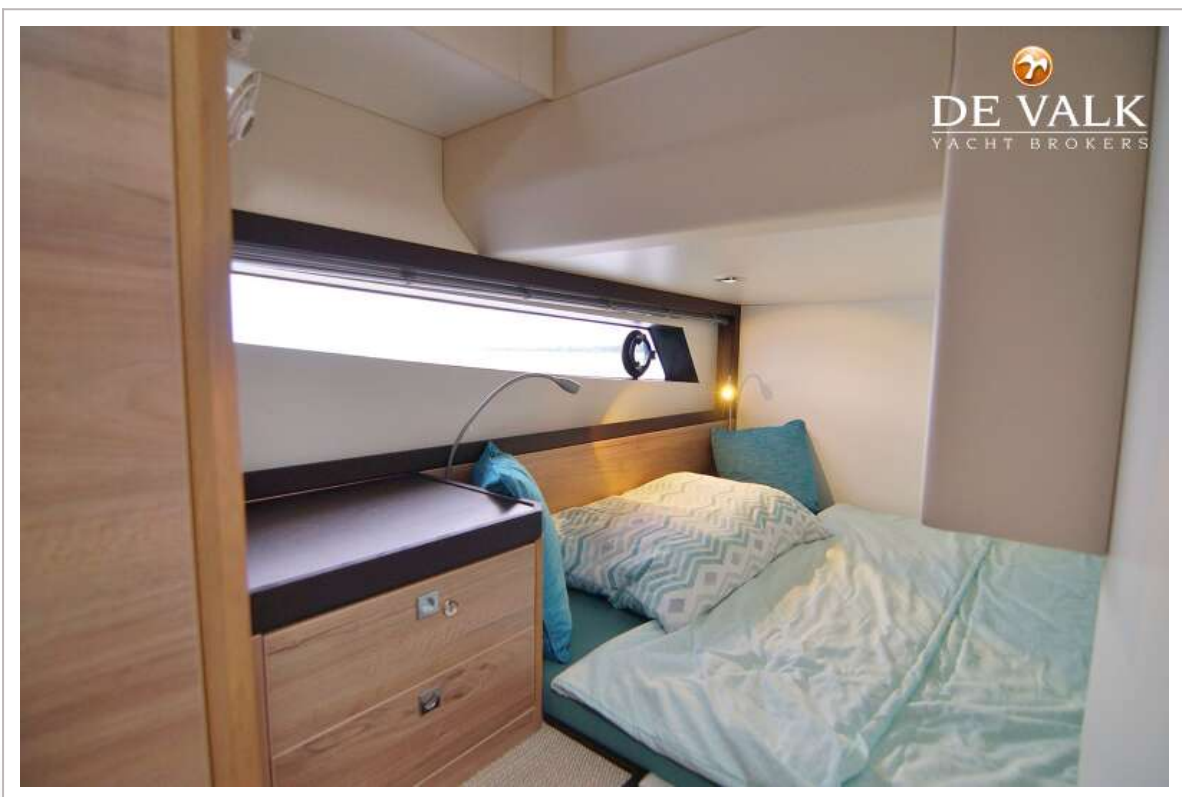




# BOARNCRUISER 1200 ELEGANCE

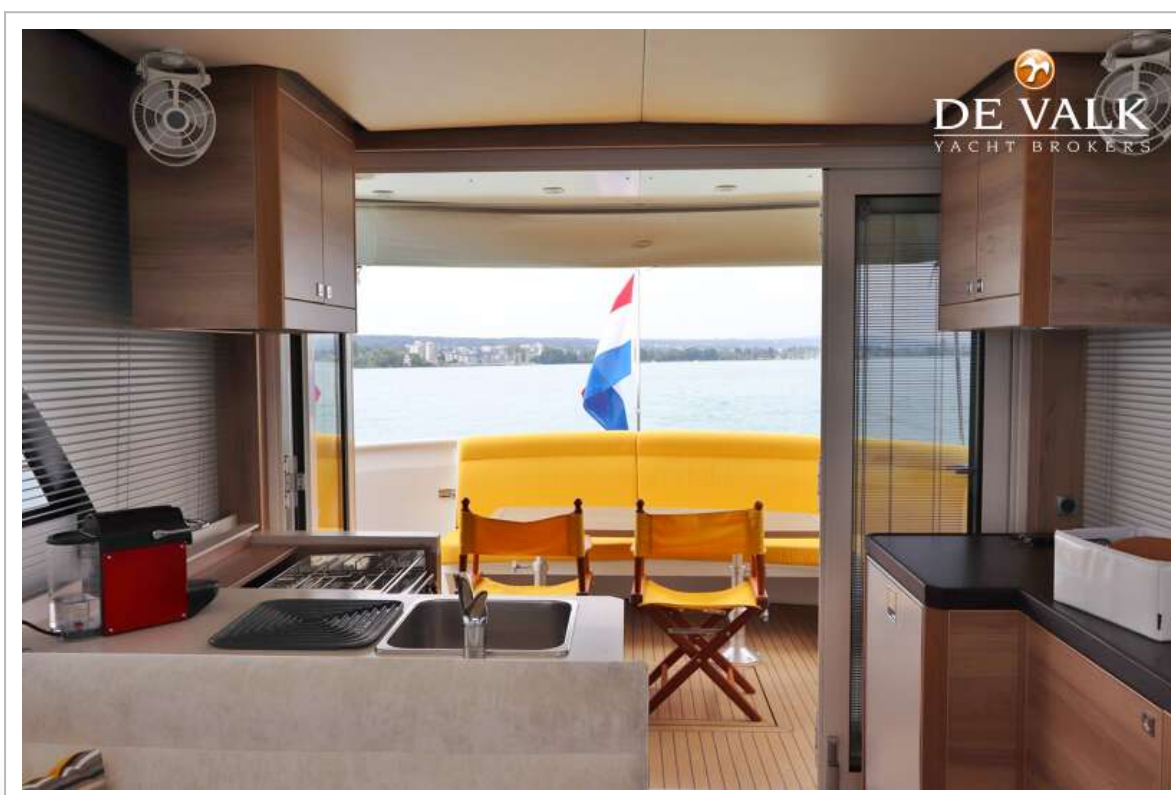
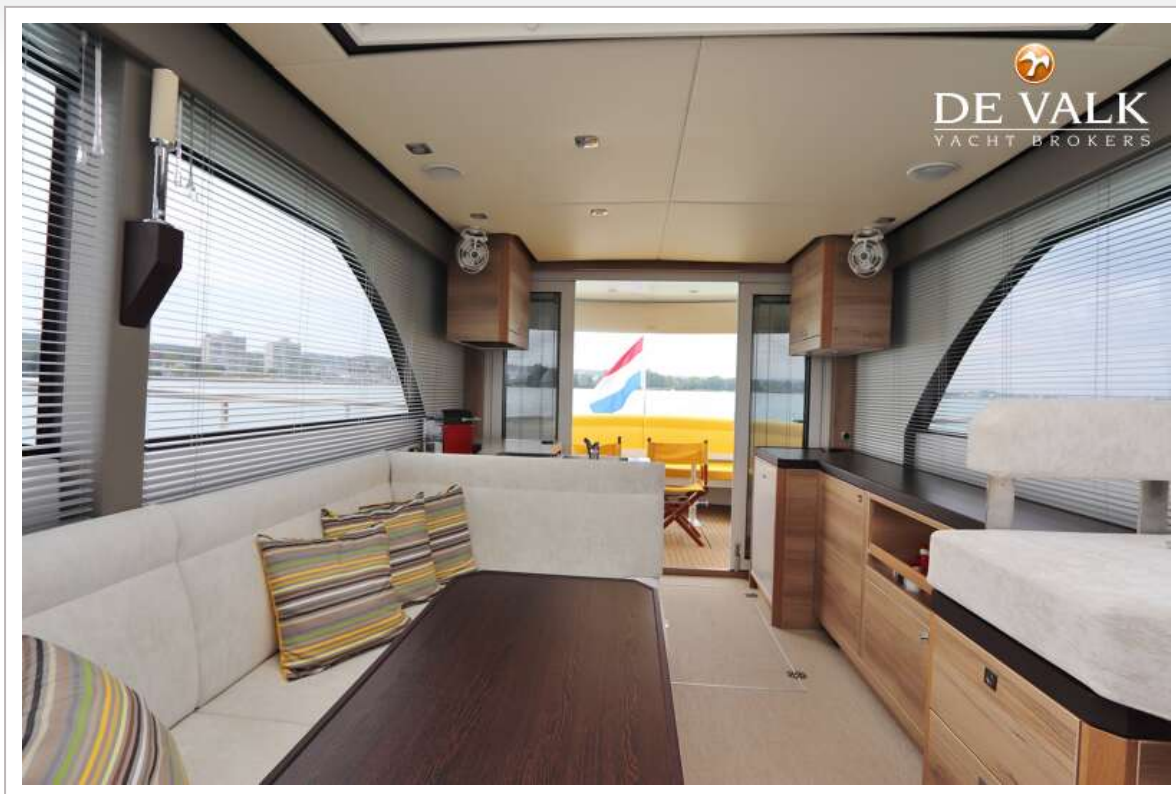


# BOARNCRUISER 1200 ELEGANCE





# BOARNCRUISER 1200 ELEGANCE



# BOARNCRUISER 1200 ELEGANCE

