



DE VALK
YACHT BROKERS



NORDIA 54



DE VALK
YACHT BROKERS

BROKERAGE | CHARTER | BERTHS | FINANCE | INSURANCE | YACHT MANAGEMENT

BROKER'S COMMENTS

Dutch excellent aluminum Nordia 54, designed and built by the world famous shipyard Van Dam. This yard has built up an enormous reputation for first-class yachts of a super quality. With the Balisto keel, which has a shallow draft, the yacht can sail almost anywhere. With the hydraulic rigging, winches, bow thruster, anchor winch etc. this yacht is a pleasure to sail and handle. The navigation equipment has been renewed, the underwater hull is equipped with a modern environmentally friendly and maintenance-free Finsulate anti fouling. Viewing in Medemblik possible with appointment.

Ger Bayens

SPECIFICATIONS

Dimensions	16.40 x 4.62 x 1.80 (m)	Builder	Jachtbouw van Dam
Built	1993	Cabins	3
Material	Aluminium	Berths	8
Engine(s)	1 x Perkins M135 diesel	Hp/Kw	135.00 (hp), 99.22 (kw)
Asking price	sold (VAT)	Lying	elsewhere / Not at sales office

CONTACT

Sales office	De Valk Thuishaven	Telephone	+31 35 5829042
Address	Peperstraat 7 1411 PX Naarden NL	E-mail	thuishaven@devalk.nl

DISCLAIMER

These particulars are given in good faith as supplied but cannot be guaranteed.



GENERAL

Model	NORDIA 54
Type	sailing yacht
LOA (m)	16,40
LWL (m)	13,80
Beam (m)	4,62
Draft (m)	1,80
Air draft (m)	22,00
Headroom (m)	2,15
Year built	1993
Builder	Jachtbouw van Dam
Country	The Netherlands
Designer	Van Dam
Displacement (t)	19
Ballast (tonnes)	lead 8
CE norm	NA
Hull material	aluminium
Hull colour	white
Hull shape	round-bilged
Keel type	fin keel Balisto
Superstructure material	aluminium
Rubbing strake	aluminum
Deck material	aluminium
Deck finish	teak
Superstructure deck finish	paint
Cockpit deck finish	teak
Antifouling (year)	Finsulate (2020)
Dorades	stainless steel
Window frame	aluminium
Window material	tempered glass
Deckhatch	yes



Portholes	aluminium
Insulation	glasswool
Radar arch	non collapsible
Fuel tank (litre)	aluminium 1000
Level indicator (fuel tank)	yes
Freshwater tank (litre)	aluminium 1100
Level indicator (freshwater)	yes
Blackwater tank (litre)	stainless steel 150
Blackwater tank extraction	deck extraction + uw line
Greywater tank (litre)	
Wheel steering	rack & pinion Whitlock
Emergency tiller	yes
More info on paintwork	needs some paintwork Awlgripp 2010
Extra info	The Ballisto shallow draft keel is welded into the hull and a part of the hull construction. The lead ballast is cast inside the alum. casing.

ACCOMMODATION

Cabins	3
Berths	8
Interior	American Rosewood
Layout	two front cabins, saloon, galley, owner aft cabin 2x head/showers
Floor	teak and holly
Aft deck	yes
Doghouse	yes
Saloon	yes
Headroom saloon (m)	2,15
Heating	diesel ducted hot air Webasto
Navigation center	yes
Chart table	yes
Aft Cabin	yes



Dinette	yes
Convertible berth	in both front cabins, one berth can be widened for two people
Galley	1,87mtr. headroom
Countertop	plastic
Sink	emaille
Cooker	calor gas ENO 3/flame
Oven	ENO
Fridge	with freezing part (24v)
Freezer	(24v)
Hot water system	220V + engine
Water pressure system	electrical
Manual and/or foot pump	yes
Owners cabin	French bed
Bed length (m)	2,05 x 1,68
Wardrobe	hanging/drawers/shelves
Bathroom	en suite
Toilet	en suite
Toilet system	manual Rheinstrom
Wash basin	in the bathroom
Shower	separate
Guest cabin 1	bunk bed
Bed length (m)	1,92 x 0,90 / 1,20
Wardrobe	hanging and drawers
Bathroom	shared
Toilet	shared
Toilet system	manual Rheinstrom
Wash basin	in the bathroom
Shower	separate
Guest cabin 2	bunk bed
Wardrobe	hanging and drawers
Bathroom	shared
Toilet	shared



Toilet system	manual Rheinstrom
Wash basin	in the bathroom
Shower	separate
Washing machine	Bosch

MACHINERY

No of engines	1
Make	Perkins
Type	M135
HP	135
kW	99,22
Fuel	diesel
Year installed	1993
Maximum speed (kn)	8,5
Cruising speed (kn)	7
Consumption (l/hr)	6,5
Engine hours	3122
Engine cooling system	freshwater heat exchanger
Drive	shaft
Engine controls	bowden cable
Gearbox	hydraulic
Bowthruster	hydraulic Hydromat
Exhaust	watercooled
Propeller type	fixed
Propeller blades	3
Propeller shaft material	stainless steel
Shaft lubrication	oilbath
Manual bilge pump	yes
Electric bilge pump	yes
Electrical installation	12/24/230V
Generator	wet exhaust ONAN 6,5 MOKOP



Running hours generator	348
Batteries	7
Start battery	2 x (2020)
Service battery	4 x 190ah (2020)
Generator battery	1x
Battery monitor	yes
Battery charger	Victron Skylla 24v/50
Inverter	Mastervolt 24v/500watt
Wind generator	2x D400 (2016)
Shorepower	with cable
Insulation transformer	yes
Watermaker	to be checked Sea Recovery

NAVIGATION

Compass	Ritchie
Electric compass	at autopilot
Multi control display	Autohelm ST50
Depth sounder/log	Raymarine i60 (2020)
Windset	wind & close hauled wind Raymarine i60 (2020)
Repeater	at chart table Autohelm ST 50
VHF	Simrad (2020)
VHF handheld	Simrad (2020)
Autopilot	with remote control Simrad AP28
Rudder angle indicator	at the autopilot
Radar	Furuno
Plotter/GPS	Raymarine AXIOM (2020)
Electronic chart(s)	Navionics
AIS transceiver	Raymarine (2020)
EPIRB	ACR (2019)

EQUIPMENT



Fixed windscreen	yes
Dodger	yes
Sun awning	yes
Winter cover	yes
Cockpit cushions	yes
Cockpit table	yes
Bathing platform	yes
Boarding ladder	stainless steel
Gangway	yes
Deck shower	yes
Anchor	CQR Plough 35 Kg
Anchor chain	80 mtr
Anchor 2	
Windlass	hydraulic Lewmar
Capstan	yes
Deck wash	yes
Outboard support	yes
Davits	stainless steel
Davits controls	manual
Sea railing	wire
Grab rail (superstructure)	wood
Railing side opening gates	2x
Pushpit	yes
Pulpit	yes
Life raft (pers)	container 6
Lifebuoy	yes
Wiper	yes
Horn	
Fenders	yes
Mooring lines	yes
Radio-cd player	JVC
Cockpit speakers	yes



Speakers in salon	yes
Clock - barometer	yes
Fire extinguisher	5

RIGGING

Rigging	sloop
Standing rigging	wire
Brand mast	Proctor
Material mast	aluminium
Spreaders	2 sets
Mainsail	+ older usable mainsail SuperSailStore (2020)
Stoway mast	yes
Genoa	+ older genoa (2016)
Genoa furler	hydraulic furler Reckmann
Spinnaker	Parasail (2016)
Booster	yes
Staysail	with hanks for cutter stay
Reefing System	main in-mast furling
Backstay adjuster	hydraulic Navtec
Boomvang	mechanical Proctor
Primary sheet winch	hydraulic 2 x 56CST Lewmar
Secondary sheet winch	2 x 46CST Lewmar
Halyard winches	2 x 43CST Lewmar
Spi-pole	aluminium



NORDIA 54

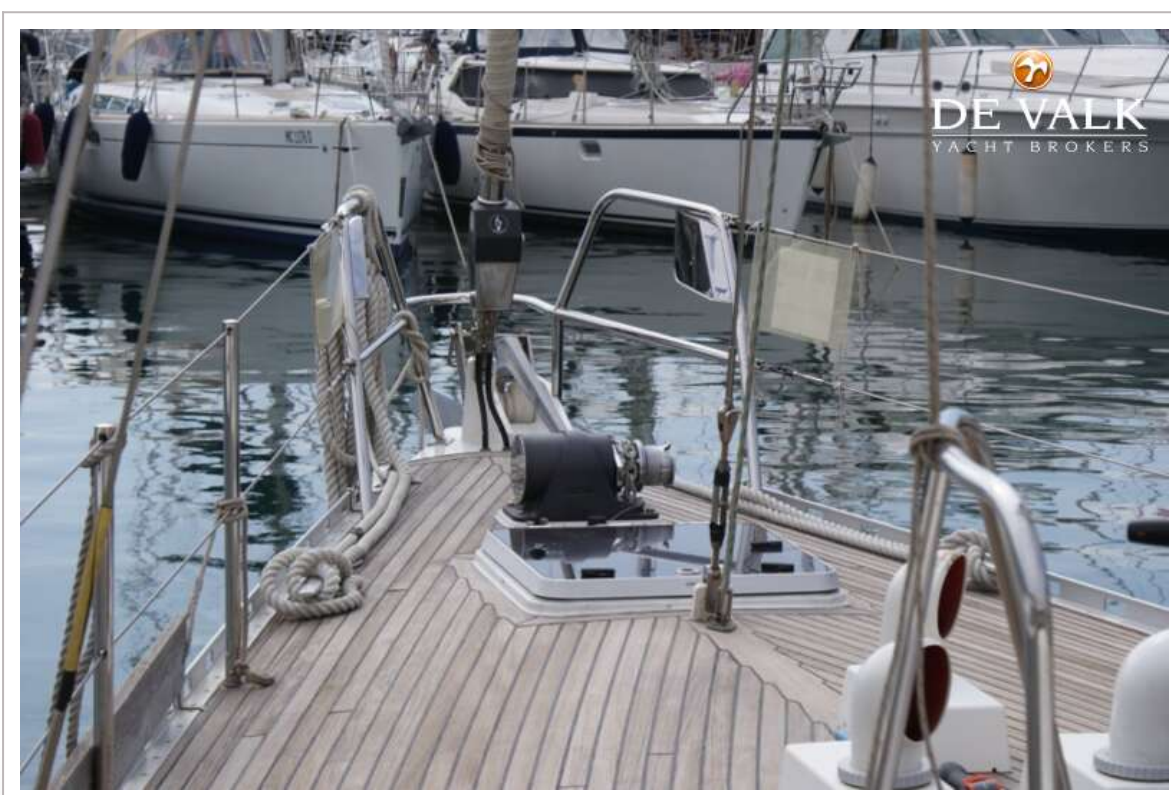
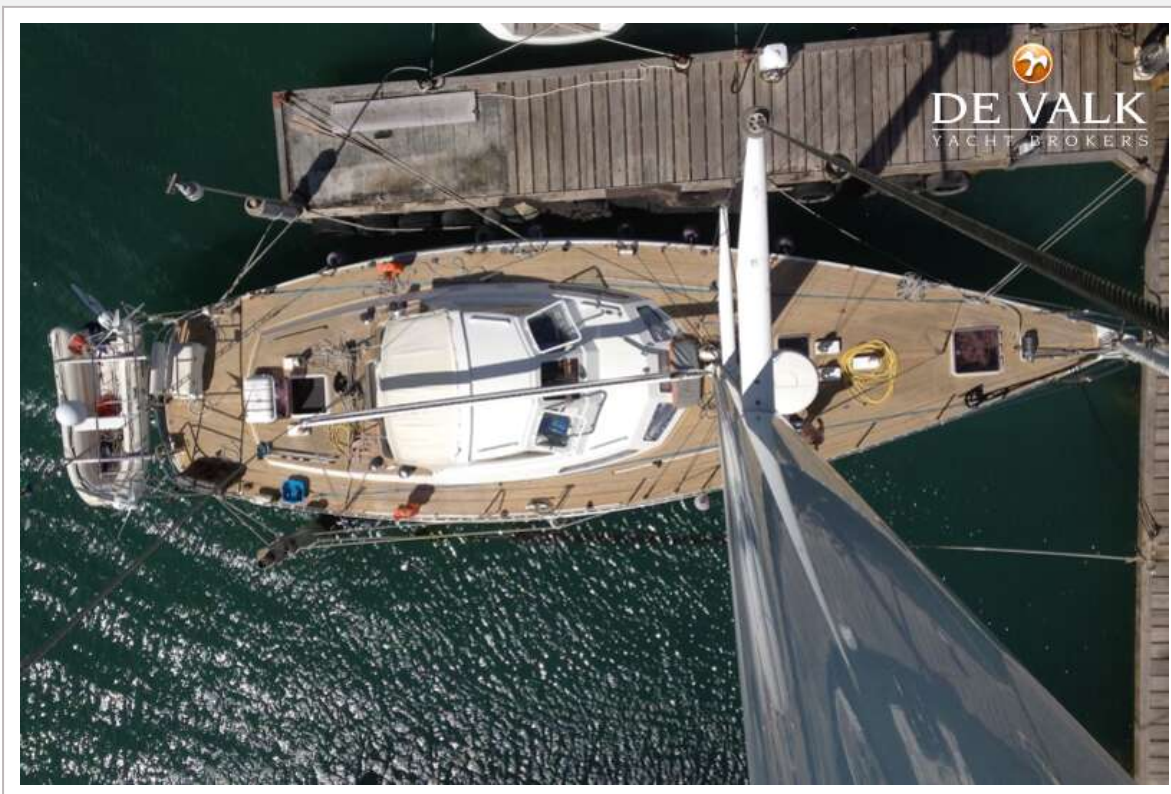


NORDIA 54





NORDIA 54

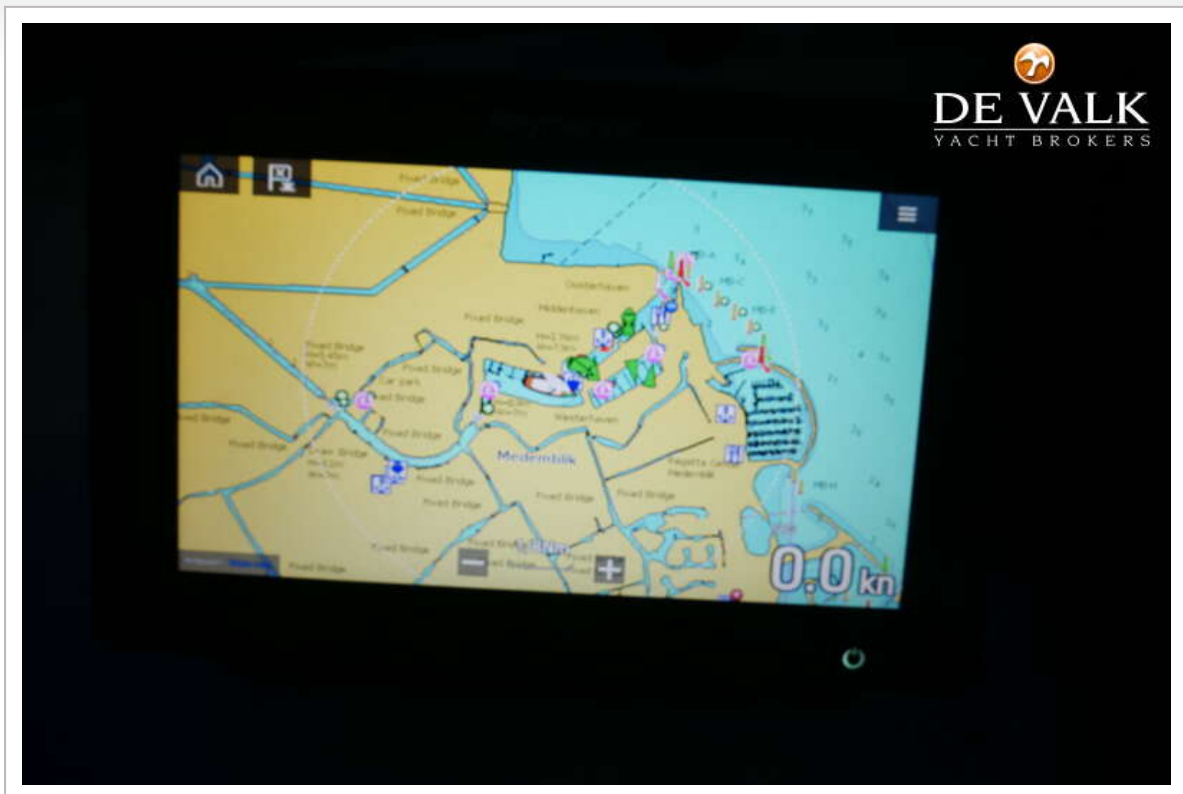


NORDIA 54





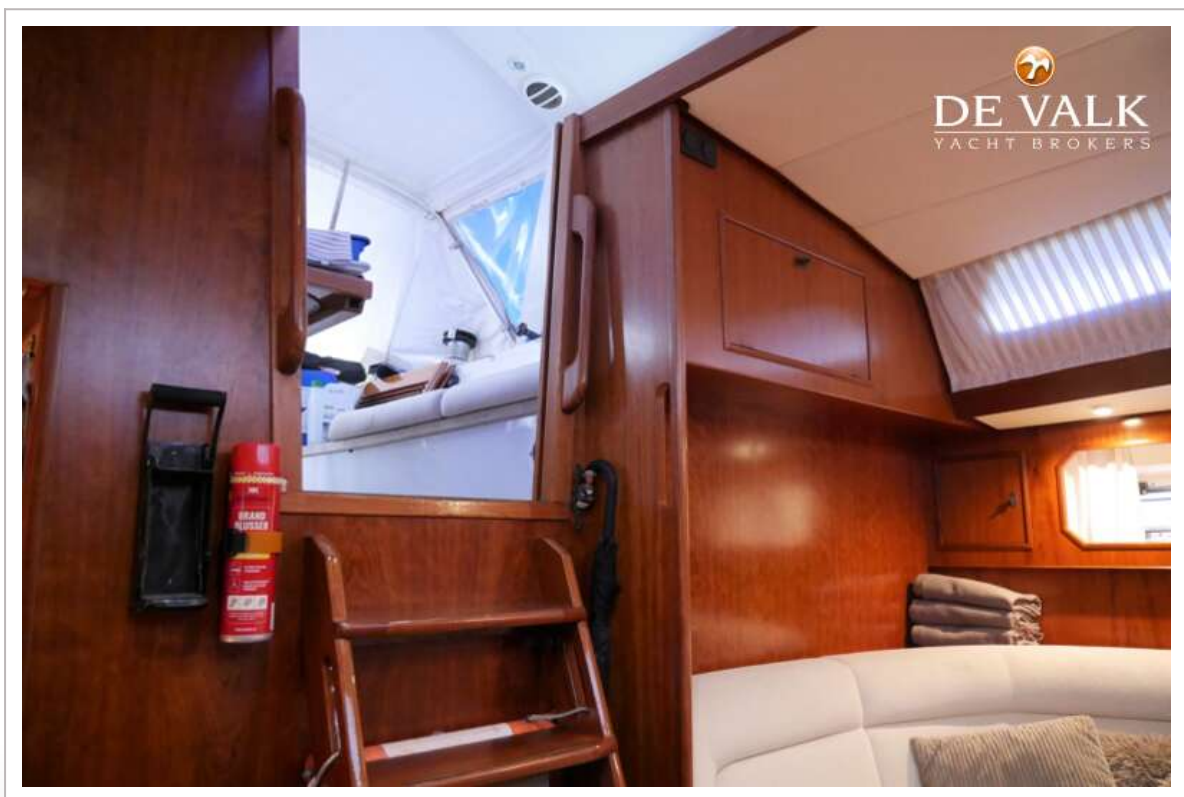
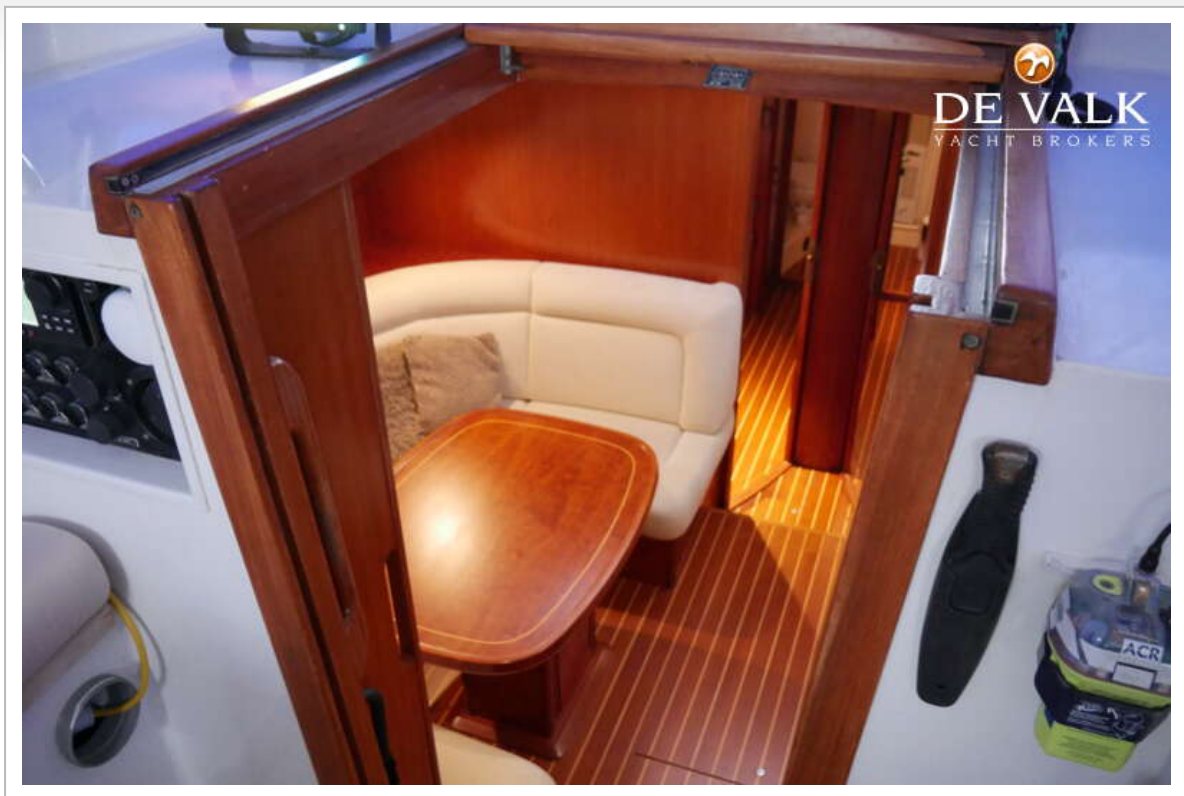




NORDIA 54

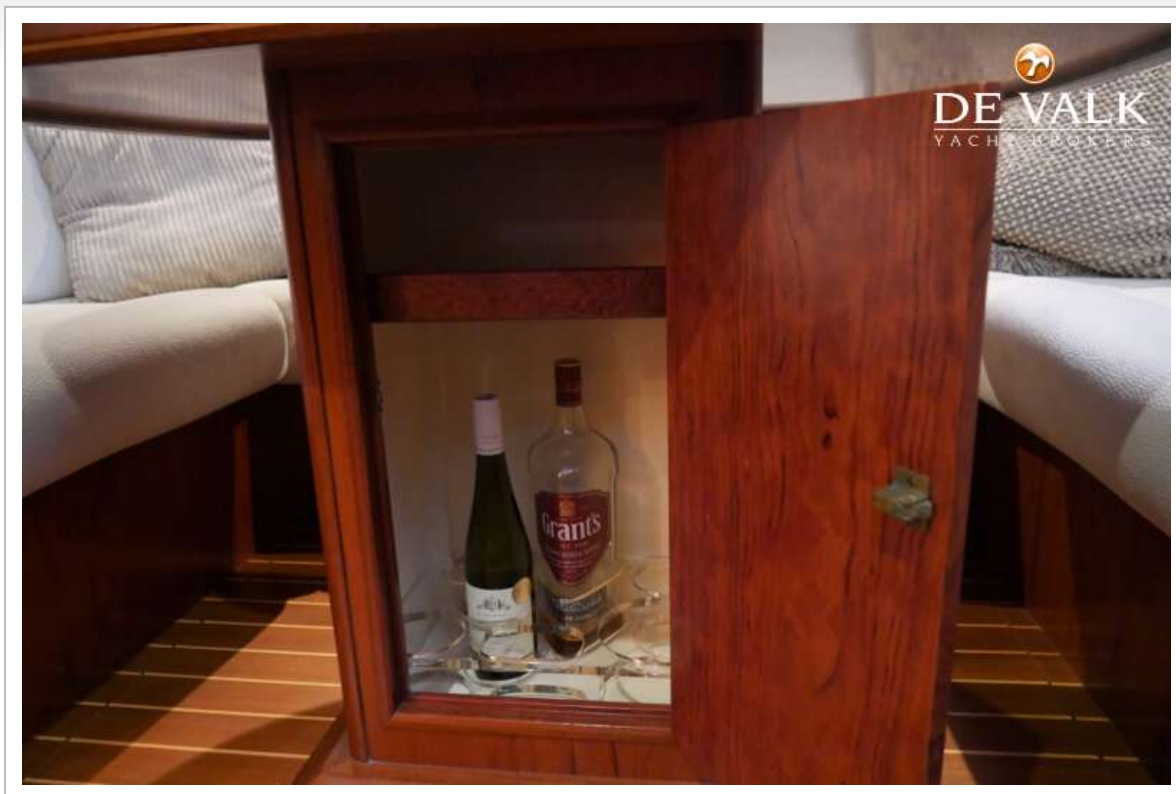


NORDIA 54

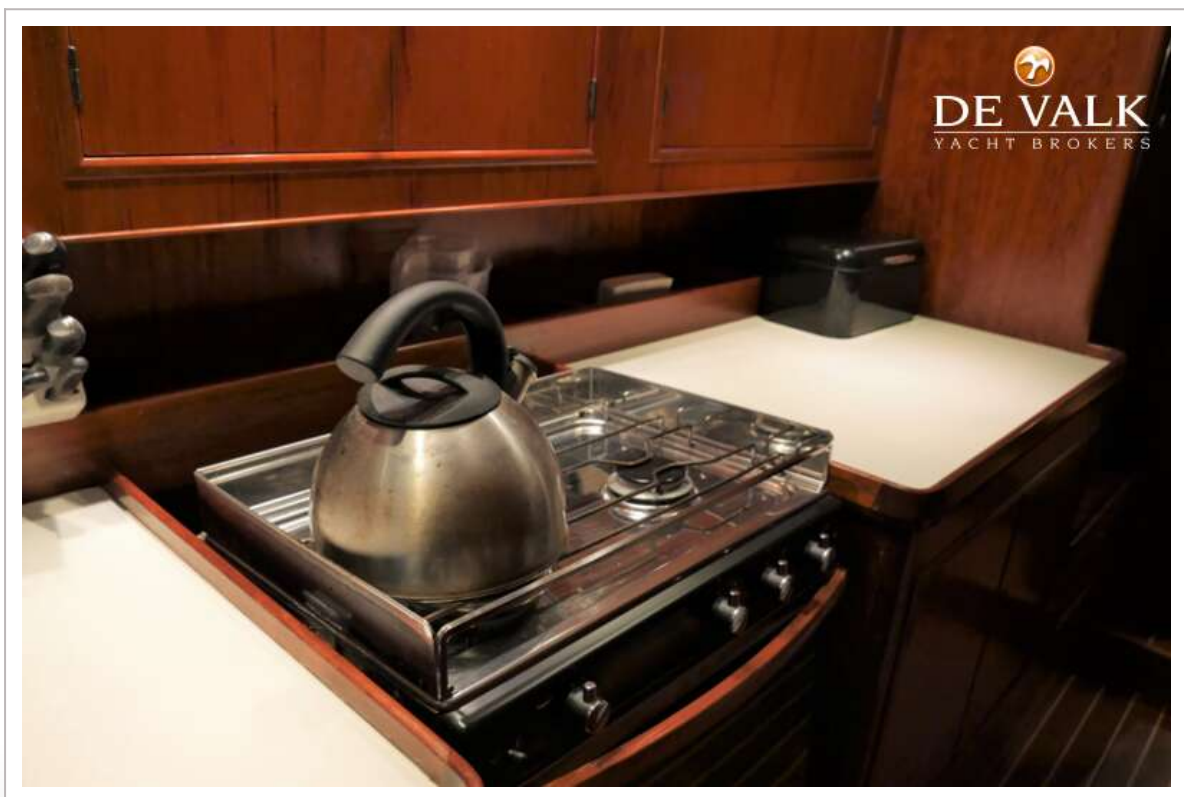


NORDIA 54



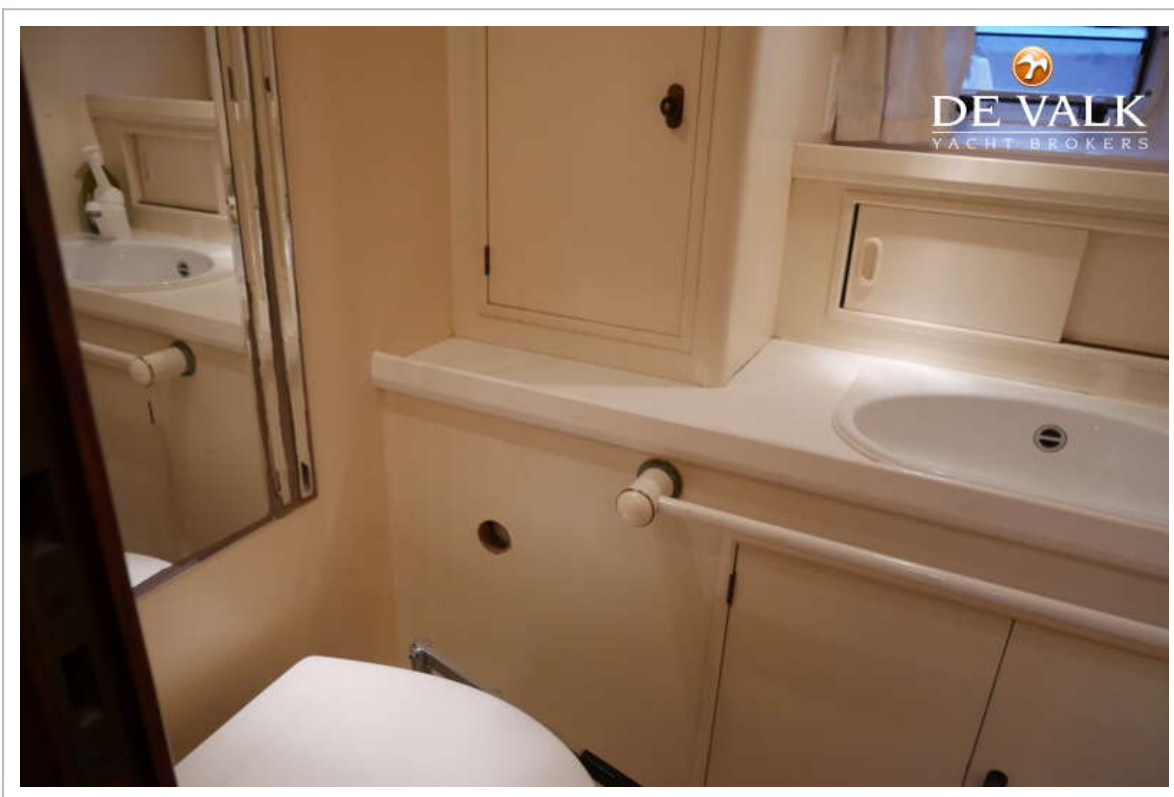


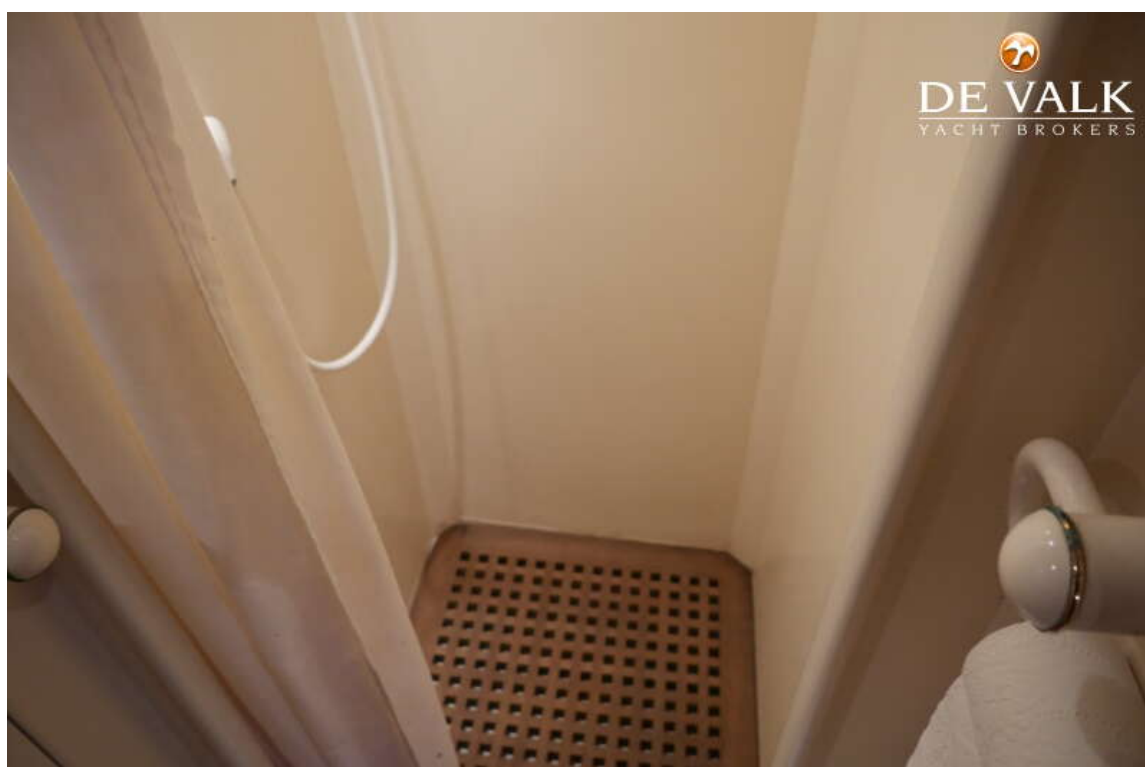
NORDIA 54



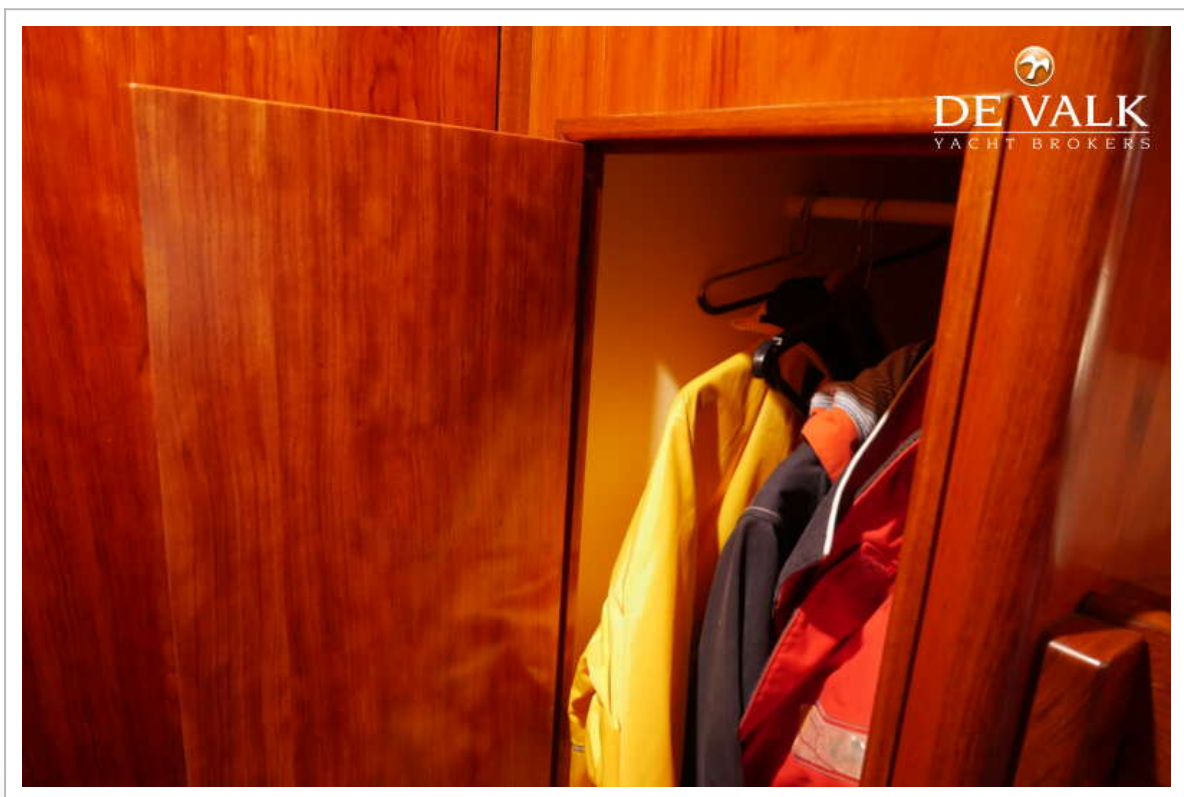
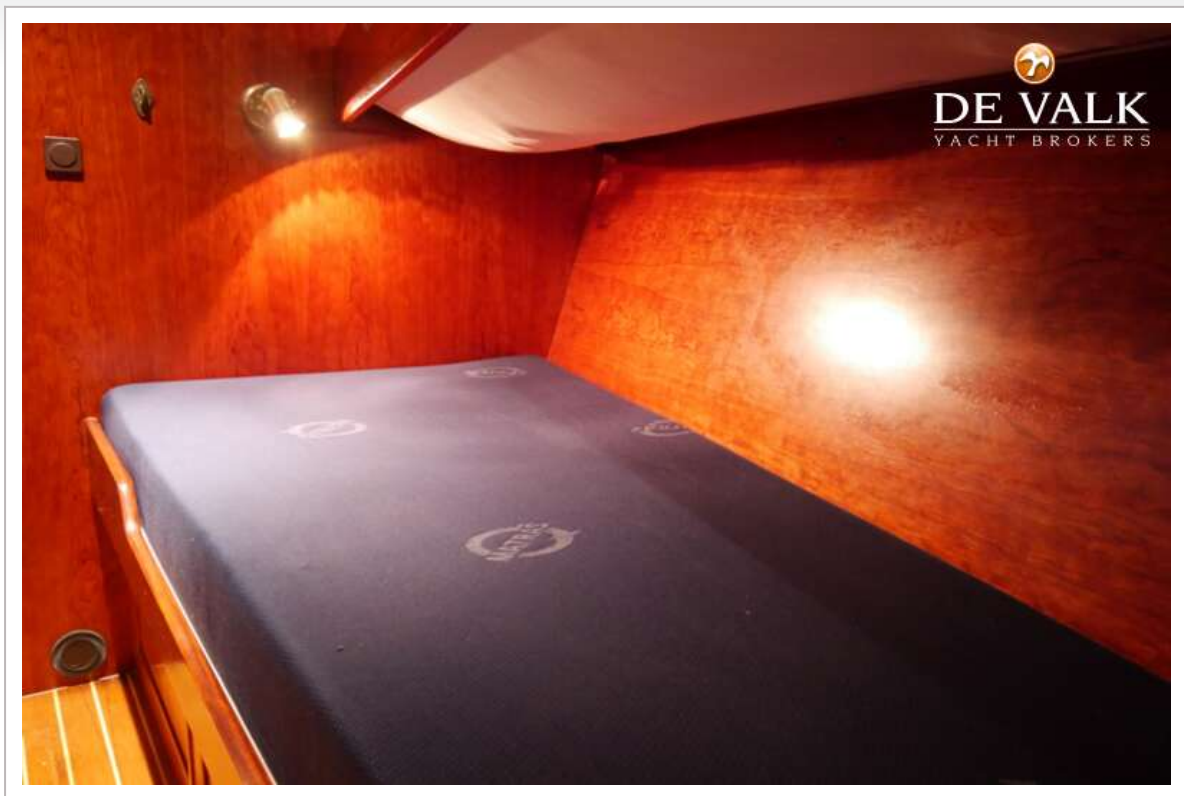
NORDIA 54

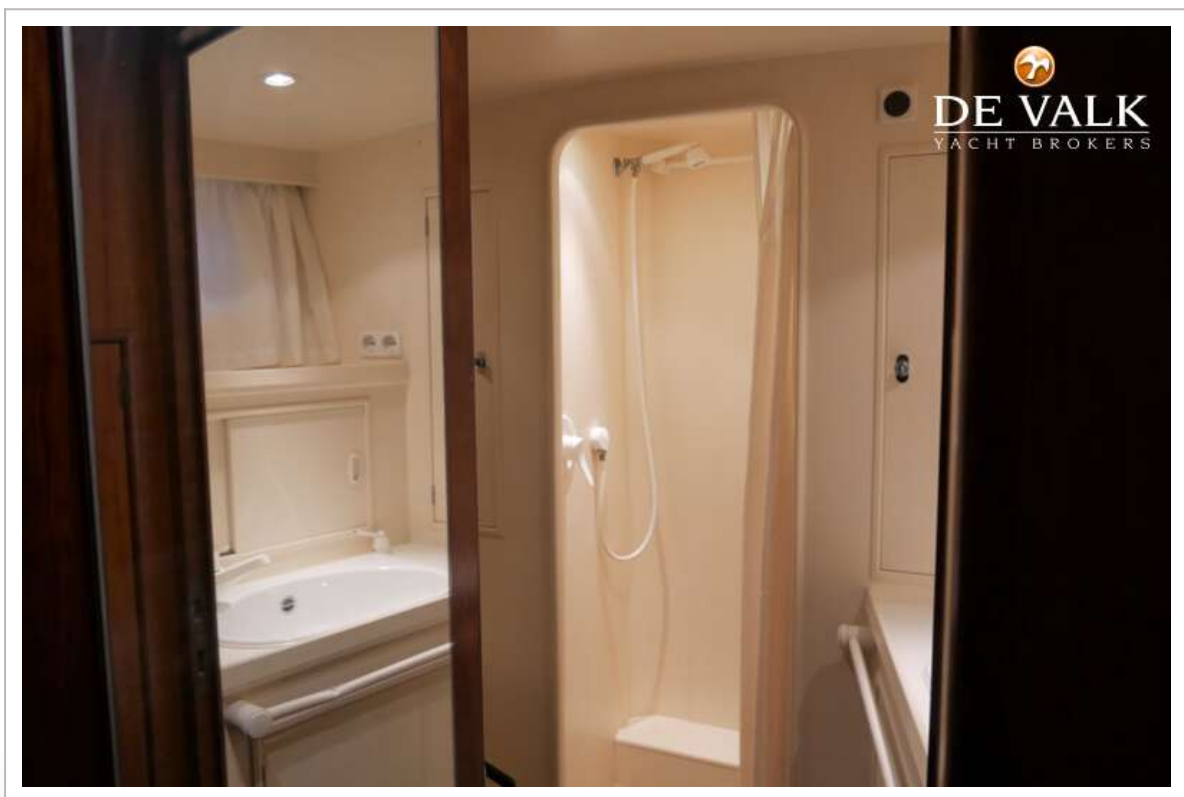
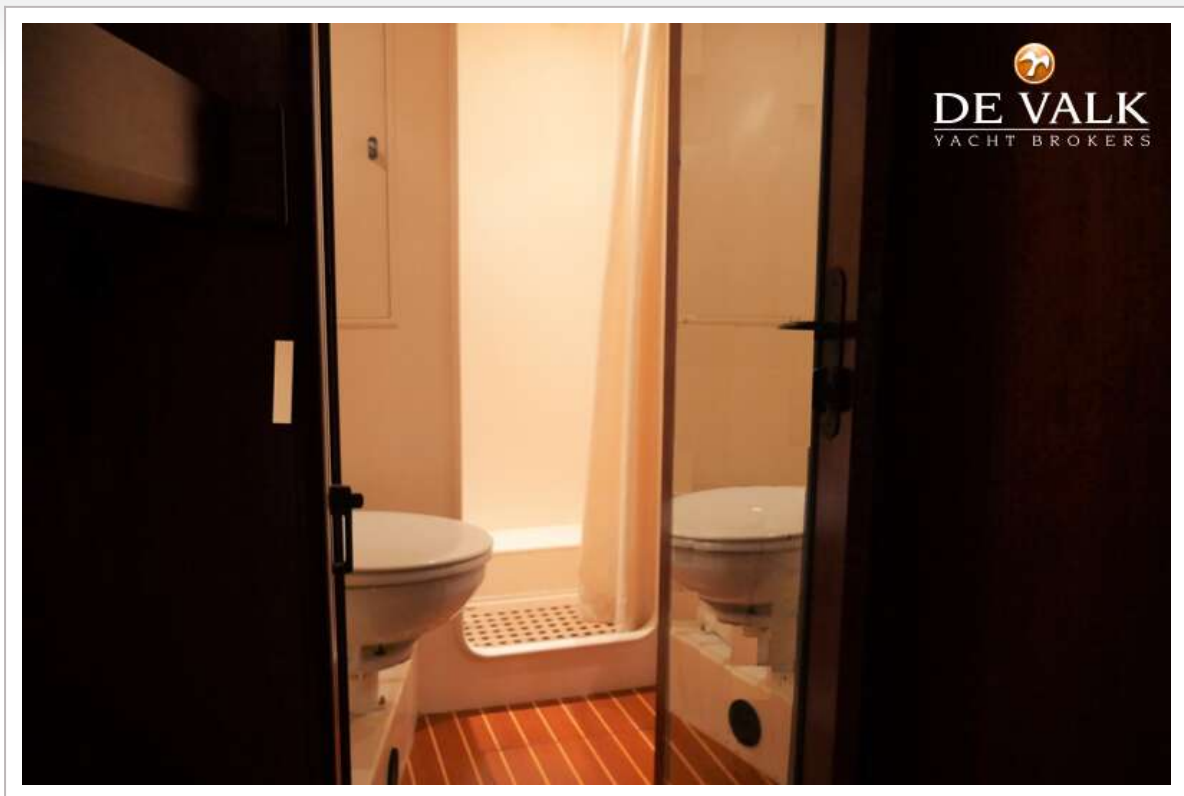




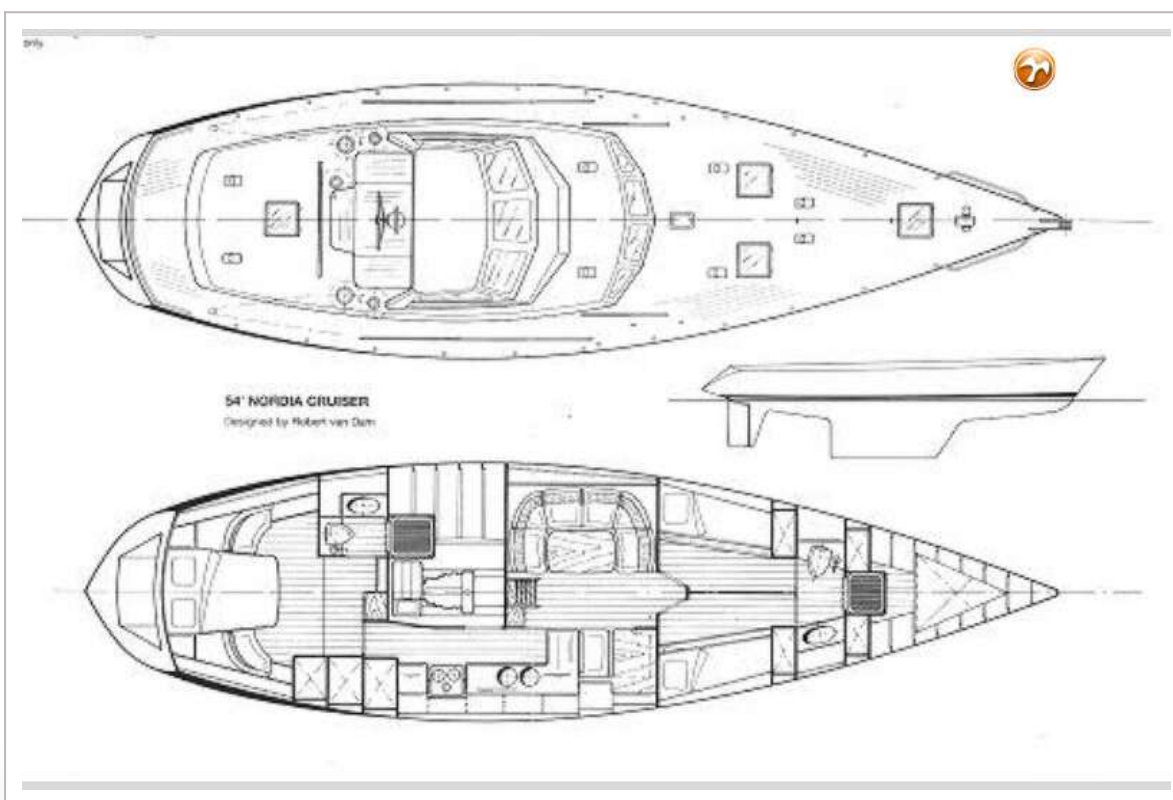
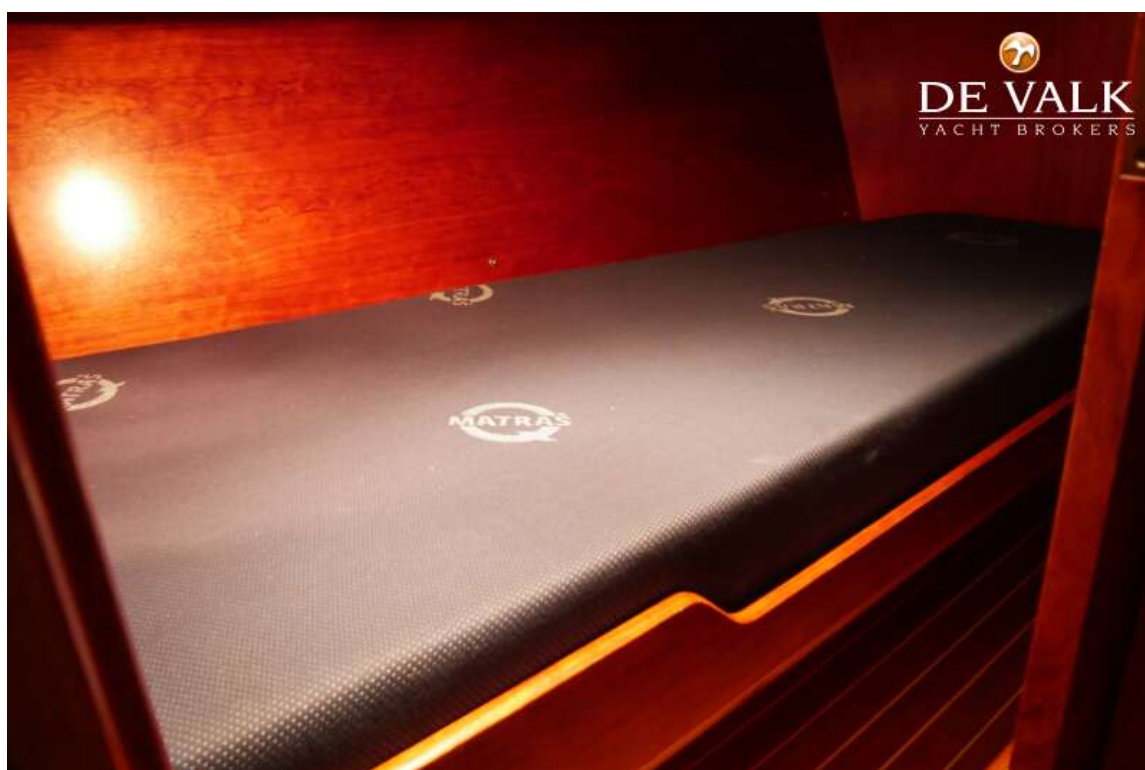


NORDIA 54





NORDIA 54



NORDIA 54





