



DE VALK
YACHT BROKERS



KOOPMANS 46



DE VALK
YACHT BROKERS

BROKERAGE | CHARTER | BERTHS | FINANCE | INSURANCE | YACHT MANAGEMENT

BROKER'S COMMENTS

Dick Koopmans Sr., probably the most recognized yacht designer from the Netherlands, has also been at the basis of this beautiful aluminum yacht. As always, this yacht also excels in seaworthiness, speed and safety. With the necessary comfort and the good layout, it is extremely suitable for longer journeys. This Koopmans with its famous line and practical sailing characteristics, is located here at our office in Hindeloopen and is ready for your inspection!

Henri van Eelen

SPECIFICATIONS

Dimensions	13.75 x 3.96 x 1.30 (m)	Builder	Folmer/ Pronk/ Gebr van Enkhuizen
Built	1999	Cabins	2
Material	Aluminium	Berths	6
Engine(s)	1 x Yanmar diesel	Hp/Kw	56.00 (hp), 41.16 (kw)
Asking price	sold (VAT)	Lying	at sales office

CONTACT

Sales office	De Valk Hindeloopen B.V.	Telephone	+31 514 52 40 00
Address	Oosterstrand 1 8713 JS Hindeloopen NL	E-mail	hindeloopen@devalk.nl

DISCLAIMER

These particulars are given in good faith as supplied but cannot be guaranteed.



GENERAL

Model	KOOPMANS 46
Type	sailing yacht
LOA (m)	13,75
Beam (m)	3,96
Draft (m)	1,30
Year built	1999
Builder	Folmer/ Pronk/ Gebr van Enkhuizen
Country	The Netherlands
Designer	Koopmans
Displacement (t)	15
Hull material	aluminium
Hull shape	S-bilged
Keel type	centreboard
Superstructure material	yes
Deck material	aluminium
Deck finish	cork
Superstructure deck finish	paint
Cockpit deck finish	teak
Antifouling (year)	2018
Dorades	2x
Window frame	aluminium
Window material	tempered glass
Insulation	foam
Fuel tank (litre)	aluminium
Freshwater tank (litre)	aluminium
Blackwater tank (litre)	60L
Blackwater tank extraction	deck extraction
Wheel steering	rack & pinion
Emergency tiller	yes



ACCOMMODATION

Cabins	2
Berths	6
Interior	mahogany
Floor	parquet Parket/ mahogany
Saloon	yes
Headroom saloon (m)	yes
Heating	central heating
Chart table	yes
Dinette	yes
Dinette to convert into berth	yes
Galley	yes
Countertop	plastic Hout/ kunststof
Sink	stainless steel
Cooker	electric Rommelsbacher Topline 2000
Microwave/oven combi	Whirlpool
Fridge	Met vriesvak
Hot water system	220V + engine CV
Water pressure system	electrical
Owners cabin	v-bed
Bed length (m)	2m
Wardrobe	shelves
Bathroom	shared
Toilet	shared
Toilet system	electric RM 69
Wash basin	in the bathroom
Shower	shared
Guest cabin 1	v-bed
Bed length (m)	2m
Wardrobe	hanging and drawers
Bathroom	shared



Toilet	shared
Toilet system	electric
Wash basin	in the bathroom
Shower	shared

MACHINERY

No of engines	1
Make	Yanmar
HP	56
kW	41,16
Fuel	diesel
Year installed	2001
Maximum speed (kn)	8
Engine hours	1231
Engine cooling system	seawater
Drive	shaft
Engine controls	bowden cable
Gearbox	mechanical
Bowthruster	Sidepower
Propeller blades	3x
Manual bilge pump	yes
Electric bilge pump	yes
Electrical installation	Mastervolt 24/ 75 extra dynamo op motor
Generator	wet exhaust
Batteries	5x
Service battery	Mastervolt 4x 220 Ah
Generator battery	Mastervolt 1x 70 Ah
Battery monitor	yes
Battery charger	Mastervolt Mass 24/ 75
Inverter	Mastervolt Mass 24/ 2500
Shorepower	with cable



Insulation transformer

yes

NAVIGATION

Compass

Whilock

Depth sounder

Raymarine ST60

Log

Raymarine ST60

Windset

Raymarine ST60

Repeater

Raymarine ST60 Multi binnen

VHF

yes

Autopilot

Raymarine ST6000

Rudder angle indicator

VETUS

Radar

RX40 display met antenne op paal

Plotter/GPS

Raymarine RC435I binnen

Radio receiver

yes

Searchlight

Hand

EQUIPMENT

Fixed windscreen

yes

Sprayhood

yes

Cockpit cushions

yes

Cockpit table

yes

Boarding ladder

stainless steel

Anchor

Delta

Anchor chain

40m

Windlass

electrical

Capstan

yes

Deck wash

yes

Sea railing

wire

Grab rail (superstructure)

yes

Lifejackets

yes

Wiper

yes



Horn	electric
Fenders	yes
Mooring lines	yes
Tools	yes
Radio-cd player	Philips
Speakers in salon	Philips
Clock - barometer	2x

RIGGING

Rigging	cutter
Standing rigging	wire
Brand mast	yes
Material mast	aluminium
Mainsail	Quantum 2002
Mainsail cover	yes
Jib	Quantum 2002
Genoa	Quantum 2002
Genoa furler	Furlex
Genoa cover	yes
Spinnaker	Quantum 2002
Reefing System	Dutchmann
Boomvang	tackle
Primary sheet winch	Lewmar 2x
Secondary sheet winch	Lewmar 2x
Halyard winches	Lewmar 2x
Multifunctional winches	yes
Winchcovers	yes
Spi-pole	aluminium
Gennaker pole	aluminium
Extra info	Mast diamant verstaging



















KOOPMANS 46

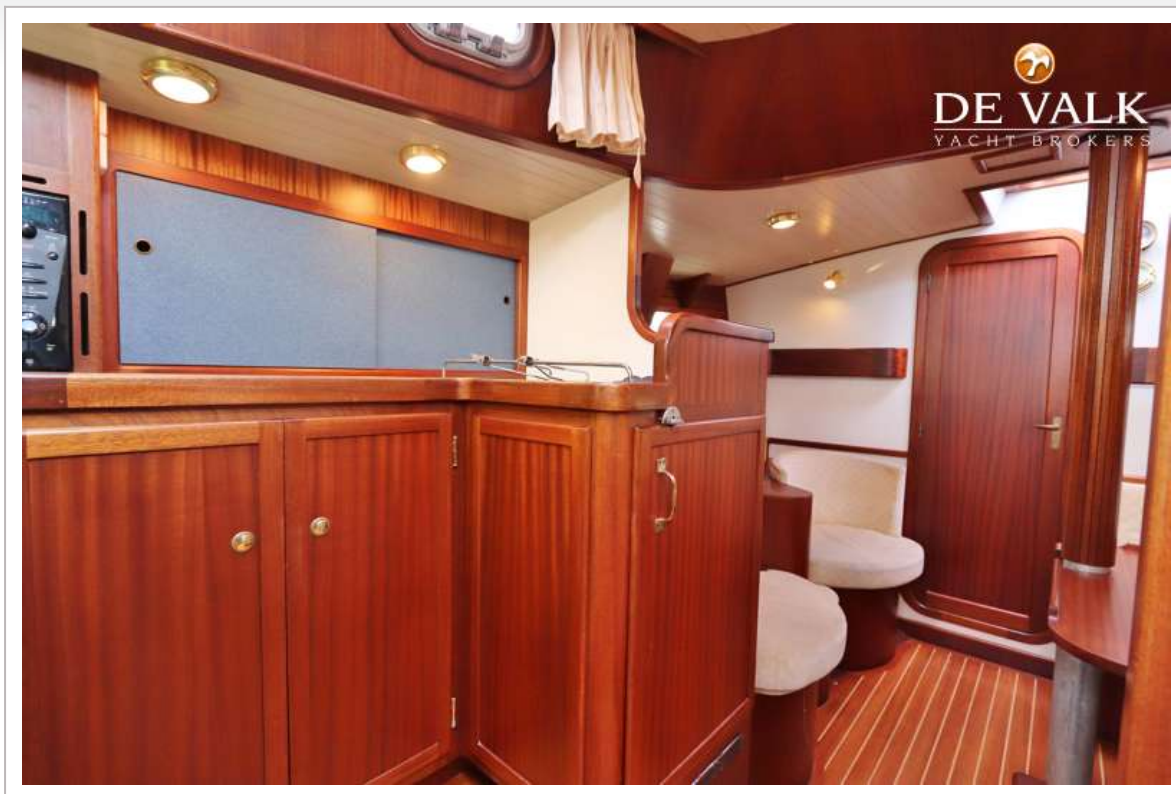


KOOPMANS 46



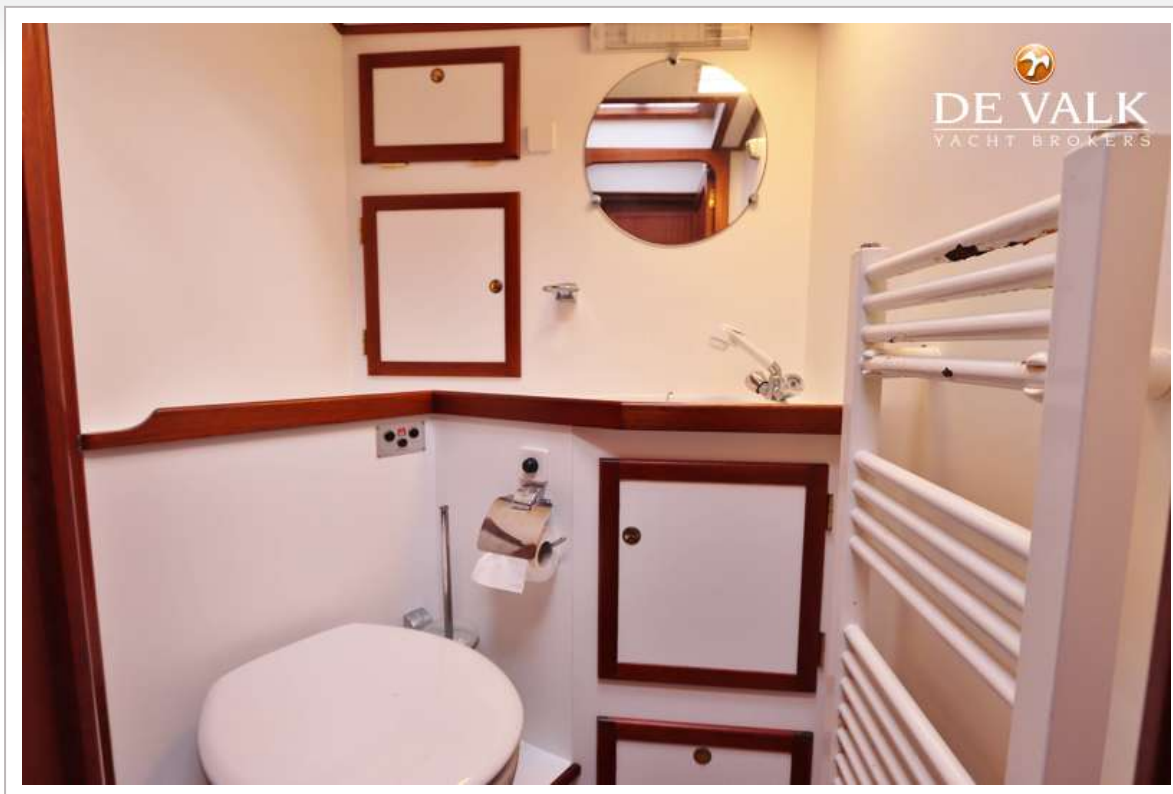






KOOPMANS 46





KOOPMANS 46



KOOPMANS 46

