



DE VALK
YACHT BROKERS



BAVARIA 44



DE VALK
YACHT BROKERS

BROKER'S COMMENTS

Popular Bavaria 44 Cruiser from Bavaria Germany. Nice interior with three large cabins. Excellent headroom with 2 mtr. throughout. Comes fully equipped with good navigational instruments. Also fitted bowthruster, electric windlass and electric sheet winches which makes her very easy to handle for anyone who wants to enjoy sailing to the fullest. Owner cabin forward has a centreline double berth, never chartered. Now to be admired and inspected 7 days a week in Hindeloopen.

Johan Nooitgedagt

SPECIFICATIONS

Dimensions	13.95 x 4.25 x 1.95 (m)	Builder	Bavaria Yachts Giebelstadt
Built	2002	Cabins	3
Material	GRP	Berths	7
Engine(s)	1 x Volvo Penta D2-55 diesel	Hp/Kw	55.00 (hp), 40.00 (kw)
Asking price	sold (VAT)	Lying	at sales office

CONTACT

Sales office	De Valk Hindeloopen B.V.	Telephone	+31 514 52 40 00
Address	Oosterstrand 1 8713 JS Hindeloopen NL	E-mail	hindeloopen@devalk.nl

DISCLAIMER

These particulars are given in good faith as supplied but cannot be guaranteed.



GENERAL

Model	BAVARIA 44
Type	sailing yacht
LOA (m)	13,95
Beam (m)	4,25
Draft (m)	1,95
Air draft (m)	18,65
Headroom (m)	2,00
Year built	2002
Launched	2002
Builder	Bavaria Yachts Giebelstadt
Country	Germany
Designer	J & J Design
Displacement (t)	11,9
Ballast (tonnes)	lead in steel 3
CE norm	A
Hull material	GRP
Hull colour	white
Hull shape	round-bilged
Keel type	fin keel
Superstructure material	GRP
Rubbing strake	stainless steel
Deck material	GRP
Deck finish	teak
Superstructure deck finish	non-skid moulded in
Cockpit deck finish	teak
Antifouling (year)	2018
Dorades	yes
Window frame	aluminium
Window material	perspex
Deckhatch	yes



Fuel tank (litre)	polyethylene 210
Level indicator (fuel tank)	yes
Freshwater tank (litre)	polyethylene 1x 210 1x 150
Level indicator (freshwater)	yes
Wheel steering	mechanical
Emergency tiller	yes

ACCOMMODATION

Cabins	3
Berths	7
Interior	mahogany
Layout	yes
Floor	teak and holly
Open cockpit	yes
Headroom saloon (m)	1,95
Heating	diesel ducted hot air Webasto 5kw
Chart table	yes
Aft Cabin	yes
Galley	yes
Countertop	corian
Sink	stainless steel
Cooker	calor gas 3 Burner
Oven	yes
Microwave	Deawoo
Hot water system	220V + engine
Water pressure system	electrical
Owners cabin	French bed
Bed length (m)	2,05
Wardrobe	hanging/drawers/shelves
Bathroom	en suite
Toilet	en suite



Toilet system	manual
Wash basin	at the toilet
Shower	en suite
Guest cabin 1	double bed
Bed length (m)	2,00
Wardrobe	hanging and shelves
Bathroom	shared
Toilet	shared
Toilet system	manual
Wash basin	in the bathroom
Shower	shared
Guest cabin 2	double bed
Bed length (m)	2,00
Wardrobe	hanging and shelves
Bathroom	shared
Toilet	shared
Toilet system	manual
Wash basin	at the toilet
Shower	shared

MACHINERY

No of engines	1
Make	Volvo Penta
Type	D2-55
HP	55
kW	40,00
Fuel	diesel
Year installed	2002
Maximum speed (kn)	8,00
Cruising speed (kn)	6,00
Engine hours	2600



Engine cooling system	freshwater heat exchanger
Drive	sail-drive
Saildrive seal	2019
Engine controls	mechanical
Gearbox	mechanical
Bowthruster	electric
Propeller type	folding
Propeller blades	3
Electric bilge pump	yes
Batteries	yes
Start battery	yes
Service battery	yes
Bowthruster battery	yes
Battery monitor	yes
Battery charger	Victron
Inverter	Victron
Shorepower	with cable
Insulation transformer	Victron

NAVIGATION

Compass	Contest
Depth sounder	Raymarine ST60+
Depth sounder/log	Raymarine ST60+
Log	Raymarine ST60+
Windset	Raymarine ST60+
Repeater	Raymarine ST60+
VHF	Shipmate RS 8300
Autopilot	Raymarine ST6002
Rudder angle indicator	Raymarine ST6002
Radar	Raymarine
Plotter	Raymarine



Plotter/GPS

Raymarine RL70C

EQUIPMENT

Sprayhood	yes
Sprayhood with grab rail	yes
Bimini	yes
Winter cover	yes
Cockpit table	yes
Bathing platform	yes
Boarding ladder	stainless steel
Deck shower	yes
Anchor	CQR Plough
Anchor chain	yes
Windlass	electrical Lofrans
Grab rail (superstructure)	
Railing side opening gates	yes
Pushpit	yes
Pulpit	yes
Life raft	container Autoflug
Life raft (pers)	container 6
Last life raft survey	Needs to be surveyed
Radar reflector	yes
Fenders	yes
Mooring lines	yes
TV	yes
Radio-cd player	JVC
Speakers in salon	yes
Speakers in cabin	yes
Clock - barometer	yes
Fire extinguisher	yes



RIGGING

Rigging	sloop
Standing rigging	wire
Brand mast	Seldén
Material mast	aluminium
Spreaders	2 pair
Mainsail	2013
Stoway mast	yes
Genoa	2013
Genoa furler	Furlex
Reefing System	main in-mast furling
Backstay adjuster	mechanical
Boomvang	mechanical
Primary sheet winch	Lewmar ST40 Manual
Genoa sheetwinches	Lewmar ST48 Electric
Multifunctional winches	halyard/sheet winches
Spi-pole	aluminium





BAVARIA 44



BAVARIA 44



BAVARIA 44



BAVARIA 44





BAVARIA 44



BAVARIA 44







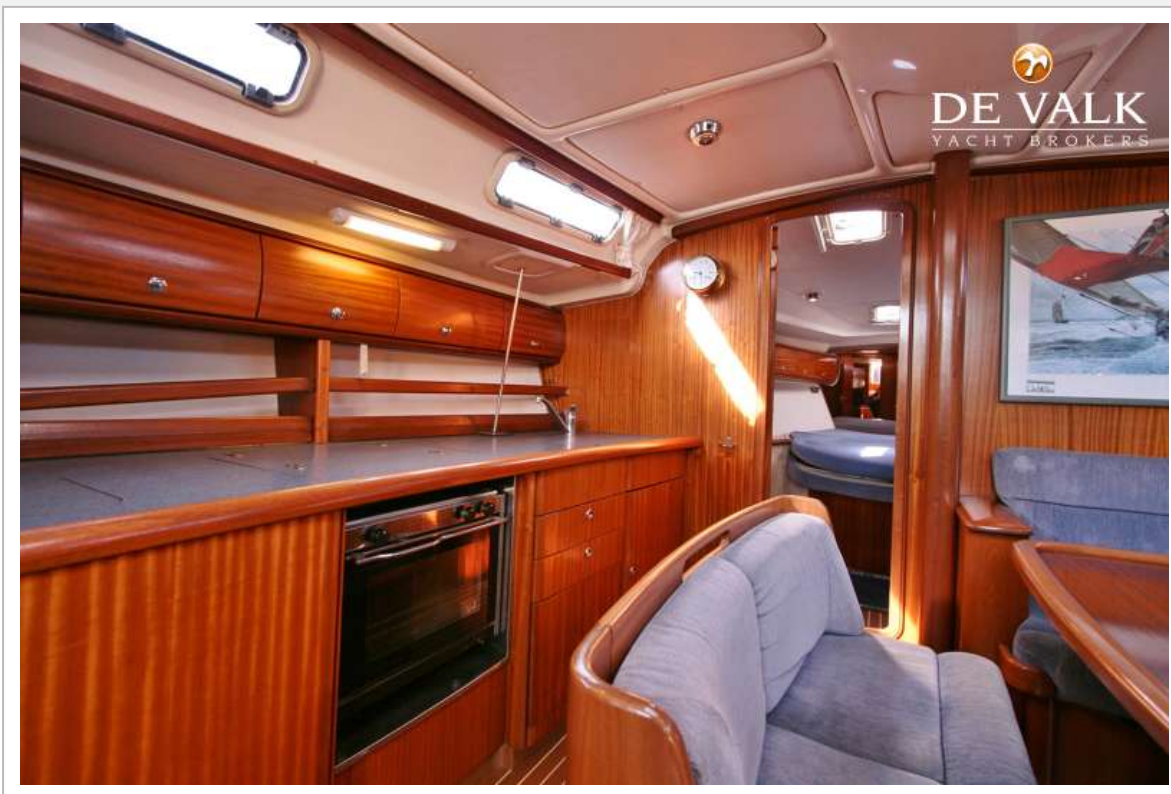
BAVARIA 44



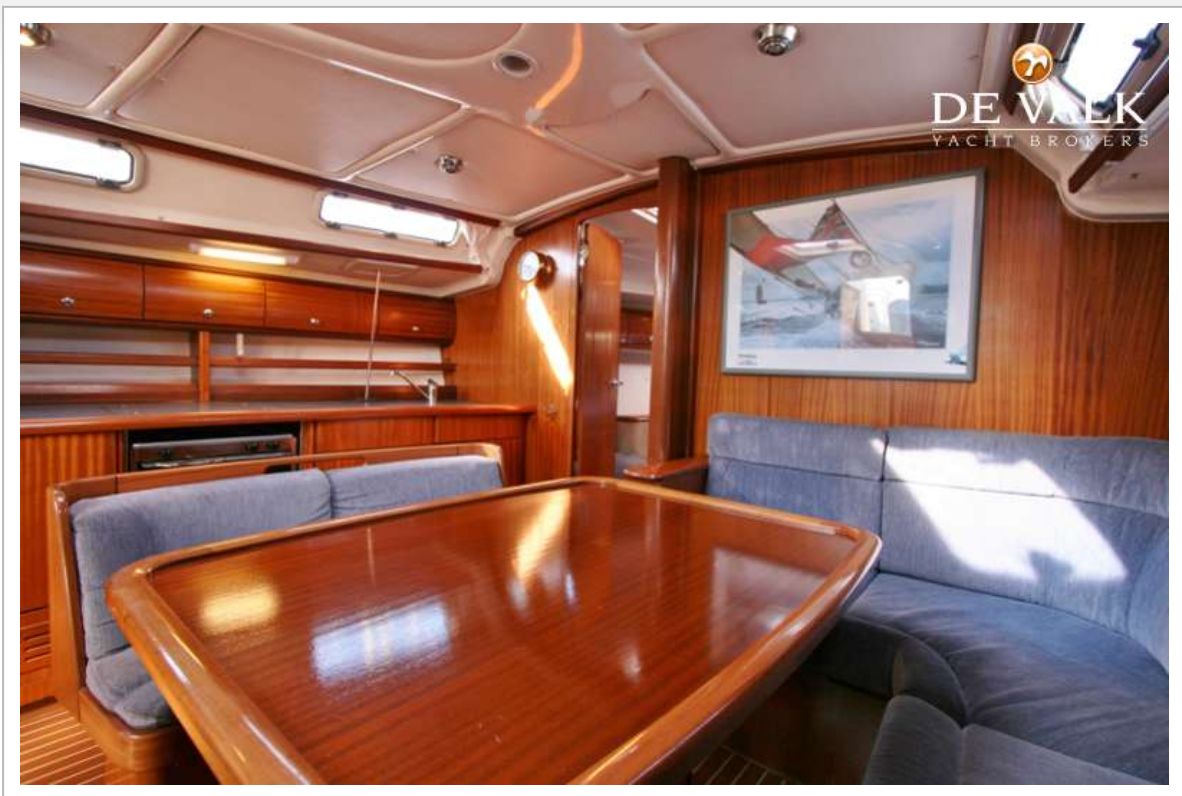
BAVARIA 44



BAVARIA 44



BAVARIA 44



BAVARIA 44



BAVARIA 44



BAVARIA 44



BAVARIA 44



BAVARIA 44

