



BAVARIA CRUISER 41


DE VALK
YACHT BROKERS

BAVARIA CRUISER 41

BROKER'S COMMENTS

Discover this definitely like new 41 Cruiser. From the first owner, very well equipped. The navi is highend upgraded to the newest Garmin system. Everything is there, starting from the Furling Mast , Bow Truster, Autopilot, 3 cab, 2 bathr, 2 fresh water tanks, Fusion HiFi and much more. Half of her existence she was carefully dry stored in the shelter, she spends only the Summer in water, (NO Salt Water!). There is no scratch, no dent, no wear, she ist like new or even better. Price new today would be more than 265.000,— inkl. VAT (Ask for the option list)

Johan Nooitgedagt

SPECIFICATIONS

Dimensions	12.35 x 3.96 x 2.09 (m)	Builder	Bavaria Giebelstadt
Built	2014	Cabins	3
Material	GRP	Berths	7
Engine(s)	1 x Volvo Penta D2-55F diesel	Hp/Kw	55.00 (hp), 40.48 (kw)
Asking price	sold (VAT)	Lying	contact Hindeloopen

CONTACT

Sales office	De Valk Hindeloopen B.V.	Telephone	+31 514 52 40 00
Address	Oosterstrand 1 8713 JS Hindeloopen NL	E-mail	hindeloopen@devalk.nl

DISCLAIMER

These particulars are given in good faith as supplied but cannot be guaranteed.



BAVARIA CRUISER 41

GENERAL

Model	BAVARIA CRUISER 41
Type	sailing yacht
LOA (m)	12,35
LWL (m)	10,75
Beam (m)	3,96
Draft (m)	2,09
Air draft (m)	18,50
Headroom (m)	1,95
Year built	2014
Builder	Bavaria Giebelstadt
Country	Germany
Designer	Farr Yacht Design
Displacement (t)	8,68
Ballast (tonnes)	cast iron 2,4
CE norm	A
Hull material	GRP
Hull colour	white
Hull shape	round-bilged
Keel type	fin keel
Superstructure material	GRP
Rubbing strake	aluminum
Deck material	GRP
Deck finish	non-skid moulded in
Superstructure deck finish	non-skid moulded in
Cockpit deck finish	Durateak
Antifouling (year)	2019
Window frame	aluminium And Stainless steel
Window material	tempered glass
Deckhatch	8x Lewmar
Portholes	7x Lewmar



BAVARIA CRUISER 41

Fuel tank (litre)	polyethylene 210 ltr.
Level indicator (fuel tank)	yes
Freshwater tank (litre)	polyethylene 1x 200 ltr. 1x 150 ltr.
Level indicator (freshwater)	Boardcomputer
Blackwater tank (litre)	2x ca. 70 ltr.
Level indicator (blackwater)	Boardcomputer
Blackwater tank extraction	deck extraction + uw line
Wheel steering	rack & pinion 2x Jefa Steering
Emergency tiller	yes

ACCOMMODATION

Cabins	3
Berths	7
Interior	teak
Layout	yes
Floor	wood
Saloon	yes
Headroom saloon (m)	1.95
Heating	diesel ducted hot air Webasto 3.9kw
Navigation center	yes
Chart table	yes
Aft Cabin	2x
Galley	yes
Countertop	Duropol
Sink	stainless steel Double
Cooker	calor gas
Oven	In cooker
Fridge	Isotherm
Hot water system	220V + engine
Water pressure system	
Owners cabin	double bed



BAVARIA CRUISER 41

Bed length (m)	2 mtr.
Wardrobe	hanging/drawers/shelves
Bathroom	en suite
Toilet	Jabsco
Toilet system	manual
Wash basin	Yes
Shower	Yes
Guest cabin 1	double bed
Bed length (m)	2 mtr.
Wardrobe	drawers and shelves
Guest cabin 2	double bed
Bed length (m)	2 mtr.
Wardrobe	drawers and shelves
Bathroom	shared
Toilet	Jabsco
Toilet system	manual
Wash basin	Yes
Shower	Yes

MACHINERY

No of engines	1
Make	Volvo Penta
Type	D2-55F
HP	55
kW	40,48
Fuel	diesel
Year installed	2014
Maximum speed (kn)	7
Cruising speed (kn)	6
Consumption (l/hr)	3
Engine hours	119.4



BAVARIA CRUISER 41

Engine cooling system	freshwater heat exchanger
Drive	sail-drive
Saildrive seal	yes
Engine controls	bowden cable
Gearbox	mechanical
Bowthruster	electric Site Power
Exhaust	watercooled
Propeller type	fixed
Propeller blades	3
Manual bilge pump	yes
Electric bilge pump	yes
Electrical installation	12 / 220 V
Start battery	2019
Service battery	2019
Bowthruster battery	yes
Battery charger	12V/40A
Shorepower	with cable

NAVIGATION

Compass	Plastimo Olympic 135
Depth sounder	Garmin GMI 20
Depth sounder/log	Garmin GMI 20
Log	2x Garmin GMI 20
Windset	2x Garmin GMI 20
VHF	Garmin VHF
Autopilot	Garmin GHC 20 Control unit
Rudder angle indicator	Garmin GHC 20 Control unit
Plotter/GPS	Garmin GPSmap 1020
Electronic chart(s)	yes
AIS receiver	Garmin VHF 300i AIS
Radio receiver	yes



EPIRB	yes
Navigation lights	yes

EQUIPMENT

Sprayhood with grab rail	2019
Cockpit cover	2019
Cockpit cushions	yes
Cockpit table	yes
Bathing platform	foldable
Boarding ladder	stainless steel
Bow ladder	yes
Deck shower	yes
Anchor	Delta
Anchor chain	0.8mm / 50 mtr.
Windlass	electrical Quick
Dinghy	
Outboard	Susuki 2.5
Outboard support	yes
Sea railing	wire
Grab rail (superstructure)	stainless steel
Railing side opening gates	yes
Pushpit	yes
Pulpit	yes
Safety lines on deck	yes
Radar reflector	yes
Fenders	yes
Mooring lines	yes
Radio-cd player	Fusion
DVD player	yes
iPod connection	yes
Cockpit speakers	yes



BAVARIA CRUISER 41

Speakers in salon	yes
Speakers in cabin	yes
Clock - barometer	Wempe
Fire extinguisher	yes

RIGGING

Rigging	fractional
Standing rigging	wire
Brand mast	Seldén
Material mast	aluminium
Spreaders	2 pair
Mainsail	Elvstrøm Sails - ca. 43 m ²
Stoway mast	yes
Genoa	Elvstrøm Sails - 34m ² - UV 2019
Genoa furler	Furlex 304S
A-symmetric spi	new and unused With snuffer
Reefing System	main in-mast furling
Backstay adjuster	mechanical
Boomvang	gasspring
Primary sheet winch	2x Harken
Genoa sheetwinches	2x Harken
Halyard winches	2x Harken



BAVARIA CRUISER 41



BAVARIA CRUISER 41



BAVARIA CRUISER 41



BAVARIA CRUISER 41



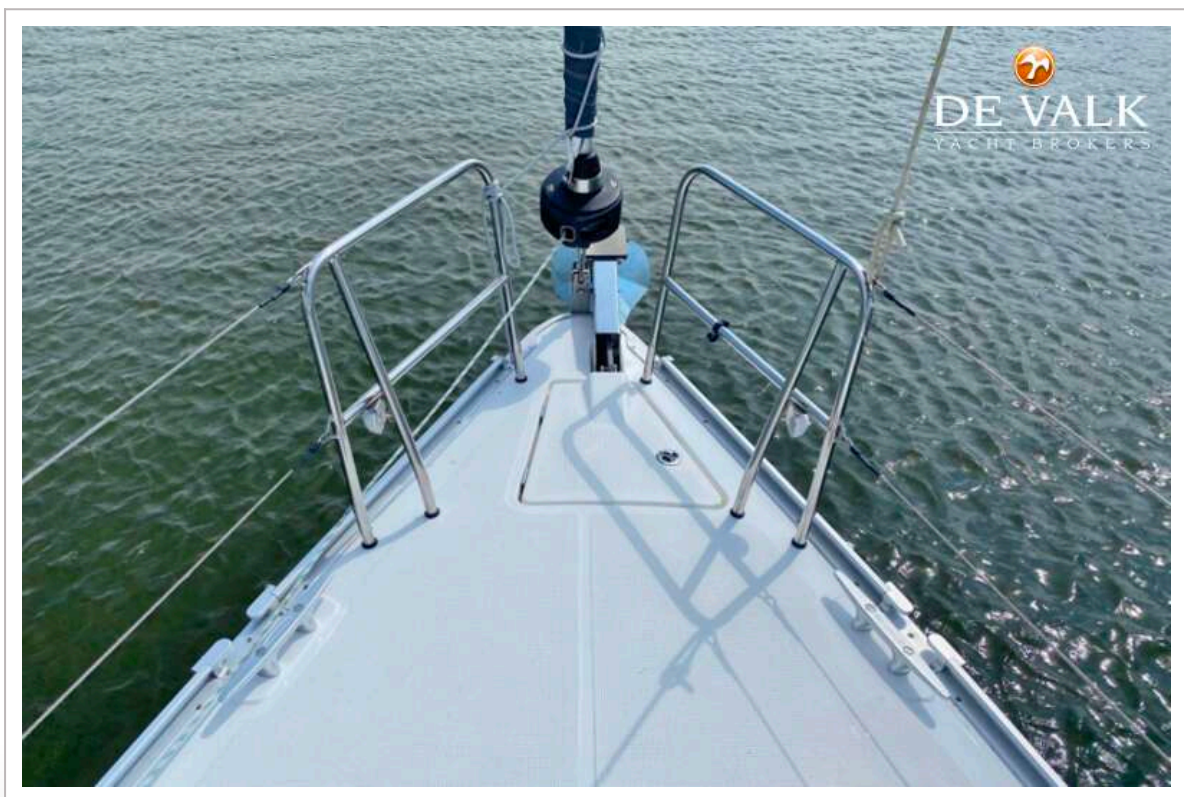
BAVARIA CRUISER 41



BAVARIA CRUISER 41



BAVARIA CRUISER 41



BAVARIA CRUISER 41



BAVARIA CRUISER 41



BAVARIA CRUISER 41



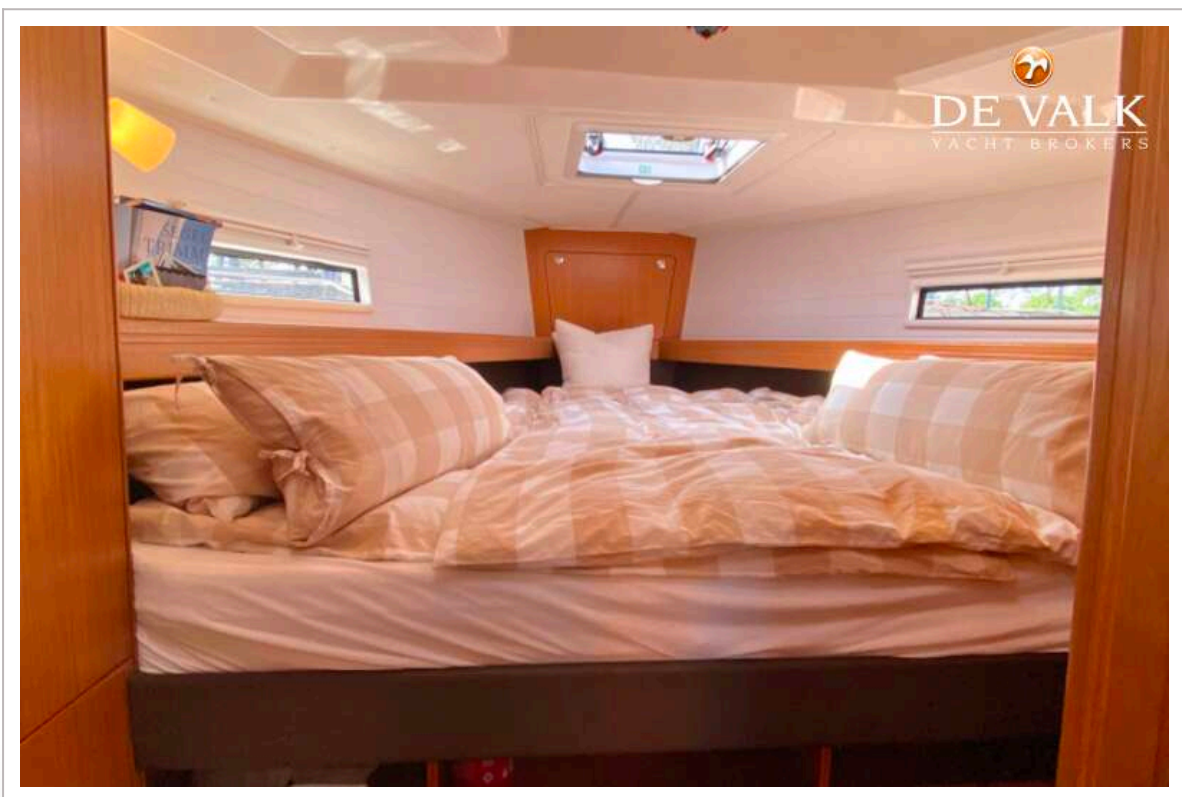
BAVARIA CRUISER 41



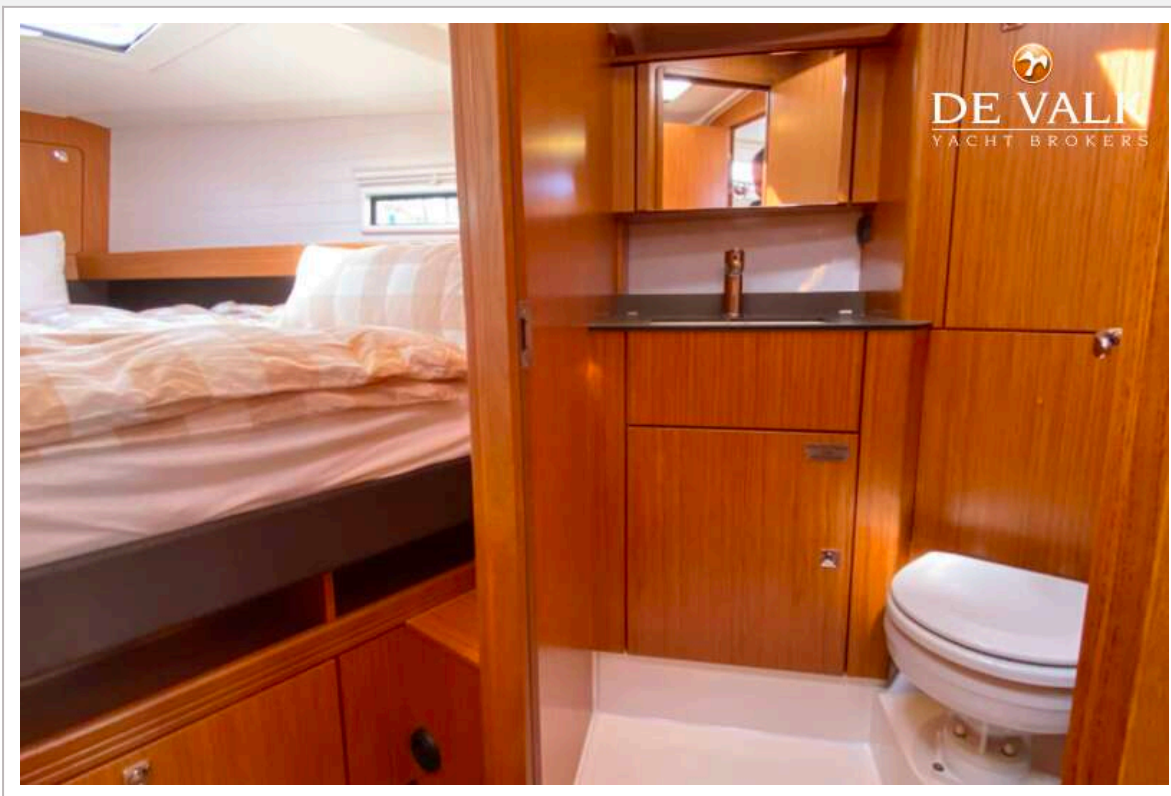
BAVARIA CRUISER 41



BAVARIA CRUISER 41



BAVARIA CRUISER 41



BAVARIA CRUISER 41



BAVARIA CRUISER 41



BAVARIA CRUISER 41



BAVARIA CRUISER 41



BAVARIA CRUISER 41

