



DE VALK
YACHT BROKERS



DIANA 60



DE VALK
YACHT BROKERS

BROKER'S COMMENTS

This Diana 60 combines comfort, style and excellent sailing behavior. This yacht is easy to handle with two people and is well maintained in detail. The current owner maintains the yacht very well and this Diana 60 has a lot of space and comfort on board including three cabins, spacious saloon, bow thruster, wind generator and a washing machine. It is suitable for a short stay, but also for a longer trip! All adjustments made in recent years have been carried out very well in terms of quality and are available for inspection. This beautiful Diana 60 can be viewed at our office in Hindeloopen!

Henri van Eelen

SPECIFICATIONS

Dimensions	18.11 x 4.80 x 2.30 (m)	Builder	Lien Hwa Industrial Corp
Built	1989	Cabins	3
Material	GRP	Berths	7
Engine(s)	1 x Perkins 6,3544 diesel	Hp/Kw	135.00 (hp), 99.22 (kw)
Asking price	sold (VAT)	Lying	at sales office

CONTACT

Sales office	De Valk Hindeloopen B.V.	Telephone	+31 514 52 40 00
Address	Oosterstrand 1 8713 JS Hindeloopen NL	E-mail	hindeloopen@devalk.nl

DISCLAIMER

These particulars are given in good faith as supplied but cannot be guaranteed.



GENERAL

Model	DIANA 60
Type	sailing yacht
LOA (m)	18,11
Beam (m)	4,80
Draft (m)	2,30
Air draft (m)	26,50
Headroom (m)	2,30
Year built	1989
Builder	Lien Hwa Industrial Corp
Country	Taiwan
Designer	G. Mull
Displacement (t)	30
Ballast (tonnes)	lead 8
CE norm	NA
Hull material	GRP
Hull colour	blue
Hull shape	round-bilged
Keel type	bulb keel
Rubbing strake	Hout met stalen strip
Deck material	GRP
Deck finish	teak
Superstructure deck finish	teak
Cockpit deck finish	teak
Dorades	yes
Window frame	aluminium
Window material	double glazing Gehard en warmtewerend
Deckhatch	yes
Insulation	glasswool Glaswol + folie
Fuel tank (litre)	stainless steel 260L
Fuel tank 2 (litre)	2x 425L + 425L



Level indicator (fuel tank)	yes
Freshwater tank (litre)	stainless steel 2x 480L + 480L
Level indicator (freshwater)	yes
Blackwater tank (litre)	polyethylene
Level indicator (blackwater)	yes
Blackwater tank extraction	deck extraction + pump
Greywater tank (litre)	steel 30L
Level indicator (greywater)	"Vol indicator"
Wheel steering	hydraulic

ACCOMMODATION

Cabins	3
Berths	7
Interior	teak
Floor	teak and holly Vloer kombuis en kaartentafel kurk
Open cockpit	yes
Aft deck	yes
Deck saloon	yes
Doghouse	yes
Saloon	yes
Headroom saloon (m)	2,30m
Heating	diesel ducted hot air Webasto Gloeispiraalheaters in meerdere cabines en salon
Chart table	yes
Galley	yes
Countertop	plastic
Sink	stainless steel
Cooker	electric
Oven	yes
Fridge	Isotherm
Hot water system	220V + engine



Water pressure system	electrical Hydrofoor en elektrisch
Manual and/or foot pump	yes
Kettle	yes
Owners cabin	double bed
Bed length (m)	2,10
Wardrobe	hanging/drawers/shelves
Bathroom	en suite
Toilet	en suite Dometic
Toilet system	electric
Wash basin	in the bathroom
Shower	en suite
Guest cabin 1	bunk bed
Wardrobe	hanging and drawers
Bathroom	shared
Toilet	shared Wasmachine
Wash basin	in the bathroom
Guest cabin 2	bunk bed Stapelbed + 3e bed
Bed length (m)	2,10m
Wardrobe	hanging and drawers
Bathroom	en suite
Toilet	en suite RM 69
Wash basin	in the bathroom
Washing machine	ONE Concept DB004

MACHINERY

No of engines	1
Make	Perkins 6,3544
HP	135
kW	99,22
Fuel	diesel
Maximum speed (kn)	9



Engine cooling system	freshwater heat exchanger
Drive	shaft
Bowthruster	hydraulic
Exhaust	watercooled
Propeller type	feathering
Propeller blades	3x
Propeller shaft material	stainless steel
Manual bilge pump	yes
Electric bilge pump	yes
Bilge alarm	Automatisch
Generator	wet exhaust
Batteries	2017 4x 265Ah
Start battery	yes
Generator battery	1x
Battery monitor	Victron
Battery charger/inverter	Victron Quattro 3000W
Wind generator	Silent Wind 400+
Diode battery combiners	yes
Shorepower	with cable 10m+ 10m+ 25m

NAVIGATION

Compass	Ritchie Powerdamp
Electric compass	SIMRAD
Depth sounder	2019 SIMRAD
Depth sounder/log	yes
Forw. looking depth sounder	B&G forward looking sonar
Windset	SIMRAD
Repeater	1x kaartentafel IS20 , 1x garage IS40 Triton
VHF	Icom M423G met extra Mic in kuip HM-195
VHF handheld	3x
Autopilot	SIMRAD AP24



Rudder angle indicator	SIMRAD IS20
Radar	B&G Broadband BR24 4G
Radar/GPS/plotter	B&G Zeus 2 touch 7" binnen, + Vulcan 9" buiten
Weather receiver	Mohrer Weather info Box WIBE4S
Navtex	JRC 300A
Electronic chart(s)	Cmap
AIS receiver	OceanSat (2e VHF antenne in de mast)
EPIRB	ACR Global RLB 35
Personal MOB transmitter	2x Ocean Signal MOB1 + Ocean Signal Alarm Box met sirene
Navigation lights	yes
Searchlight	yes

EQUIPMENT

Sprayhood	Met extra tent
Fixed hardtop	yes
Cockpit cover	yes
Cockpit cushions	yes
Cockpit table	yes
Bathing platform	yes
Bow ladder	yes
Gangway	Aluminium
Anchor	CQR Plough 75 Lbs
Anchor 2	Bruce
Anchor chain	yes
Windlass	hydraulic
Capstan	yes
Deck wash	yes
Dinghy	inflatable
Outboard	Yamaha 4PK
Outboard support	yes
Davits	stainless steel



Davits controls	manual
Sea railing	wire
Grab rail (superstructure)	teak
Railing side opening gates	yes
Life raft	container BFA 6 p
Life raft (pers)	6
Last life raft survey	2018
Lifejackets	yes
Safety harness	yes
Lifebuoy	yes
Danbuoy	yes
Safety lines on deck	yes
Horn	electric
Binocular	yes
Radar reflector	yes
Fenders	yes
Mooring lines	yes
Spare parts	yes
Tools	yes
Radio-cd player	SONY
Cockpit speakers	yes
Speakers in salon	yes
Clock - barometer	yes
Fire extinguisher	yes
Extra info	Afdekhoezen ramen luiken en dekluiken
Extra info	Tentzeil geschikt voor voor- en achterdek
Extra info	Vloeren in gehele schip zijn geïsoleerd

RIGGING

Rigging	cutter
Standing rigging	wire



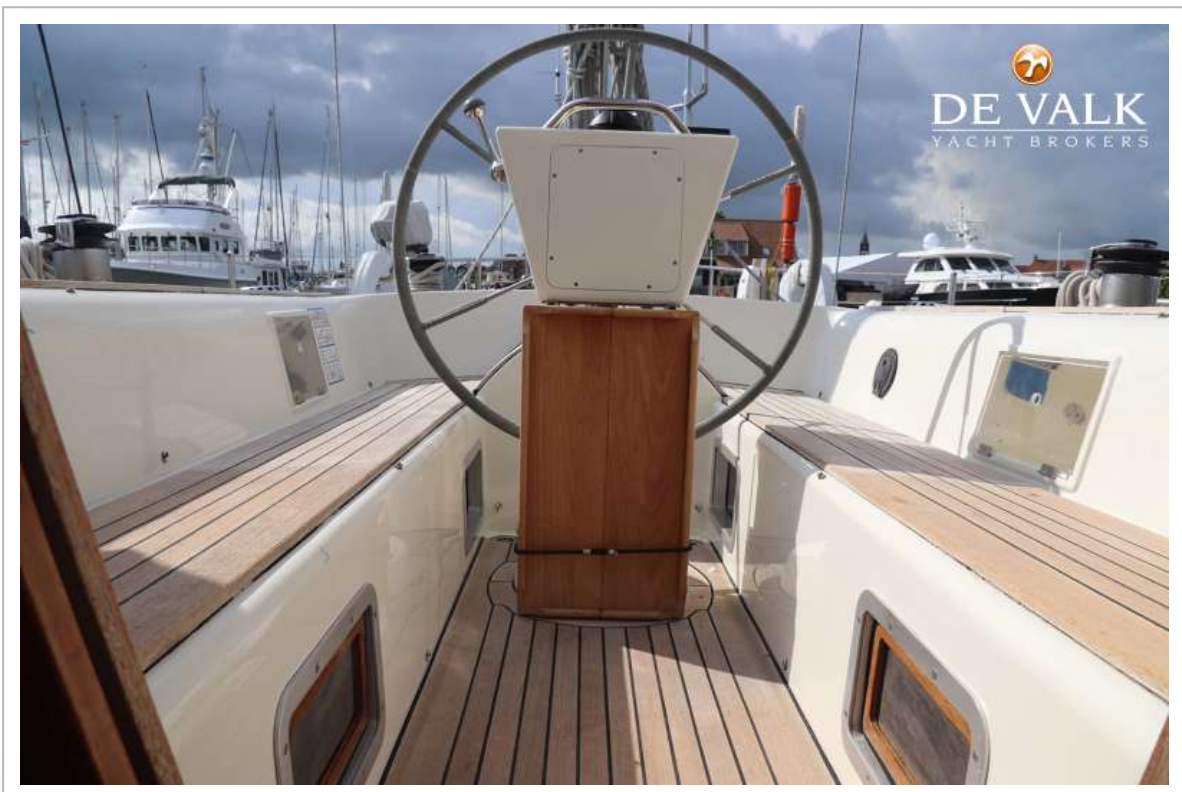
Brand mast	Proctor
Material mast	aluminium
Spreaders	2x
Keel stepped mast	yes
Fully battened mainsail	yes
Furling boom	+ elektrische lier
Jib	+ rolsysteem
Genoa	yes
Genoa furler	yes
Reefing System	main in-boom furling
Backstay adjuster	hydraulic
Boomvang	mechanical
Primary sheet winch	Lewmar 55/ 65
Secondary sheet winch	Andersen
Halyard winches	Andersen
Winchcovers	Op elektrische lier
Spi-pole	aluminium



DIANA 60



DIANA 60



DIANA 60



DIANA 60



DIANA 60



DIANA 60



DIANA 60

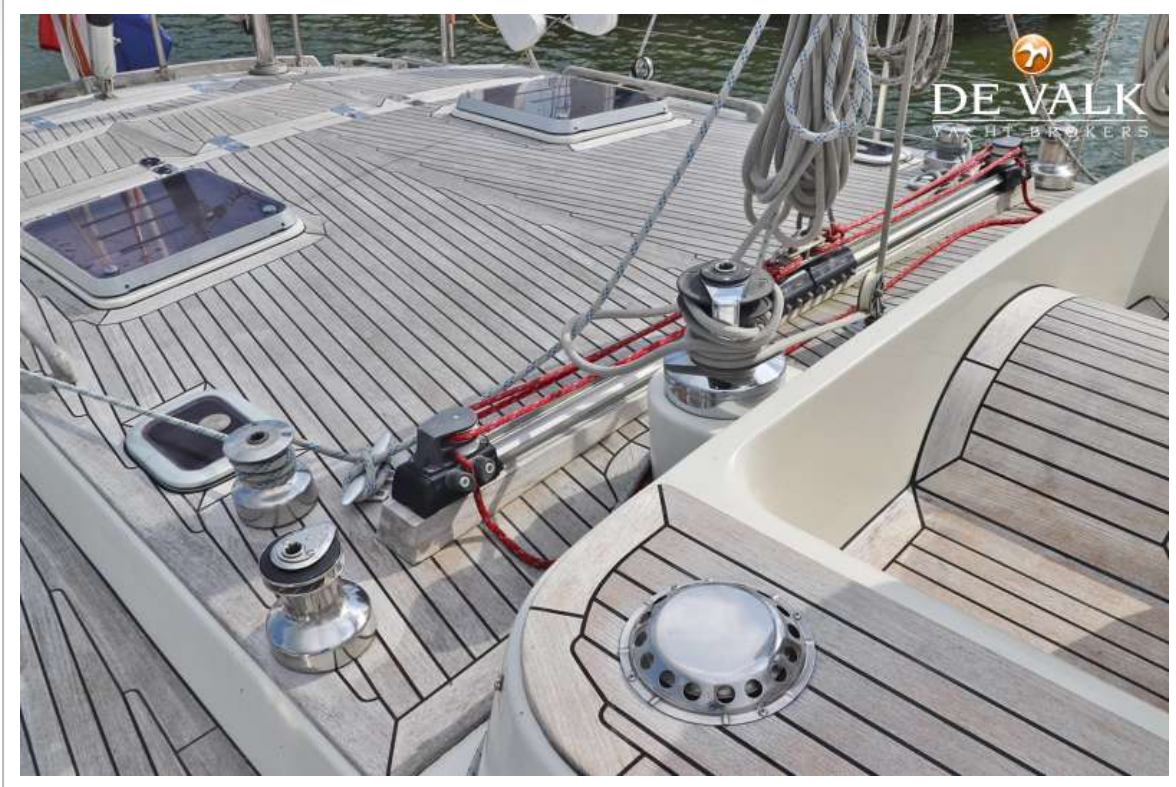


DIANA 60





DIANA 60



DIANA 60



DIANA 60



DIANA 60



DIANA 60



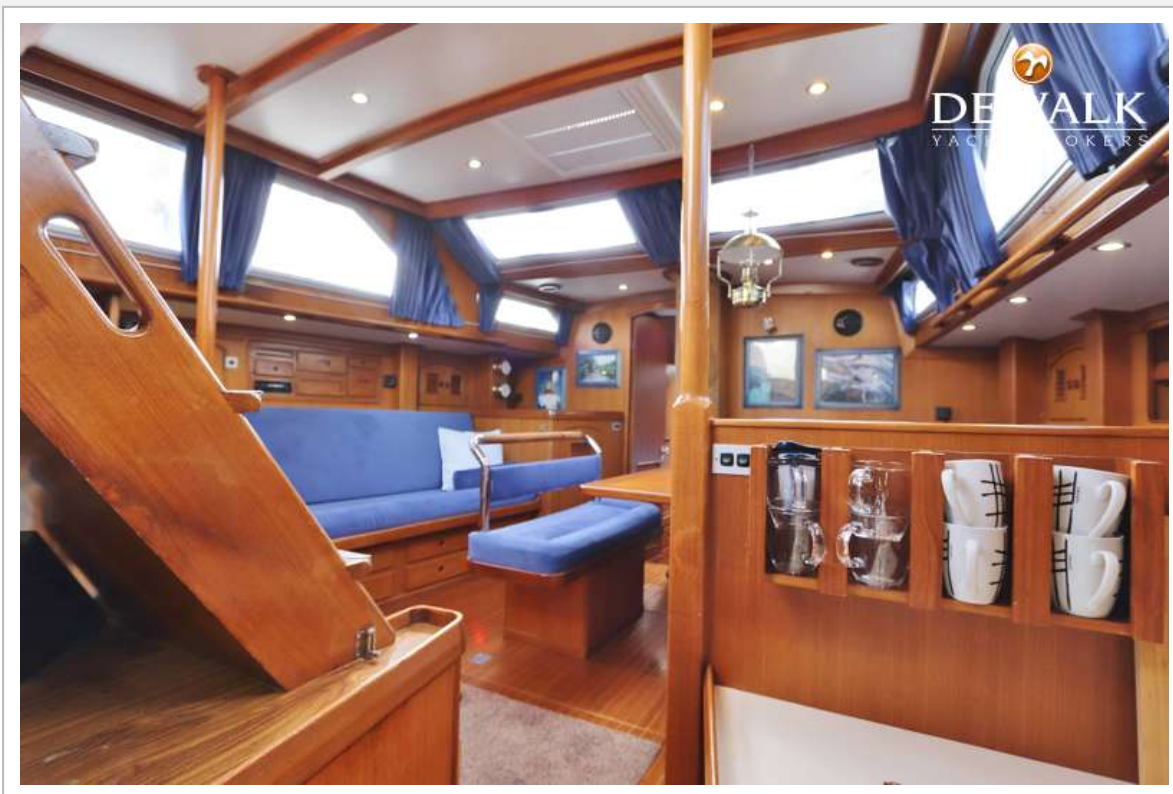
DIANA 60



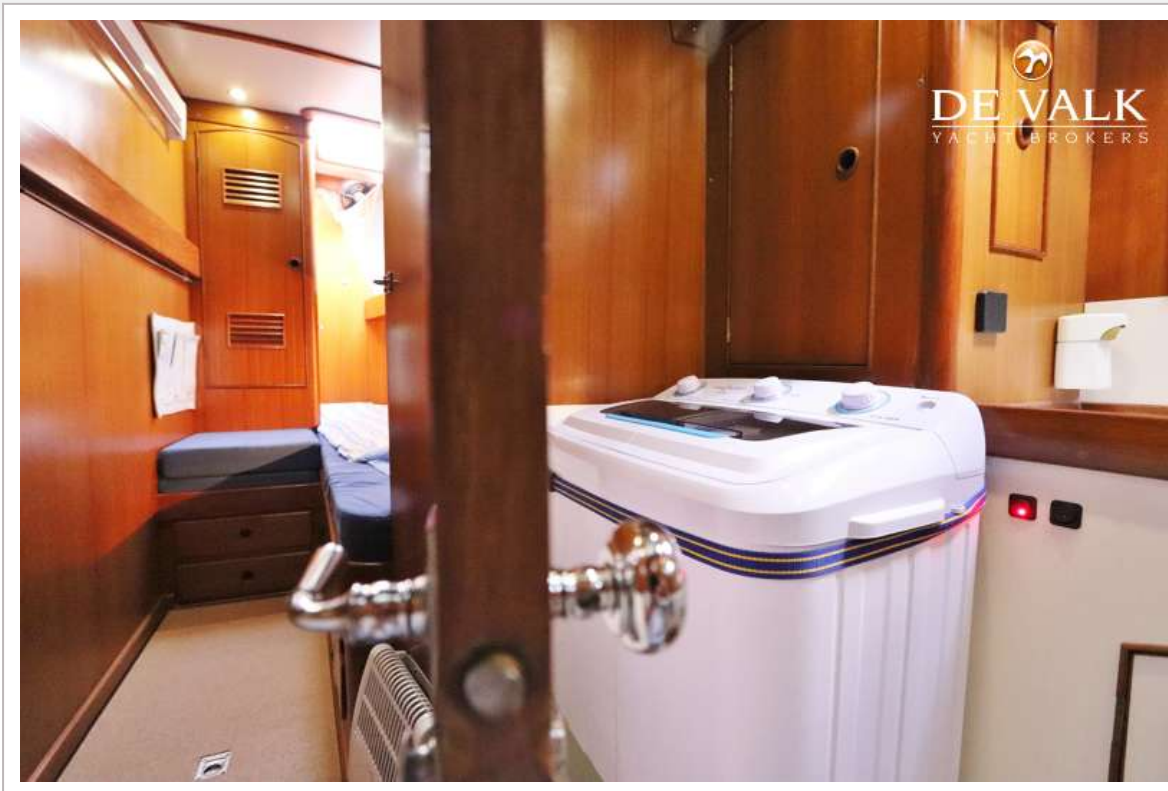
DIANA 60



DIANA 60



DIANA 60



DIANA 60

