



DE VALK
YACHT BROKERS



COLVIC SUNQUEST 38



DE VALK
YACHT BROKERS

COLVIC SUNQUEST 38

BROKER'S COMMENTS

This Colvic Sunquest 38 was built in 1997 at Enterprice Marine in Italy. It has the necessary comfort, including two cabins with their own bathroom and toilet and a spacious lounge. In addition, this Sunquest 38 has two Cummins Turbo Diesel engines 330 HP, bow and stern thruster and the necessary navigation equipment. She is well maintained and is suitable for a weekend away as well as for a longer trip. If this Sunquest 38 has aroused your interest, we look forward to see you at our office in Hindeloopen!

Henri van Eelen

SPECIFICATIONS

Dimensions	11.48 x 3.98 x 1.06 (m)	Builder	Enterprice Marine
Built	1997	Cabins	2
Material	GRP	Berths	4
Engine(s)	2 x Cummins Turbo Diesel diesel	Hp/Kw	2 x 330.00 (hp), 242.00 (kw)
Asking price	sold (VAT)	Lying	at sales office

CONTACT

Sales office	De Valk Hindeloopen	Telephone	+31 514 52 40 00
Address	Oosterstrand 1 8713 JS Hindeloopen The Netherlands	E-mail	hindeloopen@devalk.nl

DISCLAIMER

These particulars are given in good faith as supplied but cannot be guaranteed.



COLVIC SUNQUEST 38

GENERAL

Model	COLVIC SUNQUEST 38
Type	catamaran motor yacht
LOA (m)	11,48
Beam (m)	3,98
Draft (m)	1,06
Headroom (m)	1,95
Year built	1997
Builder	Enterprice Marine
Country	Italy
Designer	Nevio Forcellini
Displacement (t)	10
CE norm	NA
Hull material	GRP
Hull colour	off-white
Hull shape	deep-V
Superstructure material	GRP
Rubbing strake	aluminum With rubber
Deck material	GRP
Deck finish	non-skid moulded in
Superstructure deck finish	non-skid moulded in
Cockpit deck finish	teak
Antifouling (year)	2019
Window frame	aluminium
Window material	tempered glass
Deckhatch	1x
Portholes	aluminium
Flybridge	yes
Flybridge cover	2018
Radar arch	non collapsible
Fuel tank (litre)	stainless steel 1000L



Fuel tank 2 (litre)	stainless steel 500L
Level indicator (fuel tank)	yes
Freshwater tank (litre)	stainless steel 800L
Level indicator (freshwater)	yes
Wheel steering	hydraulic
Inside helm position	yes
Outside helm position	hydraulic
Flybridge helm position	hydraulic

ACCOMMODATION

Cabins	2
Berths	4
Interior	oak
Floor	carpet
Headroom saloon (m)	1,95
Convertible berth	yes
Sliding door to cockpit	yes
Sliding door to aft deck	yes
Galley	yes
Countertop	plastic
Sink	stainless steel
Cooker	induction Siemens
Extractor	yes
Microwave	yes
Fridge	yes
Hot water system	220V 12V + 220V
Coffee maker	yes
Owners cabin	double bed
Bed length (m)	1,90
Wardrobe	hanging
Bathroom	en suite



Toilet	en suite
Toilet system	electric
Wash basin	at the toilet
Shower	en suite
Guest cabin 1	twin single
Bed length (m)	1,9m
Wardrobe	walk-in closet
Bathroom	en suite
Toilet	en suite
Toilet system	electric
Wash basin	in the bathroom
Shower	en suite

MACHINERY

No of engines	2
Make	Cummins
Type	Turbo Diesel
HP	330
kW	242,00
Fuel	diesel
Year installed	1997
Maximum speed (kn)	36,00
Cruising speed (kn)	20,00
Engine hours	390
Drive	shaft
Bowthruster	electric Vetus
Sternthruster	electric 2017 Max Prop + remote
Gearbox	mechanical
Exhaust	watercooled
Propeller type	fixed
Shaft lubrication	water



Manual bilge pump	yes
Electric bilge pump	yes
Generator	wet exhaust
Start battery	yes
Service battery	yes
Generator battery	yes
Inverter	yes
Shorepower	with cable
Trimtabs	yes

NAVIGATION

Compass	1x binnen 1x Flybridge
Compass on flybridge	1x Quad display B&G binnen 1x Quad display B&G Flybridge
Electric compass	Quad display B&G
Depth sounder/log	Quad display B&G
VHF	Flybridge 1x Shipmate binnen 1x Shipmate
Autopilot	Netwerk Pilot B&G + remote
Rudder angle indicator	yes
Radar	SIMRAD Dome
GPS	yes
Plotter/GPS	1x Flybridge Geonav 11" binnen: Geonav 7" 1x GPS 720 Garmin 1x
Electronic chart(s)	yes
Radio receiver	yes
Extra info	Extra light op navigatie-/ stuurstand

EQUIPMENT

Window cover	2019
Bathing platform	yes
Boarding ladder	steel
Deck shower	yes



Anchor	CQR Plough
Dinghy	rigid inflatable Vaillant
Outboard	Yamaha 2,5 PS
Davits	aluminum
Life raft	container Arimar
Last life raft survey	2021
Sub-woofer	yes
Speakers in salon	yes
Clock - barometer	3x Baro/ Klok/ Hydro



COLVIC SUNQUEST 38



COLVIC SUNQUEST 38



COLVIC SUNQUEST 38



COLVIC SUNQUEST 38



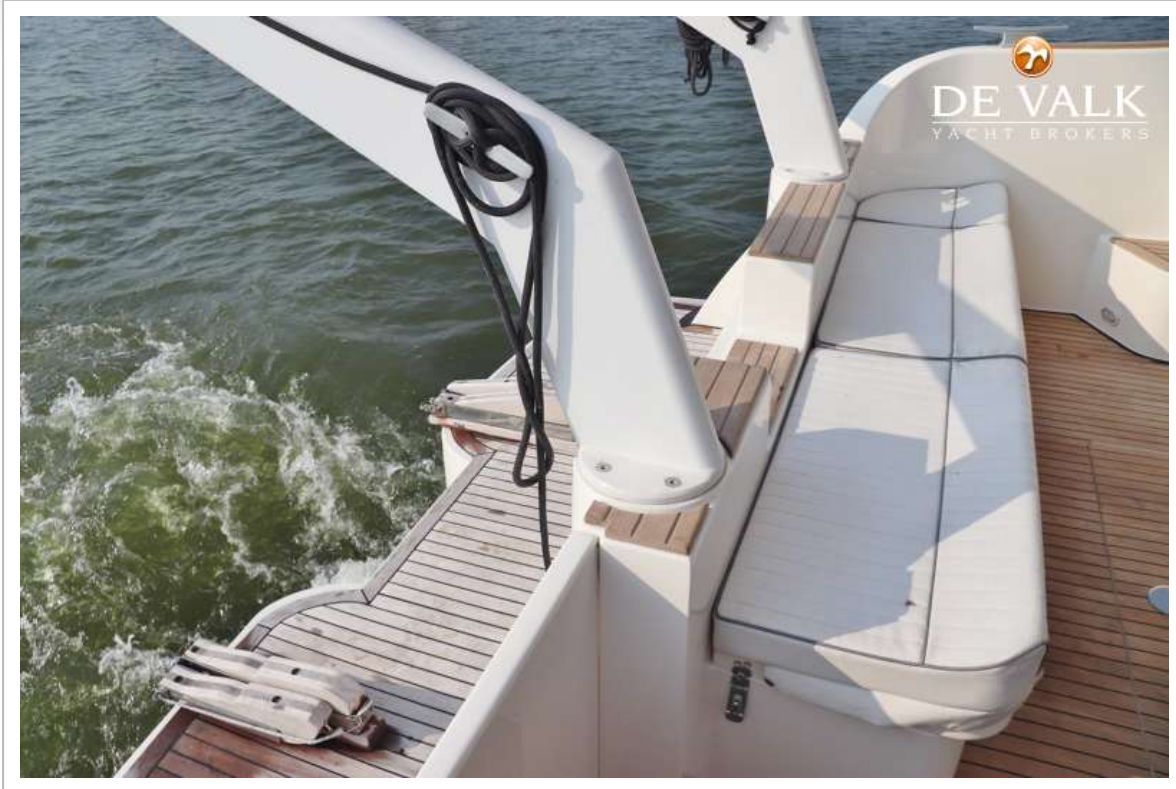
COLVIC SUNQUEST 38



COLVIC SUNQUEST 38



COLVIC SUNQUEST 38



COLVIC SUNQUEST 38



COLVIC SUNQUEST 38



COLVIC SUNQUEST 38



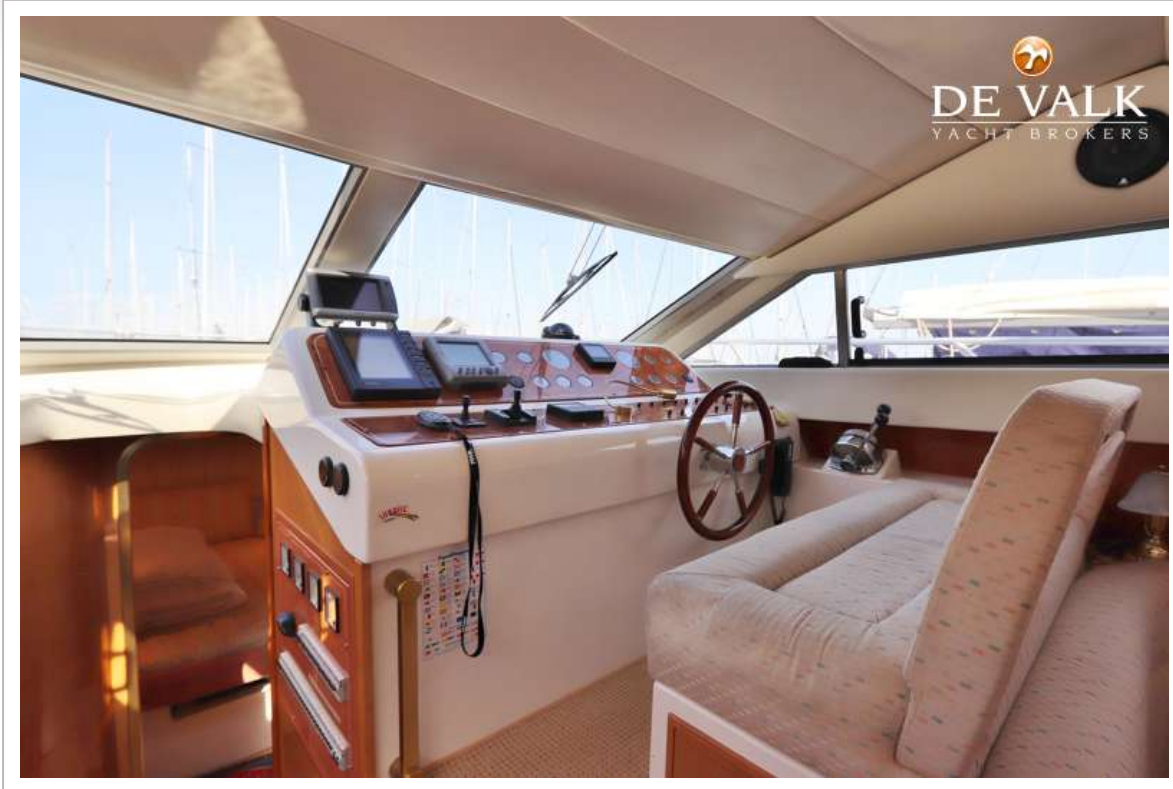
COLVIC SUNQUEST 38



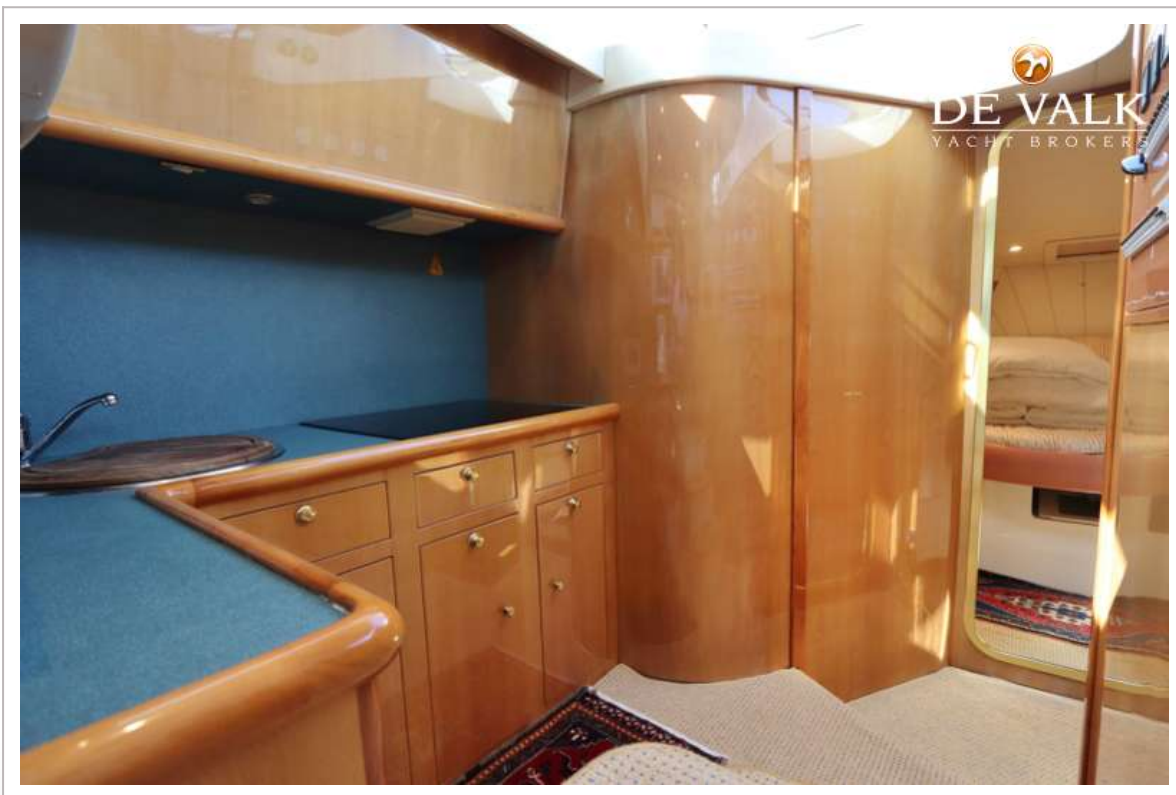
COLVIC SUNQUEST 38



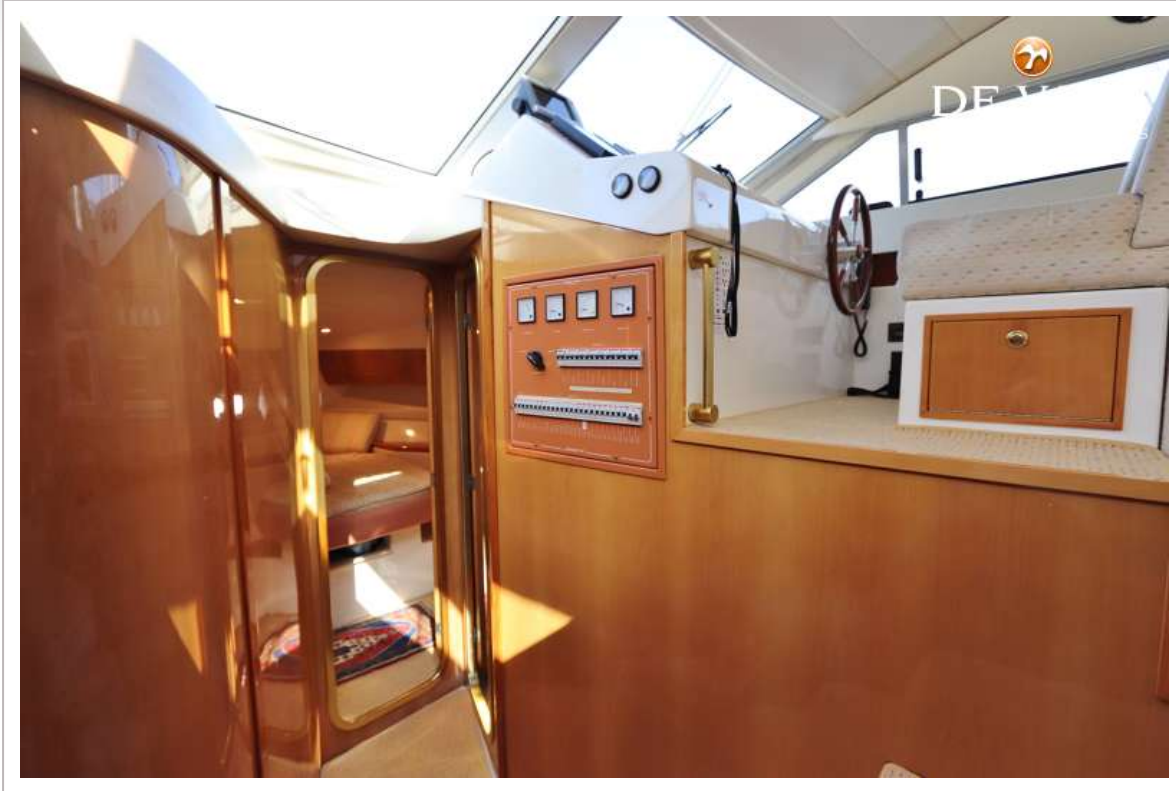
COLVIC SUNQUEST 38



COLVIC SUNQUEST 38



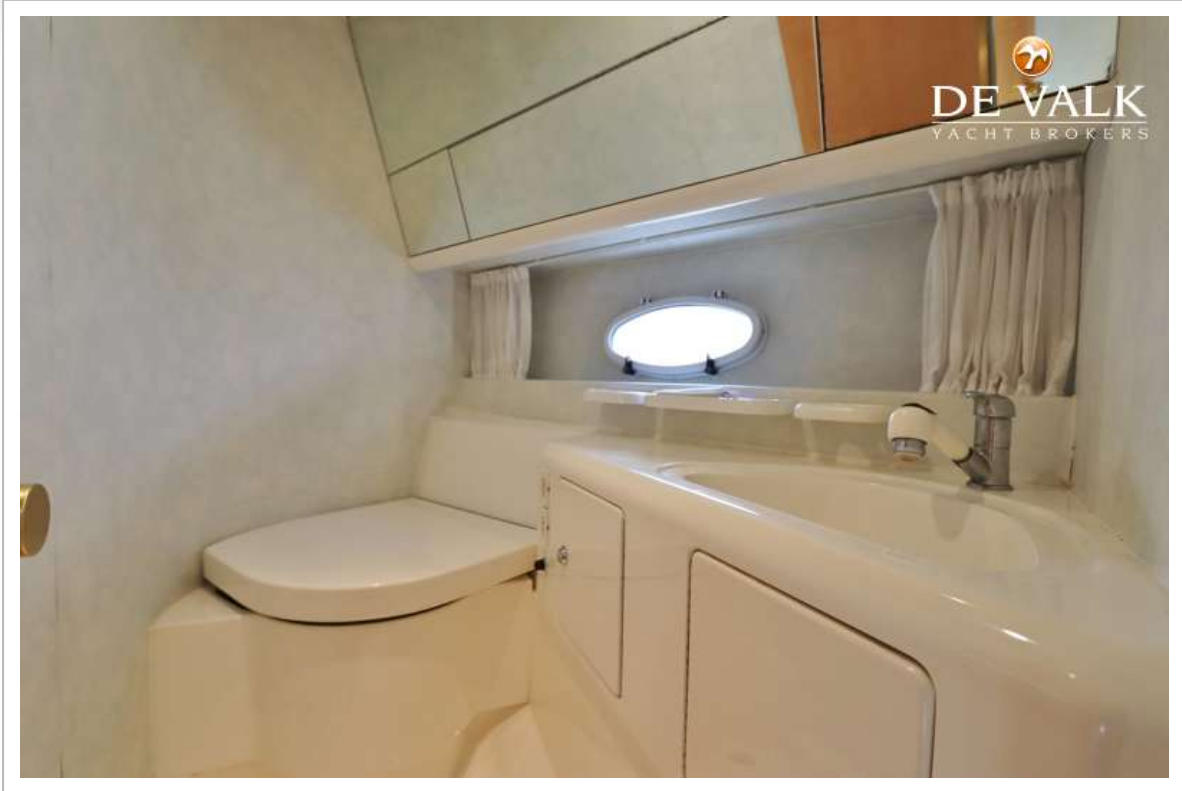
COLVIC SUNQUEST 38



COLVIC SUNQUEST 38



COLVIC SUNQUEST 38





COLVIC SUNQUEST 38

