



DE VALK
YACHT BROKERS



BAVARIA 37 CRUISER



DE VALK
YACHT BROKERS

BAVARIA 37 CRUISER

BROKER'S COMMENTS

Very well maintained and equipped Bavaria 37 Cruiser from a meticulous second owner. Good handling and sail performance thanks to the easy to handle stoway Elvström sails and the german sheeting system. Safe due to handling the rig from the cockpit, so ideal for short-handed sailing. The Bavaria 37 Cruiser offers good stowage space below and on deck. The 2 cabin layout makes here extremely spacious and lots of storage room.

Johan Nooitgedagt

SPECIFICATIONS

Dimensions	11.35 x 3.80 x 1.95 (m)	Builder	Bavaria Yachtbau GmbH
Built	2007	Cabins	2
Material	GRP	Berths	6
Engine(s)	1 x Volvo Penta D2-40 diesel	Hp/Kw	40.00 (hp), 29.00 (kw)
Asking price	sold (VAT)	Lying	contact Hindeloopen

CONTACT

Sales office	De Valk Hindeloopen B.V.	Telephone	+31 514 52 40 00
Address	Oosterstrand 1 8713 JS Hindeloopen NL	E-mail	hindeloopen@devalk.nl

DISCLAIMER

These particulars are given in good faith as supplied but cannot be guaranteed.



BAVARIA 37 CRUISER

GENERAL

Model	BAVARIA 37 CRUISER
Type	sailing yacht
LOA (m)	11,35
LWL (m)	9,82
Beam (m)	3,80
Draft (m)	1,95
Air draft (m)	16,00
Headroom (m)	1,97
Year built	2007
Builder	Bavaria Yachtbau GmbH
Country	Germany
Designer	J&J Design
Displacement (t)	8,5
Ballast (tonnes)	cast iron 1,9
CE norm	A
Hull material	GRP
Hull colour	white
Hull shape	round-bilged
Keel type	fin keel
Superstructure material	GRP
Deck material	GRP
Superstructure deck finish	non-skid moulded in
Cockpit deck finish	teak
Antifouling (year)	2019
Window frame	aluminium
Window material	perspex
Deckhatch	yes
Portholes	aluminium
Fuel tank (litre)	polyethylene 150 ltr.
Freshwater tank (litre)	polyethylene 210 ltr.



BAVARIA 37 CRUISER

Blackwater tank (litre)	polyethylene
Blackwater tank extraction	deck extraction + uw line
Wheel steering	cable steering Whitlock
Emergency tiller	yes

ACCOMMODATION

Cabins	2
Berths	6
Interior	mahogany
Floor	teak and holly
Headroom saloon (m)	1,97
Heating	diesel ducted hot air Webasto Airtop 3500
Navigation center	yes
Chart table	yes
Galley	yes
Countertop	plastic
Sink	stainless steel
Cooker	Bavaria 2 burner
Oven	In cooker
Fridge	Waeco Combicool 12v
Hot water system	220V + engine QL Boiler 60l
Water pressure system	electrical
Owners cabin	double bed
Bed length (m)	15cm latex mattress 2,10 x 2,00 mtr.
Wardrobe	drawers
Bathroom	shared 1x
Toilet	Yes
Toilet system	manual 2013
Wash basin	in the bathroom
Shower	shared Yes
Guest cabin 1	bunk bed



BAVARIA 37 CRUISER

Bed length (m)	2,00 x 1,95 mrt.
Wardrobe	drawers
Extra info	Ample ventilation and light below decks through the use of deckhatches, dorade vents and skylights.

MACHINERY

No of engines	1
Make	Volvo Penta
Type	D2-40
HP	40
kW	29,00
Fuel	diesel
Maximum speed (kn)	7,00
Cruising speed (kn)	6,00
Consumption (l/hr)	3,00
Engine hours	860
Engine cooling system	freshwater heat exchanger
Drive	sail-drive
Saildrive seal	Replaced in 2015
Engine controls	bowden cable
Gearbox	mechanical Volvo Penta saildrive
Exhaust	watercooled
Propeller type	folding Volvo Penta (3 blade 2014) + 2 blade spare
Propeller blades	3
Manual bilge pump	1x
Electric bilge pump	1x
Electrical installation	12 / 220 volt
Start battery	1x 55 amp
Service battery	2x 230 amp
Battery monitor	Mastervolt Masterlink
Battery charger	Mastervolt 50amp automatic



BAVARIA 37 CRUISER

Inverter	Mastervolt 500watt
Shorepower	with cable

NAVIGATION

Compass	Plastimo Olympic 135
Depth sounder	Raymarine ST60 Bidata
Depth sounder/log	Raymarine ST60 Tridata
Log	Raymarine ST60 Tridata
Windset	Raymarine ST60 Wind
VHF	Icom IC-M505 (DSC)
VHF handheld	Icom Hm-162E
Autopilot	Raymarine ST6002
Rudder angle indicator	Raymarine ST 6002
GPS	,000
Plotter/GPS	,
Radar/GPS	
Radar/GPS/plotter	Raymarine C80
AIS receiver	Raymarine 250
Navigation lights	yes

EQUIPMENT

Sprayhood	with cover
Sprayhood with grab rail	yes
Cockpit cover	yes
Bimini	yes
Cockpit cushions	yes
Cockpit table	yes
Bathing platform	yes
Boarding ladder	stainless steel
Deck shower	hot+cold
Anchor	CQR Plough



BAVARIA 37 CRUISER

Anchor chain	yes
Windlass	electrical Quick G1100
Sea railing	stainless steel
Railing side opening gates	yes
Pushpit	yes
Pulpit	yes
Life raft	container
Life raft (pers)	6
Lifebuoy	yes
Safety lines on deck	yes
Radar reflector	yes
Fenders	yes
Mooring lines	extra cleats amidships
Radio-cd player	yes
Speakers in salon	yes

RIGGING

Rigging	fractional
Standing rigging	wire
Brand mast	Seldén
Material mast	aluminium
Spreaders	2x
Mainsail	2007
Stoway mast	yes
High aspect	2009 - with foam strips for reefing
Genoa	2007 - with foam strips for reefing
Genoa furler	Furlex 200S
Gennaker	With squeezer
Reefing System	main in-mast furling
Backstay adjuster	tackle
Boomvang	mechanical Seldén Rodkicker



BAVARIA 37 CRUISER

Primary sheet winch	2 x Lewmar 46CST
Secondary sheet winch	2 x Lewmar 40CST
Halyard winches	2 x Lewmar 30CST
Extra info	German sheeting for mainsail



BAVARIA 37 CRUISER



BAVARIA 37 CRUISER



BAVARIA 37 CRUISER



BAVARIA 37 CRUISER



BAVARIA 37 CRUISER



BAVARIA 37 CRUISER



BAVARIA 37 CRUISER



BAVARIA 37 CRUISER



BAVARIA 37 CRUISER



BAVARIA 37 CRUISER



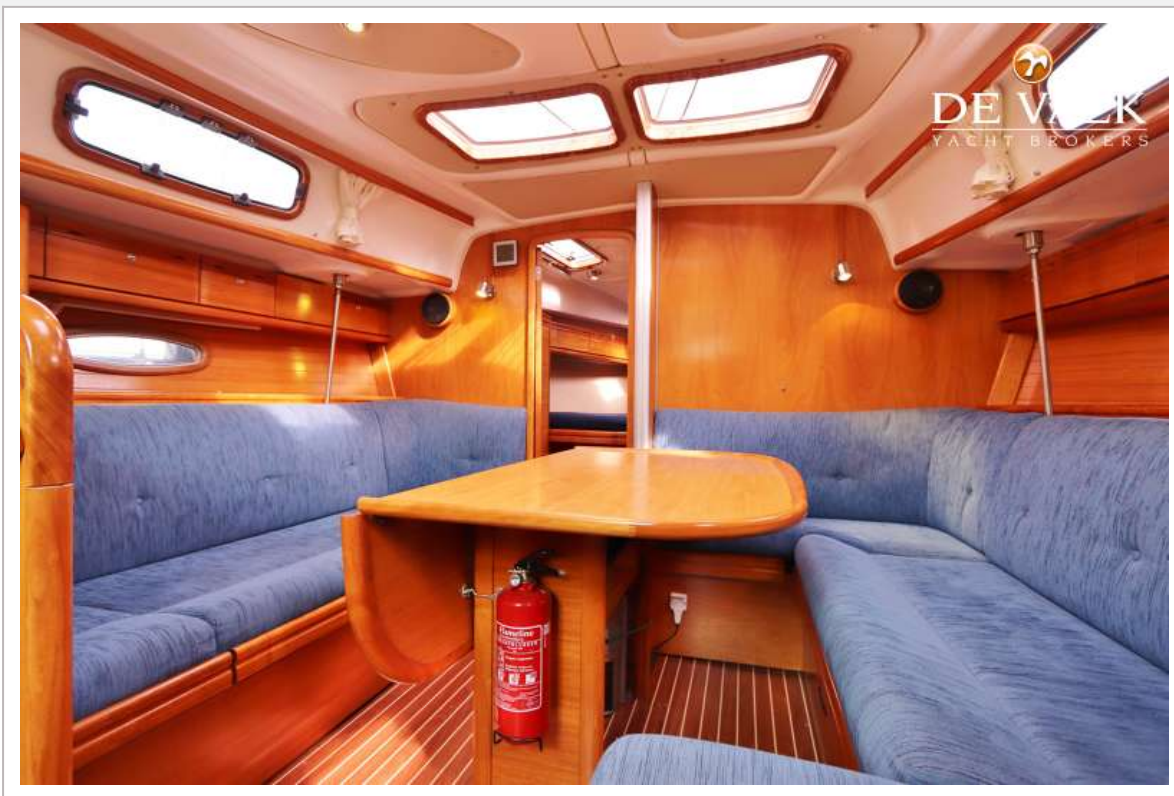
BAVARIA 37 CRUISER



BAVARIA 37 CRUISER



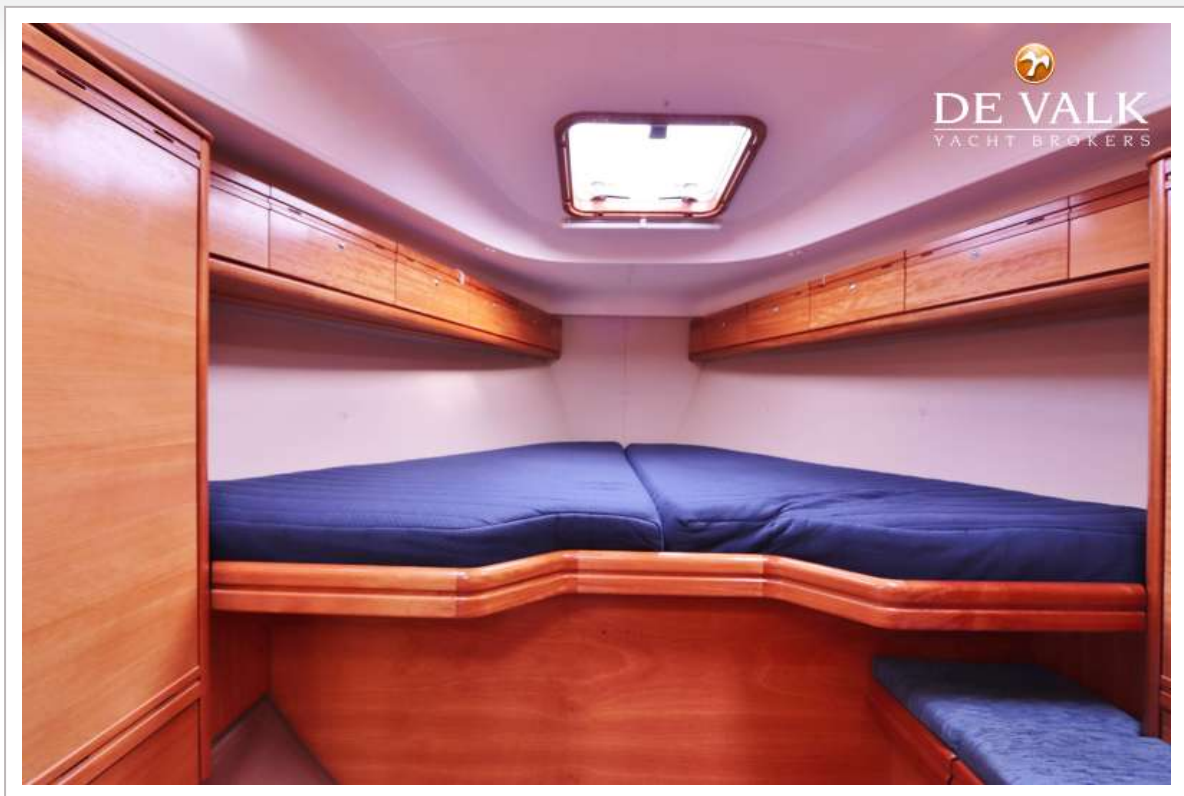
BAVARIA 37 CRUISER



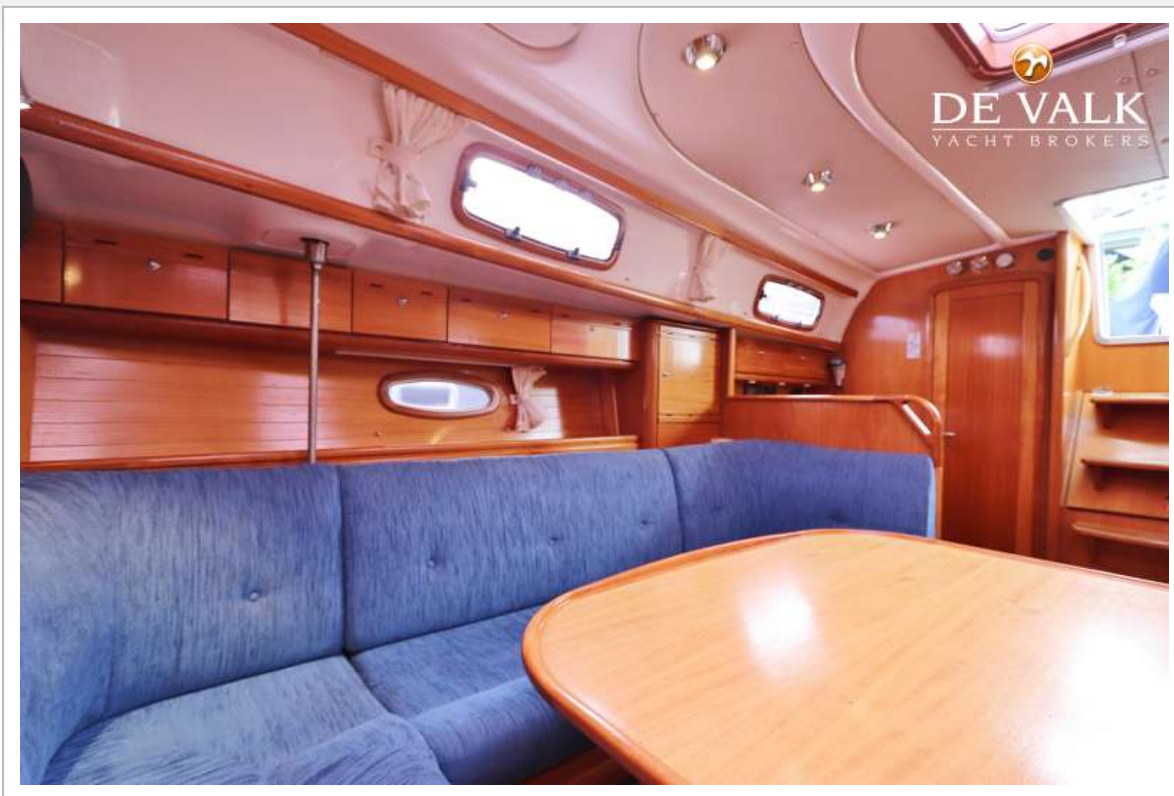
BAVARIA 37 CRUISER



BAVARIA 37 CRUISER



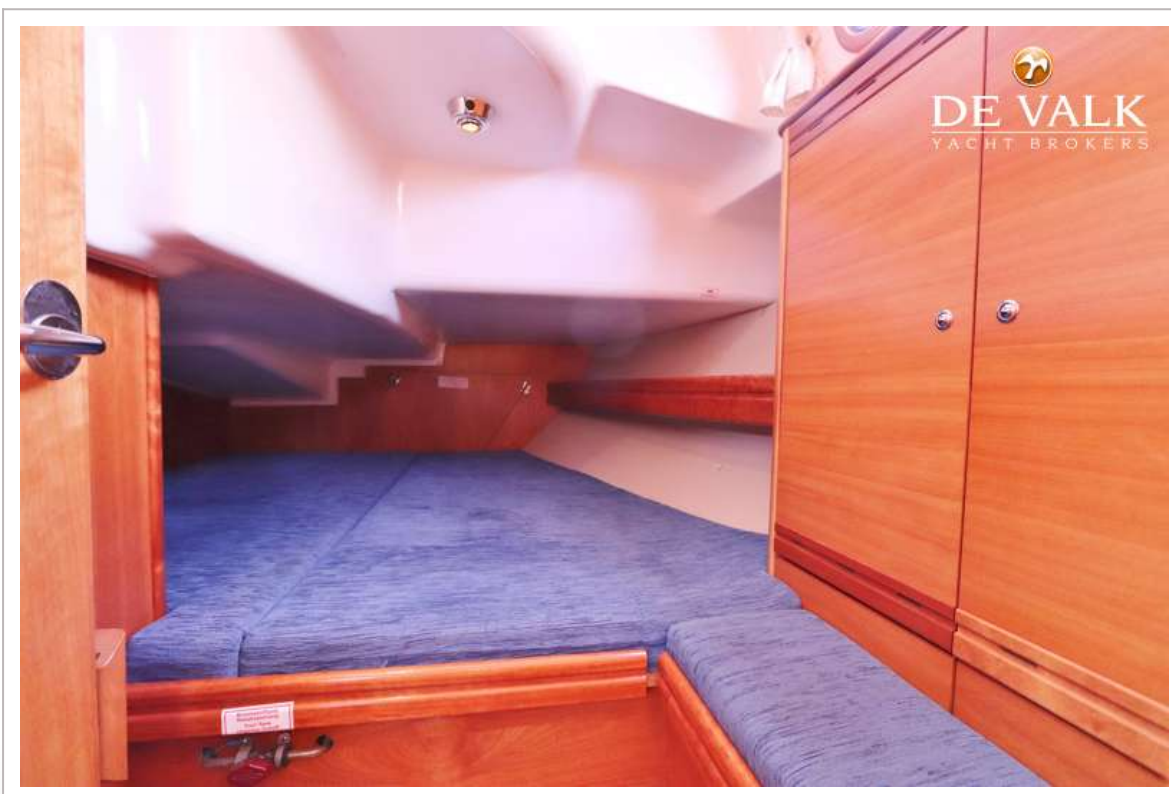
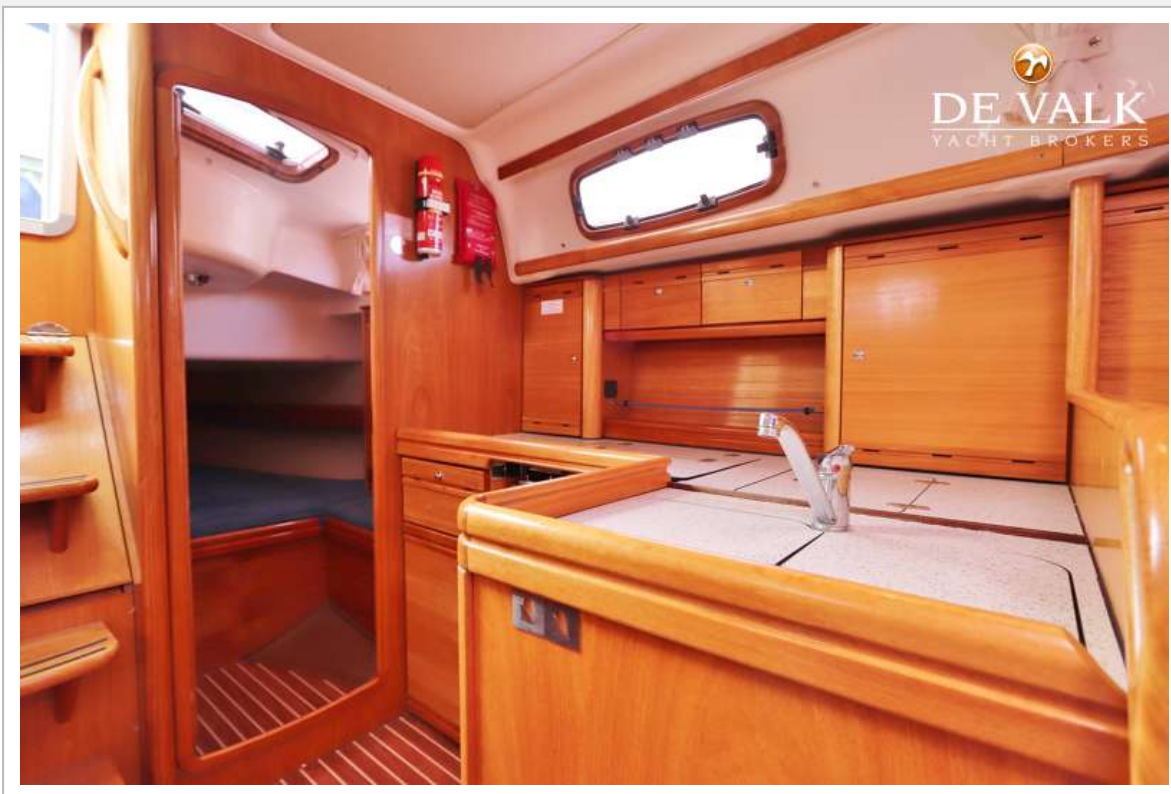
BAVARIA 37 CRUISER



BAVARIA 37 CRUISER



BAVARIA 37 CRUISER



BAVARIA 37 CRUISER

