



ONE OFF SAILING YACHT



ONE OFF SAILING YACHT

BROKER'S COMMENTS

BOREFT III is a classic beauty with a sturdy steel hull. Whether crossing oceans or cruising inland waters, Due to her deep and safe hidden cockpit she will bring her crew everywhere safely. This one off sailing yacht has been constantly meticulously maintained and refitted in the last couple of years. She is definitely worth a visit.

Henk Sijbranda

SPECIFICATIONS

Dimensions	15.00 x 4.00 x 1.83 (m)	Builder	Eltink Mook / Aquamar
Built	1968	Cabins	1
Material	Steel	Berths	7
Engine(s)	1 x Volvo Penta diesel	Hp/Kw	71.00 (hp), 52.00 (kw)
Asking price	sold (VAT)	Lying	contact Hindeloopen

CONTACT

Sales office	De Valk Hindeloopen B.V.	Telephone	+31 514 52 40 00
Address	Oosterstrand 1 8713 JS Hindeloopen NL	E-mail	hindeloopen@devalk.nl

DISCLAIMER

These particulars are given in good faith as supplied but cannot be guaranteed.



ONE OFF SAILING YACHT

GENERAL

Model	ONE OFF SAILING YACHT
Type	sailing yacht
LOA (m)	15,00
LWL (m)	12,00
Beam (m)	4,00
Draft (m)	1,83
Air draft (m)	18,50
Headroom (m)	2,10
Year built	1968
Builder	Eltink Mook / Aquamar
Country	The Netherlands
Designer	V.d. Høevell
Displacement (t)	20
Ballast (tonnes)	lead 5
CE norm	NA
Hull material	steel
Hull colour	off-white
Hull thickness (mm)	4 mm
Hull shape	S-bilged
Keel type	long keel
Superstructure material	mahogany
Superstructure (mm)	2 cm
Deck plate thickness (mm)	Teak (excl. Solid wood) 3-4 mm
Rubbing strake	wood
Deck material	teak
Deck finish	teak
Superstructure deck finish	non-skid paint
Cockpit deck finish	teak
Antifouling (year)	Winter 2018
Window frame	aluminium And wood



ONE OFF SAILING YACHT

Window material	perspex
Deckhatch	1x
Insulation	rockwool
Fuel tank (litre)	steel Ca. 400 ltr.
Level indicator (fuel tank)	yes
Freshwater tank (litre)	stainless steel Ca. 400 ltr.
Level indicator (freshwater)	yes
Blackwater tank (litre)	stainless steel Ca. 120 ltr.
Level indicator (blackwater)	yes
Blackwater tank extraction	deck extraction + pump
Greywater tank (litre)	stainless steel Ca. 120 ltr.
Level indicator (greywater)	yes
Wheel steering	cable steering
Emergency tiller	Yes

ACCOMMODATION

Cabins	1
Berths	7
Interior	mahogany
Floor	teak
Open cockpit	yes
Aft deck	yes
Doghouse	with attachable tent
Saloon	yes
Headroom saloon (m)	2.10
Heating	diesel ducted hot air Eberspracher
Navigation center	yes
Chart table	yes
Opening door to cockpit	yes
Galley	yes
Countertop	stainless steel



ONE OFF SAILING YACHT

Sink	stainless steel
Cooker	calor gas
Oven	yes
Fridge	yes
Freezer	yes
Hot water system	220V + engine
Water pressure system	electrical
Owners cabin	twin single
Bed length (m)	2 mtr.
Wardrobe	drawers and shelves
Bathroom	shared
Toilet	In the bathroom
Toilet system	manual
Wash basin	in the cabin
Shower	In the bathroom

MACHINERY

No of engines	1
Make	Volvo Penta
HP	71
kW	52,00
Fuel	diesel
Year installed	1968
Maximum speed (kn)	7,00
Cruising speed (kn)	7,00
Engine hours	5264
Engine cooling system	freshwater heat exchanger
Drive	shaft
Engine controls	bowden cable
Gearbox	mechanical
Exhaust	watercooled



ONE OFF SAILING YACHT

Propeller type	fixed
Propeller blades	3
Propeller shaft material	steel
Shaft lubrication	grease
Manual bilge pump	yes
Electric bilge pump	yes
Bilge alarm	yes
Electrical installation	12 / 220V
Generator	dry exhaust
Running hours generator	Ca. 100
Start battery	yes
Service battery	yes
Generator battery	yes
Windlass battery	yes
Battery charger	yes
Inverter	yes
Shorepower	with cable

NAVIGATION

Compass	Yes
Depth sounder	Yes
Windset	Yes
VHF	Yes
Plotter/GPS	Yes
Electronic chart(s)	Yes
AIS receiver	Yes
AIS transponder	Yes
Radio receiver	yes
Personal MOB transmitter	yes
Navigation lights	yes
Searchlight	yes



ONE OFF SAILING YACHT

EQUIPMENT

Fixed windscreen	yes
Sprayhood	yes
Sprayhood with grab rail	yes
Cockpit cover	yes
Winter cover	yes
Window cover	yes
Cockpit cushions	yes
Cockpit table	yes
Boarding ladder	stainless steel
Anchor	Bruce
Anchor chain	yes
Anchor 2	Aft anchor - manual
Windlass	electrical
Capstan	yes
Deck wash	yes
Dinghy	rigid hull
Outboard	yes
Sea railing	wire Stainless steel - new 2019
Grab rail (superstructure)	wood
Railing side opening gates	yes
Pushpit	yes
Pulpit	yes
Life raft	container New 2017
Safety harness	yes
Lifebuoy	yes
Safety lines on deck	yes
Radar reflector	yes
Fenders	yes
Mooring lines	yes
Spare parts	yes



ONE OFF SAILING YACHT

Tools	yes
Fire extinguisher	yes
Latest extinguisher survey	New 2019

RIGGING

Rigging	yawl
Standing rigging	wire
Brand mast	Huisman
Material mast	aluminium
Spreaders	One pair in both masts
Mainsail	yes
Mainsail cover	yes
Mizzen	yes
Mizzen sailcover	yes
Mizzen staysail	yes
Genoa	yes
Genoa cover	yes
Cutter furler	yes
Spinnaker	yes
Reefing System	slabreefing
Backstay adjuster	mechanical
Boomvang	tackle
Primary sheet winch	1x Lewmar England 48
Secondary sheet winch	2x Lewmar England 48
Genoa sheetwinches	2x Lewmar England 55
Halyard winches	4x Lewmar on the masts
Spi-pole	aluminium 2x



ONE OFF SAILING YACHT



ONE OFF SAILING YACHT



ONE OFF SAILING YACHT



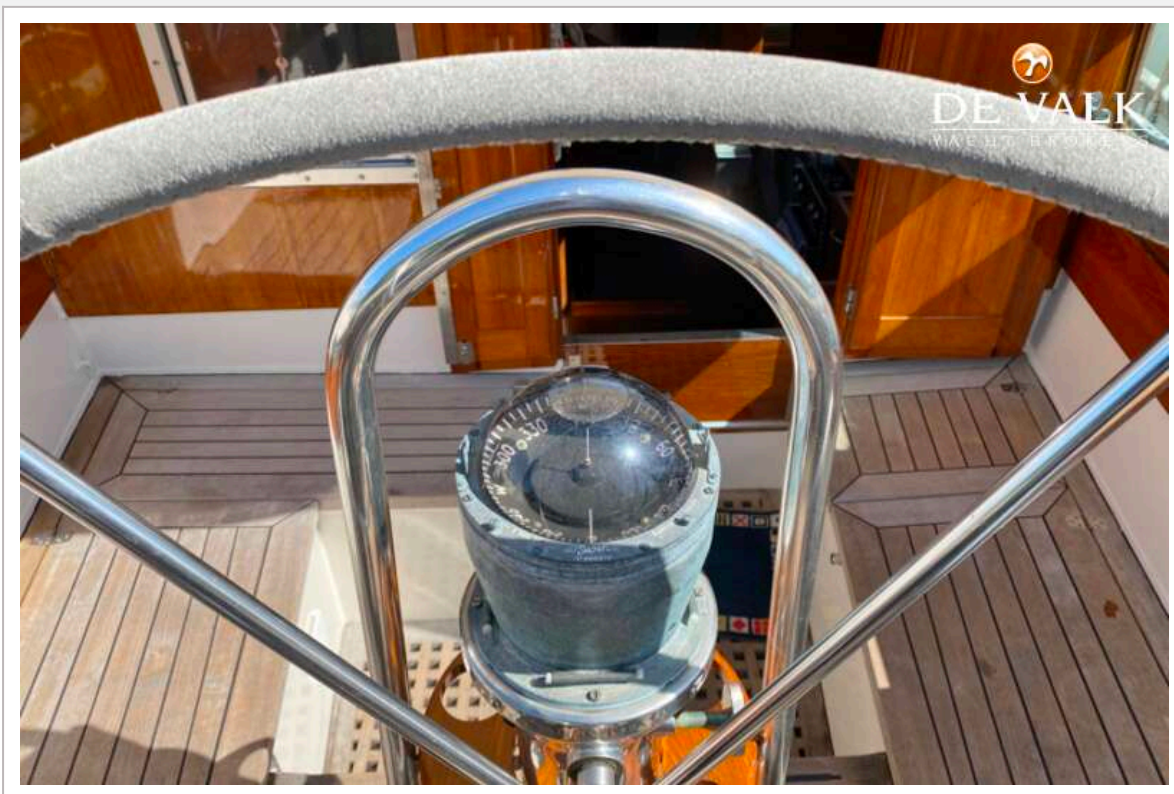
ONE OFF SAILING YACHT



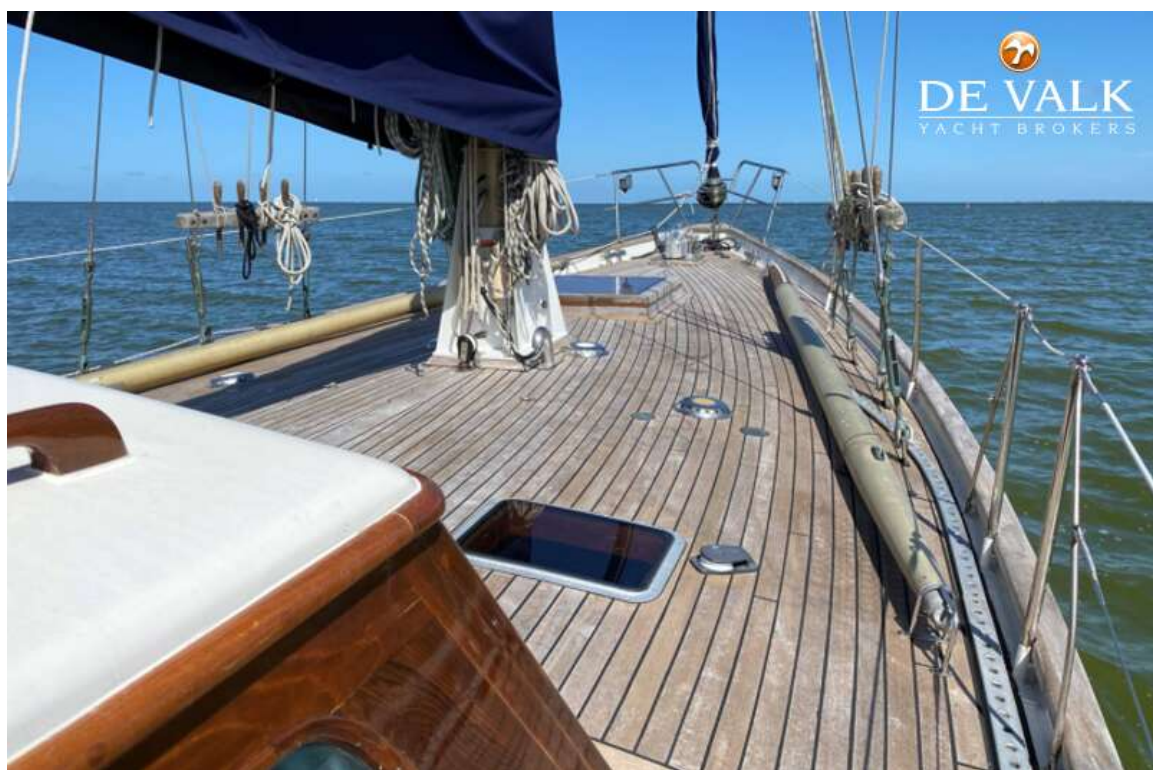
ONE OFF SAILING YACHT



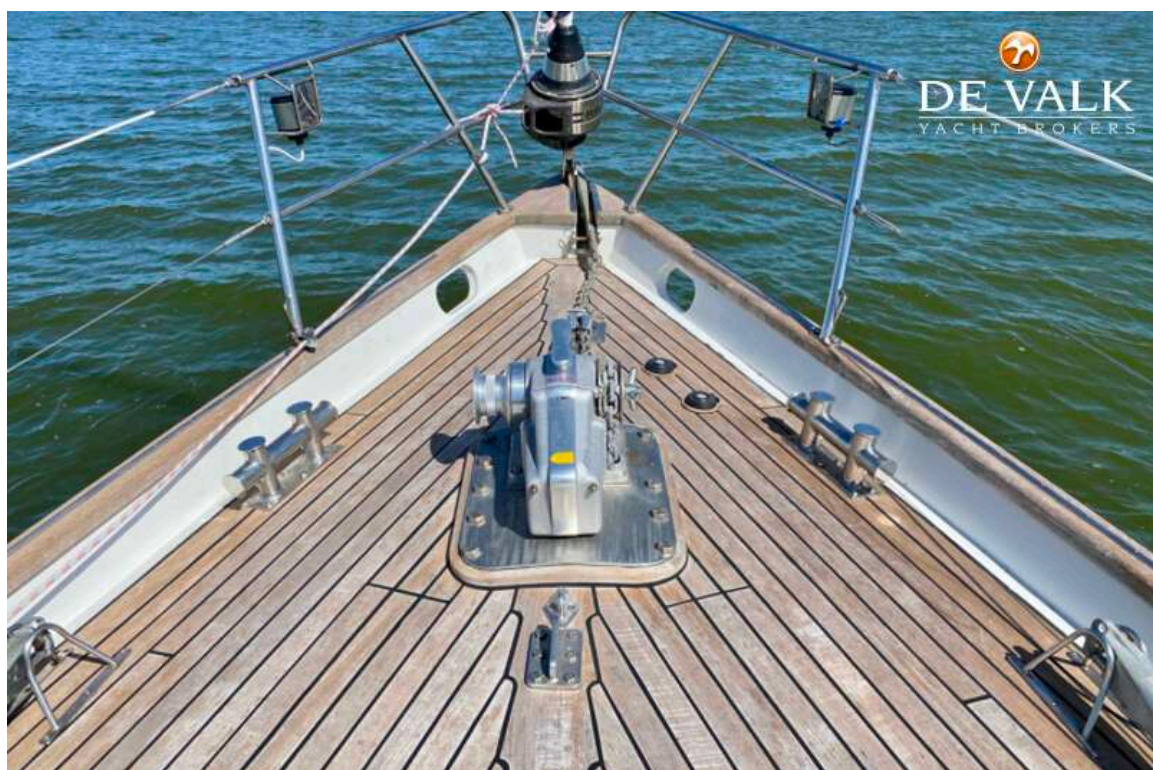
ONE OFF SAILING YACHT



ONE OFF SAILING YACHT



ONE OFF SAILING YACHT



ONE OFF SAILING YACHT



ONE OFF SAILING YACHT



ONE OFF SAILING YACHT



ONE OFF SAILING YACHT



ONE OFF SAILING YACHT



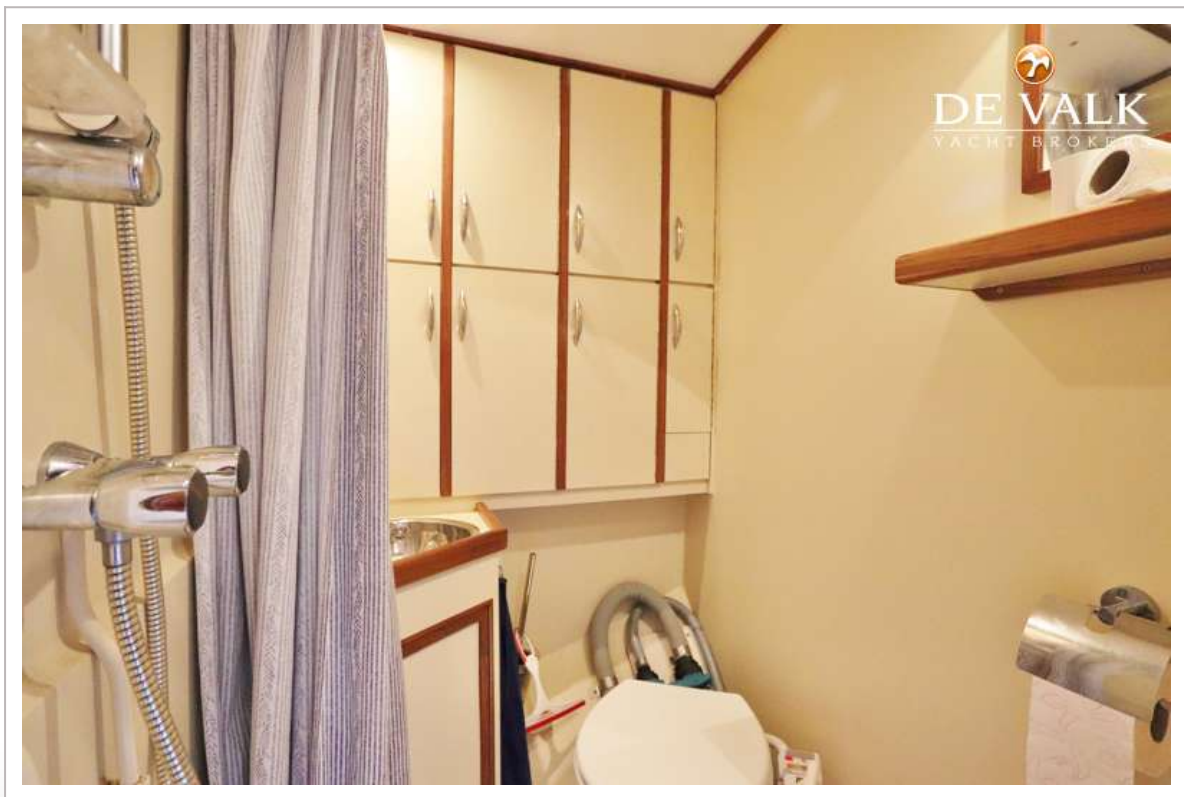
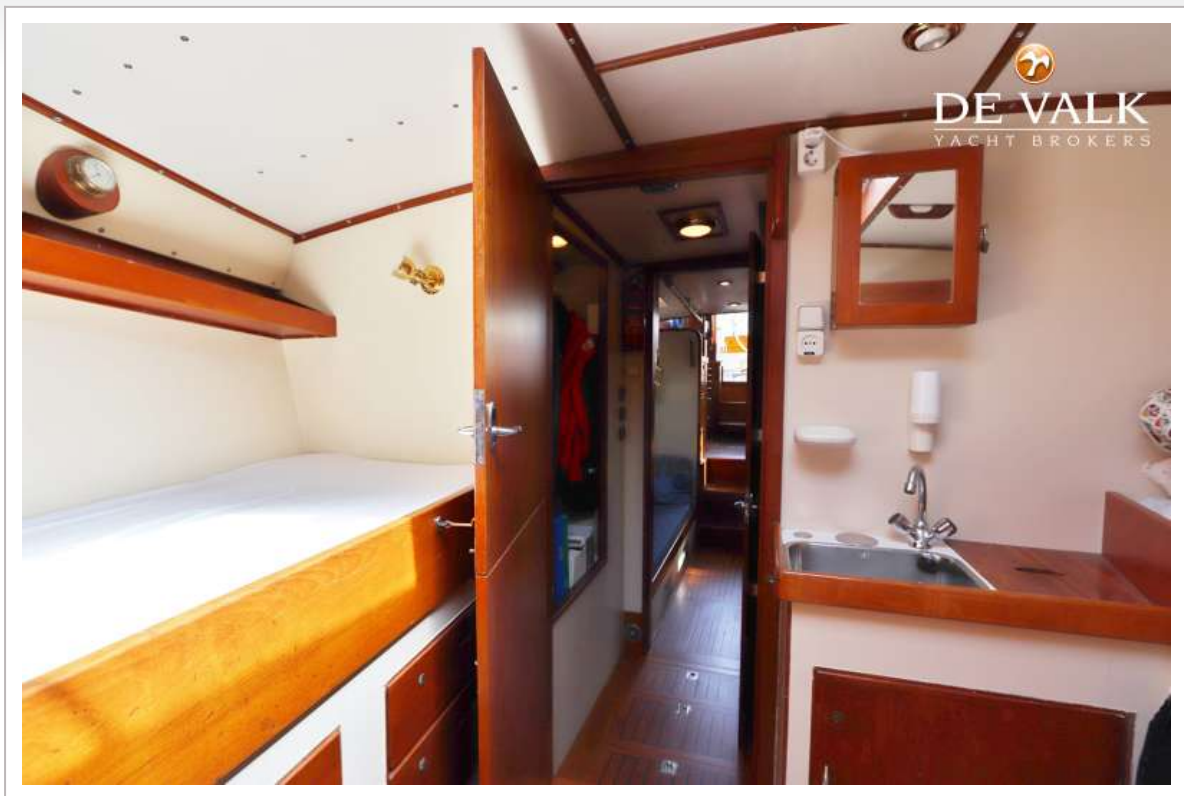
ONE OFF SAILING YACHT



ONE OFF SAILING YACHT



ONE OFF SAILING YACHT



ONE OFF SAILING YACHT



ONE OFF SAILING YACHT



ONE OFF SAILING YACHT

