



DE VALK
YACHT BROKERS

NORTH WIND 47



DE VALK
YACHT BROKERS

BROKER'S COMMENTS

This North wind 47 is nice designed. Overall very well maintained. Comes with a rich option list and many renewals done during the last years (such as new sails and new permateek). Sailing this true performance cruiser is an outstanding pleasure with a small crew, or even single handed; simply fast and reliable is the best way to describe her. Inside she offers a great living space and a very neat interior. Ready to go anywhere with her new owners!

Henk Sijbranda

SPECIFICATIONS

Dimensions	14.25 x 4.48 x 2.00 (m)	Builder	North Wind Yachts
Built	1991	Cabins	3
Material	GRP	Berths	7
Engine(s)	1 x Volvo Penta TMD 31B diesel	Hp/Kw	100.00 (hp), 73.00 (kw)
Asking price	sold (VAT)	Lying	elsewhere / Not at sales office

CONTACT

Sales office	De Valk Hindeloopen B.V.	Telephone	+31 514 52 40 00
Address	Oosterstrand 1 8713 JS Hindeloopen NL	E-mail	hindeloopen@devalk.nl

DISCLAIMER

These particulars are given in good faith as supplied but cannot be guaranteed.



GENERAL

Model	NORTH WIND 47
Type	sailing yacht
LOA (m)	14,25
LWL (m)	11,38
Beam (m)	4,48
Draft (m)	2,00
Year built	1991
Builder	North Wind Yachts
Country	Spain
Designer	Marcelo Penna
Displacement (t)	18
CE norm	NA
Hull material	GRP
Hull colour	white
Hull shape	round-bilged
Keel type	fin keel
Superstructure material	GRP AWL grip painted 2017
Deck material	GRP
Deck finish	synthetic teak - Permateek - 2017
Cockpit deck finish	synthetic teak
Antifouling (year)	2014
Dorades	In deckhatches
Window frame	aluminium
Deckhatch	7x
Fuel tank (litre)	stainless steel Ca 1000 liter
Fuel tank 2 (litre)	polyethylene 90 liter for heater
Level indicator (fuel tank)	yes
Freshwater tank (litre)	stainless steel Ca 600 liter
Blackwater tank (litre)	stainless steel 2x
Level indicator (blackwater)	yes



Blackwater tank extraction	deck extraction + pump
Wheel steering	cable steering Inside and outside (cable and hydraulic steering)
Inside helm position	yes
Outside helm position	
Emergency tiller	yes

ACCOMMODATION

Cabins	3
Berths	7
Interior	cherry
Floor	teak and holly
Deck saloon	yes
Headroom saloon (m)	1,90 meter
Heating	central heating Planar
Air-conditioning	Reverse cycle airco
Chart table	yes
Aft Cabin	yes
Dinette	yes
Galley	yes
Countertop	Duropol
Sink	stainless steel
Cooker	electric 4 burner (gas and electric)
Microwave/oven combi	Combi Bosch
Fridge	yes
Freezer	yes
Hot water system	220V or central heating Boiler 45 liter 2019
Water pressure system	
Manual and/or foot pump	yes
Owners cabin	French bed
Bed length (m)	2 meter
Wardrobe	hanging/drawers/shelves



Bathroom	en suite
Toilet	en suite
Toilet system	manual
Wash basin	in the bathroom
Shower	en suite
Guest cabin 1	v-bed
Bed length (m)	2 meter
Wardrobe	drawers
Bathroom	en suite
Toilet	shared
Toilet system	manual
Wash basin	in the cabin
Shower	shared
Guest cabin 2	twin single
Bed length (m)	2 meter
Wardrobe	hanging/drawers/shelves
Bathroom	shared
Toilet	shared
Toilet system	manual
Wash basin	in the bathroom
Shower	shared
Washing machine	AEG

MACHINERY

No of engines	1
Make	Volvo Penta
Type	TMD 31B
HP	100
kW	73,00
Fuel	diesel
Year installed	1991



Year of overhaul	2013
Maximum speed (kn)	8,00
Cruising speed (kn)	7,00
Consumption (l/hr)	5,00
Range (nm)	700
Engine hours	2900
Engine cooling system	freshwater heat exchanger
Drive	shaft
Engine controls	bowden cable
Gearbox	
Bowthruster	electric
Exhaust	watercooled
Propeller type	folding Flex-o-fold (new)
Propeller blades	3
Propeller shaft material	stainless steel
Shaft lubrication	water
Manual bilge pump	yes
Electric bilge pump	2x
Bilge alarm	yes
Generator	Prepared but not installed
Start battery	1x
Service battery	5x 150 Ah (2019)
Battery charger/inverter	Victron Phoenix multi plus 12/1200/50
Shorepower	with cable
Watermaker	Needs service

NAVIGATION

Compass	yes
Depth sounder	B&G Hydra
Depth sounder/log	B&G
Log	B&G



Windset	B&G
VHF	Sailor compact VHF RT2048
VHF handheld	yes
Autopilot	Raymarin drive - Cetrek control
Radar	yes
Navtex	yes
Radio receiver	yes

EQUIPMENT

Sprayhood	yes
Sprayhood with grab rail	yes
Cockpit cover	yes
Sun awning	yes
Cockpit cushions	yes
Cockpit table	yes
Bathing platform	yes
Boarding ladder	stainless steel
Anchor	CQR Plough
Anchor chain	yes
Anchor 2	
Windlass	
Capstan	yes
Davits	stainless steel
Sea railing	
Grab rail (superstructure)	
Railing side opening gates	yes
Pushpit	yes
Pulpit	yes
Life raft	Needs service
Horn	air pressure
Fenders	yes



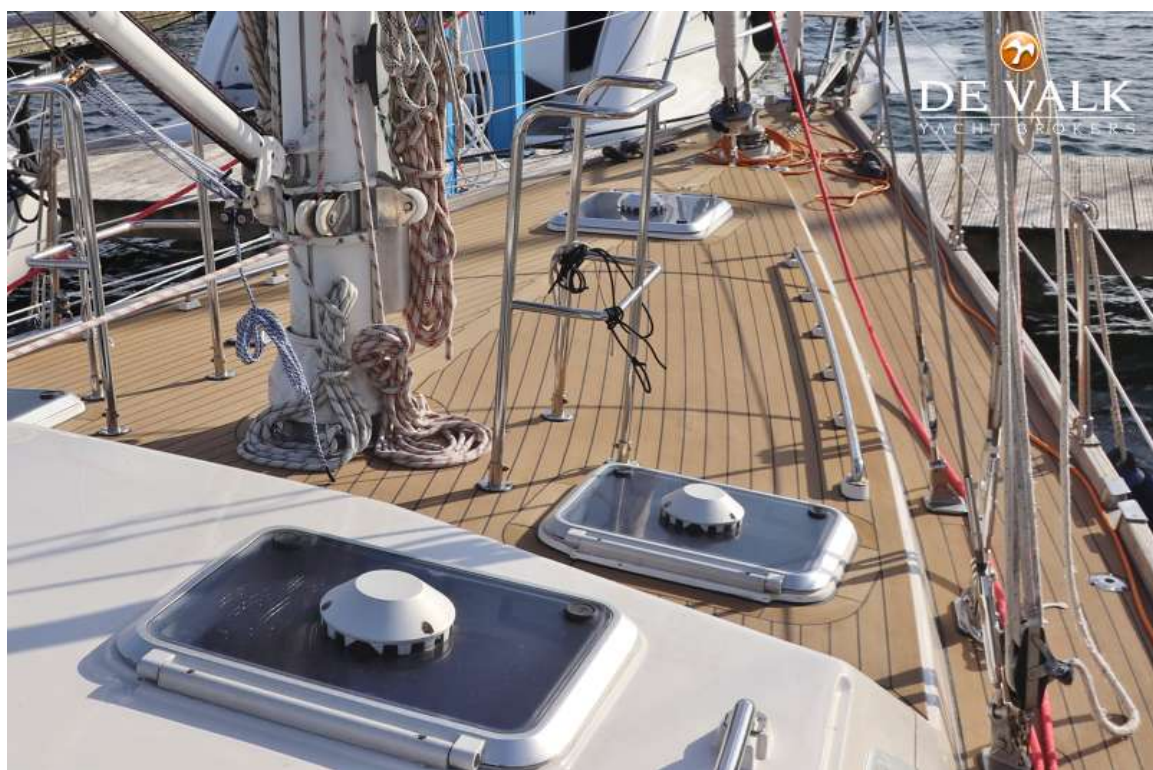
Mooring lines	yes
Spare parts	yes
Cockpit speakers	yes
Speakers in salon	yes
Clock - barometer	yes
Fire extinguisher	yes

RIGGING

Rigging	cutter
Standing rigging	wire
Brand mast	Proctor
Material mast	aluminium
Spreaders	2x
Keel stepped mast	yes
Mainsail	52 m² - 2017
Mainsail cover	yes
Fully battened mainsail	yes
Genoa furler	Harken
Cutter furler	Harken
Gennaker	133 m² - 2017
Staysail	20.5 m² - 2017
Yankee	40 m² - 2017
Reefing System	slabreefing
Backstay adjuster	hydraulic
Boomvang	mechanical and tackle
Primary sheet winch	yes
Secondary sheet winch	yes
Halyard winches	yes
Spi-pole	



NORTH WIND 47



NORTH WIND 47



NORTH WIND 47



NORTH WIND 47



NORTH WIND 47



NORTH WIND 47



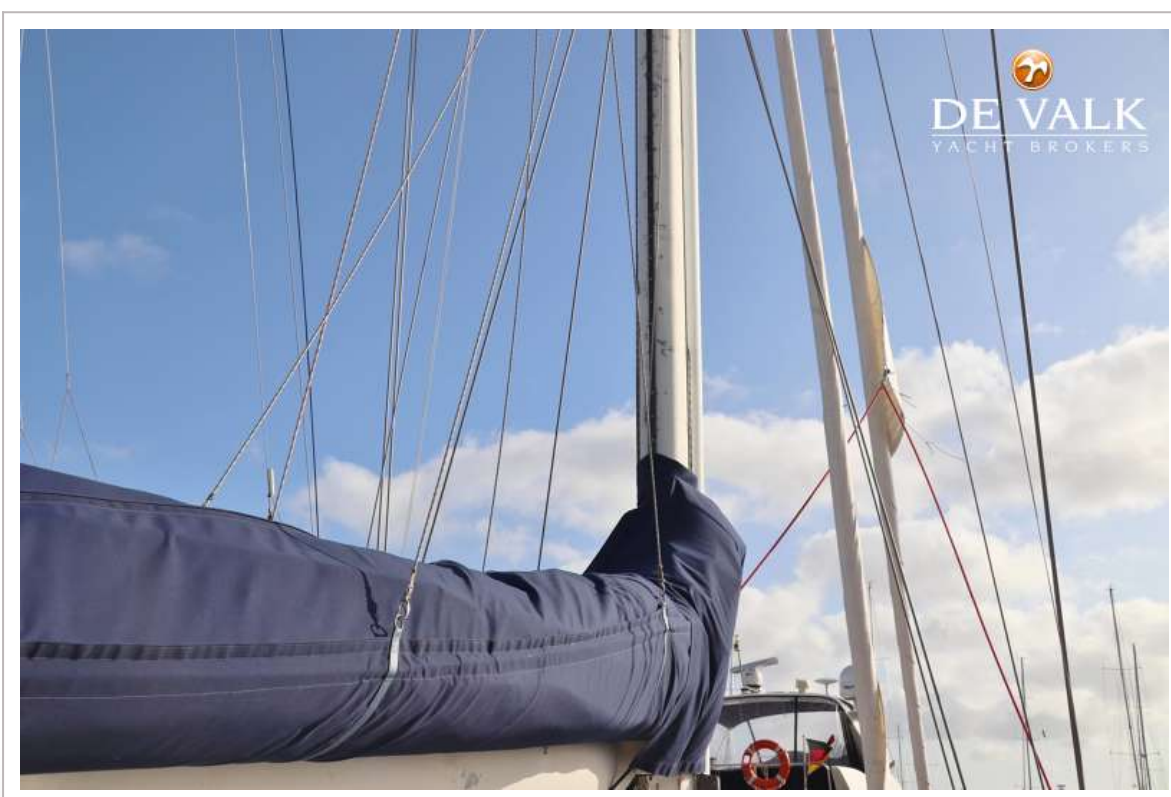
NORTH WIND 47



NORTH WIND 47



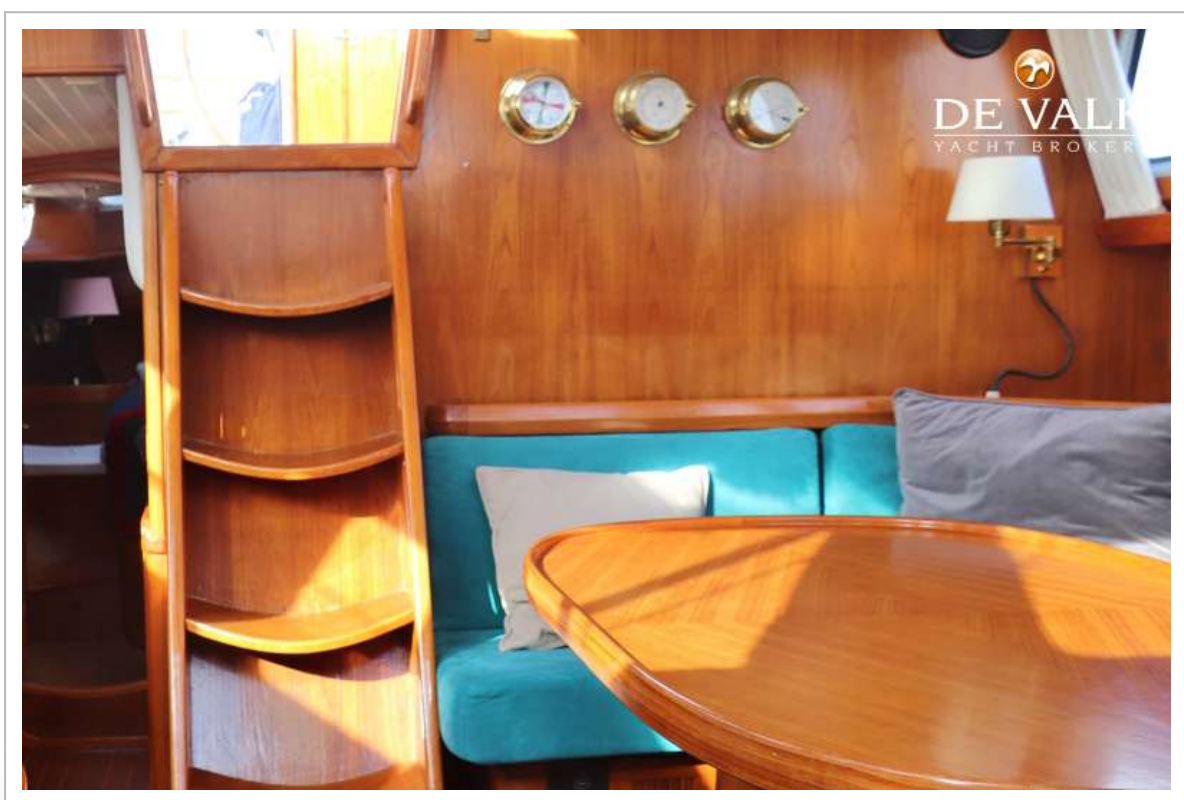
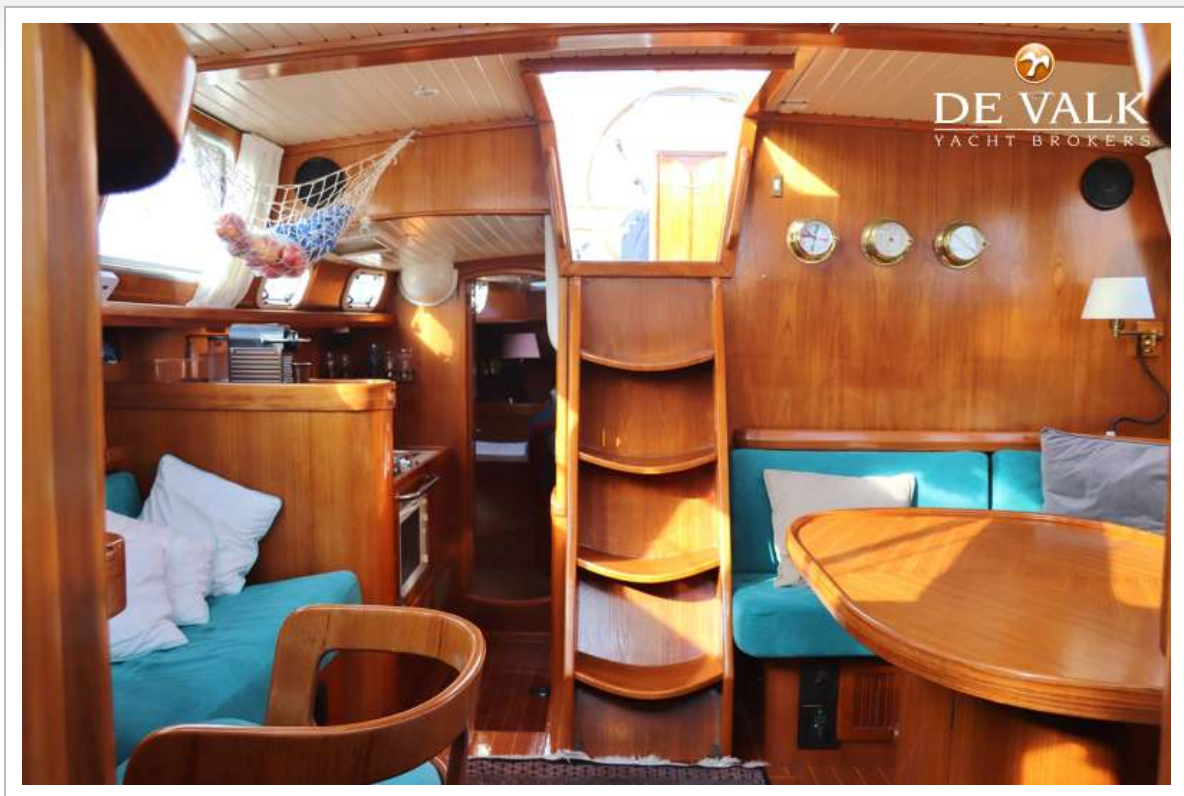
NORTH WIND 47



NORTH WIND 47



NORTH WIND 47



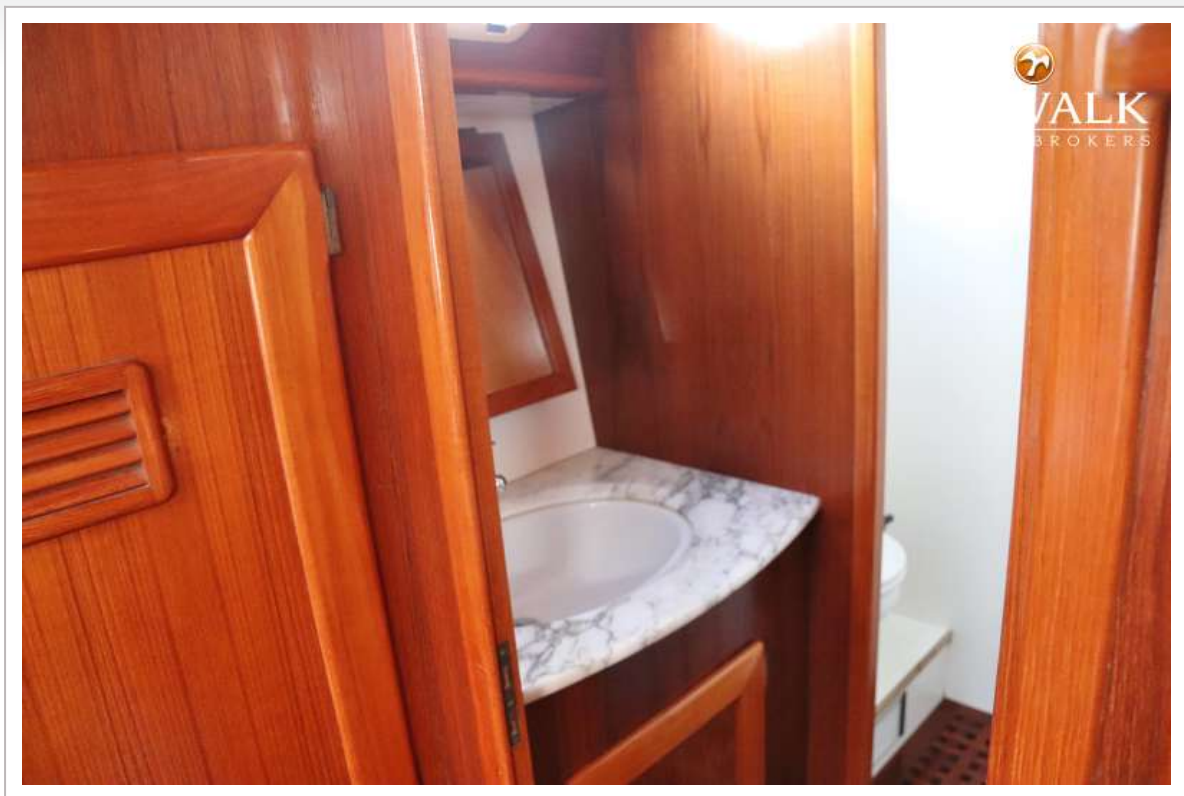
NORTH WIND 47



NORTH WIND 47



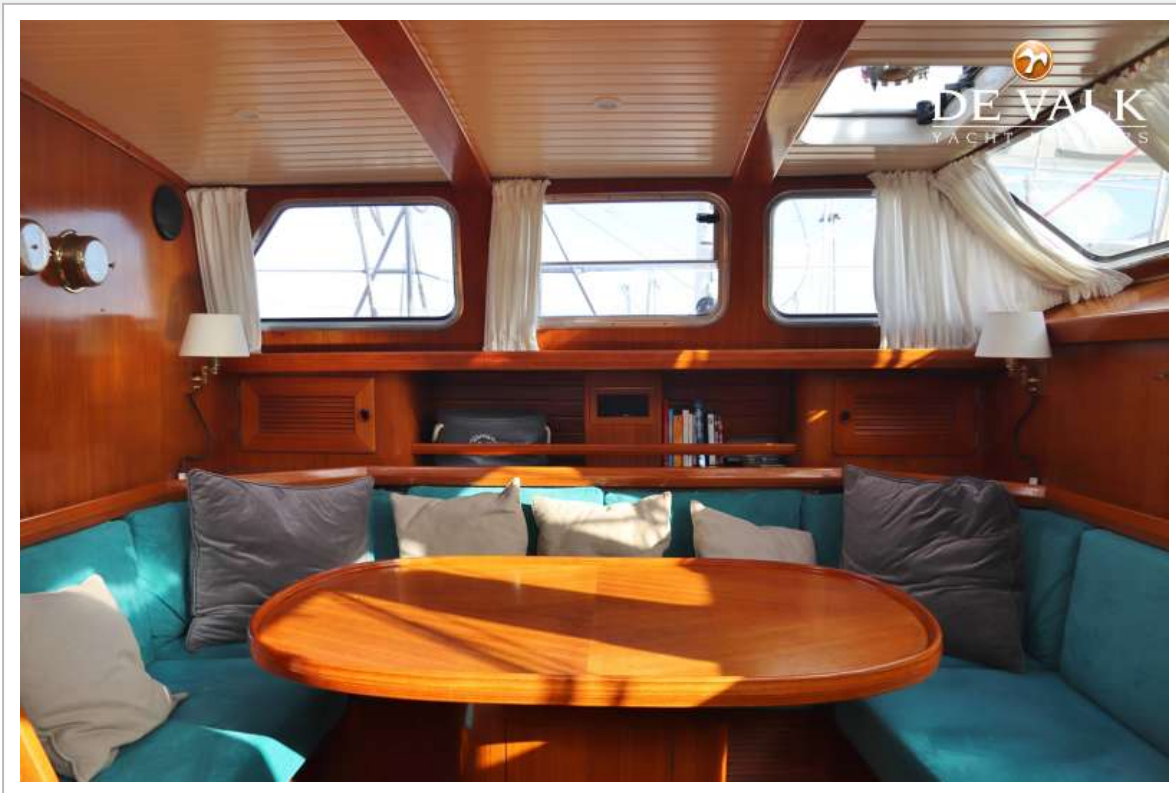
NORTH WIND 47

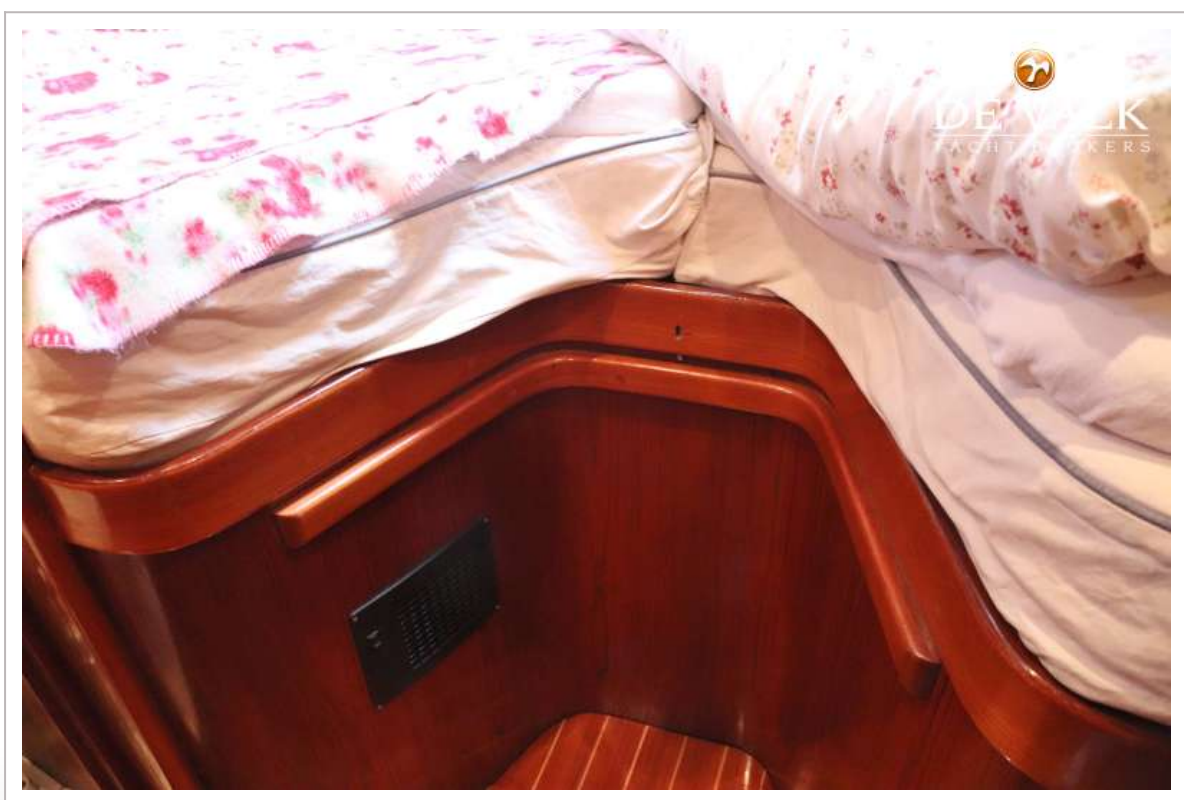


NORTH WIND 47



NORTH WIND 47





NORTH WIND 47



