



DE VALK
YACHT BROKERS



HANSE 341



DE VALK
YACHT BROKERS

BROKERAGE | CHARTER | BERTHS | FINANCE | INSURANCE | YACHT MANAGEMENT

BROKER'S COMMENTS

This very well maintained Hanse 341, from the well known Hanse Yard in Germany. The Hanse 341 is an innovative design. The modern interior offers lots of space below decks with her three cabin layout and ample seating in saloon. Shiny woodwork with enough storage space throughout. Her deck layout with self-tacking jib and wheel steering makes her very easy to handle. "Blue wave" is now ready to be inspected 7 days a week in our sales harbour in Hindeloopen.

Henri van Eelen

SPECIFICATIONS

Dimensions	10.35 x 3.40 x 1.55 (m)	Builder	
Built	2002	Cabins	3
Material	GRP	Berths	6
Engine(s)	1 x Volvo Penta MD2020 EBD diesel	Hp/Kw	19.00 (hp), 13.00 (kw)
Asking price	sold (VAT)	Lying	contact Hindeloopen

CONTACT

Sales office	De Valk Hindeloopen B.V.	Telephone	+31 514 52 40 00
Address	Oosterstrand 1 8713 JS Hindeloopen NL	E-mail	hindeloopen@devalk.nl

DISCLAIMER

These particulars are given in good faith as supplied but cannot be guaranteed.



GENERAL

Model	HANSE 341
Type	sailing yacht
LOA (m)	10,35
Beam (m)	3,40
Draft (m)	1,55
Year built	2002
Launched	04-2003
Country	Germany
Designer	Judel & Vrolijk
Displacement (t)	5,8
Ballast (tonnes)	cast iron 1,8
CE norm	A
Hull material	GRP
Hull colour	blue Awl gripp Aristo blue
Hull shape	round-bilged
Keel type	fin keel
Superstructure material	GRP
Rubbing strake	plastic
Deck material	GRP
Deck finish	teak
Cockpit deck finish	teak
Antifouling (year)	2019 International
Dorades	yes
Window frame	aluminium
Window material	perspex
Deckhatch	yes
Fuel tank (litre)	stainless steel 68
Level indicator (fuel tank)	yes
Freshwater tank (litre)	polyethylene 220
Level indicator (freshwater)	yes



Blackwater tank (litre)	polyethylene 45
Wheel steering	mechanical
Emergency tiller	yes

ACCOMMODATION

Cabins	3
Berths	6
Interior	cherry
Floor	teak and holly
Open cockpit	yes
Headroom saloon (m)	1,90
Heating	diesel ducted hot air 2013 Webasto Air Top 3900
Galley	yes
Countertop	corian
Sink	stainless steel
Cooker	2014
Oven	2014
Hot water system	220V + engine New Boiler 2015
Water pressure system	electrical
Crockery	yes
Owners cabin	v-bed Front
Bed length (m)	2,0
Wardrobe	hanging and shelves
Bathroom	shared
Toilet	shared
Toilet system	manual
Wash basin	at the toilet
Shower	shared
Guest cabin 1	double bed Rear
Bed length (m)	2,0
Wardrobe	hanging and shelves



Guest cabin 2	double bed Rear
Bed length (m)	2,0
Wardrobe	hanging and shelves

MACHINERY

No of engines	1
Make	Volvo Penta
Type	MD2020 EBD
HP	19
kW	13,00
Fuel	diesel
Maximum speed (kn)	6,00
Cruising speed (kn)	5,00
Consumption (l/hr)	3,00
Engine cooling system	freshwater heat exchanger
Drive	sail-drive
Engine controls	manual
Gearbox	mechanical
Bowthruster	electric
Propeller type	feathering 2009 Variprofile
Propeller blades	3 14 x 11 x 9
Manual bilge pump	yes
Electric bilge pump	yes
Start battery	2012 1x 70 Ah
Service battery	2015 2x 95 Ah
Battery charger	2007 Calira LG 630
Inverter	yes
Shorepower	with cable

NAVIGATION

Compass	yes
---------	-----



Depth sounder	Simrad IS 15
Depth sounder/log	Simrad IS 15
Log	Simrad IS 15
Windset	Simrad IS 15
Repeater	Simrad IS 15
VHF	Simrad RD 68
Autopilot	2009 Raymarine ST 6002
Rudder angle indicator	2009 Raymarine SPX
GPS	Furuno GPS 32
Plotter	2012 Raymarine E7 touchscreen
Electronic chart(s)	2014 Platinum 15p / 2015
AIS receiver	AIS 350 Raymarine

EQUIPMENT

Sprayhood with grab rail	2011 Blue
Cockpit cover	Blue
Cockpit table	yes
Boarding ladder	stainless steel
Bow ladder	2011
Anchor	Delta 10 Kg
Anchor chain	40m 8mm
Anchor 2	Rear anchor Stainless steel
Pushpit	yes
Pulpit	yes
Life raft	container Plastimo
Life raft (pers)	container 6
Last life raft survey	2008
Radar reflector	yes
Fenders	yes
Mooring lines	yes
Spare parts	yes



Radio	JVC KD-G721
Speakers in salon	2006
Clock - barometer	yes
Fire extinguisher	yes

RIGGING

Rigging	sloop
Standing rigging	wire
Brand mast	Seldén
Material mast	aluminium
Spreaders	2 Pair
Mainsail	2012 North Sails 61m2
Mainsail cover	yes
Battcars	yes
Fully battened mainsail	yes
Jib	2012 North sails
Genoa	yes
Genoa furler	yes
Gennaker	2014 85m2 with rocon
Stormjib	Red, never used
Self tacking jib installation	2012
Reefing System	quick-one-line-reefing
Backstay adjuster	mechanical
Boomvang	mechanical
Primary sheet winch	yes
Genoa sheetwinches	2x Harken ST40
Multifunctional winches	halyard/sheet winches 2x Harken ST40



HANSE 341



HANSE 341



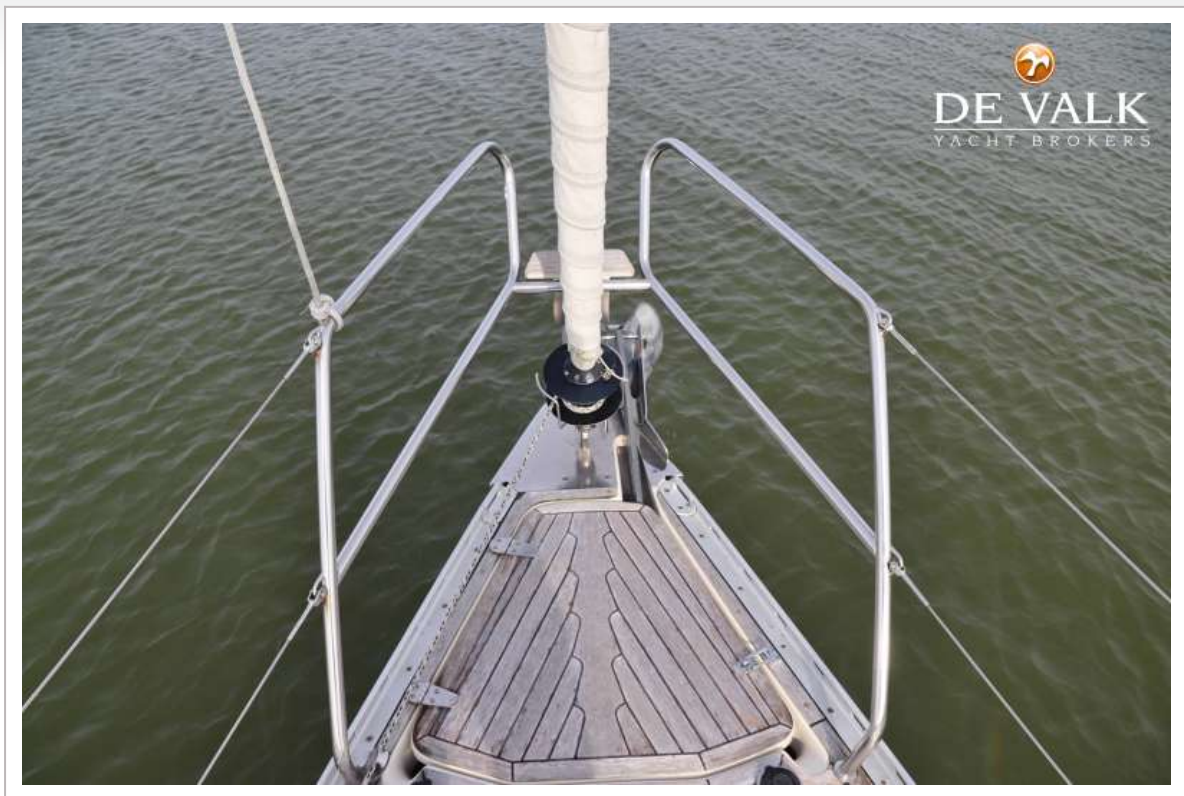
HANSE 341



HANSE 341



HANSE 341



HANSE 341



HANSE 341



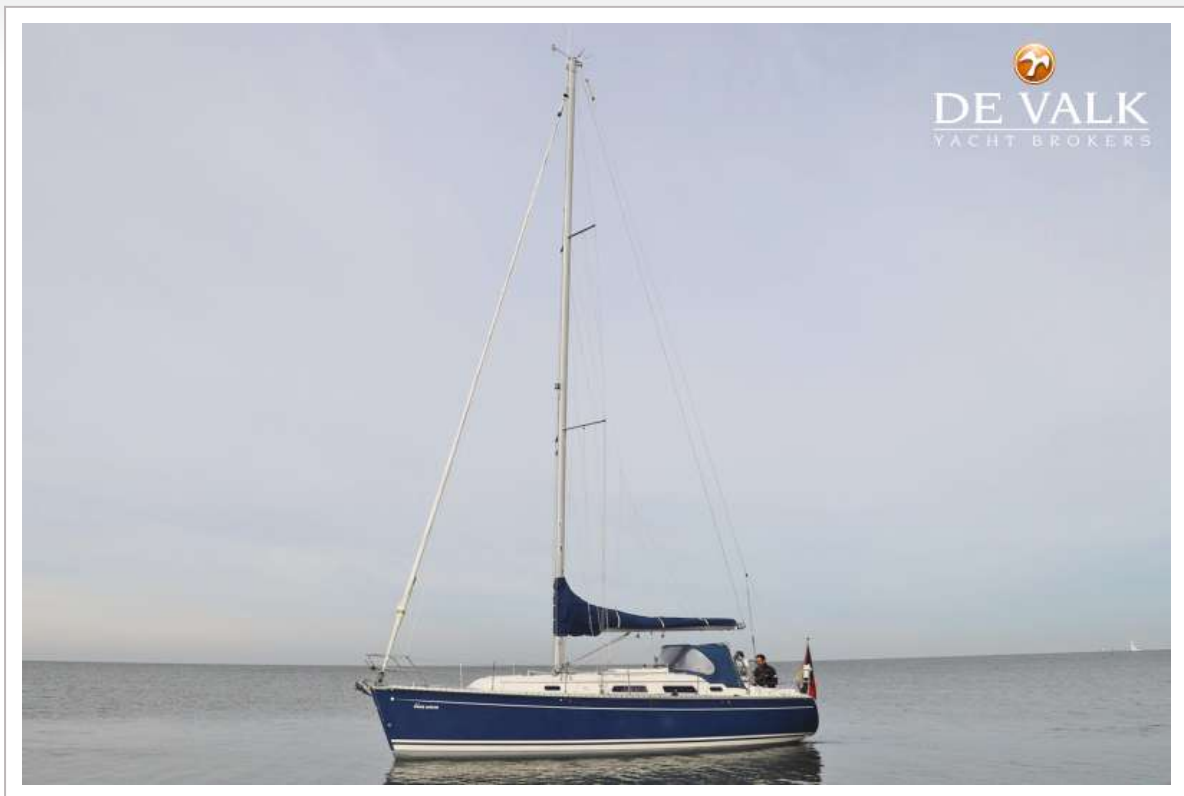
HANSE 341



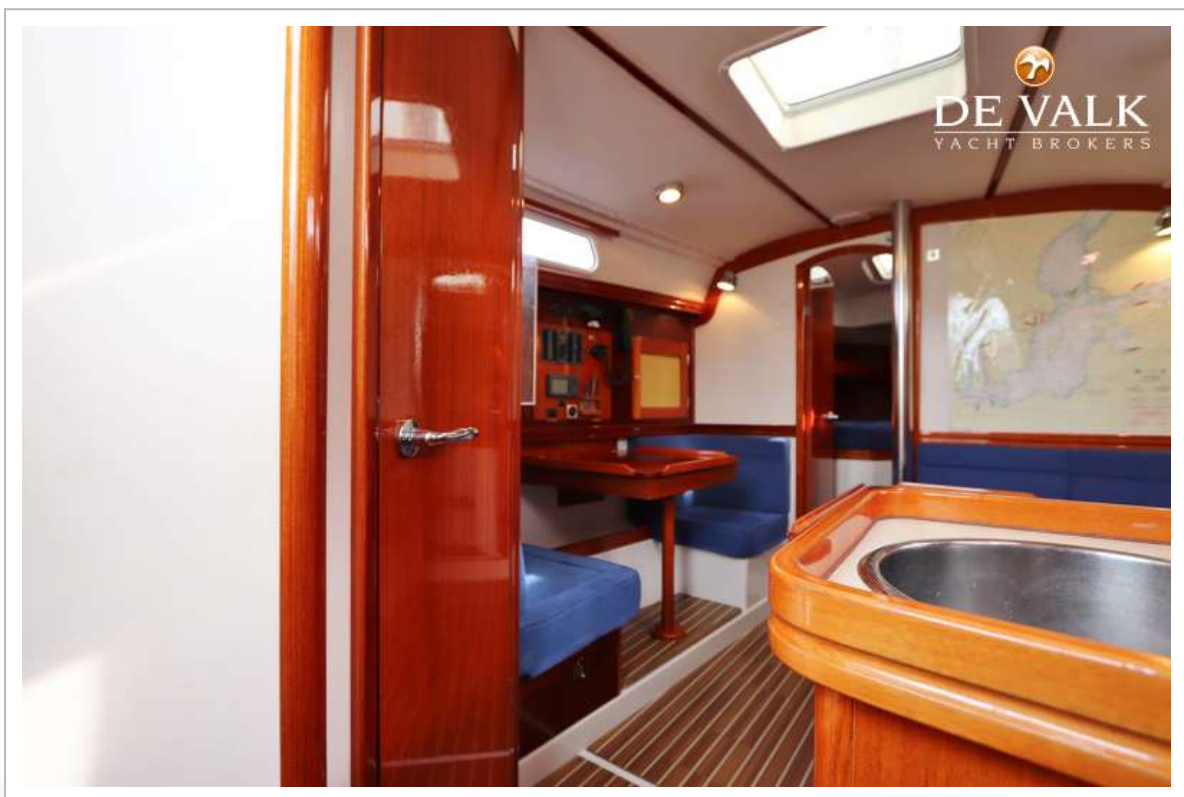
HANSE 341



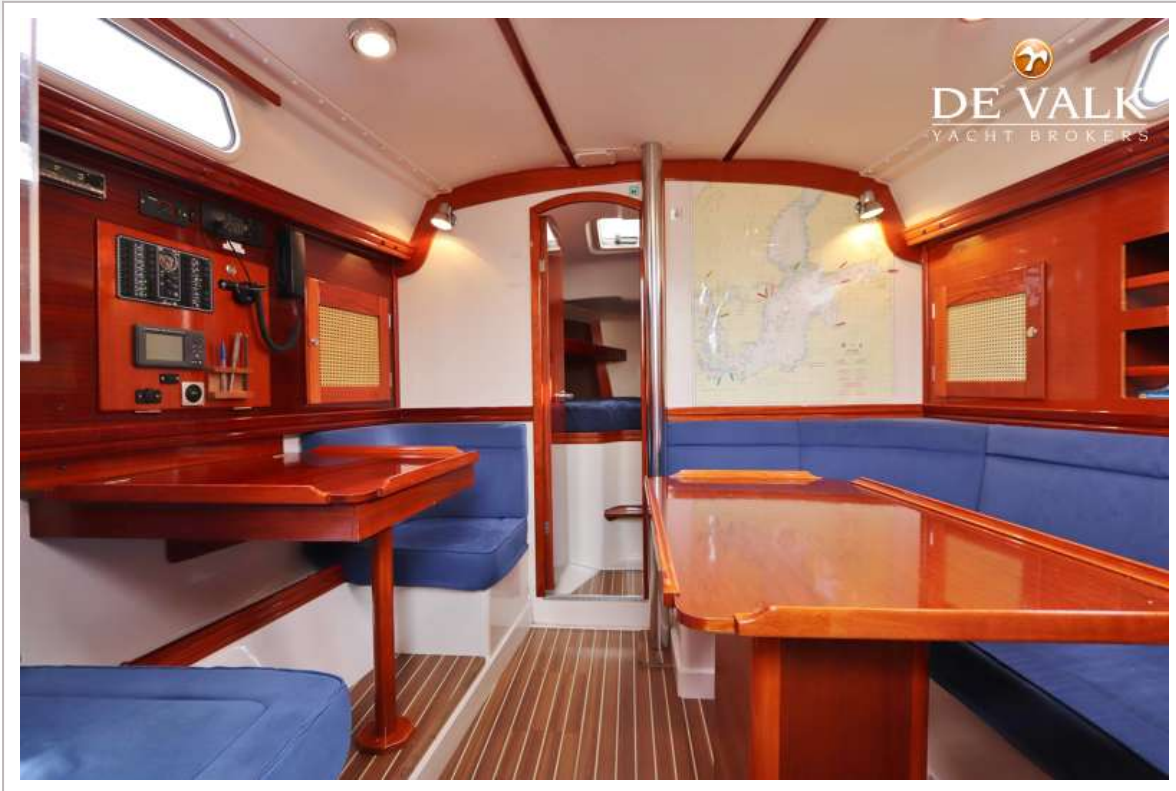
HANSE 341



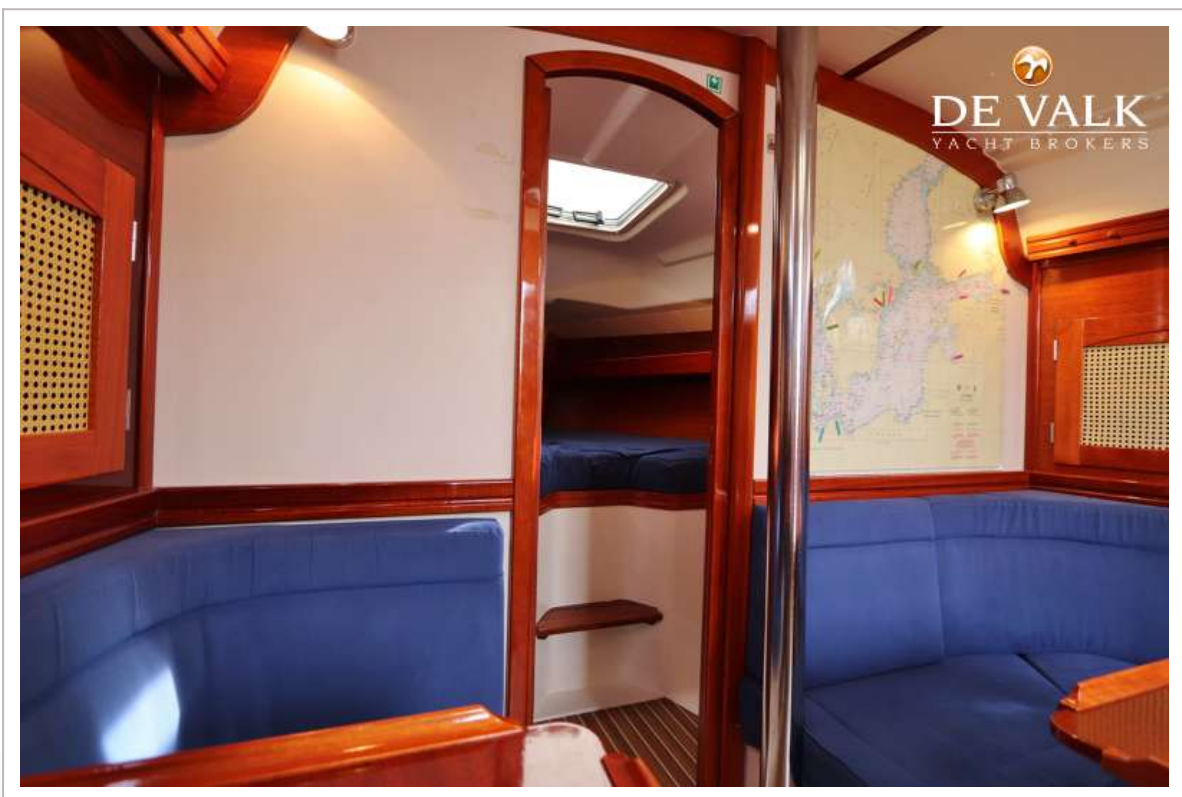
HANSE 341



HANSE 341



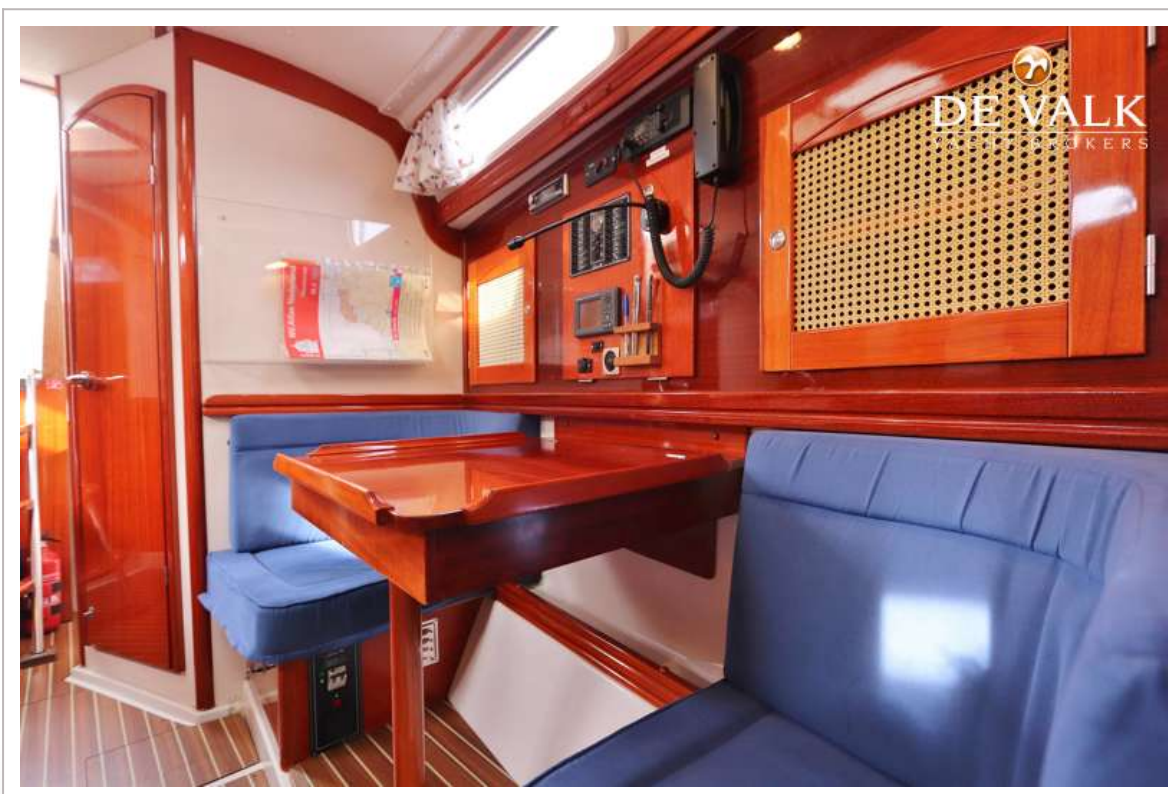
HANSE 341



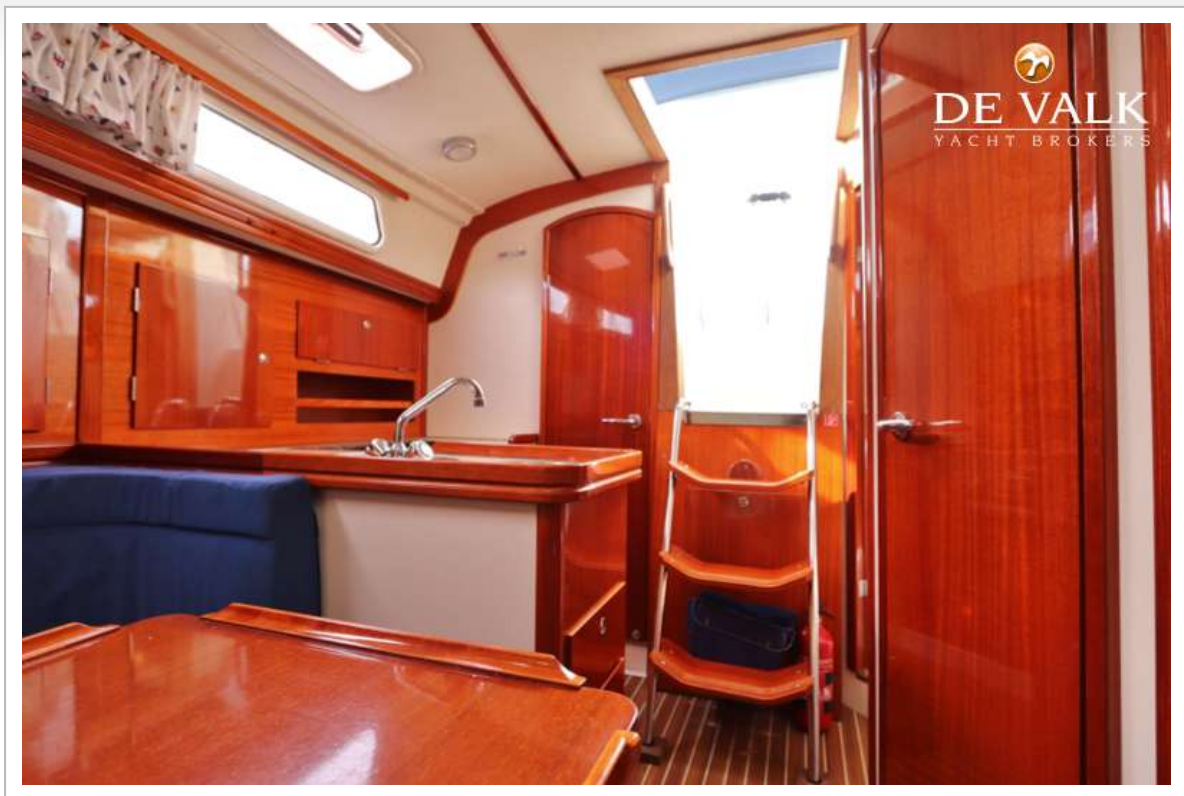
HANSE 341

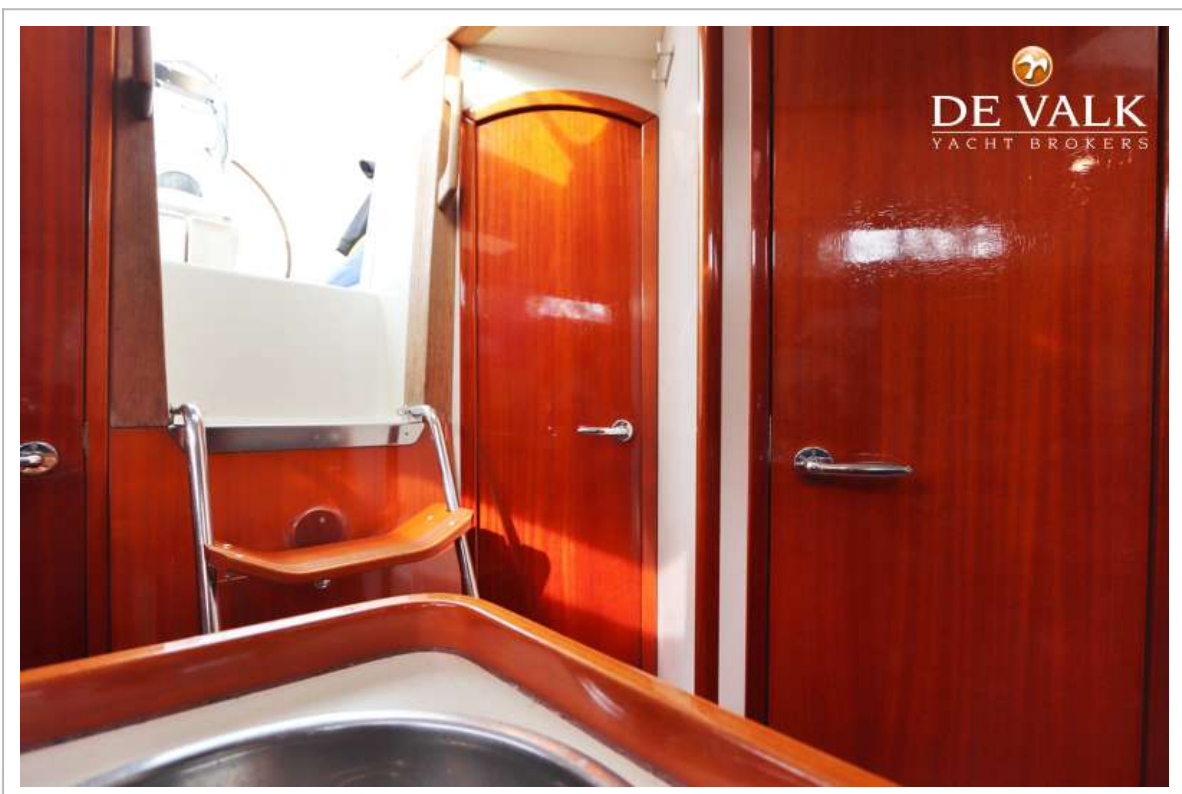


HANSE 341



HANSE 341





HANSE 341



HANSE 341

