



## BAVARIA CRUISER 41 BLUE EDITION

# BAVARIA CRUISER 41 BLUE EDITION

## BROKER'S COMMENTS

With a mere 300 running hours on the clock, this Bavaria Cruiser 41 Blue Edition from 2017 is ideal if you're looking for a new sailing yacht and don't want to wait for the build. Superbly maintained and equipped, this three-cabin beauty includes a bowthruster, up-to-date navigation equipment from Garmin, twin steering wheels, a folding swim platform and an extra-long Bimini. She is ready for viewing seven days a week at our location in Hindeloopen!

*Henri van Eelen*

## SPECIFICATIONS

<b>Dimensions</b>	12.35 x 3.96 x 2.05 (m)	<b>Builder</b>	Bavaria Yachts
<b>Built</b>	2017	<b>Cabins</b>	3
<b>Material</b>	GRP	<b>Berths</b>	6
<b>Engine(s)</b>	1 x Volvo Penta D2-40 diesel	<b>Hp/Kw</b>	38.00 (hp), 27.00 (kw)
<b>Asking price</b>	sold (VAT )	<b>Lying</b>	at sales office

## CONTACT

<b>Sales office</b>	De Valk Hindeloopen B.V.	<b>Telephone</b>	+31 514 52 40 00
<b>Address</b>	Oosterstrand 1 8713 JS Hindeloopen NL	<b>E-mail</b>	hindeloopen@devalk.nl

## DISCLAIMER

These particulars are given in good faith as supplied but cannot be guaranteed.



# BAVARIA CRUISER 41 BLUE EDITION

## GENERAL

Model	BAVARIA CRUISER 41 BLUE EDITION
Type	sailing yacht
LOA (m)	12,35
LWL (m)	10,75
Beam (m)	3,96
Draft (m)	2,05
Air draft (m)	18,00
Headroom (m)	2,00
Year built	2017
Launched	2018
Builder	Bavaria Yachts
Country	Germany
Designer	Farr Yacht Design
Displacement (t)	8,6
Ballast (tonnes)	2,7
CE norm	A
Hull material	GRP
Hull colour	white
Hull shape	round-bilged
Keel type	fin keel with bulb
Superstructure material	GRP
Rubbing strake	aluminum
Deck material	GRP
Deck finish	non-skid moulded in
Superstructure deck finish	non-skid moulded in
Cockpit deck finish	teak
Window frame	aluminium - stainless steel and glued
Window material	tempered glass
Deckhatch	8x Lewmar
Portholes	7x Lewmar



# BAVARIA CRUISER 41 BLUE EDITION

Fuel tank (litre)	polyethylene Ca. 210 ltr.
Level indicator (fuel tank)	yes
Freshwater tank (litre)	polyethylene 1x ca. 150 ltr. 1x ca. 210 ltr.
Level indicator (freshwater)	yes
Level indicator (blackwater)	yes
Blackwater tank extraction	deck extraction + uw line 2x ca. 70 ltr.
Wheel steering	rack & pinion Jefa Steering
Emergency tiller	yes

## ACCOMMODATION

Cabins	3
Berths	6
Interior	teak
Layout	Two aft cabins with shared bathroom, owners cabin in front with bathroom en suite. Saloon with big settee and galley
Floor	teak and holly
Open cockpit	With teakdeck
Saloon	yes
Headroom saloon (m)	2 mtr.
Heating	diesel ducted hot air Webasto Air Top Evo 40
Chart table	yes
Aft Cabin	2x
Galley	yes
Countertop	Duropol
Sink	stainless steel
Cooker	calor gas 2 burner - Allpa
Oven	In cooker
Microwave	Bosch
Fridge	- Waeco - 109 ltr. - Isotherm
Freezer	In Fridge
Hot water system	220V + engine Sigmar-Quick boiler



# BAVARIA CRUISER 41 BLUE EDITION

Water pressure system	electrical
Owners cabin	v-bed
Bed length (m)	2 mtr.
Wardrobe	hanging and shelves
Bathroom	en suite
Toilet	Jabsco
Toilet system	manual
Wash basin	Yes
Shower	Yes
Guest cabin 1	double bed
Bed length (m)	2 mtr.
Wardrobe	hanging and shelves
Guest cabin 2	double bed
Bed length (m)	2 mtr.
Wardrobe	hanging and shelves
Bathroom	shared
Toilet	Jabsco
Toilet system	electric
Wash basin	Yes
Shower	Yes

## MACHINERY

No of engines	1
Make	Volvo Penta
Type	D2-40
HP	38
kW	27,00
Fuel	diesel
Year installed	2017
Maximum speed (kn)	7
Cruising speed (kn)	6



# BAVARIA CRUISER 41 BLUE EDITION

Engine hours	300
Engine cooling system	freshwater heat exchanger
Drive	sail-drive
Engine controls	bowden cable
Gearbox	mechanical
Bowthruster	electric Side Power
Exhaust	watercooled
Propeller type	fixed
Propeller blades	3
Manual bilge pump	Whale Smartbail 5021B
Electric bilge pump	Whale Supersub 1100
Electrical installation	12 / 220 V
Start battery	1x 70Ah
Service battery	3 x 95 Ah
Bowthruster battery	1x 95Ah
Battery charger	Cristec Automatic battery charger 12V/40A
Shorepower	with cable

## NAVIGATION

Depth sounder	Data from: 2x Garmin GMI 20
Log	Data from: 2x Garmin GMI 20
Windset	Data from: 2x Garmin GMI 20
VHF	Garmin GHS 10i
Autopilot	Garmin GHC 20 Control unit
Plotter	Garmin GPSmap 820
AIS receiver	Garmin VHF 300i AIS
Navigation lights	yes

## EQUIPMENT

Sprayhood with grab rail	yes
Bimini	Extra long



# BAVARIA CRUISER 41 BLUE EDITION

Winter cover	never used
Cockpit cushions	yes
Cockpit table	yes
Bathing platform	foldable
Boarding ladder	stainless steel
Deck shower	yes
Anchor	Delta
Anchor chain	50m
Windlass	electrical Quick
Sea railing	wire
Grab rail (superstructure)	stainless steel
Railing side opening gates	yes
Pushpit	yes
Pulpit	yes
Fenders	yes
Mooring lines	yes
TV	22" in Salon
Radio	FUSION Marine soundsystem
Cockpit speakers	yes
Speakers in salon	yes
Clock - barometer	yes
Fire extinguisher	yes

## RIGGING

Rigging	fractional
Standing rigging	wire
Brand mast	Seldén
Material mast	aluminium
Spreaders	2 pair
Mainsail	Elvstrøm Sails - ca. 43 m <sup>2</sup>
Stoway mast	yes



# BAVARIA CRUISER 41 BLUE EDITION

<b>Jib</b>	Elvstrøm Sails - ca. 34m² - 106%
<b>Genoa furler</b>	Furlex 304S
<b>Reefing System</b>	main in-mast furling
<b>Backstay adjuster</b>	mechanical
<b>Boomvang</b>	tackle
<b>Genoa sheetwinches</b>	2x Lewmar 50
<b>Halyard winches</b>	2x Lewmar 40





# BAVARIA CRUISER 41 BLUE EDITION

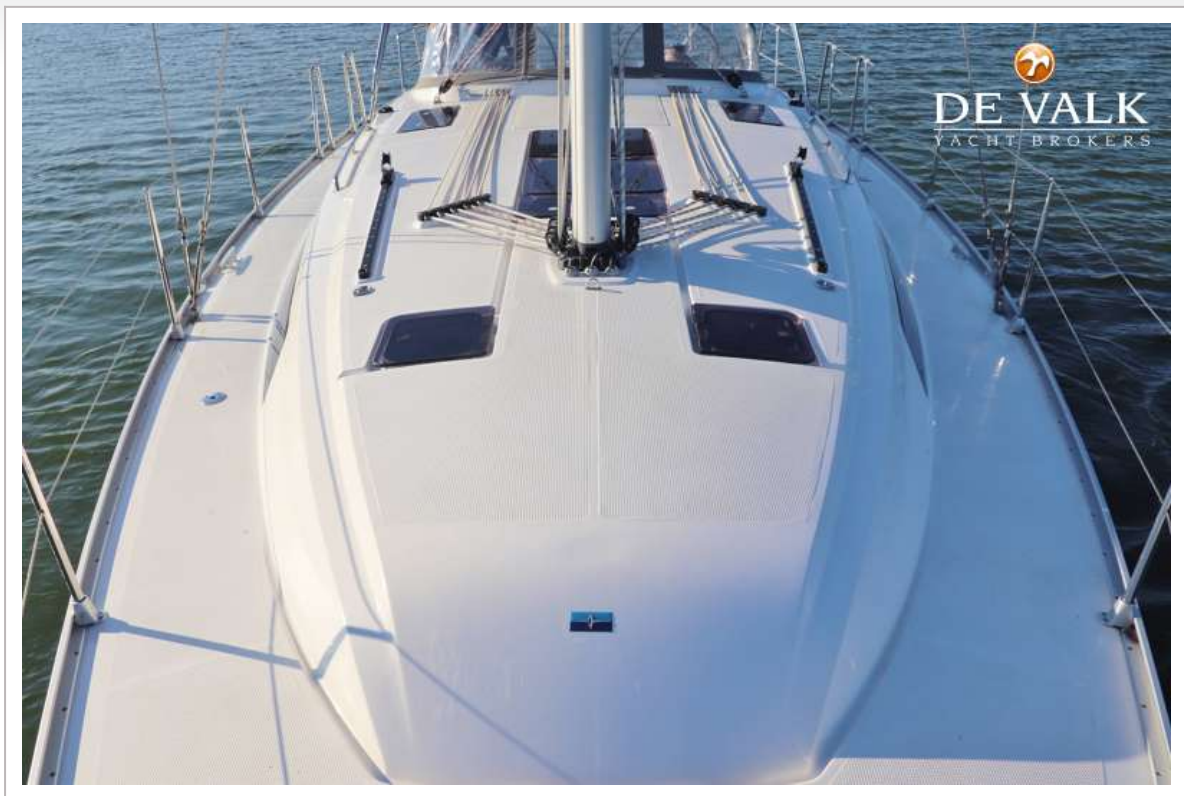


# BAVARIA CRUISER 41 BLUE EDITION





# BAVARIA CRUISER 41 BLUE EDITION

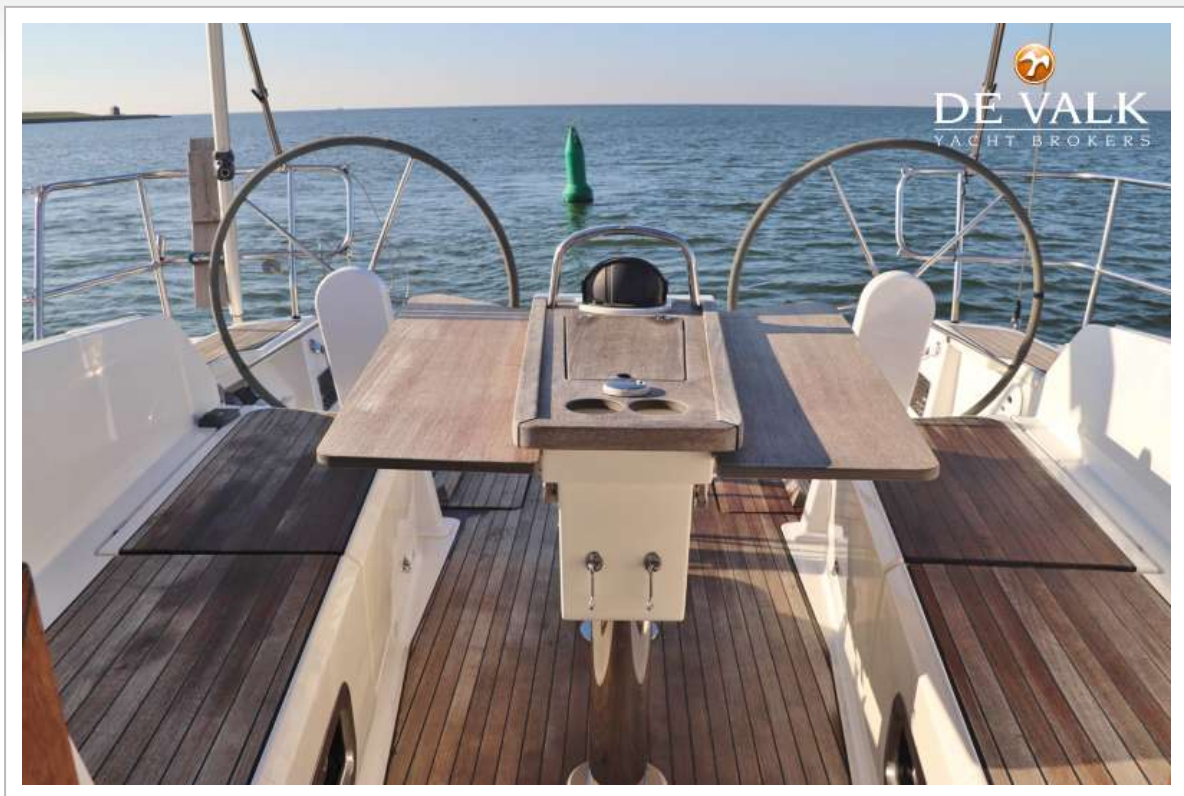


# BAVARIA CRUISER 41 BLUE EDITION

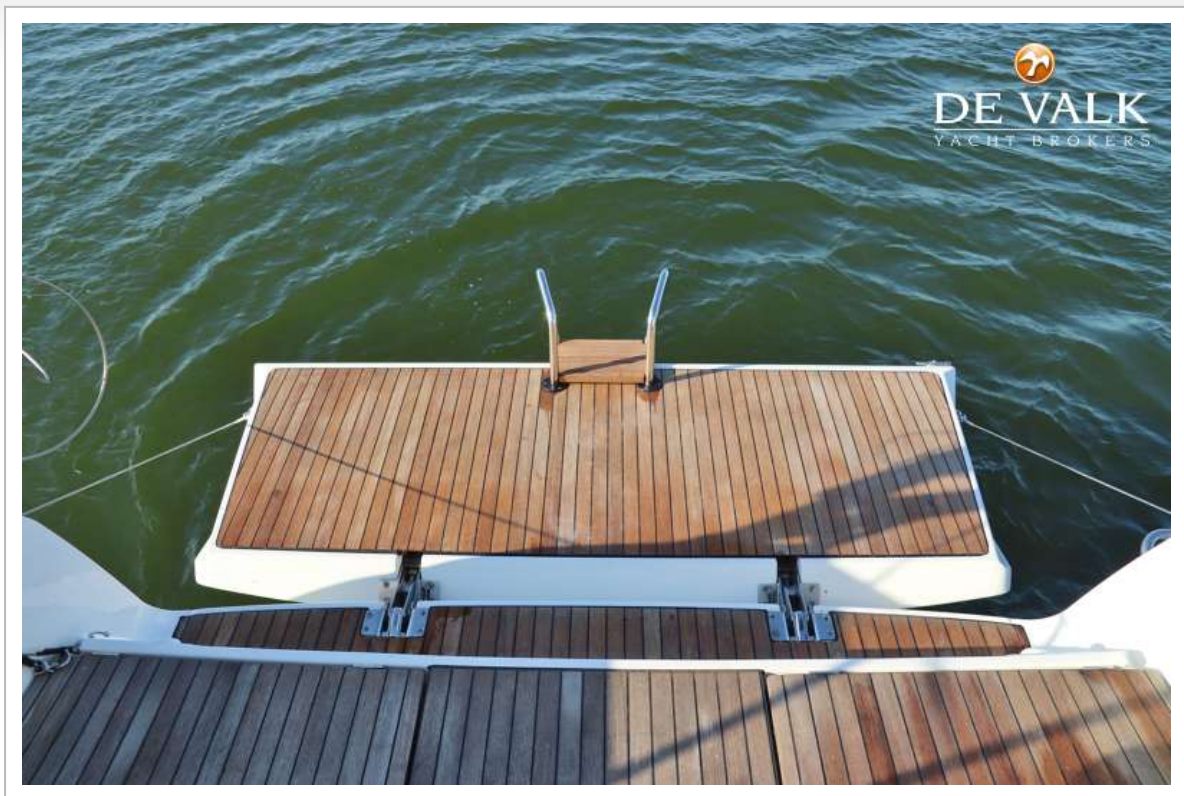




# BAVARIA CRUISER 41 BLUE EDITION



# BAVARIA CRUISER 41 BLUE EDITION





# BAVARIA CRUISER 41 BLUE EDITION

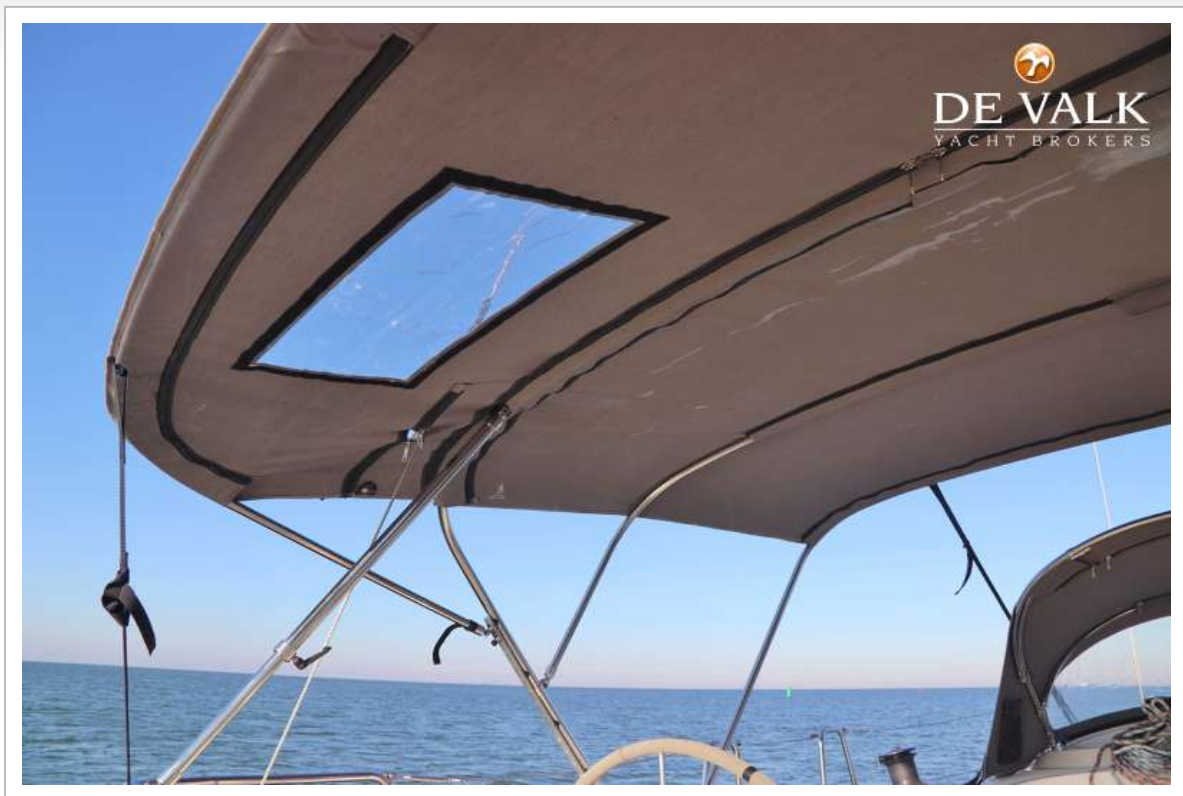


# BAVARIA CRUISER 41 BLUE EDITION





# BAVARIA CRUISER 41 BLUE EDITION



# BAVARIA CRUISER 41 BLUE EDITION

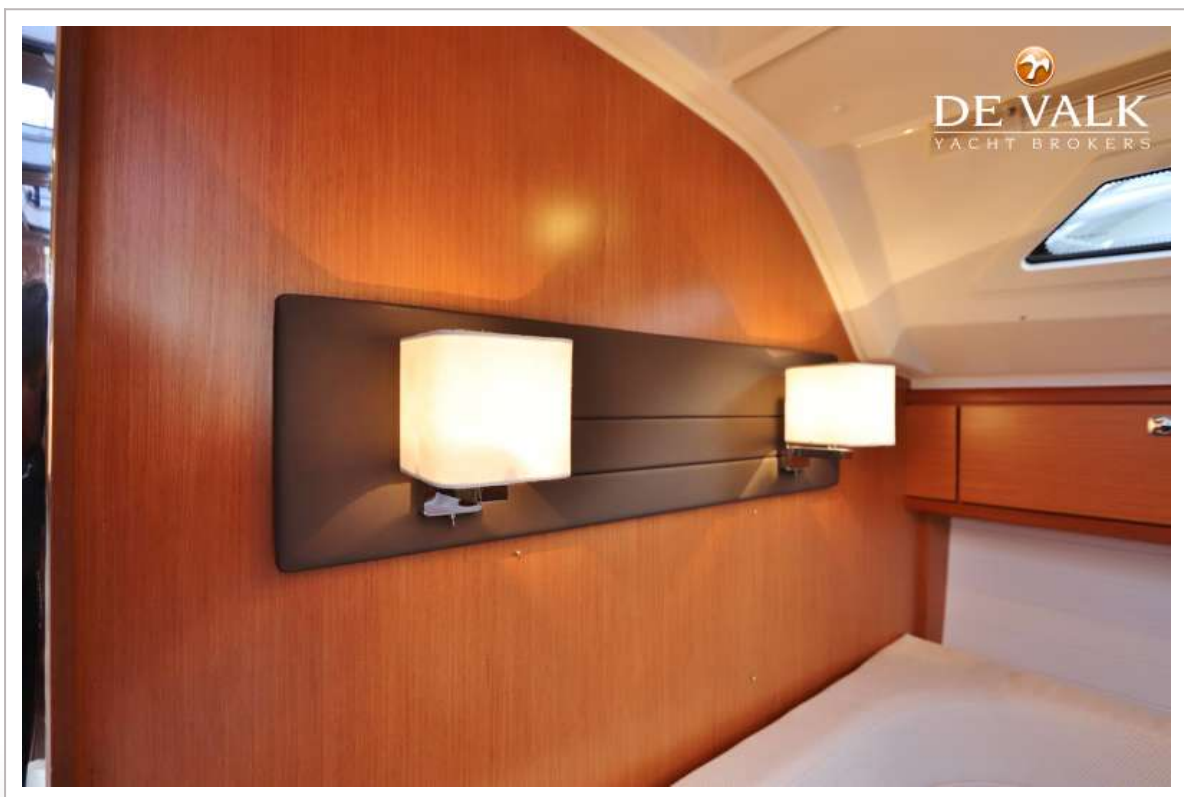




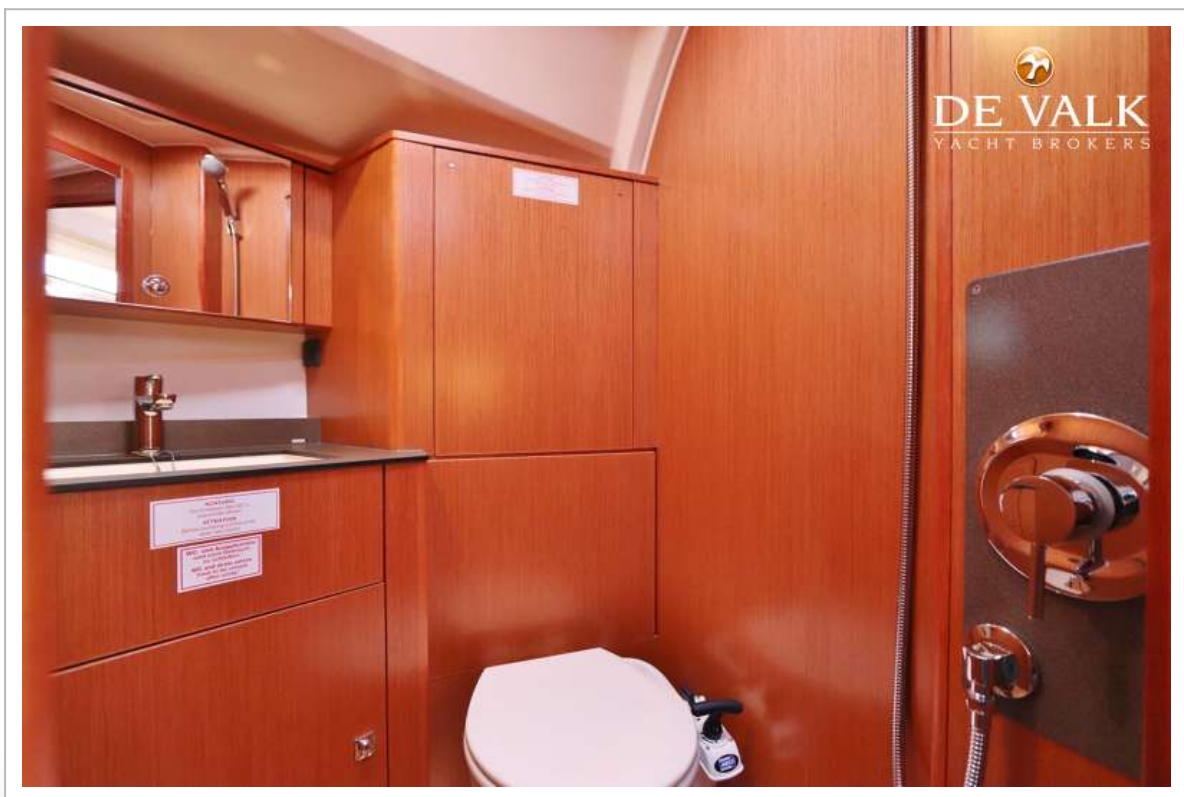
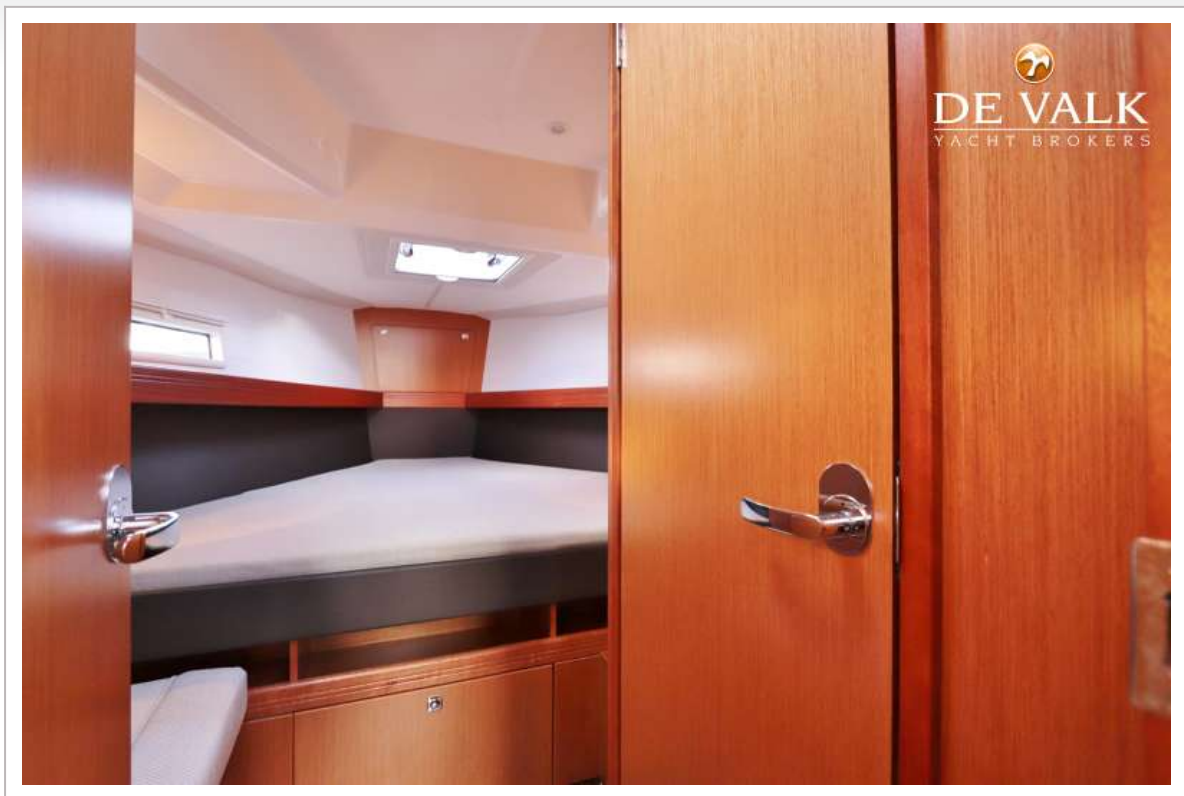
# BAVARIA CRUISER 41 BLUE EDITION



# BAVARIA CRUISER 41 BLUE EDITION



# BAVARIA CRUISER 41 BLUE EDITION

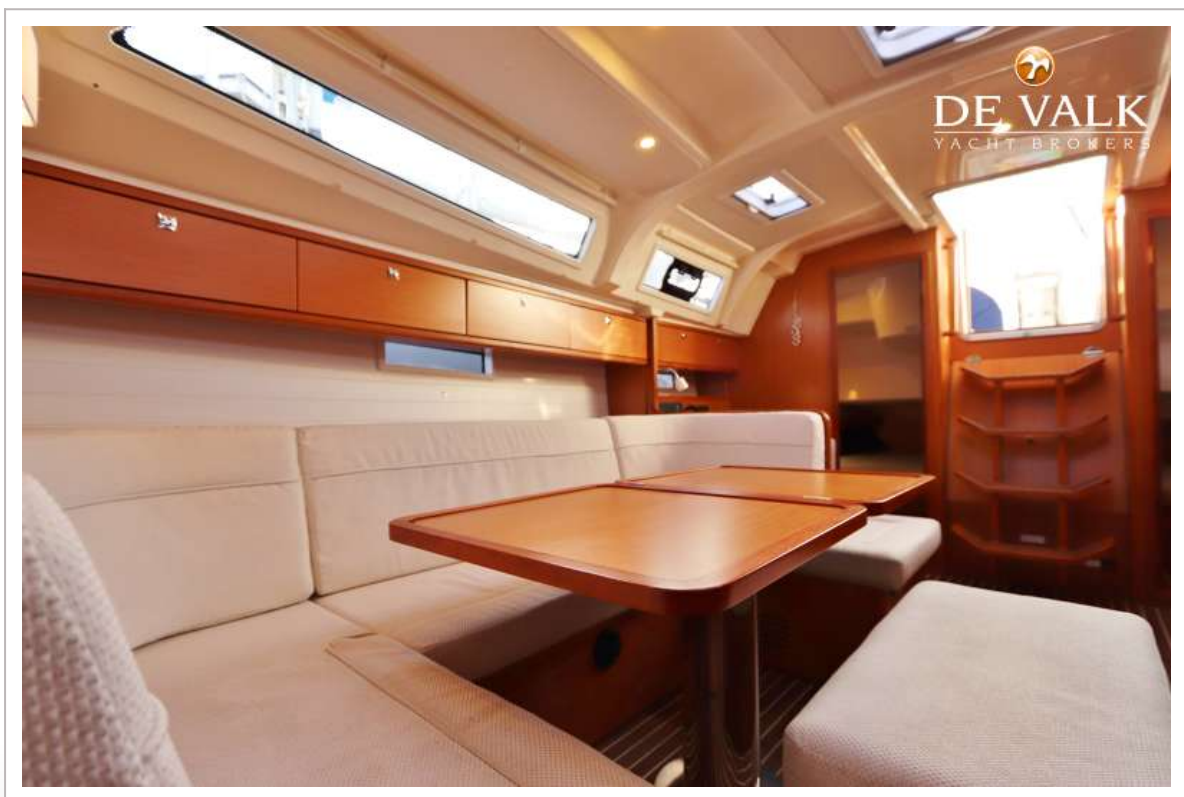
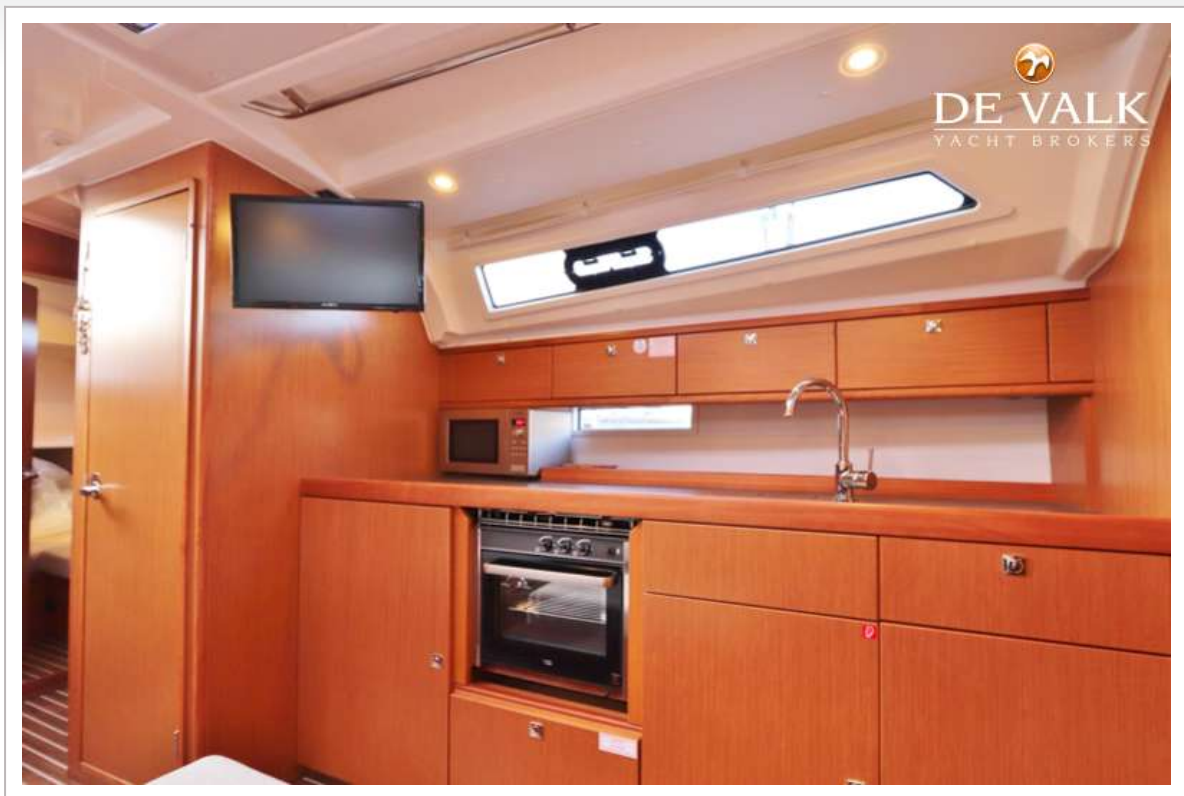




# BAVARIA CRUISER 41 BLUE EDITION



# BAVARIA CRUISER 41 BLUE EDITION



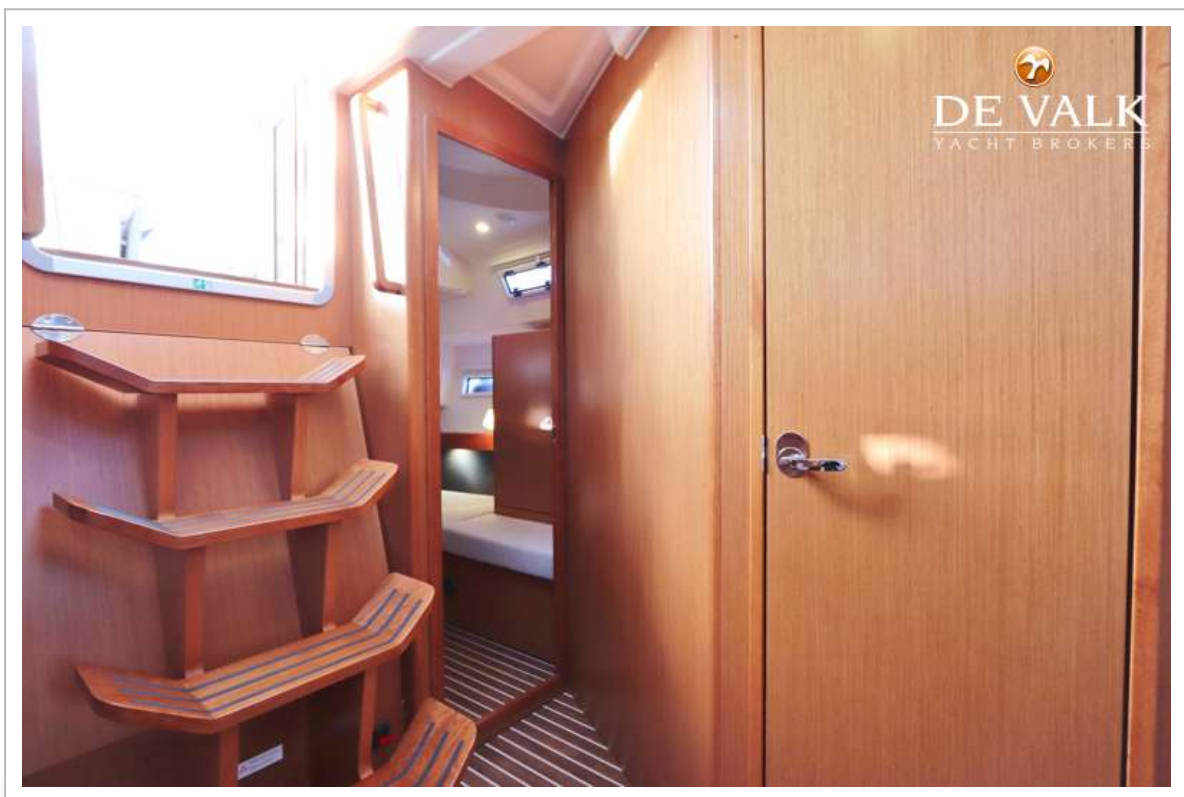


# BAVARIA CRUISER 41 BLUE EDITION





# BAVARIA CRUISER 41 BLUE EDITION



# BAVARIA CRUISER 41 BLUE EDITION



# BAVARIA CRUISER 41 BLUE EDITION

