



BAVARIA 37 CRUISER



BAVARIA 37 CRUISER

BROKER'S COMMENTS

Well maintained and equipped Bavaria 37 Cruiser from a meticulous first and only owner. Good handling and sail performance thanks to the easy to handle stoway Elvström sails. Safe due to handling the rig from the cockpit, so ideal for short-handed sailing. The Bavaria 37 Cruiser offers good stowage space below and on deck. The 3 cabin layout makes here extremely spacious and lots of storage room.

Johan Nooitgedagt

SPECIFICATIONS

Dimensions	11.55 x 3.68 x 1.85 (m)	Builder	Bavaria Giebelstadt
Built	2002	Cabins	3
Material	GRP	Berths	7
Engine(s)	1 x Volvo Penta MD2030 diesel	Hp/Kw	29.00 (hp), 21.32 (kw)
Asking price	sold (VAT)	Lying	contact Hindeloopen

CONTACT

Sales office	De Valk Hindeloopen B.V.	Telephone	+31 514 52 40 00
Address	Oosterstrand 1 8713 JS Hindeloopen NL	E-mail	hindeloopen@devalk.nl

DISCLAIMER

These particulars are given in good faith as supplied but cannot be guaranteed.



BAVARIA 37 CRUISER

GENERAL

Model	BAVARIA 37 CRUISER
Type	sailing yacht
LOA (m)	11,55
LWL (m)	8,95
Beam (m)	3,68
Draft (m)	1,85
Air draft (m)	16,20
Headroom (m)	1,90
Year built	2002
Builder	Bavaria Giebelstadt
Country	Germany
Displacement (t)	5,5
Ballast (tonnes)	cast iron 1,78
Gross tonnage	6.850
CE norm	A
Hull material	GRP
Hull colour	white
Hull shape	round-bilged
Keel type	fin keel
Rubbing strake	aluminum
Deck finish	teak
Cockpit deck finish	teak
Antifouling (year)	2020
Window frame	stainless steel
Window material	polycarbonate
Fuel tank (litre)	polyethylene
Level indicator (fuel tank)	yes
Freshwater tank (litre)	polyethylene
Wheel steering	cable steering
Emergency tiller	yes



BAVARIA 37 CRUISER

ACCOMMODATION

Cabins	3
Berths	7
Interior	mahogany
Layout	yes
Floor	teak and holly
Open cockpit	yes
Chart table	yes
Aft Cabin	yes
Galley	yes
Countertop	corian
Sink	stainless steel
Cooker	calor gas
Oven	yes
Fridge	yes
Water pressure system	electrical
Owners cabin	v-bed
Bed length (m)	2.0
Wardrobe	drawers and shelves
Bathroom	separate
Toilet	separate
Toilet system	manual
Wash basin	at the toilet
Guest cabin 1	double bed
Bed length (m)	2.0 rear
Wardrobe	hanging and shelves
Guest cabin 2	double bed
Bed length (m)	2.0 rear
Wardrobe	hanging and shelves

MACHINERY



BAVARIA 37 CRUISER

No of engines	1
Make	Volvo Penta
Type	MD2030
HP	29
kW	21,32
Fuel	diesel
Maximum speed (kn)	7,5
Cruising speed (kn)	6.5
Engine cooling system	freshwater heat exchanger
Drive	sail-drive
Saildrive seal	Feb-2016
Engine controls	bowden cable
Gearbox	mechanical
Bowthruster	electric 2015
Exhaust	watercooled
Propeller type	folding
Propeller blades	2
Manual bilge pump	yes
Electric bilge pump	yes
Start battery	2016 1 x 62Ah
Service battery	2016 2 x 140Ah
Bowthruster battery	2x 2015
Battery charger	yes
Shorepower	with cable

NAVIGATION

Compass	Plastimo 135
Depth sounder	Raytheon ST60 Tri data
Depth sounder/log	Raytheon ST60 Tri data
Log	Raytheon ST60 Tri data
Windset	Raytheon ST 60 Wind



BAVARIA 37 CRUISER

VHF	yes
Autopilot	Raymarine ST 6002
Rudder angle indicator	Raymarine ST 6002
Radar	Raymarine
Radar/GPS/plotter	Raymarine C80
Navtex	Clipper Navtex
Electronic chart(s)	yes
AIS receiver	yes
Navigation lights	yes
Extra info	Autopilot with remote

EQUIPMENT

Sprayhood	yes
Sprayhood with grab rail	yes
Cockpit cover	yes
Winter cover	For standing mast
Cockpit table	yes
Boarding ladder	stainless steel
Deck shower	yes
Anchor	CQR Plough
Grab rail (superstructure)	stainless steel
Pushpit	yes
Pulpit	yes
Lifejackets	yes
Rope cutter	yes
Radar reflector	yes
Fenders	yes
Mooring lines	yes
Spare parts	yes
Tools	yes
TV	Finlux



BAVARIA 37 CRUISER

Radio-cd player	Pioneer
DVD player	yes
iPod connection	yes
Cockpit speakers	yes
Speakers in salon	yes
Clock - barometer	yes
Fire extinguisher	yes

RIGGING

Rigging	sloop
Standing rigging	wire
Brand mast	Seldén
Material mast	aluminium
Spreaders	yes
Mainsail	yes
Stoway mast	yes
Genoa	yes
Genoa furler	yes
Genoa cover	yes
Reefing System	main in-mast furling
Backstay adjuster	mechanical
Boomvang	gasspring
Genoa sheetwinches	2x Harken ST40 2sp
Multifunctional winches	halyard/sheet winches 2x Harken ST32 2sp
Spi-pole	aluminium



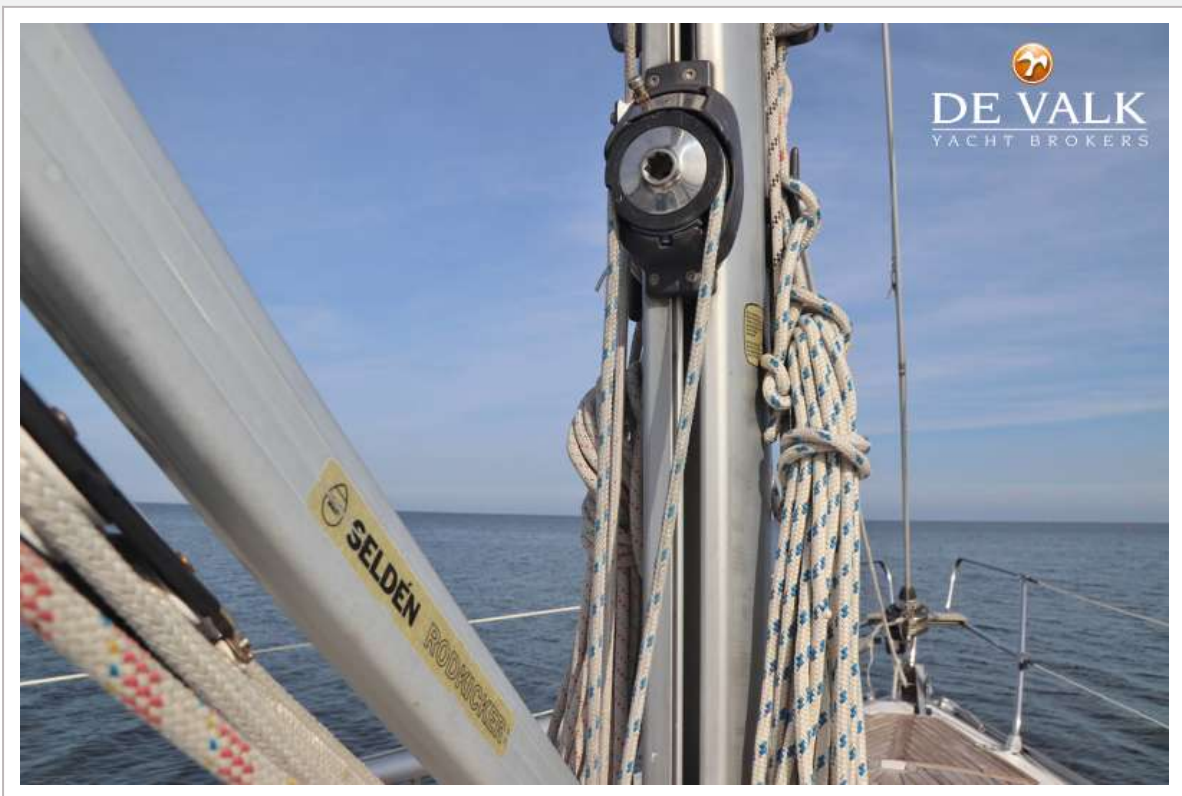
BAVARIA 37 CRUISER



BAVARIA 37 CRUISER



BAVARIA 37 CRUISER



BAVARIA 37 CRUISER



BAVARIA 37 CRUISER



BAVARIA 37 CRUISER



BAVARIA 37 CRUISER



BAVARIA 37 CRUISER



BAVARIA 37 CRUISER



BAVARIA 37 CRUISER



BAVARIA 37 CRUISER



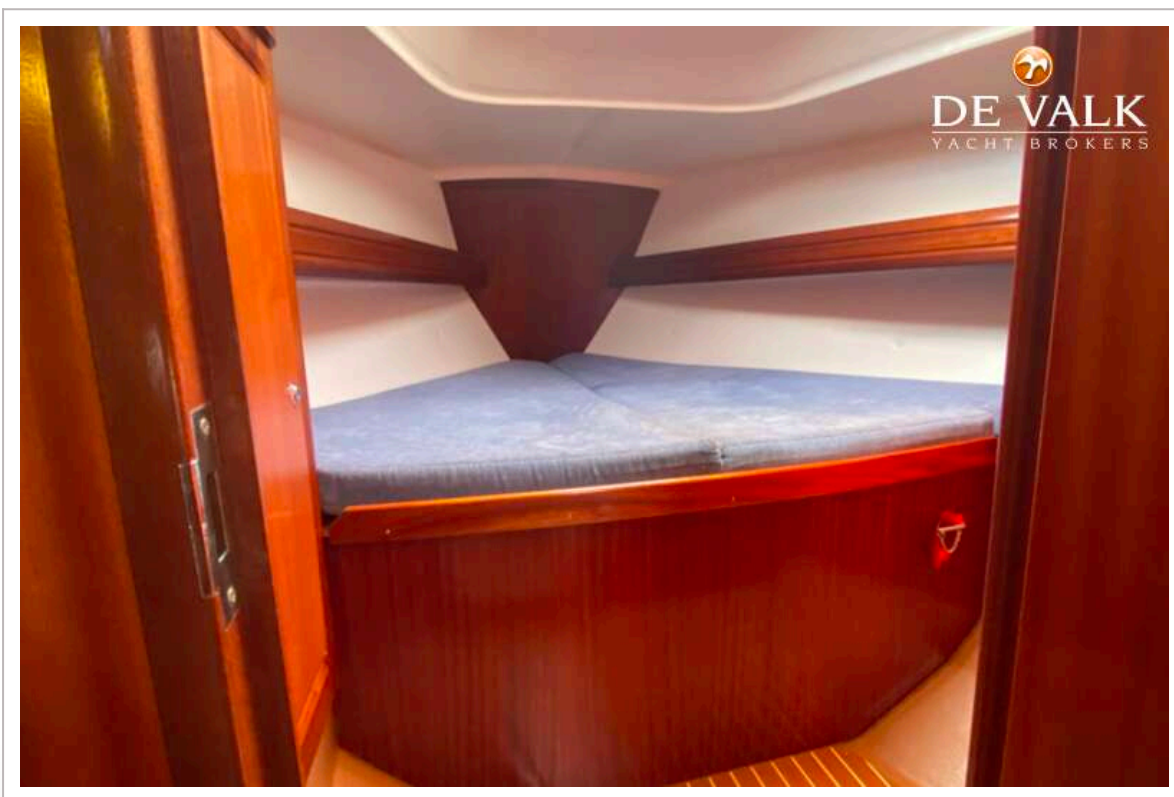
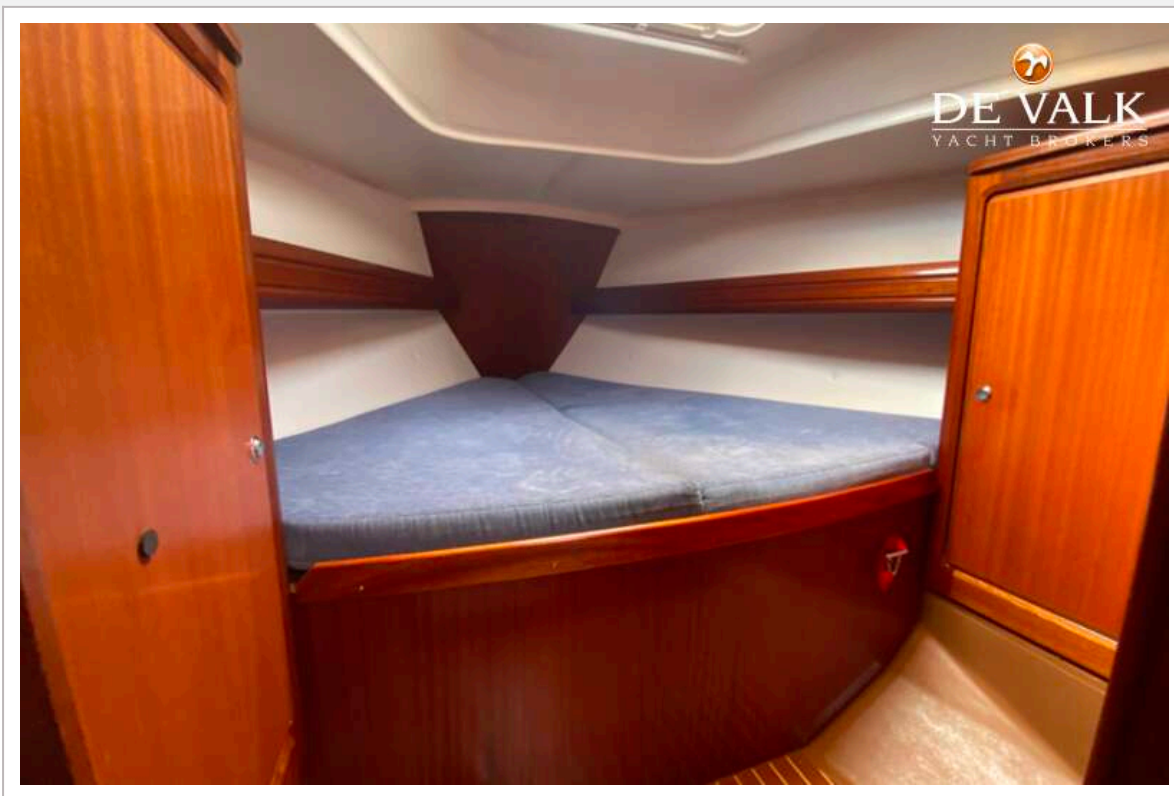
BAVARIA 37 CRUISER



BAVARIA 37 CRUISER



BAVARIA 37 CRUISER



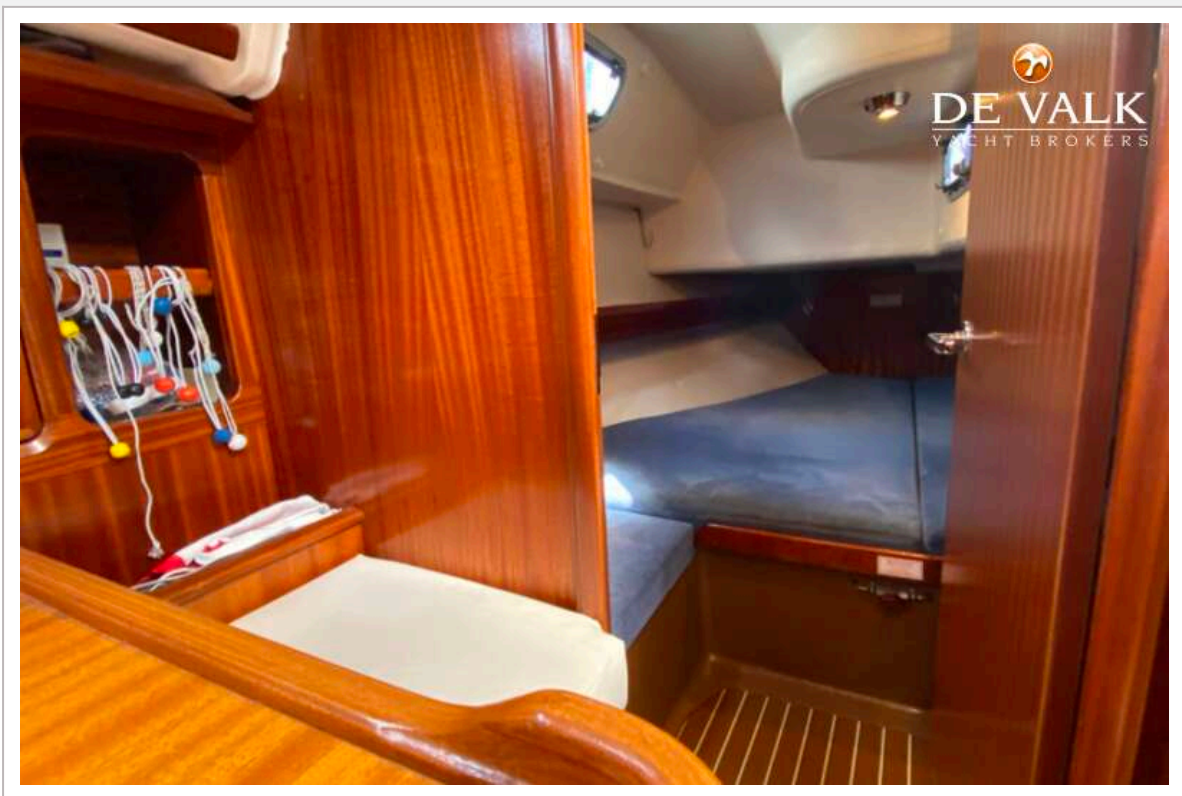
BAVARIA 37 CRUISER



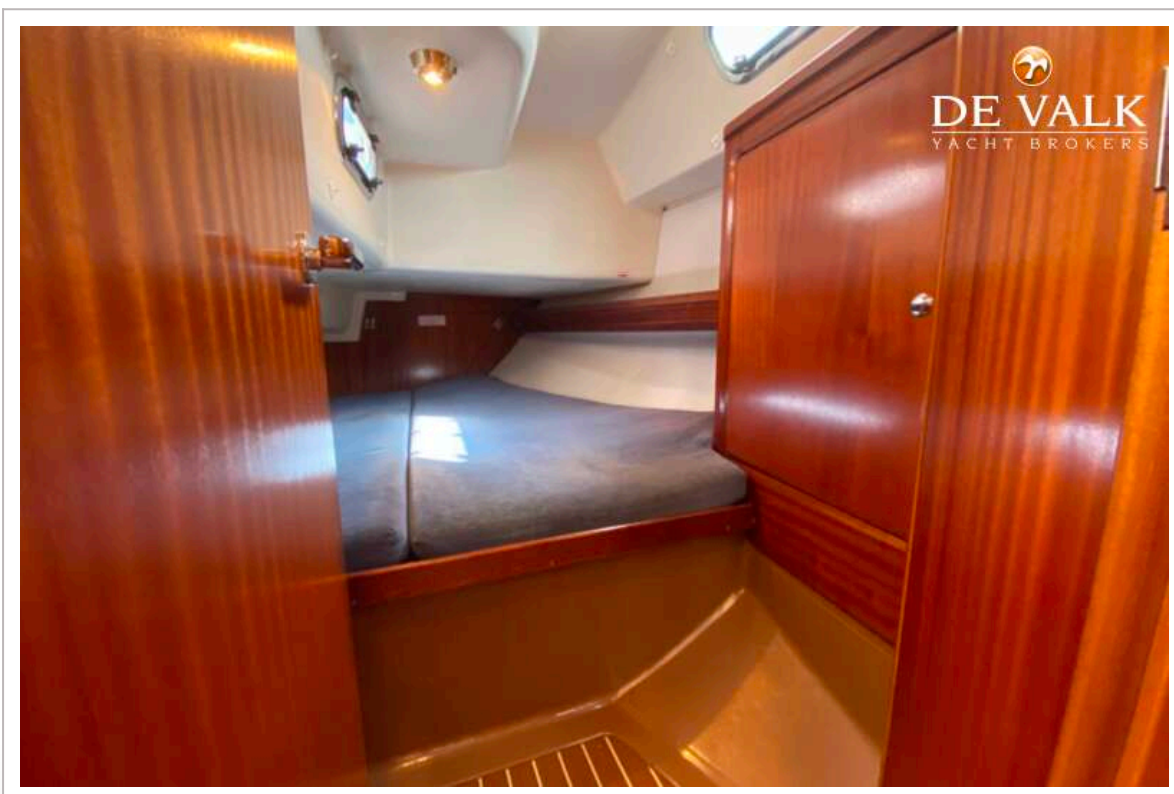
BAVARIA 37 CRUISER



BAVARIA 37 CRUISER



BAVARIA 37 CRUISER



BAVARIA 37 CRUISER

