



DE VALK
YACHT BROKERS



Photo: Peter Seyfferth / TheYachtPhoto.com

CLASSIC MOTOR YACHT



DE VALK
YACHT BROKERS

CLASSIC MOTOR YACHT

BROKER'S COMMENTS

The classic Motoryacht Philmarbe, Asking Price EUR. 450.000,- is a beautiful example of traditional craftsmanship and style. Although many upgrades have taken place, these were done in style using only the best. The classic motoryacht Philmarbe has been under one owner for over 30 years and has always been maintained by professionals. She will be auctioned online on June 16th, 2021 in cooperation with yachtbid & BVA Auctions. The starting bid is EUR. 50.000,- For more info go to the auction site:

<https://www.bva-auctions.com/en/auction/lot/56188/16957554?pid=0>

Hans Visser

SPECIFICATIONS

Dimensions	25.84 x 6.08 x 2.00 (m)	Builder	Ortigoza Cofadic
Built	1959	Cabins	4
Material	Wood	Berths	7
Engine(s)	2 x Volvo Penta MD120AK diesel	Hp/Kw	2 x 223.00 (hp), 163.90 (kw)
Asking price	sold (VAT)	Lying	contact Amsterdam

CONTACT

Sales office	De Valk Amsterdam B.V.	Telephone	+31 (0)35 5829014
Address	Peperstraat 7 1411 PX Naarden NL	E-mail	amsterdam@devalk.nl

DISCLAIMER

These particulars are given in good faith as supplied but cannot be guaranteed.



CLASSIC MOTOR YACHT

GENERAL

Model	CLASSIC MOTOR YACHT
Type	motor yacht
LOA (m)	25,84
LWL (m)	23,70
Beam (m)	6,08
Draft (m)	2,00
Headroom (m)	2,00
Year built	1959
Builder	Ortigoza Cofadic
Country	Spain
Designer	Eugene Cornu
Displacement (t)	95
Gross tonnage	72,63
Hull material	wood
Hull colour	white
Hull shape	round-bilged
Superstructure material	wood
Rubbing strake	wood
Deck material	wood
Deck finish	teak
Superstructure deck finish	teak
Cockpit deck finish	teak
Antifouling (year)	2019
Dorades	9 x stainless
Window frame	stainless steel
Window material	glass
Deckhatch	yes
Portholes	stainless steel 12
Radar arch	non collapsible
Fuel tank (litre)	steel 7500 L. in 4 tanks



CLASSIC MOTOR YACHT

Level indicator (fuel tank)	yes
Freshwater tank (litre)	2200 L. in 2 tanks
Level indicator (freshwater)	yes
Blackwater tank (litre)	polyethylene 2 x 100
Level indicator (blackwater)	yes
Blackwater tank extraction	deck extraction + pump
Wheel steering	cable steering
Inside helm position	yes

ACCOMMODATION

Cabins	4
Berths	7
Crew cabin	3
Crew berths	4
Interior	mahogany
Layout	Owner with crew
Floor	carpet
Aft deck	yes
Pilot house	yes
Deck saloon	yes
Saloon	yes
Headroom saloon (m)	2
Heating	electric 220V
Navigation center	yes
Aft Cabin	yes
Dining room	yes
Sliding door to cockpit	2 side doors in pilothouse to side decks
Opening door to cockpit	Aft to aft deck
Galley	U shaped
Countertop	stainless steel
Sink	Double



CLASSIC MOTOR YACHT

Cooker	electric Faure CVC 6995 4 burner
Oven	Integrated in Coocker
Microwave	LG
Fridge	Stainless steel
Freezer	Stainless steel 2 x
Hot water system	220V + engine
Water pressure system	electrical
Kettle	yes
Coffee maker	yes
Crockery	yes
Owners cabin	double bed + single bed
Bed length (m)	2
Wardrobe	hanging/drawers/shelves
Bathroom	shared
Toilet	separate
Toilet system	electric
Wash basin	in the cabin
Shower	shared
Guest cabin 1	twin single
Bed length (m)	2
Wardrobe	hanging and shelves
Bathroom	shared
Toilet	shared
Toilet system	electric
Wash basin	in the cabin
Shower	shared
Guest cabin 2	twin single
Bed length (m)	2
Wardrobe	hanging and shelves
Bathroom	shared
Toilet	shared
Toilet system	electric



CLASSIC MOTOR YACHT

Wash basin	in the cabin
Shower	shared
Guest cabin 3	single bed
Bed length (m)	2
Wardrobe	hanging and shelves
Bathroom	shared
Toilet	shared
Toilet system	electric
Wash basin	in the cabin
Shower	shared
Crew cabin(s)	3
Bathroom (crew)	yes
Toilet (crew)	yes
Toilet system	manual
Wash basin	in the bathroom
Shower (crew)	yes
Extra info	Crew mess with seperate enyrance
Washing machine	Candy Aqua 1042 D1 4 Kg.
Dryer	Electrolux EDC 1250 needs repair
Extra info	Lower salon and deck salon
Extra info	Large crew area with seperate crew deck entrance

MACHINERY

No of engines	2
Make	Volvo Penta
Type	MD120AK
HP	223
kW	163,90
Fuel	diesel
Year installed	1974
Maximum speed (kn)	12



CLASSIC MOTOR YACHT

Cruising speed (kn)	10
Engine hours	5885
Engine cooling system	freshwater heat exchanger
Drive	shaft
Shaft seal	yes
Engine controls	mechanical
Gearbox	hydraulic
Gearbox	
Exhaust	watercooled
Propeller type	fixed
Propeller blades	5
Shaft lubrication	grease
Manual bilge pump	yes
Electric bilge pump	yes
Electrical installation	12 & 24 V DC and 240 V 50 Hz AC
Generator	wet exhaust Cummins Onan
Generator 2	silent separator Cummins Onan
Batteries	yes
Start battery	yes
Service battery	yes
Generator battery	yes
Battery monitor	yes
Battery charger	yes
Inverter	yes
Shorepower	with cable
Watermaker	yes
Stabilizers	fin Naiad Dynamics

NAVIGATION

Compass	Sestrel
Electric compass	On autopilot



CLASSIC MOTOR YACHT

Depth sounder	VDO Logic
VHF	Sailor
Autopilot	Raymarine
Rudder angle indicator	VDO
Radar	Furuno closed scanner
GPS	Furuno
Plotter	Furuno
Radar/GPS/plotter	Furuno navnet
Electronic chart(s)	yes
Navigation lights	yes
Searchlight	2 x manual operated

EQUIPMENT

Bimini	yes
Sun awning	yes
Window cover	yes
Cockpit cushions	yes
Cockpit table	yes
Cockpit chairs	yes
Boarding ladder	yes
Gangway	yes
Anchor	Brittany
Anchor chain	yes
Anchor 2	Brittany
Windlass	electrical With manual backup
Windlass aft	electrical 1 x
Dinghy	rigid inflatable
Outboard	yes
Deck crane	electric
Sea railing	stainless steel
Grab rail (superstructure)	wood



CLASSIC MOTOR YACHT

Life raft	container 2 x
Life raft (pers)	2 x 6
Wiper	3 x
Horn	air pressure
Fenders	yes
Mooring lines	yes
Spare parts	yes
Tools	yes
TV	yes
TV receiver	DVB-t
Radio	Blaupunkt in wheelhouse
Clock - barometer	yes
Fire extinguisher	yes



CLASSIC MOTOR YACHT



BROKERAGE | CHARTER | BERTHS | FINANCE | INSURANCE | YACHT MANAGEMENT

DE VALK
YACHT BROKERS



**This yacht will be auctioned,
for further details please visit www.devalk.nl**

**Dit schip zal worden geveild,
voor meer informatie gaat u naar www.devalk.nl**

**Dieses Schiff wird versteigert,
für weitere informationen besuchen Sie www.devalk.nl**

WWW.DEVALK.NL



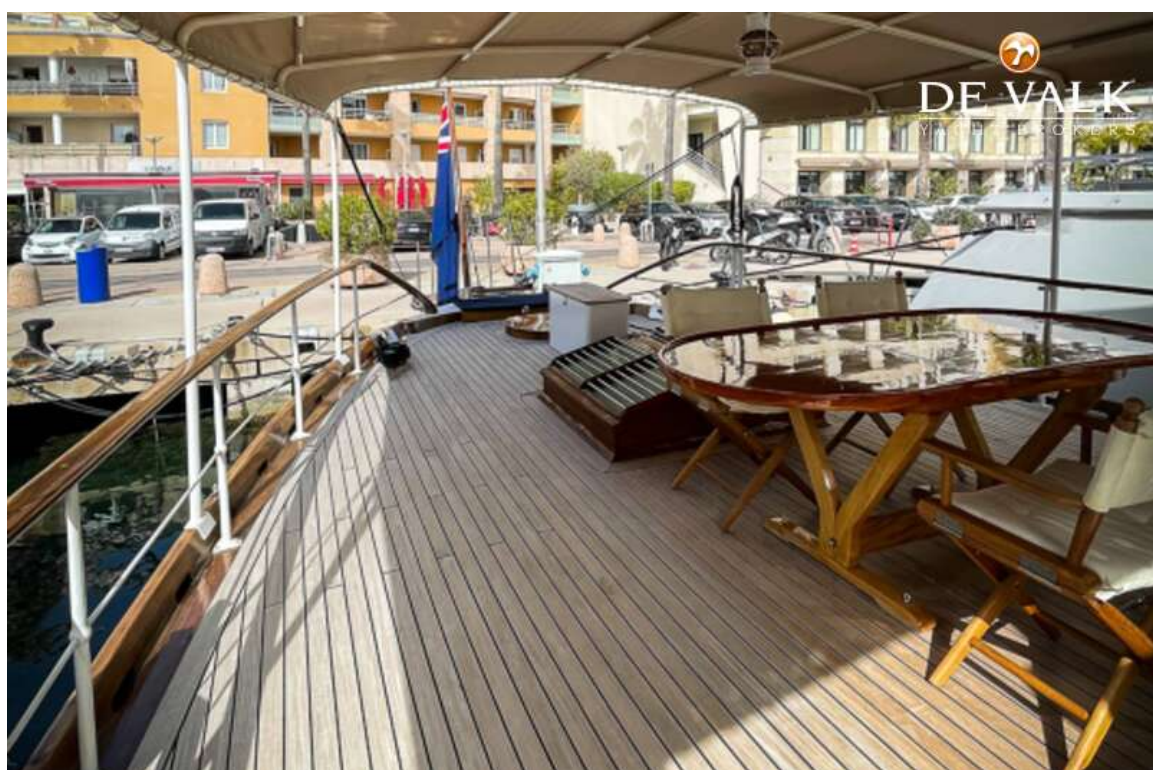
DE VALK
YACHT BROKERS



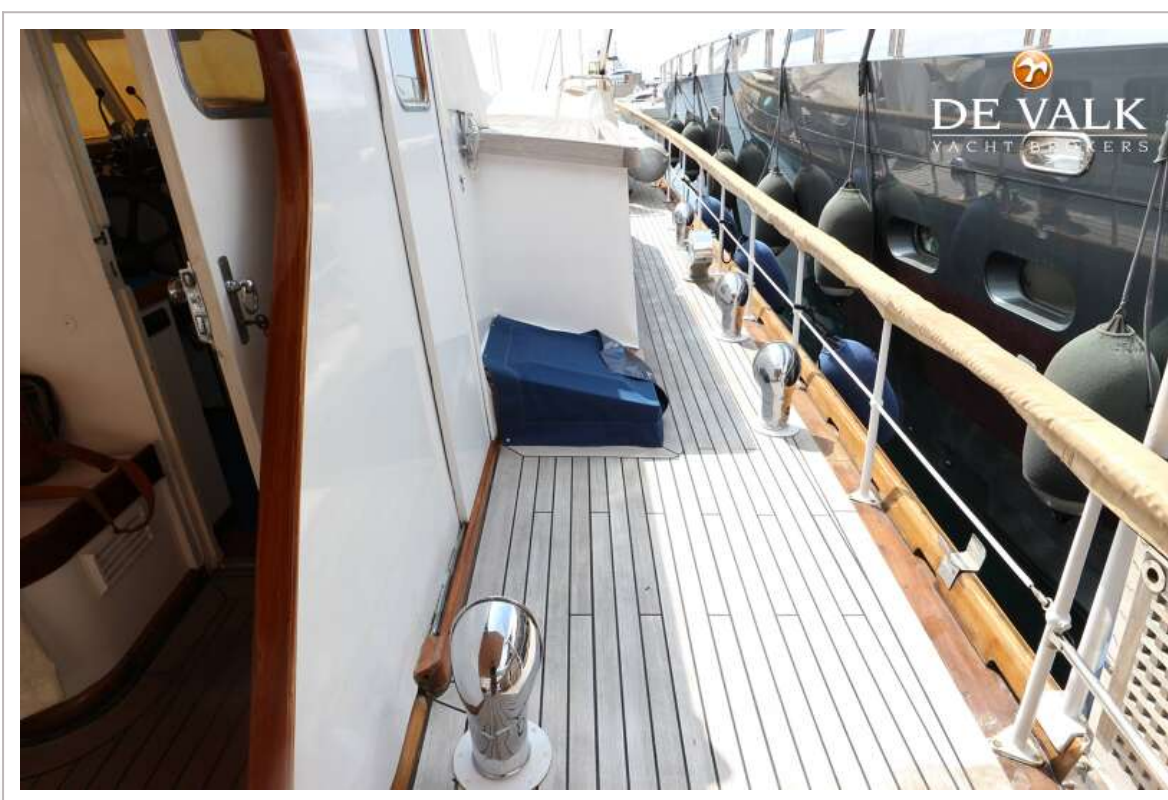
CLASSIC MOTOR YACHT



CLASSIC MOTOR YACHT



CLASSIC MOTOR YACHT



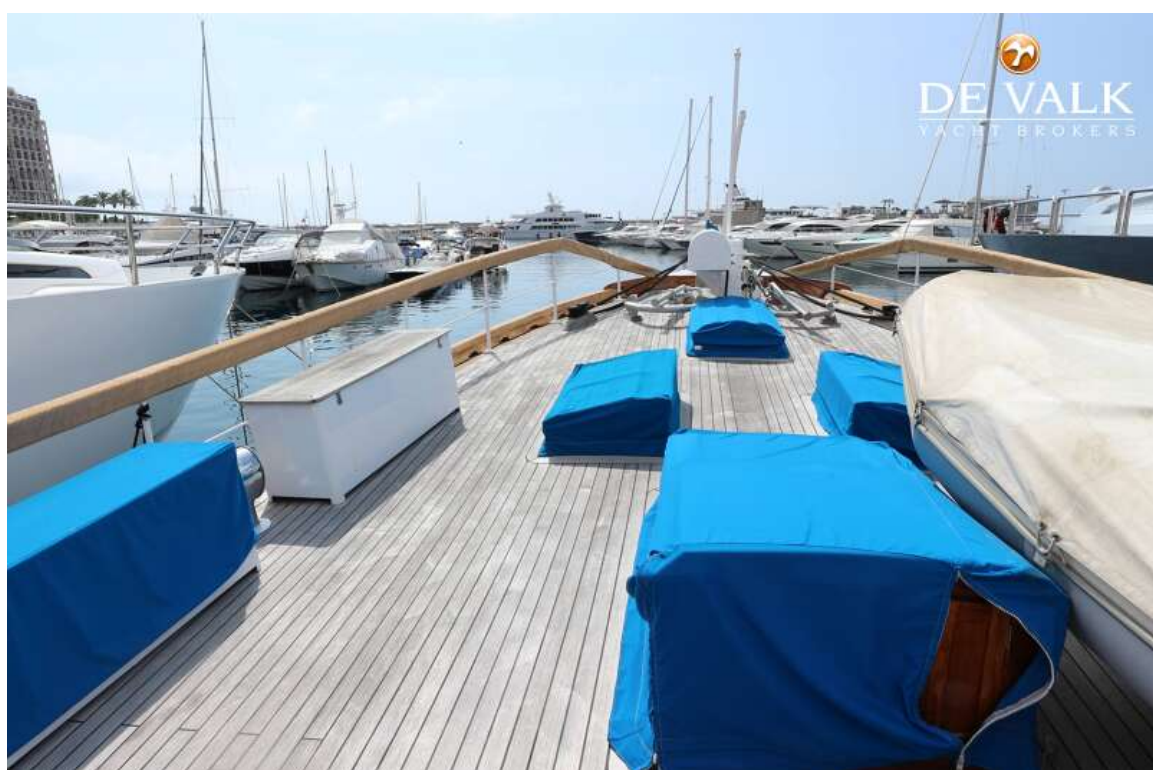
CLASSIC MOTOR YACHT



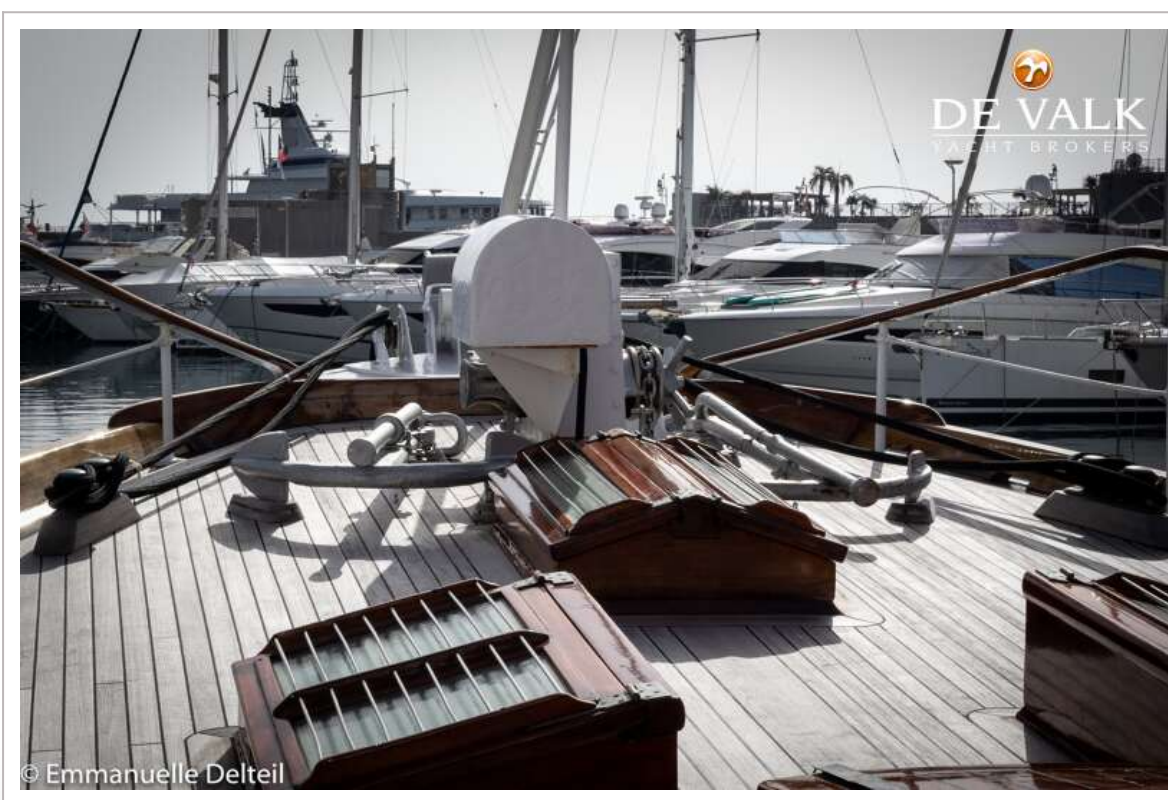
CLASSIC MOTOR YACHT



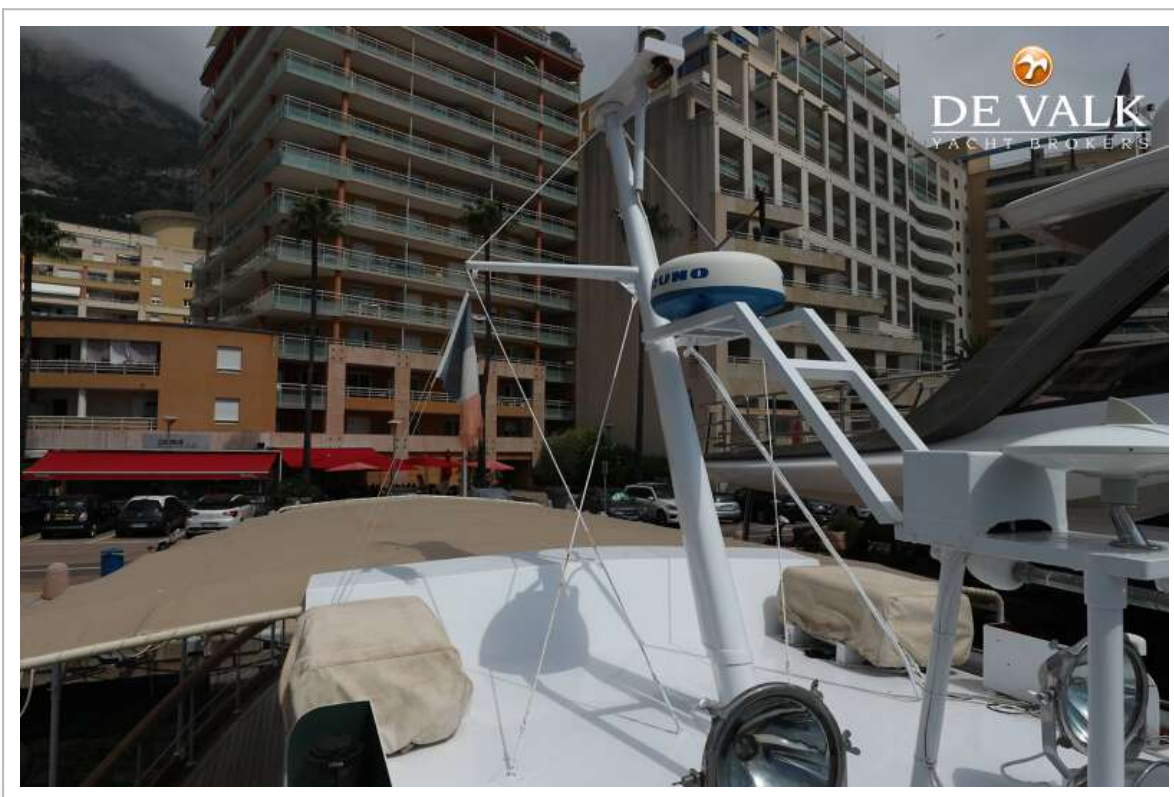
CLASSIC MOTOR YACHT



CLASSIC MOTOR YACHT



CLASSIC MOTOR YACHT



CLASSIC MOTOR YACHT





**This yacht will be auctioned,
for further details please visit www.devalk.nl**

**Dit schip zal worden geveild,
voor meer informatie gaat u naar www.devalk.nl**

**Dieses Schiff wird versteigert,
für weitere informationen besuchen Sie www.devalk.nl**

WWW.DEVALK.NL


DE VALK
YACHT BROKERS



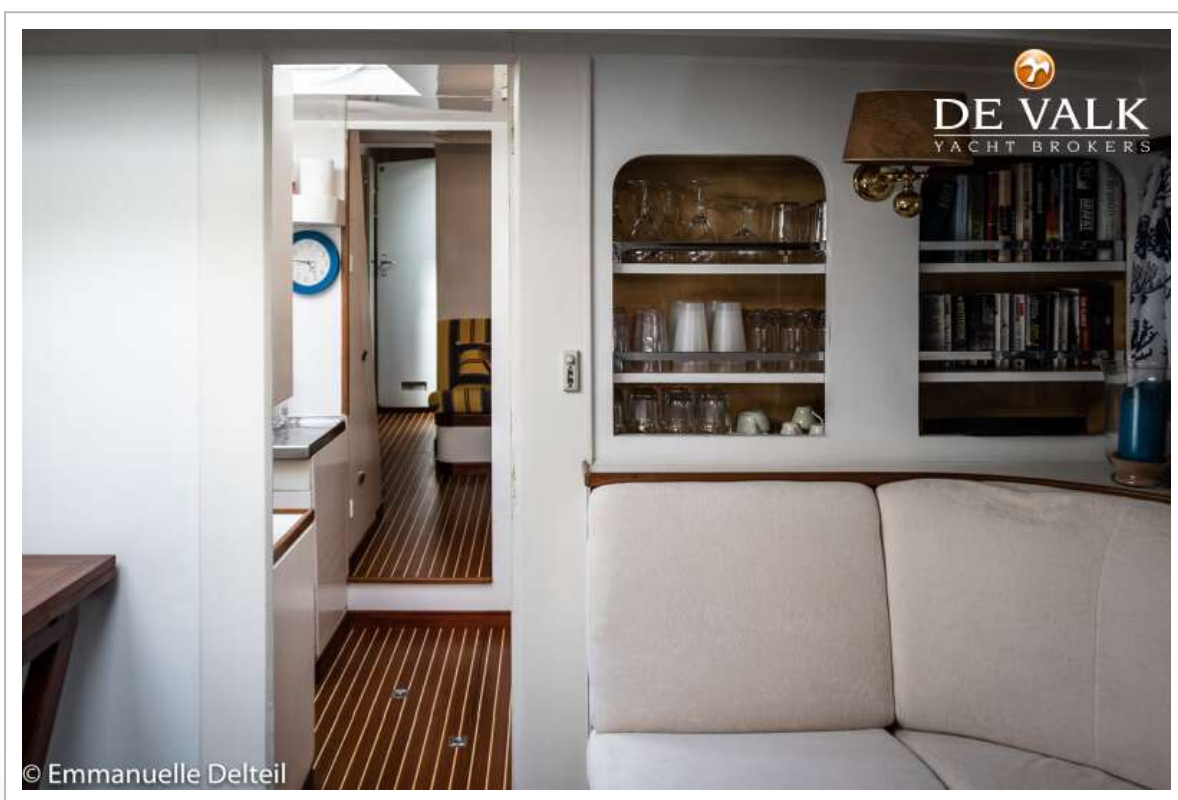
CLASSIC MOTOR YACHT



CLASSIC MOTOR YACHT



CLASSIC MOTOR YACHT



CLASSIC MOTOR YACHT



CLASSIC MOTOR YACHT



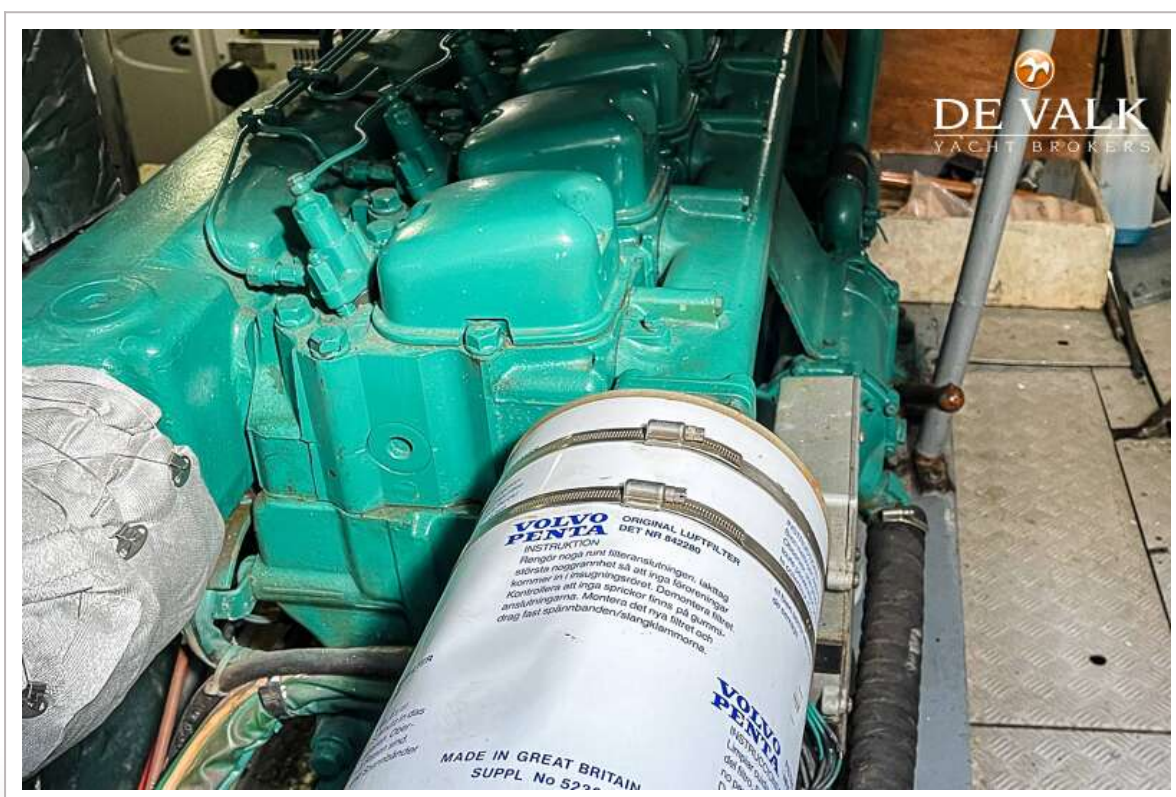
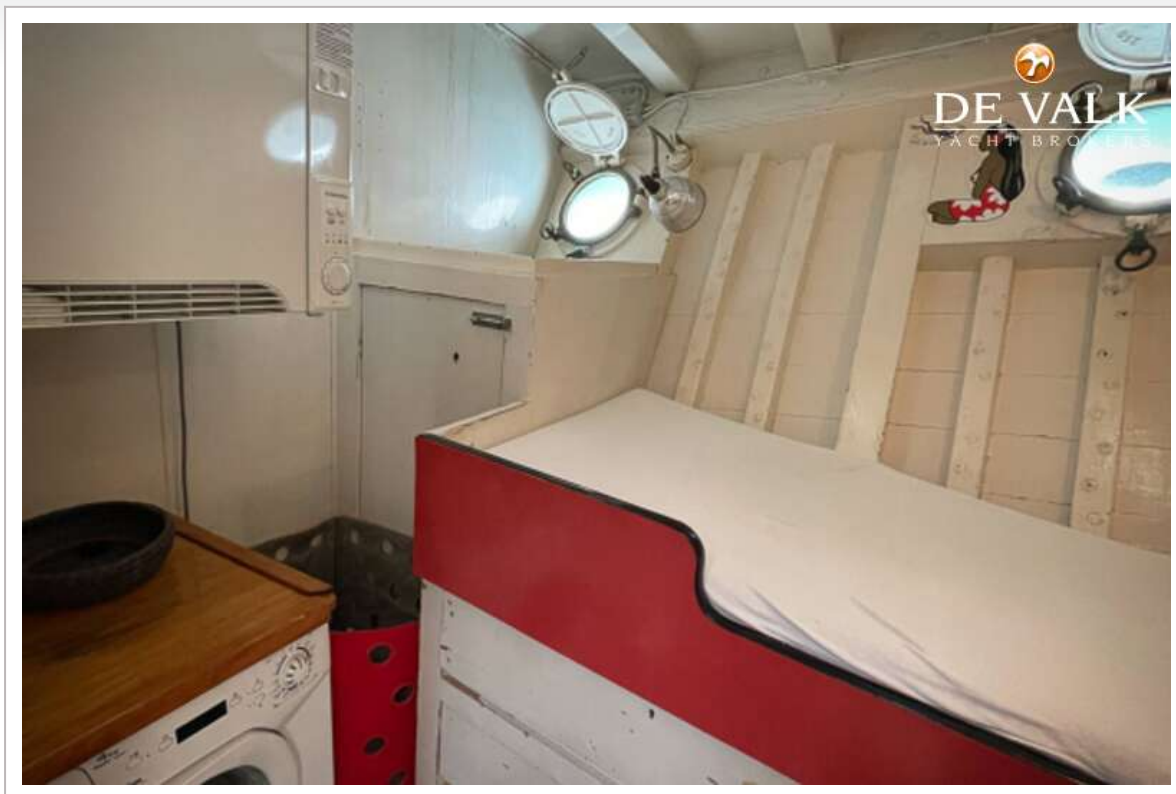
CLASSIC MOTOR YACHT



CLASSIC MOTOR YACHT



CLASSIC MOTOR YACHT





BROKERAGE | CHARTER | BERTHS | FINANCE | INSURANCE | YACHT MANAGEMENT
DE VALK
YACHT BROKERS



**This yacht will be auctioned,
for further details please visit www.devalk.nl**

**Dit schip zal worden geveild,
voor meer informatie gaat u naar www.devalk.nl**

**Dieses Schiff wird versteigert,
für weitere informationen besuchen Sie www.devalk.nl**

WWW.DEVALK.NL



DE VALK
YACHT BROKERS



CLASSIC MOTOR YACHT

